

# *Inspection Photos*

*API#081-06749*

*Operator: Grynberg*

*Insp#: 6924027723*

*Insp Date: 11/20/20*



**COLORADO**  
Oil & Gas Conservation  
Commission  
Department of Natural Resources



Photo#1:  
View Northwest over Location.



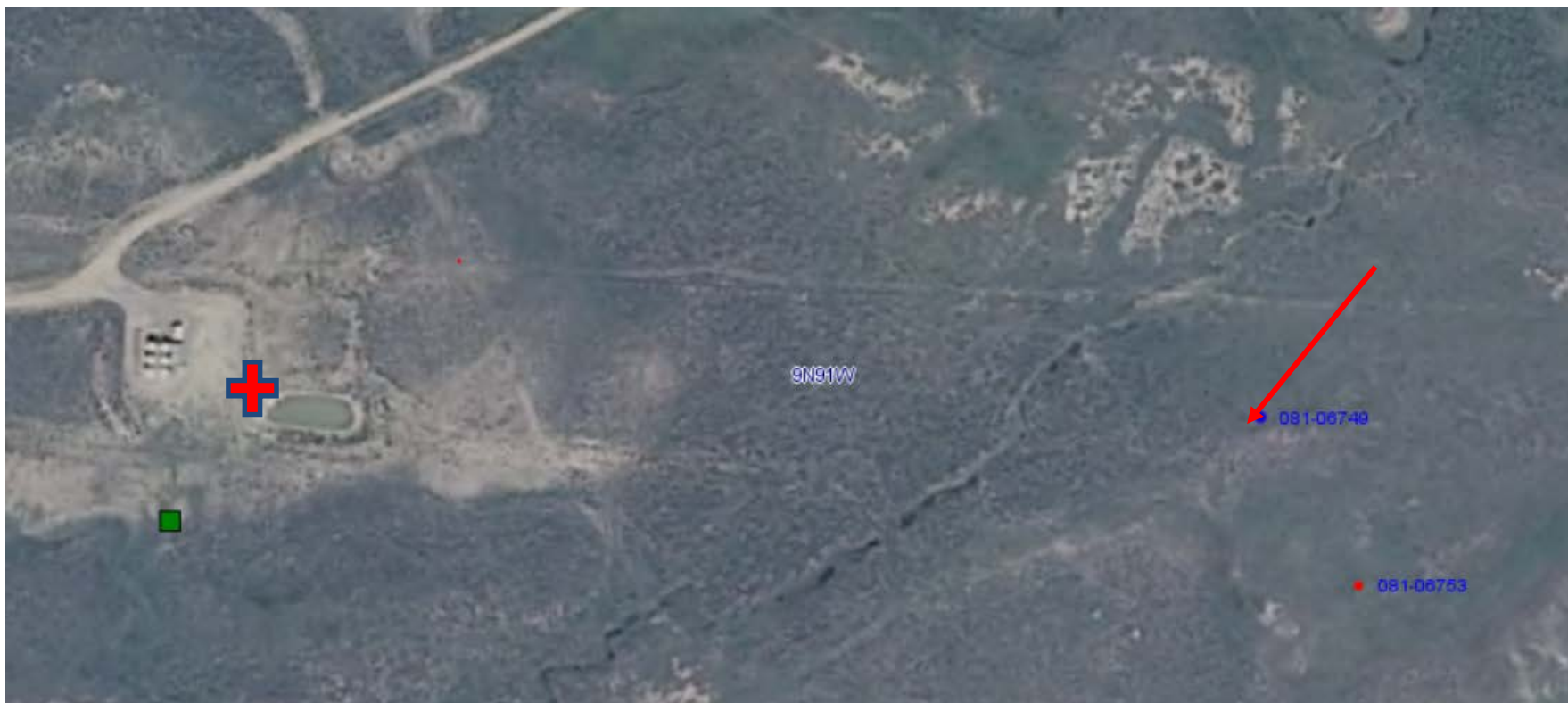
Photo#2:  
View Southeast over Location.

11/20/20



**COLORADO**  
Oil & Gas Conservation  
Commission  
Department of Natural Resources

Inspection Photos: Grynberg PA State API#081-06749



### Photo#3:

Red + approx. site of PA Marker. Red arrow indicates Well position on COGCC Maps. Green square is Pit position on COGCC maps.

11/20/20



**COLORADO**  
Oil & Gas Conservation  
Commission  
Department of Natural Resources

Inspection Photos: Grynberg PA State API#081-06749