

CONFLUENCE RESOURCES

Location:	COLORADO	Slot:	SLOT#14 Desha 4-13-3L (710°FSL & 450°FWL,SEC.33)
Field:	WELD COUNTY (NAD83, TRUE NORTH)	Well:	Desha 4-13-3L
Facility:	SEC.33-T01N-R65W	Wellbore:	Desha 4-13-3L PWB
Plot reference wellpath is Desha 4-13-3L PWP Rev-A.0		Grid System: NAD83 / Lambert Colorado SP, Northern Zone (501), US feet	
True vertical depths are referenced to Rig (20.5) (RT)		North Reference: True north	
Reference wellpath measured depths are referenced to Rig (20.5) (RT)		Scale: True distance	
Rig (20.5) (RT) to Mean Sea Level: 5098.5 feet		Coordinates are in feet referenced to Slot	
Mean Sea Level to Mud line (At Slot: SLOT#14 Desha 4-13-3L (710°FSL & 450°FWL,SEC.33)): 0 feet		Depths are in feet	
Offset wellpath MDs are referenced to each path's default MD datum		Created by: painsett on 2020-10-07, Database: WA_Deriver	

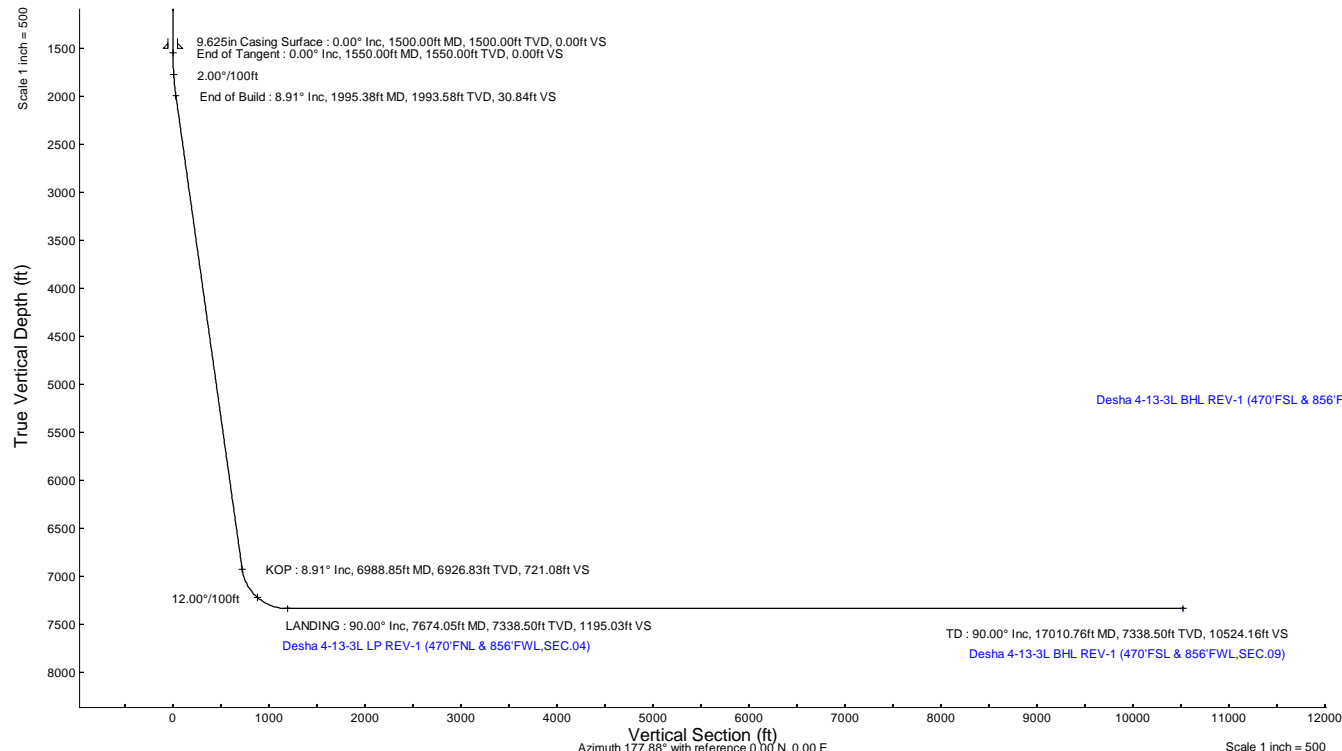
Location Information					
Facility Name		Grid East (US ft)	Grid North (US ft)	Latitude	Longitude
SEC.33-T01N-R65W		3230456.897	1245096.090	40°00'11.6640"N	104°40'38.4240"W
Slot		Local N (ft)	Local E (ft)	Grid East (US ft)	Grid North (US ft)
SLOT#14 Desha 4-13-3L (710°FSL & 450°FWL,SEC.33)		-273.21	151.28	3230610.703	1244824.300
Rig (20.5) (RT) to Mud line (At Slot: SLOT#14 Desha 4-13-3L (710°FSL & 450°FWL,SEC.33))				5098.5R	
Mean Sea Level to Mud line (At Slot: SLOT#14 Desha 4-13-3L (710°FSL & 450°FWL,SEC.33))				0R	
Rig (20.5) (RT) to Mean Sea Level				5098.5R	

Survey Program					
Start MD (ft)	End MD (ft)	Tool	Model	Log Name/Comment	Wellbore
20.50	1500.00	BH NavTrak (2019)	BH NavTrak (2019) (Axial)		Desha 4-13-3L PWB
1500.00	17053.87	BH AutoTrak Curve/Press (2019)	BH AutoTrak Curve/Press (2019) (Short spacing)		Desha 4-13-3L PWB

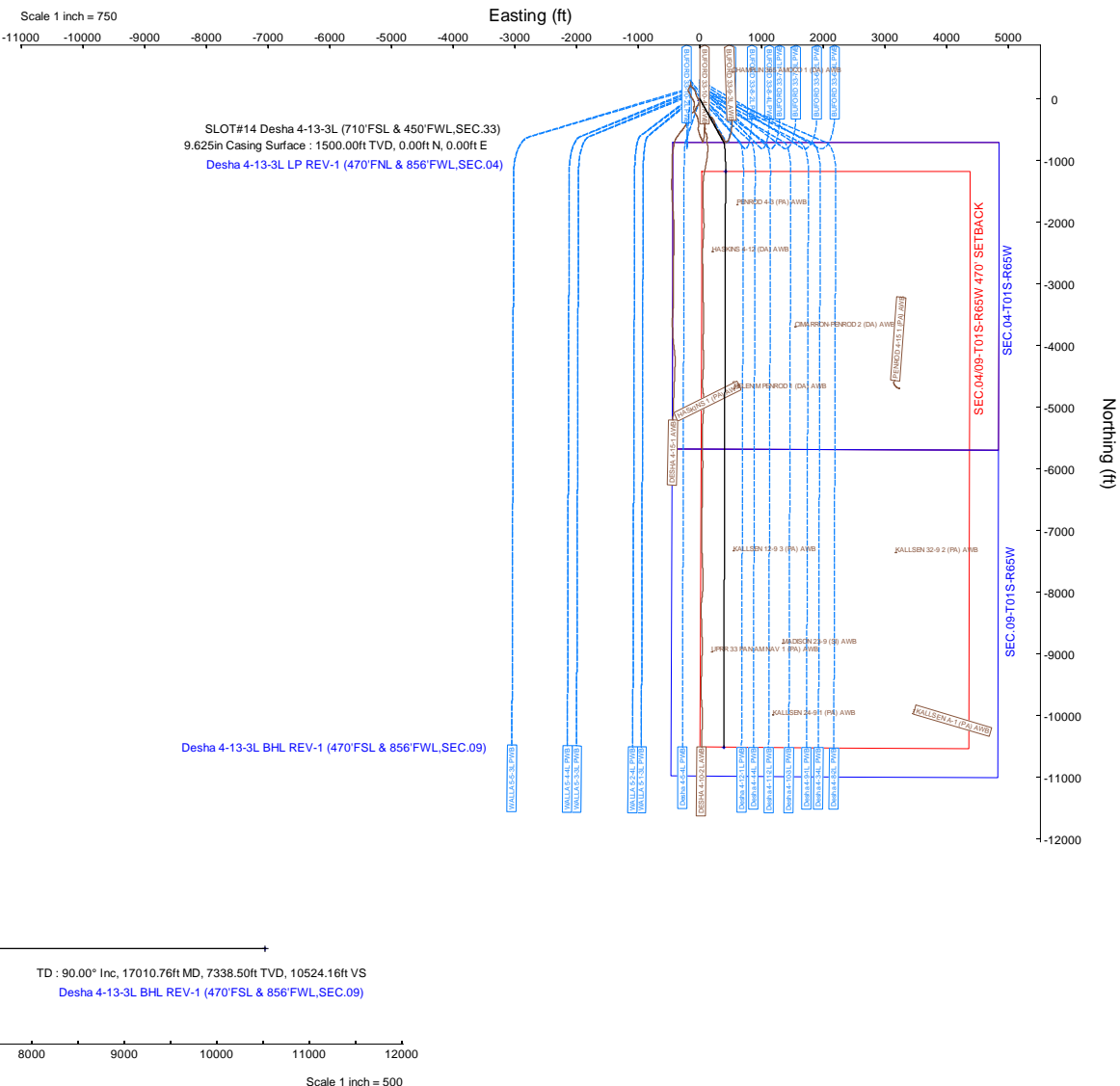
Hole and Casing Sections									
Name	Start MD (ft)	End MD (ft)	Interval (ft)	Start TVD (ft)	End TVD (ft)	Start Local N (ft)	Start Local E (ft)	End Local N (ft)	End Local E (ft)
9.625in Casing Surface	20.50	1500.00	1479.50	20.50	1500.00	0.00	0.00	0.00	0.00

Bottom Hole Location									
MD (ft)	Inc (°)	Az (°)	TVD (ft)	Local N (ft)	Local E (ft)	Grid East (US ft)	Grid North (US ft)	Latitude	Longitude
17010.76	90.000	180.188	7338.50	-10516.95	389.58	3231097.88	1234311.80	39°58'25.0320"N	104°40'31.4760"W

Targets									
Name	MD (ft)	TVD (ft)	Local N (ft)	Local E (ft)	Grid East (US ft)	Grid North (US ft)	Latitude	Longitude	
SEC.04-T01S-R65W	N/A	0.00	-25.50	0.00	3230610.94	1244798.80	40°00'8.7120"N	104°40'36.4800"W	
SEC.0409-T01S-R65W 470' SETBACK	N/A	0.00	-25.50	0.00	3230610.94	1244798.80	40°00'8.7120"N	104°40'36.4800"W	
SEC.09-T01S-R65W	N/A	0.00	-25.50	0.00	3230610.94	1244798.80	40°00'8.7120"N	104°40'36.4800"W	
Desha 4-13-3L BHL REV-1 (470°FSL & 856°FWL,SEC.09)	17010.76	7338.50	-10516.95	389.58	3231097.88	1234311.80	39°58'25.0320"N	104°40'31.4760"W	
Desha 4-13-3L LP REV-1 (470°FNL & 856°FWL,SEC.04)	7674.05	7338.50	-1180.29	420.25	3231041.88	1243648.01	39°59'57.3000"N	104°40'31.0800"W	



Well Profile Data								
Design Comment	MD (ft)	Inc (°)	Az (°)	TVD (ft)	Local N (ft)	Local E (ft)	DLS (°/100ft)	VS (ft)
Tie On	20.50	0.000	151.095	20.50	0.00	0.00	0.00	0.00
End of Tangent	1550.00	0.000	151.095	1550.00	0.00	0.00	0.00	0.00
End of Build	1995.38	8.908	151.095	1993.58	-30.25	16.70	2.00	30.84
KOP	6988.85	8.908	151.095	6926.83	-707.11	390.43	0.00	721.08
LANDING	7674.05	90.000	180.188	7338.50	-1180.29	420.25	12.00	1195.03
TD	17010.76	90.000	180.188	7338.50	-10516.95	389.58	0.00	10524.16



Planned Wellpath Report

Desha 4-13-3L PWP Rev-A.0

Page 1 of 7

REFERENCE WELLPATH IDENTIFICATION

Operator	CONFLUENCE RESOURCES	Well	Desha 4-13-3L
Field	WELD COUNTY (NAD83, TRUE NORTH)	API/Legal	
Facility	SEC.33-T01N-R65W	Wellbore	Desha 4-13-3L PWB
Slot	SLOT#14 Desha 4-13-3L (710'FSL & 450'FWL,SEC.33)		

REPORT SETUP INFORMATION

Projection System	NAD83 / Lambert Colorado SP, Northern Zone (501), US feet	Software System	WellArchitect® 6.0
North Reference	True	User	Painsetr
Scale	0.999966	Report Generated	10/7/2020 at 10:32:19 AM
Convergence at slot	0.53° East	Database	WA_Denver

WELLPATH LOCATION

	Local coordinates		Grid coordinates		Geographic coordinates	
	North[ft]	East[ft]	Easting[US ft]	Northing[US ft]	Latitude	Longitude
Slot Location	-273.21	151.28	3230610.70	1244824.30	40.0024900°	-104.6768000°
Facility Reference Pt			3230456.90	1245096.09	40.0032400°	-104.6773400°
Field Reference Pt			3230456.90	1245096.09	40.0032400°	-104.6773400°

WELLPATH DATUM

Calculation method	Minimum curvature	Rig (20.5') (RT) to Facility Vertical Datum	5098.50ft
Horizontal Reference Pt	Slot	Rig (20.5') (RT) to Mean Sea Level	5098.50ft
Vertical Reference Pt	Rig (20.5') (RT)	Rig (20.5') (RT) to Mud Line at Slot (SLOT#14 Desha 4-13-3L (710'FSL & 450'FWL,SEC.33))	5098.50ft
MD Reference Pt	Rig (20.5') (RT)	Section Origin	N 0.00, E 0.00 ft
Field Vertical Reference	Mean Sea Level	Section Azimuth	177.88°

Planned Wellpath Report

Desha 4-13-3L PWP Rev-A.0

Page 2 of 7

REFERENCE WELLPATH IDENTIFICATION

Operator	CONFLUENCE RESOURCES	Well	Desha 4-13-3L
Field	WELD COUNTY (NAD83, TRUE NORTH)	API/Legal	
Facility	SEC.33-T01N-R65W	Wellbore	Desha 4-13-3L PWB
Slot	SLOT#14 Desha 4-13-3L (710'FSL & 450'FWL,SEC.33)		

WELLPATH DATA (176 stations) † = interpolated, ‡ = extrapolated station

MD [ft]	Inclination [°]	Azimuth [°]	TVD [ft]	Vert Sect [ft]	North [ft]	East [ft]	Grid East [US ft]	Grid North [US ft]	Latitude	Longitude	DLS [°/100ft]	Comments
0.00†	0.000	151.095	0.00	0.00	0.00	0.00	3230610.70	1244824.30	40.0024900	-104.6768000	0.00	
20.50	0.000	151.095	20.50	0.00	0.00	0.00	3230610.70	1244824.30	40.0024900	-104.6768000	0.00	Tie On
120.50†	0.000	151.095	120.50	0.00	0.00	0.00	3230610.70	1244824.30	40.0024900	-104.6768000	0.00	
220.50†	0.000	151.095	220.50	0.00	0.00	0.00	3230610.70	1244824.30	40.0024900	-104.6768000	0.00	
320.50†	0.000	151.095	320.50	0.00	0.00	0.00	3230610.70	1244824.30	40.0024900	-104.6768000	0.00	
420.50†	0.000	151.095	420.50	0.00	0.00	0.00	3230610.70	1244824.30	40.0024900	-104.6768000	0.00	
520.50†	0.000	151.095	520.50	0.00	0.00	0.00	3230610.70	1244824.30	40.0024900	-104.6768000	0.00	
620.50†	0.000	151.095	620.50	0.00	0.00	0.00	3230610.70	1244824.30	40.0024900	-104.6768000	0.00	
720.50†	0.000	151.095	720.50	0.00	0.00	0.00	3230610.70	1244824.30	40.0024900	-104.6768000	0.00	
820.50†	0.000	151.095	820.50	0.00	0.00	0.00	3230610.70	1244824.30	40.0024900	-104.6768000	0.00	
920.50†	0.000	151.095	920.50	0.00	0.00	0.00	3230610.70	1244824.30	40.0024900	-104.6768000	0.00	
1020.50†	0.000	151.095	1020.50	0.00	0.00	0.00	3230610.70	1244824.30	40.0024900	-104.6768000	0.00	
1120.50†	0.000	151.095	1120.50	0.00	0.00	0.00	3230610.70	1244824.30	40.0024900	-104.6768000	0.00	
1220.50†	0.000	151.095	1220.50	0.00	0.00	0.00	3230610.70	1244824.30	40.0024900	-104.6768000	0.00	
1320.50†	0.000	151.095	1320.50	0.00	0.00	0.00	3230610.70	1244824.30	40.0024900	-104.6768000	0.00	
1420.50†	0.000	151.095	1420.50	0.00	0.00	0.00	3230610.70	1244824.30	40.0024900	-104.6768000	0.00	
1520.50†	0.000	151.095	1520.50	0.00	0.00	0.00	3230610.70	1244824.30	40.0024900	-104.6768000	0.00	
1550.00	0.000	151.095	1550.00	0.00	0.00	0.00	3230610.70	1244824.30	40.0024900	-104.6768000	0.00	End of Tangent
1620.50†	1.410	151.095	1620.49	0.77	-0.76	0.42	3230611.13	1244823.54	40.0024879	-104.6767985	2.00	
1720.50†	3.410	151.095	1720.40	4.53	-4.44	2.45	3230613.20	1244819.88	40.0024778	-104.6767912	2.00	
1820.50†	5.410	151.095	1820.10	11.39	-11.17	6.17	3230616.97	1244813.19	40.0024593	-104.6767780	2.00	
1920.50†	7.410	151.095	1919.47	21.36	-20.94	11.56	3230622.46	1244803.46	40.0024325	-104.6767587	2.00	
1995.38	8.908	151.095	1993.58	30.84	-30.25	16.70	3230627.68	1244794.21	40.0024070	-104.6767404	2.00	End of Build
2020.50†	8.908	151.095	2018.41	34.32	-33.65	18.58	3230629.59	1244790.82	40.0023976	-104.6767337	0.00	
2120.50†	8.908	151.095	2117.20	48.14	-47.21	26.07	3230637.20	1244777.34	40.0023604	-104.6767070	0.00	
2220.50†	8.908	151.095	2215.99	61.96	-60.76	33.55	3230644.81	1244763.85	40.0023232	-104.6766802	0.00	
2320.50†	8.908	151.095	2314.79	75.78	-74.32	41.03	3230652.42	1244750.37	40.0022860	-104.6766535	0.00	
2420.50†	8.908	151.095	2413.58	89.61	-87.87	48.52	3230660.03	1244736.89	40.0022488	-104.6766268	0.00	
2520.50†	8.908	151.095	2512.37	103.43	-101.43	56.00	3230667.64	1244723.40	40.0022116	-104.6766001	0.00	
2620.50†	8.908	151.095	2611.17	117.25	-114.98	63.49	3230675.25	1244709.92	40.0021744	-104.6765734	0.00	
2720.50†	8.908	151.095	2709.96	131.08	-128.54	70.97	3230682.86	1244696.43	40.0021372	-104.6765467	0.00	
2820.50†	8.908	151.095	2808.76	144.90	-142.09	78.46	3230690.47	1244682.95	40.0020999	-104.6765200	0.00	
2920.50†	8.908	151.095	2907.55	158.72	-155.65	85.94	3230698.08	1244669.46	40.0020627	-104.6764932	0.00	
3020.50†	8.908	151.095	3006.34	172.54	-169.20	93.42	3230705.69	1244655.98	40.0020255	-104.6764665	0.00	
3120.50†	8.908	151.095	3105.14	186.37	-182.76	100.91	3230713.30	1244642.49	40.0019883	-104.6764398	0.00	
3220.50†	8.908	151.095	3203.93	200.19	-196.31	108.39	3230720.91	1244629.01	40.0019511	-104.6764131	0.00	
3320.50†	8.908	151.095	3302.73	214.01	-209.87	115.88	3230728.52	1244615.53	40.0019139	-104.6763864	0.00	
3420.50†	8.908	151.095	3401.52	227.84	-223.42	123.36	3230736.13	1244602.04	40.0018767	-104.6763597	0.00	
3520.50†	8.908	151.095	3500.31	241.66	-236.98	130.85	3230743.74	1244588.56	40.0018395	-104.6763329	0.00	
3620.50†	8.908	151.095	3599.11	255.48	-250.53	138.33	3230751.35	1244575.07	40.0018023	-104.6763062	0.00	
3720.50†	8.908	151.095	3697.90	269.30	-264.09	145.82	3230758.96	1244561.59	40.0017651	-104.6762795	0.00	
3820.50†	8.908	151.095	3796.70	283.13	-277.64	153.30	3230766.57	1244548.10	40.0017278	-104.6762528	0.00	
3920.50†	8.908	151.095	3895.49	296.95	-291.20	160.78	3230774.18	1244534.62	40.0016906	-104.6762261	0.00	
4020.50†	8.908	151.095	3994.28	310.77	-304.75	168.27	3230781.79	1244521.13	40.0016534	-104.6761994	0.00	
4120.50†	8.908	151.095	4093.08	324.59	-318.31	175.75	3230789.40	1244507.65	40.0016162	-104.6761727	0.00	

REFERENCE WELLPATH IDENTIFICATION

Operator	CONFLUENCE RESOURCES	Well	Desha 4-13-3L
Field	WELD COUNTY (NAD83, TRUE NORTH)	API/Legal	
Facility	SEC.33-T01N-R65W	Wellbore	Desha 4-13-3L PWB
Slot	SLOT#14 Desha 4-13-3L (710'FSL & 450'FWL,SEC.33)		

WELLPATH DATA (176 stations) † = interpolated, ‡ = extrapolated station

MD [ft]	Inclination [°]	Azimuth [°]	TVD [ft]	Vert Sect [ft]	North [ft]	East [ft]	Grid East [US ft]	Grid North [US ft]	Latitude	Longitude	DLS [°/100ft]	Comments
4220.50†	8.908	151.095	4191.87	338.42	-331.86	183.24	3230797.01	1244494.17	40.0015790	-104.6761459	0.00	
4320.50†	8.908	151.095	4290.67	352.24	-345.42	190.72	3230804.62	1244480.68	40.0015418	-104.6761192	0.00	
4420.50†	8.908	151.095	4389.46	366.06	-358.97	198.21	3230812.23	1244467.20	40.0015046	-104.6760925	0.00	
4520.50†	8.908	151.095	4488.25	379.89	-372.53	205.69	3230819.84	1244453.71	40.0014674	-104.6760658	0.00	
4620.50†	8.908	151.095	4587.05	393.71	-386.08	213.18	3230827.45	1244440.23	40.0014302	-104.6760391	0.00	
4720.50†	8.908	151.095	4685.84	407.53	-399.64	220.66	3230835.05	1244426.74	40.0013930	-104.6760124	0.00	
4820.50†	8.908	151.095	4784.64	421.35	-413.19	228.14	3230842.66	1244413.26	40.0013557	-104.6759857	0.00	
4920.50†	8.908	151.095	4883.43	435.18	-426.75	235.63	3230850.27	1244399.77	40.0013185	-104.6759589	0.00	
5020.50†	8.908	151.095	4982.22	449.00	-440.30	243.11	3230857.88	1244386.29	40.0012813	-104.6759322	0.00	
5120.50†	8.908	151.095	5081.02	462.82	-453.86	250.60	3230865.49	1244372.80	40.0012441	-104.6759055	0.00	
5220.50†	8.908	151.095	5179.81	476.65	-467.41	258.08	3230873.10	1244359.32	40.0012069	-104.6758788	0.00	
5320.50†	8.908	151.095	5278.61	490.47	-480.97	265.57	3230880.71	1244345.84	40.0011697	-104.6758521	0.00	
5420.50†	8.908	151.095	5377.40	504.29	-494.52	273.05	3230888.32	1244332.35	40.0011325	-104.6758254	0.00	
5520.50†	8.908	151.095	5476.19	518.11	-508.08	280.53	3230895.93	1244318.87	40.0010953	-104.6757987	0.00	
5620.50†	8.908	151.095	5574.99	531.94	-521.63	288.02	3230903.54	1244305.38	40.0010581	-104.6757719	0.00	
5720.50†	8.908	151.095	5673.78	545.76	-535.19	295.50	3230911.15	1244291.90	40.0010209	-104.6757452	0.00	
5820.50†	8.908	151.095	5772.58	559.58	-548.74	302.99	3230918.76	1244278.41	40.0009836	-104.6757185	0.00	
5920.50†	8.908	151.095	5871.37	573.40	-562.30	310.47	3230926.37	1244264.93	40.0009464	-104.6756918	0.00	
6020.50†	8.908	151.095	5970.16	587.23	-575.85	317.96	3230933.98	1244251.44	40.0009092	-104.6756651	0.00	
6120.50†	8.908	151.095	6068.96	601.05	-589.41	325.44	3230941.59	1244237.96	40.0008720	-104.6756384	0.00	
6220.50†	8.908	151.095	6167.75	614.87	-602.96	332.93	3230949.20	1244224.48	40.0008348	-104.6756117	0.00	
6320.50†	8.908	151.095	6266.55	628.70	-616.52	340.41	3230956.81	1244210.99	40.0007976	-104.6755849	0.00	
6420.50†	8.908	151.095	6365.34	642.52	-630.07	347.89	3230964.42	1244197.51	40.0007604	-104.6755582	0.00	
6520.50†	8.908	151.095	6464.13	656.34	-643.63	355.38	3230972.03	1244184.02	40.0007232	-104.6755315	0.00	
6620.50†	8.908	151.095	6562.93	670.16	-657.18	362.86	3230979.64	1244170.54	40.0006860	-104.6755048	0.00	
6720.50†	8.908	151.095	6661.72	683.99	-670.74	370.35	3230987.25	1244157.05	40.0006488	-104.6754781	0.00	
6820.50†	8.908	151.095	6760.51	697.81	-684.29	377.83	3230994.86	1244143.57	40.0006115	-104.6754514	0.00	
6920.50†	8.908	151.095	6859.31	711.63	-697.85	385.32	3231002.47	1244130.08	40.0005743	-104.6754247	0.00	
6988.85	8.908	151.095	6926.83	721.08	-707.11	390.43	3231007.67	1244120.87	40.0005489	-104.6754064	0.00	KOP
7020.50†	12.357	159.832	6957.94	726.49	-712.44	392.78	3231010.07	1244115.56	40.0005343	-104.6753980	12.00	
7120.50†	23.951	170.310	7052.82	756.90	-742.60	399.92	3231017.48	1244085.47	40.0004515	-104.6753726	12.00	
7220.50†	35.805	174.124	7139.38	806.39	-791.89	406.35	3231024.37	1244036.25	40.0003162	-104.6753496	12.00	
7320.50†	47.726	176.216	7213.84	872.80	-858.14	411.81	3231030.44	1243970.05	40.0001343	-104.6753301	12.00	
7420.50†	59.672	177.633	7272.94	953.23	-938.47	416.05	3231035.43	1243889.76	39.9999138	-104.6753150	12.00	
7520.50†	71.630	178.738	7314.09	1044.17	-1029.37	418.89	3231039.11	1243798.90	39.9996643	-104.6753049	12.00	
7620.50†	83.593	179.698	7335.51	1141.63	-1126.85	420.20	3231041.33	1243701.44	39.9993967	-104.6753002	12.00	
7674.05	90.000	180.188	7338.50†	1195.03	-1180.29	420.25	3231041.88	1243648.01	39.9992500	-104.6753000	12.00	LANDING
7720.50†	90.000	180.188	7338.50	1241.45	-1226.74	420.10	3231042.15	1243601.56	39.9991225	-104.6753005	0.00	
7820.50†	90.000	180.188	7338.50	1341.37	-1326.74	419.77	3231042.75	1243501.56	39.9988480	-104.6753017	0.00	
7920.50†	90.000	180.188	7338.50	1441.29	-1426.74	419.44	3231043.35	1243401.57	39.9985735	-104.6753029	0.00	
8020.50†	90.000	180.188	7338.50	1541.21	-1526.74	419.11	3231043.95	1243301.57	39.9982990	-104.6753041	0.00	
8120.50†	90.000	180.188	7338.50	1641.13	-1626.74	418.78	3231044.55	1243201.58	39.9980244	-104.6753053	0.00	
8220.50†	90.000	180.188	7338.50	1741.04	-1726.74	418.45	3231045.15	1243101.58	39.9977499	-104.6753064	0.00	
8320.50†	90.000	180.188	7338.50	1840.96	-1826.74	418.13	3231045.75	1243001.59	39.9974754	-104.6753076	0.00	
8420.50†	90.000	180.188	7338.50	1940.88	-1926.74	417.80	3231046.35	1242901.59	39.9972009	-104.6753088	0.00	

Planned Wellpath Report

Desha 4-13-3L PWP Rev-A.0

Page 4 of 7

REFERENCE WELLPATH IDENTIFICATION

Operator	CONFLUENCE RESOURCES	Well	Desha 4-13-3L
Field	WELD COUNTY (NAD83, TRUE NORTH)	API/Legal	
Facility	SEC.33-T01N-R65W	Wellbore	Desha 4-13-3L PWB
Slot	SLOT#14 Desha 4-13-3L (710'FSL & 450'FWL,SEC.33)		

WELLPATH DATA (176 stations) † = interpolated, ‡ = extrapolated station

MD [ft]	Inclination [°]	Azimuth [°]	TVD [ft]	Vert Sect [ft]	North [ft]	East [ft]	Grid East [US ft]	Grid North [US ft]	Latitude	Longitude	DLS [°/100ft]	Comments
8520.50†	90.000	180.188	7338.50	2040.80	-2026.74	417.47	3231046.95	1242801.60	39.9969264	-104.6753100	0.00	
8620.50†	90.000	180.188	7338.50	2140.72	-2126.74	417.14	3231047.55	1242701.60	39.9966519	-104.6753112	0.00	
8720.50†	90.000	180.188	7338.50	2240.64	-2226.74	416.81	3231048.15	1242601.61	39.9963774	-104.6753123	0.00	
8820.50†	90.000	180.188	7338.50	2340.56	-2326.73	416.48	3231048.75	1242501.62	39.9961029	-104.6753135	0.00	
8920.50†	90.000	180.188	7338.50	2440.48	-2426.73	416.16	3231049.35	1242401.62	39.9958284	-104.6753147	0.00	
9020.50†	90.000	180.188	7338.50	2540.39	-2526.73	415.83	3231049.95	1242301.63	39.9955539	-104.6753159	0.00	
9120.50†	90.000	180.188	7338.50	2640.31	-2626.73	415.50	3231050.55	1242201.63	39.9952794	-104.6753170	0.00	
9220.50†	90.000	180.188	7338.50	2740.23	-2726.73	415.17	3231051.15	1242101.64	39.9950049	-104.6753182	0.00	
9320.50†	90.000	180.188	7338.50	2840.15	-2826.73	414.84	3231051.75	1242001.64	39.9947304	-104.6753194	0.00	
9420.50†	90.000	180.188	7338.50	2940.07	-2926.73	414.51	3231052.35	1241901.65	39.9944559	-104.6753206	0.00	
9520.50†	90.000	180.188	7338.50	3039.99	-3026.73	414.18	3231052.95	1241801.65	39.9941813	-104.6753218	0.00	
9620.50†	90.000	180.188	7338.50	3139.91	-3126.73	413.86	3231053.55	1241701.66	39.9939068	-104.6753229	0.00	
9720.50†	90.000	180.188	7338.50	3239.83	-3226.73	413.53	3231054.15	1241601.66	39.9936323	-104.6753241	0.00	
9820.50†	90.000	180.188	7338.50	3339.74	-3326.73	413.20	3231054.75	1241501.67	39.9933578	-104.6753253	0.00	
9920.50†	90.000	180.188	7338.50	3439.66	-3426.73	412.87	3231055.35	1241401.67	39.9930833	-104.6753265	0.00	
10020.50†	90.000	180.188	7338.50	3539.58	-3526.73	412.54	3231055.95	1241301.68	39.9928088	-104.6753277	0.00	
10120.50†	90.000	180.188	7338.50	3639.50	-3626.73	412.21	3231056.55	1241201.69	39.9925343	-104.6753288	0.00	
10220.50†	90.000	180.188	7338.50	3739.42	-3726.73	411.88	3231057.15	1241101.69	39.9922598	-104.6753300	0.00	
10320.50†	90.000	180.188	7338.50	3839.34	-3826.73	411.56	3231057.75	1241001.70	39.9919853	-104.6753312	0.00	
10420.50†	90.000	180.188	7338.50	3939.26	-3926.73	411.23	3231058.35	1240901.70	39.9917108	-104.6753324	0.00	
10520.50†	90.000	180.188	7338.50	4039.18	-4026.73	410.90	3231058.95	1240801.71	39.9914363	-104.6753335	0.00	
10620.50†	90.000	180.188	7338.50	4139.09	-4126.72	410.57	3231059.55	1240701.71	39.9911618	-104.6753347	0.00	
10720.50†	90.000	180.188	7338.50	4239.01	-4226.72	410.24	3231060.15	1240601.72	39.9908873	-104.6753359	0.00	
10820.50†	90.000	180.188	7338.50	4338.93	-4326.72	409.91	3231060.75	1240501.72	39.9906127	-104.6753371	0.00	
10920.50†	90.000	180.188	7338.50	4438.85	-4426.72	409.59	3231061.35	1240401.73	39.9903382	-104.6753383	0.00	
11020.50†	90.000	180.188	7338.50	4538.77	-4526.72	409.26	3231061.95	1240301.73	39.9900637	-104.6753394	0.00	
11120.50†	90.000	180.188	7338.50	4638.69	-4626.72	408.93	3231062.55	1240201.74	39.9897892	-104.6753406	0.00	
11220.50†	90.000	180.188	7338.50	4738.61	-4726.72	408.60	3231063.15	1240101.74	39.9895147	-104.6753418	0.00	
11320.50†	90.000	180.188	7338.50	4838.53	-4826.72	408.27	3231063.75	1240001.75	39.9892402	-104.6753430	0.00	
11420.50†	90.000	180.188	7338.50	4938.44	-4926.72	407.94	3231064.35	1239901.76	39.9889657	-104.6753441	0.00	
11520.50†	90.000	180.188	7338.50	5038.36	-5026.72	407.61	3231064.95	1239801.76	39.9886912	-104.6753453	0.00	
11620.50†	90.000	180.188	7338.50	5138.28	-5126.72	407.29	3231065.55	1239701.77	39.9884167	-104.6753465	0.00	
11720.50†	90.000	180.188	7338.50	5238.20	-5226.72	406.96	3231066.15	1239601.77	39.9881422	-104.6753477	0.00	
11820.50†	90.000	180.188	7338.50	5338.12	-5326.72	406.63	3231066.75	1239501.78	39.9878677	-104.6753489	0.00	
11920.50†	90.000	180.188	7338.50	5438.04	-5426.72	406.30	3231067.35	1239401.78	39.9875932	-104.6753500	0.00	
12020.50†	90.000	180.188	7338.50	5537.96	-5526.72	405.97	3231067.95	1239301.79	39.9873187	-104.6753512	0.00	
12120.50†	90.000	180.188	7338.50	5637.88	-5626.72	405.64	3231068.55	1239201.79	39.9870441	-104.6753524	0.00	
12220.50†	90.000	180.188	7338.50	5737.79	-5726.72	405.31	3231069.15	1239101.80	39.9867696	-104.6753536	0.00	
12320.50†	90.000	180.188	7338.50	5837.71	-5826.72	404.99	3231069.75	1239001.80	39.9864951	-104.6753548	0.00	
12420.50†	90.000	180.188	7338.50	5937.63	-5926.72	404.66	3231070.35	1238901.81	39.9862206	-104.6753559	0.00	
12520.50†	90.000	180.188	7338.50	6037.55	-6026.71	404.33	3231070.95	1238801.81	39.9859461	-104.6753571	0.00	
12620.50†	90.000	180.188	7338.50	6137.47	-6126.71	404.00	3231071.55	1238701.82	39.9856716	-104.6753583	0.00	
12720.50†	90.000	180.188	7338.50	6237.39	-6226.71	403.67	3231072.14	1238601.82	39.9853971	-104.6753595	0.00	
12820.50†	90.000	180.188	7338.50	6337.31	-6326.71	403.34	3231072.74	1238501.83	39.9851226	-104.6753606	0.00	
12920.50†	90.000	180.188	7338.50	6437.23	-6426.71	403.01	3231073.34	1238401.84	39.9848481	-104.6753618	0.00	

Planned Wellpath Report

Desha 4-13-3L PWP Rev-A.0

Page 5 of 7

REFERENCE WELLPATH IDENTIFICATION

Operator	CONFLUENCE RESOURCES	Well	Desha 4-13-3L
Field	WELD COUNTY (NAD83, TRUE NORTH)	API/Legal	
Facility	SEC.33-T01N-R65W	Wellbore	Desha 4-13-3L PWB
Slot	SLOT#14 Desha 4-13-3L (710'FSL & 450'FWL,SEC.33)		

WELLPATH DATA (176 stations) † = interpolated, ‡ = extrapolated station

MD [ft]	Inclination [°]	Azimuth [°]	TVD [ft]	Vert Sect [ft]	North [ft]	East [ft]	Grid East [US ft]	Grid North [US ft]	Latitude	Longitude	DLS [°/100ft]	Comments
13020.50†	90.000	180.188	7338.50	6537.14	-6526.71	402.69	3231073.94	1238301.84	39.9845736	-104.6753630	0.00	
13120.50†	90.000	180.188	7338.50	6637.06	-6626.71	402.36	3231074.54	1238201.85	39.9842991	-104.6753642	0.00	
13220.50†	90.000	180.188	7338.50	6736.98	-6726.71	402.03	3231075.14	1238101.85	39.9840246	-104.6753654	0.00	
13320.50†	90.000	180.188	7338.50	6836.90	-6826.71	401.70	3231075.74	1238001.86	39.9837501	-104.6753665	0.00	
13420.50†	90.000	180.188	7338.50	6936.82	-6926.71	401.37	3231076.34	1237901.86	39.9834755	-104.6753677	0.00	
13520.50†	90.000	180.188	7338.50	7036.74	-7026.71	401.04	3231076.94	1237801.87	39.9832010	-104.6753689	0.00	
13620.50†	90.000	180.188	7338.50	7136.66	-7126.71	400.72	3231077.54	1237701.87	39.9829265	-104.6753701	0.00	
13720.50†	90.000	180.188	7338.50	7236.58	-7226.71	400.39	3231078.14	1237601.88	39.9826520	-104.6753712	0.00	
13820.50†	90.000	180.188	7338.50	7336.50	-7326.71	400.06	3231078.74	1237501.88	39.9823775	-104.6753724	0.00	
13920.50†	90.000	180.188	7338.50	7436.41	-7426.71	399.73	3231079.34	1237401.89	39.9821030	-104.6753736	0.00	
14020.50†	90.000	180.188	7338.50	7536.33	-7526.71	399.40	3231079.94	1237301.89	39.9818285	-104.6753748	0.00	
14120.50†	90.000	180.188	7338.50	7636.25	-7626.71	399.07	3231080.54	1237201.90	39.9815540	-104.6753760	0.00	
14220.50†	90.000	180.188	7338.50	7736.17	-7726.71	398.74	3231081.14	1237101.91	39.9812795	-104.6753771	0.00	
14320.50†	90.000	180.188	7338.50	7836.09	-7826.70	398.42	3231081.74	1237001.91	39.9810050	-104.6753783	0.00	
14420.50†	90.000	180.188	7338.50	7936.01	-7926.70	398.09	3231082.34	1236901.92	39.9807305	-104.6753795	0.00	
14520.50†	90.000	180.188	7338.50	8035.93	-8026.70	397.76	3231082.94	1236801.92	39.9804560	-104.6753807	0.00	
14620.50†	90.000	180.188	7338.50	8135.85	-8126.70	397.43	3231083.54	1236701.93	39.9801814	-104.6753818	0.00	
14720.50†	90.000	180.188	7338.50	8235.76	-8226.70	397.10	3231084.14	1236601.93	39.9799069	-104.6753830	0.00	
14820.50†	90.000	180.188	7338.50	8335.68	-8326.70	396.77	3231084.74	1236501.94	39.9796324	-104.6753842	0.00	
14920.50†	90.000	180.188	7338.50	8435.60	-8426.70	396.44	3231085.34	1236401.94	39.9793579	-104.6753854	0.00	
15020.50†	90.000	180.188	7338.50	8535.52	-8526.70	396.12	3231085.94	1236301.95	39.9790834	-104.6753866	0.00	
15120.50†	90.000	180.188	7338.50	8635.44	-8626.70	395.79	3231086.54	1236201.95	39.9788089	-104.6753877	0.00	
15220.50†	90.000	180.188	7338.50	8735.36	-8726.70	395.46	3231087.14	1236101.96	39.9785344	-104.6753889	0.00	
15320.50†	90.000	180.188	7338.50	8835.28	-8826.70	395.13	3231087.74	1236001.96	39.9782599	-104.6753901	0.00	
15420.50†	90.000	180.188	7338.50	8935.20	-8926.70	394.80	3231088.34	1235901.97	39.9779854	-104.6753913	0.00	
15520.50†	90.000	180.188	7338.50	9035.11	-9026.70	394.47	3231088.94	1235801.98	39.9777109	-104.6753924	0.00	
15620.50†	90.000	180.188	7338.50	9135.03	-9126.70	394.15	3231089.54	1235701.98	39.9774364	-104.6753936	0.00	
15720.50†	90.000	180.188	7338.50	9234.95	-9226.70	393.82	3231090.14	1235601.99	39.9771619	-104.6753948	0.00	
15820.50†	90.000	180.188	7338.50	9334.87	-9326.70	393.49	3231090.74	1235501.99	39.9768874	-104.6753960	0.00	
15920.50†	90.000	180.188	7338.50	9434.79	-9426.70	393.16	3231091.34	1235402.00	39.9766128	-104.6753972	0.00	
16020.50†	90.000	180.188	7338.50	9534.71	-9526.70	392.83	3231091.94	1235302.00	39.9763383	-104.6753983	0.00	
16120.50†	90.000	180.188	7338.50	9634.63	-9626.70	392.50	3231092.54	1235202.01	39.9760638	-104.6753995	0.00	
16220.50†	90.000	180.188	7338.50	9734.55	-9726.69	392.17	3231093.14	1235102.01	39.9757893	-104.6754007	0.00	
16320.50†	90.000	180.188	7338.50	9834.46	-9826.69	391.85	3231093.74	1235002.02	39.9755148	-104.6754019	0.00	
16420.50†	90.000	180.188	7338.50	9934.38	-9926.69	391.52	3231094.34	1234902.02	39.9752403	-104.6754030	0.00	
16520.50†	90.000	180.188	7338.50	10034.30	-10026.69	391.19	3231094.94	1234802.03	39.9749658	-104.6754042	0.00	
16620.50†	90.000	180.188	7338.50	10134.22	-10126.69	390.86	3231095.54	1234702.03	39.9746913	-104.6754054	0.00	
16720.50†	90.000	180.188	7338.50	10234.14	-10226.69	390.53	3231096.14	1234602.04	39.9744168	-104.6754066	0.00	
16820.50†	90.000	180.188	7338.50	10334.06	-10326.69	390.20	3231096.74	1234502.05	39.9741423	-104.6754078	0.00	
16920.50†	90.000	180.188	7338.50	10433.98	-10426.69	389.87	3231097.34	1234402.05	39.9738678	-104.6754089	0.00	
17010.76	90.000	180.188	7338.50 ²	10524.16	-10516.95	389.58	3231097.88	1234311.80	39.9736200	-104.6754100	0.00	TD

REFERENCE WELLPATH IDENTIFICATION

Operator	CONFLUENCE RESOURCES	Well	Desha 4-13-3L
Field	WELD COUNTY (NAD83, TRUE NORTH)	API/Legal	
Facility	SEC.33-T01N-R65W	Wellbore	Desha 4-13-3L PWB
Slot	SLOT#14 Desha 4-13-3L (710'FSL & 450'FWL,SEC.33)		

HOLE & CASING SECTIONS - Ref Wellbore: Desha 4-13-3L PWB Ref Wellpath: Desha 4-13-3L PWP Rev-A.0

String/Diameter	Start MD [ft]	End MD [ft]	Interval [ft]	Start TVD [ft]	End TVD [ft]	Start N/S [ft]	Start E/W [ft]	End N/S [ft]	End E/W [ft]
9.625in Casing Surface	20.50	1500.00	1479.50	20.50	1500.00	0.00	0.00	0.00	0.00

TARGETS

Name	MD [ft]	TVD [ft]	North [ft]	East [ft]	Grid East [US ft]	Grid North [US ft]	Latitude	Longitude	Shape
SEC.04-T01S-R65W	N/A	0.00	-25.50	0.00	3230610.94	1244798.80	40.0024200	-104.6768000	polygon
2D Polygon: dimensions not calculated									
SEC.04/09-T01S-R65W 470' SETBACK	N/A	0.00	-25.50	0.00	3230610.94	1244798.80	40.0024200	-104.6768000	polygon
2D Polygon: dimensions not calculated									
SEC.09-T01S-R65W	N/A	0.00	-25.50	0.00	3230610.94	1244798.80	40.0024200	-104.6768000	polygon
2D Polygon: dimensions not calculated									
2) Desha 4-13-3L BHL REV-1 (470'FSL & 856'FWL,SEC.09)	17010.76	7338.50	-10516.95	389.58	3231097.88	1234311.80	39.9736200	-104.6754100	point
1) Desha 4-13-3L LP REV-1 (470'FNL & 856'FWL,SEC.04)	7674.05	7338.50	-1180.29	420.25	3231041.88	1243648.01	39.9992500	-104.6753000	point

SURVEY PROGRAM - Ref Wellbore: Desha 4-13-3L PWB Ref Wellpath: Desha 4-13-3L PWP Rev-A.0

Start MD [ft]	End MD [ft]	Positional Uncertainty Model	Log Name/Comment	Wellbore
20.50	1500.00	BH NaviTrak (2019) (Axial)		Desha 4-13-3L PWB
1500.00	17053.87	BH AutoTrak Curve/eXpress (2019) (Short spacing)		Desha 4-13-3L PWB

Planned Wellpath Report

Desha 4-13-3L PWP Rev-A.0

Page 7 of 7

REFERENCE WELLPATH IDENTIFICATION

Operator	CONFLUENCE RESOURCES	Well	Desha 4-13-3L
Field	WELD COUNTY (NAD83, TRUE NORTH)	API/Legal	
Facility	SEC.33-T01N-R65W	Wellbore	Desha 4-13-3L PWB
Slot	SLOT#14 Desha 4-13-3L (710'FSL & 450'FWL,SEC.33)		

DESIGN COMMENTS

MD [ft]	Inclination [°]	Azimuth [°]	TVD [ft]	Comment
20.50	0.000	151.095	20.50	Tie On
1550.00	0.000	151.095	1550.00	End of Tangent
1995.38	8.908	151.095	1993.58	End of Build
6988.85	8.908	151.095	6926.83	KOP
7674.05	90.000	180.188	7338.50	LANDING
17010.76	90.000	180.188	7338.50	TD