

# CONFLUENCE RESOURCES

Location:	COLORADO	Slot:	SLOT#19 Desha 4-9-1L (835'FSL & 450'FWL,SEC.33)
Field:	WELD COUNTY (NAD83, TRUE NORTH)	Well:	Desha 4-9-1L
Facility:	SEC.33-T01N-R65W	Wellbore:	Desha 4-9-1L PWB
Plot reference wellpath is Desha 4-9-1L PWP RevA.0		Grid System: NAD83 / Lambert Colorado SP, Northern Zone (501), US feet	
True vertical depths are referenced to Rig (20.5) (RT)		North Reference: True north	
Reference wellpath measured depths are referenced to Rig (20.5) (RT)		Scale: True distance	
Rig (20.5) to Mean Sea Level: 5098.5 feet		Coordinates are in feet referenced to Slot	
Mean Sea Level to Mud line (At Slot: SLOT#19 Desha 4-9-1L (835'FSL & 450'FWL,SEC.33)): 0 feet		Depths are in feet	
Offset wellpath MDs are referenced to each path's default MD datum		Created by: painstr on 2020-10-07, Database: WA_Denver	

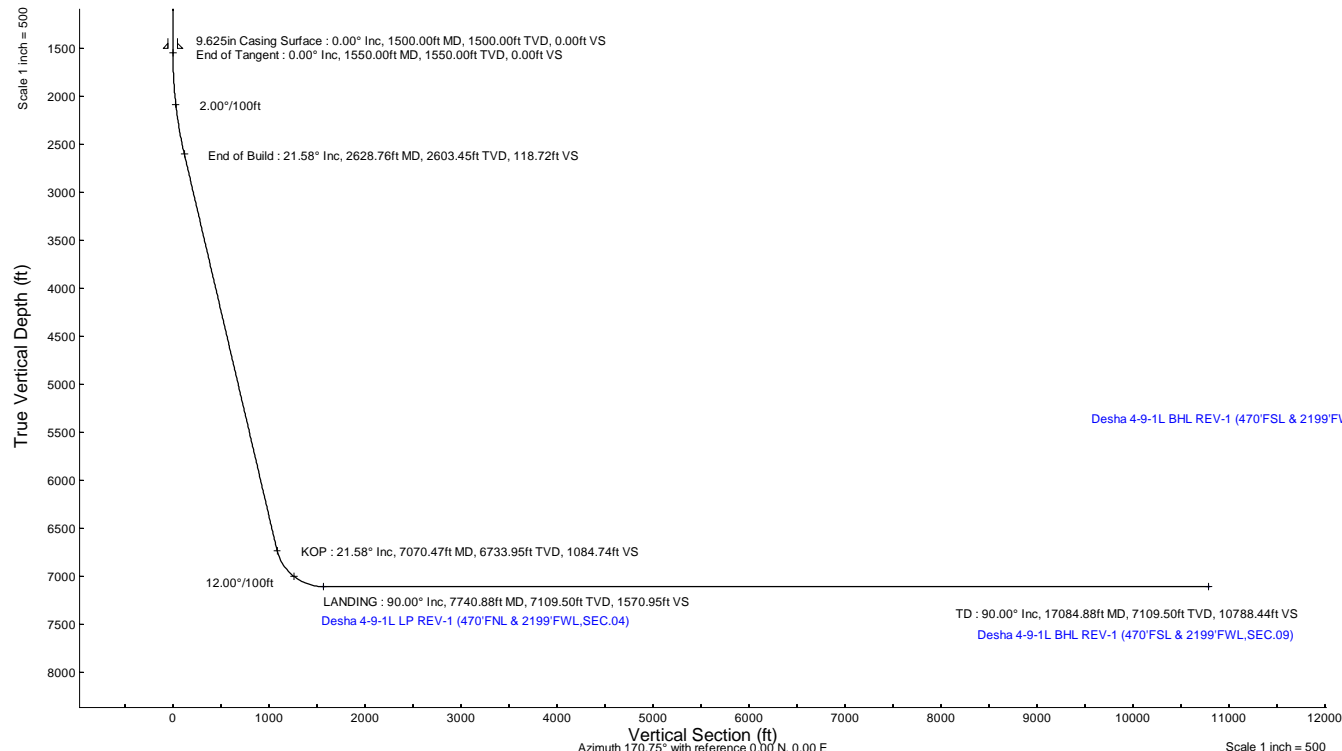
Location Information					
Facility Name		Grid East (US ft)	Grid North (US ft)	Latitude	Longitude
SEC.33-T01N-R65W		3230456.897	1245096.090	40°00'11.6640"N	104°40'38.4240"W
Slot		Local N (ft)	Local E (ft)	Grid East (US ft)	Grid North (US ft)
SLOT#19 Desha 4-9-1L (835'FSL & 450'FWL,SEC.33)		-149.36	148.48	3230606.752	1244948.122
Rig (20.5) (RT) to Mud line (At Slot: SLOT#19 Desha 4-9-1L (835'FSL & 450'FWL,SEC.33))				Latitude	Longitude
Mean Sea Level to Mud line (At Slot: SLOT#19 Desha 4-9-1L (835'FSL & 450'FWL,SEC.33))				5098.5ft	
Rig (20.5) (RT) to Mean Sea Level				0ft	

Survey Program					
Start MD (ft)	End MD (ft)	Tool	Model	Log Name/Comment	Wellbore
20.50	1500.00	BH NavTrak (2019)	BH NavTrak (2019) (Axial)		Desha 4-9-1L PWB
1500.00	17084.88	BH AutoTrak Curve/xpress (2019)	BH AutoTrak Curve/xpress (2019) (Short spacing)		Desha 4-9-1L PWB

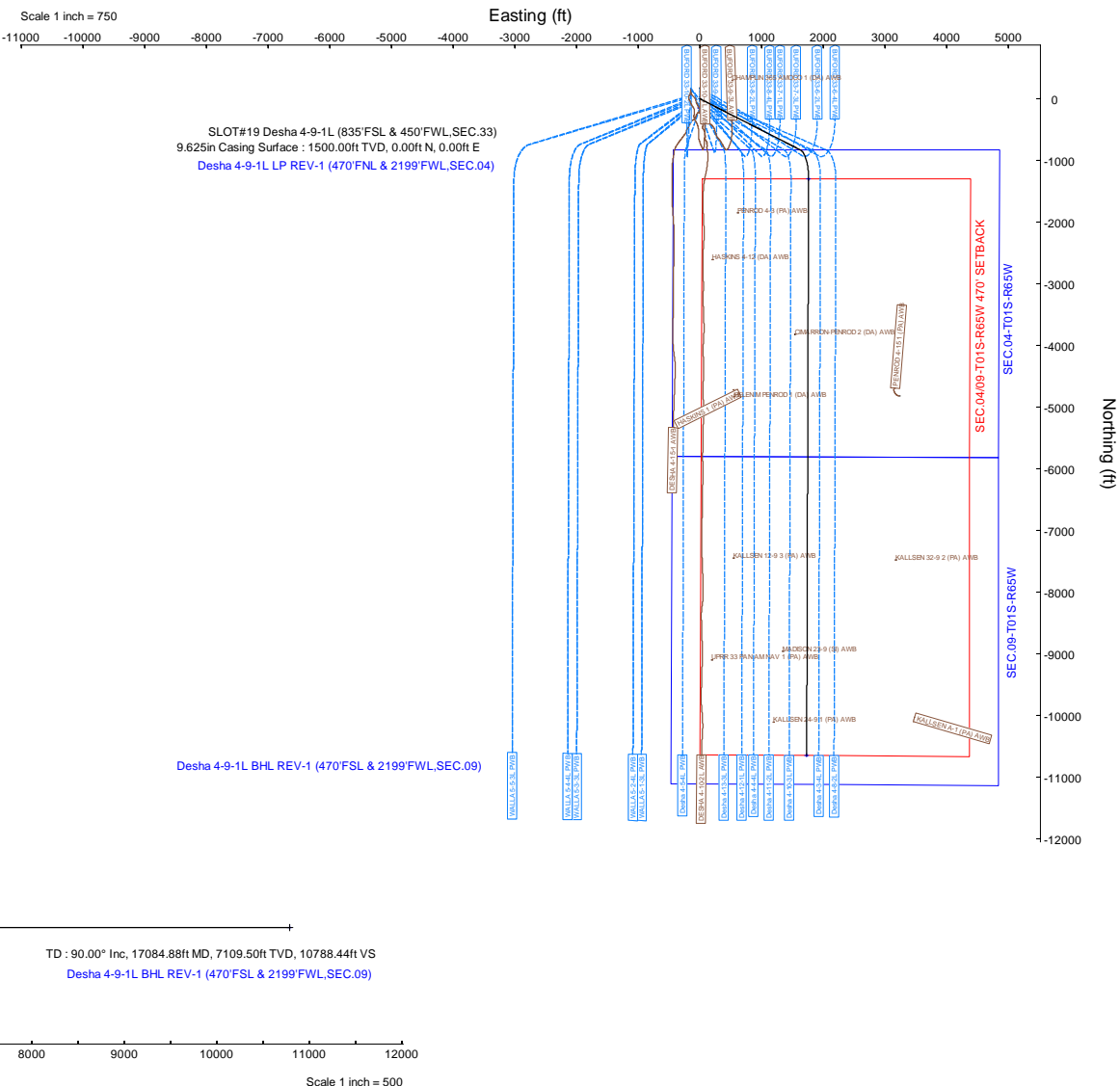
Hole and Casing Sections					
Name	Start MD (ft)	End MD (ft)	Interval (ft)	Start TVD (ft)	End TVD (ft)
9.625in Casing Surface	20.50	1500.00	1479.50	20.50	1500.00

Bottom Hole Location					
MD (ft)	Inc (°)	Az (°)	TVD (ft)	Local N (ft)	Local E (ft)
17084.88	90.000	180.185	7109.50	-10648.03	1734.88

Targets					
Name	MD (ft)	TVD (ft)	Local N (ft)	Local E (ft)	Grid East (US ft)
SEC.04-T01S-R65W	N/A	0.00	-149.36	2.80	3230610.94
SEC.0409-T01S-R65W 470' SETBACK	N/A	0.00	-149.36	2.80	3230610.94
SEC.09-T01S-R65W	N/A	0.00	-149.36	2.80	3230610.94
Desha 4-9-1L BHL REV-1 (470'FSL & 2199'FWL,SEC.09)	17084.88	7109.50	-10648.03	1734.88	3232440.34
Desha 4-9-1L LP REV-1 (470'FNL & 2199'FWL,SEC.04)	7740.88	7109.50	-1304.08	1765.05	3232383.77



Well Profile Data								
Design Comment	MD (ft)	Inc (°)	Az (°)	TVD (ft)	Local N (ft)	Local E (ft)	DLS (°/100ft)	VS (ft)
Tie On	20.50	0.000	117.006	20.50	0.00	0.00	0.00	0.00
End of Tangent	1550.00	0.000	117.006	1550.00	0.00	0.00	0.00	0.00
End of Build	2628.76	21.575	117.006	2603.45	-91.14	178.83	2.00	118.72
KOP	7070.47	21.575	117.006	6733.95	-832.81	1634.05	0.00	1084.74
LANDING	7740.88	90.000	180.185	7109.50	-1304.08	1765.05	12.00	1570.95
TD	17084.88	90.000	180.185	7109.50	-10648.03	1734.88	0.00	10788.44





# Planned Wellpath Report

Desha 4-9-1L PWP Rev-A.0

Page 1 of 7



## REFERENCE WELLPATH IDENTIFICATION

Operator	CONFLUENCE RESOURCES	Well	Desha 4-9-1L
Field	WELD COUNTY (NAD83, TRUE NORTH)	API/Legal	
Facility	SEC.33-T01N-R65W	Wellbore	Desha 4-9-1L PWB
Slot	SLOT#19 Desha 4-9-1L (835'FSL & 450'FWL,SEC.33)		

## REPORT SETUP INFORMATION

Projection System	NAD83 / Lambert Colorado SP, Northern Zone (501), US feet	Software System	WellArchitect® 6.0
North Reference	True	User	Painsetr
Scale	0.999966	Report Generated	10/7/2020 at 11:05:27 AM
Convergence at slot	0.53° East	Database	WA_Denver

## WELLPATH LOCATION

	Local coordinates		Grid coordinates		Geographic coordinates	
	North[ft]	East[ft]	Easting[US ft]	Northing[US ft]	Latitude	Longitude
Slot Location	-149.36	148.48	3230606.75	1244948.12	40.0028300°	-104.6768100°
Facility Reference Pt			3230456.90	1245096.09	40.0032400°	-104.6773400°
Field Reference Pt			3230456.90	1245096.09	40.0032400°	-104.6773400°

## WELLPATH DATUM

Calculation method	Minimum curvature	Rig (20.5') (RT) to Facility Vertical Datum	5098.50ft
Horizontal Reference Pt	Slot	Rig (20.5') (RT) to Mean Sea Level	5098.50ft
Vertical Reference Pt	Rig (20.5') (RT)	Rig (20.5') (RT) to Mud Line at Slot (SLOT#19 Desha 4-9-1L (835'FSL & 450'FWL,SEC.33))	5098.50ft
MD Reference Pt	Rig (20.5') (RT)	Section Origin	N 0.00, E 0.00 ft
Field Vertical Reference	Mean Sea Level	Section Azimuth	170.75°

# Planned Wellpath Report

Desha 4-9-1L PWP Rev-A.0

Page 2 of 7

## REFERENCE WELLPATH IDENTIFICATION

Operator	CONFLUENCE RESOURCES	Well	Desha 4-9-1L
Field	WELD COUNTY (NAD83, TRUE NORTH)	API/Legal	
Facility	SEC.33-T01N-R65W	Wellbore	Desha 4-9-1L PWB
Slot	SLOT#19 Desha 4-9-1L (835'FSL & 450'FWL,SEC.33)		

## WELLPATH DATA (177 stations) † = interpolated, ‡ = extrapolated station

MD [ft]	Inclination [°]	Azimuth [°]	TVD [ft]	Vert Sect [ft]	North [ft]	East [ft]	Grid East [US ft]	Grid North [US ft]	Latitude	Longitude	DLS [°/100ft]	Comments
0.00†	0.000	117.006	0.00	0.00	0.00	0.00	3230606.75	1244948.12	40.0028300	-104.6768100	0.00	
20.50	0.000	117.006	20.50	0.00	0.00	0.00	3230606.75	1244948.12	40.0028300	-104.6768100	0.00	Tie On
120.50†	0.000	117.006	120.50	0.00	0.00	0.00	3230606.75	1244948.12	40.0028300	-104.6768100	0.00	
220.50†	0.000	117.006	220.50	0.00	0.00	0.00	3230606.75	1244948.12	40.0028300	-104.6768100	0.00	
320.50†	0.000	117.006	320.50	0.00	0.00	0.00	3230606.75	1244948.12	40.0028300	-104.6768100	0.00	
420.50†	0.000	117.006	420.50	0.00	0.00	0.00	3230606.75	1244948.12	40.0028300	-104.6768100	0.00	
520.50†	0.000	117.006	520.50	0.00	0.00	0.00	3230606.75	1244948.12	40.0028300	-104.6768100	0.00	
620.50†	0.000	117.006	620.50	0.00	0.00	0.00	3230606.75	1244948.12	40.0028300	-104.6768100	0.00	
720.50†	0.000	117.006	720.50	0.00	0.00	0.00	3230606.75	1244948.12	40.0028300	-104.6768100	0.00	
820.50†	0.000	117.006	820.50	0.00	0.00	0.00	3230606.75	1244948.12	40.0028300	-104.6768100	0.00	
920.50†	0.000	117.006	920.50	0.00	0.00	0.00	3230606.75	1244948.12	40.0028300	-104.6768100	0.00	
1020.50†	0.000	117.006	1020.50	0.00	0.00	0.00	3230606.75	1244948.12	40.0028300	-104.6768100	0.00	
1120.50†	0.000	117.006	1120.50	0.00	0.00	0.00	3230606.75	1244948.12	40.0028300	-104.6768100	0.00	
1220.50†	0.000	117.006	1220.50	0.00	0.00	0.00	3230606.75	1244948.12	40.0028300	-104.6768100	0.00	
1320.50†	0.000	117.006	1320.50	0.00	0.00	0.00	3230606.75	1244948.12	40.0028300	-104.6768100	0.00	
1420.50†	0.000	117.006	1420.50	0.00	0.00	0.00	3230606.75	1244948.12	40.0028300	-104.6768100	0.00	
1520.50†	0.000	117.006	1520.50	0.00	0.00	0.00	3230606.75	1244948.12	40.0028300	-104.6768100	0.00	
1550.00	0.000	117.006	1550.00	0.00	0.00	0.00	3230606.75	1244948.12	40.0028300	-104.6768100	0.00	End of Tangent
1620.50†	1.410	117.006	1620.49	0.51	-0.39	0.77	3230607.53	1244947.73	40.0028289	-104.6768072	2.00	
1720.50†	3.410	117.006	1720.40	3.00	-2.30	4.52	3230611.29	1244945.86	40.0028237	-104.6767939	2.00	
1820.50†	5.410	117.006	1820.10	7.55	-5.79	11.37	3230618.17	1244942.43	40.0028141	-104.6767694	2.00	
1920.50†	7.410	117.006	1919.47	14.15	-10.86	21.32	3230628.17	1244937.46	40.0028002	-104.6767339	2.00	
2020.50†	9.410	117.006	2018.39	22.80	-17.50	34.35	3230641.26	1244930.94	40.0027819	-104.6766874	2.00	
2120.50†	11.410	117.006	2116.74	33.49	-25.71	50.44	3230657.43	1244922.88	40.0027594	-104.6766299	2.00	
2220.50†	13.410	117.006	2214.40	46.20	-35.47	69.59	3230676.67	1244913.30	40.0027326	-104.6765616	2.00	
2320.50†	15.410	117.006	2311.24	60.91	-46.77	91.76	3230698.94	1244902.21	40.0027016	-104.6764825	2.00	
2420.50†	17.410	117.006	2407.17	77.62	-59.60	116.93	3230724.23	1244889.62	40.0026664	-104.6763926	2.00	
2520.50†	19.410	117.006	2502.04	96.30	-73.94	145.07	3230752.49	1244875.54	40.0026270	-104.6762922	2.00	
2620.50†	21.410	117.006	2595.76	116.93	-89.77	176.14	3230783.71	1244859.99	40.0025836	-104.6761813	2.00	
2628.76	21.575	117.006	2603.45	118.72	-91.14	178.83	3230786.42	1244858.64	40.0025798	-104.6761717	2.00	End of Build
2720.50†	21.575	117.006	2688.76	138.67	-106.46	208.89	3230816.61	1244843.61	40.0025377	-104.6760644	0.00	
2820.50†	21.575	117.006	2781.75	160.42	-123.16	241.65	3230849.53	1244827.21	40.0024919	-104.6759474	0.00	
2920.50†	21.575	117.006	2874.75	182.17	-139.86	274.41	3230882.44	1244810.82	40.0024461	-104.6758305	0.00	
3020.50†	21.575	117.006	2967.74	203.92	-156.56	307.18	3230915.36	1244794.43	40.0024002	-104.6757135	0.00	
3120.50†	21.575	117.006	3060.73	225.66	-173.25	339.94	3230948.27	1244778.04	40.0023544	-104.6755966	0.00	
3220.50†	21.575	117.006	3153.73	247.41	-189.95	372.70	3230981.19	1244761.64	40.0023086	-104.6754797	0.00	
3320.50†	21.575	117.006	3246.72	269.16	-206.65	405.46	3231014.10	1244745.25	40.0022627	-104.6753627	0.00	
3420.50†	21.575	117.006	3339.71	290.91	-223.35	438.23	3231047.02	1244728.86	40.0022169	-104.6752458	0.00	
3520.50†	21.575	117.006	3432.71	312.66	-240.05	470.99	3231079.93	1244712.47	40.0021710	-104.6751288	0.00	
3620.50†	21.575	117.006	3525.70	334.41	-256.74	503.75	3231112.85	1244696.08	40.0021252	-104.6750119	0.00	
3720.50†	21.575	117.006	3618.69	356.16	-273.44	536.51	3231145.76	1244679.68	40.0020794	-104.6748949	0.00	
3820.50†	21.575	117.006	3711.69	377.91	-290.14	569.28	3231178.68	1244663.29	40.0020335	-104.6747780	0.00	
3920.50†	21.575	117.006	3804.68	399.66	-306.84	602.04	3231211.59	1244646.90	40.0019877	-104.6746611	0.00	
4020.50†	21.575	117.006	3897.67	421.41	-323.53	634.80	3231244.51	1244630.51	40.0019418	-104.6745441	0.00	
4120.50†	21.575	117.006	3990.67	443.15	-340.23	667.56	3231277.42	1244614.11	40.0018960	-104.6744272	0.00	

# Planned Wellpath Report

Desha 4-9-1L PWP Rev-A.0

Page 3 of 7

REFERENCE WELLPATH IDENTIFICATION			
Operator	CONFLUENCE RESOURCES	Well	Desha 4-9-1L
Field	WELD COUNTY (NAD83, TRUE NORTH)	API/Legal	
Facility	SEC.33-T01N-R65W	Wellbore	Desha 4-9-1L PWB
Slot	SLOT#19 Desha 4-9-1L (835'FSL & 450'FWL,SEC.33)		

## WELLPATH DATA (177 stations) † = interpolated, ‡ = extrapolated station

MD [ft]	Inclination [°]	Azimuth [°]	TVD [ft]	Vert Sect [ft]	North [ft]	East [ft]	Grid East [US ft]	Grid North [US ft]	Latitude	Longitude	DLS [°/100ft]	Comments
4220.50†	21.575	117.006	4083.66	464.90	-356.93	700.33	3231310.34	1244597.72	40.0018502	-104.6743102	0.00	
4320.50†	21.575	117.006	4176.66	486.65	-373.63	733.09	3231343.25	1244581.33	40.0018043	-104.6741933	0.00	
4420.50†	21.575	117.006	4269.65	508.40	-390.33	765.85	3231376.16	1244564.94	40.0017585	-104.6740763	0.00	
4520.50†	21.575	117.006	4362.64	530.15	-407.02	798.61	3231409.08	1244548.54	40.0017127	-104.6739594	0.00	
4620.50†	21.575	117.006	4455.64	551.90	-423.72	831.37	3231441.99	1244532.15	40.0016668	-104.6738425	0.00	
4720.50†	21.575	117.006	4548.63	573.65	-440.42	864.14	3231474.91	1244515.76	40.0016210	-104.6737255	0.00	
4820.50†	21.575	117.006	4641.62	595.40	-457.12	896.90	3231507.82	1244499.37	40.0015751	-104.6736086	0.00	
4920.50†	21.575	117.006	4734.62	617.15	-473.81	929.66	3231540.74	1244482.97	40.0015293	-104.6734916	0.00	
5020.50†	21.575	117.006	4827.61	638.90	-490.51	962.42	3231573.65	1244466.58	40.0014834	-104.6733747	0.00	
5120.50†	21.575	117.006	4920.60	660.64	-507.21	995.19	3231606.57	1244450.19	40.0014376	-104.6732578	0.00	
5220.50†	21.575	117.006	5013.60	682.39	-523.91	1027.95	3231639.48	1244433.80	40.0013918	-104.6731408	0.00	
5320.50†	21.575	117.006	5106.59	704.14	-540.61	1060.71	3231672.40	1244417.41	40.0013459	-104.6730239	0.00	
5420.50†	21.575	117.006	5199.59	725.89	-557.30	1093.47	3231705.31	1244401.01	40.0013001	-104.6729069	0.00	
5520.50†	21.575	117.006	5292.58	747.64	-574.00	1126.24	3231738.23	1244384.62	40.0012542	-104.6727900	0.00	
5620.50†	21.575	117.006	5385.57	769.39	-590.70	1159.00	3231771.14	1244368.23	40.0012084	-104.6726731	0.00	
5720.50†	21.575	117.006	5478.57	791.14	-607.40	1191.76	3231804.06	1244351.84	40.0011626	-104.6725561	0.00	
5820.50†	21.575	117.006	5571.56	812.89	-624.09	1224.52	3231836.97	1244335.44	40.0011167	-104.6724392	0.00	
5920.50†	21.575	117.006	5664.55	834.64	-640.79	1257.29	3231869.89	1244319.05	40.0010709	-104.6723222	0.00	
6020.50†	21.575	117.006	5757.55	856.39	-657.49	1290.05	3231902.80	1244302.66	40.0010250	-104.6722053	0.00	
6120.50†	21.575	117.006	5850.54	878.13	-674.19	1322.81	3231935.72	1244286.27	40.0009792	-104.6720884	0.00	
6220.50†	21.575	117.006	5943.53	899.88	-690.89	1355.57	3231968.63	1244269.87	40.0009334	-104.6719714	0.00	
6320.50†	21.575	117.006	6036.53	921.63	-707.58	1388.34	3232001.55	1244253.48	40.0008875	-104.6718545	0.00	
6420.50†	21.575	117.006	6129.52	943.38	-724.28	1421.10	3232034.46	1244237.09	40.0008417	-104.6717375	0.00	
6520.50†	21.575	117.006	6222.51	965.13	-740.98	1453.86	3232067.38	1244220.70	40.0007958	-104.6716206	0.00	
6620.50†	21.575	117.006	6315.51	986.88	-757.68	1486.62	3232100.29	1244204.30	40.0007500	-104.6715037	0.00	
6720.50†	21.575	117.006	6408.50	1008.63	-774.37	1519.39	3232133.21	1244187.91	40.0007041	-104.6713867	0.00	
6820.50†	21.575	117.006	6501.50	1030.38	-791.07	1552.15	3232166.12	1244171.52	40.0006583	-104.6712698	0.00	
6920.50†	21.575	117.006	6594.49	1052.13	-807.77	1584.91	3232199.04	1244155.13	40.0006125	-104.6711529	0.00	
7020.50†	21.575	117.006	6687.48	1073.88	-824.47	1617.67	3232231.95	1244138.74	40.0005666	-104.6710359	0.00	
7070.47	21.575	117.006	6733.95	1084.74	-832.81	1634.05	3232248.40	1244130.54	40.0005437	-104.6709775	0.00	KOP
7120.50†	24.705	130.095	6779.98	1098.13	-843.73	1650.25	3232264.71	1244119.77	40.0005137	-104.6709196	12.00	
7220.50†	33.275	147.656	6867.53	1139.37	-880.50	1681.03	3232295.82	1244083.29	40.0004128	-104.6708098	12.00	
7320.50†	43.358	158.240	6945.97	1198.33	-935.76	1708.53	3232323.84	1244028.29	40.0002611	-104.6707116	12.00	
7420.50†	54.102	165.386	7011.88	1272.44	-1007.10	1731.56	3232347.52	1243957.18	40.0000653	-104.6706295	12.00	
7520.50†	65.167	170.786	7062.38	1358.46	-1091.39	1749.11	3232365.85	1243873.05	39.9998339	-104.6705668	12.00	
7620.50†	76.394	175.285	7095.26	1452.63	-1184.96	1760.41	3232378.02	1243779.60	39.9995770	-104.6705265	12.00	
7720.50†	87.693	179.371	7109.09	1550.82	-1283.71	1764.97	3232383.50	1243680.90	39.9993059	-104.6705103	12.00	
7740.88	90.000	180.185	7109.50†	1570.95	-1304.08	1765.05	3232383.77	1243660.52	39.9992500	-104.6705100	12.00	LANDING
7820.50†	90.000	180.185	7109.50	1649.49	-1383.70	1764.79	3232384.25	1243580.91	39.9990314	-104.6705109	0.00	
7920.50†	90.000	180.185	7109.50	1748.13	-1483.70	1764.47	3232384.86	1243480.92	39.9987569	-104.6705121	0.00	
8020.50†	90.000	180.185	7109.50	1846.78	-1583.70	1764.15	3232385.46	1243380.92	39.9984824	-104.6705133	0.00	
8120.50†	90.000	180.185	7109.50	1945.43	-1683.70	1763.82	3232386.07	1243280.93	39.9982079	-104.6705145	0.00	
8220.50†	90.000	180.185	7109.50	2044.07	-1783.70	1763.50	3232386.67	1243180.93	39.9979334	-104.6705156	0.00	
8320.50†	90.000	180.185	7109.50	2142.72	-1883.70	1763.18	3232387.28	1243080.94	39.9976589	-104.6705168	0.00	
8420.50†	90.000	180.185	7109.50	2241.36	-1983.70	1762.86	3232387.88	1242980.94	39.9973844	-104.6705180	0.00	

# Planned Wellpath Report

Desha 4-9-1L PWP Rev-A.0

Page 4 of 7

## REFERENCE WELLPATH IDENTIFICATION

Operator	CONFLUENCE RESOURCES	Well	Desha 4-9-1L
Field	WELD COUNTY (NAD83, TRUE NORTH)	API/Legal	
Facility	SEC.33-T01N-R65W	Wellbore	Desha 4-9-1L PWB
Slot	SLOT#19 Desha 4-9-1L (835'FSL & 450'FWL,SEC.33)		

## WELLPATH DATA (177 stations) † = interpolated, ‡ = extrapolated station

MD [ft]	Inclination [°]	Azimuth [°]	TVD [ft]	Vert Sect [ft]	North [ft]	East [ft]	Grid East [US ft]	Grid North [US ft]	Latitude	Longitude	DLS [°/100ft]	Comments
8520.50†	90.000	180.185	7109.50	2340.01	-2083.70	1762.53	3232388.49	1242880.95	39.9971099	-104.6705192	0.00	
8620.50†	90.000	180.185	7109.50	2438.66	-2183.70	1762.21	3232389.09	1242780.96	39.9968354	-104.6705204	0.00	
8720.50†	90.000	180.185	7109.50	2537.30	-2283.70	1761.89	3232389.70	1242680.96	39.9965609	-104.6705215	0.00	
8820.50†	90.000	180.185	7109.50	2635.95	-2383.70	1761.56	3232390.30	1242580.97	39.9962864	-104.6705227	0.00	
8920.50†	90.000	180.185	7109.50	2734.60	-2483.70	1761.24	3232390.91	1242480.97	39.9960119	-104.6705239	0.00	
9020.50†	90.000	180.185	7109.50	2833.24	-2583.69	1760.92	3232391.52	1242380.98	39.9957374	-104.6705251	0.00	
9120.50†	90.000	180.185	7109.50	2931.89	-2683.69	1760.60	3232392.12	1242280.98	39.9954628	-104.6705262	0.00	
9220.50†	90.000	180.185	7109.50	3030.53	-2783.69	1760.27	3232392.73	1242180.99	39.9951883	-104.6705274	0.00	
9320.50†	90.000	180.185	7109.50	3129.18	-2883.69	1759.95	3232393.33	1242080.99	39.9949138	-104.6705286	0.00	
9420.50†	90.000	180.185	7109.50	3227.83	-2983.69	1759.63	3232393.94	1241981.00	39.9946393	-104.6705298	0.00	
9520.50†	90.000	180.185	7109.50	3326.47	-3083.69	1759.30	3232394.54	1241881.00	39.9943648	-104.6705310	0.00	
9620.50†	90.000	180.185	7109.50	3425.12	-3183.69	1758.98	3232395.15	1241781.01	39.9940903	-104.6705321	0.00	
9720.50†	90.000	180.185	7109.50	3523.76	-3283.69	1758.66	3232395.75	1241681.02	39.9938158	-104.6705333	0.00	
9820.50†	90.000	180.185	7109.50	3622.41	-3383.69	1758.34	3232396.36	1241581.02	39.9935413	-104.6705345	0.00	
9920.50†	90.000	180.185	7109.50	3721.06	-3483.69	1758.01	3232396.97	1241481.03	39.9932668	-104.6705357	0.00	
10020.50†	90.000	180.185	7109.50	3819.70	-3583.69	1757.69	3232397.57	1241381.03	39.9929923	-104.6705368	0.00	
10120.50†	90.000	180.185	7109.50	3918.35	-3683.69	1757.37	3232398.18	1241281.04	39.9927178	-104.6705380	0.00	
10220.50†	90.000	180.185	7109.50	4017.00	-3783.69	1757.05	3232398.78	1241181.04	39.9924433	-104.6705392	0.00	
10320.50†	90.000	180.185	7109.50	4115.64	-3883.69	1756.72	3232399.39	1241081.05	39.9921688	-104.6705404	0.00	
10420.50†	90.000	180.185	7109.50	4214.29	-3983.69	1756.40	3232399.99	1240981.05	39.9918943	-104.6705416	0.00	
10520.50†	90.000	180.185	7109.50	4312.93	-4083.69	1756.08	3232400.60	1240881.06	39.9916197	-104.6705427	0.00	
10620.50†	90.000	180.185	7109.50	4411.58	-4183.69	1755.75	3232401.20	1240781.06	39.9913452	-104.6705439	0.00	
10720.50†	90.000	180.185	7109.50	4510.23	-4283.69	1755.43	3232401.81	1240681.07	39.9910707	-104.6705451	0.00	
10820.50†	90.000	180.185	7109.50	4608.87	-4383.69	1755.11	3232402.41	1240581.07	39.9907962	-104.6705463	0.00	
10920.50†	90.000	180.185	7109.50	4707.52	-4483.68	1754.79	3232403.02	1240481.08	39.9905217	-104.6705474	0.00	
11020.50†	90.000	180.185	7109.50	4806.16	-4583.68	1754.46	3232403.63	1240381.09	39.9902472	-104.6705486	0.00	
11120.50†	90.000	180.185	7109.50	4904.81	-4683.68	1754.14	3232404.23	1240281.09	39.9899727	-104.6705498	0.00	
11220.50†	90.000	180.185	7109.50	5003.46	-4783.68	1753.82	3232404.84	1240181.10	39.9896982	-104.6705510	0.00	
11320.50†	90.000	180.185	7109.50	5102.10	-4883.68	1753.49	3232405.44	1240081.10	39.9894237	-104.6705521	0.00	
11420.50†	90.000	180.185	7109.50	5200.75	-4983.68	1753.17	3232406.05	1239981.11	39.9891492	-104.6705533	0.00	
11520.50†	90.000	180.185	7109.50	5299.39	-5083.68	1752.85	3232406.65	1239881.11	39.9888747	-104.6705545	0.00	
11620.50†	90.000	180.185	7109.50	5398.04	-5183.68	1752.53	3232407.26	1239781.12	39.9886002	-104.6705557	0.00	
11720.50†	90.000	180.185	7109.50	5496.69	-5283.68	1752.20	3232407.86	1239681.12	39.9883257	-104.6705569	0.00	
11820.50†	90.000	180.185	7109.50	5595.33	-5383.68	1751.88	3232408.47	1239581.13	39.9880511	-104.6705580	0.00	
11920.50†	90.000	180.185	7109.50	5693.98	-5483.68	1751.56	3232409.07	1239481.13	39.9877766	-104.6705592	0.00	
12020.50†	90.000	180.185	7109.50	5792.63	-5583.68	1751.23	3232409.68	1239381.14	39.9875021	-104.6705604	0.00	
12120.50†	90.000	180.185	7109.50	5891.27	-5683.68	1750.91	3232410.29	1239281.15	39.9872276	-104.6705616	0.00	
12220.50†	90.000	180.185	7109.50	5989.92	-5783.68	1750.59	3232410.89	1239181.15	39.9869531	-104.6705627	0.00	
12320.50†	90.000	180.185	7109.50	6088.56	-5883.68	1750.27	3232411.50	1239081.16	39.9866786	-104.6705639	0.00	
12420.50†	90.000	180.185	7109.50	6187.21	-5983.68	1749.94	3232412.10	1238981.16	39.9864041	-104.6705651	0.00	
12520.50†	90.000	180.185	7109.50	6285.86	-6083.68	1749.62	3232412.71	1238881.17	39.9861296	-104.6705663	0.00	
12620.50†	90.000	180.185	7109.50	6384.50	-6183.68	1749.30	3232413.31	1238781.17	39.9858551	-104.6705675	0.00	
12720.50†	90.000	180.185	7109.50	6483.15	-6283.68	1748.97	3232413.92	1238681.18	39.9855806	-104.6705686	0.00	
12820.50†	90.000	180.185	7109.50	6581.79	-6383.67	1748.65	3232414.52	1238581.18	39.9853061	-104.6705698	0.00	
12920.50†	90.000	180.185	7109.50	6680.44	-6483.67	1748.33	3232415.13	1238481.19	39.9850316	-104.6705710	0.00	





# Planned Wellpath Report

Desha 4-9-1L PWP Rev-A.0

Page 5 of 7



## REFERENCE WELLPATH IDENTIFICATION

Operator	CONFLUENCE RESOURCES	Well	Desha 4-9-1L
Field	WELD COUNTY (NAD83, TRUE NORTH)	API/Legal	
Facility	SEC.33-T01N-R65W	Wellbore	Desha 4-9-1L PWB
Slot	SLOT#19 Desha 4-9-1L (835'FSL & 450'FWL,SEC.33)		

## WELLPATH DATA (177 stations) † = interpolated, ‡ = extrapolated station

MD [ft]	Inclination [°]	Azimuth [°]	TVD [ft]	Vert Sect [ft]	North [ft]	East [ft]	Grid East [US ft]	Grid North [US ft]	Latitude	Longitude	DLS [°/100ft]	Comments
13020.50†	90.000	180.185	7109.50	6779.09	-6583.67	1748.01	3232415.73	1238381.19	39.9847571	-104.6705722	0.00	
13120.50†	90.000	180.185	7109.50	6877.73	-6683.67	1747.68	3232416.34	1238281.20	39.9844825	-104.6705733	0.00	
13220.50†	90.000	180.185	7109.50	6976.38	-6783.67	1747.36	3232416.95	1238181.20	39.9842080	-104.6705745	0.00	
13320.50†	90.000	180.185	7109.50	7075.02	-6883.67	1747.04	3232417.55	1238081.21	39.9839335	-104.6705757	0.00	
13420.50†	90.000	180.185	7109.50	7173.67	-6983.67	1746.71	3232418.16	1237981.22	39.9836590	-104.6705769	0.00	
13520.50†	90.000	180.185	7109.50	7272.32	-7083.67	1746.39	3232418.76	1237881.22	39.9833845	-104.6705780	0.00	
13620.50†	90.000	180.185	7109.50	7370.96	-7183.67	1746.07	3232419.37	1237781.23	39.9831100	-104.6705792	0.00	
13720.50†	90.000	180.185	7109.50	7469.61	-7283.67	1745.75	3232419.97	1237681.23	39.9828355	-104.6705804	0.00	
13820.50†	90.000	180.185	7109.50	7568.26	-7383.67	1745.42	3232420.58	1237581.24	39.9825610	-104.6705816	0.00	
13920.50†	90.000	180.185	7109.50	7666.90	-7483.67	1745.10	3232421.18	1237481.24	39.9822865	-104.6705828	0.00	
14020.50†	90.000	180.185	7109.50	7765.55	-7583.67	1744.78	3232421.79	1237381.25	39.9820120	-104.6705839	0.00	
14120.50†	90.000	180.185	7109.50	7864.19	-7683.67	1744.45	3232422.39	1237281.25	39.9817375	-104.6705851	0.00	
14220.50†	90.000	180.185	7109.50	7962.84	-7783.67	1744.13	3232423.00	1237181.26	39.9814630	-104.6705863	0.00	
14320.50†	90.000	180.185	7109.50	8061.49	-7883.67	1743.81	3232423.61	1237081.26	39.9811884	-104.6705875	0.00	
14420.50†	90.000	180.185	7109.50	8160.13	-7983.67	1743.49	3232424.21	1236981.27	39.9809139	-104.6705886	0.00	
14520.50†	90.000	180.185	7109.50	8258.78	-8083.67	1743.16	3232424.82	1236881.28	39.9806394	-104.6705898	0.00	
14620.50†	90.000	180.185	7109.50	8357.42	-8183.67	1742.84	3232425.42	1236781.28	39.9803649	-104.6705910	0.00	
14720.50†	90.000	180.185	7109.50	8456.07	-8283.66	1742.52	3232426.03	1236681.29	39.9800904	-104.6705922	0.00	
14820.50†	90.000	180.185	7109.50	8554.72	-8383.66	1742.19	3232426.63	1236581.29	39.9798159	-104.6705934	0.00	
14920.50†	90.000	180.185	7109.50	8653.36	-8483.66	1741.87	3232427.24	1236481.30	39.9795414	-104.6705945	0.00	
15020.50†	90.000	180.185	7109.50	8752.01	-8583.66	1741.55	3232427.84	1236381.30	39.9792669	-104.6705957	0.00	
15120.50†	90.000	180.185	7109.50	8850.65	-8683.66	1741.23	3232428.45	1236281.31	39.9789924	-104.6705969	0.00	
15220.50†	90.000	180.185	7109.50	8949.30	-8783.66	1740.90	3232429.05	1236181.31	39.9787179	-104.6705981	0.00	
15320.50†	90.000	180.185	7109.50	9047.95	-8883.66	1740.58	3232429.66	1236081.32	39.9784434	-104.6705992	0.00	
15420.50†	90.000	180.185	7109.50	9146.59	-8983.66	1740.26	3232430.27	1235981.32	39.9781689	-104.6706004	0.00	
15520.50†	90.000	180.185	7109.50	9245.24	-9083.66	1739.93	3232430.87	1235881.33	39.9778944	-104.6706016	0.00	
15620.50†	90.000	180.185	7109.50	9343.89	-9183.66	1739.61	3232431.48	1235781.33	39.9776198	-104.6706028	0.00	
15720.50†	90.000	180.185	7109.50	9442.53	-9283.66	1739.29	3232432.08	1235681.34	39.9773453	-104.6706039	0.00	
15820.50†	90.000	180.185	7109.50	9541.18	-9383.66	1738.97	3232432.69	1235581.35	39.9770708	-104.6706051	0.00	
15920.50†	90.000	180.185	7109.50	9639.82	-9483.66	1738.64	3232433.29	1235481.35	39.9767963	-104.6706063	0.00	
16020.50†	90.000	180.185	7109.50	9738.47	-9583.66	1738.32	3232433.90	1235381.36	39.9765218	-104.6706075	0.00	
16120.50†	90.000	180.185	7109.50	9837.12	-9683.66	1738.00	3232434.50	1235281.36	39.9762473	-104.6706087	0.00	
16220.50†	90.000	180.185	7109.50	9935.76	-9783.66	1737.67	3232435.11	1235181.37	39.9759728	-104.6706098	0.00	
16320.50†	90.000	180.185	7109.50	10034.41	-9883.66	1737.35	3232435.71	1235081.37	39.9756983	-104.6706110	0.00	
16420.50†	90.000	180.185	7109.50	10133.05	-9983.66	1737.03	3232436.32	1234981.38	39.9754238	-104.6706122	0.00	
16520.50†	90.000	180.185	7109.50	10231.70	-10083.66	1736.71	3232436.93	1234881.38	39.9751493	-104.6706134	0.00	
16620.50†	90.000	180.185	7109.50	10330.35	-10183.66	1736.38	3232437.53	1234781.39	39.9748748	-104.6706145	0.00	
16720.50†	90.000	180.185	7109.50	10428.99	-10283.65	1736.06	3232438.14	1234681.39	39.9746003	-104.6706157	0.00	
16820.50†	90.000	180.185	7109.50	10527.64	-10383.65	1735.74	3232438.74	1234581.40	39.9743257	-104.6706169	0.00	
16920.50†	90.000	180.185	7109.50	10626.28	-10483.65	1735.41	3232439.35	1234481.41	39.9740512	-104.6706181	0.00	
17020.50†	90.000	180.185	7109.50	10724.93	-10583.65	1735.09	3232439.95	1234381.41	39.9737767	-104.6706192	0.00	
17084.88	90.000	180.185	7109.50 <sup>2</sup>	10788.44	-10648.03	1734.88	3232440.34	1234317.03	39.9736000	-104.6706200	0.00	TD

## REFERENCE WELLPATH IDENTIFICATION

Operator	CONFLUENCE RESOURCES	Well	Desha 4-9-1L
Field	WELD COUNTY (NAD83, TRUE NORTH)	API/Legal	
Facility	SEC.33-T01N-R65W	Wellbore	Desha 4-9-1L PWB
Slot	SLOT#19 Desha 4-9-1L (835'FSL & 450'FWL,SEC.33)		

## HOLE & CASING SECTIONS - Ref Wellbore: Desha 4-9-1L PWB Ref Wellpath: Desha 4-9-1L PWP Rev-A.0

String/Diameter	Start MD [ft]	End MD [ft]	Interval [ft]	Start TVD [ft]	End TVD [ft]	Start N/S [ft]	Start E/W [ft]	End N/S [ft]	End E/W [ft]
9.625in Casing Surface	20.50	1500.00	1479.50	20.50	1500.00	0.00	0.00	0.00	0.00

## TARGETS

Name	MD [ft]	TVD [ft]	North [ft]	East [ft]	Grid East [US ft]	Grid North [US ft]	Latitude	Longitude	Shape
SEC.04-T01S-R65W	N/A	0.00	-149.36	2.80	3230610.94	1244798.80	40.0024200	-104.6768000	polygon
2D Polygon: dimensions not calculated									
SEC.04/09-T01S-R65W 470' SETBACK	N/A	0.00	-149.36	2.80	3230610.94	1244798.80	40.0024200	-104.6768000	polygon
2D Polygon: dimensions not calculated									
SEC.09-T01S-R65W	N/A	0.00	-149.36	2.80	3230610.94	1244798.80	40.0024200	-104.6768000	polygon
2D Polygon: dimensions not calculated									
2) Desha 4-9-1L BHL REV-1 (470'FSL & 2199'FWL,SEC.09)	17084.88	7109.50	-10648.03	1734.88	3232440.34	1234317.03	39.9736000	-104.6706200	point
1) Desha 4-9-1L LP REV-1 (470'FNL & 2199'FWL,SEC.04)	7740.88	7109.50	-1304.08	1765.05	3232383.77	1243660.52	39.9992500	-104.6705100	point

## SURVEY PROGRAM - Ref Wellbore: Desha 4-9-1L PWB Ref Wellpath: Desha 4-9-1L PWP Rev-A.0

Start MD [ft]	End MD [ft]	Positional Uncertainty Model	Log Name/Comment	Wellbore
20.50	1500.00	BH NaviTrak (2019) (Axial)		Desha 4-9-1L PWB
1500.00	17084.88	BH AutoTrak Curve/eXpress (2019) (Short spacing)		Desha 4-9-1L PWB

# Planned Wellpath Report

Desha 4-9-1L PWP Rev-A.0

Page 7 of 7

## REFERENCE WELLPATH IDENTIFICATION

Operator	CONFLUENCE RESOURCES	Well	Desha 4-9-1L
Field	WELD COUNTY (NAD83, TRUE NORTH)	API/Legal	
Facility	SEC.33-T01N-R65W	Wellbore	Desha 4-9-1L PWB
Slot	SLOT#19 Desha 4-9-1L (835'FSL & 450'FWL,SEC.33)		

## DESIGN COMMENTS

MD [ft]	Inclination [°]	Azimuth [°]	TVD [ft]	Comment
20.50	0.000	117.006	20.50	Tie On
1550.00	0.000	117.006	1550.00	End of Tangent
2628.76	21.575	117.006	2603.45	End of Build
7070.47	21.575	117.006	6733.95	KOP
7740.88	90.000	180.185	7109.50	LANDING
17084.88	90.000	180.185	7109.50	TD