

# CONFLUENCE RESOURCES



Location:	COLORADO	Slot:	SLOT#21 Desha 4-8-2L (885'FSL & 450'FWL,SEC.33)
Field:	WELD COUNTY (NAD83, TRUE NORTH)	Well:	Desha 4-8-2L
Facility:	SEC.33-T01N-R65W	Wellbore:	Desha 4-8-2L PWB
Plot reference wellpath is Desha 4-8-2L PWP RevA.0		Grid System: NAD83 / Lambert Colorado SP, Northern Zone (501), US feet	
True vertical depths are referenced to Rig (20.5) (RT)		North Reference: True north	
Reference wellpath measured depths are referenced to Rig (20.5) (RT)		Scale: True distance	
Rig (20.5) to Mean Sea Level: 5098.5 feet		Coordinates are in feet referenced to Slot	
Mean Sea Level to Mud line (At Slot: SLOT#21 Desha 4-8-2L (885'FSL & 450'FWL,SEC.33)): 0 feet		Depths are in feet	
Offset wellpath MDs are referenced to each path's default MD datum		Created by: painstr on 2020-10-07, Database: WA_Denver	

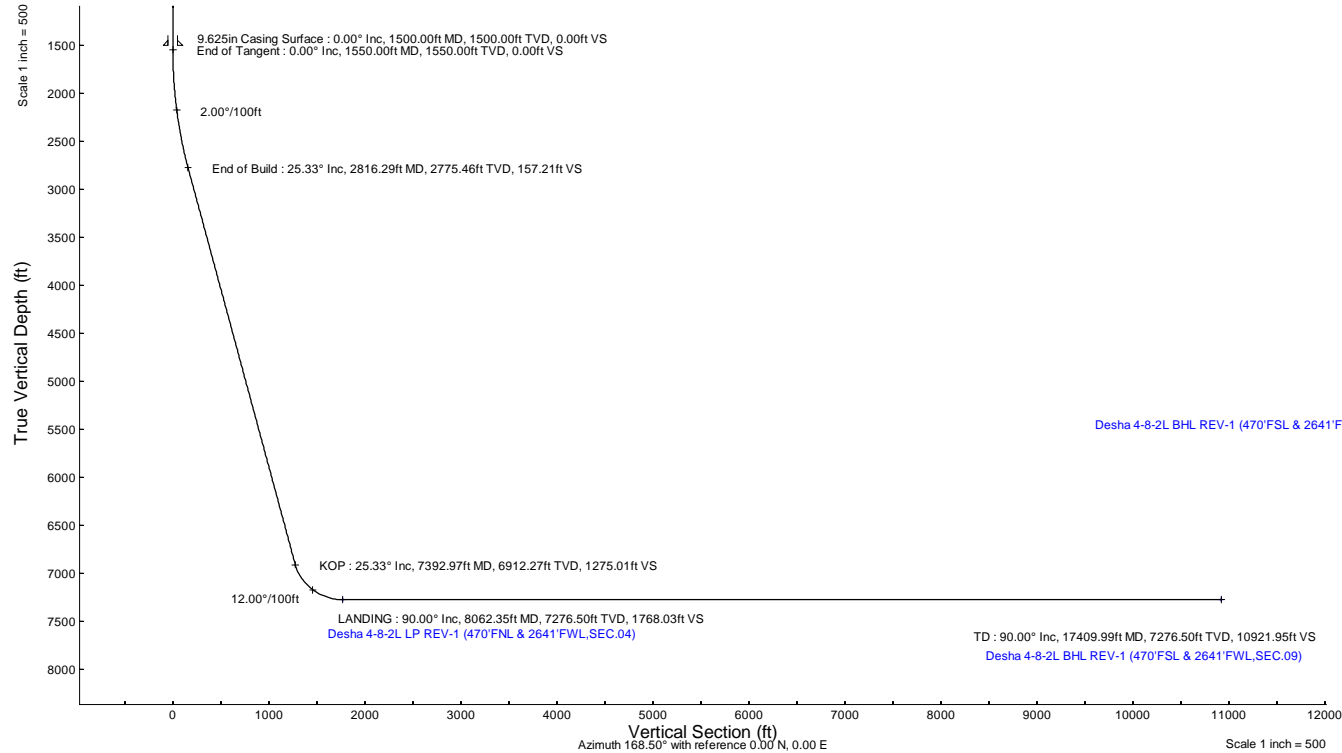
Location Information					
Facility Name		Grid East (US ft)	Grid North (US ft)	Latitude	Longitude
SEC.33-T01N-R65W		3230456.897	1245096.090	40°00'11.6640"N	104°40'38.4240"W
Slot		Local N (ft)	Local E (ft)	Grid East (US ft)	Grid North (US ft)
SLOT#21 Desha 4-8-2L (885'FSL & 450'FWL,SEC.33)		-98.36	148.48	3230606.278	1244999.118
Rig (20.5) (RT) to Mud line (At Slot: SLOT#21 Desha 4-8-2L (885'FSL & 450'FWL,SEC.33))				5098.5ft	
Mean Sea Level to Mud line (At Slot: SLOT#21 Desha 4-8-2L (885'FSL & 450'FWL,SEC.33))				0ft	
Rig (20.5) (RT) to Mean Sea Level				5098.5ft	

Survey Program					
Start MD (ft)	End MD (ft)	Tool		Model	Log Name/Comment
20.50	1500.00	BH NavTrak (2019)		BH NavTrak (2019) (Axial)	Desha 4-8-2L PWB
1500.00	17409.99	BH AutoTrak Curve/xpress (2019)		BH AutoTrak Curve/xpress (2019) (Short spacing)	Desha 4-8-2L PWB

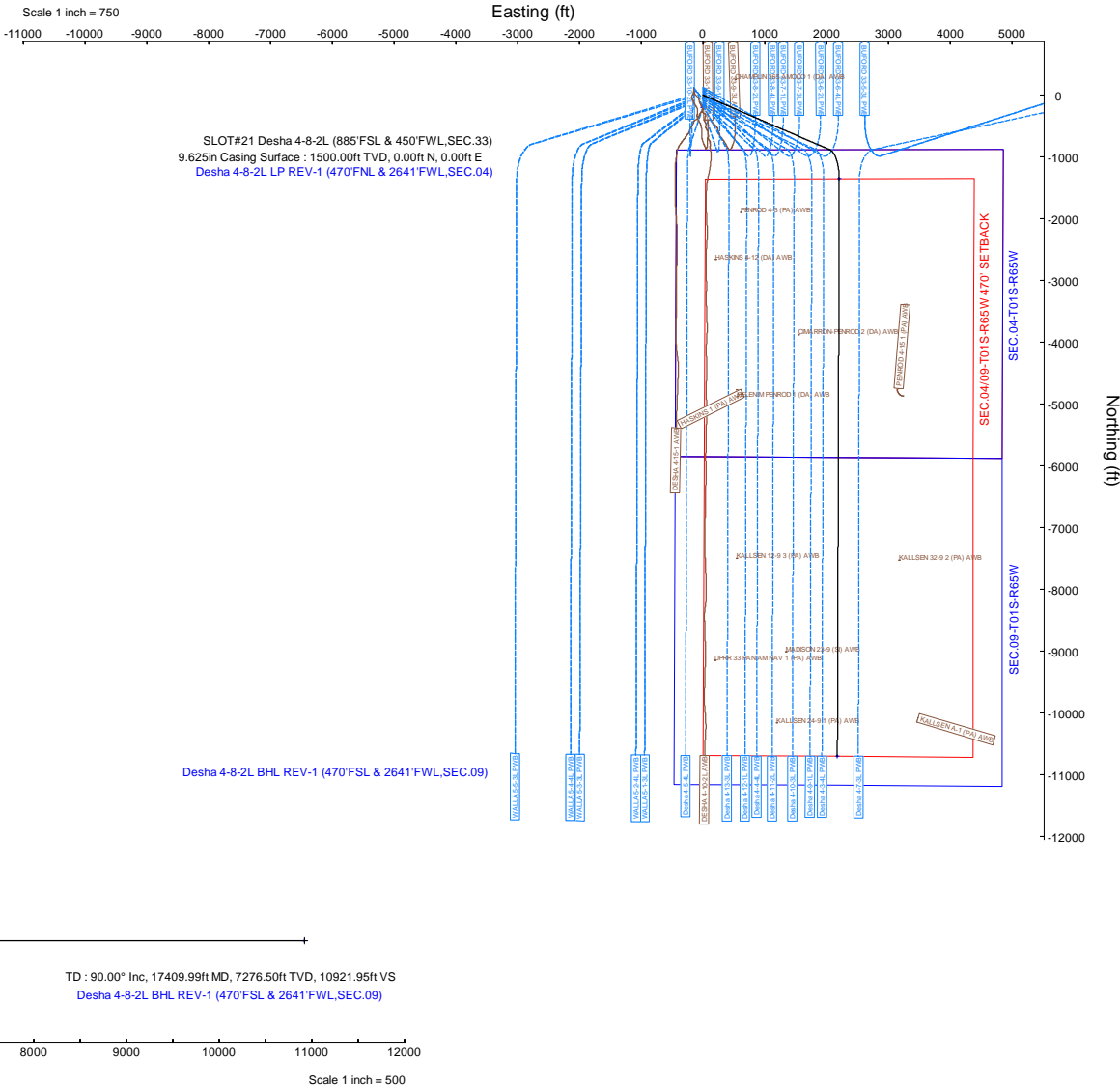
Hole and Casing Sections									
Name	Start MD (ft)	End MD (ft)	Interval (ft)	Start TVD (ft)	End TVD (ft)	Start Local N (ft)	Start Local E (ft)	End Local N (ft)	End Local E (ft)
9.625in Casing Surface	20.50	1500.00	1479.50	20.50	1500.00	0.00	0.00	0.00	0.00

Bottom Hole Location									
MD (ft)	Inc (°)	Az (°)	TVD (ft)	Local N (ft)	Local E (ft)	Grid East (US ft)	Grid North (US ft)	Latitude	Longitude
17409.99	90.000	180.184	7276.50	-10702.64	2177.71	3232883.17	1234317.54	39°58'24.9240"N	104°40'8.5440"W

Targets									
Name	MD (ft)	TVD (ft)	Local N (ft)	Local E (ft)	Grid East (US ft)	Grid North (US ft)	Latitude	Longitude	
SEC.04-T01S-R65W	N/A	0.00	-200.36	2.80	3230610.94	1244798.80	40°00'8.7120"N	104°40'36.4800"W	
SEC.0409-T01S-R65W 470' SETBACK	N/A	0.00	-200.36	2.80	3230610.94	1244798.80	40°00'8.7120"N	104°40'36.4800"W	
SEC.09-T01S-R65W	N/A	0.00	-200.36	2.80	3230610.94	1244798.80	40°00'8.7120"N	104°40'36.4800"W	
Desha 4-8-2L BHL REV-1 (470'FSL & 2641'FWL,SEC.09)	17409.99	7276.50	-10702.64	2177.71	3232883.17	1234317.54	39°58'24.9240"N	104°40'8.5440"W	
Desha 4-8-2L LP REV-1 (470'FSL & 2641'FWL,SEC.04)	8062.35	7276.50	-1365.05	2207.71	3232826.40	1243664.67	39°59'57.3000"N	104°40'8.1480"W	



Well Profile Data								
Design Comment	MD (ft)	Inc (°)	Az (°)	TVD (ft)	Local N (ft)	Local E (ft)	DLS (°/100ft)	VS (ft)
Tie On	20.50	0.000	113.316	20.50	0.00	0.00	0.00	0.00
End of Tangent	1550.00	0.000	113.316	1550.00	0.00	0.00	0.00	0.00
End of Build	2816.29	25.326	113.316	2775.46	-108.98	252.85	2.00	157.21
KOP	7392.97	25.326	113.316	6912.27	-883.87	2050.71	0.00	1275.01
LANDING	8062.35	90.000	180.184	7276.50	-1355.05	2207.71	12.00	1768.03
TD	17409.99	90.000	180.184	7276.50	-10702.64	2177.71	0.00	10921.95



# Planned Wellpath Report

Desha 4-8-2L PWP Rev-A.0

Page 1 of 7

## REFERENCE WELLPATH IDENTIFICATION

Operator	CONFLUENCE RESOURCES	Well	Desha 4-8-2L
Field	WELD COUNTY (NAD83, TRUE NORTH)	API/Legal	
Facility	SEC.33-T01N-R65W	Wellbore	Desha 4-8-2L PWB
Slot	SLOT#21 Desha 4-8-2L (885'FSL & 450'FWL,SEC.33)		

## REPORT SETUP INFORMATION

Projection System	NAD83 / Lambert Colorado SP, Northern Zone (501), US feet	Software System	WellArchitect® 6.0
North Reference	True	User	Painsetr
Scale	0.999966	Report Generated	10/7/2020 at 11:19:51 AM
Convergence at slot	0.53° East	Database	WA_Denver

## WELLPATH LOCATION

	Local coordinates		Grid coordinates		Geographic coordinates	
	North[ft]	East[ft]	Easting[US ft]	Northing[US ft]	Latitude	Longitude
Slot Location	-98.36	148.48	3230606.28	1244999.12	40.0029700°	-104.6768100°
Facility Reference Pt			3230456.90	1245096.09	40.0032400°	-104.6773400°
Field Reference Pt			3230456.90	1245096.09	40.0032400°	-104.6773400°

## WELLPATH DATUM

Calculation method	Minimum curvature	Rig (20.5') (RT) to Facility Vertical Datum	5098.50ft
Horizontal Reference Pt	Slot	Rig (20.5') (RT) to Mean Sea Level	5098.50ft
Vertical Reference Pt	Rig (20.5') (RT)	Rig (20.5') (RT) to Mud Line at Slot (SLOT#21 Desha 4-8-2L (885'FSL & 450'FWL,SEC.33))	5098.50ft
MD Reference Pt	Rig (20.5') (RT)	Section Origin	N 0.00, E 0.00 ft
Field Vertical Reference	Mean Sea Level	Section Azimuth	168.50°

# Planned Wellpath Report

Desha 4-8-2L PWP Rev-A.0

Page 2 of 7

## REFERENCE WELLPATH IDENTIFICATION

Operator	CONFLUENCE RESOURCES	Well	Desha 4-8-2L
Field	WELD COUNTY (NAD83, TRUE NORTH)	API/Legal	
Facility	SEC.33-T01N-R65W	Wellbore	Desha 4-8-2L PWB
Slot	SLOT#21 Desha 4-8-2L (885'FSL & 450'FWL,SEC.33)		

## WELLPATH DATA (180 stations) † = interpolated, ‡ = extrapolated station

MD [ft]	Inclination [°]	Azimuth [°]	TVD [ft]	Vert Sect [ft]	North [ft]	East [ft]	Grid East [US ft]	Grid North [US ft]	Latitude	Longitude	DLS [°/100ft]	Comments
0.00†	0.000	113.316	0.00	0.00	0.00	0.00	3230606.28	1244999.12	40.0029700	-104.6768100	0.00	
20.50	0.000	113.316	20.50	0.00	0.00	0.00	3230606.28	1244999.12	40.0029700	-104.6768100	0.00	Tie On
120.50†	0.000	113.316	120.50	0.00	0.00	0.00	3230606.28	1244999.12	40.0029700	-104.6768100	0.00	
220.50†	0.000	113.316	220.50	0.00	0.00	0.00	3230606.28	1244999.12	40.0029700	-104.6768100	0.00	
320.50†	0.000	113.316	320.50	0.00	0.00	0.00	3230606.28	1244999.12	40.0029700	-104.6768100	0.00	
420.50†	0.000	113.316	420.50	0.00	0.00	0.00	3230606.28	1244999.12	40.0029700	-104.6768100	0.00	
520.50†	0.000	113.316	520.50	0.00	0.00	0.00	3230606.28	1244999.12	40.0029700	-104.6768100	0.00	
620.50†	0.000	113.316	620.50	0.00	0.00	0.00	3230606.28	1244999.12	40.0029700	-104.6768100	0.00	
720.50†	0.000	113.316	720.50	0.00	0.00	0.00	3230606.28	1244999.12	40.0029700	-104.6768100	0.00	
820.50†	0.000	113.316	820.50	0.00	0.00	0.00	3230606.28	1244999.12	40.0029700	-104.6768100	0.00	
920.50†	0.000	113.316	920.50	0.00	0.00	0.00	3230606.28	1244999.12	40.0029700	-104.6768100	0.00	
1020.50†	0.000	113.316	1020.50	0.00	0.00	0.00	3230606.28	1244999.12	40.0029700	-104.6768100	0.00	
1120.50†	0.000	113.316	1120.50	0.00	0.00	0.00	3230606.28	1244999.12	40.0029700	-104.6768100	0.00	
1220.50†	0.000	113.316	1220.50	0.00	0.00	0.00	3230606.28	1244999.12	40.0029700	-104.6768100	0.00	
1320.50†	0.000	113.316	1320.50	0.00	0.00	0.00	3230606.28	1244999.12	40.0029700	-104.6768100	0.00	
1420.50†	0.000	113.316	1420.50	0.00	0.00	0.00	3230606.28	1244999.12	40.0029700	-104.6768100	0.00	
1520.50†	0.000	113.316	1520.50	0.00	0.00	0.00	3230606.28	1244999.12	40.0029700	-104.6768100	0.00	
1550.00	0.000	113.316	1550.00	0.00	0.00	0.00	3230606.28	1244999.12	40.0029700	-104.6768100	0.00	End of Tangent
1620.50†	1.410	113.316	1620.49	0.50	-0.34	0.80	3230607.08	1244998.78	40.0029691	-104.6768072	2.00	
1720.50†	3.410	113.316	1720.40	2.90	-2.01	4.66	3230610.95	1244997.15	40.0029645	-104.6767934	2.00	
1820.50†	5.410	113.316	1820.10	7.29	-5.05	11.72	3230618.04	1244994.18	40.0029561	-104.6767682	2.00	
1920.50†	7.410	113.316	1919.47	13.66	-9.47	21.97	3230628.34	1244989.85	40.0029440	-104.6767316	2.00	
2020.50†	9.410	113.316	2018.39	22.01	-15.26	35.40	3230641.82	1244984.19	40.0029281	-104.6766836	2.00	
2120.50†	11.410	113.316	2116.74	32.33	-22.41	51.99	3230658.48	1244977.19	40.0029085	-104.6766244	2.00	
2220.50†	13.410	113.316	2214.40	44.60	-30.92	71.73	3230678.29	1244968.87	40.0028851	-104.6765540	2.00	
2320.50†	15.410	113.316	2311.24	58.80	-40.76	94.58	3230701.23	1244959.23	40.0028581	-104.6764724	2.00	
2420.50†	17.410	113.316	2407.17	74.93	-51.95	120.52	3230727.27	1244948.29	40.0028274	-104.6763798	2.00	
2520.50†	19.410	113.316	2502.04	92.97	-64.45	149.52	3230756.39	1244936.07	40.0027931	-104.6762763	2.00	
2620.50†	21.410	113.316	2595.76	112.88	-78.25	181.55	3230788.54	1244922.56	40.0027552	-104.6761620	2.00	
2720.50†	23.410	113.316	2688.20	134.64	-93.34	216.56	3230823.68	1244907.80	40.0027138	-104.6760370	2.00	
2816.29	25.326	113.316	2775.46	157.21	-108.98	252.85	3230860.12	1244892.49	40.0026708	-104.6759075	2.00	End of Build
2820.50†	25.326	113.316	2779.26	158.23	-109.69	254.50	3230861.78	1244891.80	40.0026689	-104.6759016	0.00	
2920.50†	25.326	113.316	2869.65	182.66	-126.62	293.79	3230901.22	1244875.23	40.0026224	-104.6757613	0.00	
3020.50†	25.326	113.316	2960.04	207.08	-143.55	333.07	3230940.65	1244858.67	40.0025759	-104.6756211	0.00	
3120.50†	25.326	113.316	3050.43	231.51	-160.49	372.35	3230980.09	1244842.10	40.0025294	-104.6754809	0.00	
3220.50†	25.326	113.316	3140.82	255.93	-177.42	411.64	3231019.53	1244825.54	40.0024830	-104.6753407	0.00	
3320.50†	25.326	113.316	3231.21	280.35	-194.35	450.92	3231058.97	1244808.97	40.0024365	-104.6752005	0.00	
3420.50†	25.326	113.316	3321.60	304.78	-211.28	490.20	3231098.40	1244792.41	40.0023900	-104.6750602	0.00	
3520.50†	25.326	113.316	3411.98	329.20	-228.21	529.48	3231137.84	1244775.84	40.0023435	-104.6749200	0.00	
3620.50†	25.326	113.316	3502.37	353.63	-245.14	568.77	3231177.28	1244759.27	40.0022970	-104.6747798	0.00	
3720.50†	25.326	113.316	3592.76	378.05	-262.07	608.05	3231216.71	1244742.71	40.0022506	-104.6746396	0.00	
3820.50†	25.326	113.316	3683.15	402.47	-279.00	647.33	3231256.15	1244726.14	40.0022041	-104.6744994	0.00	
3920.50†	25.326	113.316	3773.54	426.90	-295.94	686.62	3231295.59	1244709.58	40.0021576	-104.6743591	0.00	
4020.50†	25.326	113.316	3863.93	451.32	-312.87	725.90	3231335.03	1244693.01	40.0021111	-104.6742189	0.00	
4120.50†	25.326	113.316	3954.32	475.75	-329.80	765.18	3231374.46	1244676.45	40.0020646	-104.6740787	0.00	

# Planned Wellpath Report

Desha 4-8-2L PWP Rev-A.0

Page 3 of 7

REFERENCE WELLPATH IDENTIFICATION			
Operator	CONFLUENCE RESOURCES	Well	Desha 4-8-2L
Field	WELD COUNTY (NAD83, TRUE NORTH)	API/Legal	
Facility	SEC.33-T01N-R65W	Wellbore	Desha 4-8-2L PWB
Slot	SLOT#21 Desha 4-8-2L (885'FSL & 450'FWL,SEC.33)		

## WELLPATH DATA (180 stations) † = interpolated, ‡ = extrapolated station

MD [ft]	Inclination [°]	Azimuth [°]	TVD [ft]	Vert Sect [ft]	North [ft]	East [ft]	Grid East [US ft]	Grid North [US ft]	Latitude	Longitude	DLS [°/100ft]	Comments
4220.50†	25.326	113.316	4044.71	500.17	-346.73	804.47	3231413.90	1244659.88	40.0020182	-104.6739385	0.00	
4320.50†	25.326	113.316	4135.10	524.59	-363.66	843.75	3231453.34	1244643.32	40.0019717	-104.6737983	0.00	
4420.50†	25.326	113.316	4225.49	549.02	-380.59	883.03	3231492.77	1244626.75	40.0019252	-104.6736581	0.00	
4520.50†	25.326	113.316	4315.87	573.44	-397.52	922.32	3231532.21	1244610.19	40.0018787	-104.6735178	0.00	
4620.50†	25.326	113.316	4406.26	597.86	-414.45	961.60	3231571.65	1244593.62	40.0018322	-104.6733776	0.00	
4720.50†	25.326	113.316	4496.65	622.29	-431.39	1000.88	3231611.09	1244577.06	40.0017858	-104.6732374	0.00	
4820.50†	25.326	113.316	4587.04	646.71	-448.32	1040.17	3231650.52	1244560.49	40.0017393	-104.6730972	0.00	
4920.50†	25.326	113.316	4677.43	671.14	-465.25	1079.45	3231689.96	1244543.93	40.0016928	-104.6729570	0.00	
5020.50†	25.326	113.316	4767.82	695.56	-482.18	1118.73	3231729.40	1244527.36	40.0016463	-104.6728168	0.00	
5120.50†	25.326	113.316	4858.21	719.98	-499.11	1158.02	3231768.84	1244510.80	40.0015998	-104.6726766	0.00	
5220.50†	25.326	113.316	4948.60	744.41	-516.04	1197.30	3231808.27	1244494.23	40.0015533	-104.6725363	0.00	
5320.50†	25.326	113.316	5038.99	768.83	-532.97	1236.58	3231847.71	1244477.67	40.0015069	-104.6723961	0.00	
5420.50†	25.326	113.316	5129.38	793.26	-549.90	1275.86	3231887.15	1244461.10	40.0014604	-104.6722559	0.00	
5520.50†	25.326	113.316	5219.76	817.68	-566.84	1315.15	3231926.58	1244444.53	40.0014139	-104.6721157	0.00	
5620.50†	25.326	113.316	5310.15	842.10	-583.77	1354.43	3231966.02	1244427.97	40.0013674	-104.6719755	0.00	
5720.50†	25.326	113.316	5400.54	866.53	-600.70	1393.71	3232005.46	1244411.40	40.0013209	-104.6718353	0.00	
5820.50†	25.326	113.316	5490.93	890.95	-617.63	1433.00	3232044.90	1244394.84	40.0012744	-104.6716950	0.00	
5920.50†	25.326	113.316	5581.32	915.38	-634.56	1472.28	3232084.33	1244378.27	40.0012280	-104.6715548	0.00	
6020.50†	25.326	113.316	5671.71	939.80	-651.49	1511.56	3232123.77	1244361.71	40.0011815	-104.6714146	0.00	
6120.50†	25.326	113.316	5762.10	964.22	-668.42	1550.85	3232163.21	1244345.14	40.0011350	-104.6712744	0.00	
6220.50†	25.326	113.316	5852.49	988.65	-685.35	1590.13	3232202.64	1244328.58	40.0010885	-104.6711342	0.00	
6320.50†	25.326	113.316	5942.88	1013.07	-702.29	1629.41	3232242.08	1244312.01	40.0010420	-104.6709940	0.00	
6420.50†	25.326	113.316	6033.26	1037.49	-719.22	1668.70	3232281.52	1244295.45	40.0009955	-104.6708538	0.00	
6520.50†	25.326	113.316	6123.65	1061.92	-736.15	1707.98	3232320.96	1244278.88	40.0009490	-104.6707136	0.00	
6620.50†	25.326	113.316	6214.04	1086.34	-753.08	1747.26	3232360.39	1244262.32	40.0009026	-104.6705733	0.00	
6720.50†	25.326	113.316	6304.43	1110.77	-770.01	1786.55	3232399.83	1244245.75	40.0008561	-104.6704331	0.00	
6820.50†	25.326	113.316	6394.82	1135.19	-786.94	1825.83	3232439.27	1244229.19	40.0008096	-104.6702929	0.00	
6920.50†	25.326	113.316	6485.21	1159.61	-803.87	1865.11	3232478.70	1244212.62	40.0007631	-104.6701527	0.00	
7020.50†	25.326	113.316	6575.60	1184.04	-820.80	1904.39	3232518.14	1244196.06	40.0007166	-104.6700125	0.00	
7120.50†	25.326	113.316	6665.99	1208.46	-837.74	1943.68	3232557.58	1244179.49	40.0006701	-104.6698723	0.00	
7220.50†	25.326	113.316	6756.38	1232.89	-854.67	1982.96	3232597.02	1244162.93	40.0006236	-104.6697321	0.00	
7320.50†	25.326	113.316	6846.77	1257.31	-871.60	2022.24	3232636.45	1244146.36	40.0005772	-104.6695919	0.00	
7392.97	25.326	113.316	6912.27	1275.01	-883.87	2050.71	3232665.03	1244134.36	40.0005435	-104.6694902	0.00	KOP
7420.50†	26.683	120.192	6937.02	1282.49	-889.31	2061.47	3232675.84	1244129.01	40.0005285	-104.6694519	12.00	
7520.50†	33.781	139.600	7023.57	1321.90	-921.89	2099.03	3232713.70	1244096.78	40.0004391	-104.6693178	12.00	
7620.50†	42.903	152.261	7102.04	1379.13	-973.38	2133.01	3232748.16	1244045.62	40.0002977	-104.6691965	12.00	
7720.50†	52.999	161.039	7169.00	1451.67	-1041.52	2161.94	3232777.71	1243977.75	40.0001107	-104.6690933	12.00	
7820.50†	63.587	167.700	7221.53	1536.35	-1123.33	2184.53	3232801.07	1243896.15	39.9998861	-104.6690127	12.00	
7920.50†	74.430	173.219	7257.32	1629.47	-1215.25	2199.82	3232817.20	1243804.38	39.9996338	-104.6689581	12.00	
8020.50†	85.396	178.176	7274.82	1726.96	-1313.25	2207.12	3232825.41	1243706.46	39.9993647	-104.6689321	12.00	
8062.35	90.000	180.184	7276.50†	1768.03	-1355.05	2207.71	3232826.40	1243664.67	39.9992500	-104.6689300	12.00	LANDING
8120.50†	90.000	180.184	7276.50	1824.98	-1413.20	2207.53	3232826.75	1243606.52	39.9990904	-104.6689307	0.00	
8220.50†	90.000	180.184	7276.50	1922.91	-1513.20	2207.21	3232827.36	1243506.53	39.9988159	-104.6689319	0.00	
8320.50†	90.000	180.184	7276.50	2020.83	-1613.20	2206.89	3232827.96	1243406.53	39.9985414	-104.6689330	0.00	
8420.50†	90.000	180.184	7276.50	2118.76	-1713.20	2206.56	3232828.57	1243306.54	39.9982669	-104.6689342	0.00	

# Planned Wellpath Report

Desha 4-8-2L PWP Rev-A.0

Page 4 of 7

## REFERENCE WELLPATH IDENTIFICATION

Operator	CONFLUENCE RESOURCES	Well	Desha 4-8-2L
Field	WELD COUNTY (NAD83, TRUE NORTH)	API/Legal	
Facility	SEC.33-T01N-R65W	Wellbore	Desha 4-8-2L PWB
Slot	SLOT#21 Desha 4-8-2L (885'FSL & 450'FWL,SEC.33)		

## WELLPATH DATA (180 stations) † = interpolated, ‡ = extrapolated station

MD [ft]	Inclination [°]	Azimuth [°]	TVD [ft]	Vert Sect [ft]	North [ft]	East [ft]	Grid East [US ft]	Grid North [US ft]	Latitude	Longitude	DLS [°/100ft]	Comments
8520.50†	90.000	180.184	7276.50	2216.69	-1813.20	2206.24	3232829.18	1243206.54	39.9979923	-104.6689354	0.00	
8620.50†	90.000	180.184	7276.50	2314.62	-1913.20	2205.92	3232829.79	1243106.55	39.9977178	-104.6689366	0.00	
8720.50†	90.000	180.184	7276.50	2412.54	-2013.20	2205.60	3232830.39	1243006.55	39.9974433	-104.6689377	0.00	
8820.50†	90.000	180.184	7276.50	2510.47	-2113.20	2205.28	3232831.00	1242906.56	39.9971688	-104.6689389	0.00	
8920.50†	90.000	180.184	7276.50	2608.40	-2213.20	2204.96	3232831.61	1242806.57	39.9968943	-104.6689401	0.00	
9020.50†	90.000	180.184	7276.50	2706.33	-2313.20	2204.64	3232832.22	1242706.57	39.9966198	-104.6689413	0.00	
9120.50†	90.000	180.184	7276.50	2804.25	-2413.19	2204.32	3232832.82	1242606.58	39.9963453	-104.6689425	0.00	
9220.50†	90.000	180.184	7276.50	2902.18	-2513.19	2204.00	3232833.43	1242506.58	39.9960708	-104.6689436	0.00	
9320.50†	90.000	180.184	7276.50	3000.11	-2613.19	2203.68	3232834.04	1242406.59	39.9957963	-104.6689448	0.00	
9420.50†	90.000	180.184	7276.50	3098.04	-2713.19	2203.36	3232834.65	1242306.59	39.9955218	-104.6689460	0.00	
9520.50†	90.000	180.184	7276.50	3195.97	-2813.19	2203.03	3232835.25	1242206.60	39.9952473	-104.6689472	0.00	
9620.50†	90.000	180.184	7276.50	3293.89	-2913.19	2202.71	3232835.86	1242106.60	39.9949728	-104.6689483	0.00	
9720.50†	90.000	180.184	7276.50	3391.82	-3013.19	2202.39	3232836.47	1242006.61	39.9946983	-104.6689495	0.00	
9820.50†	90.000	180.184	7276.50	3489.75	-3113.19	2202.07	3232837.07	1241906.61	39.9944237	-104.6689507	0.00	
9920.50†	90.000	180.184	7276.50	3587.68	-3213.19	2201.75	3232837.68	1241806.62	39.9941492	-104.6689519	0.00	
10020.50†	90.000	180.184	7276.50	3685.60	-3313.19	2201.43	3232838.29	1241706.62	39.9938747	-104.6689530	0.00	
10120.50†	90.000	180.184	7276.50	3783.53	-3413.19	2201.11	3232838.90	1241606.63	39.9936002	-104.6689542	0.00	
10220.50†	90.000	180.184	7276.50	3881.46	-3513.19	2200.79	3232839.50	1241506.64	39.9933257	-104.6689554	0.00	
10320.50†	90.000	180.184	7276.50	3979.39	-3613.19	2200.47	3232840.11	1241406.64	39.9930512	-104.6689566	0.00	
10420.50†	90.000	180.184	7276.50	4077.31	-3713.19	2200.15	3232840.72	1241306.65	39.9927767	-104.6689578	0.00	
10520.50†	90.000	180.184	7276.50	4175.24	-3813.19	2199.82	3232841.33	1241206.65	39.9925022	-104.6689589	0.00	
10620.50†	90.000	180.184	7276.50	4273.17	-3913.19	2199.50	3232841.93	1241106.66	39.9922277	-104.6689601	0.00	
10720.50†	90.000	180.184	7276.50	4371.10	-4013.19	2199.18	3232842.54	1241006.66	39.9919532	-104.6689613	0.00	
10820.50†	90.000	180.184	7276.50	4469.02	-4113.19	2198.86	3232843.15	1240906.67	39.9916787	-104.6689625	0.00	
10920.50†	90.000	180.184	7276.50	4566.95	-4213.19	2198.54	3232843.76	1240806.67	39.9914042	-104.6689636	0.00	
11020.50†	90.000	180.184	7276.50	4664.88	-4313.18	2198.22	3232844.36	1240706.68	39.9911297	-104.6689648	0.00	
11120.50†	90.000	180.184	7276.50	4762.81	-4413.18	2197.90	3232844.97	1240606.68	39.9908551	-104.6689660	0.00	
11220.50†	90.000	180.184	7276.50	4860.73	-4513.18	2197.58	3232845.58	1240506.69	39.9905806	-104.6689672	0.00	
11320.50†	90.000	180.184	7276.50	4958.66	-4613.18	2197.26	3232846.19	1240406.70	39.9903061	-104.6689684	0.00	
11420.50†	90.000	180.184	7276.50	5056.59	-4713.18	2196.94	3232846.79	1240306.70	39.9900316	-104.6689695	0.00	
11520.50†	90.000	180.184	7276.50	5154.52	-4813.18	2196.62	3232847.40	1240206.71	39.9897571	-104.6689707	0.00	
11620.50†	90.000	180.184	7276.50	5252.44	-4913.18	2196.29	3232848.01	1240106.71	39.9894826	-104.6689719	0.00	
11720.50†	90.000	180.184	7276.50	5350.37	-5013.18	2195.97	3232848.61	1240006.72	39.9892081	-104.6689731	0.00	
11820.50†	90.000	180.184	7276.50	5448.30	-5113.18	2195.65	3232849.22	1239906.72	39.9889336	-104.6689742	0.00	
11920.50†	90.000	180.184	7276.50	5546.23	-5213.18	2195.33	3232849.83	1239806.73	39.9886591	-104.6689754	0.00	
12020.50†	90.000	180.184	7276.50	5644.15	-5313.18	2195.01	3232850.44	1239706.73	39.9883846	-104.6689766	0.00	
12120.50†	90.000	180.184	7276.50	5742.08	-5413.18	2194.69	3232851.04	1239606.74	39.9881101	-104.6689778	0.00	
12220.50†	90.000	180.184	7276.50	5840.01	-5513.18	2194.37	3232851.65	1239506.74	39.9878356	-104.6689789	0.00	
12320.50†	90.000	180.184	7276.50	5937.94	-5613.18	2194.05	3232852.26	1239406.75	39.9875611	-104.6689801	0.00	
12420.50†	90.000	180.184	7276.50	6035.86	-5713.18	2193.73	3232852.87	1239306.76	39.9872865	-104.6689813	0.00	
12520.50†	90.000	180.184	7276.50	6133.79	-5813.18	2193.41	3232853.47	1239206.76	39.9870120	-104.6689825	0.00	
12620.50†	90.000	180.184	7276.50	6231.72	-5913.18	2193.09	3232854.08	1239106.77	39.9867375	-104.6689836	0.00	
12720.50†	90.000	180.184	7276.50	6329.65	-6013.18	2192.76	3232854.69	1239006.77	39.9864630	-104.6689848	0.00	
12820.50†	90.000	180.184	7276.50	6427.57	-6113.18	2192.44	3232855.30	1238906.78	39.9861885	-104.6689860	0.00	
12920.50†	90.000	180.184	7276.50	6525.50	-6213.17	2192.12	3232855.90	1238806.78	39.9859140	-104.6689872	0.00	



# Planned Wellpath Report

Desha 4-8-2L PWP Rev-A.0

Page 5 of 7

## REFERENCE WELLPATH IDENTIFICATION

Operator	CONFLUENCE RESOURCES	Well	Desha 4-8-2L
Field	WELD COUNTY (NAD83, TRUE NORTH)	API/Legal	
Facility	SEC.33-T01N-R65W	Wellbore	Desha 4-8-2L PWB
Slot	SLOT#21 Desha 4-8-2L (885'FSL & 450'FWL,SEC.33)		

## WELLPATH DATA (180 stations) † = interpolated, ‡ = extrapolated station

MD [ft]	Inclination [°]	Azimuth [°]	TVD [ft]	Vert Sect [ft]	North [ft]	East [ft]	Grid East [US ft]	Grid North [US ft]	Latitude	Longitude	DLS [°/100ft]	Comments
13020.50†	90.000	180.184	7276.50	6623.43	-6313.17	2191.80	3232856.51	1238706.79	39.9856395	-104.6689884	0.00	
13120.50†	90.000	180.184	7276.50	6721.36	-6413.17	2191.48	3232857.12	1238606.79	39.9853650	-104.6689895	0.00	
13220.50†	90.000	180.184	7276.50	6819.28	-6513.17	2191.16	3232857.73	1238506.80	39.9850905	-104.6689907	0.00	
13320.50†	90.000	180.184	7276.50	6917.21	-6613.17	2190.84	3232858.33	1238406.80	39.9848160	-104.6689919	0.00	
13420.50†	90.000	180.184	7276.50	7015.14	-6713.17	2190.52	3232858.94	1238306.81	39.9845415	-104.6689931	0.00	
13520.50†	90.000	180.184	7276.50	7113.07	-6813.17	2190.20	3232859.55	1238206.81	39.9842670	-104.6689942	0.00	
13620.50†	90.000	180.184	7276.50	7210.99	-6913.17	2189.88	3232860.15	1238106.82	39.9839925	-104.6689954	0.00	
13720.50†	90.000	180.184	7276.50	7308.92	-7013.17	2189.56	3232860.76	1238006.83	39.9837179	-104.6689966	0.00	
13820.50†	90.000	180.184	7276.50	7406.85	-7113.17	2189.23	3232861.37	1237906.83	39.9834434	-104.6689978	0.00	
13920.50†	90.000	180.184	7276.50	7504.78	-7213.17	2188.91	3232861.98	1237806.84	39.9831689	-104.6689989	0.00	
14020.50†	90.000	180.184	7276.50	7602.70	-7313.17	2188.59	3232862.58	1237706.84	39.9828944	-104.6690001	0.00	
14120.50†	90.000	180.184	7276.50	7700.63	-7413.17	2188.27	3232863.19	1237606.85	39.9826199	-104.6690013	0.00	
14220.50†	90.000	180.184	7276.50	7798.56	-7513.17	2187.95	3232863.80	1237506.85	39.9823454	-104.6690025	0.00	
14320.50†	90.000	180.184	7276.50	7896.49	-7613.17	2187.63	3232864.41	1237406.86	39.9820709	-104.6690037	0.00	
14420.50†	90.000	180.184	7276.50	7994.42	-7713.17	2187.31	3232865.01	1237306.86	39.9817964	-104.6690048	0.00	
14520.50†	90.000	180.184	7276.50	8092.34	-7813.17	2186.99	3232865.62	1237206.87	39.9815219	-104.6690060	0.00	
14620.50†	90.000	180.184	7276.50	8190.27	-7913.17	2186.67	3232866.23	1237106.87	39.9812474	-104.6690072	0.00	
14720.50†	90.000	180.184	7276.50	8288.20	-8013.17	2186.35	3232866.84	1237006.88	39.9809729	-104.6690084	0.00	
14820.50†	90.000	180.184	7276.50	8386.13	-8113.17	2186.02	3232867.44	1236906.89	39.9806984	-104.6690095	0.00	
14920.50†	90.000	180.184	7276.50	8484.05	-8213.16	2185.70	3232868.05	1236806.89	39.9804239	-104.6690107	0.00	
15020.50†	90.000	180.184	7276.50	8581.98	-8313.16	2185.38	3232868.66	1236706.90	39.9801493	-104.6690119	0.00	
15120.50†	90.000	180.184	7276.50	8679.91	-8413.16	2185.06	3232869.27	1236606.90	39.9798748	-104.6690131	0.00	
15220.50†	90.000	180.184	7276.50	8777.84	-8513.16	2184.74	3232869.87	1236506.91	39.9796003	-104.6690142	0.00	
15320.50†	90.000	180.184	7276.50	8875.76	-8613.16	2184.42	3232870.48	1236406.91	39.9793258	-104.6690154	0.00	
15420.50†	90.000	180.184	7276.50	8973.69	-8713.16	2184.10	3232871.09	1236306.92	39.9790513	-104.6690166	0.00	
15520.50†	90.000	180.184	7276.50	9071.62	-8813.16	2183.78	3232871.69	1236206.92	39.9787768	-104.6690178	0.00	
15620.50†	90.000	180.184	7276.50	9169.55	-8913.16	2183.46	3232872.30	1236106.93	39.9785023	-104.6690189	0.00	
15720.50†	90.000	180.184	7276.50	9267.47	-9013.16	2183.14	3232872.91	1236006.93	39.9782278	-104.6690201	0.00	
15820.50†	90.000	180.184	7276.50	9365.40	-9113.16	2182.82	3232873.52	1235906.94	39.9779533	-104.6690213	0.00	
15920.50†	90.000	180.184	7276.50	9463.33	-9213.16	2182.49	3232874.12	1235806.95	39.9776788	-104.6690225	0.00	
16020.50†	90.000	180.184	7276.50	9561.26	-9313.16	2182.17	3232874.73	1235706.95	39.9774043	-104.6690237	0.00	
16120.50†	90.000	180.184	7276.50	9659.18	-9413.16	2181.85	3232875.34	1235606.96	39.9771298	-104.6690248	0.00	
16220.50†	90.000	180.184	7276.50	9757.11	-9513.16	2181.53	3232875.95	1235506.96	39.9768552	-104.6690260	0.00	
16320.50†	90.000	180.184	7276.50	9855.04	-9613.16	2181.21	3232876.55	1235406.97	39.9765807	-104.6690272	0.00	
16420.50†	90.000	180.184	7276.50	9952.97	-9713.16	2180.89	3232877.16	1235306.97	39.9763062	-104.6690284	0.00	
16520.50†	90.000	180.184	7276.50	10050.89	-9813.16	2180.57	3232877.77	1235206.98	39.9760317	-104.6690295	0.00	
16620.50†	90.000	180.184	7276.50	10148.82	-9913.16	2180.25	3232878.38	1235106.98	39.9757572	-104.6690307	0.00	
16720.50†	90.000	180.184	7276.50	10246.75	-10013.16	2179.93	3232878.98	1235006.99	39.9754827	-104.6690319	0.00	
16820.50†	90.000	180.184	7276.50	10344.68	-10113.15	2179.61	3232879.59	1234906.99	39.9752082	-104.6690331	0.00	
16920.50†	90.000	180.184	7276.50	10442.60	-10213.15	2179.29	3232880.20	1234807.00	39.9749337	-104.6690342	0.00	
17020.50†	90.000	180.184	7276.50	10540.53	-10313.15	2178.96	3232880.81	1234707.00	39.9746592	-104.6690354	0.00	
17120.50†	90.000	180.184	7276.50	10638.46	-10413.15	2178.64	3232881.41	1234607.01	39.9743847	-104.6690366	0.00	
17220.50†	90.000	180.184	7276.50	10736.39	-10513.15	2178.32	3232882.02	1234507.02	39.9741102	-104.6690378	0.00	
17320.50†	90.000	180.184	7276.50	10834.31	-10613.15	2178.00	3232882.63	1234407.02	39.9738357	-104.6690389	0.00	
17409.99	90.000	180.184	7276.50 <sup>2</sup>	10921.95	-10702.64	2177.71	3232883.17	1234317.54	39.9735900	-104.6690400	0.00	TD

## REFERENCE WELLPATH IDENTIFICATION

Operator	CONFLUENCE RESOURCES	Well	Desha 4-8-2L
Field	WELD COUNTY (NAD83, TRUE NORTH)	API/Legal	
Facility	SEC.33-T01N-R65W	Wellbore	Desha 4-8-2L PWB
Slot	SLOT#21 Desha 4-8-2L (885'FSL & 450'FWL,SEC.33)		

## HOLE & CASING SECTIONS - Ref Wellbore: Desha 4-8-2L PWB Ref Wellpath: Desha 4-8-2L PWP Rev-A.0

String/Diameter	Start MD [ft]	End MD [ft]	Interval [ft]	Start TVD [ft]	End TVD [ft]	Start N/S [ft]	Start E/W [ft]	End N/S [ft]	End E/W [ft]
9.625in Casing Surface	20.50	1500.00	1479.50	20.50	1500.00	0.00	0.00	0.00	0.00

## TARGETS

Name	MD [ft]	TVD [ft]	North [ft]	East [ft]	Grid East [US ft]	Grid North [US ft]	Latitude	Longitude	Shape
SEC.04-T01S-R65W	N/A	0.00	-200.36	2.80	3230610.94	1244798.80	40.0024200	-104.6768000	polygon
2D Polygon: dimensions not calculated									
SEC.04/09-T01S-R65W 470' SETBACK	N/A	0.00	-200.36	2.80	3230610.94	1244798.80	40.0024200	-104.6768000	polygon
2D Polygon: dimensions not calculated									
SEC.09-T01S-R65W	N/A	0.00	-200.36	2.80	3230610.94	1244798.80	40.0024200	-104.6768000	polygon
2D Polygon: dimensions not calculated									
2) Desha 4-8-2L BHL REV-1 (470'FSL & 2641'FWL,SEC.09)	17409.99	7276.50	-10702.64	2177.71	3232883.17	1234317.54	39.9735900	-104.6690400	point
1) Desha 4-8-2L LP REV-1 (470'FNL & 2641'FWL,SEC.04)	8062.35	7276.50	-1355.05	2207.71	3232826.40	1243664.67	39.9992500	-104.6689300	point

## SURVEY PROGRAM - Ref Wellbore: Desha 4-8-2L PWB Ref Wellpath: Desha 4-8-2L PWP Rev-A.0

Start MD [ft]	End MD [ft]	Positional Uncertainty Model	Log Name/Comment	Wellbore
20.50	1500.00	BH NaviTrak (2019) (Axial)		Desha 4-8-2L PWB
1500.00	17409.99	BH AutoTrak Curve/eXpress (2019) (Short spacing)		Desha 4-8-2L PWB

# Planned Wellpath Report

Desha 4-8-2L PWP Rev-A.0

Page 7 of 7

## REFERENCE WELLPATH IDENTIFICATION

Operator	CONFLUENCE RESOURCES	Well	Desha 4-8-2L
Field	WELD COUNTY (NAD83, TRUE NORTH)	API/Legal	
Facility	SEC.33-T01N-R65W	Wellbore	Desha 4-8-2L PWB
Slot	SLOT#21 Desha 4-8-2L (885'FSL & 450'FWL,SEC.33)		

## DESIGN COMMENTS

MD [ft]	Inclination [°]	Azimuth [°]	TVD [ft]	Comment
20.50	0.000	113.316	20.50	Tie On
1550.00	0.000	113.316	1550.00	End of Tangent
2816.29	25.326	113.316	2775.46	End of Build
7392.97	25.326	113.316	6912.27	KOP
8062.35	90.000	180.184	7276.50	LANDING
17409.99	90.000	180.184	7276.50	TD