

CONFLUENCE RESOURCES

Location:	COLORADO	Slot:	SLOT#16 Desha 4-4-4L (760'FSL & 450'FWL,SEC.33)
Field:	WELD COUNTY (NAD83, TRUE NORTH)	Well:	Desha 4-4-4L
Facility:	SEC.33-T01N-R65W	Wellbore:	Desha 4-4-4L PWB
Plot reference wellpath is Desha 4-4-4L PWP RevA.0		Grid System: NAD83 / Lambert Colorado SP, Northern Zone (501), US feet	
True vertical depths are referenced to Rig (20.5) (RT)		North Reference: True north	
Reference wellpath measured depths are referenced to Rig (20.5) (RT)		Scale: True distance	
Rig (20.5) to Mean Sea Level: 5098.5 feet		Coordinates are in feet referenced to Slot	
Mean Sea Level to Mud line (At Slot: SLOT#16 Desha 4-4-4L (760'FSL & 450'FWL,SEC.33)): 0 feet		Depths are in feet	
Offset wellpath MDs are referenced to each path's default MD datum		Created by: painsetr on 2020-10-07, Database: WA_Denver	

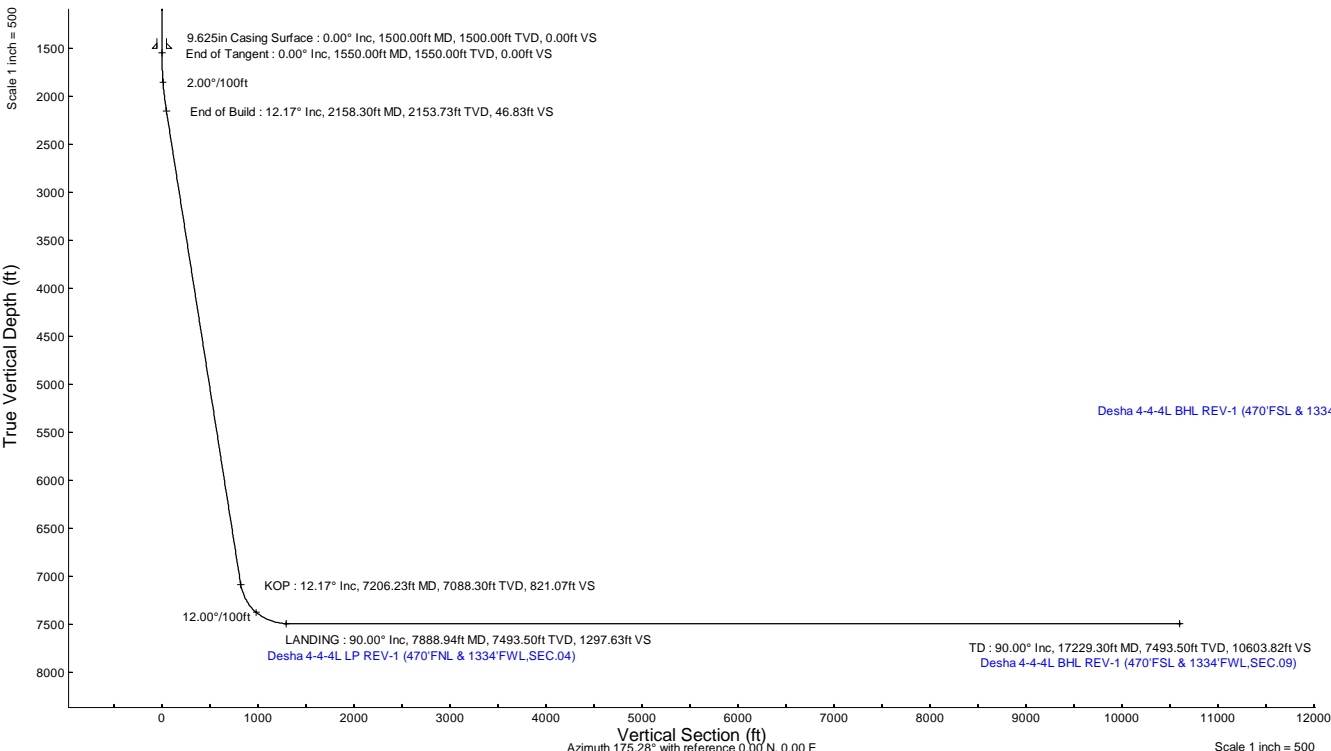
Location Information				
Facility Name		Grid East (US ft)	Grid North (US ft)	Latitude
SEC.33-T01N-R65W		3230456.897	1245096.090	40°00'11.6640"N
Slot		Local N (ft)	Local E (ft)	Longitude
SLOT#16 Desha 4-4-4L (760'FSL & 450'FWL,SEC.33)		-225.86	148.48	104°40'36.5160"W
Rig (20.5) (RT) to Mud line (At Slot: SLOT#16 Desha 4-4-4L (760'FSL & 450'FWL,SEC.33))		Grid East (US ft)	Grid North (US ft)	Latitude
Mean Sea Level to Mud line (At Slot: SLOT#16 Desha 4-4-4L (760'FSL & 450'FWL,SEC.33))		3230607.462	1244871.627	40°00'9.4320"N
Rig (20.5) (RT) to Mean Sea Level		5098.5ft		

Survey Program				
Start MD (ft)	End MD (ft)	Tool	Model	Log Name/Comment
20.50	1500.00	BH NavTrak (2019)	BH NavTrak (2019) (Axial)	
1500.00	17229.30	BH AutoTrak Curve/xpress (2019)	BH AutoTrak Curve/xpress (2019) (Short spacing)	

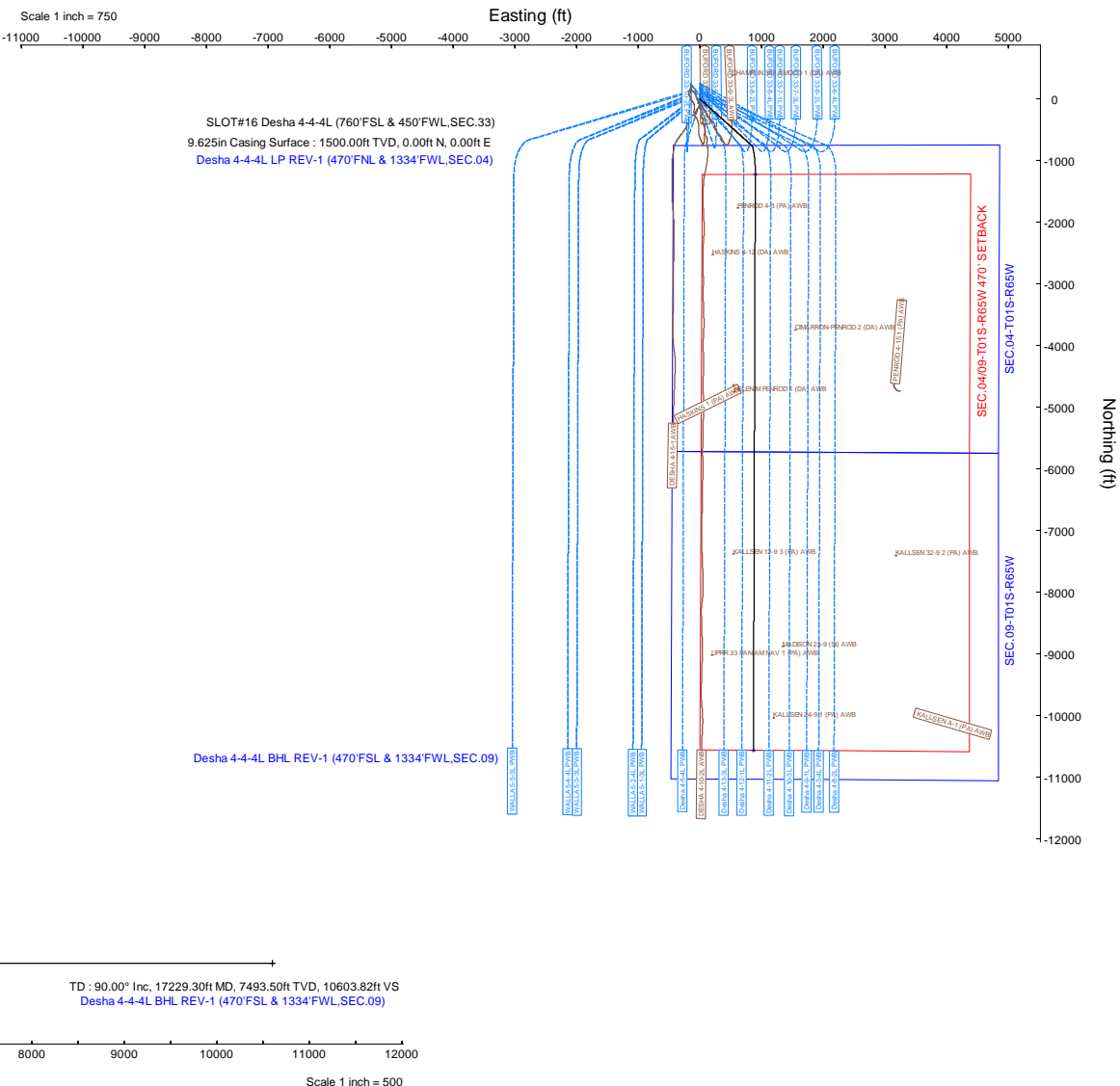
Hole and Casing Sections				
Name	Start MD (ft)	End MD (ft)	Interval (ft)	Wellbore
9.625in Casing Surface	20.50	1500.00	1479.50	Desha 4-4-4L PWB

Bottom Hole Location				
MD (ft)	Inc (")	Az (°)	TVD (ft)	Local N (ft)
17229.30	90.000	180.187	7493.50	-10567.94

Targets				
Name	MD (ft)	TVD (ft)	Local N (ft)	Local E (ft)
SEC.04-T01S-R65W	N/A	0.00	-72.86	2.80
SEC.0409-T01S-R65W 470' SETBACK	N/A	0.00	-72.86	2.80
SEC.09-T01S-R65W	N/A	0.00	-72.86	2.80
Desha 4-4-4L BHL REV-1 (470'FSL & 1334'FWL,SEC.09)	17229.30	7493.50	-10567.94	871.65
Desha 4-4-4L LP REV-1 (470'FNL & 1334'FWL,SEC.04)	7888.94	7493.50	-1227.63	902.14



Well Profile Data								
Design Comment	MD (ft)	Inc (")	Az (°)	TVD (ft)	Local N (ft)	Local E (ft)	DLS (°/100ft)	VS (ft)
Tie On	20.50	0.000	131.987	20.50	0.00	0.00	0.00	0.00
End of Tangent	1550.00	0.000	131.987	1550.00	0.00	0.00	0.00	0.00
End of Build	2158.30	12.166	131.987	2153.73	-43.04	47.82	2.00	46.83
KOP	7206.23	12.166	131.987	7088.30	-754.69	838.56	0.00	821.07
LANDING	7888.94	90.000	180.187	7493.50	-1227.63	902.14	12.00	1297.63
TD	17229.30	90.000	180.187	7493.50	-10567.94	871.65	0.00	10603.82





Planned Wellpath Report

Desha 4-4-4L PWP Rev-A.0

Page 1 of 7



REFERENCE WELLPATH IDENTIFICATION

Operator	CONFLUENCE RESOURCES	Well	Desha 4-4-4L
Field	WELD COUNTY (NAD83, TRUE NORTH)	API/Legal	
Facility	SEC.33-T01N-R65W	Wellbore	Desha 4-4-4L PWB
Slot	SLOT#16 Desha 4-4-4L (760'FSL & 450'FWL,SEC.33)		

REPORT SETUP INFORMATION

Projection System	NAD83 / Lambert Colorado SP, Northern Zone (501), US feet	Software System	WellArchitect® 6.0
North Reference	True	User	Painsetr
Scale	0.999966	Report Generated	10/7/2020 at 10:50:41 AM
Convergence at slot	0.53° East	Database	WA_Denver

WELLPATH LOCATION

	Local coordinates		Grid coordinates		Geographic coordinates	
	North[ft]	East[ft]	Easting[US ft]	Northing[US ft]	Latitude	Longitude
Slot Location	-225.86	148.48	3230607.46	1244871.63	40.0026200°	-104.6768100°
Facility Reference Pt			3230456.90	1245096.09	40.0032400°	-104.6773400°
Field Reference Pt			3230456.90	1245096.09	40.0032400°	-104.6773400°

WELLPATH DATUM

Calculation method	Minimum curvature	Rig (20.5') (RT) to Facility Vertical Datum	5098.50ft
Horizontal Reference Pt	Slot	Rig (20.5') (RT) to Mean Sea Level	5098.50ft
Vertical Reference Pt	Rig (20.5') (RT)	Rig (20.5') (RT) to Mud Line at Slot (SLOT#16 Desha 4-4-4L (760'FSL & 450'FWL,SEC.33))	5098.50ft
MD Reference Pt	Rig (20.5') (RT)	Section Origin	N 0.00, E 0.00 ft
Field Vertical Reference	Mean Sea Level	Section Azimuth	175.28°

Planned Wellpath Report

Desha 4-4-4L PWP Rev-A.0

Page 2 of 7

REFERENCE WELLPATH IDENTIFICATION

Operator	CONFLUENCE RESOURCES	Well	Desha 4-4-4L
Field	WELD COUNTY (NAD83, TRUE NORTH)	API/Legal	
Facility	SEC.33-T01N-R65W	Wellbore	Desha 4-4-4L PWB
Slot	SLOT#16 Desha 4-4-4L (760'FSL & 450'FWL,SEC.33)		

WELLPATH DATA (179 stations) † = interpolated, ‡ = extrapolated station

MD [ft]	Inclination [°]	Azimuth [°]	TVD [ft]	Vert Sect [ft]	North [ft]	East [ft]	Grid East [US ft]	Grid North [US ft]	Latitude	Longitude	DLS [°/100ft]	Comments
0.00†	0.000	131.987	0.00	0.00	0.00	0.00	3230607.46	1244871.63	40.0026200	-104.6768100	0.00	
20.50	0.000	131.987	20.50	0.00	0.00	0.00	3230607.46	1244871.63	40.0026200	-104.6768100	0.00	Tie On
120.50†	0.000	131.987	120.50	0.00	0.00	0.00	3230607.46	1244871.63	40.0026200	-104.6768100	0.00	
220.50†	0.000	131.987	220.50	0.00	0.00	0.00	3230607.46	1244871.63	40.0026200	-104.6768100	0.00	
320.50†	0.000	131.987	320.50	0.00	0.00	0.00	3230607.46	1244871.63	40.0026200	-104.6768100	0.00	
420.50†	0.000	131.987	420.50	0.00	0.00	0.00	3230607.46	1244871.63	40.0026200	-104.6768100	0.00	
520.50†	0.000	131.987	520.50	0.00	0.00	0.00	3230607.46	1244871.63	40.0026200	-104.6768100	0.00	
620.50†	0.000	131.987	620.50	0.00	0.00	0.00	3230607.46	1244871.63	40.0026200	-104.6768100	0.00	
720.50†	0.000	131.987	720.50	0.00	0.00	0.00	3230607.46	1244871.63	40.0026200	-104.6768100	0.00	
820.50†	0.000	131.987	820.50	0.00	0.00	0.00	3230607.46	1244871.63	40.0026200	-104.6768100	0.00	
920.50†	0.000	131.987	920.50	0.00	0.00	0.00	3230607.46	1244871.63	40.0026200	-104.6768100	0.00	
1020.50†	0.000	131.987	1020.50	0.00	0.00	0.00	3230607.46	1244871.63	40.0026200	-104.6768100	0.00	
1120.50†	0.000	131.987	1120.50	0.00	0.00	0.00	3230607.46	1244871.63	40.0026200	-104.6768100	0.00	
1220.50†	0.000	131.987	1220.50	0.00	0.00	0.00	3230607.46	1244871.63	40.0026200	-104.6768100	0.00	
1320.50†	0.000	131.987	1320.50	0.00	0.00	0.00	3230607.46	1244871.63	40.0026200	-104.6768100	0.00	
1420.50†	0.000	131.987	1420.50	0.00	0.00	0.00	3230607.46	1244871.63	40.0026200	-104.6768100	0.00	
1520.50†	0.000	131.987	1520.50	0.00	0.00	0.00	3230607.46	1244871.63	40.0026200	-104.6768100	0.00	
1550.00	0.000	131.987	1550.00	0.00	0.00	0.00	3230607.46	1244871.63	40.0026200	-104.6768100	0.00	End of Tangent
1620.50†	1.410	131.987	1620.49	0.63	-0.58	0.64	3230608.11	1244871.05	40.0026184	-104.6768077	2.00	
1720.50†	3.410	131.987	1720.40	3.69	-3.39	3.77	3230611.26	1244868.27	40.0026107	-104.6767965	2.00	
1820.50†	5.410	131.987	1820.10	9.29	-8.54	9.49	3230617.03	1244863.18	40.0025966	-104.6767761	2.00	
1920.50†	7.410	131.987	1919.47	17.41	-16.00	17.78	3230625.39	1244855.79	40.0025761	-104.6767465	2.00	
2020.50†	9.410	131.987	2018.39	28.06	-25.79	28.65	3230636.35	1244846.11	40.0025492	-104.6767077	2.00	
2120.50†	11.410	131.987	2116.74	41.21	-37.87	42.08	3230649.89	1244834.15	40.0025160	-104.6766598	2.00	
2158.30	12.166	131.987	2153.73	46.83	-43.04	47.82	3230655.68	1244829.03	40.0025019	-104.6766393	2.00	End of Build
2220.50†	12.166	131.987	2214.54	56.37	-51.81	57.57	3230665.51	1244820.36	40.0024778	-104.6766045	0.00	
2320.50†	12.166	131.987	2312.30	71.70	-65.91	73.23	3230681.30	1244806.41	40.0024391	-104.6765486	0.00	
2420.50†	12.166	131.987	2410.05	87.04	-80.01	88.90	3230697.09	1244792.45	40.0024004	-104.6764927	0.00	
2520.50†	12.166	131.987	2507.80	102.38	-94.10	104.56	3230712.89	1244778.50	40.0023617	-104.6764368	0.00	
2620.50†	12.166	131.987	2605.56	117.72	-108.20	120.23	3230728.68	1244764.55	40.0023230	-104.6763809	0.00	
2720.50†	12.166	131.987	2703.31	133.06	-122.30	135.89	3230744.48	1244750.60	40.0022843	-104.6763249	0.00	
2820.50†	12.166	131.987	2801.07	148.39	-136.40	151.55	3230760.27	1244736.65	40.0022456	-104.6762690	0.00	
2920.50†	12.166	131.987	2898.82	163.73	-150.49	167.22	3230776.06	1244722.70	40.0022069	-104.6762131	0.00	
3020.50†	12.166	131.987	2996.58	179.07	-164.59	182.88	3230791.86	1244708.75	40.0021682	-104.6761572	0.00	
3120.50†	12.166	131.987	3094.33	194.41	-178.69	198.55	3230807.65	1244694.79	40.0021295	-104.6761013	0.00	
3220.50†	12.166	131.987	3192.08	209.74	-192.79	214.21	3230823.45	1244680.84	40.0020908	-104.6760454	0.00	
3320.50†	12.166	131.987	3289.84	225.08	-206.89	229.88	3230839.24	1244666.89	40.0020521	-104.6759895	0.00	
3420.50†	12.166	131.987	3387.59	240.42	-220.98	245.54	3230855.04	1244652.94	40.0020134	-104.6759336	0.00	
3520.50†	12.166	131.987	3485.35	255.76	-235.08	261.21	3230870.83	1244638.99	40.0019747	-104.6758776	0.00	
3620.50†	12.166	131.987	3583.10	271.09	-249.18	276.87	3230886.62	1244625.04	40.0019360	-104.6758217	0.00	
3720.50†	12.166	131.987	3680.85	286.43	-263.28	292.54	3230902.42	1244611.09	40.0018973	-104.6757658	0.00	
3820.50†	12.166	131.987	3778.61	301.77	-277.37	308.20	3230918.21	1244597.14	40.0018586	-104.6757099	0.00	
3920.50†	12.166	131.987	3876.36	317.11	-291.47	323.86	3230934.01	1244583.18	40.0018199	-104.6756540	0.00	
4020.50†	12.166	131.987	3974.12	332.45	-305.57	339.53	3230949.80	1244569.23	40.0017812	-104.6755981	0.00	
4120.50†	12.166	131.987	4071.87	347.78	-319.67	355.19	3230965.59	1244555.28	40.0017425	-104.6755422	0.00	

Planned Wellpath Report

Desha 4-4-4L PWP Rev-A.0

Page 3 of 7

REFERENCE WELLPATH IDENTIFICATION

Operator	CONFLUENCE RESOURCES	Well	Desha 4-4-4L
Field	WELD COUNTY (NAD83, TRUE NORTH)	API/Legal	
Facility	SEC.33-T01N-R65W	Wellbore	Desha 4-4-4L PWB
Slot	SLOT#16 Desha 4-4-4L (760'FSL & 450'FWL,SEC.33)		

WELLPATH DATA (179 stations) † = interpolated, ‡ = extrapolated station

MD [ft]	Inclination [°]	Azimuth [°]	TVD [ft]	Vert Sect [ft]	North [ft]	East [ft]	Grid East [US ft]	Grid North [US ft]	Latitude	Longitude	DLS [°/100ft]	Comments
4220.50†	12.166	131.987	4169.63	363.12	-333.77	370.86	3230981.39	1244541.33	40.0017038	-104.6754862	0.00	
4320.50†	12.166	131.987	4267.38	378.46	-347.86	386.52	3230997.18	1244527.38	40.0016651	-104.6754303	0.00	
4420.50†	12.166	131.987	4365.13	393.80	-361.96	402.19	3231012.98	1244513.43	40.0016264	-104.6753744	0.00	
4520.50†	12.166	131.987	4462.89	409.13	-376.06	417.85	3231028.77	1244499.48	40.0015877	-104.6753185	0.00	
4620.50†	12.166	131.987	4560.64	424.47	-390.16	433.52	3231044.57	1244485.52	40.0015490	-104.6752626	0.00	
4720.50†	12.166	131.987	4658.40	439.81	-404.26	449.18	3231060.36	1244471.57	40.0015103	-104.6752067	0.00	
4820.50†	12.166	131.987	4756.15	455.15	-418.35	464.85	3231076.15	1244457.62	40.0014716	-104.6751508	0.00	
4920.50†	12.166	131.987	4853.90	470.49	-432.45	480.51	3231091.95	1244443.67	40.0014329	-104.6750949	0.00	
5020.50†	12.166	131.987	4951.66	485.82	-446.55	496.17	3231107.74	1244429.72	40.0013942	-104.6750389	0.00	
5120.50†	12.166	131.987	5049.41	501.16	-460.65	511.84	3231123.54	1244415.77	40.0013555	-104.6749830	0.00	
5220.50†	12.166	131.987	5147.17	516.50	-474.74	527.50	3231139.33	1244401.82	40.0013168	-104.6749271	0.00	
5320.50†	12.166	131.987	5244.92	531.84	-488.84	543.17	3231155.12	1244387.87	40.0012781	-104.6748712	0.00	
5420.50†	12.166	131.987	5342.68	547.17	-502.94	558.83	3231170.92	1244373.91	40.0012394	-104.6748153	0.00	
5520.50†	12.166	131.987	5440.43	562.51	-517.04	574.50	3231186.71	1244359.96	40.0012007	-104.6747594	0.00	
5620.50†	12.166	131.987	5538.18	577.85	-531.14	590.16	3231202.51	1244346.01	40.0011620	-104.6747035	0.00	
5720.50†	12.166	131.987	5635.94	593.19	-545.23	605.83	3231218.30	1244332.06	40.0011233	-104.6746476	0.00	
5820.50†	12.166	131.987	5733.69	608.53	-559.33	621.49	3231234.10	1244318.11	40.0010846	-104.6745917	0.00	
5920.50†	12.166	131.987	5831.45	623.86	-573.43	637.16	3231249.89	1244304.16	40.0010459	-104.6745357	0.00	
6020.50†	12.166	131.987	5929.20	639.20	-587.53	652.82	3231265.68	1244290.21	40.0010072	-104.6744798	0.00	
6120.50†	12.166	131.987	6026.95	654.54	-601.62	668.48	3231281.48	1244276.26	40.0009685	-104.6744239	0.00	
6220.50†	12.166	131.987	6124.71	669.88	-615.72	684.15	3231297.27	1244262.30	40.0009298	-104.6743680	0.00	
6320.50†	12.166	131.987	6222.46	685.21	-629.82	699.81	3231313.07	1244248.35	40.0008911	-104.6743121	0.00	
6420.50†	12.166	131.987	6320.22	700.55	-643.92	715.48	3231328.86	1244234.40	40.0008524	-104.6742562	0.00	
6520.50†	12.166	131.987	6417.97	715.89	-658.02	731.14	3231344.65	1244220.45	40.0008137	-104.6742003	0.00	
6620.50†	12.166	131.987	6515.72	731.23	-672.11	746.81	3231360.45	1244206.50	40.0007750	-104.6741444	0.00	
6720.50†	12.166	131.987	6613.48	746.57	-686.21	762.47	3231376.24	1244192.55	40.0007363	-104.6740884	0.00	
6820.50†	12.166	131.987	6711.23	761.90	-700.31	778.14	3231392.04	1244178.60	40.0006976	-104.6740325	0.00	
6920.50†	12.166	131.987	6808.99	777.24	-714.41	793.80	3231407.83	1244164.64	40.0006589	-104.6739766	0.00	
7020.50†	12.166	131.987	6906.74	792.58	-728.51	809.47	3231423.63	1244150.69	40.0006202	-104.6739207	0.00	
7120.50†	12.166	131.987	7004.50	807.92	-742.60	825.13	3231439.42	1244136.74	40.0005815	-104.6738648	0.00	
7206.23	12.166	131.987	7088.30	821.07	-754.69	838.56	3231452.96	1244124.78	40.0005483	-104.6738169	0.00	KOP
7220.50†	13.354	137.576	7102.22	823.46	-756.91	840.79	3231455.21	1244122.58	40.0005422	-104.6738089	12.00	
7320.50†	23.537	158.535	7197.05	851.82	-784.12	855.94	3231470.61	1244095.52	40.0004675	-104.6737548	12.00	
7420.50†	34.857	166.846	7284.24	899.38	-830.70	869.80	3231484.91	1244049.07	40.0003396	-104.6737054	12.00	
7520.50†	46.489	171.411	7359.97	964.07	-894.61	881.76	3231497.46	1243985.27	40.0001642	-104.6736627	12.00	
7620.50†	58.243	174.478	7420.94	1043.05	-973.07	891.31	3231507.73	1243906.91	39.9999488	-104.6736286	12.00	
7720.50†	70.054	176.843	7464.47	1132.87	-1062.65	898.01	3231515.26	1243817.40	39.9997029	-104.6736047	12.00	
7820.50†	81.892	178.875	7488.67	1229.61	-1159.42	901.58	3231519.74	1243720.67	39.9994372	-104.6735920	12.00	
7888.94	90.000	180.187	7493.50†	1297.63	-1227.63	902.14	3231520.92	1243652.47	39.9992500	-104.6735900	12.00	LANDING
7920.50†	90.000	180.187	7493.50	1329.08	-1259.19	902.03	3231521.11	1243620.91	39.9991634	-104.6735904	0.00	
8020.50†	90.000	180.187	7493.50	1428.71	-1359.19	901.71	3231521.72	1243520.92	39.9988889	-104.6735915	0.00	
8120.50†	90.000	180.187	7493.50	1528.34	-1459.19	901.38	3231522.32	1243420.92	39.9986144	-104.6735927	0.00	
8220.50†	90.000	180.187	7493.50	1627.98	-1559.19	901.05	3231522.92	1243320.93	39.9983398	-104.6735939	0.00	
8320.50†	90.000	180.187	7493.50	1727.61	-1659.19	900.73	3231523.52	1243220.93	39.9980653	-104.6735951	0.00	
8420.50†	90.000	180.187	7493.50	1827.25	-1759.19	900.40	3231524.12	1243120.94	39.9977908	-104.6735963	0.00	

Planned Wellpath Report

Desha 4-4-4L PWP Rev-A.0

Page 4 of 7

REFERENCE WELLPATH IDENTIFICATION			
Operator	CONFLUENCE RESOURCES	Well	Desha 4-4-4L
Field	WELD COUNTY (NAD83, TRUE NORTH)	API/Legal	
Facility	SEC.33-T01N-R65W	Wellbore	Desha 4-4-4L PWB
Slot	SLOT#16 Desha 4-4-4L (760'FSL & 450'FWL,SEC.33)		

WELLPATH DATA (179 stations) † = interpolated, ‡ = extrapolated station

MD [ft]	Inclination [°]	Azimuth [°]	TVD [ft]	Vert Sect [ft]	North [ft]	East [ft]	Grid East [US ft]	Grid North [US ft]	Latitude	Longitude	DLS [°/100ft]	Comments
8520.50†	90.000	180.187	7493.50	1926.88	-1859.19	900.08	3231524.72	1243020.94	39.9975163	-104.6735974	0.00	
8620.50†	90.000	180.187	7493.50	2026.51	-1959.18	899.75	3231525.33	1242920.95	39.9972418	-104.6735986	0.00	
8720.50†	90.000	180.187	7493.50	2126.15	-2059.18	899.42	3231525.93	1242820.95	39.9969673	-104.6735998	0.00	
8820.50†	90.000	180.187	7493.50	2225.78	-2159.18	899.10	3231526.53	1242720.96	39.9966928	-104.6736010	0.00	
8920.50†	90.000	180.187	7493.50	2325.42	-2259.18	898.77	3231527.13	1242620.97	39.9964183	-104.6736022	0.00	
9020.50†	90.000	180.187	7493.50	2425.05	-2359.18	898.44	3231527.73	1242520.97	39.9961438	-104.6736033	0.00	
9120.50†	90.000	180.187	7493.50	2524.69	-2459.18	898.12	3231528.34	1242420.98	39.9958693	-104.6736045	0.00	
9220.50†	90.000	180.187	7493.50	2624.32	-2559.18	897.79	3231528.94	1242320.98	39.9955948	-104.6736057	0.00	
9320.50†	90.000	180.187	7493.50	2723.95	-2659.18	897.46	3231529.54	1242220.99	39.9953203	-104.6736069	0.00	
9420.50†	90.000	180.187	7493.50	2823.59	-2759.18	897.14	3231530.14	1242120.99	39.9950458	-104.6736080	0.00	
9520.50†	90.000	180.187	7493.50	2923.22	-2859.18	896.81	3231530.74	1242021.00	39.9947713	-104.6736092	0.00	
9620.50†	90.000	180.187	7493.50	3022.86	-2959.18	896.48	3231531.34	1241921.00	39.9944967	-104.6736104	0.00	
9720.50†	90.000	180.187	7493.50	3122.49	-3059.18	896.16	3231531.95	1241821.01	39.9942222	-104.6736116	0.00	
9820.50†	90.000	180.187	7493.50	3222.13	-3159.18	895.83	3231532.55	1241721.01	39.9939477	-104.6736128	0.00	
9920.50†	90.000	180.187	7493.50	3321.76	-3259.18	895.50	3231533.15	1241621.02	39.9936732	-104.6736139	0.00	
10020.50†	90.000	180.187	7493.50	3421.39	-3359.18	895.18	3231533.75	1241521.03	39.9933987	-104.6736151	0.00	
10120.50†	90.000	180.187	7493.50	3521.03	-3459.18	894.85	3231534.35	1241421.03	39.9931242	-104.6736163	0.00	
10220.50†	90.000	180.187	7493.50	3620.66	-3559.18	894.53	3231534.96	1241321.04	39.9928497	-104.6736175	0.00	
10320.50†	90.000	180.187	7493.50	3720.30	-3659.18	894.20	3231535.56	1241221.04	39.9925752	-104.6736186	0.00	
10420.50†	90.000	180.187	7493.50	3819.93	-3759.18	893.87	3231536.16	1241121.05	39.9923007	-104.6736198	0.00	
10520.50†	90.000	180.187	7493.50	3919.56	-3859.17	893.55	3231536.76	1241021.05	39.9920262	-104.6736210	0.00	
10620.50†	90.000	180.187	7493.50	4019.20	-3959.17	893.22	3231537.36	1240921.06	39.9917517	-104.6736222	0.00	
10720.50†	90.000	180.187	7493.50	4118.83	-4059.17	892.89	3231537.97	1240821.06	39.9914772	-104.6736234	0.00	
10820.50†	90.000	180.187	7493.50	4218.47	-4159.17	892.57	3231538.57	1240721.07	39.9912027	-104.6736245	0.00	
10920.50†	90.000	180.187	7493.50	4318.10	-4259.17	892.24	3231539.17	1240621.07	39.9909281	-104.6736257	0.00	
11020.50†	90.000	180.187	7493.50	4417.74	-4359.17	891.91	3231539.77	1240521.08	39.9906536	-104.6736269	0.00	
11120.50†	90.000	180.187	7493.50	4517.37	-4459.17	891.59	3231540.37	1240421.08	39.9903791	-104.6736281	0.00	
11220.50†	90.000	180.187	7493.50	4617.00	-4559.17	891.26	3231540.97	1240321.09	39.9901046	-104.6736292	0.00	
11320.50†	90.000	180.187	7493.50	4716.64	-4659.17	890.93	3231541.58	1240221.10	39.9898301	-104.6736304	0.00	
11420.50†	90.000	180.187	7493.50	4816.27	-4759.17	890.61	3231542.18	1240121.10	39.9895556	-104.6736316	0.00	
11520.50†	90.000	180.187	7493.50	4915.91	-4859.17	890.28	3231542.78	1240021.11	39.9892811	-104.6736328	0.00	
11620.50†	90.000	180.187	7493.50	5015.54	-4959.17	889.96	3231543.38	1239921.11	39.9890066	-104.6736340	0.00	
11720.50†	90.000	180.187	7493.50	5115.18	-5059.17	889.63	3231543.98	1239821.12	39.9887321	-104.6736351	0.00	
11820.50†	90.000	180.187	7493.50	5214.81	-5159.17	889.30	3231544.59	1239721.12	39.9884576	-104.6736363	0.00	
11920.50†	90.000	180.187	7493.50	5314.44	-5259.17	888.98	3231545.19	1239621.13	39.9881831	-104.6736375	0.00	
12020.50†	90.000	180.187	7493.50	5414.08	-5359.17	888.65	3231545.79	1239521.13	39.9879086	-104.6736387	0.00	
12120.50†	90.000	180.187	7493.50	5513.71	-5459.17	888.32	3231546.39	1239421.14	39.9876341	-104.6736398	0.00	
12220.50†	90.000	180.187	7493.50	5613.35	-5559.17	888.00	3231546.99	1239321.14	39.9873595	-104.6736410	0.00	
12320.50†	90.000	180.187	7493.50	5712.98	-5659.16	887.67	3231547.60	1239221.15	39.9870850	-104.6736422	0.00	
12420.50†	90.000	180.187	7493.50	5812.61	-5759.16	887.34	3231548.20	1239121.15	39.9868105	-104.6736434	0.00	
12520.50†	90.000	180.187	7493.50	5912.25	-5859.16	887.02	3231548.80	1239021.16	39.9865360	-104.6736446	0.00	
12620.50†	90.000	180.187	7493.50	6011.88	-5959.16	886.69	3231549.40	1238921.17	39.9862615	-104.6736457	0.00	
12720.50†	90.000	180.187	7493.50	6111.52	-6059.16	886.36	3231550.00	1238821.17	39.9859870	-104.6736469	0.00	
12820.50†	90.000	180.187	7493.50	6211.15	-6159.16	886.04	3231550.60	1238721.18	39.9857125	-104.6736481	0.00	
12920.50†	90.000	180.187	7493.50	6310.79	-6259.16	885.71	3231551.21	1238621.18	39.9854380	-104.6736493	0.00	



Planned Wellpath Report

Desha 4-4-4L PWP Rev-A.0

Page 5 of 7



REFERENCE WELLPATH IDENTIFICATION

Operator	CONFLUENCE RESOURCES	Well	Desha 4-4-4L
Field	WELD COUNTY (NAD83, TRUE NORTH)	API/Legal	
Facility	SEC.33-T01N-R65W	Wellbore	Desha 4-4-4L PWB
Slot	SLOT#16 Desha 4-4-4L (760'FSL & 450'FWL,SEC.33)		

WELLPATH DATA (179 stations) † = interpolated, ‡ = extrapolated station

MD [ft]	Inclination [°]	Azimuth [°]	TVD [ft]	Vert Sect [ft]	North [ft]	East [ft]	Grid East [US ft]	Grid North [US ft]	Latitude	Longitude	DLS [°/100ft]	Comments
13020.50†	90.000	180.187	7493.50	6410.42	-6359.16	885.39	3231551.81	1238521.19	39.9851635	-104.6736504	0.00	
13120.50†	90.000	180.187	7493.50	6510.05	-6459.16	885.06	3231552.41	1238421.19	39.9848890	-104.6736516	0.00	
13220.50†	90.000	180.187	7493.50	6609.69	-6559.16	884.73	3231553.01	1238321.20	39.9846145	-104.6736528	0.00	
13320.50†	90.000	180.187	7493.50	6709.32	-6659.16	884.41	3231553.61	1238221.20	39.9843400	-104.6736540	0.00	
13420.50†	90.000	180.187	7493.50	6808.96	-6759.16	884.08	3231554.22	1238121.21	39.9840655	-104.6736552	0.00	
13520.50†	90.000	180.187	7493.50	6908.59	-6859.16	883.75	3231554.82	1238021.21	39.9837909	-104.6736563	0.00	
13620.50†	90.000	180.187	7493.50	7008.23	-6959.16	883.43	3231555.42	1237921.22	39.9835164	-104.6736575	0.00	
13720.50†	90.000	180.187	7493.50	7107.86	-7059.16	883.10	3231556.02	1237821.22	39.9832419	-104.6736587	0.00	
13820.50†	90.000	180.187	7493.50	7207.49	-7159.16	882.77	3231556.62	1237721.23	39.9829674	-104.6736599	0.00	
13920.50†	90.000	180.187	7493.50	7307.13	-7259.16	882.45	3231557.22	1237621.24	39.9826929	-104.6736610	0.00	
14020.50†	90.000	180.187	7493.50	7406.76	-7359.16	882.12	3231557.83	1237521.24	39.9824184	-104.6736622	0.00	
14120.50†	90.000	180.187	7493.50	7506.40	-7459.16	881.79	3231558.43	1237421.25	39.9821439	-104.6736634	0.00	
14220.50†	90.000	180.187	7493.50	7606.03	-7559.15	881.47	3231559.03	1237321.25	39.9818694	-104.6736646	0.00	
14320.50†	90.000	180.187	7493.50	7705.66	-7659.15	881.14	3231559.63	1237221.26	39.9815949	-104.6736658	0.00	
14420.50†	90.000	180.187	7493.50	7805.30	-7759.15	880.82	3231560.23	1237121.26	39.9813204	-104.6736669	0.00	
14520.50†	90.000	180.187	7493.50	7904.93	-7859.15	880.49	3231560.84	1237021.27	39.9810459	-104.6736681	0.00	
14620.50†	90.000	180.187	7493.50	8004.57	-7959.15	880.16	3231561.44	1236921.27	39.9807714	-104.6736693	0.00	
14720.50†	90.000	180.187	7493.50	8104.20	-8059.15	879.84	3231562.04	1236821.28	39.9804969	-104.6736705	0.00	
14820.50†	90.000	180.187	7493.50	8203.84	-8159.15	879.51	3231562.64	1236721.28	39.9802223	-104.6736716	0.00	
14920.50†	90.000	180.187	7493.50	8303.47	-8259.15	879.18	3231563.24	1236621.29	39.9799478	-104.6736728	0.00	
15020.50†	90.000	180.187	7493.50	8403.10	-8359.15	878.86	3231563.85	1236521.29	39.9796733	-104.6736740	0.00	
15120.50†	90.000	180.187	7493.50	8502.74	-8459.15	878.53	3231564.45	1236421.30	39.9793988	-104.6736752	0.00	
15220.50†	90.000	180.187	7493.50	8602.37	-8559.15	878.20	3231565.05	1236321.31	39.9791243	-104.6736763	0.00	
15320.50†	90.000	180.187	7493.50	8702.01	-8659.15	877.88	3231565.65	1236221.31	39.9788498	-104.6736775	0.00	
15420.50†	90.000	180.187	7493.50	8801.64	-8759.15	877.55	3231566.25	1236121.32	39.9785753	-104.6736787	0.00	
15520.50†	90.000	180.187	7493.50	8901.28	-8859.15	877.22	3231566.85	1236021.32	39.9783008	-104.6736799	0.00	
15620.50†	90.000	180.187	7493.50	9000.91	-8959.15	876.90	3231567.46	1235921.33	39.9780263	-104.6736811	0.00	
15720.50†	90.000	180.187	7493.50	9100.54	-9059.15	876.57	3231568.06	1235821.33	39.9777518	-104.6736822	0.00	
15820.50†	90.000	180.187	7493.50	9200.18	-9159.15	876.24	3231568.66	1235721.34	39.9774773	-104.6736834	0.00	
15920.50†	90.000	180.187	7493.50	9299.81	-9259.15	875.92	3231569.26	1235621.34	39.9772028	-104.6736846	0.00	
16020.50†	90.000	180.187	7493.50	9399.45	-9359.15	875.59	3231569.86	1235521.35	39.9769282	-104.6736858	0.00	
16120.50†	90.000	180.187	7493.50	9499.08	-9459.14	875.27	3231570.47	1235421.35	39.9766537	-104.6736869	0.00	
16220.50†	90.000	180.187	7493.50	9598.71	-9559.14	874.94	3231571.07	1235321.36	39.9763792	-104.6736881	0.00	
16320.50†	90.000	180.187	7493.50	9698.35	-9659.14	874.61	3231571.67	1235221.36	39.9761047	-104.6736893	0.00	
16420.50†	90.000	180.187	7493.50	9797.98	-9759.14	874.29	3231572.27	1235121.37	39.9758302	-104.6736905	0.00	
16520.50†	90.000	180.187	7493.50	9897.62	-9859.14	873.96	3231572.87	1235021.38	39.9755557	-104.6736917	0.00	
16620.50†	90.000	180.187	7493.50	9997.25	-9959.14	873.63	3231573.47	1234921.38	39.9752812	-104.6736928	0.00	
16720.50†	90.000	180.187	7493.50	10096.89	-10059.14	873.31	3231574.08	1234821.39	39.9750067	-104.6736940	0.00	
16820.50†	90.000	180.187	7493.50	10196.52	-10159.14	872.98	3231574.68	1234721.39	39.9747322	-104.6736952	0.00	
16920.50†	90.000	180.187	7493.50	10296.15	-10259.14	872.65	3231575.28	1234621.40	39.9744577	-104.6736964	0.00	
17020.50†	90.000	180.187	7493.50	10395.79	-10359.14	872.33	3231575.88	1234521.40	39.9741832	-104.6736975	0.00	
17120.50†	90.000	180.187	7493.50	10495.42	-10459.14	872.00	3231576.48	1234421.41	39.9739087	-104.6736987	0.00	
17220.50†	90.000	180.187	7493.50	10595.06	-10559.14	871.67	3231577.09	1234321.41	39.9736342	-104.6736999	0.00	
17229.30	90.000	180.187	7493.50 ²	10603.82	-10567.94	871.65	3231577.14	1234312.62	39.9736100	-104.6737000	0.00	TD

REFERENCE WELLPATH IDENTIFICATION

Operator	CONFLUENCE RESOURCES	Well	Desha 4-4-4L
Field	WELD COUNTY (NAD83, TRUE NORTH)	API/Legal	
Facility	SEC.33-T01N-R65W	Wellbore	Desha 4-4-4L PWB
Slot	SLOT#16 Desha 4-4-4L (760'FSL & 450'FWL,SEC.33)		

HOLE & CASING SECTIONS - Ref Wellbore: Desha 4-4-4L PWB Ref Wellpath: Desha 4-4-4L PWP Rev-A.0

String/Diameter	Start MD [ft]	End MD [ft]	Interval [ft]	Start TVD [ft]	End TVD [ft]	Start N/S [ft]	Start E/W [ft]	End N/S [ft]	End E/W [ft]
9.625in Casing Surface	20.50	1500.00	1479.50	20.50	1500.00	0.00	0.00	0.00	0.00

TARGETS

Name	MD [ft]	TVD [ft]	North [ft]	East [ft]	Grid East [US ft]	Grid North [US ft]	Latitude	Longitude	Shape
SEC.04-T01S-R65W	N/A	0.00	-72.86	2.80	3230610.94	1244798.80	40.0024200	-104.6768000	polygon
2D Polygon: dimensions not calculated									
SEC.04/09-T01S-R65W 470' SETBACK	N/A	0.00	-72.86	2.80	3230610.94	1244798.80	40.0024200	-104.6768000	polygon
2D Polygon: dimensions not calculated									
SEC.09-T01S-R65W	N/A	0.00	-72.86	2.80	3230610.94	1244798.80	40.0024200	-104.6768000	polygon
2D Polygon: dimensions not calculated									
2) Desha 4-4-4L BHL REV-1 (470'FSL & 1334'FWL,SEC.09)	17229.30	7493.50	-10567.94	871.65	3231577.14	1234312.62	39.9736100	-104.6737000	point
1) Desha 4-4-4L LP REV-1 (470'FNL & 1334'FWL,SEC.04)	7888.94	7493.50	-1227.63	902.14	3231520.92	1243652.47	39.9992500	-104.6735900	point

SURVEY PROGRAM - Ref Wellbore: Desha 4-4-4L PWB Ref Wellpath: Desha 4-4-4L PWP Rev-A.0

Start MD [ft]	End MD [ft]	Positional Uncertainty Model	Log Name/Comment	Wellbore
20.50	1500.00	BH NaviTrak (2019) (Axial)		Desha 4-4-4L PWB
1500.00	17229.30	BH AutoTrak Curve/eXpress (2019) (Short spacing)		Desha 4-4-4L PWB

Planned Wellpath Report

Desha 4-4-4L PWP Rev-A.0

Page 7 of 7

REFERENCE WELLPATH IDENTIFICATION

Operator	CONFLUENCE RESOURCES	Well	Desha 4-4-4L
Field	WELD COUNTY (NAD83, TRUE NORTH)	API/Legal	
Facility	SEC.33-T01N-R65W	Wellbore	Desha 4-4-4L PWB
Slot	SLOT#16 Desha 4-4-4L (760'FSL & 450'FWL,SEC.33)		

DESIGN COMMENTS

MD [ft]	Inclination [°]	Azimuth [°]	TVD [ft]	Comment
20.50	0.000	131.987	20.50	Tie On
1550.00	0.000	131.987	1550.00	End of Tangent
2158.30	12.166	131.987	2153.73	End of Build
7206.23	12.166	131.987	7088.30	KOP
7888.94	90.000	180.187	7493.50	LANDING
17229.30	90.000	180.187	7493.50	TD