

CONFLUENCE RESOURCES

Location:	COLORADO	Slot:	SLOT#20 Desha 4-3-4L (860'FSL & 450'FWL,SEC.33)
Field:	WELD COUNTY (NAD83, TRUE NORTH)	Well:	Desha 4-3-4L
Facility:	SEC.33-T01N-R65W	Wellbore:	Desha 4-3-4L PWB
Plot reference wellpath is Desha 4-3-4L PWP RevA.0		Grid System: NAD83 / Lambert Colorado SP, Northern Zone (501), US feet	
True vertical depths are referenced to Rig (20.5) (RT)		North Reference: True north	
Reference wellpath measured depths are referenced to Rig (20.5) (RT)		Scale: True distance	
Rig (20.5) (RT) to Mean Sea Level: 5098.5 feet		Coordinates are in feet referenced to Slot	
Mean Sea Level to Mud line (At Slot: SLOT#20 Desha 4-3-4L (860'FSL & 450'FWL,SEC.33)): 0 feet		Depths are in feet	
Offset wellpath MDs are referenced to each path's default MD datum		Created by: painstr on 2020-10-07, Database: WA_Denver	

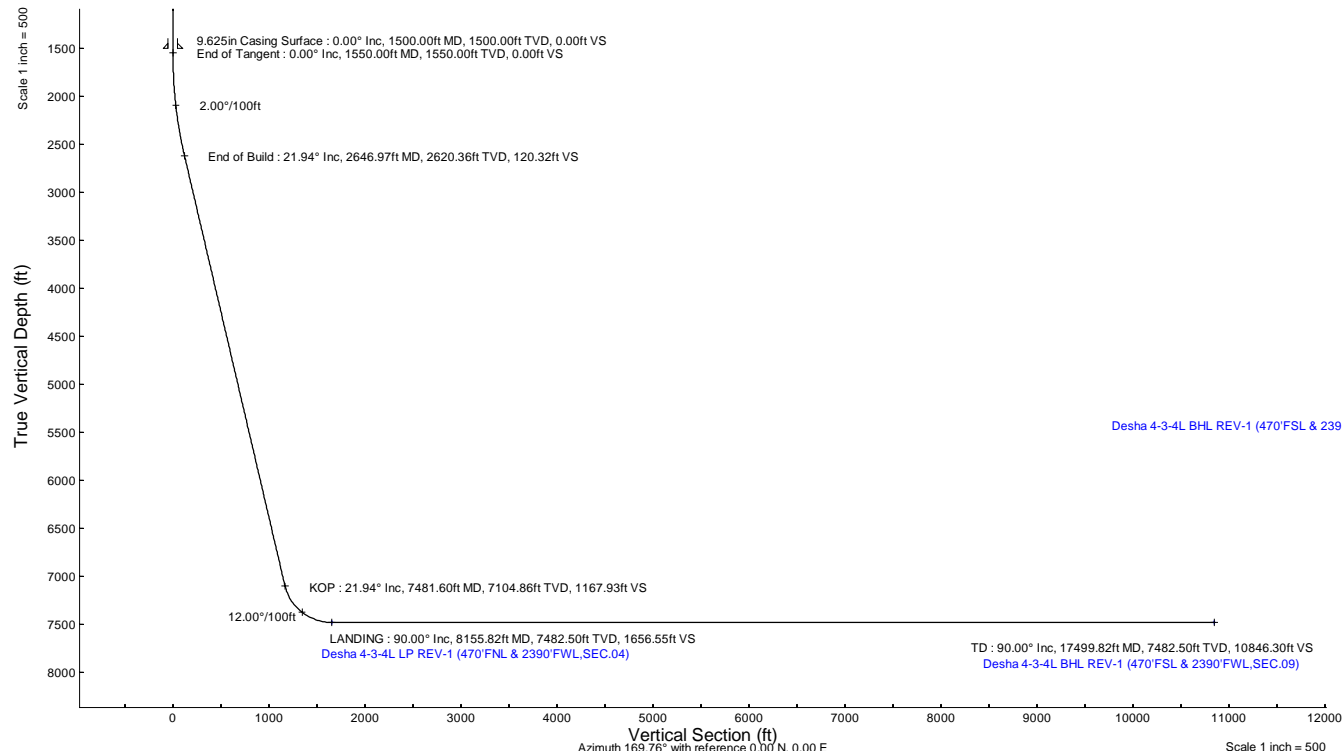
Location Information				
Facility Name		Grid East (US ft)	Grid North (US ft)	Latitude
SEC.33-T01N-R65W		3230456.897	1245096.090	40°00'11.6640"N
Slot		Local N (ft)	Local E (ft)	Longitude
SLOT#20 Desha 4-3-4L (860'FSL & 450'FWL,SEC.33)		-123.86	148.48	104°40'36.5160"W
Rig (20.5) (RT) to Mud line (At Slot: SLOT#20 Desha 4-3-4L (860'FSL & 450'FWL,SEC.33))		3230606.515		40°00'10.4400"N
Mean Sea Level to Mud line (At Slot: SLOT#20 Desha 4-3-4L (860'FSL & 450'FWL,SEC.33))		1244973.620		104°40'36.5160"W
Rig (20.5) (RT) to Mean Sea Level		5098.58		0ft

Survey Program				
Start MD (ft)	End MD (ft)	Tool	Model	Log Name/Comment
20.50	1500.00	BH NavTrak (2019)	BH NavTrak (2019) (Axial)	Desha 4-3-4L PWB
1500.00	17499.82	BH AutoTrak Curve/xpress (2019)	BH AutoTrak Curve/xpress (2019) (Short spacing)	Desha 4-3-4L PWB

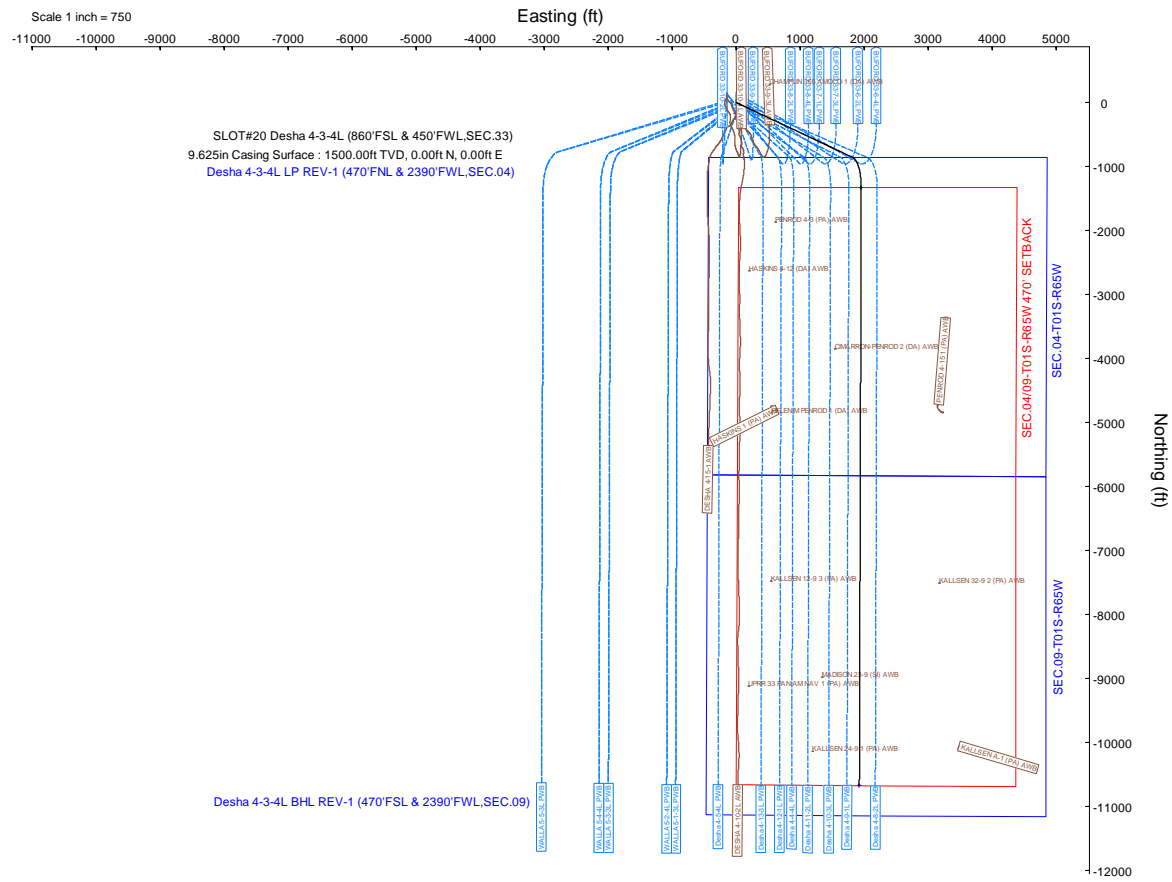
Hole and Casing Sections				
Name	Start MD (ft)	End MD (ft)	Interval (ft)	Wellbore
9.625in Casing Surface	20.50	1500.00	1479.50	Desha 4-3-4L PWB

Bottom Hole Location				
MD (ft)	Inc (°)	Az (°)	TVD (ft)	Local N (ft)
17499.82	90.000	180.185	7482.50	-10673.52

Targets				
Name	MD (ft)	TVD (ft)	Local N (ft)	Local E (ft)
SEC.04-T01S-R65W	N/A	0.00	-174.86	2.80
SEC.0409-T01S-R65W 470' SETBACK	N/A	0.00	-174.86	2.80
SEC.09-T01S-R65W	N/A	0.00	-174.86	2.80
Desha 4-3-4L BHL REV-1 (470'FNL & 2390'FWL,SEC.09)	17499.82	7482.50	-10673.52	1928.27
Desha 4-3-4L LP REV-1 (470'FNL & 2390'FWL,SEC.04)	8155.82	7482.50	-1329.57	1958.37



Well Profile Data								
Design Comment	MD (ft)	Inc (°)	Az (°)	TVD (ft)	Local N (ft)	Local E (ft)	DLS (°/100ft)	VS (ft)
Tie On	20.50	0.000	115.207	20.50	0.00	0.00	0.00	0.00
End of Tangent	1550.00	0.000	115.207	1550.00	0.00	0.00	0.00	0.00
End of Build	2646.97	21.939	115.207	2620.36	-88.36	187.71	2.00	120.32
KOP	7481.60	21.939	115.207	7104.86	-857.66	1822.05	0.00	1167.93
LANDING	8155.82	90.000	180.185	7482.50	-1329.57	1958.37	12.00	1656.55
TD	17499.82	90.000	180.185	7482.50	-10673.52	1928.27	0.00	10846.30





Planned Wellpath Report

Desha 4-3-4L PWP Rev-A.0

Page 1 of 7



REFERENCE WELLPATH IDENTIFICATION

Operator	CONFLUENCE RESOURCES	Well	Desha 4-3-4L
Field	WELD COUNTY (NAD83, TRUE NORTH)	API/Legal	
Facility	SEC.33-T01N-R65W	Wellbore	Desha 4-3-4L PWB
Slot	SLOT#20 Desha 4-3-4L (860'FSL & 450'FWL,SEC.33)		

REPORT SETUP INFORMATION

Projection System	NAD83 / Lambert Colorado SP, Northern Zone (501), US feet	Software System	WellArchitect® 6.0
North Reference	True	User	Painsetr
Scale	0.999966	Report Generated	10/7/2020 at 11:15:10 AM
Convergence at slot	0.53° East	Database	WA_Denver

WELLPATH LOCATION

	Local coordinates		Grid coordinates		Geographic coordinates	
	North[ft]	East[ft]	Easting[US ft]	Northing[US ft]	Latitude	Longitude
Slot Location	-123.86	148.48	3230606.52	1244973.62	40.0029000°	-104.6768100°
Facility Reference Pt			3230456.90	1245096.09	40.0032400°	-104.6773400°
Field Reference Pt			3230456.90	1245096.09	40.0032400°	-104.6773400°

WELLPATH DATUM

Calculation method	Minimum curvature	Rig (20.5') (RT) to Facility Vertical Datum	5098.50ft
Horizontal Reference Pt	Slot	Rig (20.5') (RT) to Mean Sea Level	5098.50ft
Vertical Reference Pt	Rig (20.5') (RT)	Rig (20.5') (RT) to Mud Line at Slot (SLOT#20 Desha 4-3-4L (860'FSL & 450'FWL,SEC.33))	5098.50ft
MD Reference Pt	Rig (20.5') (RT)	Section Origin	N 0.00, E 0.00 ft
Field Vertical Reference	Mean Sea Level	Section Azimuth	169.76°

Planned Wellpath Report

Desha 4-3-4L PWP Rev-A.0

Page 2 of 7

REFERENCE WELLPATH IDENTIFICATION			
Operator	CONFLUENCE RESOURCES	Well	Desha 4-3-4L
Field	WELD COUNTY (NAD83, TRUE NORTH)	API/Legal	
Facility	SEC.33-T01N-R65W	Wellbore	Desha 4-3-4L PWB
Slot	SLOT#20 Desha 4-3-4L (860'FSL & 450'FWL,SEC.33)		

WELLPATH DATA (181 stations) † = interpolated, ‡ = extrapolated station

MD [ft]	Inclination [°]	Azimuth [°]	TVD [ft]	Vert Sect [ft]	North [ft]	East [ft]	Grid East [US ft]	Grid North [US ft]	Latitude	Longitude	DLS [°/100ft]	Comments
0.00†	0.000	115.207	0.00	0.00	0.00	0.00	3230606.52	1244973.62	40.0029000	-104.6768100	0.00	
20.50	0.000	115.207	20.50	0.00	0.00	0.00	3230606.52	1244973.62	40.0029000	-104.6768100	0.00	Tie On
120.50†	0.000	115.207	120.50	0.00	0.00	0.00	3230606.52	1244973.62	40.0029000	-104.6768100	0.00	
220.50†	0.000	115.207	220.50	0.00	0.00	0.00	3230606.52	1244973.62	40.0029000	-104.6768100	0.00	
320.50†	0.000	115.207	320.50	0.00	0.00	0.00	3230606.52	1244973.62	40.0029000	-104.6768100	0.00	
420.50†	0.000	115.207	420.50	0.00	0.00	0.00	3230606.52	1244973.62	40.0029000	-104.6768100	0.00	
520.50†	0.000	115.207	520.50	0.00	0.00	0.00	3230606.52	1244973.62	40.0029000	-104.6768100	0.00	
620.50†	0.000	115.207	620.50	0.00	0.00	0.00	3230606.52	1244973.62	40.0029000	-104.6768100	0.00	
720.50†	0.000	115.207	720.50	0.00	0.00	0.00	3230606.52	1244973.62	40.0029000	-104.6768100	0.00	
820.50†	0.000	115.207	820.50	0.00	0.00	0.00	3230606.52	1244973.62	40.0029000	-104.6768100	0.00	
920.50†	0.000	115.207	920.50	0.00	0.00	0.00	3230606.52	1244973.62	40.0029000	-104.6768100	0.00	
1020.50†	0.000	115.207	1020.50	0.00	0.00	0.00	3230606.52	1244973.62	40.0029000	-104.6768100	0.00	
1120.50†	0.000	115.207	1120.50	0.00	0.00	0.00	3230606.52	1244973.62	40.0029000	-104.6768100	0.00	
1220.50†	0.000	115.207	1220.50	0.00	0.00	0.00	3230606.52	1244973.62	40.0029000	-104.6768100	0.00	
1320.50†	0.000	115.207	1320.50	0.00	0.00	0.00	3230606.52	1244973.62	40.0029000	-104.6768100	0.00	
1420.50†	0.000	115.207	1420.50	0.00	0.00	0.00	3230606.52	1244973.62	40.0029000	-104.6768100	0.00	
1520.50†	0.000	115.207	1520.50	0.00	0.00	0.00	3230606.52	1244973.62	40.0029000	-104.6768100	0.00	
1550.00	0.000	115.207	1550.00	0.00	0.00	0.00	3230606.52	1244973.62	40.0029000	-104.6768100	0.00	End of Tangent
1620.50†	1.410	115.207	1620.49	0.50	-0.37	0.78	3230607.30	1244973.26	40.0028990	-104.6768072	2.00	
1720.50†	3.410	115.207	1720.40	2.94	-2.16	4.59	3230611.12	1244971.50	40.0028941	-104.6767936	2.00	
1820.50†	5.410	115.207	1820.10	7.40	-5.43	11.55	3230618.11	1244968.29	40.0028851	-104.6767688	2.00	
1920.50†	7.410	115.207	1919.47	13.88	-10.19	21.65	3230628.25	1244963.63	40.0028720	-104.6767327	2.00	
2020.50†	9.410	115.207	2018.39	22.36	-16.42	34.88	3230641.54	1244957.53	40.0028549	-104.6766855	2.00	
2120.50†	11.410	115.207	2116.74	32.84	-24.11	51.23	3230657.96	1244949.98	40.0028338	-104.6766271	2.00	
2220.50†	13.410	115.207	2214.40	45.30	-33.27	70.67	3230677.49	1244941.01	40.0028087	-104.6765577	2.00	
2320.50†	15.410	115.207	2311.24	59.73	-43.86	93.18	3230700.10	1244930.62	40.0027796	-104.6764774	2.00	
2420.50†	17.410	115.207	2407.17	76.11	-55.89	118.74	3230725.77	1244918.83	40.0027466	-104.6763861	2.00	
2520.50†	19.410	115.207	2502.04	94.43	-69.34	147.32	3230754.46	1244905.65	40.0027096	-104.6762842	2.00	
2620.50†	21.410	115.207	2595.76	114.65	-84.20	178.87	3230786.15	1244891.09	40.0026689	-104.6761715	2.00	
2646.97	21.939	115.207	2620.36	120.32	-88.36	187.71	3230795.03	1244887.01	40.0026574	-104.6761400	2.00	End of Build
2720.50†	21.939	115.207	2688.56	136.26	-100.06	212.57	3230820.00	1244875.54	40.0026253	-104.6760512	0.00	
2820.50†	21.939	115.207	2781.32	157.93	-115.97	246.37	3230853.95	1244859.94	40.0025816	-104.6759306	0.00	
2920.50†	21.939	115.207	2874.08	179.59	-131.88	280.18	3230887.90	1244844.35	40.0025380	-104.6758099	0.00	
3020.50†	21.939	115.207	2966.84	201.26	-147.80	313.98	3230921.85	1244828.75	40.0024943	-104.6756892	0.00	
3120.50†	21.939	115.207	3059.60	222.93	-163.71	347.79	3230955.80	1244813.15	40.0024506	-104.6755686	0.00	
3220.50†	21.939	115.207	3152.35	244.60	-179.62	381.59	3230989.75	1244797.55	40.0024069	-104.6754479	0.00	
3320.50†	21.939	115.207	3245.11	266.27	-195.53	415.40	3231023.70	1244781.96	40.0023632	-104.6753272	0.00	
3420.50†	21.939	115.207	3337.87	287.94	-211.45	449.20	3231057.65	1244766.36	40.0023196	-104.6752066	0.00	
3520.50†	21.939	115.207	3430.63	309.61	-227.36	483.01	3231091.60	1244750.76	40.0022759	-104.6750859	0.00	
3620.50†	21.939	115.207	3523.39	331.28	-243.27	516.81	3231125.55	1244735.17	40.0022322	-104.6749653	0.00	
3720.50†	21.939	115.207	3616.14	352.94	-259.18	550.62	3231159.50	1244719.57	40.0021885	-104.6748446	0.00	
3820.50†	21.939	115.207	3708.90	374.61	-275.10	584.42	3231193.44	1244703.97	40.0021448	-104.6747239	0.00	
3920.50†	21.939	115.207	3801.66	396.28	-291.01	618.23	3231227.39	1244688.37	40.0021011	-104.6746033	0.00	
4020.50†	21.939	115.207	3894.42	417.95	-306.92	652.03	3231261.34	1244672.78	40.0020575	-104.6744826	0.00	
4120.50†	21.939	115.207	3987.17	439.62	-322.83	685.84	3231295.29	1244657.18	40.0020138	-104.6743619	0.00	

Planned Wellpath Report

Desha 4-3-4L PWP Rev-A.0

Page 3 of 7

REFERENCE WELLPATH IDENTIFICATION			
Operator	CONFLUENCE RESOURCES	Well	Desha 4-3-4L
Field	WELD COUNTY (NAD83, TRUE NORTH)	API/Legal	
Facility	SEC.33-T01N-R65W	Wellbore	Desha 4-3-4L PWB
Slot	SLOT#20 Desha 4-3-4L (860'FSL & 450'FWL,SEC.33)		

WELLPATH DATA (181 stations) † = interpolated, ‡ = extrapolated station

MD [ft]	Inclination [°]	Azimuth [°]	TVD [ft]	Vert Sect [ft]	North [ft]	East [ft]	Grid East [US ft]	Grid North [US ft]	Latitude	Longitude	DLS [°/100ft]	Comments
4220.50†	21.939	115.207	4079.93	461.29	-338.75	719.64	3231329.24	1244641.58	40.0019701	-104.6742413	0.00	
4320.50†	21.939	115.207	4172.69	482.96	-354.66	753.45	3231363.19	1244625.98	40.0019264	-104.6741206	0.00	
4420.50†	21.939	115.207	4265.45	504.63	-370.57	787.25	3231397.14	1244610.39	40.0018827	-104.6740000	0.00	
4520.50†	21.939	115.207	4358.21	526.29	-386.48	821.06	3231431.09	1244594.79	40.0018390	-104.6738793	0.00	
4620.50†	21.939	115.207	4450.96	547.96	-402.39	854.86	3231465.04	1244579.19	40.0017954	-104.6737586	0.00	
4720.50†	21.939	115.207	4543.72	569.63	-418.31	888.67	3231498.99	1244563.59	40.0017517	-104.6736380	0.00	
4820.50†	21.939	115.207	4636.48	591.30	-434.22	922.47	3231532.94	1244548.00	40.0017080	-104.6735173	0.00	
4920.50†	21.939	115.207	4729.24	612.97	-450.13	956.28	3231566.89	1244532.40	40.0016643	-104.6733966	0.00	
5020.50†	21.939	115.207	4822.00	634.64	-466.04	990.08	3231600.84	1244516.80	40.0016206	-104.6732760	0.00	
5120.50†	21.939	115.207	4914.75	656.31	-481.96	1023.88	3231634.79	1244501.21	40.0015769	-104.6731553	0.00	
5220.50†	21.939	115.207	5007.51	677.98	-497.87	1057.69	3231668.74	1244485.61	40.0015332	-104.6730347	0.00	
5320.50†	21.939	115.207	5100.27	699.64	-513.78	1091.49	3231702.69	1244470.01	40.0014896	-104.6729140	0.00	
5420.50†	21.939	115.207	5193.03	721.31	-529.69	1125.30	3231736.64	1244454.41	40.0014459	-104.6727933	0.00	
5520.50†	21.939	115.207	5285.79	742.98	-545.61	1159.10	3231770.59	1244438.82	40.0014022	-104.6726727	0.00	
5620.50†	21.939	115.207	5378.54	764.65	-561.52	1192.91	3231804.54	1244423.22	40.0013585	-104.6725520	0.00	
5720.50†	21.939	115.207	5471.30	786.32	-577.43	1226.71	3231838.49	1244407.62	40.0013148	-104.6724314	0.00	
5820.50†	21.939	115.207	5564.06	807.99	-593.34	1260.52	3231872.44	1244392.02	40.0012711	-104.6723107	0.00	
5920.50†	21.939	115.207	5656.82	829.66	-609.26	1294.32	3231906.39	1244376.43	40.0012274	-104.6721900	0.00	
6020.50†	21.939	115.207	5749.58	851.33	-625.17	1328.13	3231940.34	1244360.83	40.0011838	-104.6720694	0.00	
6120.50†	21.939	115.207	5842.33	872.99	-641.08	1361.93	3231974.29	1244345.23	40.0011401	-104.6719487	0.00	
6220.50†	21.939	115.207	5935.09	894.66	-656.99	1395.74	3232008.24	1244329.63	40.0010964	-104.6718281	0.00	
6320.50†	21.939	115.207	6027.85	916.33	-672.91	1429.54	3232042.19	1244314.04	40.0010527	-104.6717074	0.00	
6420.50†	21.939	115.207	6120.61	938.00	-688.82	1463.35	3232076.14	1244298.44	40.0010090	-104.6715867	0.00	
6520.50†	21.939	115.207	6213.36	959.67	-704.73	1497.15	3232110.09	1244282.84	40.0009653	-104.6714661	0.00	
6620.50†	21.939	115.207	6306.12	981.34	-720.64	1530.96	3232144.04	1244267.25	40.0009216	-104.6713454	0.00	
6720.50†	21.939	115.207	6398.88	1003.01	-736.56	1564.76	3232177.99	1244251.65	40.0008780	-104.6712248	0.00	
6820.50†	21.939	115.207	6491.64	1024.68	-752.47	1598.57	3232211.94	1244236.05	40.0008343	-104.6711041	0.00	
6920.50†	21.939	115.207	6584.40	1046.34	-768.38	1632.37	3232245.89	1244220.45	40.0007906	-104.6709834	0.00	
7020.50†	21.939	115.207	6677.15	1068.01	-784.29	1666.18	3232279.84	1244204.86	40.0007469	-104.6708628	0.00	
7120.50†	21.939	115.207	6769.91	1089.68	-800.20	1699.98	3232313.79	1244189.26	40.0007032	-104.6707421	0.00	
7220.50†	21.939	115.207	6862.67	1111.35	-816.12	1733.79	3232347.74	1244173.66	40.0006595	-104.6706215	0.00	
7320.50†	21.939	115.207	6955.43	1133.02	-832.03	1767.59	3232381.69	1244158.06	40.0006158	-104.6705008	0.00	
7420.50†	21.939	115.207	7048.19	1154.69	-847.94	1801.39	3232415.64	1244142.47	40.0005721	-104.6703802	0.00	
7481.60	21.939	115.207	7104.86	1167.93	-857.66	1822.05	3232436.38	1244132.94	40.0005455	-104.6703064	0.00	KOP
7520.50†	24.158	125.722	7140.67	1177.87	-865.41	1835.09	3232449.50	1244125.31	40.0005242	-104.6702599	12.00	
7620.50†	32.218	144.791	7228.91	1216.89	-899.26	1867.19	3232481.91	1244091.76	40.0004313	-104.6701453	12.00	
7720.50†	42.042	156.308	7308.64	1273.83	-951.90	1896.12	3232511.33	1244039.40	40.0002868	-104.6700421	12.00	
7820.50†	52.640	164.005	7376.36	1346.20	-1021.02	1920.62	3232536.46	1243970.51	40.0000970	-104.6699546	12.00	
7920.50†	63.611	169.751	7429.12	1430.84	-1103.60	1939.61	3232556.22	1243888.12	39.9998703	-104.6698869	12.00	
8020.50†	74.770	174.482	7464.61	1524.05	-1196.03	1952.26	3232569.73	1243795.81	39.9996166	-104.6698417	12.00	
8120.50†	86.018	178.729	7481.27	1621.76	-1294.28	1958.03	3232576.41	1243697.62	39.9993469	-104.6698212	12.00	
8155.82	90.000	180.185	7482.50†	1656.55	-1329.57	1958.37	3232577.07	1243662.33	39.9992500	-104.6698200	12.00	LANDING
8220.50†	90.000	180.185	7482.50	1720.16	-1394.25	1958.16	3232577.46	1243597.66	39.9990725	-104.6698208	0.00	
8320.50†	90.000	180.185	7482.50	1818.51	-1494.25	1957.83	3232578.07	1243497.67	39.9987980	-104.6698219	0.00	
8420.50†	90.000	180.185	7482.50	1916.86	-1594.24	1957.51	3232578.67	1243397.67	39.9985234	-104.6698231	0.00	



Planned Wellpath Report

Desha 4-3-4L PWP Rev-A.0

Page 4 of 7



REFERENCE WELLPATH IDENTIFICATION

Operator	CONFLUENCE RESOURCES	Well	Desha 4-3-4L
Field	WELD COUNTY (NAD83, TRUE NORTH)	API/Legal	
Facility	SEC.33-T01N-R65W	Wellbore	Desha 4-3-4L PWB
Slot	SLOT#20 Desha 4-3-4L (860'FSL & 450'FWL,SEC.33)		

WELLPATH DATA (181 stations) † = interpolated, ‡ = extrapolated station

MD [ft]	Inclination [°]	Azimuth [°]	TVD [ft]	Vert Sect [ft]	North [ft]	East [ft]	Grid East [US ft]	Grid North [US ft]	Latitude	Longitude	DLS [°/100ft]	Comments
8520.50†	90.000	180.185	7482.50	2015.21	-1694.24	1957.19	3232579.28	1243297.68	39.9982489	-104.6698243	0.00	
8620.50†	90.000	180.185	7482.50	2113.56	-1794.24	1956.87	3232579.89	1243197.68	39.9979744	-104.6698255	0.00	
8720.50†	90.000	180.185	7482.50	2211.91	-1894.24	1956.55	3232580.49	1243097.69	39.9976999	-104.6698266	0.00	
8820.50†	90.000	180.185	7482.50	2310.25	-1994.24	1956.22	3232581.10	1242997.69	39.9974254	-104.6698278	0.00	
8920.50†	90.000	180.185	7482.50	2408.60	-2094.24	1955.90	3232581.70	1242897.70	39.9971509	-104.6698290	0.00	
9020.50†	90.000	180.185	7482.50	2506.95	-2194.24	1955.58	3232582.31	1242797.70	39.9968764	-104.6698302	0.00	
9120.50†	90.000	180.185	7482.50	2605.30	-2294.24	1955.26	3232582.92	1242697.71	39.9966019	-104.6698314	0.00	
9220.50†	90.000	180.185	7482.50	2703.65	-2394.24	1954.94	3232583.52	1242597.72	39.9963274	-104.6698325	0.00	
9320.50†	90.000	180.185	7482.50	2802.00	-2494.24	1954.61	3232584.13	1242497.72	39.9960529	-104.6698337	0.00	
9420.50†	90.000	180.185	7482.50	2900.35	-2594.24	1954.29	3232584.73	1242397.73	39.9957784	-104.6698349	0.00	
9520.50†	90.000	180.185	7482.50	2998.70	-2694.24	1953.97	3232585.34	1242297.73	39.9955039	-104.6698361	0.00	
9620.50†	90.000	180.185	7482.50	3097.05	-2794.24	1953.65	3232585.95	1242197.74	39.9952294	-104.6698372	0.00	
9720.50†	90.000	180.185	7482.50	3195.40	-2894.24	1953.33	3232586.55	1242097.74	39.9949548	-104.6698384	0.00	
9820.50†	90.000	180.185	7482.50	3293.75	-2994.24	1953.00	3232587.16	1241997.75	39.9946803	-104.6698396	0.00	
9920.50†	90.000	180.185	7482.50	3392.10	-3094.24	1952.68	3232587.77	1241897.75	39.9944058	-104.6698408	0.00	
10020.50†	90.000	180.185	7482.50	3490.45	-3194.24	1952.36	3232588.37	1241797.76	39.9941313	-104.6698420	0.00	
10120.50†	90.000	180.185	7482.50	3588.79	-3294.24	1952.04	3232588.98	1241697.76	39.9938568	-104.6698431	0.00	
10220.50†	90.000	180.185	7482.50	3687.14	-3394.24	1951.72	3232589.58	1241597.77	39.9935823	-104.6698443	0.00	
10320.50†	90.000	180.185	7482.50	3785.49	-3494.23	1951.39	3232590.19	1241497.78	39.9933078	-104.6698455	0.00	
10420.50†	90.000	180.185	7482.50	3883.84	-3594.23	1951.07	3232590.80	1241397.78	39.9930333	-104.6698467	0.00	
10520.50†	90.000	180.185	7482.50	3982.19	-3694.23	1950.75	3232591.40	1241297.79	39.9927588	-104.6698478	0.00	
10620.50†	90.000	180.185	7482.50	4080.54	-3794.23	1950.43	3232592.01	1241197.79	39.9924843	-104.6698490	0.00	
10720.50†	90.000	180.185	7482.50	4178.89	-3894.23	1950.11	3232592.62	1241097.80	39.9922098	-104.6698502	0.00	
10820.50†	90.000	180.185	7482.50	4277.24	-3994.23	1949.78	3232593.22	1240997.80	39.9919353	-104.6698514	0.00	
10920.50†	90.000	180.185	7482.50	4375.59	-4094.23	1949.46	3232593.83	1240897.81	39.9916608	-104.6698526	0.00	
11020.50†	90.000	180.185	7482.50	4473.94	-4194.23	1949.14	3232594.43	1240797.81	39.9913863	-104.6698537	0.00	
11120.50†	90.000	180.185	7482.50	4572.29	-4294.23	1948.82	3232595.04	1240697.82	39.9911117	-104.6698549	0.00	
11220.50†	90.000	180.185	7482.50	4670.64	-4394.23	1948.50	3232595.65	1240597.82	39.9908372	-104.6698561	0.00	
11320.50†	90.000	180.185	7482.50	4768.99	-4494.23	1948.17	3232596.25	1240497.83	39.9905627	-104.6698573	0.00	
11420.50†	90.000	180.185	7482.50	4867.33	-4594.23	1947.85	3232596.86	1240397.83	39.9902882	-104.6698584	0.00	
11520.50†	90.000	180.185	7482.50	4965.68	-4694.23	1947.53	3232597.47	1240297.84	39.9900137	-104.6698596	0.00	
11620.50†	90.000	180.185	7482.50	5064.03	-4794.23	1947.21	3232598.07	1240197.85	39.9897392	-104.6698608	0.00	
11720.50†	90.000	180.185	7482.50	5162.38	-4894.23	1946.88	3232598.68	1240097.85	39.9894647	-104.6698620	0.00	
11820.50†	90.000	180.185	7482.50	5260.73	-4994.23	1946.56	3232599.28	1239997.86	39.9891902	-104.6698632	0.00	
11920.50†	90.000	180.185	7482.50	5359.08	-5094.23	1946.24	3232599.89	1239897.86	39.9889157	-104.6698643	0.00	
12020.50†	90.000	180.185	7482.50	5457.43	-5194.23	1945.92	3232600.50	1239797.87	39.9886412	-104.6698655	0.00	
12120.50†	90.000	180.185	7482.50	5555.78	-5294.23	1945.60	3232601.10	1239697.87	39.9883667	-104.6698667	0.00	
12220.50†	90.000	180.185	7482.50	5654.13	-5394.22	1945.27	3232601.71	1239597.88	39.9880922	-104.6698679	0.00	
12320.50†	90.000	180.185	7482.50	5752.48	-5494.22	1944.95	3232602.32	1239497.88	39.9878177	-104.6698690	0.00	
12420.50†	90.000	180.185	7482.50	5850.83	-5594.22	1944.63	3232602.92	1239397.89	39.9875431	-104.6698702	0.00	
12520.50†	90.000	180.185	7482.50	5949.18	-5694.22	1944.31	3232603.53	1239297.89	39.9872686	-104.6698714	0.00	
12620.50†	90.000	180.185	7482.50	6047.53	-5794.22	1943.99	3232604.13	1239197.90	39.9869941	-104.6698726	0.00	
12720.50†	90.000	180.185	7482.50	6145.87	-5894.22	1943.66	3232604.74	1239097.91	39.9867196	-104.6698737	0.00	
12820.50†	90.000	180.185	7482.50	6244.22	-5994.22	1943.34	3232605.35	1238997.91	39.9864451	-104.6698749	0.00	
12920.50†	90.000	180.185	7482.50	6342.57	-6094.22	1943.02	3232605.95	1238897.92	39.9861706	-104.6698761	0.00	

Planned Wellpath Report

Desha 4-3-4L PWP Rev-A.0

Page 5 of 7

REFERENCE WELLPATH IDENTIFICATION

Operator	CONFLUENCE RESOURCES	Well	Desha 4-3-4L
Field	WELD COUNTY (NAD83, TRUE NORTH)	API/Legal	
Facility	SEC.33-T01N-R65W	Wellbore	Desha 4-3-4L PWB
Slot	SLOT#20 Desha 4-3-4L (860'FSL & 450'FWL,SEC.33)		

WELLPATH DATA (181 stations) † = interpolated, ‡ = extrapolated station

MD [ft]	Inclination [°]	Azimuth [°]	TVD [ft]	Vert Sect [ft]	North [ft]	East [ft]	Grid East [US ft]	Grid North [US ft]	Latitude	Longitude	DLS [°/100ft]	Comments
13020.50†	90.000	180.185	7482.50	6440.92	-6194.22	1942.70	3232606.56	1238797.92	39.9858961	-104.6698773	0.00	
13120.50†	90.000	180.185	7482.50	6539.27	-6294.22	1942.38	3232607.17	1238697.93	39.9856216	-104.6698785	0.00	
13220.50†	90.000	180.185	7482.50	6637.62	-6394.22	1942.05	3232607.77	1238597.93	39.9853471	-104.6698796	0.00	
13320.50†	90.000	180.185	7482.50	6735.97	-6494.22	1941.73	3232608.38	1238497.94	39.9850726	-104.6698808	0.00	
13420.50†	90.000	180.185	7482.50	6834.32	-6594.22	1941.41	3232608.98	1238397.94	39.9847981	-104.6698820	0.00	
13520.50†	90.000	180.185	7482.50	6932.67	-6694.22	1941.09	3232609.59	1238297.95	39.9845236	-104.6698832	0.00	
13620.50†	90.000	180.185	7482.50	7031.02	-6794.22	1940.77	3232610.20	1238197.95	39.9842490	-104.6698843	0.00	
13720.50†	90.000	180.185	7482.50	7129.37	-6894.22	1940.44	3232610.80	1238097.96	39.9839745	-104.6698855	0.00	
13820.50†	90.000	180.185	7482.50	7227.72	-6994.22	1940.12	3232611.41	1237997.97	39.9837000	-104.6698867	0.00	
13920.50†	90.000	180.185	7482.50	7326.07	-7094.22	1939.80	3232612.02	1237897.97	39.9834255	-104.6698879	0.00	
14020.50†	90.000	180.185	7482.50	7424.41	-7194.22	1939.48	3232612.62	1237797.98	39.9831510	-104.6698891	0.00	
14120.50†	90.000	180.185	7482.50	7522.76	-7294.21	1939.16	3232613.23	1237697.98	39.9828765	-104.6698902	0.00	
14220.50†	90.000	180.185	7482.50	7621.11	-7394.21	1938.83	3232613.83	1237597.99	39.9826020	-104.6698914	0.00	
14320.50†	90.000	180.185	7482.50	7719.46	-7494.21	1938.51	3232614.44	1237497.99	39.9823275	-104.6698926	0.00	
14420.50†	90.000	180.185	7482.50	7817.81	-7594.21	1938.19	3232615.05	1237398.00	39.9820530	-104.6698938	0.00	
14520.50†	90.000	180.185	7482.50	7916.16	-7694.21	1937.87	3232615.65	1237298.00	39.9817785	-104.6698949	0.00	
14620.50†	90.000	180.185	7482.50	8014.51	-7794.21	1937.55	3232616.26	1237198.01	39.9815040	-104.6698961	0.00	
14720.50†	90.000	180.185	7482.50	8112.86	-7894.21	1937.22	3232616.87	1237098.01	39.9812295	-104.6698973	0.00	
14820.50†	90.000	180.185	7482.50	8211.21	-7994.21	1936.90	3232617.47	1236998.02	39.9809550	-104.6698985	0.00	
14920.50†	90.000	180.185	7482.50	8309.56	-8094.21	1936.58	3232618.08	1236898.02	39.9806804	-104.6698996	0.00	
15020.50†	90.000	180.185	7482.50	8407.91	-8194.21	1936.26	3232618.68	1236798.03	39.9804059	-104.6699008	0.00	
15120.50†	90.000	180.185	7482.50	8506.26	-8294.21	1935.93	3232619.29	1236698.04	39.9801314	-104.6699020	0.00	
15220.50†	90.000	180.185	7482.50	8604.61	-8394.21	1935.61	3232619.90	1236598.04	39.9798569	-104.6699032	0.00	
15320.50†	90.000	180.185	7482.50	8702.95	-8494.21	1935.29	3232620.50	1236498.05	39.9795824	-104.6699044	0.00	
15420.50†	90.000	180.185	7482.50	8801.30	-8594.21	1934.97	3232621.11	1236398.05	39.9793079	-104.6699055	0.00	
15520.50†	90.000	180.185	7482.50	8899.65	-8694.21	1934.65	3232621.72	1236298.06	39.9790334	-104.6699067	0.00	
15620.50†	90.000	180.185	7482.50	8998.00	-8794.21	1934.32	3232622.32	1236198.06	39.9787589	-104.6699079	0.00	
15720.50†	90.000	180.185	7482.50	9096.35	-8894.21	1934.00	3232622.93	1236098.07	39.9784844	-104.6699091	0.00	
15820.50†	90.000	180.185	7482.50	9194.70	-8994.21	1933.68	3232623.53	1235998.07	39.9782099	-104.6699102	0.00	
15920.50†	90.000	180.185	7482.50	9293.05	-9094.21	1933.36	3232624.14	1235898.08	39.9779354	-104.6699114	0.00	
16020.50†	90.000	180.185	7482.50	9391.40	-9194.21	1933.04	3232624.75	1235798.08	39.9776609	-104.6699126	0.00	
16120.50†	90.000	180.185	7482.50	9489.75	-9294.20	1932.71	3232625.35	1235698.09	39.9773864	-104.6699138	0.00	
16220.50†	90.000	180.185	7482.50	9588.10	-9394.20	1932.39	3232625.96	1235598.10	39.9771118	-104.6699149	0.00	
16320.50†	90.000	180.185	7482.50	9686.45	-9494.20	1932.07	3232626.57	1235498.10	39.9768373	-104.6699161	0.00	
16420.50†	90.000	180.185	7482.50	9784.80	-9594.20	1931.75	3232627.17	1235398.11	39.9765628	-104.6699173	0.00	
16520.50†	90.000	180.185	7482.50	9883.15	-9694.20	1931.43	3232627.78	1235298.11	39.9762883	-104.6699185	0.00	
16620.50†	90.000	180.185	7482.50	9981.49	-9794.20	1931.10	3232628.38	1235198.12	39.9760138	-104.6699197	0.00	
16720.50†	90.000	180.185	7482.50	10079.84	-9894.20	1930.78	3232628.99	1235098.12	39.9757393	-104.6699208	0.00	
16820.50†	90.000	180.185	7482.50	10178.19	-9994.20	1930.46	3232629.60	1234998.13	39.9754648	-104.6699220	0.00	
16920.50†	90.000	180.185	7482.50	10276.54	-10094.20	1930.14	3232630.20	1234898.13	39.9751903	-104.6699232	0.00	
17020.50†	90.000	180.185	7482.50	10374.89	-10194.20	1929.82	3232630.81	1234798.14	39.9749158	-104.6699244	0.00	
17120.50†	90.000	180.185	7482.50	10473.24	-10294.20	1929.49	3232631.42	1234698.14	39.9746413	-104.6699255	0.00	
17220.50†	90.000	180.185	7482.50	10571.59	-10394.20	1929.17	3232632.02	1234598.15	39.9743668	-104.6699267	0.00	
17320.50†	90.000	180.185	7482.50	10669.94	-10494.20	1928.85	3232632.63	1234498.15	39.9740923	-104.6699279	0.00	
17420.50†	90.000	180.185	7482.50	10768.29	-10594.20	1928.53	3232633.23	1234398.16	39.9738177	-104.6699291	0.00	

REFERENCE WELLPATH IDENTIFICATION

Operator	CONFLUENCE RESOURCES	Well	Desha 4-3-4L
Field	WELD COUNTY (NAD83, TRUE NORTH)	API/Legal	
Facility	SEC.33-T01N-R65W	Wellbore	Desha 4-3-4L PWB
Slot	SLOT#20 Desha 4-3-4L (860'FSL & 450'FWL,SEC.33)		

WELLPATH DATA (181 stations)

MD [ft]	Inclination [°]	Azimuth [°]	TVD [ft]	Vert Sect [ft]	North [ft]	East [ft]	Grid East [US ft]	Grid North [US ft]	Latitude	Longitude	DLS [°/100ft]	Comments
17499.82	90.000	180.185	7482.50 ²	10846.30	-10673.52	1928.27	3232633.71	1234318.84	39.9736000	-104.6699300	0.00	TD

HOLE & CASING SECTIONS - Ref Wellbore: Desha 4-3-4L PWB Ref Wellpath: Desha 4-3-4L PWP Rev-A.0

String/Diameter	Start MD [ft]	End MD [ft]	Interval [ft]	Start TVD [ft]	End TVD [ft]	Start N/S [ft]	Start E/W [ft]	End N/S [ft]	End E/W [ft]
9.625in Casing Surface	20.50	1500.00	1479.50	20.50	1500.00	0.00	0.00	0.00	0.00

TARGETS

Name	MD [ft]	TVD [ft]	North [ft]	East [ft]	Grid East [US ft]	Grid North [US ft]	Latitude	Longitude	Shape
SEC.04-T01S-R65W	N/A	0.00	-174.86	2.80	3230610.94	1244798.80	40.0024200	-104.6768000	polygon
2D Polygon: dimensions not calculated									
SEC.04/09-T01S-R65W 470' SETBACK	N/A	0.00	-174.86	2.80	3230610.94	1244798.80	40.0024200	-104.6768000	polygon
2D Polygon: dimensions not calculated									
SEC.09-T01S-R65W	N/A	0.00	-174.86	2.80	3230610.94	1244798.80	40.0024200	-104.6768000	polygon
2D Polygon: dimensions not calculated									
2) Desha 4-3-4L BHL REV-1 (470'FSL & 2390'FWL,SEC.09)	17499.82	7482.50	-10673.52	1928.27	3232633.71	1234318.84	39.9736000	-104.6699300	point
1) Desha 4-3-4L LP REV-1 (470'FNL & 2390'FWL,SEC.04)	8155.82	7482.50	-1329.57	1958.37	3232577.07	1243662.33	39.9992500	-104.6698200	point

SURVEY PROGRAM - Ref Wellbore: Desha 4-3-4L PWB Ref Wellpath: Desha 4-3-4L PWP Rev-A.0

Start MD [ft]	End MD [ft]	Positional Uncertainty Model	Log Name/Comment	Wellbore
20.50	1500.00	BH NaviTrak (2019) (Axial)		Desha 4-3-4L PWB
1500.00	17499.82	BH AutoTrak Curve/eXpress (2019) (Short spacing)		Desha 4-3-4L PWB

Planned Wellpath Report

Desha 4-3-4L PWP Rev-A.0

Page 7 of 7

REFERENCE WELLPATH IDENTIFICATION

Operator	CONFLUENCE RESOURCES	Well	Desha 4-3-4L
Field	WELD COUNTY (NAD83, TRUE NORTH)	API/Legal	
Facility	SEC.33-T01N-R65W	Wellbore	Desha 4-3-4L PWB
Slot	SLOT#20 Desha 4-3-4L (860'FSL & 450'FWL,SEC.33)		

DESIGN COMMENTS

MD [ft]	Inclination [°]	Azimuth [°]	TVD [ft]	Comment
20.50	0.000	115.207	20.50	Tie On
1550.00	0.000	115.207	1550.00	End of Tangent
2646.97	21.939	115.207	2620.36	End of Build
7481.60	21.939	115.207	7104.86	KOP
8155.82	90.000	180.185	7482.50	LANDING
17499.82	90.000	180.185	7482.50	TD