

# CONFLUENCE RESOURCES

Location:	COLORADO	Slot:	SLOT#13 Desha 4-5-4L (685'FSL & 450'FWL,SEC.33)
Field:	WELD COUNTY (NAD83, TRUE NORTH)	Well:	Desha 4-5-4L
Facility:	SEC.33-T01N-R65W	Wellbore:	Desha 4-5-4L PWB
Plot reference wellpath is Desha 4-5-4L PWP RevA.0		Grid System: NAD83 / Lambert Colorado SP, Northern Zone (501), US feet	
True vertical depths are referenced to Rig (20.5) (RT)		North Reference: True north	
Reference wellpath measured depths are referenced to Rig (20.5) (RT)		Scale: True distance	
Rig (20.5) To Mean Sea Level: 5098.5 feet		Coordinates are in feet referenced to Slot	
Mean Sea Level to Mud line (At Slot: SLOT#13 Desha 4-5-4L (685'FSL & 450'FWL,SEC.33)): 0 feet		Depths are in feet	
Offset wellpath MDs are referenced to each path's default MD datum		Created by: painstr on 2020-10-07, Database: WA_Driver	

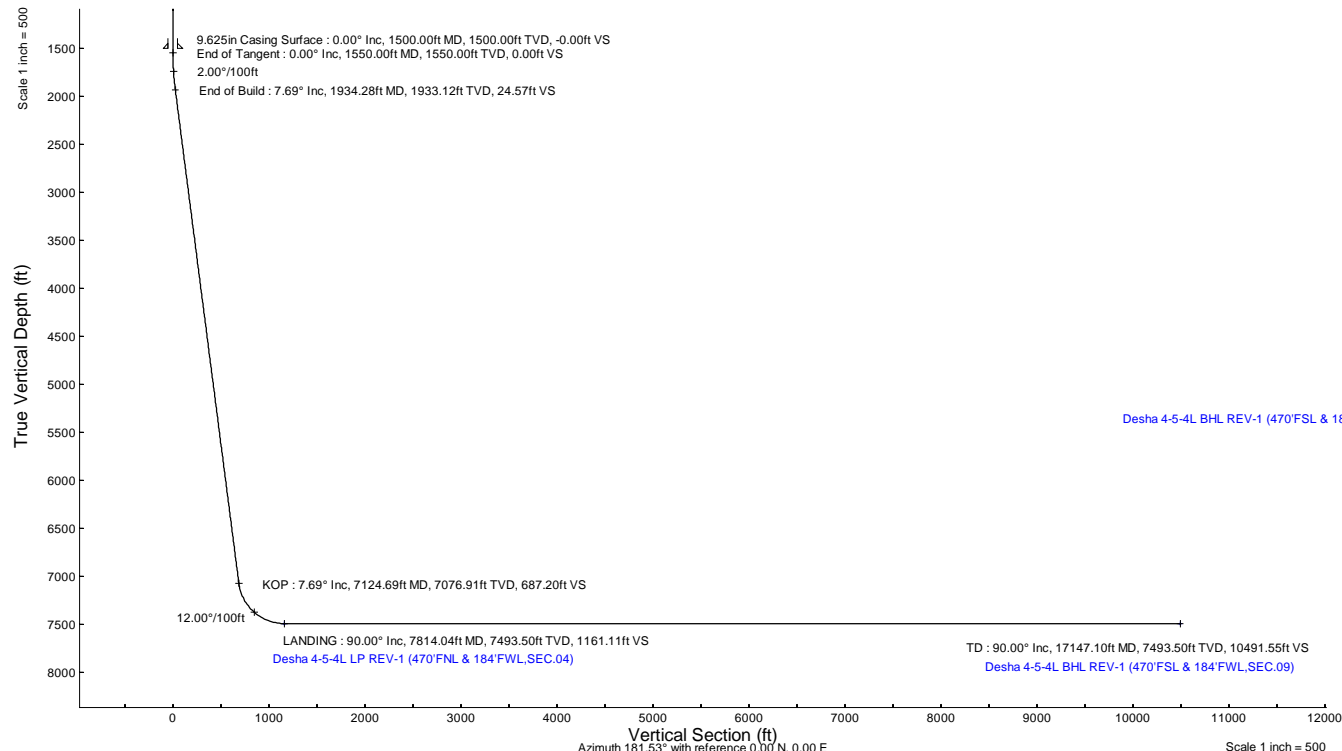
Location Information					
Facility Name		Grid East (US ft)	Grid North (US ft)	Latitude	Longitude
SEC.33-T01N-R65W		3230456.897	1245096.090	40°00'11.6640"N	104°40'38.4240"W
Slot		Grid East (US ft)	Grid North (US ft)	Latitude	Longitude
SLOT#13 Desha 4-5-4L (685'FSL & 450'FWL,SEC.33)		3230610.940	1244798.802	40°00'8.7120"N	104°40'36.4800"W
Rig (20.5) (RT) to Mud line (At Slot: SLOT#13 Desha 4-5-4L (685'FSL & 450'FWL,SEC.33))				5098.5ft	
Mean Sea Level to Mud line (At Slot: SLOT#13 Desha 4-5-4L (685'FSL & 450'FWL,SEC.33))				0ft	
Rig (20.5) (RT) to Mean Sea Level				5098.5ft	

Survey Program					
Start MD (ft)	End MD (ft)	Tool	Model	Log Name/Comment	Wellbore
20.50	1500.00	BH NavTrak (2019)	BH NavTrak (2019) (Axial)		Desha 4-5-4L PWB
1500.00	17191.28	BH AutoTrak Curve/xpress (2019)	BH AutoTrak Curve/xpress (2019) (Short spacing)		Desha 4-5-4L PWB

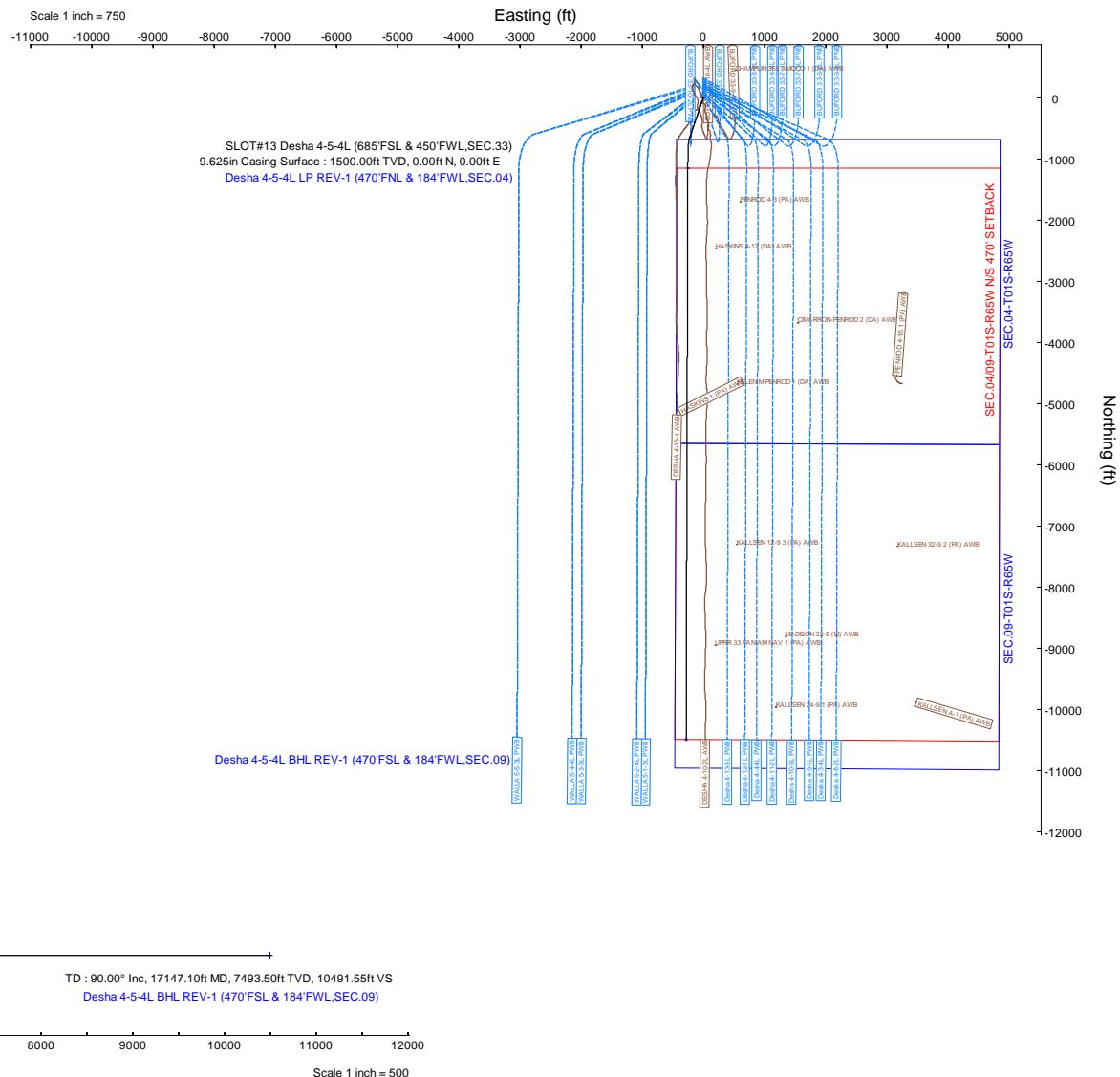
Hole and Casing Sections									
Name	Start MD (ft)	End MD (ft)	Interval (ft)	Start TVD (ft)	End TVD (ft)	Start Local N (ft)	Start Local E (ft)	End Local N (ft)	End Local E (ft)
9.625in Casing Surface	20.50	1500.00	1479.50	20.50	1500.00	0.00	0.00	0.00	0.00

Bottom Hole Location									
MD (ft)	Inc (°)	Az (°)	TVD (ft)	Local N (ft)	Local E (ft)	Grid East (US ft)	Grid North (US ft)	Latitude	Longitude
17147.10	90.000	180.173	7493.50	-10487.81	-280.27	3230428.05	1234309.22	39°58'25.0680"N	104°40'40.0800"W

Targets									
Name	MD (ft)	TVD (ft)	Local N (ft)	Local E (ft)	Grid East (US ft)	Grid North (US ft)	Latitude	Longitude	
SEC.04-T01S-R65W	N/A	0.00	0.00	0.00	3230610.94	1244798.80	40°00'8.7120"N	104°40'36.4800"W	
SEC.0409-T01S-R65W 470' SETBACK	N/A	0.00	0.00	0.00	3230610.94	1244798.80	40°00'8.7120"N	104°40'36.4800"W	
SEC.0409-T01S-R65W N/S 470' SETBACK	N/A	0.00	0.00	0.00	3230610.94	1244798.80	40°00'8.7120"N	104°40'36.4800"W	
SEC.09-T01S-R65W	N/A	0.00	0.00	0.00	3230610.94	1244798.80	40°00'8.7120"N	104°40'36.4800"W	
Desha 4-5-4L BHL REV-1 (470'FSL & 184'FWL,SEC.09)	17147.10	7493.50	-10487.81	-280.27	3230428.05	1234309.22	39°58'25.0680"N	104°40'40.0800"W	
Desha 4-5-4L LP REV-1 (470'FNL & 184'FWL,SEC.04)	7814.04	7493.50	-1154.79	-252.15	3230369.53	1243641.76	39°59'57.3000"N	104°40'38.7200"W	



Well Profile Data								
Design Comment	MD (ft)	Inc (°)	Az (°)	TVD (ft)	Local N (ft)	Local E (ft)	DLS (°/100ft)	VS (ft)
Tie On	20.50	0.000	198.860	20.50	0.00	0.00	0.00	0.00
End of Tangent	1550.00	0.000	198.860	1550.00	0.00	0.00	0.00	0.00
End of Build	1934.28	7.686	198.860	1933.12	-24.35	-8.32	2.00	24.57
KOP	7124.69	7.686	198.860	7076.91	-681.23	-232.71	0.00	687.20
LANDING	7814.04	90.000	180.173	7493.50	-1154.79	-252.15	12.00	1161.11
TD	17147.10	90.000	180.173	7493.50	-10487.81	-280.27	0.00	10491.55







# Planned Wellpath Report

Desha 4-5-4L PWP Rev-A.0

Page 1 of 7



## REFERENCE WELLPATH IDENTIFICATION

Operator	CONFLUENCE RESOURCES	Well	Desha 4-5-4L
Field	WELD COUNTY (NAD83, TRUE NORTH)	API/Legal	
Facility	SEC.33-T01N-R65W	Wellbore	Desha 4-5-4L PWB
Slot	SLOT#13 Desha 4-5-4L (685'FSL & 450'FWL,SEC.33)		

## REPORT SETUP INFORMATION

Projection System	NAD83 / Lambert Colorado SP, Northern Zone (501), US feet	Software System	WellArchitect® 6.0
North Reference	True	User	Painsetr
Scale	0.999966	Report Generated	10/7/2020 at 10:17:44 AM
Convergence at slot	0.53° East	Database	WA_Denver

## WELLPATH LOCATION

	Local coordinates		Grid coordinates		Geographic coordinates	
	North[ft]	East[ft]	Easting[US ft]	Northing[US ft]	Latitude	Longitude
Slot Location	-298.71	151.28	3230610.94	1244798.80	40.0024200°	-104.6768000°
Facility Reference Pt			3230456.90	1245096.09	40.0032400°	-104.6773400°
Field Reference Pt			3230456.90	1245096.09	40.0032400°	-104.6773400°

## WELLPATH DATUM

Calculation method	Minimum curvature	Rig (20.5') (RT) to Facility Vertical Datum	5098.50ft
Horizontal Reference Pt	Slot	Rig (20.5') (RT) to Mean Sea Level	5098.50ft
Vertical Reference Pt	Rig (20.5') (RT)	Rig (20.5') (RT) to Mud Line at Slot (SLOT#13 Desha 4-5-4L (685'FSL & 450'FWL,SEC.33))	5098.50ft
MD Reference Pt	Rig (20.5') (RT)	Section Origin	N 0.00, E 0.00 ft
Field Vertical Reference	Mean Sea Level	Section Azimuth	181.53°



# Planned Wellpath Report

Desha 4-5-4L PWP Rev-A.0

Page 2 of 7

## REFERENCE WELLPATH IDENTIFICATION

Operator	CONFLUENCE RESOURCES	Well	Desha 4-5-4L
Field	WELD COUNTY (NAD83, TRUE NORTH)	API/Legal	
Facility	SEC.33-T01N-R65W	Wellbore	Desha 4-5-4L PWB
Slot	SLOT#13 Desha 4-5-4L (685'FSL & 450'FWL,SEC.33)		

## WELLPATH DATA (178 stations) † = interpolated, ‡ = extrapolated station

MD [ft]	Inclination [°]	Azimuth [°]	TVD [ft]	Vert Sect [ft]	North [ft]	East [ft]	Grid East [US ft]	Grid North [US ft]	Latitude	Longitude	DLS [°/100ft]	Comments
0.00†	0.000	198.860	0.00	0.00	0.00	0.00	3230610.94	1244798.80	40.0024200	-104.6768000	0.00	
20.50	0.000	198.860	20.50	0.00	0.00	0.00	3230610.94	1244798.80	40.0024200	-104.6768000	0.00	Tie On
120.50†	0.000	198.860	120.50	0.00	0.00	0.00	3230610.94	1244798.80	40.0024200	-104.6768000	0.00	
220.50†	0.000	198.860	220.50	0.00	0.00	0.00	3230610.94	1244798.80	40.0024200	-104.6768000	0.00	
320.50†	0.000	198.860	320.50	0.00	0.00	0.00	3230610.94	1244798.80	40.0024200	-104.6768000	0.00	
420.50†	0.000	198.860	420.50	0.00	0.00	0.00	3230610.94	1244798.80	40.0024200	-104.6768000	0.00	
520.50†	0.000	198.860	520.50	0.00	0.00	0.00	3230610.94	1244798.80	40.0024200	-104.6768000	0.00	
620.50†	0.000	198.860	620.50	0.00	0.00	0.00	3230610.94	1244798.80	40.0024200	-104.6768000	0.00	
720.50†	0.000	198.860	720.50	0.00	0.00	0.00	3230610.94	1244798.80	40.0024200	-104.6768000	0.00	
820.50†	0.000	198.860	820.50	0.00	0.00	0.00	3230610.94	1244798.80	40.0024200	-104.6768000	0.00	
920.50†	0.000	198.860	920.50	0.00	0.00	0.00	3230610.94	1244798.80	40.0024200	-104.6768000	0.00	
1020.50†	0.000	198.860	1020.50	0.00	0.00	0.00	3230610.94	1244798.80	40.0024200	-104.6768000	0.00	
1120.50†	0.000	198.860	1120.50	0.00	0.00	0.00	3230610.94	1244798.80	40.0024200	-104.6768000	0.00	
1220.50†	0.000	198.860	1220.50	0.00	0.00	0.00	3230610.94	1244798.80	40.0024200	-104.6768000	0.00	
1320.50†	0.000	198.860	1320.50	0.00	0.00	0.00	3230610.94	1244798.80	40.0024200	-104.6768000	0.00	
1420.50†	0.000	198.860	1420.50	0.00	0.00	0.00	3230610.94	1244798.80	40.0024200	-104.6768000	0.00	
1520.50†	0.000	198.860	1520.50	0.00	0.00	0.00	3230610.94	1244798.80	40.0024200	-104.6768000	0.00	
1550.00	0.000	198.860	1550.00	0.00	0.00	0.00	3230610.94	1244798.80	40.0024200	-104.6768000	0.00	End of Tangent
1620.50†	1.410	198.860	1620.49	0.83	-0.82	-0.28	3230610.67	1244797.98	40.0024177	-104.6768010	2.00	
1720.50†	3.410	198.860	1720.40	4.84	-4.80	-1.64	3230609.34	1244793.99	40.0024068	-104.6768059	2.00	
1820.50†	5.410	198.860	1820.10	12.18	-12.08	-4.13	3230606.93	1244786.69	40.0023869	-104.6768147	2.00	
1920.50†	7.410	198.860	1919.47	22.84	-22.64	-7.73	3230603.42	1244776.09	40.0023579	-104.6768276	2.00	
1934.28	7.686	198.860	1933.12	24.57	-24.35	-8.32	3230602.85	1244774.37	40.0023531	-104.6768297	2.00	End of Build
2020.50†	7.686	198.860	2018.57	35.57	-35.26	-12.05	3230599.22	1244763.43	40.0023232	-104.6768430	0.00	
2120.50†	7.686	198.860	2117.68	48.34	-47.92	-16.37	3230595.02	1244750.73	40.0022885	-104.6768584	0.00	
2220.50†	7.686	198.860	2216.78	61.11	-60.58	-20.69	3230590.81	1244738.04	40.0022537	-104.6768739	0.00	
2320.50†	7.686	198.860	2315.88	73.87	-73.23	-25.02	3230586.61	1244725.34	40.0022190	-104.6768893	0.00	
2420.50†	7.686	198.860	2414.98	86.64	-85.89	-29.34	3230582.40	1244712.65	40.0021842	-104.6769047	0.00	
2520.50†	7.686	198.860	2514.08	99.41	-98.54	-33.66	3230578.19	1244699.95	40.0021495	-104.6769202	0.00	
2620.50†	7.686	198.860	2613.18	112.17	-111.20	-37.99	3230573.99	1244687.26	40.0021148	-104.6769356	0.00	
2720.50†	7.686	198.860	2712.29	124.94	-123.85	-42.31	3230569.78	1244674.57	40.0020800	-104.6769510	0.00	
2820.50†	7.686	198.860	2811.39	137.71	-136.51	-46.63	3230565.58	1244661.87	40.0020453	-104.6769665	0.00	
2920.50†	7.686	198.860	2910.49	150.47	-149.16	-50.96	3230561.37	1244649.18	40.0020105	-104.6769819	0.00	
3020.50†	7.686	198.860	3009.59	163.24	-161.82	-55.28	3230557.17	1244636.48	40.0019758	-104.6769973	0.00	
3120.50†	7.686	198.860	3108.69	176.01	-174.48	-59.60	3230552.96	1244623.79	40.0019410	-104.6770127	0.00	
3220.50†	7.686	198.860	3207.79	188.77	-187.13	-63.92	3230548.76	1244611.09	40.0019063	-104.6770282	0.00	
3320.50†	7.686	198.860	3306.90	201.54	-199.79	-68.25	3230544.55	1244598.40	40.0018716	-104.6770436	0.00	
3420.50†	7.686	198.860	3406.00	214.31	-212.44	-72.57	3230540.35	1244585.70	40.0018368	-104.6770590	0.00	
3520.50†	7.686	198.860	3505.10	227.07	-225.10	-76.89	3230536.14	1244573.01	40.0018021	-104.6770745	0.00	
3620.50†	7.686	198.860	3604.20	239.84	-237.75	-81.22	3230531.94	1244560.31	40.0017673	-104.6770899	0.00	
3720.50†	7.686	198.860	3703.30	252.60	-250.41	-85.54	3230527.73	1244547.62	40.0017326	-104.6771053	0.00	
3820.50†	7.686	198.860	3802.40	265.37	-263.06	-89.86	3230523.52	1244534.92	40.0016979	-104.6771208	0.00	
3920.50†	7.686	198.860	3901.51	278.14	-275.72	-94.19	3230519.32	1244522.23	40.0016631	-104.6771362	0.00	
4020.50†	7.686	198.860	4000.61	290.90	-288.38	-98.51	3230515.11	1244509.53	40.0016284	-104.6771516	0.00	
4120.50†	7.686	198.860	4099.71	303.67	-301.03	-102.83	3230510.91	1244496.84	40.0015936	-104.6771671	0.00	



# Planned Wellpath Report

Desha 4-5-4L PWP Rev-A.0

Page 3 of 7

## REFERENCE WELLPATH IDENTIFICATION

Operator	CONFLUENCE RESOURCES	Well	Desha 4-5-4L
Field	WELD COUNTY (NAD83, TRUE NORTH)	API/Legal	
Facility	SEC.33-T01N-R65W	Wellbore	Desha 4-5-4L PWB
Slot	SLOT#13 Desha 4-5-4L (685'FSL & 450'FWL,SEC.33)		

## WELLPATH DATA (178 stations) † = interpolated, ‡ = extrapolated station

MD [ft]	Inclination [°]	Azimuth [°]	TVD [ft]	Vert Sect [ft]	North [ft]	East [ft]	Grid East [US ft]	Grid North [US ft]	Latitude	Longitude	DLS [°/100ft]	Comments
4220.50†	7.686	198.860	4198.81	316.44	-313.69	-107.16	3230506.70	1244484.15	40.0015589	-104.6771825	0.00	
4320.50†	7.686	198.860	4297.91	329.20	-326.34	-111.48	3230502.50	1244471.45	40.0015242	-104.6771979	0.00	
4420.50†	7.686	198.860	4397.01	341.97	-339.00	-115.80	3230498.29	1244458.76	40.0014894	-104.6772134	0.00	
4520.50†	7.686	198.860	4496.12	354.74	-351.65	-120.13	3230494.09	1244446.06	40.0014547	-104.6772288	0.00	
4620.50†	7.686	198.860	4595.22	367.50	-364.31	-124.45	3230489.88	1244433.37	40.0014199	-104.6772442	0.00	
4720.50†	7.686	198.860	4694.32	380.27	-376.96	-128.77	3230485.68	1244420.67	40.0013852	-104.6772596	0.00	
4820.50†	7.686	198.860	4793.42	393.04	-389.62	-133.10	3230481.47	1244407.98	40.0013505	-104.6772751	0.00	
4920.50†	7.686	198.860	4892.52	405.80	-402.28	-137.42	3230477.27	1244395.28	40.0013157	-104.6772905	0.00	
5020.50†	7.686	198.860	4991.63	418.57	-414.93	-141.74	3230473.06	1244382.59	40.0012810	-104.6773059	0.00	
5120.50†	7.686	198.860	5090.73	431.34	-427.59	-146.07	3230468.85	1244369.89	40.0012462	-104.6773214	0.00	
5220.50†	7.686	198.860	5189.83	444.10	-440.24	-150.39	3230464.65	1244357.20	40.0012115	-104.6773368	0.00	
5320.50†	7.686	198.860	5288.93	456.87	-452.90	-154.71	3230460.44	1244344.50	40.0011768	-104.6773522	0.00	
5420.50†	7.686	198.860	5388.03	469.64	-465.55	-159.03	3230456.24	1244331.81	40.0011420	-104.6773677	0.00	
5520.50†	7.686	198.860	5487.13	482.40	-478.21	-163.36	3230452.03	1244319.11	40.0011073	-104.6773831	0.00	
5620.50†	7.686	198.860	5586.24	495.17	-490.86	-167.68	3230447.83	1244306.42	40.0010725	-104.6773985	0.00	
5720.50†	7.686	198.860	5685.34	507.93	-503.52	-172.00	3230443.62	1244293.73	40.0010378	-104.6774140	0.00	
5820.50†	7.686	198.860	5784.44	520.70	-516.17	-176.33	3230439.42	1244281.03	40.0010031	-104.6774294	0.00	
5920.50†	7.686	198.860	5883.54	533.47	-528.83	-180.65	3230435.21	1244268.34	40.0009683	-104.6774448	0.00	
6020.50†	7.686	198.860	5982.64	546.23	-541.49	-184.97	3230431.01	1244255.64	40.0009336	-104.6774602	0.00	
6120.50†	7.686	198.860	6081.74	559.00	-554.14	-189.30	3230426.80	1244242.95	40.0008988	-104.6774757	0.00	
6220.50†	7.686	198.860	6180.85	571.77	-566.80	-193.62	3230422.60	1244230.25	40.0008641	-104.6774911	0.00	
6320.50†	7.686	198.860	6279.95	584.53	-579.45	-197.94	3230418.39	1244217.56	40.0008293	-104.6775065	0.00	
6420.50†	7.686	198.860	6379.05	597.30	-592.11	-202.27	3230414.19	1244204.86	40.0007946	-104.6775220	0.00	
6520.50†	7.686	198.860	6478.15	610.07	-604.76	-206.59	3230409.98	1244192.17	40.0007599	-104.6775374	0.00	
6620.50†	7.686	198.860	6577.25	622.83	-617.42	-210.91	3230405.77	1244179.47	40.0007251	-104.6775528	0.00	
6720.50†	7.686	198.860	6676.35	635.60	-630.07	-215.24	3230401.57	1244166.78	40.0006904	-104.6775683	0.00	
6820.50†	7.686	198.860	6775.46	648.37	-642.73	-219.56	3230397.36	1244154.08	40.0006556	-104.6775837	0.00	
6920.50†	7.686	198.860	6874.56	661.13	-655.39	-223.88	3230393.16	1244141.39	40.0006209	-104.6775991	0.00	
7020.50†	7.686	198.860	6973.66	673.90	-668.04	-228.21	3230388.95	1244128.69	40.0005862	-104.6776146	0.00	
7120.50†	7.686	198.860	7072.76	686.67	-680.70	-232.53	3230384.75	1244116.00	40.0005514	-104.6776300	0.00	
7124.69	7.686	198.860	7076.91	687.20	-681.23	-232.71	3230384.57	1244115.47	40.0005500	-104.6776306	0.00	KOP
7220.50†	18.932	187.415	7170.01	708.85	-702.77	-236.80	3230380.68	1244093.88	40.0004908	-104.6776452	12.00	
7320.50†	30.865	184.321	7260.56	750.76	-744.59	-240.84	3230377.03	1244052.03	40.0003760	-104.6776597	12.00	
7420.50†	42.833	182.846	7340.44	810.58	-804.34	-244.48	3230373.95	1243992.26	40.0002120	-104.6776726	12.00	
7520.50†	54.813	181.920	7406.16	885.71	-879.41	-247.54	3230371.58	1243917.17	40.0000059	-104.6776836	12.00	
7620.50†	66.798	181.235	7454.85	972.84	-966.51	-249.91	3230370.02	1243830.05	39.9997668	-104.6776920	12.00	
7720.50†	78.786	180.664	7484.38	1068.19	-1061.85	-251.48	3230369.34	1243734.70	39.9995051	-104.6776976	12.00	
7814.04	90.000	180.173	7493.50†	1161.11	-1154.79	-252.15	3230369.53	1243641.76	39.9992500	-104.6777000	12.00	LANDING
7820.50†	90.000	180.173	7493.50	1167.57	-1161.25	-252.17	3230369.57	1243635.30	39.9992323	-104.6777001	0.00	
7920.50†	90.000	180.173	7493.50	1267.54	-1261.25	-252.47	3230370.20	1243535.31	39.9989578	-104.6777011	0.00	
8020.50†	90.000	180.173	7493.50	1367.52	-1361.25	-252.77	3230370.82	1243435.31	39.9986832	-104.6777022	0.00	
8120.50†	90.000	180.173	7493.50	1467.49	-1461.25	-253.07	3230371.45	1243335.32	39.9984087	-104.6777033	0.00	
8220.50†	90.000	180.173	7493.50	1567.46	-1561.25	-253.37	3230372.08	1243235.32	39.9981342	-104.6777044	0.00	
8320.50†	90.000	180.173	7493.50	1667.43	-1661.25	-253.68	3230372.70	1243135.33	39.9978597	-104.6777054	0.00	
8420.50†	90.000	180.173	7493.50	1767.40	-1761.25	-253.98	3230373.33	1243035.34	39.9975852	-104.6777065	0.00	



# Planned Wellpath Report

Desha 4-5-4L PWP Rev-A.0

Page 4 of 7

REFERENCE WELLPATH IDENTIFICATION			
Operator	CONFLUENCE RESOURCES	Well	Desha 4-5-4L
Field	WELD COUNTY (NAD83, TRUE NORTH)	API/Legal	
Facility	SEC.33-T01N-R65W	Wellbore	Desha 4-5-4L PWB
Slot	SLOT#13 Desha 4-5-4L (685'FSL & 450'FWL,SEC.33)		

## WELLPATH DATA (178 stations) † = interpolated, ‡ = extrapolated station

MD [ft]	Inclination [°]	Azimuth [°]	TVD [ft]	Vert Sect [ft]	North [ft]	East [ft]	Grid East [US ft]	Grid North [US ft]	Latitude	Longitude	DLS [°/100ft]	Comments
8520.50†	90.000	180.173	7493.50	1867.38	-1861.25	-254.28	3230373.96	1242935.34	39.9973107	-104.6777076	0.00	
8620.50†	90.000	180.173	7493.50	1967.35	-1961.25	-254.58	3230374.59	1242835.35	39.9970362	-104.6777086	0.00	
8720.50†	90.000	180.173	7493.50	2067.32	-2061.25	-254.88	3230375.21	1242735.35	39.9967617	-104.6777097	0.00	
8820.50†	90.000	180.173	7493.50	2167.29	-2161.25	-255.18	3230375.84	1242635.36	39.9964872	-104.6777108	0.00	
8920.50†	90.000	180.173	7493.50	2267.26	-2261.25	-255.48	3230376.47	1242535.36	39.9962127	-104.6777119	0.00	
9020.50†	90.000	180.173	7493.50	2367.24	-2361.24	-255.79	3230377.09	1242435.37	39.9959382	-104.6777129	0.00	
9120.50†	90.000	180.173	7493.50	2467.21	-2461.24	-256.09	3230377.72	1242335.37	39.9956637	-104.6777140	0.00	
9220.50†	90.000	180.173	7493.50	2567.18	-2561.24	-256.39	3230378.35	1242235.38	39.9953892	-104.6777151	0.00	
9320.50†	90.000	180.173	7493.50	2667.15	-2661.24	-256.69	3230378.97	1242135.39	39.9951146	-104.6777161	0.00	
9420.50†	90.000	180.173	7493.50	2767.12	-2761.24	-256.99	3230379.60	1242035.39	39.9948401	-104.6777172	0.00	
9520.50†	90.000	180.173	7493.50	2867.09	-2861.24	-257.29	3230380.23	1241935.40	39.9945656	-104.6777183	0.00	
9620.50†	90.000	180.173	7493.50	2967.07	-2961.24	-257.59	3230380.86	1241835.40	39.9942911	-104.6777194	0.00	
9720.50†	90.000	180.173	7493.50	3067.04	-3061.24	-257.89	3230381.48	1241735.41	39.9940166	-104.6777204	0.00	
9820.50†	90.000	180.173	7493.50	3167.01	-3161.24	-258.20	3230382.11	1241635.41	39.9937421	-104.6777215	0.00	
9920.50†	90.000	180.173	7493.50	3266.98	-3261.24	-258.50	3230382.74	1241535.42	39.9934676	-104.6777226	0.00	
10020.50†	90.000	180.173	7493.50	3366.95	-3361.24	-258.80	3230383.36	1241435.42	39.9931931	-104.6777236	0.00	
10120.50†	90.000	180.173	7493.50	3466.93	-3461.24	-259.10	3230383.99	1241335.43	39.9929186	-104.6777247	0.00	
10220.50†	90.000	180.173	7493.50	3566.90	-3561.24	-259.40	3230384.62	1241235.44	39.9926441	-104.6777258	0.00	
10320.50†	90.000	180.173	7493.50	3666.87	-3661.24	-259.70	3230385.24	1241135.44	39.9923696	-104.6777269	0.00	
10420.50†	90.000	180.173	7493.50	3766.84	-3761.24	-260.00	3230385.87	1241035.45	39.9920951	-104.6777279	0.00	
10520.50†	90.000	180.173	7493.50	3866.81	-3861.24	-260.31	3230386.50	1240935.45	39.9918206	-104.6777290	0.00	
10620.50†	90.000	180.173	7493.50	3966.79	-3961.24	-260.61	3230387.13	1240835.46	39.9915460	-104.6777301	0.00	
10720.50†	90.000	180.173	7493.50	4066.76	-4061.24	-260.91	3230387.75	1240735.46	39.9912715	-104.6777311	0.00	
10820.50†	90.000	180.173	7493.50	4166.73	-4161.24	-261.21	3230388.38	1240635.47	39.9909970	-104.6777322	0.00	
10920.50†	90.000	180.173	7493.50	4266.70	-4261.24	-261.51	3230389.01	1240535.47	39.9907225	-104.6777333	0.00	
11020.50†	90.000	180.173	7493.50	4366.67	-4361.24	-261.81	3230389.63	1240435.48	39.9904480	-104.6777344	0.00	
11120.50†	90.000	180.173	7493.50	4466.65	-4461.24	-262.11	3230390.26	1240335.49	39.9901735	-104.6777354	0.00	
11220.50†	90.000	180.173	7493.50	4566.62	-4561.23	-262.41	3230390.89	1240235.49	39.9898990	-104.6777365	0.00	
11320.50†	90.000	180.173	7493.50	4666.59	-4661.23	-262.72	3230391.51	1240135.50	39.9896245	-104.6777376	0.00	
11420.50†	90.000	180.173	7493.50	4766.56	-4761.23	-263.02	3230392.14	1240035.50	39.9893500	-104.6777387	0.00	
11520.50†	90.000	180.173	7493.50	4866.53	-4861.23	-263.32	3230392.77	1239935.51	39.9890755	-104.6777397	0.00	
11620.50†	90.000	180.173	7493.50	4966.50	-4961.23	-263.62	3230393.40	1239835.51	39.9888010	-104.6777408	0.00	
11720.50†	90.000	180.173	7493.50	5066.48	-5061.23	-263.92	3230394.02	1239735.52	39.9885265	-104.6777419	0.00	
11820.50†	90.000	180.173	7493.50	5166.45	-5161.23	-264.22	3230394.65	1239635.52	39.9882519	-104.6777429	0.00	
11920.50†	90.000	180.173	7493.50	5266.42	-5261.23	-264.52	3230395.28	1239535.53	39.9879774	-104.6777440	0.00	
12020.50†	90.000	180.173	7493.50	5366.39	-5361.23	-264.82	3230395.90	1239435.54	39.9877029	-104.6777451	0.00	
12120.50†	90.000	180.173	7493.50	5466.36	-5461.23	-265.13	3230396.53	1239335.54	39.9874284	-104.6777462	0.00	
12220.50†	90.000	180.173	7493.50	5566.34	-5561.23	-265.43	3230397.16	1239235.55	39.9871539	-104.6777472	0.00	
12320.50†	90.000	180.173	7493.50	5666.31	-5661.23	-265.73	3230397.78	1239135.55	39.9868794	-104.6777483	0.00	
12420.50†	90.000	180.173	7493.50	5766.28	-5761.23	-266.03	3230398.41	1239035.56	39.9866049	-104.6777494	0.00	
12520.50†	90.000	180.173	7493.50	5866.25	-5861.23	-266.33	3230399.04	1238935.56	39.9863304	-104.6777504	0.00	
12620.50†	90.000	180.173	7493.50	5966.22	-5961.23	-266.63	3230399.67	1238835.57	39.9860559	-104.6777515	0.00	
12720.50†	90.000	180.173	7493.50	6066.20	-6061.23	-266.93	3230400.29	1238735.57	39.9857814	-104.6777526	0.00	
12820.50†	90.000	180.173	7493.50	6166.17	-6161.23	-267.24	3230400.92	1238635.58	39.9855069	-104.6777537	0.00	
12920.50†	90.000	180.173	7493.50	6266.14	-6261.23	-267.54	3230401.55	1238535.59	39.9852324	-104.6777547	0.00	



# Planned Wellpath Report

Desha 4-5-4L PWP Rev-A.0

Page 5 of 7

## REFERENCE WELLPATH IDENTIFICATION

Operator	CONFLUENCE RESOURCES	Well	Desha 4-5-4L
Field	WELD COUNTY (NAD83, TRUE NORTH)	API/Legal	
Facility	SEC.33-T01N-R65W	Wellbore	Desha 4-5-4L PWB
Slot	SLOT#13 Desha 4-5-4L (685'FSL & 450'FWL,SEC.33)		

## WELLPATH DATA (178 stations) † = interpolated, ‡ = extrapolated station

MD [ft]	Inclination [°]	Azimuth [°]	TVD [ft]	Vert Sect [ft]	North [ft]	East [ft]	Grid East [US ft]	Grid North [US ft]	Latitude	Longitude	DLS [°/100ft]	Comments
13020.50†	90.000	180.173	7493.50	6366.11	-6361.23	-267.84	3230402.17	1238435.59	39.9849579	-104.6777558	0.00	
13120.50†	90.000	180.173	7493.50	6466.08	-6461.23	-268.14	3230402.80	1238335.60	39.9846833	-104.6777569	0.00	
13220.50†	90.000	180.173	7493.50	6566.06	-6561.23	-268.44	3230403.43	1238235.60	39.9844088	-104.6777579	0.00	
13320.50†	90.000	180.173	7493.50	6666.03	-6661.23	-268.74	3230404.05	1238135.61	39.9841343	-104.6777590	0.00	
13420.50†	90.000	180.173	7493.50	6766.00	-6761.22	-269.04	3230404.68	1238035.61	39.9838598	-104.6777601	0.00	
13520.50†	90.000	180.173	7493.50	6865.97	-6861.22	-269.34	3230405.31	1237935.62	39.9835853	-104.6777612	0.00	
13620.50†	90.000	180.173	7493.50	6965.94	-6961.22	-269.65	3230405.94	1237835.62	39.9833108	-104.6777622	0.00	
13720.50†	90.000	180.173	7493.50	7065.91	-7061.22	-269.95	3230406.56	1237735.63	39.9830363	-104.6777633	0.00	
13820.50†	90.000	180.173	7493.50	7165.89	-7161.22	-270.25	3230407.19	1237635.64	39.9827618	-104.6777644	0.00	
13920.50†	90.000	180.173	7493.50	7265.86	-7261.22	-270.55	3230407.82	1237535.64	39.9824873	-104.6777654	0.00	
14020.50†	90.000	180.173	7493.50	7365.83	-7361.22	-270.85	3230408.44	1237435.65	39.9822128	-104.6777665	0.00	
14120.50†	90.000	180.173	7493.50	7465.80	-7461.22	-271.15	3230409.07	1237335.65	39.9819383	-104.6777676	0.00	
14220.50†	90.000	180.173	7493.50	7565.77	-7561.22	-271.45	3230409.70	1237235.66	39.9816638	-104.6777687	0.00	
14320.50†	90.000	180.173	7493.50	7665.75	-7661.22	-271.75	3230410.32	1237135.66	39.9813892	-104.6777697	0.00	
14420.50†	90.000	180.173	7493.50	7765.72	-7761.22	-272.06	3230410.95	1237035.67	39.9811147	-104.6777708	0.00	
14520.50†	90.000	180.173	7493.50	7865.69	-7861.22	-272.36	3230411.58	1236935.67	39.9808402	-104.6777719	0.00	
14620.50†	90.000	180.173	7493.50	7965.66	-7961.22	-272.66	3230412.21	1236835.68	39.9805657	-104.6777729	0.00	
14720.50†	90.000	180.173	7493.50	8065.63	-8061.22	-272.96	3230412.83	1236735.69	39.9802912	-104.6777740	0.00	
14820.50†	90.000	180.173	7493.50	8165.61	-8161.22	-273.26	3230413.46	1236635.69	39.9800167	-104.6777751	0.00	
14920.50†	90.000	180.173	7493.50	8265.58	-8261.22	-273.56	3230414.09	1236535.70	39.9797422	-104.6777761	0.00	
15020.50†	90.000	180.173	7493.50	8365.55	-8361.22	-273.86	3230414.71	1236435.70	39.9794677	-104.6777772	0.00	
15120.50†	90.000	180.173	7493.50	8465.52	-8461.22	-274.17	3230415.34	1236335.71	39.9791932	-104.6777783	0.00	
15220.50†	90.000	180.173	7493.50	8565.49	-8561.22	-274.47	3230415.97	1236235.71	39.9789187	-104.6777794	0.00	
15320.50†	90.000	180.173	7493.50	8665.47	-8661.22	-274.77	3230416.59	1236135.72	39.9786442	-104.6777804	0.00	
15420.50†	90.000	180.173	7493.50	8765.44	-8761.22	-275.07	3230417.22	1236035.72	39.9783697	-104.6777815	0.00	
15520.50†	90.000	180.173	7493.50	8865.41	-8861.22	-275.37	3230417.85	1235935.73	39.9780951	-104.6777826	0.00	
15620.50†	90.000	180.173	7493.50	8965.38	-8961.21	-275.67	3230418.48	1235835.73	39.9778206	-104.6777836	0.00	
15720.50†	90.000	180.173	7493.50	9065.35	-9061.21	-275.97	3230419.10	1235735.74	39.9775461	-104.6777847	0.00	
15820.50†	90.000	180.173	7493.50	9165.32	-9161.21	-276.27	3230419.73	1235635.75	39.9772716	-104.6777858	0.00	
15920.50†	90.000	180.173	7493.50	9265.30	-9261.21	-276.58	3230420.36	1235535.75	39.9769971	-104.6777869	0.00	
16020.50†	90.000	180.173	7493.50	9365.27	-9361.21	-276.88	3230420.98	1235435.76	39.9767226	-104.6777879	0.00	
16120.50†	90.000	180.173	7493.50	9465.24	-9461.21	-277.18	3230421.61	1235335.76	39.9764481	-104.6777890	0.00	
16220.50†	90.000	180.173	7493.50	9565.21	-9561.21	-277.48	3230422.24	1235235.77	39.9761736	-104.6777901	0.00	
16320.50†	90.000	180.173	7493.50	9665.18	-9661.21	-277.78	3230422.86	1235135.77	39.9758991	-104.6777911	0.00	
16420.50†	90.000	180.173	7493.50	9765.16	-9761.21	-278.08	3230423.49	1235035.78	39.9756246	-104.6777922	0.00	
16520.50†	90.000	180.173	7493.50	9865.13	-9861.21	-278.38	3230424.12	1234935.78	39.9753501	-104.6777933	0.00	
16620.50†	90.000	180.173	7493.50	9965.10	-9961.21	-278.69	3230424.75	1234835.79	39.9750756	-104.6777944	0.00	
16720.50†	90.000	180.173	7493.50	10065.07	-10061.21	-278.99	3230425.37	1234735.80	39.9748010	-104.6777954	0.00	
16820.50†	90.000	180.173	7493.50	10165.04	-10161.21	-279.29	3230426.00	1234635.80	39.9745265	-104.6777965	0.00	
16920.50†	90.000	180.173	7493.50	10265.02	-10261.21	-279.59	3230426.63	1234535.81	39.9742520	-104.6777976	0.00	
17020.50†	90.000	180.173	7493.50	10364.99	-10361.21	-279.89	3230427.25	1234435.81	39.9739775	-104.6777986	0.00	
17120.50†	90.000	180.173	7493.50	10464.96	-10461.21	-280.19	3230427.88	1234335.82	39.9737030	-104.6777997	0.00	
17147.10	90.000	180.173	7493.50 <sup>2</sup>	10491.55	-10487.81	-280.27	3230428.05	1234309.22	39.9736300	-104.6778000	0.00	TD



# Planned Wellpath Report

Desha 4-5-4L PWP Rev-A.0

Page 6 of 7

## REFERENCE WELLPATH IDENTIFICATION

Operator	CONFLUENCE RESOURCES	Well	Desha 4-5-4L
Field	WELD COUNTY (NAD83, TRUE NORTH)	API/Legal	
Facility	SEC.33-T01N-R65W	Wellbore	Desha 4-5-4L PWB
Slot	SLOT#13 Desha 4-5-4L (685'FSL & 450'FWL,SEC.33)		

## HOLE & CASING SECTIONS - Ref Wellbore: Desha 4-5-4L PWB Ref Wellpath: Desha 4-5-4L PWP Rev-A.0

String/Diameter	Start MD [ft]	End MD [ft]	Interval [ft]	Start TVD [ft]	End TVD [ft]	Start N/S [ft]	Start E/W [ft]	End N/S [ft]	End E/W [ft]
9.625in Casing Surface	20.50	1500.00	1479.50	20.50	1500.00	0.00	0.00	0.00	0.00

## TARGETS

Name	MD [ft]	TVD [ft]	North [ft]	East [ft]	Grid East [US ft]	Grid North [US ft]	Latitude	Longitude	Shape
SEC.04-T01S-R65W	N/A	0.00	0.00	0.00	3230610.94	1244798.80	40.0024200	-104.6768000	polygon
	2D Polygon: dimensions not calculated								
SEC.04/09-T01S-R65W 470' SETBACK	N/A	0.00	0.00	0.00	3230610.94	1244798.80	40.0024200	-104.6768000	polygon
	2D Polygon: dimensions not calculated								
SEC.04/09-T01S-R65W N/S 470' SETBACK	N/A	0.00	0.00	0.00	3230610.94	1244798.80	40.0024200	-104.6768000	polygon
	2D Polygon: dimensions not calculated								
SEC.09-T01S-R65W	N/A	0.00	0.00	0.00	3230610.94	1244798.80	40.0024200	-104.6768000	polygon
	2D Polygon: dimensions not calculated								
2) Desha 4-5-4L BHL REV-1 (470'FSL & 184'FWL,SEC.09)	17147.10	7493.50	-10487.81	-280.27	3230428.05	1234309.22	39.9736300	-104.6778000	point
1) Desha 4-5-4L LP REV-1 (470'FNL & 184'FWL,SEC.04)	7814.04	7493.50	-1154.79	-252.15	3230369.53	1243641.76	39.9992500	-104.6777000	point

## SURVEY PROGRAM - Ref Wellbore: Desha 4-5-4L PWB Ref Wellpath: Desha 4-5-4L PWP Rev-A.0

Start MD [ft]	End MD [ft]	Positional Uncertainty Model	Log Name/Comment	Wellbore
20.50	1500.00	BH NaviTrak (2019) (Axial)		Desha 4-5-4L PWB
1500.00	17191.28	BH AutoTrak Curve/eXpress (2019) (Short spacing)		Desha 4-5-4L PWB



# Planned Wellpath Report

Desha 4-5-4L PWP Rev-A.0

Page 7 of 7

## REFERENCE WELLPATH IDENTIFICATION

Operator	CONFLUENCE RESOURCES	Well	Desha 4-5-4L
Field	WELD COUNTY (NAD83, TRUE NORTH)	API/Legal	
Facility	SEC.33-T01N-R65W	Wellbore	Desha 4-5-4L PWB
Slot	SLOT#13 Desha 4-5-4L (685'FSL & 450'FWL,SEC.33)		

## DESIGN COMMENTS

MD [ft]	Inclination [°]	Azimuth [°]	TVD [ft]	Comment
20.50	0.000	198.860	20.50	Tie On
1550.00	0.000	198.860	1550.00	End of Tangent
1934.28	7.686	198.860	1933.12	End of Build
7124.69	7.686	198.860	7076.91	KOP
7814.04	90.000	180.173	7493.50	LANDING
17147.10	90.000	180.173	7493.50	TD