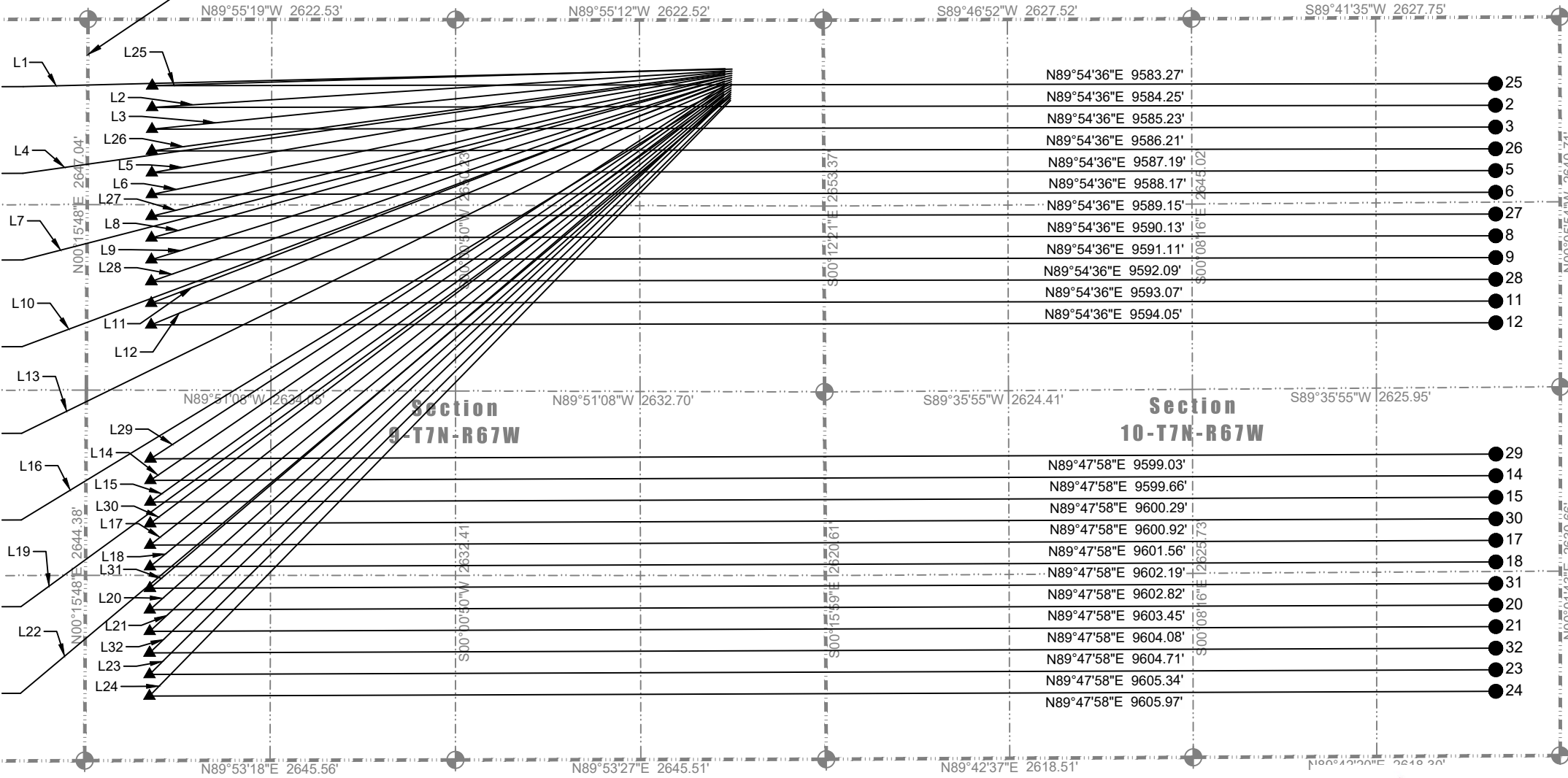


SECTION: 7, 8, 9 & 10  
 TOWNSHIP: 7N  
 RANGE: 67W  
 6TH P.M.  
 WELD COUNTY, CO

# MULTI-WELL PLAN BLEHM WEST PAD

MATCH LINE  
 SEE SHEET 2



Line Table		
Line #	Length	Direction
L1	5058.53'	S88°34'56"W
L2	4095.54'	S86°20'28"W
L3	4158.29'	S84°17'10"W
L4	5108.59'	S81°58'01"W
L5	4146.54'	S80°19'37"W
L6	4224.57'	S78°24'06"W
L7	5224.62'	S75°34'03"W
L8	4242.21'	S74°31'03"W
L9	4333.89'	S72°45'05"W
L10	5402.75'	S69°30'56"W
L11	4379.34'	S69°01'03"W
L12	4483.08'	S67°25'41"W
L13	5637.06'	S63°54'22"W
L14	4961.01'	S55°35'52"W
L15	5040.81'	S54°17'40"W
L16	5928.83'	S58°40'04"W
L17	5207.42'	S51°48'42"W
L18	5294.44'	S50°37'46"W
L19	6265.75'	S53°57'32"W
L20	5474.92'	S48°22'49"W
L21	5656.79'	S47°08'23"W
L22	6619.75'	S49°56'50"W
L23	5838.05'	S45°14'42"W
L24	5936.69'	S44°17'33"W
L25	4089.00'	S88°18'10"W
L26	4125.31'	S82°14'52"W
L27	4206.96'	S76°21'31"W
L28	4331.11'	S70°45'01"W
L29	4883.86'	S56°56'36"W
L30	5122.91'	S53°01'49"W
L31	5383.65'	S49°29'10"W
L32	5752.20'	S46°07'30"W



2009 W. Littleton Blvd. #300 Littleton, CO 80120  
 970.576.4641 | www.SterlingLandSurveyors.com



NOTE:  
 - BEARINGS AND DISTANCES  
 BASED ON NAD 83 COLORADO  
 NORTH STATE PLANE.

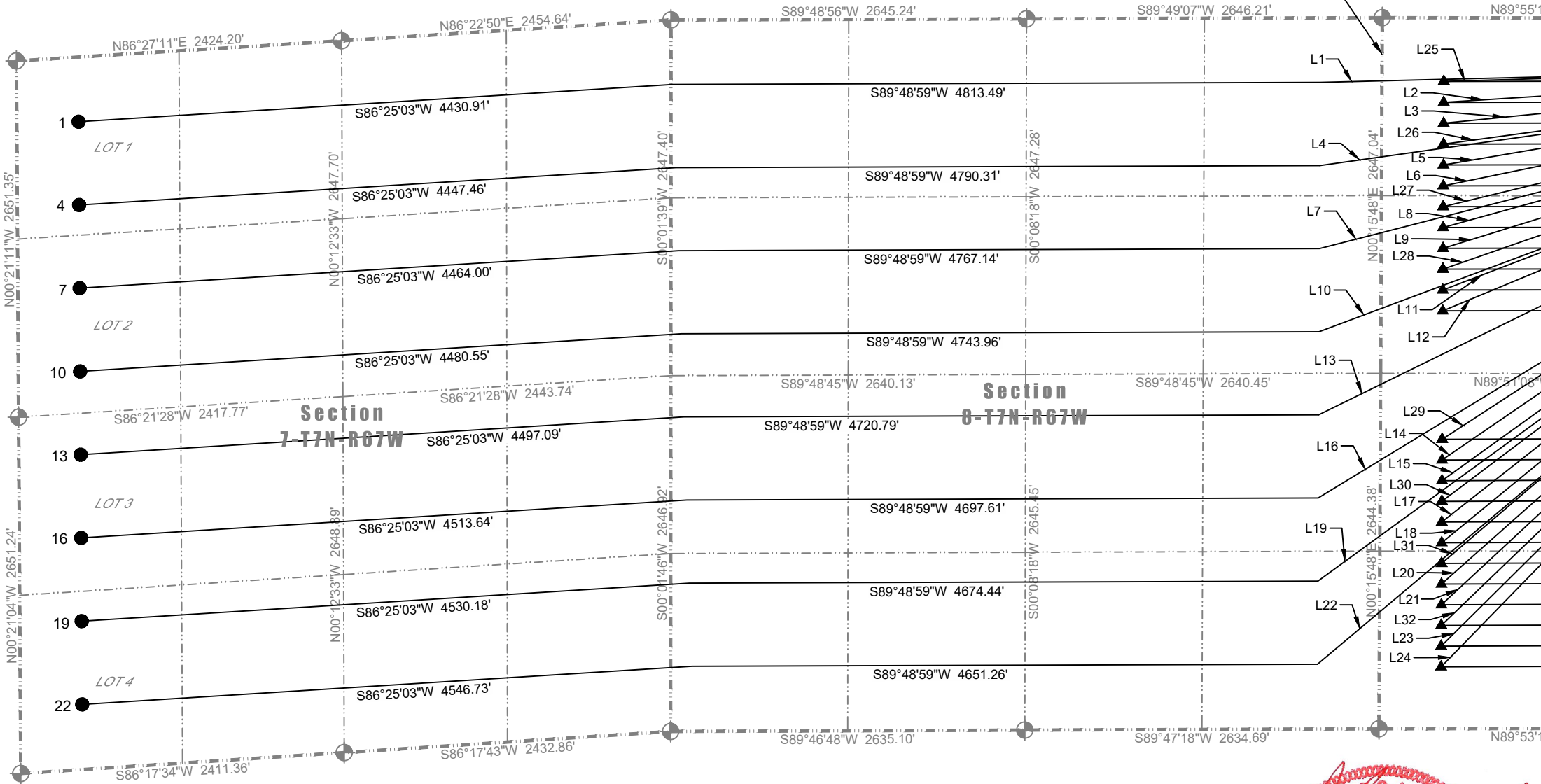
- LEGEND:
- ⊕ ALIQUOT CORNER AS DESCRIBED
  - ⊙ CALCULATED POSITION
  - ⊙ SURFACE HOLE LOCATION (SHL)
  - ▲ LANDING POINT LOCATION (LPL)
  - BOTTOM HOLE LOCATION (BHL)



SECTION: 7, 8, 9 & 10  
 TOWNSHIP: 7N  
 RANGE: 67W  
 6TH P.M.  
 WELD COUNTY, CO

# MULTI-WELL PLAN BLEHM WEST PAD

MATCH LINE  
 SEE SHEET 1



Line Table		
Line #	Length	Direction
L1	5058.53'	S88°34'56"W
L2	4095.54'	S86°20'28"W
L3	4158.29'	S84°17'10"W
L4	5108.59'	S81°58'01"W
L5	4146.54'	S80°19'37"W
L6	4224.57'	S78°24'06"W
L7	5224.62'	S75°34'03"W
L8	4242.21'	S74°31'03"W
L9	4333.89'	S72°45'05"W
L10	5402.75'	S69°30'56"W
L11	4379.34'	S69°01'03"W
L12	4483.08'	S67°25'41"W
L13	5637.06'	S63°54'22"W
L14	4961.01'	S55°35'52"W
L15	5040.81'	S54°17'40"W
L16	5928.83'	S58°40'04"W
L17	5207.42'	S51°48'42"W
L18	5294.44'	S50°37'46"W
L19	6265.75'	S53°57'32"W
L20	5474.92'	S48°22'49"W
L21	5656.79'	S47°08'23"W
L22	6619.75'	S49°56'50"W
L23	5838.05'	S45°14'42"W
L24	5936.69'	S44°17'33"W
L25	4089.00'	S88°18'10"W
L26	4125.31'	S82°14'52"W
L27	4206.96'	S76°21'31"W
L28	4331.11'	S70°45'01"W
L29	4883.86'	S56°56'36"W
L30	5122.91'	S53°01'49"W
L31	5383.65'	S49°29'10"W
L32	5752.20'	S46°07'30"W



2009 W. Littleton Blvd. #300 Littleton, CO 80120  
 970.576.4641 | www.SterlingLandSurveyors.com



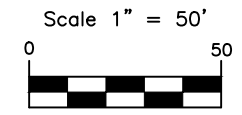
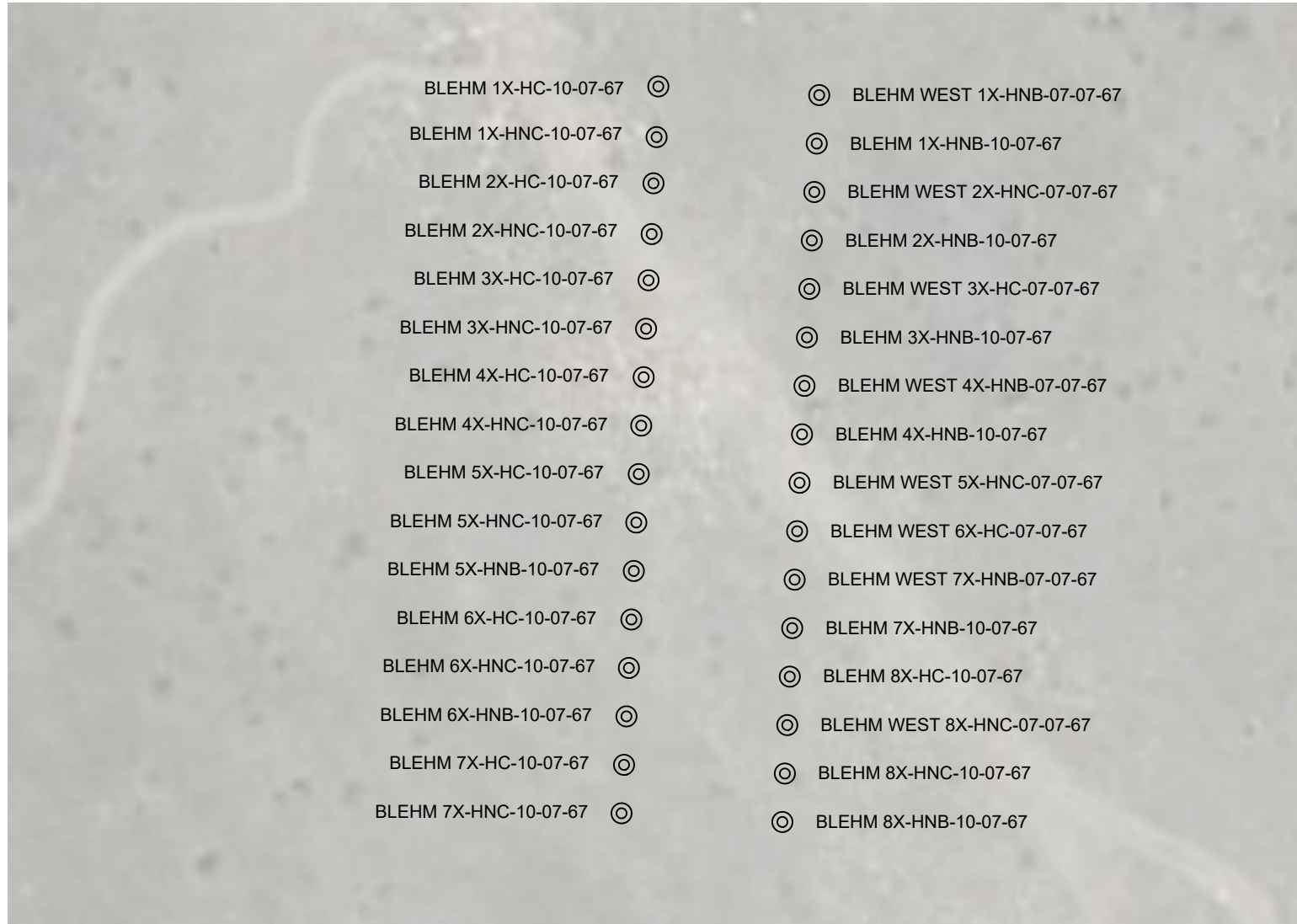
NOTE:  
 - BEARINGS AND DISTANCES  
 BASED ON NAD 83 COLORADO  
 NORTH STATE PLANE.

- LEGEND:
- ALIQUOT CORNER AS DESCRIBED
  - CALCULATED POSITION
  - SURFACE HOLE LOCATION (SHL)
  - LANDING POINT LOCATION (LPL)
  - BOTTOM HOLE LOCATION (BHL)



SECTION: 7, 8, 9 & 10  
TOWNSHIP: 7N  
RANGE: 67W  
6TH P.M.  
WELD COUNTY, CO

# MULTI-WELL PLAN BLEHM WEST PAD



**LEGEND:**  
(C) SURFACE HOLE LOCATION (SHL)



SECTION: 7, 8, 9 & 10  
 TOWNSHIP: 7N  
 RANGE: 67W  
 6TH P.M.  
 WELD COUNTY, CO

## MULTI-WELL PLAN BLEHM WEST PAD

NO.	WELL	SHL INFO				LPL INFO				APL INFO				BHL INFO								
		SHL LAT	SHL LONG	FOOTAGES		LPL LAT	LPL LONG	FOOTAGES		APL LAT	APL LONG	FOOTAGES		BHL LAT	BHL LONG	FOOTAGES						
1	BLEHM WEST-1X-HNB-07-07-67	40.594996	-104.890975	350' FNL	652' FEL	OF SECTION 9	40.594746	-104.909187	480 FNL	460 FEL	OF SECTION 8	40.594790	-104.926520	480 FNL	16 FWL	OF SECTION 8	40.594108	-104.942450	480 FNL	460 FWL	OF SECTION 7	
2	BLEHM-1X-HNC-10-07-67	40.594963	-104.891157	362' FNL	702' FEL	OF SECTION 9	40.594322	-104.905880	629 FNL	460 FWL	OF SECTION 9	N/A	N/A	N/A	N/A	N/A	N/A	40.594182	-104.871370	629 FNL	460 FEL	OF SECTION 10
3	BLEHM-1X-HNB-10-07-67	40.594955	-104.890978	365' FNL	652' FEL	OF SECTION 9	40.593896	-104.905887	785 FNL	460 FWL	OF SECTION 9	N/A	N/A	N/A	N/A	N/A	N/A	40.593756	-104.871373	785 FNL	460 FEL	OF SECTION 10
4	BLEHM WEST-2X-HNC-07-07-67	40.594914	-104.890981	380' FNL	653' FEL	OF SECTION 9	40.593048	-104.909212	1099 FNL	460 FEL	OF SECTION 8	40.593093	-104.926461	1099 FNL	37 FWL	OF SECTION 8	40.592407	-104.942450	1098 FNL	460 FWL	OF SECTION 7	
5	BLEHM-2X-HNC-10-07-67	40.594880	-104.891164	392' FNL	704' FEL	OF SECTION 9	40.593044	-104.905899	1095 FNL	460 FWL	OF SECTION 9	N/A	N/A	N/A	N/A	N/A	N/A	40.592904	-104.871379	1095 FNL	460 FEL	OF SECTION 10
6	BLEHM-2X-HNB-10-07-67	40.594872	-104.890984	395' FNL	654' FEL	OF SECTION 9	40.592618	-104.905906	1250 FNL	460 FWL	OF SECTION 9	N/A	N/A	N/A	N/A	N/A	N/A	40.592478	-104.871382	1250 FNL	460 FEL	OF SECTION 10
7	BLEHM WEST-3X-HC-07-07-67	40.594831	-104.890987	410' FNL	655' FEL	OF SECTION 9	40.591351	-104.909237	1717 FNL	460 FEL	OF SECTION 8	40.591395	-104.926402	1717 FNL	57 FWL	OF SECTION 8	40.590707	-104.942450	1717 FNL	460 FWL	OF SECTION 7	
8	BLEHM-3X-HNC-10-07-67	40.594798	-104.891170	422' FNL	706' FEL	OF SECTION 9	40.591766	-104.905918	1561 FNL	460 FWL	OF SECTION 9	N/A	N/A	N/A	N/A	N/A	N/A	40.591626	-104.871388	1561 FNL	460 FEL	OF SECTION 10
9	BLEHM-3X-HNB-10-07-67	40.594790	-104.890990	425' FNL	656' FEL	OF SECTION 9	40.591340	-104.905925	1716 FNL	460 FWL	OF SECTION 9	N/A	N/A	N/A	N/A	N/A	N/A	40.591200	-104.871391	1716 FNL	460 FEL	OF SECTION 10
10	BLEHM WEST-4X-HNB-07-07-67	40.594749	-104.890993	440' FNL	657' FEL	OF SECTION 9	40.589653	-104.909262	2336 FNL	460 FWL	OF SECTION 8	40.589697	-104.926343	2336 FNL	78 FWL	OF SECTION 8	40.589007	-104.942451	2335 FNL	460 FWL	OF SECTION 7	
11	BLEHM-4X-HNC-10-07-67	40.594716	-104.891176	452' FNL	707' FEL	OF SECTION 9	40.590488	-104.905937	2026 FNL	460 FWL	OF SECTION 9	N/A	N/A	N/A	N/A	N/A	N/A	40.590348	-104.871397	2026 FNL	460 FEL	OF SECTION 10
12	BLEHM-4X-HNB-10-07-67	40.594708	-104.890996	455' FNL	657' FEL	OF SECTION 9	40.590062	-104.905944	2181 FNL	460 FWL	OF SECTION 9	N/A	N/A	N/A	N/A	N/A	N/A	40.589922	-104.871400	2181 FNL	460 FEL	OF SECTION 10
13	BLEHM WEST-5X-HNC-07-07-67	40.594667	-104.890999	470' FNL	658' FEL	OF SECTION 9	40.587955	-104.909287	2338 FSL	460 FEL	OF SECTION 8	40.587999	-104.926285	2340 FSL	99 FWL	OF SECTION 8	40.587306	-104.942451	2339 FSL	460 FWL	OF SECTION 7	
14	BLEHM-5X-HNC-10-07-67	40.594634	-104.891182	482' FNL	709' FEL	OF SECTION 9	40.587017	-104.905989	1999 FSL	460 FWL	OF SECTION 9	N/A	N/A	N/A	N/A	N/A	N/A	40.586927	-104.871426	1999 FSL	460 FEL	OF SECTION 10
15	BLEHM-5X-HNB-10-07-67	40.594593	-104.891185	497' FNL	710' FEL	OF SECTION 9	40.586594	-104.905995	1845 FSL	460 FWL	OF SECTION 9	N/A	N/A	N/A	N/A	N/A	N/A	40.586505	-104.871430	1845 FSL	460 FEL	OF SECTION 10
16	BLEHM WEST-6X-HC-07-07-67	40.594626	-104.891003	485' FNL	659' FEL	OF SECTION 9	40.586258	-104.909313	1719 FSL	460 FEL	OF SECTION 8	40.586301	-104.926226	1722 FSL	119 FWL	OF SECTION 8	40.585606	-104.942451	1720 FSL	460 FWL	OF SECTION 7	
17	BLEHM-6X-HNC-10-07-67	40.594510	-104.891192	527' FNL	711' FEL	OF SECTION 9	40.585749	-104.906007	1537 FSL	460 FWL	OF SECTION 9	N/A	N/A	N/A	N/A	N/A	N/A	40.585660	-104.871438	1537 FSL	460 FEL	OF SECTION 10
18	BLEHM-6X-HNB-10-07-67	40.594469	-104.891195	542' FNL	712' FEL	OF SECTION 9	40.585327	-104.906014	1383 FSL	460 FWL	OF SECTION 9	N/A	N/A	N/A	N/A	N/A	N/A	40.585237	-104.871442	1383 FSL	460 FEL	OF SECTION 10
19	BLEHM WEST-7X-HNB-07-07-67	40.594585	-104.891006	500' FNL	660' FEL	OF SECTION 9	40.584560	-104.909338	1101 FSL	460 FEL	OF SECTION 8	40.584603	-104.926167	1103 FSL	140 FWL	OF SECTION 8	40.583905	-104.942451	1102 FSL	460 FWL	OF SECTION 7	
21	BLEHM-7X-HNC-10-07-67	40.594387	-104.891201	572' FNL	714' FEL	OF SECTION 9	40.584482	-104.906026	1076 FSL	460 FWL	OF SECTION 9	N/A	N/A	N/A	N/A	N/A	N/A	40.584393	-104.871451	1076 FSL	460 FEL	OF SECTION 10
22	BLEHM-7X-HNB-10-07-67	40.594544	-104.891009	515' FNL	661' FEL	OF SECTION 9	40.584060	-104.906033	922 FSL	460 FWL	OF SECTION 9	N/A	N/A	N/A	N/A	N/A	N/A	40.583970	-104.871455	922 FSL	460 FEL	OF SECTION 10
22	BLEHM WEST-8X-HNC-07-07-67	40.594461	-104.891015	545' FNL	662' FEL	OF SECTION 9	40.582862	-104.909363	482 FSL	460 FEL	OF SECTION 8	40.582905	-104.926108	485 FSL	160 FWL	OF SECTION 8	40.582205	-104.942452	484 FSL	460 FWL	OF SECTION 7	
23	BLEHM-8X-HNC-10-07-67	40.594420	-104.891018	560' FNL	663' FEL	OF SECTION 9	40.583215	-104.906045	614 FSL	460 FWL	OF SECTION 9	N/A	N/A	N/A	N/A	N/A	N/A	40.583125	-104.871464	614 FSL	460 FEL	OF SECTION 10
24	BLEHM-8X-HNB-10-07-67	40.594379	-104.891021	575' FNL	664' FEL	OF SECTION 9	40.582792	-104.906051	460 FSL	460 FWL	OF SECTION 9	N/A	N/A	N/A	N/A	N/A	N/A	40.582703	-104.871468	460 FSL	460 FEL	OF SECTION 10
25	BLEHM-1X-HC-10-07-67	40.595004	-104.891154	347' FNL	702' FEL	OF SECTION 9	40.594748	-104.905874	474 FNL	460 FWL	OF SECTION 9	N/A	N/A	N/A	N/A	N/A	N/A	40.594608	-104.871367	474 FNL	460 FEL	OF SECTION 10
26	BLEHM-2X-HC-10-07-67	40.594921	-104.891161	377' FNL	703' FEL	OF SECTION 9	40.593470	-104.905893	940 FNL	460 FWL	OF SECTION 9	N/A	N/A	N/A	N/A	N/A	N/A	40.593330	-104.871376	940 FNL	460 FEL	OF SECTION 10
27	BLEHM-3X-HC-10-07-67	40.594839	-104.891167	407' FNL	705' FEL	OF SECTION 9	40.592192	-104.905912	1405 FNL	460 FWL	OF SECTION 9	N/A	N/A	N/A	N/A	N/A	N/A	40.592052	-104.871385	1405 FNL	460 FEL	OF SECTION 10
28	BLEHM-4X-HC-10-07-67	40.594757	-104.891173	437' FNL	706' FEL	OF SECTION 9	40.590914	-104.905931	1871 FNL	460 FWL	OF SECTION 9	N/A	N/A	N/A	N/A	N/A	N/A	40.590774	-104.871394	1871 FNL	460 FEL	OF SECTION 10
29	BLEHM-5X-HC-10-07-67	40.594675	-104.891179	467' FNL	708' FEL	OF SECTION 9	40.587439	-104.905982	2153 FSL	460 FWL	OF SECTION 9	N/A	N/A	N/A	N/A	N/A	N/A	40.587350	-104.871421	2153 FSL	460 FEL	OF SECTION 10
30	BLEHM-6X-HC-10-07-67	40.594552	-104.891189	512' FNL	711' FEL	OF SECTION 9	40.586172	-104.906001	1691 FSL	460 FWL	OF SECTION 9	N/A	N/A	N/A	N/A	N/A	N/A	40.586082	-104.871434	1691 FSL	460 FEL	OF SECTION 10
31	BLEHM-7X-HC-10-07-67	40.594428	-104.891198	557' FNL	713' FEL	OF SECTION 9	40.584904	-104.906020	1229 FSL	460 FWL	OF SECTION 9	N/A	N/A	N/A	N/A	N/A	N/A	40.584815	-104.871447	1229 FSL	460 FEL	OF SECTION 10
32	BLEHM-8X-HC-10-07-67	40.594503	-104.891012	530' FNL	661' FEL	OF SECTION 9	40.583637	-104.906039	768 FSL	460 FWL	OF SECTION 9	N/A	N/A	N/A	N/A	N/A	N/A	40.583548	-104.871459	768 FSL	460 FEL	OF SECTION 10



2009 W. Littleton Blvd. #300 Littleton, CO 80120  
 970.576.4641 | www.SterlingLandSurveyors.com

