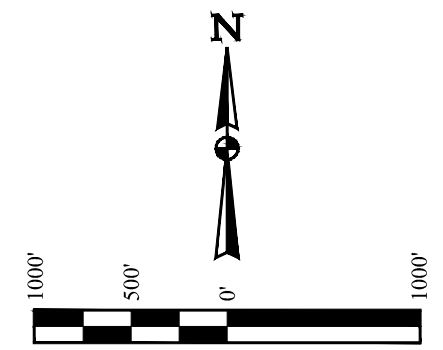
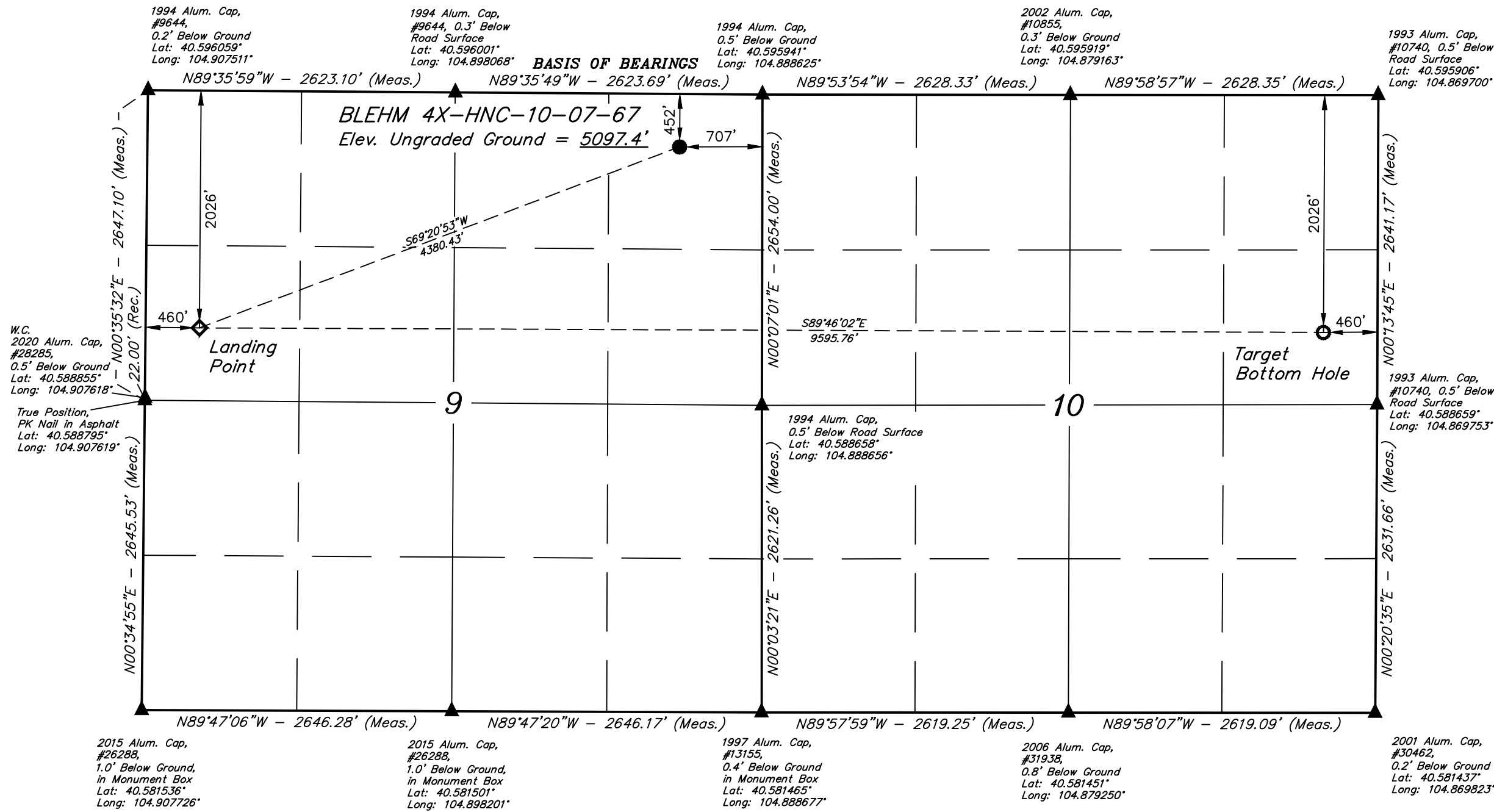


# T7N, R67W, 6th P.M.

## NICKEL ROAD OPERATING

BLEHM 4X-HNC-10-07-67  
NE 1/4 NE 1/4, SECTION 9, T7N, R67W, 6th P.M.  
WELD COUNTY, COLORADO

BASIS OF ELEVATION  
OPUS SOLUTION GENERATED NAVD 88



**NOTE:**  
Distances referenced on plat to section lines are perpendicular.

**LEGEND:**

- = PROPOSED WELLHEAD.
- = TARGET BOTTOM HOLE.
- ◇ = LANDING POINT.
- ▲ = SECTION CORNERS LOCATED. (NAD 83)

PDOP = 1.6

CERTIFICATE OF REGISTRATION  
THIS IS TO CERTIFY THAT THE ABOVE PLAT WAS PREPARED FROM THE NOTES OF ACTUAL SURVEYS MADE BY ME OR UNDER MY SUPERVISION AND THAT THE SAME ARE TRUE AND CORRECT TO THE BEST OF MY KNOWLEDGE AND BELIEF.

*[Signature]*  
REGISTERED LAND SURVEYOR  
REGISTRATION NO. 28285  
STATE OF COLORADO  
EXPIRES 08-01-20

REV: 1 08-03-20 C.IVIE (UPDATE ELEVATION NOTE)

NAD 83 (SURFACE LOCATION)	NAD 83 (LANDING POINT)	NAD 83 (TARGET BOTTOM HOLE)
LATITUDE = 40°35'40.98" (40.594716°)	LATITUDE = 40°35'25.76" (40.590489°)	LATITUDE = 40°35'25.26" (40.590349°)
LONGITUDE = 104°53'28.23" (104.891176°)	LONGITUDE = 104°54'21.38" (104.905938°)	LONGITUDE = 104°52'17.03" (104.871396°)
NAD 27 (SURFACE LOCATION)	NAD 27 (LANDING POINT)	NAD 27 (TARGET BOTTOM HOLE)
LATITUDE = 40°35'41.04" (40.594734°)	LATITUDE = 40°35'25.83" (40.590508°)	LATITUDE = 40°35'25.32" (40.590368°)
LONGITUDE = 104°53'26.33" (104.890648°)	LONGITUDE = 104°54'19.48" (104.905410°)	LONGITUDE = 104°52'15.13" (104.870869°)
STATE PLANE NAD 83 (CO. NORTH)	STATE PLANE NAD 83 (CO. NORTH)	STATE PLANE NAD 83 (CO. NORTH)
N: 1460076.84' E: 3169075.43'	N: 1458509.25' E: 3164986.30'	N: 1458524.28' E: 3174579.59'
STATE PLANE NAD 27 (CO. NORTH)	STATE PLANE NAD 27 (CO. NORTH)	STATE PLANE NAD 27 (CO. NORTH)
N: 460076.41' E: 2169226.39'	N: 458508.77' E: 2165137.29'	N: 458523.97' E: 2174730.54'

**UINTEAH**  
ENGINEERING & LAND SURVEYING

**WELLS, LLC**  
Corporate Office \* 85 South 200 East  
Vernal, UT 84078 \* (435) 789-1017

SURVEYED BY	NATE WELCH, A.S.	06-23-20	SCALE
DRAWN BY	Z.L.	07-23-20	1" = 1000'

**WELL LOCATION PLAT**