

Well Name:

BLEHM-4X-HNC-10-07-67

Project Name:

Sec. 9-T7N-R67W

Pad Name:

BLEHM Pad

ANNOTATIONS

MD	Inc	Azi	TVD	+N/-S	+E/-W	V Sect	Departure	Annotation
1500.00	0.00	0.00	1500.00	0.00	0.00	0.00	0.00	Surf Csg
1600.00	0.00	0.00	1600.00	0.00	0.00	0.00	0.00	Start Build 2.00
4513.01	58.26	254.74	4036.35	-357.27	-1309.88	-1163.72	1357.73	Hold 58.26 Inc, 254.74 Az
8159.39	58.26	254.74	5954.58	-1173.28	-4301.64	-3821.64	4458.78	KOP 10°/100
9601.86	89.00	89.91	6920.00	-1568.01	-3983.00	-3407.82	5826.24	LP 89.00 Inc, 89.91 Az
19092.23	89.00	89.91	7085.00	-1552.88	5505.92	5720.72	15315.17	TD at 19092.23

Geodetic Datum:

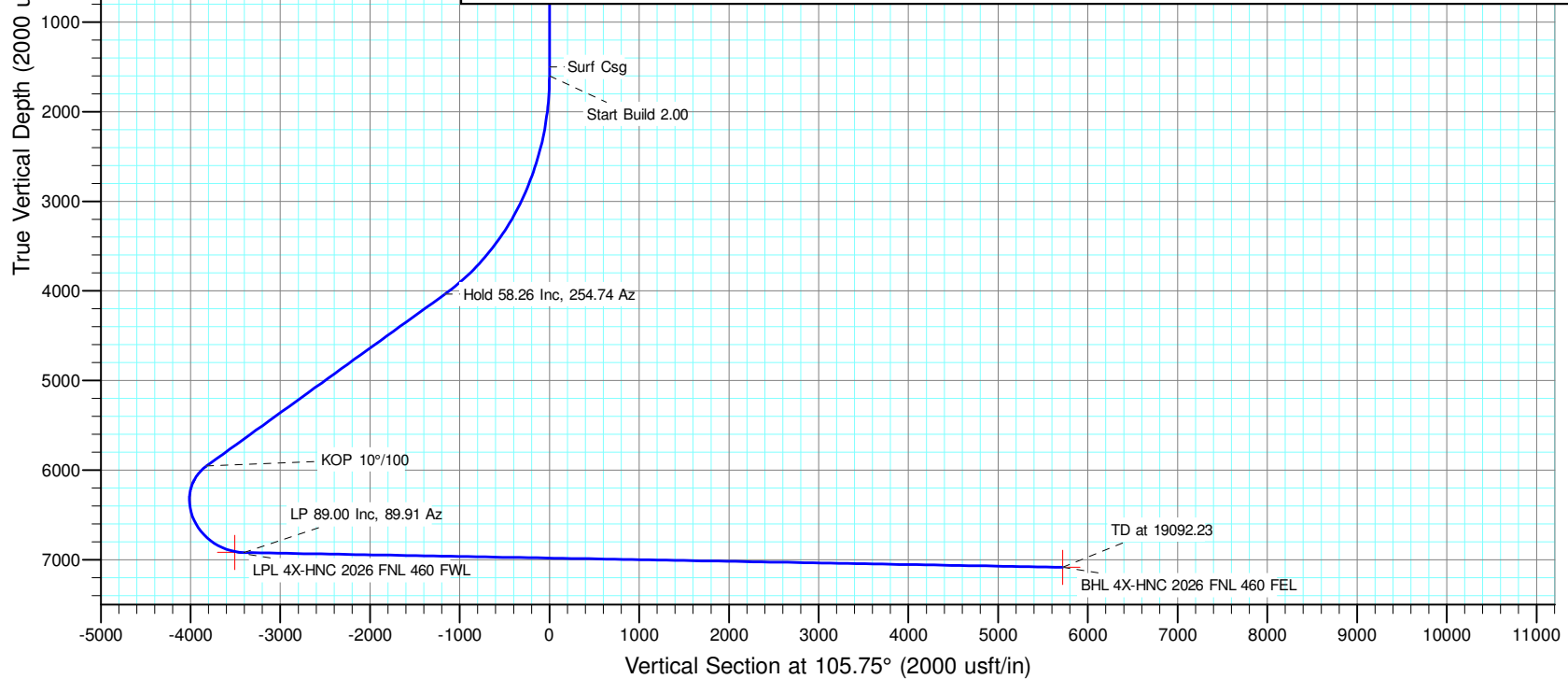
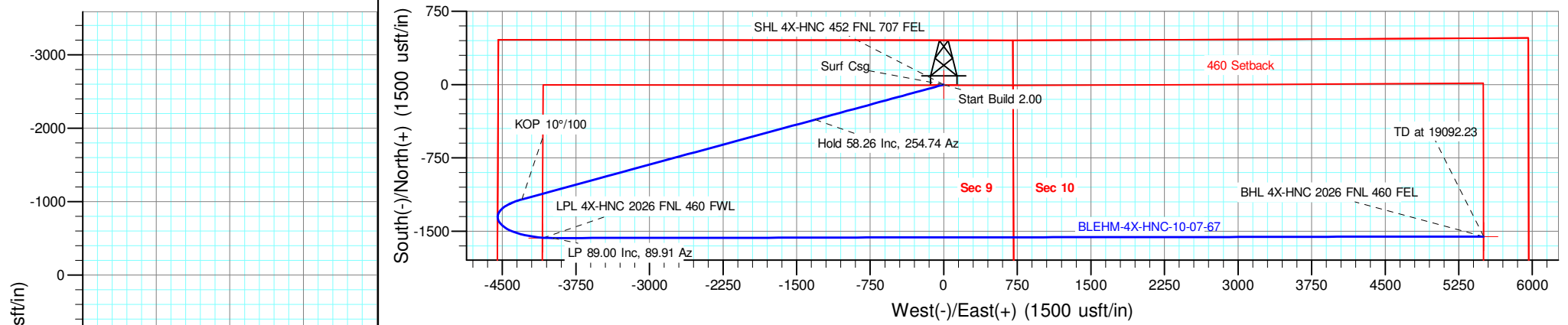
North American Datum 1983
US State Plane 1983, Colorado Northern Zone

Elevation:

Ground Elevation: 5088.00
KB Elevation: KB @ 5115.00usft

DESIGN TARGET DETAILS

Name	TVD	+N/-S	+E/-W	Northing	Easting	Latitude	Longitude	Shape
SHL 4X-HNC 452 FNL 707 FEL	0.00	0.02	0.00	1460076.846	3169075.428	40.594716	-104.891176	Point
LPL 4X-HNC 2026 FNL 460 FWL	6918.00	-1568.01	-4086.93	1458508.817	3164988.502	40.590488	-104.905930	Point
BHL 4X-HNC 2026 FNL 460 FEL	7085.00	-1552.88	5505.92	1458523.948	3174581.353	40.590348	-104.871390	Point



Azimuths to Grid North
 True North: -0.39°
 Magnetic North: 7.71°

Magnetic Field
 Strength: 52272.9nT
 Dip Angle: 66.94°
 Date: 4/2/2019
 Model: IGRF2015

NICKEL ROAD

O P E R A T I N G

Nickel Road Operating

Sec. 9-T7N-R67W

BLEHM Pad

BLEHM-4X-HNC-10-07-67

Wellbore #1

Plan: Plan #2

Standard Planning Report - Geographic

20 July, 2020

Database:	EDM 5000.15 Single User Db	Local Co-ordinate Reference:	Well BLEHM-4X-HNC-10-07-67
Company:	Nickel Road Operating	TVD Reference:	KB @ 5115.00usft
Project:	Sec. 9-T7N-R67W	MD Reference:	KB @ 5115.00usft
Site:	BLEHM Pad	North Reference:	Grid
Well:	BLEHM-4X-HNC-10-07-67	Survey Calculation Method:	Minimum Curvature
Wellbore:	Wellbore #1		
Design:	Plan #2		

Project	Sec. 9-T7N-R67W, Weld County, CO		
Map System:	US State Plane 1983	System Datum:	Mean Sea Level
Geo Datum:	North American Datum 1983		
Map Zone:	Colorado Northern Zone		

Site	BLEHM Pad				
Site Position:		Northing:	1,458,460.000 usft	Latitude:	40.590318
From:	Lat/Long	Easting:	3,166,936.305 usft	Longitude:	-104.898918
Position Uncertainty:	0.00 usft	Slot Radius:	13-3/16 "	Grid Convergence:	0.39 °

Well	BLEHM-4X-HNC-10-07-67					
Well Position	+N/-S	0.00 usft	Northing:	1,460,076.825 usft	Latitude:	40.594716
	+E/-W	0.00 usft	Easting:	3,169,075.429 usft	Longitude:	-104.891176
Position Uncertainty		0.00 usft	Wellhead Elevation:		Ground Level:	5,088.00 usft

Wellbore	Wellbore #1				
Magnetics	Model Name	Sample Date	Declination (°)	Dip Angle (°)	Field Strength (nT)
	IGRF2015	4/2/2019	8.10	66.94	52,272.93885003

Design	Plan #2			
Audit Notes:				
Version:	Phase:	PLAN	Tie On Depth:	0.00
Vertical Section:	Depth From (TVD) (usft)	+N/-S (usft)	+E/-W (usft)	Direction (°)
	0.00	0.00	0.00	105.75

Plan Survey Tool Program	Date	7/20/2020		
Depth From (usft)	Depth To (usft)	Survey (Wellbore)	Tool Name	Remarks
1	0.00	19,092.23 Plan #2 (Wellbore #1)	MWD	OWSG MWD - Standard

Plan Sections										
Measured Depth (usft)	Inclination (°)	Azimuth (°)	Vertical Depth (usft)	+N/-S (usft)	+E/-W (usft)	Dogleg Rate (°/100usft)	Build Rate (°/100usft)	Turn Rate (°/100usft)	TFO (°)	Target
0.00	0.00	0.00	0.00	0.00	0.00	0.00	0.00	0.00	0.00	
1,600.00	0.00	0.00	1,600.00	0.00	0.00	0.00	0.00	0.00	0.00	
4,513.01	58.26	254.74	4,036.35	-357.27	-1,309.88	2.00	2.00	0.00	254.74	
8,159.39	58.26	254.74	5,954.58	-1,173.28	-4,301.64	0.00	0.00	0.00	0.00	
9,601.86	89.00	89.91	6,920.00	-1,568.01	-3,983.00	10.00	2.13	-11.43	-153.40	
19,092.23	89.00	89.91	7,085.00	-1,552.88	5,505.92	0.00	0.00	0.00	0.00	BHL 4X-HNC 2026 Ft

Database:	EDM 5000.15 Single User Db	Local Co-ordinate Reference:	Well BLEHM-4X-HNC-10-07-67
Company:	Nickel Road Operating	TVD Reference:	KB @ 5115.00usft
Project:	Sec. 9-T7N-R67W	MD Reference:	KB @ 5115.00usft
Site:	BLEHM Pad	North Reference:	Grid
Well:	BLEHM-4X-HNC-10-07-67	Survey Calculation Method:	Minimum Curvature
Wellbore:	Wellbore #1		
Design:	Plan #2		

Planned Survey										
Measured Depth (usft)	Inclination (°)	Azimuth (°)	Vertical Depth (usft)	+N/-S (usft)	+E/-W (usft)	Map Northing (usft)	Map Easting (usft)	Latitude	Longitude	
0.00	0.00	0.00	0.00	0.00	0.00	1,460,076.825	3,169,075.429	40.594716	-104.891176	
SHL 4X-HNC 452 FNL 707 FEL										
100.00	0.00	0.00	100.00	0.00	0.00	1,460,076.825	3,169,075.429	40.594716	-104.891176	
200.00	0.00	0.00	200.00	0.00	0.00	1,460,076.825	3,169,075.429	40.594716	-104.891176	
300.00	0.00	0.00	300.00	0.00	0.00	1,460,076.825	3,169,075.429	40.594716	-104.891176	
400.00	0.00	0.00	400.00	0.00	0.00	1,460,076.825	3,169,075.429	40.594716	-104.891176	
500.00	0.00	0.00	500.00	0.00	0.00	1,460,076.825	3,169,075.429	40.594716	-104.891176	
600.00	0.00	0.00	600.00	0.00	0.00	1,460,076.825	3,169,075.429	40.594716	-104.891176	
700.00	0.00	0.00	700.00	0.00	0.00	1,460,076.825	3,169,075.429	40.594716	-104.891176	
800.00	0.00	0.00	800.00	0.00	0.00	1,460,076.825	3,169,075.429	40.594716	-104.891176	
900.00	0.00	0.00	900.00	0.00	0.00	1,460,076.825	3,169,075.429	40.594716	-104.891176	
1,000.00	0.00	0.00	1,000.00	0.00	0.00	1,460,076.825	3,169,075.429	40.594716	-104.891176	
1,100.00	0.00	0.00	1,100.00	0.00	0.00	1,460,076.825	3,169,075.429	40.594716	-104.891176	
1,200.00	0.00	0.00	1,200.00	0.00	0.00	1,460,076.825	3,169,075.429	40.594716	-104.891176	
1,300.00	0.00	0.00	1,300.00	0.00	0.00	1,460,076.825	3,169,075.429	40.594716	-104.891176	
1,400.00	0.00	0.00	1,400.00	0.00	0.00	1,460,076.825	3,169,075.429	40.594716	-104.891176	
1,500.00	0.00	0.00	1,500.00	0.00	0.00	1,460,076.825	3,169,075.429	40.594716	-104.891176	
Surf Csg										
1,600.00	0.00	0.00	1,600.00	0.00	0.00	1,460,076.825	3,169,075.429	40.594716	-104.891176	
Start Build 2.00										
1,700.00	2.00	254.74	1,699.98	-0.46	-1.68	1,460,076.366	3,169,073.745	40.594715	-104.891182	
1,800.00	4.00	254.74	1,799.84	-1.84	-6.73	1,460,074.989	3,169,068.696	40.594711	-104.891201	
1,900.00	6.00	254.74	1,899.45	-4.13	-15.14	1,460,072.696	3,169,060.288	40.594705	-104.891231	
2,000.00	8.00	254.74	1,998.70	-7.34	-26.90	1,460,069.489	3,169,048.532	40.594696	-104.891273	
2,100.00	10.00	254.74	2,097.47	-11.45	-41.99	1,460,065.373	3,169,033.440	40.594685	-104.891328	
2,200.00	12.00	254.74	2,195.62	-16.47	-60.40	1,460,060.352	3,169,015.033	40.594672	-104.891394	
2,300.00	14.00	254.74	2,293.06	-22.39	-82.10	1,460,054.433	3,168,993.331	40.594656	-104.891472	
2,400.00	16.00	254.74	2,389.64	-29.20	-107.07	1,460,047.623	3,168,968.363	40.594638	-104.891563	
2,500.00	18.00	254.74	2,485.27	-36.90	-135.27	1,460,039.930	3,168,940.158	40.594617	-104.891664	
2,600.00	20.00	254.74	2,579.82	-45.46	-166.68	1,460,031.363	3,168,908.750	40.594594	-104.891778	
2,700.00	22.00	254.74	2,673.17	-54.89	-201.25	1,460,021.934	3,168,874.178	40.594569	-104.891902	
2,800.00	24.00	254.74	2,765.21	-65.17	-238.95	1,460,011.653	3,168,836.483	40.594541	-104.892038	
2,900.00	26.00	254.74	2,855.84	-76.29	-279.72	1,460,000.532	3,168,795.713	40.594512	-104.892185	
3,000.00	28.00	254.74	2,944.94	-88.24	-323.51	1,459,988.587	3,168,751.916	40.594480	-104.892343	
3,100.00	30.00	254.74	3,032.39	-100.99	-370.28	1,459,975.830	3,168,705.146	40.594446	-104.892512	
3,200.00	32.00	254.74	3,118.11	-114.55	-419.97	1,459,962.278	3,168,655.460	40.594409	-104.892691	
3,300.00	34.00	254.74	3,201.97	-128.88	-472.51	1,459,947.947	3,168,602.918	40.594371	-104.892881	
3,400.00	36.00	254.74	3,283.88	-143.97	-527.84	1,459,932.855	3,168,547.584	40.594331	-104.893080	
3,500.00	38.00	254.74	3,363.74	-159.81	-585.90	1,459,917.020	3,168,489.526	40.594288	-104.893290	
3,600.00	40.00	254.74	3,441.45	-176.36	-646.61	1,459,900.461	3,168,428.815	40.594244	-104.893509	
3,700.00	42.00	254.74	3,516.92	-193.63	-709.90	1,459,883.198	3,168,365.524	40.594198	-104.893737	
3,800.00	44.00	254.74	3,590.05	-211.57	-775.70	1,459,865.253	3,168,299.731	40.594150	-104.893975	
3,900.00	46.00	254.74	3,660.76	-230.18	-843.91	1,459,846.647	3,168,231.516	40.594100	-104.894221	
4,000.00	48.00	254.74	3,728.95	-249.42	-914.47	1,459,827.404	3,168,160.962	40.594048	-104.894475	
4,100.00	50.00	254.74	3,794.56	-269.28	-987.27	1,459,807.545	3,168,088.154	40.593995	-104.894738	
4,200.00	52.00	254.74	3,857.48	-289.73	-1,062.25	1,459,787.097	3,168,013.182	40.593941	-104.895008	
4,300.00	54.00	254.74	3,917.66	-310.74	-1,139.29	1,459,766.083	3,167,936.137	40.593884	-104.895286	
4,400.00	56.00	254.74	3,975.02	-332.30	-1,218.32	1,459,744.529	3,167,857.113	40.593827	-104.895571	
4,500.00	58.00	254.74	4,029.48	-354.36	-1,299.22	1,459,722.461	3,167,776.206	40.593768	-104.895863	
4,513.01	58.26	254.74	4,036.35	-357.27	-1,309.88	1,459,719.555	3,167,765.549	40.593760	-104.895902	
Hold 58.26 Inc, 254.74 Az										
4,600.00	58.26	254.74	4,082.11	-376.74	-1,381.25	1,459,700.087	3,167,694.173	40.593708	-104.896159	
4,700.00	58.26	254.74	4,134.72	-399.12	-1,463.30	1,459,677.708	3,167,612.126	40.593648	-104.896455	
4,800.00	58.26	254.74	4,187.32	-421.50	-1,545.35	1,459,655.330	3,167,530.079	40.593588	-104.896751	

Database:	EDM 5000.15 Single User Db	Local Co-ordinate Reference:	Well BLEHM-4X-HNC-10-07-67
Company:	Nickel Road Operating	TVD Reference:	KB @ 5115.00usft
Project:	Sec. 9-T7N-R67W	MD Reference:	KB @ 5115.00usft
Site:	BLEHM Pad	North Reference:	Grid
Well:	BLEHM-4X-HNC-10-07-67	Survey Calculation Method:	Minimum Curvature
Wellbore:	Wellbore #1		
Design:	Plan #2		

Planned Survey										
Measured Depth (usft)	Inclination (°)	Azimuth (°)	Vertical Depth (usft)	+N/-S (usft)	+E/-W (usft)	Map Northing (usft)	Map Easting (usft)	Latitude	Longitude	
4,900.00	58.26	254.74	4,239.93	-443.87	-1,627.40	1,459,632.951	3,167,448.031	40.593528	-104.897047	
5,000.00	58.26	254.74	4,292.54	-466.25	-1,709.44	1,459,610.573	3,167,365.984	40.593468	-104.897343	
5,100.00	58.26	254.74	4,345.14	-488.63	-1,791.49	1,459,588.194	3,167,283.936	40.593408	-104.897639	
5,200.00	58.26	254.74	4,397.75	-511.01	-1,873.54	1,459,565.816	3,167,201.889	40.593348	-104.897935	
5,300.00	58.26	254.74	4,450.35	-533.39	-1,955.59	1,459,543.437	3,167,119.842	40.593288	-104.898231	
5,400.00	58.26	254.74	4,502.96	-555.77	-2,037.63	1,459,521.059	3,167,037.794	40.593229	-104.898527	
5,500.00	58.26	254.74	4,555.57	-578.14	-2,119.68	1,459,498.680	3,166,955.747	40.593169	-104.898823	
5,600.00	58.26	254.74	4,608.17	-600.52	-2,201.73	1,459,476.302	3,166,873.699	40.593109	-104.899119	
5,700.00	58.26	254.74	4,660.78	-622.90	-2,283.78	1,459,453.923	3,166,791.652	40.593049	-104.899415	
5,800.00	58.26	254.74	4,713.39	-645.28	-2,365.82	1,459,431.545	3,166,709.605	40.592989	-104.899711	
5,900.00	58.26	254.74	4,765.99	-667.66	-2,447.87	1,459,409.166	3,166,627.557	40.592929	-104.900007	
6,000.00	58.26	254.74	4,818.60	-690.04	-2,529.92	1,459,386.788	3,166,545.510	40.592869	-104.900303	
6,100.00	58.26	254.74	4,871.21	-712.42	-2,611.97	1,459,364.409	3,166,463.463	40.592809	-104.900599	
6,200.00	58.26	254.74	4,923.81	-734.79	-2,694.01	1,459,342.031	3,166,381.415	40.592749	-104.900895	
6,300.00	58.26	254.74	4,976.42	-757.17	-2,776.06	1,459,319.652	3,166,299.368	40.592689	-104.901191	
6,400.00	58.26	254.74	5,029.02	-779.55	-2,858.11	1,459,297.274	3,166,217.320	40.592630	-104.901487	
6,500.00	58.26	254.74	5,081.63	-801.93	-2,940.16	1,459,274.895	3,166,135.273	40.592570	-104.901783	
6,600.00	58.26	254.74	5,134.24	-824.31	-3,022.20	1,459,252.517	3,166,053.226	40.592510	-104.902079	
6,700.00	58.26	254.74	5,186.84	-846.69	-3,104.25	1,459,230.138	3,165,971.178	40.592450	-104.902375	
6,800.00	58.26	254.74	5,239.45	-869.07	-3,186.30	1,459,207.760	3,165,889.131	40.592390	-104.902671	
6,900.00	58.26	254.74	5,292.06	-891.44	-3,268.34	1,459,185.381	3,165,807.084	40.592330	-104.902967	
7,000.00	58.26	254.74	5,344.66	-913.82	-3,350.39	1,459,163.003	3,165,725.036	40.592270	-104.903262	
7,100.00	58.26	254.74	5,397.27	-936.20	-3,432.44	1,459,140.624	3,165,642.989	40.592210	-104.903558	
7,200.00	58.26	254.74	5,449.88	-958.58	-3,514.49	1,459,118.246	3,165,560.941	40.592150	-104.903854	
7,300.00	58.26	254.74	5,502.48	-980.96	-3,596.53	1,459,095.867	3,165,478.894	40.592090	-104.904150	
7,400.00	58.26	254.74	5,555.09	-1,003.34	-3,678.58	1,459,073.489	3,165,396.847	40.592030	-104.904446	
7,500.00	58.26	254.74	5,607.69	-1,025.71	-3,760.63	1,459,051.110	3,165,314.799	40.591971	-104.904742	
7,600.00	58.26	254.74	5,660.30	-1,048.09	-3,842.68	1,459,028.732	3,165,232.752	40.591911	-104.905038	
7,700.00	58.26	254.74	5,712.91	-1,070.47	-3,924.72	1,459,006.353	3,165,150.704	40.591851	-104.905334	
7,800.00	58.26	254.74	5,765.51	-1,092.85	-4,006.77	1,458,983.975	3,165,068.657	40.591791	-104.905630	
7,900.00	58.26	254.74	5,818.12	-1,115.23	-4,088.82	1,458,961.596	3,164,986.610	40.591731	-104.905926	
8,000.00	58.26	254.74	5,870.73	-1,137.61	-4,170.87	1,458,939.218	3,164,904.562	40.591671	-104.906222	
8,100.00	58.26	254.74	5,923.33	-1,159.99	-4,252.91	1,458,916.839	3,164,822.515	40.591611	-104.906518	
8,159.39	58.26	254.74	5,954.58	-1,173.28	-4,301.64	1,458,903.549	3,164,773.788	40.591575	-104.906694	
KOP 10°/100										
8,200.00	54.65	252.52	5,977.02	-1,182.80	-4,334.11	1,458,894.025	3,164,741.318	40.591550	-104.906811	
8,300.00	45.97	246.04	6,040.86	-1,209.72	-4,406.04	1,458,867.108	3,164,669.388	40.591477	-104.907071	
8,400.00	37.78	237.41	6,115.32	-1,240.89	-4,464.85	1,458,835.933	3,164,610.582	40.591393	-104.907283	
8,500.00	30.49	225.13	6,198.14	-1,275.38	-4,508.74	1,458,801.449	3,164,566.686	40.591299	-104.907442	
8,600.00	24.92	207.12	6,286.80	-1,312.12	-4,536.39	1,458,764.703	3,164,539.035	40.591199	-104.907542	
8,700.00	22.41	182.82	6,378.60	-1,350.01	-4,546.96	1,458,726.811	3,164,528.467	40.591095	-104.907581	
8,800.00	23.94	157.52	6,470.75	-1,387.90	-4,540.12	1,458,688.926	3,164,535.305	40.590991	-104.907558	
8,900.00	28.87	137.80	6,560.46	-1,424.63	-4,516.09	1,458,652.197	3,164,559.341	40.590890	-104.907472	
9,000.00	35.82	124.28	6,645.00	-1,459.08	-4,475.58	1,458,617.742	3,164,599.844	40.590794	-104.907327	
9,100.00	43.84	114.89	6,721.80	-1,490.22	-4,419.84	1,458,586.606	3,164,655.584	40.590708	-104.907127	
9,200.00	52.42	107.97	6,788.53	-1,517.09	-4,350.56	1,458,559.737	3,164,724.867	40.590633	-104.906878	
9,300.00	61.32	102.52	6,843.16	-1,538.88	-4,269.84	1,458,537.950	3,164,805.588	40.590571	-104.906588	
9,400.00	70.41	97.93	6,884.02	-1,554.92	-4,180.13	1,458,521.907	3,164,895.293	40.590526	-104.906266	
9,499.77	79.57	93.84	6,909.85	-1,564.71	-4,084.39	1,458,512.111	3,164,991.037	40.590497	-104.905921	
LPL 4X-HNC 2026 FNL 460 FWL										
9,500.00	79.59	93.84	6,909.89	-1,564.73	-4,084.17	1,458,512.096	3,164,991.259	40.590497	-104.905920	
9,600.00	88.83	89.98	6,919.97	-1,568.01	-3,984.86	1,458,508.815	3,165,090.568	40.590486	-104.905563	
9,601.86	89.00	89.91	6,920.00	-1,568.01	-3,983.00	1,458,508.817	3,165,092.428	40.590486	-104.905556	
LP 89.00 Inc, 89.91 Az										

Database:	EDM 5000.15 Single User Db	Local Co-ordinate Reference:	Well BLEHM-4X-HNC-10-07-67
Company:	Nickel Road Operating	TVD Reference:	KB @ 5115.00usft
Project:	Sec. 9-T7N-R67W	MD Reference:	KB @ 5115.00usft
Site:	BLEHM Pad	North Reference:	Grid
Well:	BLEHM-4X-HNC-10-07-67	Survey Calculation Method:	Minimum Curvature
Wellbore:	Wellbore #1		
Design:	Plan #2		

Planned Survey										
Measured Depth (usft)	Inclination (°)	Azimuth (°)	Vertical Depth (usft)	+N/-S (usft)	+E/-W (usft)	Map Northing (usft)	Map Easting (usft)	Latitude	Longitude	
9,700.00	89.00	89.91	6,921.71	-1,567.85	-3,884.88	1,458,508.972	3,165,190.553	40.590485	-104.905203	
9,800.00	89.00	89.91	6,923.45	-1,567.70	-3,784.89	1,458,509.129	3,165,290.538	40.590483	-104.904843	
9,900.00	89.00	89.91	6,925.19	-1,567.54	-3,684.91	1,458,509.287	3,165,390.522	40.590482	-104.904483	
10,000.00	89.00	89.91	6,926.93	-1,567.38	-3,584.92	1,458,509.445	3,165,490.507	40.590481	-104.904123	
10,100.00	89.00	89.91	6,928.67	-1,567.22	-3,484.94	1,458,509.602	3,165,590.492	40.590479	-104.903763	
10,200.00	89.00	89.91	6,930.41	-1,567.07	-3,384.95	1,458,509.760	3,165,690.476	40.590478	-104.903403	
10,300.00	89.00	89.91	6,932.15	-1,566.91	-3,284.97	1,458,509.918	3,165,790.461	40.590476	-104.903043	
10,400.00	89.00	89.91	6,933.89	-1,566.75	-3,184.98	1,458,510.075	3,165,890.446	40.590475	-104.902683	
10,500.00	89.00	89.91	6,935.63	-1,566.59	-3,085.00	1,458,510.233	3,165,990.431	40.590473	-104.902323	
10,600.00	89.00	89.91	6,937.37	-1,566.43	-2,985.01	1,458,510.391	3,166,090.415	40.590472	-104.901963	
10,700.00	89.00	89.91	6,939.11	-1,566.28	-2,885.03	1,458,510.549	3,166,190.400	40.590471	-104.901603	
10,800.00	89.00	89.91	6,940.86	-1,566.12	-2,785.04	1,458,510.706	3,166,290.385	40.590469	-104.901243	
10,900.00	89.00	89.91	6,942.60	-1,565.96	-2,685.06	1,458,510.864	3,166,390.370	40.590468	-104.900883	
11,000.00	89.00	89.91	6,944.34	-1,565.80	-2,585.07	1,458,511.022	3,166,490.354	40.590466	-104.900523	
11,100.00	89.00	89.91	6,946.08	-1,565.65	-2,485.09	1,458,511.179	3,166,590.339	40.590465	-104.900163	
11,200.00	89.00	89.91	6,947.82	-1,565.49	-2,385.10	1,458,511.337	3,166,690.324	40.590464	-104.899803	
11,300.00	89.00	89.91	6,949.56	-1,565.33	-2,285.12	1,458,511.495	3,166,790.308	40.590462	-104.899443	
11,400.00	89.00	89.91	6,951.30	-1,565.17	-2,185.13	1,458,511.653	3,166,890.293	40.590461	-104.899083	
11,500.00	89.00	89.91	6,953.04	-1,565.02	-2,085.15	1,458,511.810	3,166,990.278	40.590459	-104.898723	
11,600.00	89.00	89.91	6,954.78	-1,564.86	-1,985.17	1,458,511.968	3,167,090.263	40.590458	-104.898363	
11,700.00	89.00	89.91	6,956.52	-1,564.70	-1,885.18	1,458,512.126	3,167,190.247	40.590456	-104.898003	
11,800.00	89.00	89.91	6,958.26	-1,564.54	-1,785.20	1,458,512.283	3,167,290.232	40.590455	-104.897643	
11,900.00	89.00	89.91	6,960.00	-1,564.38	-1,685.21	1,458,512.441	3,167,390.217	40.590454	-104.897283	
12,000.00	89.00	89.91	6,961.74	-1,564.23	-1,585.23	1,458,512.599	3,167,490.201	40.590452	-104.896923	
12,100.00	89.00	89.91	6,963.48	-1,564.07	-1,485.24	1,458,512.756	3,167,590.186	40.590451	-104.896563	
12,200.00	89.00	89.91	6,965.22	-1,563.91	-1,385.26	1,458,512.914	3,167,690.171	40.590449	-104.896203	
12,300.00	89.00	89.91	6,966.96	-1,563.75	-1,285.27	1,458,513.072	3,167,790.156	40.590448	-104.895843	
12,400.00	89.00	89.91	6,968.70	-1,563.60	-1,185.29	1,458,513.230	3,167,890.140	40.590446	-104.895483	
12,500.00	89.00	89.91	6,970.45	-1,563.44	-1,085.30	1,458,513.387	3,167,990.125	40.590445	-104.895123	
12,600.00	89.00	89.91	6,972.19	-1,563.28	-985.32	1,458,513.545	3,168,090.110	40.590443	-104.894763	
12,700.00	89.00	89.91	6,973.93	-1,563.12	-885.33	1,458,513.703	3,168,190.095	40.590442	-104.894403	
12,800.00	89.00	89.91	6,975.67	-1,562.96	-785.35	1,458,513.860	3,168,290.079	40.590441	-104.894043	
12,900.00	89.00	89.91	6,977.41	-1,562.81	-685.36	1,458,514.018	3,168,390.064	40.590439	-104.893683	
13,000.00	89.00	89.91	6,979.15	-1,562.65	-585.38	1,458,514.176	3,168,490.049	40.590438	-104.893323	
13,100.00	89.00	89.91	6,980.89	-1,562.49	-485.39	1,458,514.334	3,168,590.033	40.590436	-104.892963	
13,200.00	89.00	89.91	6,982.63	-1,562.33	-385.41	1,458,514.491	3,168,690.019	40.590435	-104.892603	
13,300.00	89.00	89.91	6,984.37	-1,562.18	-285.43	1,458,514.649	3,168,790.004	40.590433	-104.892243	
13,400.00	89.00	89.91	6,986.11	-1,562.02	-185.44	1,458,514.807	3,168,889.989	40.590432	-104.891883	
13,500.00	89.00	89.91	6,987.85	-1,561.86	-85.46	1,458,514.964	3,168,989.973	40.590430	-104.891523	
13,600.00	89.00	89.91	6,989.59	-1,561.70	14.53	1,458,515.122	3,169,089.958	40.590429	-104.891163	
13,700.00	89.00	89.91	6,991.33	-1,561.55	114.51	1,458,515.280	3,169,189.943	40.590428	-104.890803	
13,800.00	89.00	89.91	6,993.07	-1,561.39	214.50	1,458,515.437	3,169,289.927	40.590426	-104.890443	
13,900.00	89.00	89.91	6,994.81	-1,561.23	314.48	1,458,515.595	3,169,389.912	40.590425	-104.890083	
14,000.00	89.00	89.91	6,996.55	-1,561.07	414.47	1,458,515.753	3,169,489.897	40.590423	-104.889723	
14,100.00	89.00	89.91	6,998.30	-1,560.91	514.45	1,458,515.911	3,169,589.882	40.590422	-104.889363	
14,200.00	89.00	89.91	7,000.04	-1,560.76	614.44	1,458,516.068	3,169,689.866	40.590420	-104.889003	
14,300.00	89.00	89.91	7,001.78	-1,560.60	714.42	1,458,516.226	3,169,789.851	40.590419	-104.888643	
14,400.00	89.00	89.91	7,003.52	-1,560.44	814.41	1,458,516.384	3,169,889.836	40.590417	-104.888283	
14,500.00	89.00	89.91	7,005.26	-1,560.28	914.39	1,458,516.541	3,169,989.820	40.590416	-104.887923	
14,600.00	89.00	89.91	7,007.00	-1,560.13	1,014.38	1,458,516.699	3,170,089.805	40.590414	-104.887563	
14,700.00	89.00	89.91	7,008.74	-1,559.97	1,114.36	1,458,516.857	3,170,189.790	40.590413	-104.887203	
14,800.00	89.00	89.91	7,010.48	-1,559.81	1,214.35	1,458,517.014	3,170,289.775	40.590412	-104.886843	
14,900.00	89.00	89.91	7,012.22	-1,559.65	1,314.33	1,458,517.172	3,170,389.759	40.590410	-104.886482	
15,000.00	89.00	89.91	7,013.96	-1,559.50	1,414.32	1,458,517.330	3,170,489.744	40.590409	-104.886122	
15,100.00	89.00	89.91	7,015.70	-1,559.34	1,514.30	1,458,517.488	3,170,589.729	40.590407	-104.885762	

Database:	EDM 5000.15 Single User Db	Local Co-ordinate Reference:	Well BLEHM-4X-HNC-10-07-67
Company:	Nickel Road Operating	TVD Reference:	KB @ 5115.00usft
Project:	Sec. 9-T7N-R67W	MD Reference:	KB @ 5115.00usft
Site:	BLEHM Pad	North Reference:	Grid
Well:	BLEHM-4X-HNC-10-07-67	Survey Calculation Method:	Minimum Curvature
Wellbore:	Wellbore #1		
Design:	Plan #2		

Planned Survey										
Measured Depth (usft)	Inclination (°)	Azimuth (°)	Vertical Depth (usft)	+N/-S (usft)	+E/-W (usft)	Map Northing (usft)	Map Easting (usft)	Latitude	Longitude	
15,200.00	89.00	89.91	7,017.44	-1,559.18	1,614.28	1,458,517.645	3,170,689.714	40.590406	-104.885402	
15,300.00	89.00	89.91	7,019.18	-1,559.02	1,714.27	1,458,517.803	3,170,789.698	40.590404	-104.885042	
15,400.00	89.00	89.91	7,020.92	-1,558.86	1,814.25	1,458,517.961	3,170,889.683	40.590403	-104.884682	
15,500.00	89.00	89.91	7,022.66	-1,558.71	1,914.24	1,458,518.118	3,170,989.668	40.590401	-104.884322	
15,600.00	89.00	89.91	7,024.40	-1,558.55	2,014.22	1,458,518.276	3,171,089.652	40.590400	-104.883962	
15,700.00	89.00	89.91	7,026.15	-1,558.39	2,114.21	1,458,518.434	3,171,189.637	40.590398	-104.883602	
15,800.00	89.00	89.91	7,027.89	-1,558.23	2,214.19	1,458,518.592	3,171,289.622	40.590397	-104.883242	
15,900.00	89.00	89.91	7,029.63	-1,558.08	2,314.18	1,458,518.749	3,171,389.607	40.590395	-104.882882	
16,000.00	89.00	89.91	7,031.37	-1,557.92	2,414.16	1,458,518.907	3,171,489.591	40.590394	-104.882522	
16,100.00	89.00	89.91	7,033.11	-1,557.76	2,514.15	1,458,519.065	3,171,589.576	40.590392	-104.882162	
16,200.00	89.00	89.91	7,034.85	-1,557.60	2,614.13	1,458,519.222	3,171,689.561	40.590391	-104.881802	
16,300.00	89.00	89.91	7,036.59	-1,557.45	2,714.12	1,458,519.380	3,171,789.545	40.590389	-104.881442	
16,400.00	89.00	89.91	7,038.33	-1,557.29	2,814.10	1,458,519.538	3,171,889.530	40.590388	-104.881082	
16,500.00	89.00	89.91	7,040.07	-1,557.13	2,914.09	1,458,519.695	3,171,989.515	40.590386	-104.880722	
16,600.00	89.00	89.91	7,041.81	-1,556.97	3,014.07	1,458,519.853	3,172,089.500	40.590385	-104.880362	
16,700.00	89.00	89.91	7,043.55	-1,556.81	3,114.06	1,458,520.011	3,172,189.484	40.590383	-104.880002	
16,800.00	89.00	89.91	7,045.29	-1,556.66	3,214.04	1,458,520.169	3,172,289.469	40.590382	-104.879642	
16,900.00	89.00	89.91	7,047.03	-1,556.50	3,314.03	1,458,520.326	3,172,389.454	40.590381	-104.879282	
17,000.00	89.00	89.91	7,048.77	-1,556.34	3,414.01	1,458,520.484	3,172,489.439	40.590379	-104.878922	
17,100.00	89.00	89.91	7,050.51	-1,556.18	3,513.99	1,458,520.642	3,172,589.423	40.590378	-104.878562	
17,200.00	89.00	89.91	7,052.25	-1,556.03	3,613.98	1,458,520.799	3,172,689.408	40.590376	-104.878202	
17,300.00	89.00	89.91	7,054.00	-1,555.87	3,713.96	1,458,520.957	3,172,789.393	40.590375	-104.877842	
17,400.00	89.00	89.91	7,055.74	-1,555.71	3,813.95	1,458,521.115	3,172,889.377	40.590373	-104.877482	
17,500.00	89.00	89.91	7,057.48	-1,555.55	3,913.93	1,458,521.273	3,172,989.362	40.590372	-104.877122	
17,600.00	89.00	89.91	7,059.22	-1,555.40	4,013.92	1,458,521.430	3,173,089.347	40.590370	-104.876762	
17,700.00	89.00	89.91	7,060.96	-1,555.24	4,113.90	1,458,521.588	3,173,189.332	40.590369	-104.876402	
17,800.00	89.00	89.91	7,062.70	-1,555.08	4,213.89	1,458,521.746	3,173,289.316	40.590367	-104.876042	
17,900.00	89.00	89.91	7,064.44	-1,554.92	4,313.87	1,458,521.903	3,173,389.301	40.590366	-104.875682	
18,000.00	89.00	89.91	7,066.18	-1,554.76	4,413.86	1,458,522.061	3,173,489.286	40.590364	-104.875322	
18,100.00	89.00	89.91	7,067.92	-1,554.61	4,513.84	1,458,522.219	3,173,589.270	40.590363	-104.874962	
18,200.00	89.00	89.91	7,069.66	-1,554.45	4,613.83	1,458,522.376	3,173,689.255	40.590361	-104.874602	
18,300.00	89.00	89.91	7,071.40	-1,554.29	4,713.81	1,458,522.534	3,173,789.240	40.590360	-104.874242	
18,400.00	89.00	89.91	7,073.14	-1,554.13	4,813.80	1,458,522.692	3,173,889.225	40.590358	-104.873882	
18,500.00	89.00	89.91	7,074.88	-1,553.98	4,913.78	1,458,522.850	3,173,989.209	40.590357	-104.873522	
18,600.00	89.00	89.91	7,076.62	-1,553.82	5,013.77	1,458,523.007	3,174,089.194	40.590355	-104.873162	
18,700.00	89.00	89.91	7,078.36	-1,553.66	5,113.75	1,458,523.165	3,174,189.179	40.590354	-104.872802	
18,800.00	89.00	89.91	7,080.10	-1,553.50	5,213.73	1,458,523.323	3,174,289.163	40.590352	-104.872442	
18,900.00	89.00	89.91	7,081.84	-1,553.34	5,313.72	1,458,523.480	3,174,389.148	40.590351	-104.872082	
19,000.00	89.00	89.91	7,083.59	-1,553.19	5,413.70	1,458,523.638	3,174,489.133	40.590349	-104.871722	
19,092.23	89.00	89.91	7,085.00	-1,552.88	5,505.92	1,458,523.947	3,174,581.353	40.590348	-104.871390	

TD at 19092.23 - BHL 4X-HNC 2026 FNL 460 FEL

Database:	EDM 5000.15 Single User Db	Local Co-ordinate Reference:	Well BLEHM-4X-HNC-10-07-67
Company:	Nickel Road Operating	TVD Reference:	KB @ 5115.00usft
Project:	Sec. 9-T7N-R67W	MD Reference:	KB @ 5115.00usft
Site:	BLEHM Pad	North Reference:	Grid
Well:	BLEHM-4X-HNC-10-07-67	Survey Calculation Method:	Minimum Curvature
Wellbore:	Wellbore #1		
Design:	Plan #2		

Design Targets										
Target Name	Dip Angle	Dip Dir.	TVD	+N/-S	+E/-W	Northing	Easting	Latitude	Longitude	
- hit/miss target	(°)	(°)	(usft)	(usft)	(usft)	(usft)	(usft)			
- Shape										
SHL 4X-HNC 452 FNL 7 - plan misses target center by 0.02usft at 0.00usft MD (0.00 TVD, 0.00 N, 0.00 E) - Point	0.00	0.00	0.00	0.02	0.00	1,460,076.845	3,169,075.429	40.594716	-104.891176	
LPL 4X-HNC 2026 FNL - plan misses target center by 9.15usft at 9499.77usft MD (6909.85 TVD, -1564.71 N, -4084.39 E) - Point	0.00	0.00	6,918.00	-1,568.01	-4,086.93	1,458,508.817	3,164,988.502	40.590488	-104.905930	
BHL 4X-HNC 2026 FNL - plan hits target center - Point	0.00	0.00	7,085.00	-1,552.88	5,505.92	1,458,523.947	3,174,581.353	40.590348	-104.871390	

Plan Annotations					
Measured Depth	Vertical Depth	Local Coordinates		Comment	
(usft)	(usft)	+N/-S (usft)	+E/-W (usft)		
1,500.00	1,500.00	0.00	0.00	Surf Csg	
1,600.00	1,600.00	0.00	0.00	Start Build 2.00	
4,513.01	4,036.35	-357.27	-1,309.88	Hold 58.26 Inc, 254.74 Az	
8,159.39	5,954.58	-1,173.28	-4,301.64	KOP 10°/100	
9,601.86	6,920.00	-1,568.01	-3,983.00	LP 89.00 Inc, 89.91 Az	
19,092.23	7,085.00	-1,552.88	5,505.92	TD at 19092.23	