

CONFLUENCE RESOURCES

| | | | |
|---|---------------------------------|--|---|
| Location: | COLORADO | Slot: | SLOT#20 Desha 4-1-3L (620'FSL & 993'FWL,SEC.34) |
| Field: | WELD COUNTY (NAD83, TRUE NORTH) | Well: | Desha 4-1-3L |
| Facility: | SEC.34-T01N-R65W | Wellbore: | Desha 4-1-3L PWB |
| Plot reference wellpath is Desha 4-1-3L PWP RevA.0 | | Grid System: NAD83 / Lambert Colorado SP, Northern Zone (501), US feet | |
| True vertical depths are referenced to Rig (20.5) (RT) | | North Reference: True north | |
| Reference wellpath measured depths are referenced to Rig (20.5) (RT) | | Scale: True distance | |
| Rig (20.5) (RT) to Mean Sea Level: 5159.5 feet | | Coordinates are in feet referenced to Slot | |
| Mean Sea Level to Mud line (At Slot: SLOT#20 Desha 4-1-3L (620'FSL & 993'FWL,SEC.34)): 0 feet | | Depths are in feet | |
| Offset wellpath MDs are referenced to each path's default MD datum | | Created by: painstr on 2020-10-07, Database: WA_Denver | |

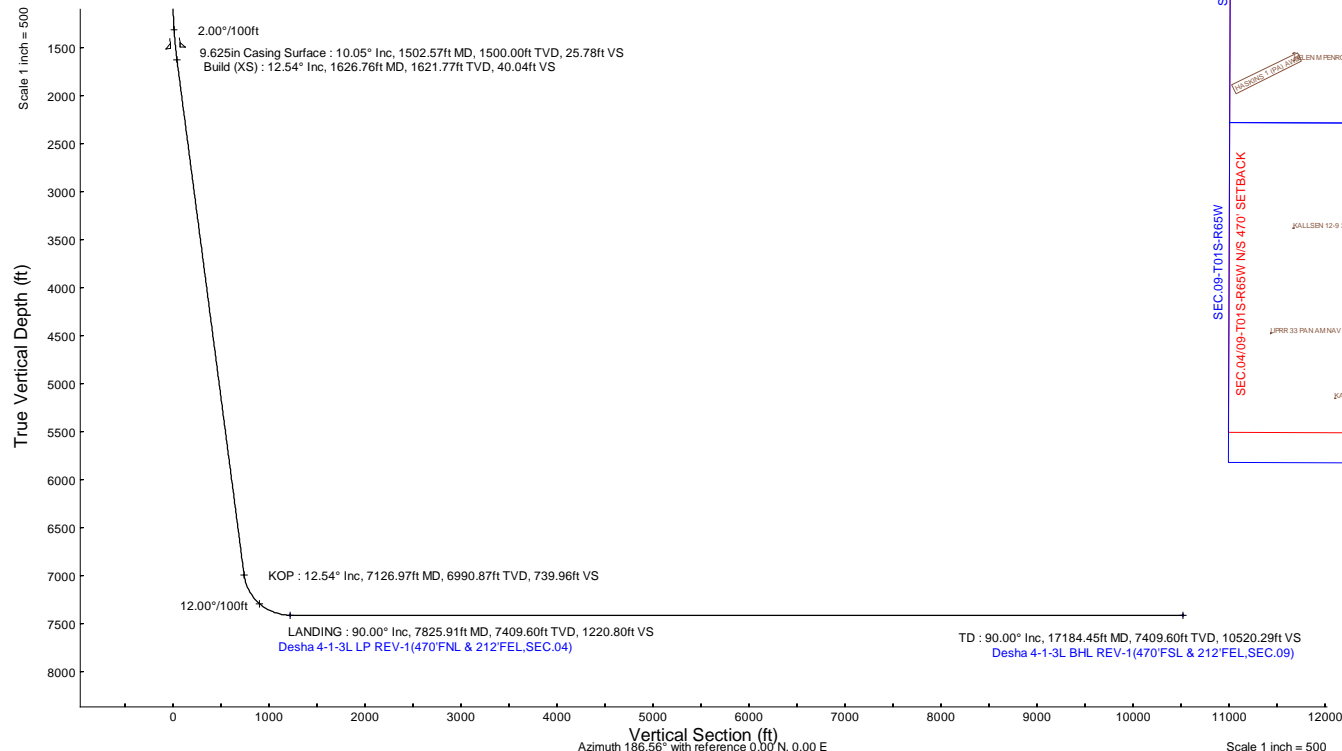
| Location Information | | | | | |
|--|--------------|-------------------|--------------------|--------------------|-----------------|
| Facility Name | | Grid East (US ft) | Grid North (US ft) | Latitude | Longitude |
| SEC.34-T01N-R65W | | 3236186.141 | 1244789.256 | 40°00'8.100"N | 104°39'24.840"W |
| Slot | Local N (ft) | Local E (ft) | Grid East (US ft) | Grid North (US ft) | Latitude |
| SLOT#20 Desha 4-1-3L (620'FSL & 993'FWL,SEC.34) | 0.00 | 252.14 | 3236438.259 | 1244791.655 | 40°00'8.100"N |
| Rig (20.5) (RT) to Mud line (At Slot: SLOT#20 Desha 4-1-3L (620'FSL & 993'FWL,SEC.34)) | | 5159.5R | | 0R | |
| Mean Sea Level to Mud line (At Slot: SLOT#20 Desha 4-1-3L (620'FSL & 993'FWL,SEC.34)) | | 0R | | 5159.5R | |
| Rig (20.5) (RT) to Mean Sea Level | | 0R | | 5159.5R | |

| Survey Program | | | | | |
|----------------|-------------|---------------------------------|---|------------------|------------------|
| Start MD (ft) | End MD (ft) | Tool | Model | Log Name/Comment | Wellbore |
| 20.50 | 1502.57 | BH NavTrak (2019) | BH NavTrak (2019) (Axial) | | Desha 4-1-3L PWB |
| 1502.57 | 17198.91 | BH AutoTrak Curve/xpress (2019) | BH AutoTrak Curve/xpress (2019) (Short spacing) | | Desha 4-1-3L PWB |

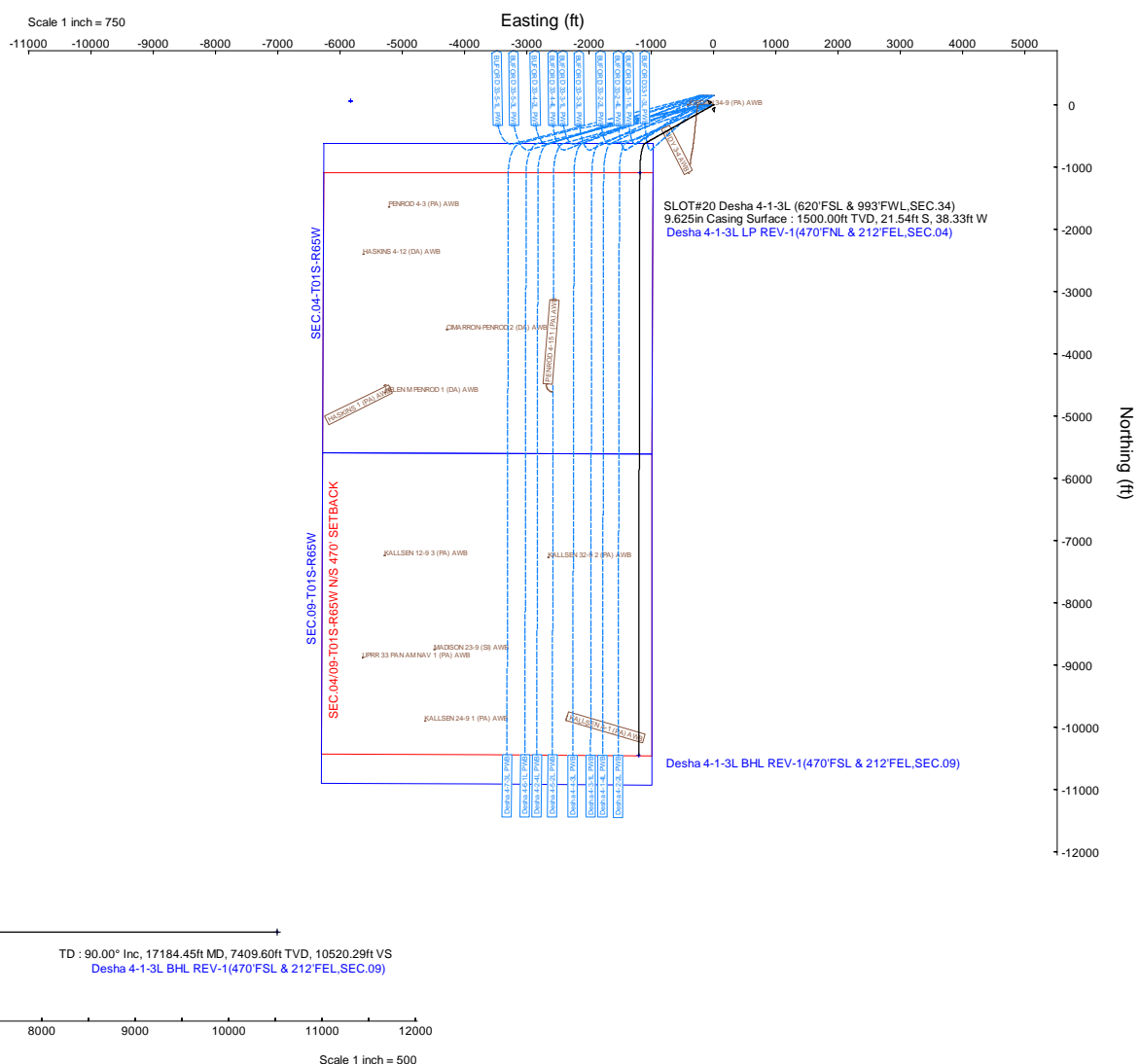
| Hole and Casing Sections | | | | | | | | | |
|--------------------------|---------------|-------------|---------------|----------------|--------------|--------------------|--------------------|------------------|------------------|
| Name | Start MD (ft) | End MD (ft) | Interval (ft) | Start TVD (ft) | End TVD (ft) | Start Local N (ft) | Start Local E (ft) | End Local N (ft) | End Local E (ft) |
| 9.625in Casing Surface | 20.50 | 1502.57 | 1482.07 | 20.50 | 1500.00 | 0.00 | 0.00 | -21.54 | -38.33 |

| Bottom Hole Location | | | | | | | | | |
|----------------------|---------|---------|----------|--------------|--------------|-------------------|--------------------|-----------------|------------------|
| MD (ft) | Inc (°) | Az (°) | TVD (ft) | Local N (ft) | Local E (ft) | Grid East (US ft) | Grid North (US ft) | Latitude | Longitude |
| 17184.45 | 90.000 | 180.123 | 7409.60 | -10451.35 | -1202.37 | 3235335.46 | 1234329.71 | 39°58'24.8160"N | 104°39'37.0440"W |

| Targets | | | | | | | | | |
|--|----------|----------|--------------|--------------|-------------------|--------------------|-----------------|------------------|--|
| Name | MD (ft) | TVD (ft) | Local N (ft) | Local E (ft) | Grid East (US ft) | Grid North (US ft) | Latitude | Longitude | |
| SEC.04-T01S-R65W | N/A | 61.00 | 62.61 | -5627.20 | 3230610.94 | 1244798.80 | 40°00'8.7120"N | 104°40'36.4800"W | |
| SEC.0409-T01S-R65W NIS 470' SETBACK | N/A | 61.00 | 62.61 | -5627.20 | 3230610.94 | 1244798.80 | 40°00'8.7120"N | 104°40'36.4800"W | |
| SEC.09-T01S-R65W | N/A | 61.00 | 62.61 | -5627.20 | 3230610.94 | 1244798.80 | 40°00'8.7120"N | 104°40'36.4800"W | |
| Desha 4-1-3L BHL REV-1(470'FSL & 212'FEL,SEC.09) | 17184.45 | 7409.60 | -10451.35 | -1202.37 | 3235335.46 | 1234329.71 | 39°58'24.8160"N | 104°39'37.0440"W | |
| Desha 4-1-3L LP REV-1(470'FSL & 212'FEL,SEC.04) | 7825.91 | 7409.60 | -1092.83 | -1182.30 | 3235266.45 | 1243687.66 | 39°59'57.3000"N | 104°39'36.7920"W | |



| Well Profile Data | | | | | | | | |
|-------------------|----------|---------|---------|----------|--------------|--------------|---------------|----------|
| Design Comment | MD (ft) | Inc (°) | Az (°) | TVD (ft) | Local N (ft) | Local E (ft) | DLS (°/100ft) | VS (ft) |
| Tie On | 20.50 | 0.000 | 240.666 | 20.50 | 0.00 | 0.00 | 0.00 | 0.00 |
| End of Tangent | 1000.00 | 0.000 | 240.666 | 1000.00 | 0.00 | 0.00 | 0.00 | 0.00 |
| Build (XS) | 1626.76 | 12.535 | 240.666 | 1621.77 | -33.45 | -59.53 | 2.00 | 40.04 |
| KOP | 7126.97 | 12.535 | 240.666 | 6990.87 | -618.27 | -1100.22 | 0.00 | 739.96 |
| LANDING | 7825.91 | 90.000 | 180.123 | 7409.60 | -1092.83 | -1182.30 | 12.00 | 1220.80 |
| TD | 17184.45 | 90.000 | 180.123 | 7409.60 | -10451.35 | -1202.37 | 0.00 | 10520.29 |



Planned Wellpath Report

Desha 4-1-3L PWP Rev-A.0

Page 1 of 7

REFERENCE WELLPATH IDENTIFICATION

| | | | |
|----------|---|-----------|------------------|
| Operator | CONFLUENCE RESOURCES | Well | Desha 4-1-3L |
| Field | WELD COUNTY (NAD83, TRUE NORTH) | API/Legal | |
| Facility | SEC.34-T01N-R65W | Wellbore | Desha 4-1-3L PWB |
| Slot | SLOT#20 Desha 4-1-3L (620'FSL & 993'FWL,SEC.34) | | |

REPORT SETUP INFORMATION

| | | | |
|---------------------|---|------------------|-------------------------|
| Projection System | NAD83 / Lambert Colorado SP, Northern Zone (501), US feet | Software System | WellArchitect® 6.0 |
| North Reference | True | User | Painsetr |
| Scale | 0.999966 | Report Generated | 10/7/2020 at 1:43:20 PM |
| Convergence at slot | 0.55° East | Database | WA_Denver |

WELLPATH LOCATION

| | Local coordinates | | Grid coordinates | | Geographic coordinates | |
|-----------------------|-------------------|----------|------------------|-----------------|------------------------|---------------|
| | North[ft] | East[ft] | Easting[US ft] | Northing[US ft] | Latitude | Longitude |
| Slot Location | 0.00 | 252.14 | 3236438.26 | 1244791.66 | 40.0022500° | -104.6560000° |
| Facility Reference Pt | | | 3236186.14 | 1244789.26 | 40.0022500° | -104.6569000° |
| Field Reference Pt | | | 3230456.90 | 1245096.09 | 40.0032400° | -104.6773400° |

WELLPATH DATUM

| | | | |
|--------------------------|-------------------|--|-------------------|
| Calculation method | Minimum curvature | Rig (20.5') (RT) to Facility Vertical Datum | 5159.50ft |
| Horizontal Reference Pt | Slot | Rig (20.5') (RT) to Mean Sea Level | 5159.50ft |
| Vertical Reference Pt | Rig (20.5') (RT) | Rig (20.5') (RT) to Mud Line at Slot (SLOT#20 Desha 4-1-3L (620'FSL & 993'FWL,SEC.34)) | 5159.50ft |
| MD Reference Pt | Rig (20.5') (RT) | Section Origin | N 0.00, E 0.00 ft |
| Field Vertical Reference | Mean Sea Level | Section Azimuth | 186.56° |

Planned Wellpath Report

Desha 4-1-3L PWP Rev-A.0

Page 2 of 7

REFERENCE WELLPATH IDENTIFICATION

| | | | |
|----------|---|-----------|------------------|
| Operator | CONFLUENCE RESOURCES | Well | Desha 4-1-3L |
| Field | WELD COUNTY (NAD83, TRUE NORTH) | API/Legal | |
| Facility | SEC.34-T01N-R65W | Wellbore | Desha 4-1-3L PWB |
| Slot | SLOT#20 Desha 4-1-3L (620'FSL & 993'FWL,SEC.34) | | |

WELLPATH DATA (178 stations) † = interpolated, ‡ = extrapolated station

| MD [ft] | Inclination [°] | Azimuth [°] | TVD [ft] | Vert Sect [ft] | North [ft] | East [ft] | Grid East [US ft] | Grid North [US ft] | Latitude | Longitude | DLS [°/100ft] | Comments |
|----------|-----------------|-------------|----------|----------------|------------|-----------|-------------------|--------------------|------------|--------------|---------------|----------------|
| 0.00† | 0.000 | 240.666 | 0.00 | 0.00 | 0.00 | 0.00 | 3236438.26 | 1244791.65 | 40.0022500 | -104.6560000 | 0.00 | |
| 20.50 | 0.000 | 240.666 | 20.50 | 0.00 | 0.00 | 0.00 | 3236438.26 | 1244791.65 | 40.0022500 | -104.6560000 | 0.00 | Tie On |
| 120.50† | 0.000 | 240.666 | 120.50 | 0.00 | 0.00 | 0.00 | 3236438.26 | 1244791.65 | 40.0022500 | -104.6560000 | 0.00 | |
| 220.50† | 0.000 | 240.666 | 220.50 | 0.00 | 0.00 | 0.00 | 3236438.26 | 1244791.65 | 40.0022500 | -104.6560000 | 0.00 | |
| 320.50† | 0.000 | 240.666 | 320.50 | 0.00 | 0.00 | 0.00 | 3236438.26 | 1244791.65 | 40.0022500 | -104.6560000 | 0.00 | |
| 420.50† | 0.000 | 240.666 | 420.50 | 0.00 | 0.00 | 0.00 | 3236438.26 | 1244791.65 | 40.0022500 | -104.6560000 | 0.00 | |
| 520.50† | 0.000 | 240.666 | 520.50 | 0.00 | 0.00 | 0.00 | 3236438.26 | 1244791.65 | 40.0022500 | -104.6560000 | 0.00 | |
| 620.50† | 0.000 | 240.666 | 620.50 | 0.00 | 0.00 | 0.00 | 3236438.26 | 1244791.65 | 40.0022500 | -104.6560000 | 0.00 | |
| 720.50† | 0.000 | 240.666 | 720.50 | 0.00 | 0.00 | 0.00 | 3236438.26 | 1244791.65 | 40.0022500 | -104.6560000 | 0.00 | |
| 820.50† | 0.000 | 240.666 | 820.50 | 0.00 | 0.00 | 0.00 | 3236438.26 | 1244791.65 | 40.0022500 | -104.6560000 | 0.00 | |
| 920.50† | 0.000 | 240.666 | 920.50 | 0.00 | 0.00 | 0.00 | 3236438.26 | 1244791.65 | 40.0022500 | -104.6560000 | 0.00 | |
| 1000.00 | 0.000 | 240.666 | 1000.00 | 0.00 | 0.00 | 0.00 | 3236438.26 | 1244791.65 | 40.0022500 | -104.6560000 | 0.00 | End of Tangent |
| 1020.50† | 0.410 | 240.666 | 1020.50 | 0.04 | -0.04 | -0.06 | 3236438.20 | 1244791.62 | 40.0022499 | -104.6560002 | 2.00 | |
| 1120.50† | 2.410 | 240.666 | 1120.46 | 1.49 | -1.24 | -2.21 | 3236436.06 | 1244790.39 | 40.0022466 | -104.6560079 | 2.00 | |
| 1220.50† | 4.410 | 240.666 | 1220.28 | 4.97 | -4.16 | -7.39 | 3236430.91 | 1244787.43 | 40.0022386 | -104.6560264 | 2.00 | |
| 1320.50† | 6.410 | 240.666 | 1319.83 | 10.50 | -8.77 | -15.61 | 3236422.73 | 1244782.73 | 40.0022259 | -104.6560557 | 2.00 | |
| 1420.50† | 8.410 | 240.666 | 1418.99 | 18.06 | -15.09 | -26.86 | 3236411.55 | 1244776.31 | 40.0022086 | -104.6560959 | 2.00 | |
| 1520.50† | 10.410 | 240.666 | 1517.64 | 27.65 | -23.10 | -41.11 | 3236397.37 | 1244768.16 | 40.0021866 | -104.6561467 | 2.00 | |
| 1620.50† | 12.410 | 240.666 | 1615.66 | 39.25 | -32.79 | -58.35 | 3236380.22 | 1244758.31 | 40.0021600 | -104.6562083 | 2.00 | |
| 1626.76 | 12.535 | 240.666 | 1621.77 | 40.04 | -33.45 | -59.53 | 3236379.05 | 1244757.64 | 40.0021582 | -104.6562125 | 2.00 | Build (XS) |
| 1720.50† | 12.535 | 240.666 | 1713.28 | 51.97 | -43.42 | -77.27 | 3236361.41 | 1244747.50 | 40.0021308 | -104.6562758 | 0.00 | |
| 1820.50† | 12.535 | 240.666 | 1810.89 | 64.69 | -54.05 | -96.19 | 3236342.59 | 1244736.69 | 40.0021016 | -104.6563433 | 0.00 | |
| 1920.50† | 12.535 | 240.666 | 1908.51 | 77.42 | -64.69 | -115.11 | 3236323.77 | 1244725.88 | 40.0020724 | -104.6564109 | 0.00 | |
| 2020.50† | 12.535 | 240.666 | 2006.13 | 90.14 | -75.32 | -134.03 | 3236304.96 | 1244715.07 | 40.0020432 | -104.6564784 | 0.00 | |
| 2120.50† | 12.535 | 240.666 | 2103.74 | 102.87 | -85.95 | -152.95 | 3236286.14 | 1244704.25 | 40.0020141 | -104.6565460 | 0.00 | |
| 2220.50† | 12.535 | 240.666 | 2201.36 | 115.60 | -96.58 | -171.87 | 3236267.32 | 1244693.44 | 40.0019849 | -104.6566135 | 0.00 | |
| 2320.50† | 12.535 | 240.666 | 2298.98 | 128.32 | -107.22 | -190.79 | 3236248.50 | 1244682.63 | 40.0019557 | -104.6566810 | 0.00 | |
| 2420.50† | 12.535 | 240.666 | 2396.59 | 141.05 | -117.85 | -209.72 | 3236229.68 | 1244671.82 | 40.0019265 | -104.6567486 | 0.00 | |
| 2520.50† | 12.535 | 240.666 | 2494.21 | 153.77 | -128.48 | -228.64 | 3236210.86 | 1244661.01 | 40.0018973 | -104.6568161 | 0.00 | |
| 2620.50† | 12.535 | 240.666 | 2591.82 | 166.50 | -139.11 | -247.56 | 3236192.05 | 1244650.19 | 40.0018681 | -104.6568836 | 0.00 | |
| 2720.50† | 12.535 | 240.666 | 2689.44 | 179.22 | -149.75 | -266.48 | 3236173.23 | 1244639.38 | 40.0018389 | -104.6569512 | 0.00 | |
| 2820.50† | 12.535 | 240.666 | 2787.06 | 191.95 | -160.38 | -285.40 | 3236154.41 | 1244628.57 | 40.0018097 | -104.6570187 | 0.00 | |
| 2920.50† | 12.535 | 240.666 | 2884.67 | 204.67 | -171.01 | -304.32 | 3236135.59 | 1244617.76 | 40.0017805 | -104.6570863 | 0.00 | |
| 3020.50† | 12.535 | 240.666 | 2982.29 | 217.40 | -181.65 | -323.24 | 3236116.77 | 1244606.95 | 40.0017514 | -104.6571538 | 0.00 | |
| 3120.50† | 12.535 | 240.666 | 3079.91 | 230.12 | -192.28 | -342.16 | 3236097.96 | 1244596.14 | 40.0017222 | -104.6572213 | 0.00 | |
| 3220.50† | 12.535 | 240.666 | 3177.52 | 242.85 | -202.91 | -361.08 | 3236079.14 | 1244585.32 | 40.0016930 | -104.6572889 | 0.00 | |
| 3320.50† | 12.535 | 240.666 | 3275.14 | 255.57 | -213.54 | -380.00 | 3236060.32 | 1244574.51 | 40.0016638 | -104.6573564 | 0.00 | |
| 3420.50† | 12.535 | 240.666 | 3372.76 | 268.30 | -224.18 | -398.92 | 3236041.50 | 1244563.70 | 40.0016346 | -104.6574239 | 0.00 | |
| 3520.50† | 12.535 | 240.666 | 3470.37 | 281.03 | -234.81 | -417.85 | 3236022.68 | 1244552.89 | 40.0016054 | -104.6574915 | 0.00 | |
| 3620.50† | 12.535 | 240.666 | 3567.99 | 293.75 | -245.44 | -436.77 | 3236003.86 | 1244542.08 | 40.0015762 | -104.6575590 | 0.00 | |
| 3720.50† | 12.535 | 240.666 | 3665.60 | 306.48 | -256.07 | -455.69 | 3235985.05 | 1244531.26 | 40.0015470 | -104.6576265 | 0.00 | |
| 3820.50† | 12.535 | 240.666 | 3763.22 | 319.20 | -266.71 | -474.61 | 3235966.23 | 1244520.45 | 40.0015179 | -104.6576941 | 0.00 | |
| 3920.50† | 12.535 | 240.666 | 3860.84 | 331.93 | -277.34 | -493.53 | 3235947.41 | 1244509.64 | 40.0014887 | -104.6577616 | 0.00 | |
| 4020.50† | 12.535 | 240.666 | 3958.45 | 344.65 | -287.97 | -512.45 | 3235928.59 | 1244498.83 | 40.0014595 | -104.6578291 | 0.00 | |
| 4120.50† | 12.535 | 240.666 | 4056.07 | 357.38 | -298.60 | -531.37 | 3235909.77 | 1244488.02 | 40.0014303 | -104.6578967 | 0.00 | |

Planned Wellpath Report

Desha 4-1-3L PWP Rev-A.0

Page 3 of 7

REFERENCE WELLPATH IDENTIFICATION

| | | | |
|----------|---|-----------|------------------|
| Operator | CONFLUENCE RESOURCES | Well | Desha 4-1-3L |
| Field | WELD COUNTY (NAD83, TRUE NORTH) | API/Legal | |
| Facility | SEC.34-T01N-R65W | Wellbore | Desha 4-1-3L PWB |
| Slot | SLOT#20 Desha 4-1-3L (620'FSL & 993'FWL,SEC.34) | | |

WELLPATH DATA (178 stations) † = interpolated, ‡ = extrapolated station

| MD [ft] | Inclination [°] | Azimuth [°] | TVD [ft] | Vert Sect [ft] | North [ft] | East [ft] | Grid East [US ft] | Grid North [US ft] | Latitude | Longitude | DLS [°/100ft] | Comments |
|------------|--------------------|----------------|-------------|-------------------|---------------|--------------|----------------------|-----------------------|------------|--------------|------------------|----------|
| 4220.50† | 12.535 | 240.666 | 4153.69 | 370.10 | -309.24 | -550.29 | 3235890.96 | 1244477.21 | 40.0014011 | -104.6579642 | 0.00 | |
| 4320.50† | 12.535 | 240.666 | 4251.30 | 382.83 | -319.87 | -569.21 | 3235872.14 | 1244466.39 | 40.0013719 | -104.6580318 | 0.00 | |
| 4420.50† | 12.535 | 240.666 | 4348.92 | 395.55 | -330.50 | -588.13 | 3235853.32 | 1244455.58 | 40.0013427 | -104.6580993 | 0.00 | |
| 4520.50† | 12.535 | 240.666 | 4446.53 | 408.28 | -341.13 | -607.05 | 3235834.50 | 1244444.77 | 40.0013135 | -104.6581668 | 0.00 | |
| 4620.50† | 12.535 | 240.666 | 4544.15 | 421.01 | -351.77 | -625.98 | 3235815.68 | 1244433.96 | 40.0012843 | -104.6582344 | 0.00 | |
| 4720.50† | 12.535 | 240.666 | 4641.77 | 433.73 | -362.40 | -644.90 | 3235796.86 | 1244423.15 | 40.0012552 | -104.6583019 | 0.00 | |
| 4820.50† | 12.535 | 240.666 | 4739.38 | 446.46 | -373.03 | -663.82 | 3235778.05 | 1244412.33 | 40.0012260 | -104.6583694 | 0.00 | |
| 4920.50† | 12.535 | 240.666 | 4837.00 | 459.18 | -383.67 | -682.74 | 3235759.23 | 1244401.52 | 40.0011968 | -104.6584370 | 0.00 | |
| 5020.50† | 12.535 | 240.666 | 4934.62 | 471.91 | -394.30 | -701.66 | 3235740.41 | 1244390.71 | 40.0011676 | -104.6585045 | 0.00 | |
| 5120.50† | 12.535 | 240.666 | 5032.23 | 484.63 | -404.93 | -720.58 | 3235721.59 | 1244379.90 | 40.0011384 | -104.6585720 | 0.00 | |
| 5220.50† | 12.535 | 240.666 | 5129.85 | 497.36 | -415.56 | -739.50 | 3235702.77 | 1244369.09 | 40.0011092 | -104.6586396 | 0.00 | |
| 5320.50† | 12.535 | 240.666 | 5227.47 | 510.08 | -426.20 | -758.42 | 3235683.96 | 1244358.28 | 40.0010800 | -104.6587071 | 0.00 | |
| 5420.50† | 12.535 | 240.666 | 5325.08 | 522.81 | -436.83 | -777.34 | 3235665.14 | 1244347.46 | 40.0010508 | -104.6587746 | 0.00 | |
| 5520.50† | 12.535 | 240.666 | 5422.70 | 535.53 | -447.46 | -796.26 | 3235646.32 | 1244336.65 | 40.0010216 | -104.6588422 | 0.00 | |
| 5620.50† | 12.535 | 240.666 | 5520.31 | 548.26 | -458.09 | -815.18 | 3235627.50 | 1244325.84 | 40.0009925 | -104.6589097 | 0.00 | |
| 5720.50† | 12.535 | 240.666 | 5617.93 | 560.98 | -468.73 | -834.11 | 3235608.68 | 1244315.03 | 40.0009633 | -104.6589773 | 0.00 | |
| 5820.50† | 12.535 | 240.666 | 5715.55 | 573.71 | -479.36 | -853.03 | 3235589.86 | 1244304.22 | 40.0009341 | -104.6590448 | 0.00 | |
| 5920.50† | 12.535 | 240.666 | 5813.16 | 586.44 | -489.99 | -871.95 | 3235571.05 | 1244293.40 | 40.0009049 | -104.6591123 | 0.00 | |
| 6020.50† | 12.535 | 240.666 | 5910.78 | 599.16 | -500.62 | -890.87 | 3235552.23 | 1244282.59 | 40.0008757 | -104.6591799 | 0.00 | |
| 6120.50† | 12.535 | 240.666 | 6008.40 | 611.89 | -511.26 | -909.79 | 3235533.41 | 1244271.78 | 40.0008465 | -104.6592474 | 0.00 | |
| 6220.50† | 12.535 | 240.666 | 6106.01 | 624.61 | -521.89 | -928.71 | 3235514.59 | 1244260.97 | 40.0008173 | -104.6593149 | 0.00 | |
| 6320.50† | 12.535 | 240.666 | 6203.63 | 637.34 | -532.52 | -947.63 | 3235495.77 | 1244250.16 | 40.0007881 | -104.6593825 | 0.00 | |
| 6420.50† | 12.535 | 240.666 | 6301.24 | 650.06 | -543.15 | -966.55 | 3235476.96 | 1244239.35 | 40.0007589 | -104.6594500 | 0.00 | |
| 6520.50† | 12.535 | 240.666 | 6398.86 | 662.79 | -553.79 | -985.47 | 3235458.14 | 1244228.53 | 40.0007298 | -104.6595175 | 0.00 | |
| 6620.50† | 12.535 | 240.666 | 6496.48 | 675.51 | -564.42 | -1004.39 | 3235439.32 | 1244217.72 | 40.0007006 | -104.6595851 | 0.00 | |
| 6720.50† | 12.535 | 240.666 | 6594.09 | 688.24 | -575.05 | -1023.31 | 3235420.50 | 1244206.91 | 40.0006714 | -104.6596526 | 0.00 | |
| 6820.50† | 12.535 | 240.666 | 6691.71 | 700.96 | -585.68 | -1042.24 | 3235401.68 | 1244196.10 | 40.0006422 | -104.6597201 | 0.00 | |
| 6920.50† | 12.535 | 240.666 | 6789.33 | 713.69 | -596.32 | -1061.16 | 3235382.86 | 1244185.29 | 40.0006130 | -104.6597877 | 0.00 | |
| 7020.50† | 12.535 | 240.666 | 6886.94 | 726.42 | -606.95 | -1080.08 | 3235364.05 | 1244174.47 | 40.0005838 | -104.6598552 | 0.00 | |
| 7120.50† | 12.535 | 240.666 | 6984.56 | 739.14 | -617.58 | -1099.00 | 3235345.23 | 1244163.66 | 40.0005546 | -104.6599227 | 0.00 | |
| 7126.97 | 12.535 | 240.666 | 6990.87 | 739.96 | -618.27 | -1100.22 | 3235344.01 | 1244162.96 | 40.0005527 | -104.6599271 | 0.00 | KOP |
| 7220.50† | 20.431 | 211.436 | 7080.64 | 760.79 | -637.23 | -1117.64 | 3235326.77 | 1244143.84 | 40.0005007 | -104.6599893 | 12.00 | |
| 7320.50† | 31.158 | 198.797 | 7170.61 | 802.06 | -676.76 | -1135.14 | 3235309.65 | 1244104.15 | 40.0003922 | -104.6600517 | 12.00 | |
| 7420.50† | 42.524 | 192.309 | 7250.54 | 861.18 | -734.48 | -1150.74 | 3235294.60 | 1244046.28 | 40.0002337 | -104.6601074 | 12.00 | |
| 7520.50† | 54.124 | 188.172 | 7316.93 | 935.58 | -807.87 | -1163.75 | 3235282.29 | 1243972.78 | 40.0000323 | -104.6601538 | 12.00 | |
| 7620.50† | 65.829 | 185.107 | 7366.89 | 1022.00 | -893.72 | -1173.61 | 3235273.25 | 1243886.84 | 39.9997966 | -104.6601890 | 12.00 | |
| 7720.50† | 77.585 | 182.565 | 7398.22 | 1116.66 | -988.28 | -1179.88 | 3235267.88 | 1243792.22 | 39.9995370 | -104.6602114 | 12.00 | |
| 7820.50† | 89.363 | 180.246 | 7409.57 | 1215.42 | -1087.43 | -1182.29 | 3235266.42 | 1243693.07 | 39.9992648 | -104.6602199 | 12.00 | |
| 7825.91 | 90.000 | 180.123 | 7409.60† | 1220.80 | -1092.83 | -1182.30 | 3235266.45 | 1243687.66 | 39.9992500 | -104.6602200 | 12.00 | LANDING |
| 7920.50† | 90.000 | 180.123 | 7409.60 | 1314.79 | -1187.42 | -1182.51 | 3235267.15 | 1243593.07 | 39.9989903 | -104.6602207 | 0.00 | |
| 8020.50† | 90.000 | 180.123 | 7409.60 | 1414.16 | -1287.42 | -1182.72 | 3235267.89 | 1243493.08 | 39.9987158 | -104.6602215 | 0.00 | |
| 8120.50† | 90.000 | 180.123 | 7409.60 | 1513.53 | -1387.42 | -1182.94 | 3235268.62 | 1243393.08 | 39.9984413 | -104.6602222 | 0.00 | |
| 8220.50† | 90.000 | 180.123 | 7409.60 | 1612.90 | -1487.42 | -1183.15 | 3235269.36 | 1243293.09 | 39.9981668 | -104.6602230 | 0.00 | |
| 8320.50† | 90.000 | 180.123 | 7409.60 | 1712.27 | -1587.42 | -1183.36 | 3235270.10 | 1243193.10 | 39.9978923 | -104.6602237 | 0.00 | |
| 8420.50† | 90.000 | 180.123 | 7409.60 | 1811.64 | -1687.42 | -1183.58 | 3235270.84 | 1243093.10 | 39.9976178 | -104.6602244 | 0.00 | |

Planned Wellpath Report

Desha 4-1-3L PWP Rev-A.0

Page 4 of 7

REFERENCE WELLPATH IDENTIFICATION

| | | | |
|----------|---|-----------|------------------|
| Operator | CONFLUENCE RESOURCES | Well | Desha 4-1-3L |
| Field | WELD COUNTY (NAD83, TRUE NORTH) | API/Legal | |
| Facility | SEC.34-T01N-R65W | Wellbore | Desha 4-1-3L PWB |
| Slot | SLOT#20 Desha 4-1-3L (620'FSL & 993'FWL,SEC.34) | | |

WELLPATH DATA (178 stations) † = interpolated, ‡ = extrapolated station

| MD [ft] | Inclination [°] | Azimuth [°] | TVD [ft] | Vert Sect [ft] | North [ft] | East [ft] | Grid East [US ft] | Grid North [US ft] | Latitude | Longitude | DLS [°/100ft] | Comments |
|------------|--------------------|----------------|-------------|-------------------|---------------|--------------|----------------------|-----------------------|------------|--------------|------------------|----------|
| 8520.50† | 90.000 | 180.123 | 7409.60 | 1911.01 | -1787.42 | -1183.79 | 3235271.57 | 1242993.11 | 39.9973433 | -104.6602252 | 0.00 | |
| 8620.50† | 90.000 | 180.123 | 7409.60 | 2010.38 | -1887.42 | -1184.01 | 3235272.31 | 1242893.12 | 39.9970688 | -104.6602259 | 0.00 | |
| 8720.50† | 90.000 | 180.123 | 7409.60 | 2109.75 | -1987.42 | -1184.22 | 3235273.05 | 1242793.12 | 39.9967943 | -104.6602267 | 0.00 | |
| 8820.50† | 90.000 | 180.123 | 7409.60 | 2209.11 | -2087.42 | -1184.44 | 3235273.79 | 1242693.13 | 39.9965198 | -104.6602274 | 0.00 | |
| 8920.50† | 90.000 | 180.123 | 7409.60 | 2308.48 | -2187.42 | -1184.65 | 3235274.52 | 1242593.13 | 39.9962453 | -104.6602282 | 0.00 | |
| 9020.50† | 90.000 | 180.123 | 7409.60 | 2407.85 | -2287.42 | -1184.86 | 3235275.26 | 1242493.14 | 39.9959707 | -104.6602289 | 0.00 | |
| 9120.50† | 90.000 | 180.123 | 7409.60 | 2507.22 | -2387.42 | -1185.08 | 3235276.00 | 1242393.15 | 39.9956962 | -104.6602297 | 0.00 | |
| 9220.50† | 90.000 | 180.123 | 7409.60 | 2606.59 | -2487.42 | -1185.29 | 3235276.74 | 1242293.15 | 39.9954217 | -104.6602304 | 0.00 | |
| 9320.50† | 90.000 | 180.123 | 7409.60 | 2705.96 | -2587.42 | -1185.51 | 3235277.47 | 1242193.16 | 39.9951472 | -104.6602312 | 0.00 | |
| 9420.50† | 90.000 | 180.123 | 7409.60 | 2805.33 | -2687.42 | -1185.72 | 3235278.21 | 1242093.17 | 39.9948727 | -104.6602319 | 0.00 | |
| 9520.50† | 90.000 | 180.123 | 7409.60 | 2904.70 | -2787.42 | -1185.94 | 3235278.95 | 1241993.17 | 39.9945982 | -104.6602327 | 0.00 | |
| 9620.50† | 90.000 | 180.123 | 7409.60 | 3004.07 | -2887.42 | -1186.15 | 3235279.69 | 1241893.18 | 39.9943237 | -104.6602334 | 0.00 | |
| 9720.50† | 90.000 | 180.123 | 7409.60 | 3103.44 | -2987.42 | -1186.37 | 3235280.42 | 1241793.19 | 39.9940492 | -104.6602342 | 0.00 | |
| 9820.50† | 90.000 | 180.123 | 7409.60 | 3202.80 | -3087.42 | -1186.58 | 3235281.16 | 1241693.19 | 39.9937747 | -104.6602349 | 0.00 | |
| 9920.50† | 90.000 | 180.123 | 7409.60 | 3302.17 | -3187.42 | -1186.79 | 3235281.90 | 1241593.20 | 39.9935002 | -104.6602357 | 0.00 | |
| 10020.50† | 90.000 | 180.123 | 7409.60 | 3401.54 | -3287.42 | -1187.01 | 3235282.63 | 1241493.20 | 39.9932257 | -104.6602364 | 0.00 | |
| 10120.50† | 90.000 | 180.123 | 7409.60 | 3500.91 | -3387.42 | -1187.22 | 3235283.37 | 1241393.21 | 39.9929512 | -104.6602372 | 0.00 | |
| 10220.50† | 90.000 | 180.123 | 7409.60 | 3600.28 | -3487.42 | -1187.44 | 3235284.11 | 1241293.22 | 39.9926766 | -104.6602379 | 0.00 | |
| 10320.50† | 90.000 | 180.123 | 7409.60 | 3699.65 | -3587.42 | -1187.65 | 3235284.85 | 1241193.22 | 39.9924021 | -104.6602387 | 0.00 | |
| 10420.50† | 90.000 | 180.123 | 7409.60 | 3799.02 | -3687.42 | -1187.87 | 3235285.58 | 1241093.23 | 39.9921276 | -104.6602394 | 0.00 | |
| 10520.50† | 90.000 | 180.123 | 7409.60 | 3898.39 | -3787.42 | -1188.08 | 3235286.32 | 1240993.24 | 39.9918531 | -104.6602402 | 0.00 | |
| 10620.50† | 90.000 | 180.123 | 7409.60 | 3997.76 | -3887.42 | -1188.29 | 3235287.06 | 1240893.24 | 39.9915786 | -104.6602409 | 0.00 | |
| 10720.50† | 90.000 | 180.123 | 7409.60 | 4097.13 | -3987.42 | -1188.51 | 3235287.80 | 1240793.25 | 39.9913041 | -104.6602417 | 0.00 | |
| 10820.50† | 90.000 | 180.123 | 7409.60 | 4196.49 | -4087.42 | -1188.72 | 3235288.53 | 1240693.25 | 39.9910296 | -104.6602424 | 0.00 | |
| 10920.50† | 90.000 | 180.123 | 7409.60 | 4295.86 | -4187.42 | -1188.94 | 3235289.27 | 1240593.26 | 39.9907551 | -104.6602432 | 0.00 | |
| 11020.50† | 90.000 | 180.123 | 7409.60 | 4395.23 | -4287.42 | -1189.15 | 3235290.01 | 1240493.27 | 39.9904806 | -104.6602439 | 0.00 | |
| 11120.50† | 90.000 | 180.123 | 7409.60 | 4494.60 | -4387.42 | -1189.37 | 3235290.75 | 1240393.27 | 39.9902061 | -104.6602446 | 0.00 | |
| 11220.50† | 90.000 | 180.123 | 7409.60 | 4593.97 | -4487.42 | -1189.58 | 3235291.48 | 1240293.28 | 39.9899316 | -104.6602454 | 0.00 | |
| 11320.50† | 90.000 | 180.123 | 7409.60 | 4693.34 | -4587.42 | -1189.80 | 3235292.22 | 1240193.29 | 39.9896570 | -104.6602461 | 0.00 | |
| 11420.50† | 90.000 | 180.123 | 7409.60 | 4792.71 | -4687.42 | -1190.01 | 3235292.96 | 1240093.29 | 39.9893825 | -104.6602469 | 0.00 | |
| 11520.50† | 90.000 | 180.123 | 7409.60 | 4892.08 | -4787.42 | -1190.22 | 3235293.70 | 1239993.30 | 39.9891080 | -104.6602476 | 0.00 | |
| 11620.50† | 90.000 | 180.123 | 7409.60 | 4991.45 | -4887.42 | -1190.44 | 3235294.43 | 1239893.30 | 39.9888335 | -104.6602484 | 0.00 | |
| 11720.50† | 90.000 | 180.123 | 7409.60 | 5090.82 | -4987.42 | -1190.65 | 3235295.17 | 1239793.31 | 39.9885590 | -104.6602491 | 0.00 | |
| 11820.50† | 90.000 | 180.123 | 7409.60 | 5190.18 | -5087.42 | -1190.87 | 3235295.91 | 1239693.32 | 39.9882845 | -104.6602499 | 0.00 | |
| 11920.50† | 90.000 | 180.123 | 7409.60 | 5289.55 | -5187.42 | -1191.08 | 3235296.64 | 1239593.32 | 39.9880100 | -104.6602506 | 0.00 | |
| 12020.50† | 90.000 | 180.123 | 7409.60 | 5388.92 | -5287.42 | -1191.30 | 3235297.38 | 1239493.33 | 39.9877355 | -104.6602514 | 0.00 | |
| 12120.50† | 90.000 | 180.123 | 7409.60 | 5488.29 | -5387.42 | -1191.51 | 3235298.12 | 1239393.34 | 39.9874610 | -104.6602521 | 0.00 | |
| 12220.50† | 90.000 | 180.123 | 7409.60 | 5587.66 | -5487.41 | -1191.73 | 3235298.86 | 1239293.34 | 39.9871865 | -104.6602529 | 0.00 | |
| 12320.50† | 90.000 | 180.123 | 7409.60 | 5687.03 | -5587.41 | -1191.94 | 3235299.59 | 1239193.35 | 39.9869120 | -104.6602536 | 0.00 | |
| 12420.50† | 90.000 | 180.123 | 7409.60 | 5786.40 | -5687.41 | -1192.15 | 3235300.33 | 1239093.36 | 39.9866375 | -104.6602544 | 0.00 | |
| 12520.50† | 90.000 | 180.123 | 7409.60 | 5885.77 | -5787.41 | -1192.37 | 3235301.07 | 1238993.36 | 39.9863629 | -104.6602551 | 0.00 | |
| 12620.50† | 90.000 | 180.123 | 7409.60 | 5985.14 | -5887.41 | -1192.58 | 3235301.81 | 1238893.37 | 39.9860884 | -104.6602559 | 0.00 | |
| 12720.50† | 90.000 | 180.123 | 7409.60 | 6084.51 | -5987.41 | -1192.80 | 3235302.54 | 1238793.37 | 39.9858139 | -104.6602566 | 0.00 | |
| 12820.50† | 90.000 | 180.123 | 7409.60 | 6183.87 | -6087.41 | -1193.01 | 3235303.28 | 1238693.38 | 39.9855394 | -104.6602574 | 0.00 | |
| 12920.50† | 90.000 | 180.123 | 7409.60 | 6283.24 | -6187.41 | -1193.23 | 3235304.02 | 1238593.39 | 39.9852649 | -104.6602581 | 0.00 | |

Planned Wellpath Report

Desha 4-1-3L PWP Rev-A.0

Page 5 of 7

REFERENCE WELLPATH IDENTIFICATION

| | | | |
|----------|---|-----------|------------------|
| Operator | CONFLUENCE RESOURCES | Well | Desha 4-1-3L |
| Field | WELD COUNTY (NAD83, TRUE NORTH) | API/Legal | |
| Facility | SEC.34-T01N-R65W | Wellbore | Desha 4-1-3L PWB |
| Slot | SLOT#20 Desha 4-1-3L (620'FSL & 993'FWL,SEC.34) | | |

WELLPATH DATA (178 stations) † = interpolated, ‡ = extrapolated station

| MD [ft] | Inclination [°] | Azimuth [°] | TVD [ft] | Vert Sect [ft] | North [ft] | East [ft] | Grid East [US ft] | Grid North [US ft] | Latitude | Longitude | DLS [°/100ft] | Comments |
|------------|--------------------|----------------|----------------------|-------------------|---------------|--------------|----------------------|-----------------------|------------|--------------|------------------|----------|
| 13020.50† | 90.000 | 180.123 | 7409.60 | 6382.61 | -6287.41 | -1193.44 | 3235304.76 | 1238493.39 | 39.9849904 | -104.6602589 | 0.00 | |
| 13120.50† | 90.000 | 180.123 | 7409.60 | 6481.98 | -6387.41 | -1193.65 | 3235305.49 | 1238393.40 | 39.9847159 | -104.6602596 | 0.00 | |
| 13220.50† | 90.000 | 180.123 | 7409.60 | 6581.35 | -6487.41 | -1193.87 | 3235306.23 | 1238293.41 | 39.9844414 | -104.6602604 | 0.00 | |
| 13320.50† | 90.000 | 180.123 | 7409.60 | 6680.72 | -6587.41 | -1194.08 | 3235306.97 | 1238193.41 | 39.9841669 | -104.6602611 | 0.00 | |
| 13420.50† | 90.000 | 180.123 | 7409.60 | 6780.09 | -6687.41 | -1194.30 | 3235307.71 | 1238093.42 | 39.9838924 | -104.6602619 | 0.00 | |
| 13520.50† | 90.000 | 180.123 | 7409.60 | 6879.46 | -6787.41 | -1194.51 | 3235308.44 | 1237993.42 | 39.9836179 | -104.6602626 | 0.00 | |
| 13620.50† | 90.000 | 180.123 | 7409.60 | 6978.83 | -6887.41 | -1194.73 | 3235309.18 | 1237893.43 | 39.9833434 | -104.6602633 | 0.00 | |
| 13720.50† | 90.000 | 180.123 | 7409.60 | 7078.20 | -6987.41 | -1194.94 | 3235309.92 | 1237793.44 | 39.9830688 | -104.6602641 | 0.00 | |
| 13820.50† | 90.000 | 180.123 | 7409.60 | 7177.56 | -7087.41 | -1195.16 | 3235310.65 | 1237693.44 | 39.9827943 | -104.6602648 | 0.00 | |
| 13920.50† | 90.000 | 180.123 | 7409.60 | 7276.93 | -7187.41 | -1195.37 | 3235311.39 | 1237593.45 | 39.9825198 | -104.6602656 | 0.00 | |
| 14020.50† | 90.000 | 180.123 | 7409.60 | 7376.30 | -7287.41 | -1195.58 | 3235312.13 | 1237493.46 | 39.9822453 | -104.6602663 | 0.00 | |
| 14120.50† | 90.000 | 180.123 | 7409.60 | 7475.67 | -7387.41 | -1195.80 | 3235312.87 | 1237393.46 | 39.9819708 | -104.6602671 | 0.00 | |
| 14220.50† | 90.000 | 180.123 | 7409.60 | 7575.04 | -7487.41 | -1196.01 | 3235313.60 | 1237293.47 | 39.9816963 | -104.6602678 | 0.00 | |
| 14320.50† | 90.000 | 180.123 | 7409.60 | 7674.41 | -7587.41 | -1196.23 | 3235314.34 | 1237193.47 | 39.9814218 | -104.6602686 | 0.00 | |
| 14420.50† | 90.000 | 180.123 | 7409.60 | 7773.78 | -7687.41 | -1196.44 | 3235315.08 | 1237093.48 | 39.9811473 | -104.6602693 | 0.00 | |
| 14520.50† | 90.000 | 180.123 | 7409.60 | 7873.15 | -7787.41 | -1196.66 | 3235315.82 | 1236993.49 | 39.9808728 | -104.6602701 | 0.00 | |
| 14620.50† | 90.000 | 180.123 | 7409.60 | 7972.52 | -7887.41 | -1196.87 | 3235316.55 | 1236893.49 | 39.9805983 | -104.6602708 | 0.00 | |
| 14720.50† | 90.000 | 180.123 | 7409.60 | 8071.89 | -7987.41 | -1197.09 | 3235317.29 | 1236793.50 | 39.9803238 | -104.6602716 | 0.00 | |
| 14820.50† | 90.000 | 180.123 | 7409.60 | 8171.26 | -8087.41 | -1197.30 | 3235318.03 | 1236693.51 | 39.9800492 | -104.6602723 | 0.00 | |
| 14920.50† | 90.000 | 180.123 | 7409.60 | 8270.62 | -8187.41 | -1197.51 | 3235318.77 | 1236593.51 | 39.9797747 | -104.6602731 | 0.00 | |
| 15020.50† | 90.000 | 180.123 | 7409.60 | 8369.99 | -8287.41 | -1197.73 | 3235319.50 | 1236493.52 | 39.9795002 | -104.6602738 | 0.00 | |
| 15120.50† | 90.000 | 180.123 | 7409.60 | 8469.36 | -8387.41 | -1197.94 | 3235320.24 | 1236393.53 | 39.9792257 | -104.6602746 | 0.00 | |
| 15220.50† | 90.000 | 180.123 | 7409.60 | 8568.73 | -8487.41 | -1198.16 | 3235320.98 | 1236293.53 | 39.9789512 | -104.6602753 | 0.00 | |
| 15320.50† | 90.000 | 180.123 | 7409.60 | 8668.10 | -8587.41 | -1198.37 | 3235321.72 | 1236193.54 | 39.9786767 | -104.6602761 | 0.00 | |
| 15420.50† | 90.000 | 180.123 | 7409.60 | 8767.47 | -8687.41 | -1198.59 | 3235322.45 | 1236093.54 | 39.9784022 | -104.6602768 | 0.00 | |
| 15520.50† | 90.000 | 180.123 | 7409.60 | 8866.84 | -8787.41 | -1198.80 | 3235323.19 | 1235993.55 | 39.9781277 | -104.6602776 | 0.00 | |
| 15620.50† | 90.000 | 180.123 | 7409.60 | 8966.21 | -8887.41 | -1199.01 | 3235323.93 | 1235893.56 | 39.9778532 | -104.6602783 | 0.00 | |
| 15720.50† | 90.000 | 180.123 | 7409.60 | 9065.58 | -8987.41 | -1199.23 | 3235324.66 | 1235793.56 | 39.9775787 | -104.6602791 | 0.00 | |
| 15820.50† | 90.000 | 180.123 | 7409.60 | 9164.95 | -9087.41 | -1199.44 | 3235325.40 | 1235693.57 | 39.9773042 | -104.6602798 | 0.00 | |
| 15920.50† | 90.000 | 180.123 | 7409.60 | 9264.31 | -9187.41 | -1199.66 | 3235326.14 | 1235593.58 | 39.9770296 | -104.6602805 | 0.00 | |
| 16020.50† | 90.000 | 180.123 | 7409.60 | 9363.68 | -9287.41 | -1199.87 | 3235326.88 | 1235493.58 | 39.9767551 | -104.6602813 | 0.00 | |
| 16120.50† | 90.000 | 180.123 | 7409.60 | 9463.05 | -9387.41 | -1200.09 | 3235327.61 | 1235393.59 | 39.9764806 | -104.6602820 | 0.00 | |
| 16220.50† | 90.000 | 180.123 | 7409.60 | 9562.42 | -9487.41 | -1200.30 | 3235328.35 | 1235293.59 | 39.9762061 | -104.6602828 | 0.00 | |
| 16320.50† | 90.000 | 180.123 | 7409.60 | 9661.79 | -9587.41 | -1200.52 | 3235329.09 | 1235193.60 | 39.9759316 | -104.6602835 | 0.00 | |
| 16420.50† | 90.000 | 180.123 | 7409.60 | 9761.16 | -9687.41 | -1200.73 | 3235329.83 | 1235093.61 | 39.9756571 | -104.6602843 | 0.00 | |
| 16520.50† | 90.000 | 180.123 | 7409.60 | 9860.53 | -9787.40 | -1200.94 | 3235330.56 | 1234993.61 | 39.9753826 | -104.6602850 | 0.00 | |
| 16620.50† | 90.000 | 180.123 | 7409.60 | 9959.90 | -9887.40 | -1201.16 | 3235331.30 | 1234893.62 | 39.9751081 | -104.6602858 | 0.00 | |
| 16720.50† | 90.000 | 180.123 | 7409.60 | 10059.27 | -9987.40 | -1201.37 | 3235332.04 | 1234793.63 | 39.9748336 | -104.6602865 | 0.00 | |
| 16820.50† | 90.000 | 180.123 | 7409.60 | 10158.64 | -10087.40 | -1201.59 | 3235332.78 | 1234693.63 | 39.9745591 | -104.6602873 | 0.00 | |
| 16920.50† | 90.000 | 180.123 | 7409.60 | 10258.00 | -10187.40 | -1201.80 | 3235333.51 | 1234593.64 | 39.9742846 | -104.6602880 | 0.00 | |
| 17020.50† | 90.000 | 180.123 | 7409.60 | 10357.37 | -10287.40 | -1202.02 | 3235334.25 | 1234493.64 | 39.9740100 | -104.6602888 | 0.00 | |
| 17120.50† | 90.000 | 180.123 | 7409.60 | 10456.74 | -10387.40 | -1202.23 | 3235334.99 | 1234393.65 | 39.9737355 | -104.6602895 | 0.00 | |
| 17184.45 | 90.000 | 180.123 | 7409.60 ² | 10520.29 | -10451.35 | -1202.37 | 3235335.46 | 1234329.71 | 39.9735600 | -104.6602900 | 0.00 | TD |

REFERENCE WELLPATH IDENTIFICATION

| | | | |
|----------|---|-----------|------------------|
| Operator | CONFLUENCE RESOURCES | Well | Desha 4-1-3L |
| Field | WELD COUNTY (NAD83, TRUE NORTH) | API/Legal | |
| Facility | SEC.34-T01N-R65W | Wellbore | Desha 4-1-3L PWB |
| Slot | SLOT#20 Desha 4-1-3L (620'FSL & 993'FWL,SEC.34) | | |

HOLE & CASING SECTIONS - Ref Wellbore: Desha 4-1-3L PWB Ref Wellpath: Desha 4-1-3L PWP Rev-A.0

| String/Diameter | Start MD [ft] | End MD [ft] | Interval [ft] | Start TVD [ft] | End TVD [ft] | Start N/S [ft] | Start E/W [ft] | End N/S [ft] | End E/W [ft] |
|------------------------|---------------|-------------|---------------|----------------|--------------|----------------|----------------|--------------|--------------|
| 9.625in Casing Surface | 20.50 | 1502.57 | 1482.07 | 20.50 | 1500.00 | 0.00 | 0.00 | -21.54 | -38.33 |

TARGETS

| Name | MD [ft] | TVD [ft] | North [ft] | East [ft] | Grid East [US ft] | Grid North [US ft] | Latitude | Longitude | Shape |
|--|----------|----------|------------|-----------|-------------------|--------------------|------------|--------------|---------|
| SEC.04-T01S-R65W | N/A | 61.00 | 62.61 | -5827.20 | 3230610.94 | 1244798.80 | 40.0024200 | -104.6768000 | polygon |
| 2D Polygon: dimensions not calculated | | | | | | | | | |
| SEC.04/09-T01S-R65W N/S 470' SETBACK | N/A | 61.00 | 62.61 | -5827.20 | 3230610.94 | 1244798.80 | 40.0024200 | -104.6768000 | polygon |
| 2D Polygon: dimensions not calculated | | | | | | | | | |
| SEC.09-T01S-R65W | N/A | 61.00 | 62.61 | -5827.20 | 3230610.94 | 1244798.80 | 40.0024200 | -104.6768000 | polygon |
| 2D Polygon: dimensions not calculated | | | | | | | | | |
| 2) Desha 4-1-3L BHL REV-1 (470'FSL & 212'FEL,SEC.09) | 17184.45 | 7409.60 | -10451.35 | -1202.37 | 3235335.46 | 1234329.71 | 39.9735600 | -104.6602900 | point |
| 1) Desha 4-1-3L LP REV-1 (470'FNL & 212'FEL,SEC.04) | 7825.91 | 7409.60 | -1092.83 | -1182.30 | 3235266.45 | 1243687.66 | 39.9992500 | -104.6602200 | point |

SURVEY PROGRAM - Ref Wellbore: Desha 4-1-3L PWB Ref Wellpath: Desha 4-1-3L PWP Rev-A.0

| Start MD [ft] | End MD [ft] | Positional Uncertainty Model | Log Name/Comment | Wellbore |
|---------------|-------------|--|------------------|------------------|
| 20.50 | 1502.57 | BH NaviTrak (2019) (Axial) | | Desha 4-1-3L PWB |
| 1502.57 | 17198.91 | BH AutoTrak Curve/eXpress (2019) (Short spacing) | | Desha 4-1-3L PWB |

Planned Wellpath Report

Desha 4-1-3L PWP Rev-A.0

Page 7 of 7

REFERENCE WELLPATH IDENTIFICATION

| | | | |
|----------|---|-----------|------------------|
| Operator | CONFLUENCE RESOURCES | Well | Desha 4-1-3L |
| Field | WELD COUNTY (NAD83, TRUE NORTH) | API/Legal | |
| Facility | SEC.34-T01N-R65W | Wellbore | Desha 4-1-3L PWB |
| Slot | SLOT#20 Desha 4-1-3L (620'FSL & 993'FWL,SEC.34) | | |

DESIGN COMMENTS

| MD [ft] | Inclination [°] | Azimuth [°] | TVD [ft] | Comment |
|------------|--------------------|----------------|-------------|----------------|
| 20.50 | 0.000 | 240.666 | 20.50 | Tie On |
| 1000.00 | 0.000 | 240.666 | 1000.00 | End of Tangent |
| 1626.76 | 12.535 | 240.666 | 1621.77 | Build (XS) |
| 7126.97 | 12.535 | 240.666 | 6990.87 | KOP |
| 7825.91 | 90.000 | 180.123 | 7409.60 | LANDING |
| 17184.45 | 90.000 | 180.123 | 7409.60 | TD |