

CONFLUENCE RESOURCES

Location:	COLORADO	Slot:	SLOT#19 Desha 4-2-2L (620'FSL & 968'FWL, SEC.34)
Field:	WELD COUNTY (NAD83, TRUE NORTH)	Well:	Desha 4-2-2L
Facility:	SEC.34-T01N-R65W	Wellbore:	Desha 4-2-2L PWB
Plot reference wellpath is Desha 4-2-2L PWP RevA.0		Grid System: NAD83 / Lambert Colorado SP, Northern Zone (501), US feet	
True vertical depths are referenced to Rig (20.5) (RT)		North Reference: True north	
Reference wellpath measured depths are referenced to Rig (20.5) (RT)		Scale: True distance	
Rig (20.5) (RT) to Mean Sea Level: 5159.5 feet		Coordinates are in feet referenced to Slot	
Mean Sea Level to Mud line (At Slot: SLOT#19 Desha 4-2-2L (620'FSL & 968'FWL, SEC.34)): 0 feet		Depths are in feet	
Offset wellpath MDs are referenced to each path's default MD datum		Created by: painsetr on 2020-10-07, Database: WA_Denver	

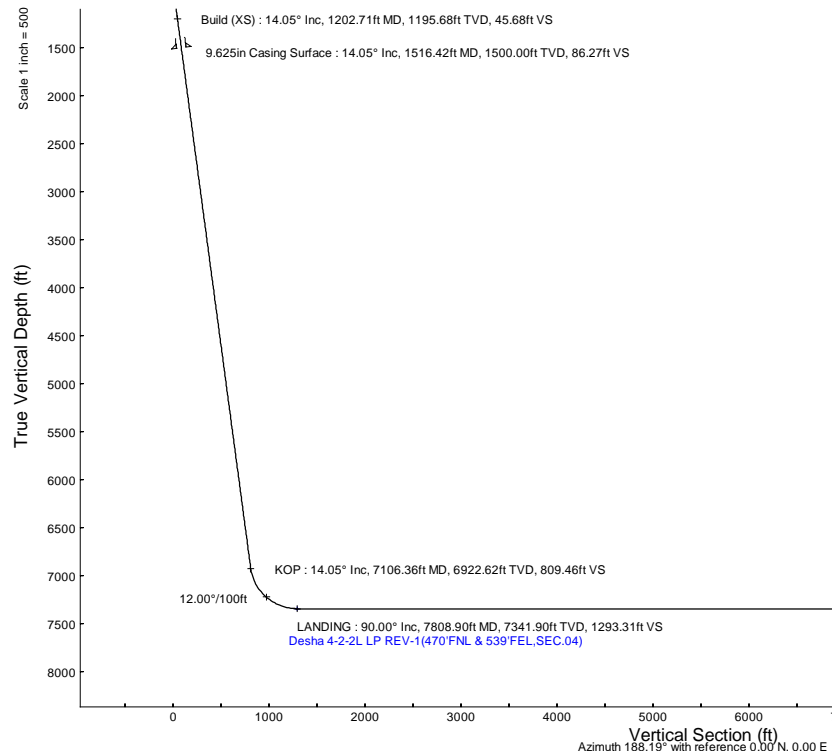
Location Information					
Facility Name		Grid East (US ft)	Grid North (US ft)	Latitude	Longitude
SEC.34-T01N-R65W		3236186.141	1244789.256	40°00'8.100"N	104°39'24.840"W
Slot		Grid East (US ft)	Grid North (US ft)	Latitude	Longitude
SLOT#19 Desha 4-2-2L (620'FSL & 968'FWL, SEC.34)		3236413.048	1244791.415	40°00'8.100"N	104°39'21.924"W
Rig (20.5) (RT) to Mud line (At Slot: SLOT#19 Desha 4-2-2L (620'FSL & 968'FWL, SEC.34))		0.00		5159.5R	
Mean Sea Level to Mud line (At Slot: SLOT#19 Desha 4-2-2L (620'FSL & 968'FWL, SEC.34))		0.00		5159.5R	
Rig (20.5) (RT) to Mean Sea Level		0.00		5159.5R	

Survey Program					
Start MD (ft)	End MD (ft)	Tool	Model	Log Name/Comment	Wellbore
20.50	1516.42	BH NavTrak (2019)	BH NavTrak (2019) (Axial)		Desha 4-2-2L PWB
1516.42	17205.12	BH AutoTrak Curve/xpress (2019)	BH AutoTrak Curve/xpress (2019) (Short spacing)		Desha 4-2-2L PWB

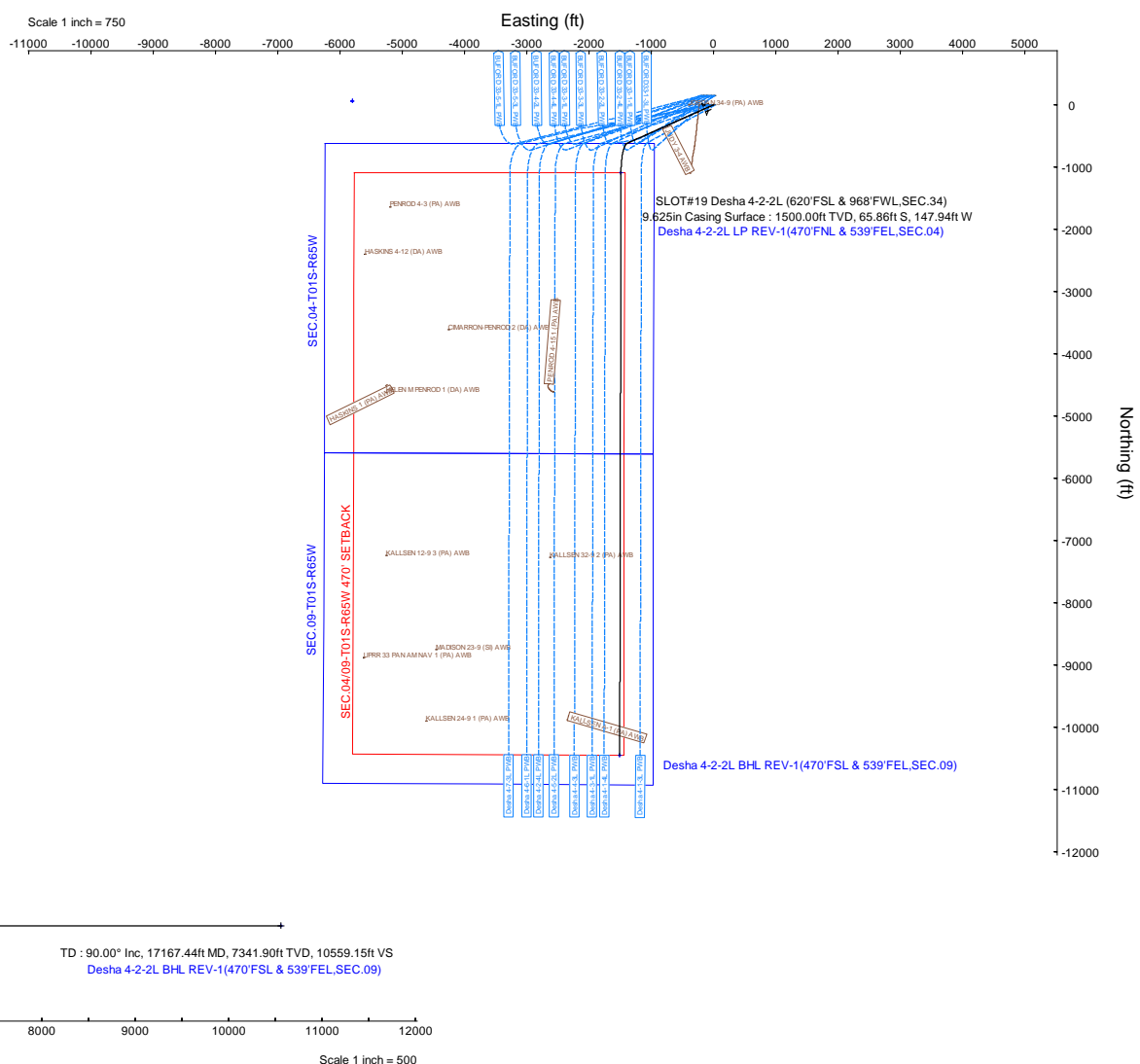
Hole and Casing Sections									
Name	Start MD (ft)	End MD (ft)	Interval (ft)	Start TVD (ft)	End TVD (ft)	Start Local N (ft)	Start Local E (ft)	End Local N (ft)	End Local E (ft)
9.625in Casing Surface	20.50	1516.42	1495.92	20.50	1500.00	0.00	0.00	-65.86	-147.94

Bottom Hole Location									
MD (ft)	Inc (°)	Az (°)	TVD (ft)	Local N (ft)	Local E (ft)	Grid East (US ft)	Grid North (US ft)	Latitude	Longitude
17167.44	90.000	180.124	7341.90	-10451.33	-1505.06	3235007.57	1234326.61	39°58'24.8160"N	104°39'41.2560"W

Targets									
Name	MD (ft)	TVD (ft)	Local N (ft)	Local E (ft)	Grid East (US ft)	Grid North (US ft)	Latitude	Longitude	
SEC.04-T01S-R65W	N/A	61.00	62.61	-5801.98	3230610.94	1244798.80	40°00'8.7120"N	104°40'36.4800"W	
SEC.0409-T01S-R65W 470' SETBACK	N/A	61.00	62.61	-5801.98	3230610.94	1244798.80	40°00'8.7120"N	104°40'36.4800"W	
SEC.09-T01S-R65W	N/A	61.00	62.61	-5801.98	3230610.94	1244798.80	40°00'8.7120"N	104°40'36.4800"W	
Desha 4-2-2L BHL REV-1(470'FSL & 539'FEL, SEC.09)	17167.44	7341.90	-10451.33	-1505.06	3235007.57	1234326.61	39°58'24.8160"N	104°39'41.2560"W	
Desha 4-2-2L LP REV-1(470'FNL & 539'FEL, SEC.04)	7808.90	7341.90	-1092.82	-1484.88	3234938.68	1243684.56	39°59'57.3000"N	104°39'41.0040"W	



Well Profile Data								
Design Comment	MD (ft)	Inc (°)	Az (°)	TVD (ft)	Local N (ft)	Local E (ft)	DLS (°/100ft)	VS (ft)
Tie On	20.50	0.000	246.003	20.50	0.00	0.00	0.00	0.00
End of Tangent	500.00	0.000	246.003	500.00	0.00	0.00	0.00	0.00
Build (XS)	1202.71	14.054	246.003	1195.68	-34.87	-78.34	2.00	45.68
KOP	7106.36	14.054	246.003	6922.62	-617.92	-1388.06	0.00	809.46
LANDING	7808.90	90.000	180.124	7341.90	-1092.82	-1484.88	12.00	1293.31
TD	17167.44	90.000	180.124	7341.90	-10451.33	-1505.06	0.00	10559.15





Planned Wellpath Report

Desha 4-2-2L PWP Rev-A.0

Page 1 of 7



REFERENCE WELLPATH IDENTIFICATION

Operator	CONFLUENCE RESOURCES	Well	Desha 4-2-2L
Field	WELD COUNTY (NAD83, TRUE NORTH)	API/Legal	
Facility	SEC.34-T01N-R65W	Wellbore	Desha 4-2-2L PWB
Slot	SLOT#19 Desha 4-2-2L (620'FSL & 968'FWL,SEC.34)		

REPORT SETUP INFORMATION

Projection System	NAD83 / Lambert Colorado SP, Northern Zone (501), US feet	Software System	WellArchitect® 6.0
North Reference	True	User	Painsetr
Scale	0.999966	Report Generated	10/7/2020 at 1:38:53 PM
Convergence at slot	0.55° East	Database	WA_Denver

WELLPATH LOCATION

	Local coordinates		Grid coordinates		Geographic coordinates	
	North[ft]	East[ft]	Easting[US ft]	Northing[US ft]	Latitude	Longitude
Slot Location	0.00	226.93	3236413.05	1244791.42	40.0022500°	-104.6560900°
Facility Reference Pt			3236186.14	1244789.26	40.0022500°	-104.6569000°
Field Reference Pt			3230456.90	1245096.09	40.0032400°	-104.6773400°

WELLPATH DATUM

Calculation method	Minimum curvature	Rig (20.5') (RT) to Facility Vertical Datum	5159.50ft
Horizontal Reference Pt	Slot	Rig (20.5') (RT) to Mean Sea Level	5159.50ft
Vertical Reference Pt	Rig (20.5') (RT)	Rig (20.5') (RT) to Mud Line at Slot (SLOT#19 Desha 4-2-2L (620'FSL & 968'FWL,SEC.34))	5159.50ft
MD Reference Pt	Rig (20.5') (RT)	Section Origin	N 0.00, E 0.00 ft
Field Vertical Reference	Mean Sea Level	Section Azimuth	188.19°

Planned Wellpath Report

Desha 4-2-2L PWP Rev-A.0

Page 2 of 7

REFERENCE WELLPATH IDENTIFICATION

Operator	CONFLUENCE RESOURCES	Well	Desha 4-2-2L
Field	WELD COUNTY (NAD83, TRUE NORTH)	API/Legal	
Facility	SEC.34-T01N-R65W	Wellbore	Desha 4-2-2L PWB
Slot	SLOT#19 Desha 4-2-2L (620'FSL & 968'FWL,SEC.34)		

WELLPATH DATA (178 stations) † = interpolated, ‡ = extrapolated station

MD [ft]	Inclination [°]	Azimuth [°]	TVD [ft]	Vert Sect [ft]	North [ft]	East [ft]	Grid East [US ft]	Grid North [US ft]	Latitude	Longitude	DLS [°/100ft]	Comments
0.00†	0.000	246.003	0.00	0.00	0.00	0.00	3236413.05	1244791.41	40.0022500	-104.6560900	0.00	
20.50	0.000	246.003	20.50	0.00	0.00	0.00	3236413.05	1244791.41	40.0022500	-104.6560900	0.00	Tie On
120.50†	0.000	246.003	120.50	0.00	0.00	0.00	3236413.05	1244791.41	40.0022500	-104.6560900	0.00	
220.50†	0.000	246.003	220.50	0.00	0.00	0.00	3236413.05	1244791.41	40.0022500	-104.6560900	0.00	
320.50†	0.000	246.003	320.50	0.00	0.00	0.00	3236413.05	1244791.41	40.0022500	-104.6560900	0.00	
420.50†	0.000	246.003	420.50	0.00	0.00	0.00	3236413.05	1244791.41	40.0022500	-104.6560900	0.00	
500.00	0.000	246.003	500.00	0.00	0.00	0.00	3236413.05	1244791.41	40.0022500	-104.6560900	0.00	End of Tangent
520.50†	0.410	246.003	520.50	0.04	-0.03	-0.07	3236412.98	1244791.38	40.0022499	-104.6560902	2.00	
620.50†	2.410	246.003	620.46	1.35	-1.03	-2.31	3236410.74	1244790.36	40.0022472	-104.6560983	2.00	
720.50†	4.410	246.003	720.28	4.52	-3.45	-7.75	3236405.33	1244787.89	40.0022405	-104.6561177	2.00	
820.50†	6.410	246.003	819.83	9.54	-7.28	-16.36	3236396.76	1244783.98	40.0022300	-104.6561484	2.00	
920.50†	8.410	246.003	918.99	16.41	-12.53	-28.14	3236385.03	1244778.62	40.0022156	-104.6561905	2.00	
1020.50†	10.410	246.003	1017.64	25.12	-19.18	-43.08	3236370.15	1244771.83	40.0021974	-104.6562438	2.00	
1120.50†	12.410	246.003	1115.66	35.66	-27.22	-61.15	3236352.16	1244763.61	40.0021753	-104.6563083	2.00	
1202.71	14.054	246.003	1195.68	45.68	-34.87	-78.34	3236335.04	1244755.80	40.0021543	-104.6563696	2.00	Build (XS)
1220.50†	14.054	246.003	1212.94	47.99	-36.63	-82.29	3236331.11	1244754.00	40.0021494	-104.6563837	0.00	
1320.50†	14.054	246.003	1309.95	60.92	-46.51	-104.47	3236309.03	1244743.92	40.0021223	-104.6564629	0.00	
1420.50†	14.054	246.003	1406.96	73.86	-56.38	-126.66	3236286.94	1244733.83	40.0020952	-104.6565421	0.00	
1520.50†	14.054	246.003	1503.96	86.80	-66.26	-148.84	3236264.85	1244723.74	40.0020681	-104.6566213	0.00	
1620.50†	14.054	246.003	1600.97	99.74	-76.14	-171.03	3236242.76	1244713.66	40.0020410	-104.6567005	0.00	
1720.50†	14.054	246.003	1697.98	112.67	-86.01	-193.21	3236220.67	1244703.57	40.0020139	-104.6567797	0.00	
1820.50†	14.054	246.003	1794.98	125.61	-95.89	-215.40	3236198.58	1244693.49	40.0019868	-104.6568589	0.00	
1920.50†	14.054	246.003	1891.99	138.55	-105.76	-237.58	3236176.49	1244683.40	40.0019597	-104.6569380	0.00	
2020.50†	14.054	246.003	1989.00	151.48	-115.64	-259.77	3236154.40	1244673.31	40.0019326	-104.6570172	0.00	
2120.50†	14.054	246.003	2086.00	164.42	-125.52	-281.95	3236132.31	1244663.23	40.0019054	-104.6570964	0.00	
2220.50†	14.054	246.003	2183.01	177.36	-135.39	-304.14	3236110.22	1244653.14	40.0018783	-104.6571756	0.00	
2320.50†	14.054	246.003	2280.02	190.30	-145.27	-326.32	3236088.13	1244643.05	40.0018512	-104.6572548	0.00	
2420.50†	14.054	246.003	2377.02	203.23	-155.14	-348.51	3236066.04	1244632.97	40.0018241	-104.6573340	0.00	
2520.50†	14.054	246.003	2474.03	216.17	-165.02	-370.69	3236043.96	1244622.88	40.0017970	-104.6574132	0.00	
2620.50†	14.054	246.003	2571.04	229.11	-174.89	-392.88	3236021.87	1244612.80	40.0017699	-104.6574924	0.00	
2720.50†	14.054	246.003	2668.04	242.05	-184.77	-415.06	3235999.78	1244602.71	40.0017428	-104.6575715	0.00	
2820.50†	14.054	246.003	2765.05	254.98	-194.65	-437.25	3235977.69	1244592.62	40.0017157	-104.6576507	0.00	
2920.50†	14.054	246.003	2862.06	267.92	-204.52	-459.43	3235955.60	1244582.54	40.0016886	-104.6577299	0.00	
3020.50†	14.054	246.003	2959.06	280.86	-214.40	-481.62	3235933.51	1244572.45	40.0016614	-104.6578091	0.00	
3120.50†	14.054	246.003	3056.07	293.79	-224.27	-503.80	3235911.42	1244562.36	40.0016343	-104.6578883	0.00	
3220.50†	14.054	246.003	3153.08	306.73	-234.15	-525.99	3235889.33	1244552.28	40.0016072	-104.6579675	0.00	
3320.50†	14.054	246.003	3250.08	319.67	-244.03	-548.17	3235867.24	1244542.19	40.0015801	-104.6580467	0.00	
3420.50†	14.054	246.003	3347.09	332.61	-253.90	-570.36	3235845.15	1244532.11	40.0015530	-104.6581258	0.00	
3520.50†	14.054	246.003	3444.10	345.54	-263.78	-592.54	3235823.06	1244522.02	40.0015259	-104.6582050	0.00	
3620.50†	14.054	246.003	3541.10	358.48	-273.65	-614.73	3235800.97	1244511.93	40.0014988	-104.6582842	0.00	
3720.50†	14.054	246.003	3638.11	371.42	-283.53	-636.91	3235778.89	1244501.85	40.0014717	-104.6583634	0.00	
3820.50†	14.054	246.003	3735.12	384.36	-293.41	-659.10	3235756.80	1244491.76	40.0014446	-104.6584426	0.00	
3920.50†	14.054	246.003	3832.12	397.29	-303.28	-681.28	3235734.71	1244481.67	40.0014174	-104.6585218	0.00	
4020.50†	14.054	246.003	3929.13	410.23	-313.16	-703.47	3235712.62	1244471.59	40.0013903	-104.6586010	0.00	
4120.50†	14.054	246.003	4026.14	423.17	-323.03	-725.65	3235690.53	1244461.50	40.0013632	-104.6586802	0.00	

Planned Wellpath Report

Desha 4-2-2L PWP Rev-A.0

Page 3 of 7

REFERENCE WELLPATH IDENTIFICATION

Operator	CONFLUENCE RESOURCES	Well	Desha 4-2-2L
Field	WELD COUNTY (NAD83, TRUE NORTH)	API/Legal	
Facility	SEC.34-T01N-R65W	Wellbore	Desha 4-2-2L PWB
Slot	SLOT#19 Desha 4-2-2L (620'FSL & 968'FWL,SEC.34)		

WELLPATH DATA (178 stations) † = interpolated, ‡ = extrapolated station

MD [ft]	Inclination [°]	Azimuth [°]	TVD [ft]	Vert Sect [ft]	North [ft]	East [ft]	Grid East [US ft]	Grid North [US ft]	Latitude	Longitude	DLS [°/100ft]	Comments
4220.50†	14.054	246.003	4123.14	436.10	-332.91	-747.84	3235668.44	1244451.41	40.0013361	-104.6587593	0.00	
4320.50†	14.054	246.003	4220.15	449.04	-342.79	-770.02	3235646.35	1244441.33	40.0013090	-104.6588385	0.00	
4420.50†	14.054	246.003	4317.16	461.98	-352.66	-792.21	3235624.26	1244431.24	40.0012819	-104.6589177	0.00	
4520.50†	14.054	246.003	4414.16	474.92	-362.54	-814.39	3235602.17	1244421.16	40.0012548	-104.6589969	0.00	
4620.50†	14.054	246.003	4511.17	487.85	-372.41	-836.58	3235580.08	1244411.07	40.0012277	-104.6590761	0.00	
4720.50†	14.054	246.003	4608.18	500.79	-382.29	-858.76	3235557.99	1244400.98	40.0012005	-104.6591553	0.00	
4820.50†	14.054	246.003	4705.18	513.73	-392.17	-880.95	3235535.90	1244390.90	40.0011734	-104.6592345	0.00	
4920.50†	14.054	246.003	4802.19	526.67	-402.04	-903.13	3235513.82	1244380.81	40.0011463	-104.6593136	0.00	
5020.50†	14.054	246.003	4899.20	539.60	-411.92	-925.32	3235491.73	1244370.72	40.0011192	-104.6593928	0.00	
5120.50†	14.054	246.003	4996.20	552.54	-421.79	-947.50	3235469.64	1244360.64	40.0010921	-104.6594720	0.00	
5220.50†	14.054	246.003	5093.21	565.48	-431.67	-969.69	3235447.55	1244350.55	40.0010650	-104.6595512	0.00	
5320.50†	14.054	246.003	5190.22	578.41	-441.55	-991.87	3235425.46	1244340.47	40.0010379	-104.6596304	0.00	
5420.50†	14.054	246.003	5287.22	591.35	-451.42	-1014.06	3235403.37	1244330.38	40.0010108	-104.6597096	0.00	
5520.50†	14.054	246.003	5384.23	604.29	-461.30	-1036.24	3235381.28	1244320.29	40.0009836	-104.6597888	0.00	
5620.50†	14.054	246.003	5481.24	617.23	-471.17	-1058.43	3235359.19	1244310.21	40.0009565	-104.6598679	0.00	
5720.50†	14.054	246.003	5578.24	630.16	-481.05	-1080.61	3235337.10	1244300.12	40.0009294	-104.6599471	0.00	
5820.50†	14.054	246.003	5675.25	643.10	-490.93	-1102.80	3235315.01	1244290.03	40.0009023	-104.6600263	0.00	
5920.50†	14.054	246.003	5772.26	656.04	-500.80	-1124.98	3235292.92	1244279.95	40.0008752	-104.6601055	0.00	
6020.50†	14.054	246.003	5869.26	668.98	-510.68	-1147.17	3235270.83	1244269.86	40.0008481	-104.6601847	0.00	
6120.50†	14.054	246.003	5966.27	681.91	-520.55	-1169.35	3235248.74	1244259.78	40.0008210	-104.6602639	0.00	
6220.50†	14.054	246.003	6063.28	694.85	-530.43	-1191.54	3235226.66	1244249.69	40.0007938	-104.6603431	0.00	
6320.50†	14.054	246.003	6160.28	707.79	-540.30	-1213.72	3235204.57	1244239.60	40.0007667	-104.6604222	0.00	
6420.50†	14.054	246.003	6257.29	720.72	-550.18	-1235.91	3235182.48	1244229.52	40.0007396	-104.6605014	0.00	
6520.50†	14.054	246.003	6354.30	733.66	-560.06	-1258.09	3235160.39	1244219.43	40.0007125	-104.6605806	0.00	
6620.50†	14.054	246.003	6451.30	746.60	-569.93	-1280.28	3235138.30	1244209.34	40.0006854	-104.6606598	0.00	
6720.50†	14.054	246.003	6548.31	759.54	-579.81	-1302.46	3235116.21	1244199.26	40.0006583	-104.6607390	0.00	
6820.50†	14.054	246.003	6645.32	772.47	-589.68	-1324.65	3235094.12	1244189.17	40.0006312	-104.6608182	0.00	
6920.50†	14.054	246.003	6742.32	785.41	-599.56	-1346.83	3235072.03	1244179.09	40.0006041	-104.6608973	0.00	
7020.50†	14.054	246.003	6839.33	798.35	-609.44	-1369.02	3235049.94	1244169.00	40.0005769	-104.6609765	0.00	
7106.36	14.054	246.003	6922.62	809.46	-617.92	-1388.06	3235030.98	1244160.34	40.0005537	-104.6610445	0.00	KOP
7120.50†	14.810	239.905	6936.31	811.49	-619.52	-1391.20	3235027.86	1244158.71	40.0005493	-104.6610557	12.00	
7220.50†	23.136	212.449	7030.98	837.42	-642.59	-1412.87	3235006.40	1244135.43	40.0004859	-104.6611331	12.00	
7320.50†	33.676	200.177	7118.89	882.61	-685.35	-1433.05	3234986.63	1244092.48	40.0003685	-104.6612051	12.00	
7420.50†	44.894	193.381	7196.20	945.11	-745.93	-1450.85	3234969.42	1244031.74	40.0002022	-104.6612686	12.00	
7520.50†	56.379	188.862	7259.54	1022.17	-821.68	-1465.48	3234955.50	1243955.86	39.9999943	-104.6613208	12.00	
7620.50†	67.990	185.423	7306.13	1110.43	-909.28	-1476.32	3234945.51	1243868.16	39.9997538	-104.6613595	12.00	
7720.50†	79.661	182.512	7333.94	1206.02	-1004.92	-1482.88	3234939.85	1243772.46	39.9994913	-104.6613829	12.00	
7808.90	90.000	180.124	7341.90†	1293.31	-1092.82	-1484.88	3234938.68	1243684.56	39.9992500	-104.6613900	12.00	LANDING
7820.50†	90.000	180.124	7341.90	1304.79	-1104.41	-1484.91	3234938.77	1243672.96	39.9992182	-104.6613901	0.00	
7920.50†	90.000	180.124	7341.90	1403.80	-1204.41	-1485.12	3234939.51	1243572.97	39.9989437	-104.6613908	0.00	
8020.50†	90.000	180.124	7341.90	1502.81	-1304.41	-1485.34	3234940.24	1243472.97	39.9986691	-104.6613916	0.00	
8120.50†	90.000	180.124	7341.90	1601.82	-1404.41	-1485.56	3234940.98	1243372.98	39.9983946	-104.6613923	0.00	
8220.50†	90.000	180.124	7341.90	1700.83	-1504.41	-1485.77	3234941.71	1243272.98	39.9981201	-104.6613931	0.00	
8320.50†	90.000	180.124	7341.90	1799.84	-1604.41	-1485.99	3234942.45	1243172.99	39.9978456	-104.6613938	0.00	
8420.50†	90.000	180.124	7341.90	1898.85	-1704.41	-1486.20	3234943.19	1243073.00	39.9975711	-104.6613946	0.00	

Planned Wellpath Report

Desha 4-2-2L PWP Rev-A.0

Page 4 of 7

REFERENCE WELLPATH IDENTIFICATION

Operator	CONFLUENCE RESOURCES	Well	Desha 4-2-2L
Field	WELD COUNTY (NAD83, TRUE NORTH)	API/Legal	
Facility	SEC.34-T01N-R65W	Wellbore	Desha 4-2-2L PWB
Slot	SLOT#19 Desha 4-2-2L (620'FSL & 968'FWL,SEC.34)		

WELLPATH DATA (178 stations) † = interpolated, ‡ = extrapolated station

MD [ft]	Inclination [°]	Azimuth [°]	TVD [ft]	Vert Sect [ft]	North [ft]	East [ft]	Grid East [US ft]	Grid North [US ft]	Latitude	Longitude	DLS [°/100ft]	Comments
8520.50†	90.000	180.124	7341.90	1997.86	-1804.41	-1486.42	3234943.92	1242973.00	39.9972966	-104.6613953	0.00	
8620.50†	90.000	180.124	7341.90	2096.87	-1904.41	-1486.63	3234944.66	1242873.01	39.9970221	-104.6613961	0.00	
8720.50†	90.000	180.124	7341.90	2195.88	-2004.41	-1486.85	3234945.39	1242773.02	39.9967476	-104.6613968	0.00	
8820.50†	90.000	180.124	7341.90	2294.89	-2104.41	-1487.06	3234946.13	1242673.02	39.9964731	-104.6613976	0.00	
8920.50†	90.000	180.124	7341.90	2393.89	-2204.41	-1487.28	3234946.87	1242573.03	39.9961986	-104.6613983	0.00	
9020.50†	90.000	180.124	7341.90	2492.90	-2304.41	-1487.50	3234947.60	1242473.04	39.9959241	-104.6613991	0.00	
9120.50†	90.000	180.124	7341.90	2591.91	-2404.41	-1487.71	3234948.34	1242373.04	39.9956496	-104.6613998	0.00	
9220.50†	90.000	180.124	7341.90	2690.92	-2504.41	-1487.93	3234949.07	1242273.05	39.9953750	-104.6614006	0.00	
9320.50†	90.000	180.124	7341.90	2789.93	-2604.41	-1488.14	3234949.81	1242173.05	39.9951005	-104.6614013	0.00	
9420.50†	90.000	180.124	7341.90	2888.94	-2704.41	-1488.36	3234950.55	1242073.06	39.9948260	-104.6614021	0.00	
9520.50†	90.000	180.124	7341.90	2987.95	-2804.41	-1488.57	3234951.28	1241973.07	39.9945515	-104.6614028	0.00	
9620.50†	90.000	180.124	7341.90	3086.96	-2904.41	-1488.79	3234952.02	1241873.07	39.9942770	-104.6614036	0.00	
9720.50†	90.000	180.124	7341.90	3185.97	-3004.41	-1489.01	3234952.75	1241773.08	39.9940025	-104.6614043	0.00	
9820.50†	90.000	180.124	7341.90	3284.98	-3104.41	-1489.22	3234953.49	1241673.09	39.9937280	-104.6614051	0.00	
9920.50†	90.000	180.124	7341.90	3383.99	-3204.41	-1489.44	3234954.23	1241573.09	39.9934535	-104.6614058	0.00	
10020.50†	90.000	180.124	7341.90	3483.00	-3304.41	-1489.65	3234954.96	1241473.10	39.9931790	-104.6614065	0.00	
10120.50†	90.000	180.124	7341.90	3582.01	-3404.41	-1489.87	3234955.70	1241373.10	39.9929045	-104.6614073	0.00	
10220.50†	90.000	180.124	7341.90	3681.02	-3504.41	-1490.08	3234956.43	1241273.11	39.9926300	-104.6614080	0.00	
10320.50†	90.000	180.124	7341.90	3780.03	-3604.41	-1490.30	3234957.17	1241173.12	39.9923555	-104.6614088	0.00	
10420.50†	90.000	180.124	7341.90	3879.04	-3704.41	-1490.51	3234957.91	1241073.12	39.9920809	-104.6614095	0.00	
10520.50†	90.000	180.124	7341.90	3978.05	-3804.41	-1490.73	3234958.64	1240973.13	39.9918064	-104.6614103	0.00	
10620.50†	90.000	180.124	7341.90	4077.06	-3904.41	-1490.95	3234959.38	1240873.14	39.9915319	-104.6614110	0.00	
10720.50†	90.000	180.124	7341.90	4176.06	-4004.41	-1491.16	3234960.11	1240773.14	39.9912574	-104.6614118	0.00	
10820.50†	90.000	180.124	7341.90	4275.07	-4104.41	-1491.38	3234960.85	1240673.15	39.9909829	-104.6614125	0.00	
10920.50†	90.000	180.124	7341.90	4374.08	-4204.41	-1491.59	3234961.59	1240573.15	39.9907084	-104.6614133	0.00	
11020.50†	90.000	180.124	7341.90	4473.09	-4304.41	-1491.81	3234962.32	1240473.16	39.9904339	-104.6614140	0.00	
11120.50†	90.000	180.124	7341.90	4572.10	-4404.41	-1492.02	3234963.06	1240373.17	39.9901594	-104.6614148	0.00	
11220.50†	90.000	180.124	7341.90	4671.11	-4504.41	-1492.24	3234963.79	1240273.17	39.9898849	-104.6614155	0.00	
11320.50†	90.000	180.124	7341.90	4770.12	-4604.41	-1492.46	3234964.53	1240173.18	39.9896104	-104.6614163	0.00	
11420.50†	90.000	180.124	7341.90	4869.13	-4704.41	-1492.67	3234965.27	1240073.19	39.9893359	-104.6614170	0.00	
11520.50†	90.000	180.124	7341.90	4968.14	-4804.40	-1492.89	3234966.00	1239973.19	39.9890614	-104.6614178	0.00	
11620.50†	90.000	180.124	7341.90	5067.15	-4904.40	-1493.10	3234966.74	1239873.20	39.9887868	-104.6614185	0.00	
11720.50†	90.000	180.124	7341.90	5166.16	-5004.40	-1493.32	3234967.48	1239773.20	39.9885123	-104.6614193	0.00	
11820.50†	90.000	180.124	7341.90	5265.17	-5104.40	-1493.53	3234968.21	1239673.21	39.9882378	-104.6614200	0.00	
11920.50†	90.000	180.124	7341.90	5364.18	-5204.40	-1493.75	3234968.95	1239573.22	39.9879633	-104.6614208	0.00	
12020.50†	90.000	180.124	7341.90	5463.19	-5304.40	-1493.96	3234969.68	1239473.22	39.9876888	-104.6614215	0.00	
12120.50†	90.000	180.124	7341.90	5562.20	-5404.40	-1494.18	3234970.42	1239373.23	39.9874143	-104.6614223	0.00	
12220.50†	90.000	180.124	7341.90	5661.21	-5504.40	-1494.40	3234971.16	1239273.24	39.9871398	-104.6614230	0.00	
12320.50†	90.000	180.124	7341.90	5760.22	-5604.40	-1494.61	3234971.89	1239173.24	39.9868653	-104.6614238	0.00	
12420.50†	90.000	180.124	7341.90	5859.23	-5704.40	-1494.83	3234972.63	1239073.25	39.9865908	-104.6614245	0.00	
12520.50†	90.000	180.124	7341.90	5958.24	-5804.40	-1495.04	3234973.36	1238973.26	39.9863163	-104.6614252	0.00	
12620.50†	90.000	180.124	7341.90	6057.24	-5904.40	-1495.26	3234974.10	1238873.26	39.9860418	-104.6614260	0.00	
12720.50†	90.000	180.124	7341.90	6156.25	-6004.40	-1495.47	3234974.84	1238773.27	39.9857672	-104.6614267	0.00	
12820.50†	90.000	180.124	7341.90	6255.26	-6104.40	-1495.69	3234975.57	1238673.27	39.9854927	-104.6614275	0.00	
12920.50†	90.000	180.124	7341.90	6354.27	-6204.40	-1495.90	3234976.31	1238573.28	39.9852182	-104.6614282	0.00	

Planned Wellpath Report

Desha 4-2-2L PWP Rev-A.0

Page 5 of 7

REFERENCE WELLPATH IDENTIFICATION

Operator	CONFLUENCE RESOURCES	Well	Desha 4-2-2L
Field	WELD COUNTY (NAD83, TRUE NORTH)	API/Legal	
Facility	SEC.34-T01N-R65W	Wellbore	Desha 4-2-2L PWB
Slot	SLOT#19 Desha 4-2-2L (620'FSL & 968'FWL,SEC.34)		

WELLPATH DATA (178 stations) † = interpolated, ‡ = extrapolated station

MD [ft]	Inclination [°]	Azimuth [°]	TVD [ft]	Vert Sect [ft]	North [ft]	East [ft]	Grid East [US ft]	Grid North [US ft]	Latitude	Longitude	DLS [°/100ft]	Comments
13020.50†	90.000	180.124	7341.90	6453.28	-6304.40	-1496.12	3234977.04	1238473.29	39.9849437	-104.6614290	0.00	
13120.50†	90.000	180.124	7341.90	6552.29	-6404.40	-1496.34	3234977.78	1238373.29	39.9846692	-104.6614297	0.00	
13220.50†	90.000	180.124	7341.90	6651.30	-6504.40	-1496.55	3234978.52	1238273.30	39.9843947	-104.6614305	0.00	
13320.50†	90.000	180.124	7341.90	6750.31	-6604.40	-1496.77	3234979.25	1238173.31	39.9841202	-104.6614312	0.00	
13420.50†	90.000	180.124	7341.90	6849.32	-6704.40	-1496.98	3234979.99	1238073.31	39.9838457	-104.6614320	0.00	
13520.50†	90.000	180.124	7341.90	6948.33	-6804.40	-1497.20	3234980.72	1237973.32	39.9835712	-104.6614327	0.00	
13620.50†	90.000	180.124	7341.90	7047.34	-6904.40	-1497.41	3234981.46	1237873.32	39.9832967	-104.6614335	0.00	
13720.50†	90.000	180.124	7341.90	7146.35	-7004.40	-1497.63	3234982.20	1237773.33	39.9830222	-104.6614342	0.00	
13820.50†	90.000	180.124	7341.90	7245.36	-7104.40	-1497.85	3234982.93	1237673.34	39.9827477	-104.6614350	0.00	
13920.50†	90.000	180.124	7341.90	7344.37	-7204.40	-1498.06	3234983.67	1237573.34	39.9824731	-104.6614357	0.00	
14020.50†	90.000	180.124	7341.90	7443.38	-7304.40	-1498.28	3234984.40	1237473.35	39.9821986	-104.6614365	0.00	
14120.50†	90.000	180.124	7341.90	7542.39	-7404.40	-1498.49	3234985.14	1237373.36	39.9819241	-104.6614372	0.00	
14220.50†	90.000	180.124	7341.90	7641.40	-7504.40	-1498.71	3234985.88	1237273.36	39.9816496	-104.6614380	0.00	
14320.50†	90.000	180.124	7341.90	7740.41	-7604.40	-1498.92	3234986.61	1237173.37	39.9813751	-104.6614387	0.00	
14420.50†	90.000	180.124	7341.90	7839.41	-7704.40	-1499.14	3234987.35	1237073.37	39.9811006	-104.6614395	0.00	
14520.50†	90.000	180.124	7341.90	7938.42	-7804.40	-1499.35	3234988.08	1236973.38	39.9808261	-104.6614402	0.00	
14620.50†	90.000	180.124	7341.90	8037.43	-7904.40	-1499.57	3234988.82	1236873.39	39.9805516	-104.6614410	0.00	
14720.50†	90.000	180.124	7341.90	8136.44	-8004.40	-1499.79	3234989.56	1236773.39	39.9802771	-104.6614417	0.00	
14820.50†	90.000	180.124	7341.90	8235.45	-8104.40	-1500.00	3234990.29	1236673.40	39.9800026	-104.6614425	0.00	
14920.50†	90.000	180.124	7341.90	8334.46	-8204.40	-1500.22	3234991.03	1236573.41	39.9797281	-104.6614432	0.00	
15020.50†	90.000	180.124	7341.90	8433.47	-8304.40	-1500.43	3234991.76	1236473.41	39.9794535	-104.6614439	0.00	
15120.50†	90.000	180.124	7341.90	8532.48	-8404.40	-1500.65	3234992.50	1236373.42	39.9791790	-104.6614447	0.00	
15220.50†	90.000	180.124	7341.90	8631.49	-8504.40	-1500.86	3234993.24	1236273.42	39.9789045	-104.6614454	0.00	
15320.50†	90.000	180.124	7341.90	8730.50	-8604.40	-1501.08	3234993.97	1236173.43	39.9786300	-104.6614462	0.00	
15420.50†	90.000	180.124	7341.90	8829.51	-8704.40	-1501.30	3234994.71	1236073.44	39.9783555	-104.6614469	0.00	
15520.50†	90.000	180.124	7341.90	8928.52	-8804.40	-1501.51	3234995.44	1235973.44	39.9780810	-104.6614477	0.00	
15620.50†	90.000	180.124	7341.90	9027.53	-8904.40	-1501.73	3234996.18	1235873.45	39.9778065	-104.6614484	0.00	
15720.50†	90.000	180.124	7341.90	9126.54	-9004.40	-1501.94	3234996.92	1235773.46	39.9775320	-104.6614492	0.00	
15820.50†	90.000	180.124	7341.90	9225.55	-9104.39	-1502.16	3234997.65	1235673.46	39.9772575	-104.6614499	0.00	
15920.50†	90.000	180.124	7341.90	9324.56	-9204.39	-1502.37	3234998.39	1235573.47	39.9769830	-104.6614507	0.00	
16020.50†	90.000	180.124	7341.90	9423.57	-9304.39	-1502.59	3234999.12	1235473.48	39.9767085	-104.6614514	0.00	
16120.50†	90.000	180.124	7341.90	9522.58	-9404.39	-1502.80	3234999.86	1235373.48	39.9764339	-104.6614522	0.00	
16220.50†	90.000	180.124	7341.90	9621.59	-9504.39	-1503.02	3235000.60	1235273.49	39.9761594	-104.6614529	0.00	
16320.50†	90.000	180.124	7341.90	9720.59	-9604.39	-1503.24	3235001.33	1235173.49	39.9758849	-104.6614537	0.00	
16420.50†	90.000	180.124	7341.90	9819.60	-9704.39	-1503.45	3235002.07	1235073.50	39.9756104	-104.6614544	0.00	
16520.50†	90.000	180.124	7341.90	9918.61	-9804.39	-1503.67	3235002.81	1234973.51	39.9753359	-104.6614552	0.00	
16620.50†	90.000	180.124	7341.90	10017.62	-9904.39	-1503.88	3235003.54	1234873.51	39.9750614	-104.6614559	0.00	
16720.50†	90.000	180.124	7341.90	10116.63	-10004.39	-1504.10	3235004.28	1234773.52	39.9747869	-104.6614567	0.00	
16820.50†	90.000	180.124	7341.90	10215.64	-10104.39	-1504.31	3235005.01	1234673.53	39.9745124	-104.6614574	0.00	
16920.50†	90.000	180.124	7341.90	10314.65	-10204.39	-1504.53	3235005.75	1234573.53	39.9742379	-104.6614582	0.00	
17020.50†	90.000	180.124	7341.90	10413.66	-10304.39	-1504.75	3235006.49	1234473.54	39.9739634	-104.6614589	0.00	
17120.50†	90.000	180.124	7341.90	10512.67	-10404.39	-1504.96	3235007.22	1234373.54	39.9736889	-104.6614596	0.00	
17167.44	90.000	180.124	7341.90 [‡]	10559.15	-10451.33	-1505.06	3235007.57	1234326.61	39.9735600	-104.6614600	0.00	TD

REFERENCE WELLPATH IDENTIFICATION

Operator	CONFLUENCE RESOURCES	Well	Desha 4-2-2L
Field	WELD COUNTY (NAD83, TRUE NORTH)	API/Legal	
Facility	SEC.34-T01N-R65W	Wellbore	Desha 4-2-2L PWB
Slot	SLOT#19 Desha 4-2-2L (620'FSL & 968'FWL,SEC.34)		

HOLE & CASING SECTIONS - Ref Wellbore: Desha 4-2-2L PWB Ref Wellpath: Desha 4-2-2L PWP Rev-A.0

String/Diameter	Start MD [ft]	End MD [ft]	Interval [ft]	Start TVD [ft]	End TVD [ft]	Start N/S [ft]	Start E/W [ft]	End N/S [ft]	End E/W [ft]
9.625in Casing Surface	20.50	1516.42	1495.92	20.50	1500.00	0.00	0.00	-65.86	-147.94

TARGETS

Name	MD [ft]	TVD [ft]	North [ft]	East [ft]	Grid East [US ft]	Grid North [US ft]	Latitude	Longitude	Shape
SEC.04-T01S-R65W	N/A	61.00	62.61	-5801.98	3230610.94	1244798.80	40.0024200	-104.6768000	polygon
2D Polygon: dimensions not calculated									
SEC.04/09-T01S-R65W 470' SETBACK	N/A	61.00	62.61	-5801.98	3230610.94	1244798.80	40.0024200	-104.6768000	polygon
2D Polygon: dimensions not calculated									
SEC.09-T01S-R65W	N/A	61.00	62.61	-5801.98	3230610.94	1244798.80	40.0024200	-104.6768000	polygon
2D Polygon: dimensions not calculated									
2) Desha 4-2-2L BHL REV-1 (470'FSL & 539'FEL,SEC.09)	17167.44	7341.90	-10451.33	-1505.06	3235007.57	1234326.61	39.9735600	-104.6614600	point
1) Desha 4-2-2L LP REV-1 (470'FNL & 539'FEL,SEC.04)	7808.90	7341.90	-1092.82	-1484.88	3234938.68	1243684.56	39.9992500	-104.6613900	point

SURVEY PROGRAM - Ref Wellbore: Desha 4-2-2L PWB Ref Wellpath: Desha 4-2-2L PWP Rev-A.0

Start MD [ft]	End MD [ft]	Positional Uncertainty Model	Log Name/Comment	Wellbore
20.50	1516.42	BH NaviTrak (2019) (Axial)		Desha 4-2-2L PWB
1516.42	17205.12	BH AutoTrak Curve/eXpress (2019) (Short spacing)		Desha 4-2-2L PWB

Planned Wellpath Report

Desha 4-2-2L PWP Rev-A.0

Page 7 of 7

REFERENCE WELLPATH IDENTIFICATION

Operator	CONFLUENCE RESOURCES	Well	Desha 4-2-2L
Field	WELD COUNTY (NAD83, TRUE NORTH)	API/Legal	
Facility	SEC.34-T01N-R65W	Wellbore	Desha 4-2-2L PWB
Slot	SLOT#19 Desha 4-2-2L (620'FSL & 968'FWL,SEC.34)		

DESIGN COMMENTS

MD [ft]	Inclination [°]	Azimuth [°]	TVD [ft]	Comment
20.50	0.000	246.003	20.50	Tie On
500.00	0.000	246.003	500.00	End of Tangent
1202.71	14.054	246.003	1195.68	Build (XS)
7106.36	14.054	246.003	6922.62	KOP
7808.90	90.000	180.124	7341.90	LANDING
17167.44	90.000	180.124	7341.90	TD