

CONFLUENCE RESOURCES



Location:	COLORADO	Slot:	SLOT#17 Desha 4-3-1L (620FSL & 918FWL,SEC.34)
Field:	WELD COUNTY (NAD83, TRUE NORTH)	Well:	Desha 4-3-1L
Facility:	SEC.34-T01N-R65W	Wellbore:	Desha 4-3-1L PWB
Plot reference wellpath is Desha 4-3-1L PWP RevA.0		Grid System: NAD83 / Lambert Colorado SP, Northern Zone (501), US feet	
True vertical depths are referenced to Rig (20.5) (RT)		North Reference: True north	
Reference wellpath measured depths are referenced to Rig (20.5) (RT)		Scale: True distance	
Rig (20.5) (RT) to Mean Sea Level: 5160.5 feet		Coordinates are in feet referenced to Slot	
Mean Sea Level to Mud line (At Slot: SLOT#17 Desha 4-3-1L (620FSL & 918FWL,SEC.34)): 0 feet		Depths are in feet	
Offset wellpath MDs are referenced to each path's default MD datum		Created by: painsetr on 2020-10-07, Database: WA_Denver	

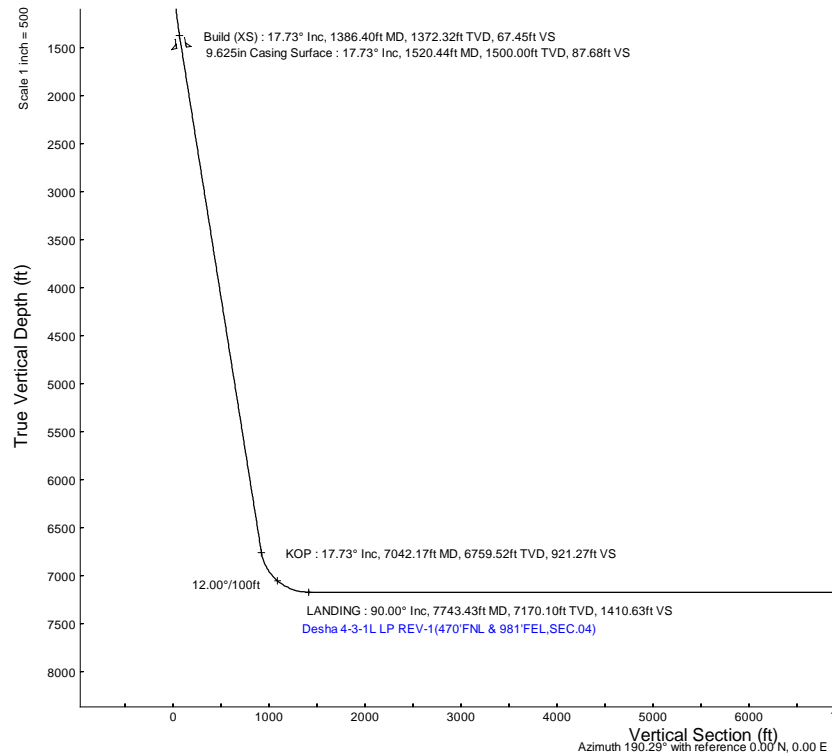
Location Information					
Facility Name		Grid East (US ft)	Grid North (US ft)	Latitude	Longitude
SEC.34-T01N-R65W		3236186.141	1244789.256	40°00'8.100"N	104°39'24.840"W
Slot		Grid East (US ft)	Grid North (US ft)	Latitude	Longitude
SLOT#17 Desha 4-3-1L (620FSL & 918FWL,SEC.34)		3236362.624	1244790.935	40°00'8.100"N	104°39'22.570"W
Rig (20.5) (RT) to Mud line (At Slot: SLOT#17 Desha 4-3-1L (620FSL & 918FWL,SEC.34))		5160.5R			
Mean Sea Level to Mud line (At Slot: SLOT#17 Desha 4-3-1L (620FSL & 918FWL,SEC.34))		0R			
Rig (20.5) (RT) to Mean Sea Level		5160.5R			

Survey Program					
Start MD (ft)	End MD (ft)	Tool	Model	Log Name/Comment	Wellbore
20.50	1520.44	BH NavTrak (2019)	BH NavTrak (2019) (Axial)		Desha 4-3-1L PWB
1520.44	17158.44	BH AutoTrak Curve/xpress (2019)	BH AutoTrak Curve/xpress (2019) (Short spacing)		Desha 4-3-1L PWB

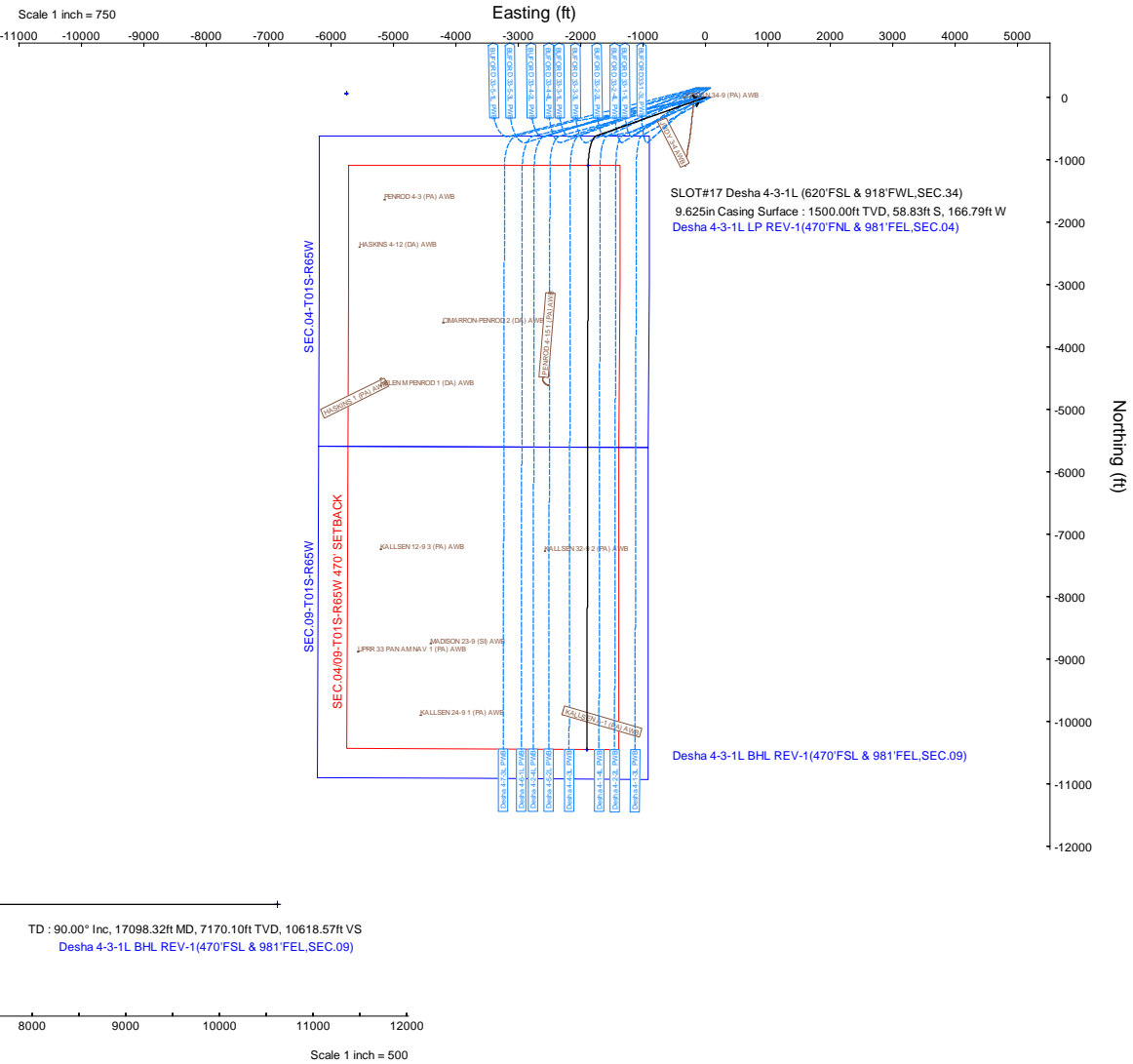
Hole and Casing Sections										
Name	Start MD (ft)	End MD (ft)	Interval (ft)	Start TVD (ft)	End TVD (ft)	Start Local N (ft)	Start Local E (ft)	End Local N (ft)	End Local E (ft)	Wellbore
9.625in Casing Surface	20.50	1520.44	1499.94	20.50	1500.00	0.00	0.00	-58.83	-166.79	Desha 4-3-1L PWB

Bottom Hole Location									
MD (ft)	Inc (°)	Az (°)	TVD (ft)	Local N (ft)	Local E (ft)	Grid East (US ft)	Grid North (US ft)	Latitude	Longitude
17098.32	90.000	180.124	7170.10	-10447.66	-1897.44	3234564.74	1234326.06	39°58'24.852"N	104°39'46.944"W

Targets									
Name	MD (ft)	TVD (ft)	Local N (ft)	Local E (ft)	Grid East (US ft)	Grid North (US ft)	Latitude	Longitude	
SEC.04-T01S-R65W	N/A	62.00	62.59	-5751.55	3230610.94	1244798.80	40°00'8.712"N	104°40'36.480"W	
SEC.0409-T01S-R65W 470' SETBACK	N/A	62.00	62.59	-5751.55	3230610.94	1244798.80	40°00'8.712"N	104°40'36.480"W	
SEC.09-T01S-R65W	N/A	62.00	62.59	-5751.55	3230610.94	1244798.80	40°00'8.712"N	104°40'36.480"W	
Desha 4-3-1L BHL REV-1(470FSL & 981FEL,SEC.09)	17098.32	7170.10	-10447.66	-1897.44	3234564.74	1234326.06	39°58'24.852"N	104°39'46.944"W	
Desha 4-3-1L LP REV-1(470FSL & 981FEL,SEC.04)	7743.43	7170.10	-1092.79	-1877.12	3234496.06	1243680.37	39°59'57.300"N	104°39'46.692"W	



Well Profile Data								
Design Comment	MD (ft)	Inc (°)	Az (°)	TVD (ft)	Local N (ft)	Local E (ft)	DLS (°/100ft)	VS (ft)
Tie On	20.50	0.000	250.572	20.50	0.00	0.00	0.00	0.00
End of Tangent	500.00	0.000	250.572	500.00	0.00	0.00	0.00	0.00
Build (XS)	1386.40	17.728	250.572	1372.32	-45.25	-128.29	2.00	67.45
KOP	7042.17	17.728	250.572	6759.52	-618.08	-1752.40	0.00	921.27
LANDING	7743.43	90.000	180.124	7170.10	-1092.79	-1877.12	12.00	1410.63
TD	17098.32	90.000	180.124	7170.10	-10447.66	-1897.44	0.00	10618.57



Planned Wellpath Report

Desha 4-3-1L PWP Rev-A.0

Page 1 of 7

REFERENCE WELLPATH IDENTIFICATION

Operator	CONFLUENCE RESOURCES	Well	Desha 4-3-1L
Field	WELD COUNTY (NAD83, TRUE NORTH)	API/Legal	
Facility	SEC.34-T01N-R65W	Wellbore	Desha 4-3-1L PWB
Slot	SLOT#17 Desha 4-3-1L (620'FSL & 918'FWL,SEC.34)		

REPORT SETUP INFORMATION

Projection System	NAD83 / Lambert Colorado SP, Northern Zone (501), US feet	Software System	WellArchitect® 6.0
North Reference	True	User	Painsetr
Scale	0.999966	Report Generated	10/7/2020 at 1:30:00 PM
Convergence at slot	0.55° East	Database	WA_Denver

WELLPATH LOCATION

	Local coordinates		Grid coordinates		Geographic coordinates	
	North[ft]	East[ft]	Easting[US ft]	Northing[US ft]	Latitude	Longitude
Slot Location	0.00	176.50	3236362.62	1244790.94	40.0022500°	-104.6562700°
Facility Reference Pt			3236186.14	1244789.26	40.0022500°	-104.6569000°
Field Reference Pt			3230456.90	1245096.09	40.0032400°	-104.6773400°

WELLPATH DATUM

Calculation method	Minimum curvature	Rig (20.5') (RT) to Facility Vertical Datum	5160.50ft
Horizontal Reference Pt	Slot	Rig (20.5') (RT) to Mean Sea Level	5160.50ft
Vertical Reference Pt	Rig (20.5') (RT)	Rig (20.5') (RT) to Mud Line at Slot (SLOT#17 Desha 4-3-1L (620'FSL & 918'FWL,SEC.34))	5160.50ft
MD Reference Pt	Rig (20.5') (RT)	Section Origin	N 0.00, E 0.00 ft
Field Vertical Reference	Mean Sea Level	Section Azimuth	190.29°

Planned Wellpath Report

Desha 4-3-1L PWP Rev-A.0

Page 2 of 7

REFERENCE WELLPATH IDENTIFICATION

Operator	CONFLUENCE RESOURCES	Well	Desha 4-3-1L
Field	WELD COUNTY (NAD83, TRUE NORTH)	API/Legal	
Facility	SEC.34-T01N-R65W	Wellbore	Desha 4-3-1L PWB
Slot	SLOT#17 Desha 4-3-1L (620'FSL & 918'FWL,SEC.34)		

WELLPATH DATA (177 stations) † = interpolated, ‡ = extrapolated station

MD [ft]	Inclination [°]	Azimuth [°]	TVD [ft]	Vert Sect [ft]	North [ft]	East [ft]	Grid East [US ft]	Grid North [US ft]	Latitude	Longitude	DLS [°/100ft]	Comments
0.00†	0.000	250.572	0.00	0.00	0.00	0.00	3236362.62	1244790.93	40.0022500	-104.6562700	0.00	
20.50	0.000	250.572	20.50	0.00	0.00	0.00	3236362.62	1244790.93	40.0022500	-104.6562700	0.00	Tie On
120.50†	0.000	250.572	120.50	0.00	0.00	0.00	3236362.62	1244790.93	40.0022500	-104.6562700	0.00	
220.50†	0.000	250.572	220.50	0.00	0.00	0.00	3236362.62	1244790.93	40.0022500	-104.6562700	0.00	
320.50†	0.000	250.572	320.50	0.00	0.00	0.00	3236362.62	1244790.93	40.0022500	-104.6562700	0.00	
420.50†	0.000	250.572	420.50	0.00	0.00	0.00	3236362.62	1244790.93	40.0022500	-104.6562700	0.00	
500.00	0.000	250.572	500.00	0.00	0.00	0.00	3236362.62	1244790.93	40.0022500	-104.6562700	0.00	End of Tangent
520.50†	0.410	250.572	520.50	0.04	-0.02	-0.07	3236362.55	1244790.91	40.0022499	-104.6562702	2.00	
620.50†	2.410	250.572	620.46	1.26	-0.84	-2.39	3236360.24	1244790.07	40.0022477	-104.6562785	2.00	
720.50†	4.410	250.572	720.28	4.21	-2.82	-8.00	3236354.65	1244788.04	40.0022423	-104.6562986	2.00	
820.50†	6.410	250.572	819.83	8.88	-5.96	-16.89	3236345.79	1244784.82	40.0022336	-104.6563303	2.00	
920.50†	8.410	250.572	918.99	15.27	-10.25	-29.05	3236333.67	1244780.41	40.0022219	-104.6563737	2.00	
1020.50†	10.410	250.572	1017.64	23.38	-15.68	-44.47	3236318.31	1244774.83	40.0022069	-104.6564287	2.00	
1120.50†	12.410	250.572	1115.66	33.19	-22.26	-63.13	3236299.72	1244768.07	40.0021889	-104.6564953	2.00	
1220.50†	14.410	250.572	1212.93	44.68	-29.98	-85.00	3236277.92	1244760.15	40.0021677	-104.6565734	2.00	
1320.50†	16.410	250.572	1309.33	57.86	-38.82	-110.05	3236252.95	1244751.07	40.0021434	-104.6566628	2.00	
1386.40	17.728	250.572	1372.32	67.45	-45.25	-128.29	3236234.77	1244744.47	40.0021258	-104.6567279	2.00	Build (XS)
1420.50†	17.728	250.572	1404.80	72.59	-48.70	-138.09	3236225.01	1244740.92	40.0021163	-104.6567629	0.00	
1520.50†	17.728	250.572	1500.06	87.69	-58.83	-166.80	3236196.39	1244730.52	40.0020885	-104.6568654	0.00	
1620.50†	17.728	250.572	1595.31	102.79	-68.96	-195.52	3236167.78	1244720.12	40.0020607	-104.6569679	0.00	
1720.50†	17.728	250.572	1690.56	117.88	-79.09	-224.23	3236139.16	1244709.72	40.0020329	-104.6570704	0.00	
1820.50†	17.728	250.572	1785.81	132.98	-89.22	-252.95	3236110.54	1244699.32	40.0020051	-104.6571729	0.00	
1920.50†	17.728	250.572	1881.06	148.08	-99.35	-281.67	3236081.93	1244688.92	40.0019773	-104.6572754	0.00	
2020.50†	17.728	250.572	1976.31	163.17	-109.47	-310.38	3236053.31	1244678.52	40.0019495	-104.6573779	0.00	
2120.50†	17.728	250.572	2071.56	178.27	-119.60	-339.10	3236024.69	1244668.12	40.0019217	-104.6574804	0.00	
2220.50†	17.728	250.572	2166.82	193.37	-129.73	-367.81	3235996.07	1244657.72	40.0018939	-104.6575829	0.00	
2320.50†	17.728	250.572	2262.07	208.46	-139.86	-396.53	3235967.46	1244647.32	40.0018661	-104.6576854	0.00	
2420.50†	17.728	250.572	2357.32	223.56	-149.99	-425.25	3235938.84	1244636.91	40.0018383	-104.6577879	0.00	
2520.50†	17.728	250.572	2452.57	238.66	-160.11	-453.96	3235910.22	1244626.51	40.0018105	-104.6578904	0.00	
2620.50†	17.728	250.572	2547.82	253.75	-170.24	-482.68	3235881.60	1244616.11	40.0017827	-104.6579929	0.00	
2720.50†	17.728	250.572	2643.07	268.85	-180.37	-511.39	3235852.99	1244605.71	40.0017549	-104.6580954	0.00	
2820.50†	17.728	250.572	2738.32	283.95	-190.50	-540.11	3235824.37	1244595.31	40.0017270	-104.6581979	0.00	
2920.50†	17.728	250.572	2833.57	299.04	-200.63	-568.83	3235795.75	1244584.91	40.0016992	-104.6583004	0.00	
3020.50†	17.728	250.572	2928.83	314.14	-210.76	-597.54	3235767.14	1244574.51	40.0016714	-104.6584029	0.00	
3120.50†	17.728	250.572	3024.08	329.24	-220.88	-626.26	3235738.52	1244564.11	40.0016436	-104.6585054	0.00	
3220.50†	17.728	250.572	3119.33	344.33	-231.01	-654.97	3235709.90	1244553.71	40.0016158	-104.6586079	0.00	
3320.50†	17.728	250.572	3214.58	359.43	-241.14	-683.69	3235681.28	1244543.31	40.0015880	-104.6587104	0.00	
3420.50†	17.728	250.572	3309.83	374.53	-251.27	-712.41	3235652.67	1244532.91	40.0015602	-104.6588129	0.00	
3520.50†	17.728	250.572	3405.08	389.62	-261.40	-741.12	3235624.05	1244522.51	40.0015324	-104.6589154	0.00	
3620.50†	17.728	250.572	3500.33	404.72	-271.53	-769.84	3235595.43	1244512.11	40.0015046	-104.6590179	0.00	
3720.50†	17.728	250.572	3595.59	419.81	-281.65	-798.55	3235566.82	1244501.71	40.0014768	-104.6591204	0.00	
3820.50†	17.728	250.572	3690.84	434.91	-291.78	-827.27	3235538.20	1244491.31	40.0014490	-104.6592229	0.00	
3920.50†	17.728	250.572	3786.09	450.01	-301.91	-855.98	3235509.58	1244480.90	40.0014212	-104.6593254	0.00	
4020.50†	17.728	250.572	3881.34	465.10	-312.04	-884.70	3235480.96	1244470.50	40.0013934	-104.6594279	0.00	
4120.50†	17.728	250.572	3976.59	480.20	-322.17	-913.42	3235452.35	1244460.10	40.0013656	-104.6595304	0.00	

Planned Wellpath Report

Desha 4-3-1L PWP Rev-A.0

Page 3 of 7

REFERENCE WELLPATH IDENTIFICATION			
Operator	CONFLUENCE RESOURCES	Well	Desha 4-3-1L
Field	WELD COUNTY (NAD83, TRUE NORTH)	API/Legal	
Facility	SEC.34-T01N-R65W	Wellbore	Desha 4-3-1L PWB
Slot	SLOT#17 Desha 4-3-1L (620'FSL & 918'FWL,SEC.34)		

WELLPATH DATA (177 stations) † = interpolated, ‡ = extrapolated station

MD [ft]	Inclination [°]	Azimuth [°]	TVD [ft]	Vert Sect [ft]	North [ft]	East [ft]	Grid East [US ft]	Grid North [US ft]	Latitude	Longitude	DLS [°/100ft]	Comments
4220.50†	17.728	250.572	4071.84	495.30	-332.30	-942.13	3235423.73	1244449.70	40.0013378	-104.6596329	0.00	
4320.50†	17.728	250.572	4167.09	510.39	-342.42	-970.85	3235395.11	1244439.30	40.0013100	-104.6597354	0.00	
4420.50†	17.728	250.572	4262.34	525.49	-352.55	-999.56	3235366.50	1244428.90	40.0012822	-104.6598379	0.00	
4520.50†	17.728	250.572	4357.60	540.59	-362.68	-1028.28	3235337.88	1244418.50	40.0012544	-104.6599404	0.00	
4620.50†	17.728	250.572	4452.85	555.68	-372.81	-1057.00	3235309.26	1244408.10	40.0012265	-104.6600428	0.00	
4720.50†	17.728	250.572	4548.10	570.78	-382.94	-1085.71	3235280.64	1244397.70	40.0011987	-104.6601453	0.00	
4820.50†	17.728	250.572	4643.35	585.88	-393.06	-1114.43	3235252.03	1244387.30	40.0011709	-104.6602478	0.00	
4920.50†	17.728	250.572	4738.60	600.97	-403.19	-1143.14	3235223.41	1244376.90	40.0011431	-104.6603503	0.00	
5020.50†	17.728	250.572	4833.85	616.07	-413.32	-1171.86	3235194.79	1244366.50	40.0011153	-104.6604528	0.00	
5120.50†	17.728	250.572	4929.10	631.17	-423.45	-1200.58	3235166.17	1244356.10	40.0010875	-104.6605553	0.00	
5220.50†	17.728	250.572	5024.36	646.26	-433.58	-1229.29	3235137.56	1244345.70	40.0010597	-104.6606578	0.00	
5320.50†	17.728	250.572	5119.61	661.36	-443.71	-1258.01	3235108.94	1244335.30	40.0010319	-104.6607603	0.00	
5420.50†	17.728	250.572	5214.86	676.46	-453.83	-1286.72	3235080.32	1244324.90	40.0010041	-104.6608628	0.00	
5520.50†	17.728	250.572	5310.11	691.55	-463.96	-1315.44	3235051.71	1244314.49	40.0009763	-104.6609653	0.00	
5620.50†	17.728	250.572	5405.36	706.65	-474.09	-1344.16	3235023.09	1244304.09	40.0009485	-104.6610678	0.00	
5720.50†	17.728	250.572	5500.61	721.75	-484.22	-1372.87	3234994.47	1244293.69	40.0009207	-104.6611703	0.00	
5820.50†	17.728	250.572	5595.86	736.84	-494.35	-1401.59	3234965.85	1244283.29	40.0008929	-104.6612728	0.00	
5920.50†	17.728	250.572	5691.11	751.94	-504.48	-1430.30	3234937.24	1244272.89	40.0008651	-104.6613753	0.00	
6020.50†	17.728	250.572	5786.37	767.03	-514.60	-1459.02	3234908.62	1244262.49	40.0008372	-104.6614778	0.00	
6120.50†	17.728	250.572	5881.62	782.13	-524.73	-1487.73	3234880.00	1244252.09	40.0008094	-104.6615803	0.00	
6220.50†	17.728	250.572	5976.87	797.23	-534.86	-1516.45	3234851.39	1244241.69	40.0007816	-104.6616828	0.00	
6320.50†	17.728	250.572	6072.12	812.32	-544.99	-1545.17	3234822.77	1244231.29	40.0007538	-104.6617853	0.00	
6420.50†	17.728	250.572	6167.37	827.42	-555.12	-1573.88	3234794.15	1244220.89	40.0007260	-104.6618878	0.00	
6520.50†	17.728	250.572	6262.62	842.52	-565.24	-1602.60	3234765.53	1244210.49	40.0006982	-104.6619903	0.00	
6620.50†	17.728	250.572	6357.87	857.61	-575.37	-1631.31	3234736.92	1244200.09	40.0006704	-104.6620928	0.00	
6720.50†	17.728	250.572	6453.13	872.71	-585.50	-1660.03	3234708.30	1244189.69	40.0006426	-104.6621953	0.00	
6820.50†	17.728	250.572	6548.38	887.81	-595.63	-1688.75	3234679.68	1244179.29	40.0006148	-104.6622978	0.00	
6920.50†	17.728	250.572	6643.63	902.90	-605.76	-1717.46	3234651.06	1244168.89	40.0005870	-104.6624003	0.00	
7020.50†	17.728	250.572	6738.88	918.00	-615.89	-1746.18	3234622.45	1244158.48	40.0005592	-104.6625028	0.00	
7042.17	17.728	250.572	6759.52	921.27	-618.08	-1752.40	3234616.25	1244156.23	40.0005531	-104.6625250	0.00	KOP
7120.50†	22.514	226.741	6833.17	939.29	-632.36	-1774.62	3234594.17	1244141.74	40.0005139	-104.6626043	12.00	
7220.50†	31.653	209.376	6922.25	979.63	-668.47	-1801.53	3234567.60	1244105.37	40.0004148	-104.6627003	12.00	
7320.50†	42.141	199.570	7002.18	1037.75	-723.15	-1825.73	3234543.92	1244050.47	40.0002647	-104.6627867	12.00	
7420.50†	53.178	193.159	7069.46	1111.10	-793.99	-1846.15	3234524.18	1243979.44	40.0000702	-104.6628596	12.00	
7520.50†	64.470	188.397	7121.17	1196.49	-877.91	-1861.91	3234509.22	1243895.38	39.9998399	-104.6629158	12.00	
7620.50†	75.889	184.468	7155.03	1290.16	-971.23	-1872.31	3234499.70	1243801.97	39.9995837	-104.6629529	12.00	
7720.50†	87.366	180.919	7169.57	1388.04	-1069.87	-1876.91	3234496.05	1243703.29	39.9993129	-104.6629693	12.00	
7743.43	90.000	180.124	7170.10†	1410.63	-1092.79	-1877.12	3234496.06	1243680.37	39.9992500	-104.6629700	12.00	LANDING
7820.50†	90.000	180.124	7170.10	1486.49	-1169.86	-1877.28	3234496.62	1243603.30	39.9990384	-104.6629706	0.00	
7920.50†	90.000	180.124	7170.10	1584.92	-1269.86	-1877.50	3234497.36	1243503.31	39.9987639	-104.6629713	0.00	
8020.50†	90.000	180.124	7170.10	1683.35	-1369.86	-1877.72	3234498.09	1243403.32	39.9984894	-104.6629721	0.00	
8120.50†	90.000	180.124	7170.10	1781.78	-1469.86	-1877.94	3234498.82	1243303.32	39.9982149	-104.6629728	0.00	
8220.50†	90.000	180.124	7170.10	1880.21	-1569.86	-1878.15	3234499.56	1243203.33	39.9979404	-104.6629736	0.00	
8320.50†	90.000	180.124	7170.10	1978.63	-1669.86	-1878.37	3234500.29	1243103.34	39.9976659	-104.6629743	0.00	
8420.50†	90.000	180.124	7170.10	2077.06	-1769.86	-1878.59	3234501.03	1243003.34	39.9973914	-104.6629751	0.00	

Planned Wellpath Report

Desha 4-3-1L PWP Rev-A.0

Page 4 of 7

REFERENCE WELLPATH IDENTIFICATION

Operator	CONFLUENCE RESOURCES	Well	Desha 4-3-1L
Field	WELD COUNTY (NAD83, TRUE NORTH)	API/Legal	
Facility	SEC.34-T01N-R65W	Wellbore	Desha 4-3-1L PWB
Slot	SLOT#17 Desha 4-3-1L (620'FSL & 918'FWL,SEC.34)		

WELLPATH DATA (177 stations) † = interpolated, ‡ = extrapolated station

MD [ft]	Inclination [°]	Azimuth [°]	TVD [ft]	Vert Sect [ft]	North [ft]	East [ft]	Grid East [US ft]	Grid North [US ft]	Latitude	Longitude	DLS [°/100ft]	Comments
8520.50†	90.000	180.124	7170.10	2175.49	-1869.86	-1878.81	3234501.76	1242903.35	39.9971169	-104.6629758	0.00	
8620.50†	90.000	180.124	7170.10	2273.92	-1969.86	-1879.02	3234502.50	1242803.35	39.9968424	-104.6629766	0.00	
8720.50†	90.000	180.124	7170.10	2372.35	-2069.86	-1879.24	3234503.23	1242703.36	39.9965678	-104.6629773	0.00	
8820.50†	90.000	180.124	7170.10	2470.78	-2169.86	-1879.46	3234503.96	1242603.37	39.9962933	-104.6629781	0.00	
8920.50†	90.000	180.124	7170.10	2569.21	-2269.86	-1879.67	3234504.70	1242503.37	39.9960188	-104.6629788	0.00	
9020.50†	90.000	180.124	7170.10	2667.64	-2369.86	-1879.89	3234505.43	1242403.38	39.9957443	-104.6629796	0.00	
9120.50†	90.000	180.124	7170.10	2766.07	-2469.86	-1880.11	3234506.17	1242303.39	39.9954698	-104.6629803	0.00	
9220.50†	90.000	180.124	7170.10	2864.50	-2569.86	-1880.33	3234506.90	1242203.39	39.9951953	-104.6629811	0.00	
9320.50†	90.000	180.124	7170.10	2962.93	-2669.86	-1880.54	3234507.63	1242103.40	39.9949208	-104.6629818	0.00	
9420.50†	90.000	180.124	7170.10	3061.36	-2769.86	-1880.76	3234508.37	1242003.40	39.9946463	-104.6629826	0.00	
9520.50†	90.000	180.124	7170.10	3159.78	-2869.86	-1880.98	3234509.10	1241903.41	39.9943718	-104.6629833	0.00	
9620.50†	90.000	180.124	7170.10	3258.21	-2969.86	-1881.20	3234509.84	1241803.42	39.9940973	-104.6629840	0.00	
9720.50†	90.000	180.124	7170.10	3356.64	-3069.86	-1881.41	3234510.57	1241703.42	39.9938228	-104.6629848	0.00	
9820.50†	90.000	180.124	7170.10	3455.07	-3169.86	-1881.63	3234511.31	1241603.43	39.9935483	-104.6629855	0.00	
9920.50†	90.000	180.124	7170.10	3553.50	-3269.86	-1881.85	3234512.04	1241503.44	39.9932737	-104.6629863	0.00	
10020.50†	90.000	180.124	7170.10	3651.93	-3369.86	-1882.06	3234512.77	1241403.44	39.9929992	-104.6629870	0.00	
10120.50†	90.000	180.124	7170.10	3750.36	-3469.86	-1882.28	3234513.51	1241303.45	39.9927247	-104.6629878	0.00	
10220.50†	90.000	180.124	7170.10	3848.79	-3569.86	-1882.50	3234514.24	1241203.45	39.9924502	-104.6629885	0.00	
10320.50†	90.000	180.124	7170.10	3947.22	-3669.86	-1882.72	3234514.98	1241103.46	39.9921757	-104.6629893	0.00	
10420.50†	90.000	180.124	7170.10	4045.65	-3769.86	-1882.93	3234515.71	1241003.47	39.9919012	-104.6629900	0.00	
10520.50†	90.000	180.124	7170.10	4144.08	-3869.86	-1883.15	3234516.45	1240903.47	39.9916267	-104.6629908	0.00	
10620.50†	90.000	180.124	7170.10	4242.50	-3969.86	-1883.37	3234517.18	1240803.48	39.9913522	-104.6629915	0.00	
10720.50†	90.000	180.124	7170.10	4340.93	-4069.86	-1883.59	3234517.91	1240703.49	39.9910777	-104.6629923	0.00	
10820.50†	90.000	180.124	7170.10	4439.36	-4169.86	-1883.80	3234518.65	1240603.49	39.9908032	-104.6629930	0.00	
10920.50†	90.000	180.124	7170.10	4537.79	-4269.86	-1884.02	3234519.38	1240503.50	39.9905287	-104.6629938	0.00	
11020.50†	90.000	180.124	7170.10	4636.22	-4369.86	-1884.24	3234520.12	1240403.51	39.9902542	-104.6629945	0.00	
11120.50†	90.000	180.124	7170.10	4734.65	-4469.86	-1884.45	3234520.85	1240303.51	39.9899796	-104.6629953	0.00	
11220.50†	90.000	180.124	7170.10	4833.08	-4569.86	-1884.67	3234521.58	1240203.52	39.9897051	-104.6629960	0.00	
11320.50†	90.000	180.124	7170.10	4931.51	-4669.86	-1884.89	3234522.32	1240103.52	39.9894306	-104.6629968	0.00	
11420.50†	90.000	180.124	7170.10	5029.94	-4769.86	-1885.11	3234523.05	1240003.53	39.9891561	-104.6629975	0.00	
11520.50†	90.000	180.124	7170.10	5128.37	-4869.86	-1885.32	3234523.79	1239903.54	39.9888816	-104.6629983	0.00	
11620.50†	90.000	180.124	7170.10	5226.80	-4969.86	-1885.54	3234524.52	1239803.54	39.9886071	-104.6629990	0.00	
11720.50†	90.000	180.124	7170.10	5325.22	-5069.85	-1885.76	3234525.26	1239703.55	39.9883326	-104.6629998	0.00	
11820.50†	90.000	180.124	7170.10	5423.65	-5169.85	-1885.98	3234525.99	1239603.56	39.9880581	-104.6630005	0.00	
11920.50†	90.000	180.124	7170.10	5522.08	-5269.85	-1886.19	3234526.72	1239503.56	39.9877836	-104.6630013	0.00	
12020.50†	90.000	180.124	7170.10	5620.51	-5369.85	-1886.41	3234527.46	1239403.57	39.9875091	-104.6630020	0.00	
12120.50†	90.000	180.124	7170.10	5718.94	-5469.85	-1886.63	3234528.19	1239303.57	39.9872346	-104.6630028	0.00	
12220.50†	90.000	180.124	7170.10	5817.37	-5569.85	-1886.84	3234528.93	1239203.58	39.9869601	-104.6630035	0.00	
12320.50†	90.000	180.124	7170.10	5915.80	-5669.85	-1887.06	3234529.66	1239103.59	39.9866855	-104.6630043	0.00	
12420.50†	90.000	180.124	7170.10	6014.23	-5769.85	-1887.28	3234530.39	1239003.59	39.9864110	-104.6630050	0.00	
12520.50†	90.000	180.124	7170.10	6112.66	-5869.85	-1887.50	3234531.13	1238903.60	39.9861365	-104.6630058	0.00	
12620.50†	90.000	180.124	7170.10	6211.09	-5969.85	-1887.71	3234531.86	1238803.61	39.9858620	-104.6630065	0.00	
12720.50†	90.000	180.124	7170.10	6309.52	-6069.85	-1887.93	3234532.60	1238703.61	39.9855875	-104.6630072	0.00	
12820.50†	90.000	180.124	7170.10	6407.95	-6169.85	-1888.15	3234533.33	1238603.62	39.9853130	-104.6630080	0.00	
12920.50†	90.000	180.124	7170.10	6506.37	-6269.85	-1888.37	3234534.07	1238503.62	39.9850385	-104.6630087	0.00	

Planned Wellpath Report

Desha 4-3-1L PWP Rev-A.0

Page 5 of 7

REFERENCE WELLPATH IDENTIFICATION

Operator	CONFLUENCE RESOURCES	Well	Desha 4-3-1L
Field	WELD COUNTY (NAD83, TRUE NORTH)	API/Legal	
Facility	SEC.34-T01N-R65W	Wellbore	Desha 4-3-1L PWB
Slot	SLOT#17 Desha 4-3-1L (620'FSL & 918'FWL,SEC.34)		

WELLPATH DATA (177 stations) † = interpolated, ‡ = extrapolated station

MD [ft]	Inclination [°]	Azimuth [°]	TVD [ft]	Vert Sect [ft]	North [ft]	East [ft]	Grid East [US ft]	Grid North [US ft]	Latitude	Longitude	DLS [°/100ft]	Comments
13020.50†	90.000	180.124	7170.10	6604.80	-6369.85	-1888.58	3234534.80	1238403.63	39.9847640	-104.6630095	0.00	
13120.50†	90.000	180.124	7170.10	6703.23	-6469.85	-1888.80	3234535.53	1238303.64	39.9844895	-104.6630102	0.00	
13220.50†	90.000	180.124	7170.10	6801.66	-6569.85	-1889.02	3234536.27	1238203.64	39.9842150	-104.6630110	0.00	
13320.50†	90.000	180.124	7170.10	6900.09	-6669.85	-1889.23	3234537.00	1238103.65	39.9839405	-104.6630117	0.00	
13420.50†	90.000	180.124	7170.10	6998.52	-6769.85	-1889.45	3234537.74	1238003.66	39.9836659	-104.6630125	0.00	
13520.50†	90.000	180.124	7170.10	7096.95	-6869.85	-1889.67	3234538.47	1237903.66	39.9833914	-104.6630132	0.00	
13620.50†	90.000	180.124	7170.10	7195.38	-6969.85	-1889.89	3234539.20	1237803.67	39.9831169	-104.6630140	0.00	
13720.50†	90.000	180.124	7170.10	7293.81	-7069.85	-1890.10	3234539.94	1237703.67	39.9828424	-104.6630147	0.00	
13820.50†	90.000	180.124	7170.10	7392.24	-7169.85	-1890.32	3234540.67	1237603.68	39.9825679	-104.6630155	0.00	
13920.50†	90.000	180.124	7170.10	7490.67	-7269.85	-1890.54	3234541.41	1237503.69	39.9822934	-104.6630162	0.00	
14020.50†	90.000	180.124	7170.10	7589.09	-7369.85	-1890.76	3234542.14	1237403.69	39.9820189	-104.6630170	0.00	
14120.50†	90.000	180.124	7170.10	7687.52	-7469.85	-1890.97	3234542.88	1237303.70	39.9817444	-104.6630177	0.00	
14220.50†	90.000	180.124	7170.10	7785.95	-7569.85	-1891.19	3234543.61	1237203.71	39.9814699	-104.6630185	0.00	
14320.50†	90.000	180.124	7170.10	7884.38	-7669.85	-1891.41	3234544.34	1237103.71	39.9811954	-104.6630192	0.00	
14420.50†	90.000	180.124	7170.10	7982.81	-7769.85	-1891.62	3234545.08	1237003.72	39.9809209	-104.6630200	0.00	
14520.50†	90.000	180.124	7170.10	8081.24	-7869.85	-1891.84	3234545.81	1236903.72	39.9806464	-104.6630207	0.00	
14620.50†	90.000	180.124	7170.10	8179.67	-7969.85	-1892.06	3234546.55	1236803.73	39.9803718	-104.6630215	0.00	
14720.50†	90.000	180.124	7170.10	8278.10	-8069.85	-1892.28	3234547.28	1236703.74	39.9800973	-104.6630222	0.00	
14820.50†	90.000	180.124	7170.10	8376.53	-8169.85	-1892.49	3234548.01	1236603.74	39.9798228	-104.6630230	0.00	
14920.50†	90.000	180.124	7170.10	8474.96	-8269.85	-1892.71	3234548.75	1236503.75	39.9795483	-104.6630237	0.00	
15020.50†	90.000	180.124	7170.10	8573.39	-8369.85	-1892.93	3234549.48	1236403.76	39.9792738	-104.6630245	0.00	
15120.50†	90.000	180.124	7170.10	8671.81	-8469.85	-1893.15	3234550.22	1236303.76	39.9789993	-104.6630252	0.00	
15220.50†	90.000	180.124	7170.10	8770.24	-8569.85	-1893.36	3234550.95	1236203.77	39.9787248	-104.6630260	0.00	
15320.50†	90.000	180.124	7170.10	8868.67	-8669.85	-1893.58	3234551.69	1236103.77	39.9784503	-104.6630267	0.00	
15420.50†	90.000	180.124	7170.10	8967.10	-8769.85	-1893.80	3234552.42	1236003.78	39.9781758	-104.6630274	0.00	
15520.50†	90.000	180.124	7170.10	9065.53	-8869.85	-1894.01	3234553.15	1235903.79	39.9779013	-104.6630282	0.00	
15620.50†	90.000	180.124	7170.10	9163.96	-8969.85	-1894.23	3234553.89	1235803.79	39.9776268	-104.6630289	0.00	
15720.50†	90.000	180.124	7170.10	9262.39	-9069.85	-1894.45	3234554.62	1235703.80	39.9773522	-104.6630297	0.00	
15820.50†	90.000	180.124	7170.10	9360.82	-9169.85	-1894.67	3234555.36	1235603.81	39.9770777	-104.6630304	0.00	
15920.50†	90.000	180.124	7170.10	9459.25	-9269.85	-1894.88	3234556.09	1235503.81	39.9768032	-104.6630312	0.00	
16020.50†	90.000	180.124	7170.10	9557.68	-9369.84	-1895.10	3234556.82	1235403.82	39.9765287	-104.6630319	0.00	
16120.50†	90.000	180.124	7170.10	9656.11	-9469.84	-1895.32	3234557.56	1235303.83	39.9762542	-104.6630327	0.00	
16220.50†	90.000	180.124	7170.10	9754.54	-9569.84	-1895.54	3234558.29	1235203.83	39.9759797	-104.6630334	0.00	
16320.50†	90.000	180.124	7170.10	9852.96	-9669.84	-1895.75	3234559.03	1235103.84	39.9757052	-104.6630342	0.00	
16420.50†	90.000	180.124	7170.10	9951.39	-9769.84	-1895.97	3234559.76	1235003.84	39.9754307	-104.6630349	0.00	
16520.50†	90.000	180.124	7170.10	10049.82	-9869.84	-1896.19	3234560.50	1234903.85	39.9751562	-104.6630357	0.00	
16620.50†	90.000	180.124	7170.10	10148.25	-9969.84	-1896.40	3234561.23	1234803.86	39.9748817	-104.6630364	0.00	
16720.50†	90.000	180.124	7170.10	10246.68	-10069.84	-1896.62	3234561.96	1234703.86	39.9746072	-104.6630372	0.00	
16820.50†	90.000	180.124	7170.10	10345.11	-10169.84	-1896.84	3234562.70	1234603.87	39.9743326	-104.6630379	0.00	
16920.50†	90.000	180.124	7170.10	10443.54	-10269.84	-1897.06	3234563.43	1234503.88	39.9740581	-104.6630387	0.00	
17020.50†	90.000	180.124	7170.10	10541.97	-10369.84	-1897.27	3234564.17	1234403.88	39.9737836	-104.6630394	0.00	
17098.32	90.000	180.124	7170.10 [‡]	10618.57	-10447.66	-1897.44	3234564.74	1234326.06	39.9735700	-104.6630400	0.00	TD

REFERENCE WELLPATH IDENTIFICATION

Operator	CONFLUENCE RESOURCES	Well	Desha 4-3-1L
Field	WELD COUNTY (NAD83, TRUE NORTH)	API/Legal	
Facility	SEC.34-T01N-R65W	Wellbore	Desha 4-3-1L PWB
Slot	SLOT#17 Desha 4-3-1L (620'FSL & 918'FWL,SEC.34)		

HOLE & CASING SECTIONS - Ref Wellbore: Desha 4-3-1L PWB Ref Wellpath: Desha 4-3-1L PWP Rev-A.0

String/Diameter	Start MD [ft]	End MD [ft]	Interval [ft]	Start TVD [ft]	End TVD [ft]	Start N/S [ft]	Start E/W [ft]	End N/S [ft]	End E/W [ft]
9.625in Casing Surface	20.50	1520.44	1499.94	20.50	1500.00	0.00	0.00	-58.83	-166.79

TARGETS

Name	MD [ft]	TVD [ft]	North [ft]	East [ft]	Grid East [US ft]	Grid North [US ft]	Latitude	Longitude	Shape
SEC.04-T01S-R65W	N/A	62.00	62.59	-5751.55	3230610.94	1244798.80	40.0024200	-104.6768000	polygon
2D Polygon: dimensions not calculated									
SEC.04/09-T01S-R65W 470' SETBACK	N/A	62.00	62.59	-5751.55	3230610.94	1244798.80	40.0024200	-104.6768000	polygon
2D Polygon: dimensions not calculated									
SEC.09-T01S-R65W	N/A	62.00	62.59	-5751.55	3230610.94	1244798.80	40.0024200	-104.6768000	polygon
2D Polygon: dimensions not calculated									
2) Desha 4-3-1L BHL REV-1 (470'FSL & 981'FEL,SEC.09)	17098.32	7170.10	-10447.66	-1897.44	3234564.74	1234326.06	39.9735700	-104.6630400	point
1) Desha 4-3-1L LP REV-1 (470'FNL & 981'FEL,SEC.04)	7743.43	7170.10	-1092.79	-1877.12	3234496.06	1243680.37	39.9992500	-104.6629700	point

SURVEY PROGRAM - Ref Wellbore: Desha 4-3-1L PWB Ref Wellpath: Desha 4-3-1L PWP Rev-A.0

Start MD [ft]	End MD [ft]	Positional Uncertainty Model	Log Name/Comment	Wellbore
20.50	1520.44	BH NaviTrak (2019) (Axial)		Desha 4-3-1L PWB
1520.44	17158.44	BH AutoTrak Curve/eXpress (2019) (Short spacing)		Desha 4-3-1L PWB

Planned Wellpath Report

Desha 4-3-1L PWP Rev-A.0

Page 7 of 7

REFERENCE WELLPATH IDENTIFICATION

Operator	CONFLUENCE RESOURCES	Well	Desha 4-3-1L
Field	WELD COUNTY (NAD83, TRUE NORTH)	API/Legal	
Facility	SEC.34-T01N-R65W	Wellbore	Desha 4-3-1L PWB
Slot	SLOT#17 Desha 4-3-1L (620'FSL & 918'FWL,SEC.34)		

DESIGN COMMENTS

MD [ft]	Inclination [°]	Azimuth [°]	TVD [ft]	Comment
20.50	0.000	250.572	20.50	Tie On
500.00	0.000	250.572	500.00	End of Tangent
1386.40	17.728	250.572	1372.32	Build (XS)
7042.17	17.728	250.572	6759.52	KOP
7743.43	90.000	180.124	7170.10	LANDING
17098.32	90.000	180.124	7170.10	TD