

CONFLUENCE RESOURCES



Location:	COLORADO	Slot:	SLOT#16 Desha 4-4-3L (620'FSL & 893'FWL,SEC.34)
Field:	WELD COUNTY (NAD83, TRUE NORTH)	Well:	Desha 4-4-3L
Facility:	SEC.34-T01N-R65W	Wellbore:	Desha 4-4-3L PWB
Plot reference wellpath is Desha 4-4-3L PWP RevA.0		Grid System: NAD83 / Lambert Colorado SP, Northern Zone (501), US feet	
True vertical depths are referenced to Rig (20.5) (RT)		North Reference: True north	
Reference wellpath measured depths are referenced to Rig (20.5) (RT)		Scale: True distance	
Rig (20.5) to Mean Sea Level: 5160.5 feet		Coordinates are in feet referenced to Slot	
Mean Sea Level to Mud line (At Slot: SLOT#16 Desha 4-4-3L (620'FSL & 893'FWL,SEC.34)): 0 feet		Depths are in feet	
Offset wellpath MDs are referenced to each path's default MD datum		Created by: painstr on 2020-10-07, Database: WA_Denver	

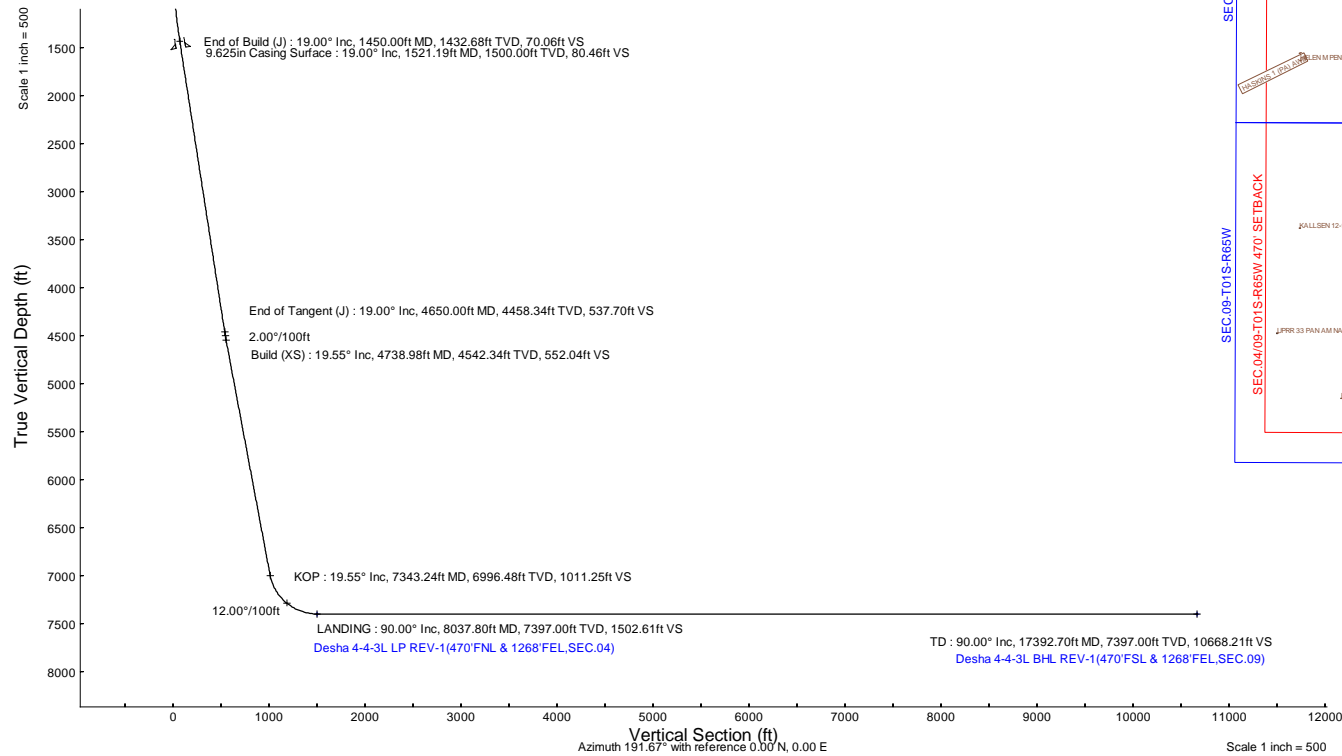
Location Information					
Facility Name		Grid East (US ft)	Grid North (US ft)	Latitude	Longitude
SEC.34-T01N-R65W		3236186.141	1244789.256	40°00'8.100"N	104°39'24.840"W
Slot		Grid East (US ft)	Grid North (US ft)	Latitude	Longitude
SLOT#16 Desha 4-4-3L (620'FSL & 893'FWL,SEC.34)		3236337.412	1244790.695	40°00'8.100"N	104°39'22.860"W
Rig (20.5) (RT) to Mud line (At Slot: SLOT#16 Desha 4-4-3L (620'FSL & 893'FWL,SEC.34))		5160.5R			
Mean Sea Level to Mud line (At Slot: SLOT#16 Desha 4-4-3L (620'FSL & 893'FWL,SEC.34))		0R			
Rig (20.5) (RT) to Mean Sea Level		5160.5R			

Survey Program					
Start MD (ft)	End MD (ft)	Tool	Model	Log Name/Comment	Wellbore
20.50	1521.19	BH NavTrak (2019)	BH NavTrak (2019) (Axial)		Desha 4-4-3L PWB
1521.19	17461.99	BH AutoTrak Curve/xpress (2019)	BH AutoTrak Curve/xpress (2019) (Short spacing)		Desha 4-4-3L PWB

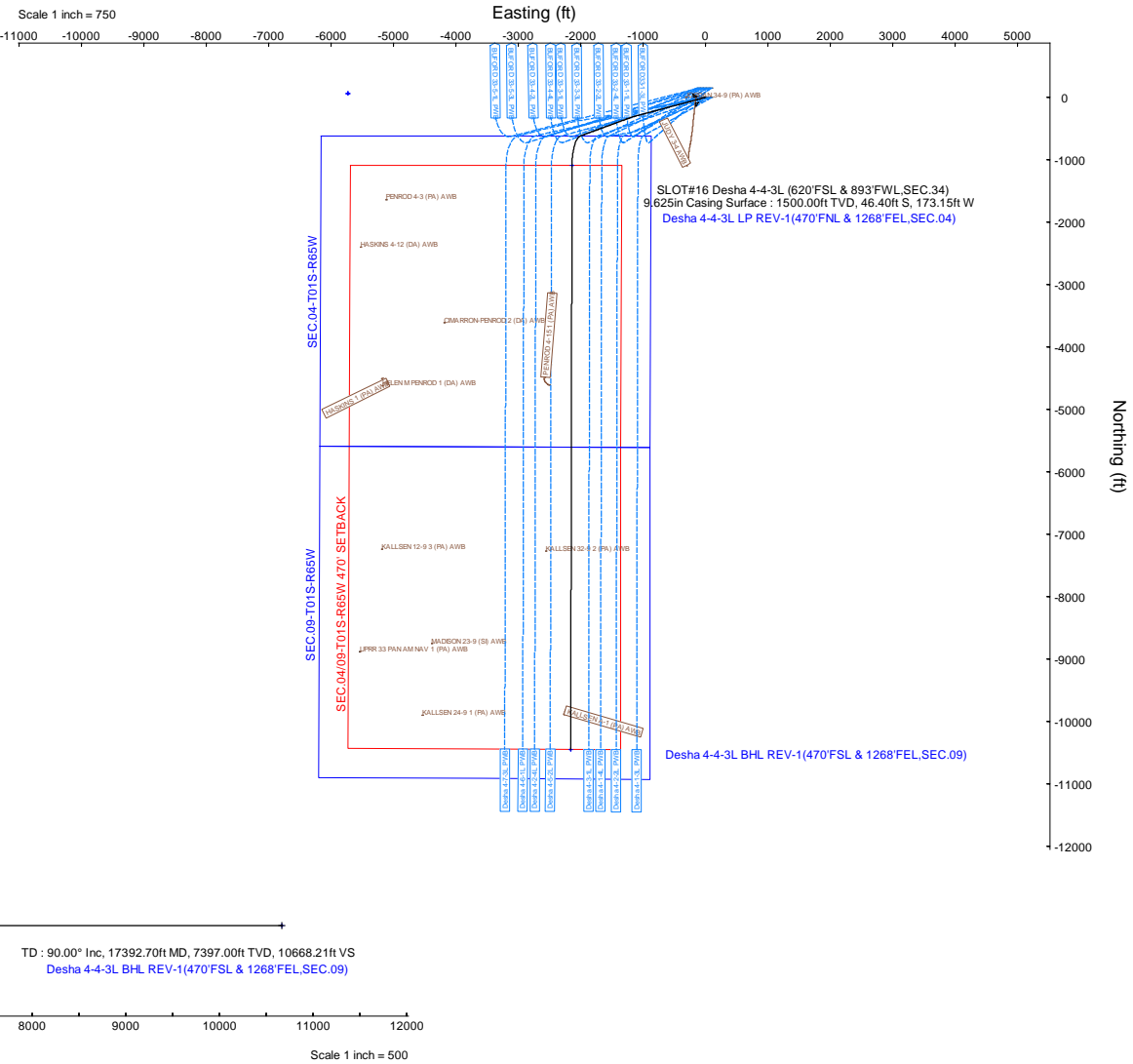
Hole and Casing Sections									
Name	Start MD (ft)	End MD (ft)	Interval (ft)	Start TVD (ft)	End TVD (ft)	Start Local N (ft)	Start Local E (ft)	End Local N (ft)	End Local E (ft)
9.625in Casing Surface	20.50	1521.19	1500.69	20.50	1500.00	0.00	0.00	-46.40	-173.15

Bottom Hole Location									
MD (ft)	Inc (°)	Az (°)	TVD (ft)	Local N (ft)	Local E (ft)	Grid East (US ft)	Grid North (US ft)	Latitude	Longitude
17392.70	90.000	180.125	7397.00	-10447.64	-2158.10	3234278.88	1234323.37	39°58'24.8520"N	104°39'50.6160"W

Targets									
Name	MD (ft)	TVD (ft)	Local N (ft)	Local E (ft)	Grid East (US ft)	Grid North (US ft)	Latitude	Longitude	
SEC.04-T01S-R65W	N/A	62.00	62.59	-5726.34	3230610.94	1244798.80	40°00'8.7120"N	104°40'36.4800"W	
SEC.0409-T01S-R65W 470' SETBACK	N/A	62.00	62.59	-5726.34	3230610.94	1244798.80	40°00'8.7120"N	104°40'36.4800"W	
SEC.09-T01S-R65W	N/A	62.00	62.59	-5726.34	3230610.94	1244798.80	40°00'8.7120"N	104°40'36.4800"W	
Desha 4-4-3L BHL REV-1(470'FNL & 1268'FEL,SEC.09)	17392.70	7397.00	-10447.64	-2158.10	3234278.88	1234323.37	39°58'24.8520"N	104°39'50.6160"W	
Desha 4-4-3L LP REV-1(470'FNL & 1268'FEL,SEC.04)	8037.80	7397.00	-1092.77	-2137.67	3234210.31	1243677.68	39°59'57.3000"N	104°39'50.3840"W	



Well Profile Data								
Design Comment	MD (ft)	Inc (°)	Az (°)	TVD (ft)	Local N (ft)	Local E (ft)	DLS (°/100ft)	VS (ft)
Tie On	20.50	0.000	255.000	20.50	0.00	0.00	0.00	0.00
End of Tangent	500.00	0.000	255.000	500.00	0.00	0.00	0.00	0.00
End of Build (J)	1450.00	19.000	255.000	1432.68	-40.40	-150.76	2.00	70.06
End of Tangent (J)	4650.00	19.000	255.000	4458.34	-310.04	-1157.08	0.00	537.70
Build (XS)	4738.98	19.549	249.870	4542.34	-318.91	-1185.05	2.00	552.04
KOP	7343.24	19.549	249.870	6996.48	-618.81	-2003.22	0.00	1011.25
LANDING	8037.80	90.000	180.125	7397.00	-1092.77	-2137.67	12.00	1502.61
TD	17392.70	90.000	180.125	7397.00	-10447.64	-2158.10	0.00	10668.21





Planned Wellpath Report

Desha 4-4-3L PWP Rev-A.0

Page 1 of 7



REFERENCE WELLPATH IDENTIFICATION

Operator	CONFLUENCE RESOURCES	Well	Desha 4-4-3L
Field	WELD COUNTY (NAD83, TRUE NORTH)	API/Legal	
Facility	SEC.34-T01N-R65W	Wellbore	Desha 4-4-3L PWB
Slot	SLOT#16 Desha 4-4-3L (620'FSL & 893'FWL,SEC.34)		

REPORT SETUP INFORMATION

Projection System	NAD83 / Lambert Colorado SP, Northern Zone (501), US feet	Software System	WellArchitect® 6.0
North Reference	True	User	Painsetr
Scale	0.999966	Report Generated	10/7/2020 at 1:25:20 PM
Convergence at slot	0.55° East	Database	WA_Denver

WELLPATH LOCATION

	Local coordinates		Grid coordinates		Geographic coordinates	
	North[ft]	East[ft]	Easting[US ft]	Northing[US ft]	Latitude	Longitude
Slot Location	0.00	151.28	3236337.41	1244790.70	40.0022500°	-104.6563600°
Facility Reference Pt			3236186.14	1244789.26	40.0022500°	-104.6569000°
Field Reference Pt			3230456.90	1245096.09	40.0032400°	-104.6773400°

WELLPATH DATUM

Calculation method	Minimum curvature	Rig (20.5') (RT) to Facility Vertical Datum	5160.50ft
Horizontal Reference Pt	Slot	Rig (20.5') (RT) to Mean Sea Level	5160.50ft
Vertical Reference Pt	Rig (20.5') (RT)	Rig (20.5') (RT) to Mud Line at Slot (SLOT#16 Desha 4-4-3L (620'FSL & 893'FWL,SEC.34))	5160.50ft
MD Reference Pt	Rig (20.5') (RT)	Section Origin	N 0.00, E 0.00 ft
Field Vertical Reference	Mean Sea Level	Section Azimuth	191.67°

Planned Wellpath Report

Desha 4-4-3L PWP Rev-A.0

Page 2 of 7

REFERENCE WELLPATH IDENTIFICATION

Operator	CONFLUENCE RESOURCES	Well	Desha 4-4-3L
Field	WELD COUNTY (NAD83, TRUE NORTH)	API/Legal	
Facility	SEC.34-T01N-R65W	Wellbore	Desha 4-4-3L PWB
Slot	SLOT#16 Desha 4-4-3L (620'FSL & 893'FWL,SEC.34)		

WELLPATH DATA (182 stations) † = interpolated, ‡ = extrapolated station

MD [ft]	Inclination [°]	Azimuth [°]	TVD [ft]	Vert Sect [ft]	North [ft]	East [ft]	Grid East [US ft]	Grid North [US ft]	Latitude	Longitude	DLS [°/100ft]	Comments
0.00†	0.000	255.000	0.00	0.00	0.00	0.00	3236337.41	1244790.69	40.0022500	-104.6563600	0.00	
20.50	0.000	255.000	20.50	0.00	0.00	0.00	3236337.41	1244790.69	40.0022500	-104.6563600	0.00	Tie On
120.50†	0.000	255.000	120.50	0.00	0.00	0.00	3236337.41	1244790.69	40.0022500	-104.6563600	0.00	
220.50†	0.000	255.000	220.50	0.00	0.00	0.00	3236337.41	1244790.69	40.0022500	-104.6563600	0.00	
320.50†	0.000	255.000	320.50	0.00	0.00	0.00	3236337.41	1244790.69	40.0022500	-104.6563600	0.00	
420.50†	0.000	255.000	420.50	0.00	0.00	0.00	3236337.41	1244790.69	40.0022500	-104.6563600	0.00	
500.00	0.000	255.000	500.00	0.00	0.00	0.00	3236337.41	1244790.69	40.0022500	-104.6563600	0.00	End of Tangent
520.50†	0.410	255.000	520.50	0.03	-0.02	-0.07	3236337.34	1244790.68	40.0022499	-104.6563603	2.00	
620.50†	2.410	255.000	620.46	1.14	-0.66	-2.45	3236334.97	1244790.02	40.0022482	-104.6563687	2.00	
720.50†	4.410	255.000	720.28	3.81	-2.20	-8.19	3236329.24	1244788.42	40.0022440	-104.6563892	2.00	
820.50†	6.410	255.000	819.83	8.04	-4.64	-17.30	3236320.16	1244785.90	40.0022373	-104.6564217	2.00	
920.50†	8.410	255.000	918.99	13.83	-7.97	-29.76	3236307.73	1244782.44	40.0022281	-104.6564662	2.00	
1020.50†	10.410	255.000	1017.64	21.17	-12.20	-45.55	3236291.98	1244778.06	40.0022165	-104.6565226	2.00	
1120.50†	12.410	255.000	1115.66	30.05	-17.32	-64.66	3236272.93	1244772.76	40.0022024	-104.6565908	2.00	
1220.50†	14.410	255.000	1212.93	40.46	-23.33	-87.06	3236250.58	1244766.54	40.0021860	-104.6566707	2.00	
1320.50†	16.410	255.000	1309.33	52.38	-30.20	-112.72	3236224.99	1244759.42	40.0021671	-104.6567624	2.00	
1420.50†	18.410	255.000	1404.74	65.81	-37.95	-141.62	3236196.16	1244751.40	40.0021458	-104.6568655	2.00	
1450.00	19.000	255.000	1432.68	70.06	-40.40	-150.76	3236187.05	1244748.87	40.0021391	-104.6568981	2.00	End of Build (J)
1520.50†	19.000	255.000	1499.34	80.36	-46.34	-172.93	3236164.94	1244742.72	40.0021228	-104.6569773	0.00	
1620.50†	19.000	255.000	1593.89	94.97	-54.76	-204.38	3236133.57	1244733.99	40.0020997	-104.6570895	0.00	
1720.50†	19.000	255.000	1688.45	109.59	-63.19	-235.82	3236102.21	1244725.27	40.0020765	-104.6572018	0.00	
1820.50†	19.000	255.000	1783.00	124.20	-71.62	-267.27	3236070.84	1244716.54	40.0020534	-104.6573140	0.00	
1920.50†	19.000	255.000	1877.55	138.82	-80.04	-298.72	3236039.48	1244707.82	40.0020303	-104.6574263	0.00	
2020.50†	19.000	255.000	1972.10	153.43	-88.47	-330.17	3236008.11	1244699.09	40.0020071	-104.6575385	0.00	
2120.50†	19.000	255.000	2066.65	168.04	-96.89	-361.61	3235976.75	1244690.37	40.0019840	-104.6576508	0.00	
2220.50†	19.000	255.000	2161.21	182.66	-105.32	-393.06	3235945.38	1244681.64	40.0019609	-104.6577630	0.00	
2320.50†	19.000	255.000	2255.76	197.27	-113.75	-424.51	3235914.02	1244672.92	40.0019377	-104.6578753	0.00	
2420.50†	19.000	255.000	2350.31	211.88	-122.17	-455.96	3235882.65	1244664.19	40.0019146	-104.6579875	0.00	
2520.50†	19.000	255.000	2444.86	226.50	-130.60	-487.40	3235851.29	1244655.47	40.0018915	-104.6580998	0.00	
2620.50†	19.000	255.000	2539.41	241.11	-139.03	-518.85	3235819.92	1244646.74	40.0018683	-104.6582120	0.00	
2720.50†	19.000	255.000	2633.97	255.73	-147.45	-550.30	3235788.56	1244638.02	40.0018452	-104.6583243	0.00	
2820.50†	19.000	255.000	2728.52	270.34	-155.88	-581.75	3235757.19	1244629.29	40.0018221	-104.6584365	0.00	
2920.50†	19.000	255.000	2823.07	284.95	-164.30	-613.19	3235725.83	1244620.57	40.0017989	-104.6585488	0.00	
3020.50†	19.000	255.000	2917.62	299.57	-172.73	-644.64	3235694.47	1244611.84	40.0017758	-104.6586610	0.00	
3120.50†	19.000	255.000	3012.17	314.18	-181.16	-676.09	3235663.10	1244603.12	40.0017527	-104.6587733	0.00	
3220.50†	19.000	255.000	3106.72	328.79	-189.58	-707.54	3235631.74	1244594.40	40.0017295	-104.6588855	0.00	
3320.50†	19.000	255.000	3201.28	343.41	-198.01	-738.98	3235600.37	1244585.67	40.0017064	-104.6589978	0.00	
3420.50†	19.000	255.000	3295.83	358.02	-206.44	-770.43	3235569.01	1244576.95	40.0016833	-104.6591100	0.00	
3520.50†	19.000	255.000	3390.38	372.63	-214.86	-801.88	3235537.64	1244568.22	40.0016601	-104.6592223	0.00	
3620.50†	19.000	255.000	3484.93	387.25	-223.29	-833.33	3235506.28	1244559.50	40.0016370	-104.6593345	0.00	
3720.50†	19.000	255.000	3579.48	401.86	-231.72	-864.77	3235474.91	1244550.77	40.0016139	-104.6594467	0.00	
3820.50†	19.000	255.000	3674.04	416.48	-240.14	-896.22	3235443.55	1244542.05	40.0015907	-104.6595590	0.00	
3920.50†	19.000	255.000	3768.59	431.09	-248.57	-927.67	3235412.18	1244533.32	40.0015676	-104.6596712	0.00	
4020.50†	19.000	255.000	3863.14	445.70	-256.99	-959.12	3235380.82	1244524.60	40.0015445	-104.6597835	0.00	
4120.50†	19.000	255.000	3957.69	460.32	-265.42	-990.56	3235349.45	1244515.87	40.0015213	-104.6598957	0.00	



Planned Wellpath Report

Desha 4-4-3L PWP Rev-A.0

Page 3 of 7



REFERENCE WELLPATH IDENTIFICATION

Operator	CONFLUENCE RESOURCES	Well	Desha 4-4-3L
Field	WELD COUNTY (NAD83, TRUE NORTH)	API/Legal	
Facility	SEC.34-T01N-R65W	Wellbore	Desha 4-4-3L PWB
Slot	SLOT#16 Desha 4-4-3L (620'FSL & 893'FWL,SEC.34)		

WELLPATH DATA (182 stations) † = interpolated, ‡ = extrapolated station

MD [ft]	Inclination [°]	Azimuth [°]	TVD [ft]	Vert Sect [ft]	North [ft]	East [ft]	Grid East [US ft]	Grid North [US ft]	Latitude	Longitude	DLS [°/100ft]	Comments
4220.50†	19.000	255.000	4052.24	474.93	-273.85	-1022.01	3235318.09	1244507.15	40.0014982	-104.6600080	0.00	
4320.50†	19.000	255.000	4146.80	489.54	-282.27	-1053.46	3235286.72	1244498.42	40.0014751	-104.6601202	0.00	
4420.50†	19.000	255.000	4241.35	504.16	-290.70	-1084.91	3235255.36	1244489.70	40.0014519	-104.6602325	0.00	
4520.50†	19.000	255.000	4335.90	518.77	-299.13	-1116.35	3235223.99	1244480.97	40.0014288	-104.6603447	0.00	
4620.50†	19.000	255.000	4430.45	533.39	-307.55	-1147.80	3235192.63	1244472.25	40.0014057	-104.6604570	0.00	
4650.00	19.000	255.000	4458.34	537.70	-310.04	-1157.08	3235183.38	1244469.67	40.0013988	-104.6604901	0.00	End of Tangent (J)
4720.50†	19.423	250.911	4524.92	548.84	-316.84	-1179.24	3235161.28	1244462.66	40.0013802	-104.6605692	2.00	
4738.98	19.549	249.870	4542.34	552.04	-318.91	-1185.05	3235155.49	1244460.54	40.0013745	-104.6605899	2.00	Build (XS)
4820.50†	19.549	249.870	4619.16	566.42	-328.30	-1210.66	3235129.97	1244450.91	40.0013487	-104.6606813	0.00	
4920.50†	19.549	249.870	4713.40	584.05	-339.81	-1242.08	3235098.67	1244439.09	40.0013171	-104.6607935	0.00	
5020.50†	19.549	249.870	4807.63	601.68	-351.33	-1273.49	3235067.36	1244427.28	40.0012855	-104.6609056	0.00	
5120.50†	19.549	249.870	4901.87	619.32	-362.85	-1304.91	3235036.06	1244415.46	40.0012539	-104.6610178	0.00	
5220.50†	19.549	249.870	4996.11	636.95	-374.36	-1336.33	3235004.76	1244403.65	40.0012222	-104.6611299	0.00	
5320.50†	19.549	249.870	5090.34	654.58	-385.88	-1367.74	3234973.45	1244391.84	40.0011906	-104.6612420	0.00	
5420.50†	19.549	249.870	5184.58	672.22	-397.39	-1399.16	3234942.15	1244380.02	40.0011590	-104.6613542	0.00	
5520.50†	19.549	249.870	5278.81	689.85	-408.91	-1430.58	3234910.84	1244368.21	40.0011274	-104.6614663	0.00	
5620.50†	19.549	249.870	5373.05	707.48	-420.42	-1461.99	3234879.54	1244356.40	40.0010958	-104.6615784	0.00	
5720.50†	19.549	249.870	5467.28	725.12	-431.94	-1493.41	3234848.23	1244344.58	40.0010642	-104.6616906	0.00	
5820.50†	19.549	249.870	5561.52	742.75	-443.46	-1524.83	3234816.93	1244332.77	40.0010325	-104.6618027	0.00	
5920.50†	19.549	249.870	5655.76	760.38	-454.97	-1556.24	3234785.62	1244320.95	40.0010009	-104.6619148	0.00	
6020.50†	19.549	249.870	5749.99	778.01	-466.49	-1587.66	3234754.32	1244309.14	40.0009693	-104.6620270	0.00	
6120.50†	19.549	249.870	5844.23	795.65	-478.00	-1619.08	3234723.01	1244297.33	40.0009377	-104.6621391	0.00	
6220.50†	19.549	249.870	5938.46	813.28	-489.52	-1650.49	3234691.71	1244285.51	40.0009061	-104.6622513	0.00	
6320.50†	19.549	249.870	6032.70	830.91	-501.04	-1681.91	3234660.41	1244273.70	40.0008745	-104.6623634	0.00	
6420.50†	19.549	249.870	6126.94	848.55	-512.55	-1713.33	3234629.10	1244261.89	40.0008428	-104.6624755	0.00	
6520.50†	19.549	249.870	6221.17	866.18	-524.07	-1744.74	3234597.80	1244250.07	40.0008112	-104.6625877	0.00	
6620.50†	19.549	249.870	6315.41	883.81	-535.58	-1776.16	3234566.49	1244238.26	40.0007796	-104.6626998	0.00	
6720.50†	19.549	249.870	6409.64	901.45	-547.10	-1807.58	3234535.19	1244226.44	40.0007480	-104.6628119	0.00	
6820.50†	19.549	249.870	6503.88	919.08	-558.61	-1838.99	3234503.88	1244214.63	40.0007164	-104.6629241	0.00	
6920.50†	19.549	249.870	6598.11	936.71	-570.13	-1870.41	3234472.58	1244202.82	40.0006848	-104.6630362	0.00	
7020.50†	19.549	249.870	6692.35	954.34	-581.65	-1901.83	3234441.27	1244191.00	40.0006531	-104.6631483	0.00	
7120.50†	19.549	249.870	6786.59	971.98	-593.16	-1933.24	3234409.97	1244179.19	40.0006215	-104.6632605	0.00	
7220.50†	19.549	249.870	6880.82	989.61	-604.68	-1964.66	3234378.66	1244167.38	40.0005899	-104.6633726	0.00	
7320.50†	19.549	249.870	6975.06	1007.24	-616.19	-1996.08	3234347.36	1244155.56	40.0005583	-104.6634847	0.00	
7343.24	19.549	249.870	6996.48	1011.25	-618.81	-2003.22	3234340.24	1244152.88	40.0005511	-104.6635102	0.00	KOP
7420.50†	24.169	228.051	7068.29	1030.84	-633.87	-2027.17	3234316.44	1244137.60	40.0005098	-104.6635957	12.00	
7520.50†	33.041	210.933	7156.14	1073.21	-671.07	-2056.52	3234287.45	1244100.11	40.0004076	-104.6637005	12.00	
7620.50†	43.315	200.815	7234.72	1133.03	-726.72	-2082.82	3234261.68	1244044.22	40.0002548	-104.6637943	12.00	
7720.50†	54.190	194.032	7300.60	1207.69	-798.38	-2104.92	3234240.26	1243972.35	40.0000581	-104.6638732	12.00	
7820.50†	65.352	188.917	7350.89	1293.91	-882.93	-2121.85	3234224.13	1243887.65	39.9998260	-104.6639336	12.00	
7920.50†	76.659	184.656	7383.40	1387.93	-976.65	-2132.89	3234213.99	1243793.83	39.9995687	-104.6639730	12.00	
8020.50†	88.030	180.781	7396.70	1485.64	-1075.47	-2137.54	3234210.28	1243694.98	39.9992975	-104.6639895	12.00	
8037.80	90.000	180.125	7397.00†	1502.61	-1092.77	-2137.67	3234210.31	1243677.68	39.9992500	-104.6639900	12.00	LANDING
8120.50†	90.000	180.125	7397.00	1583.64	-1175.47	-2137.85	3234210.92	1243594.98	39.9990230	-104.6639906	0.00	
8220.50†	90.000	180.125	7397.00	1681.61	-1275.47	-2138.07	3234211.65	1243494.99	39.9987485	-104.6639914	0.00	

Planned Wellpath Report

Desha 4-4-3L PWP Rev-A.0

Page 4 of 7

REFERENCE WELLPATH IDENTIFICATION

Operator	CONFLUENCE RESOURCES	Well	Desha 4-4-3L
Field	WELD COUNTY (NAD83, TRUE NORTH)	API/Legal	
Facility	SEC.34-T01N-R65W	Wellbore	Desha 4-4-3L PWB
Slot	SLOT#16 Desha 4-4-3L (620'FSL & 893'FWL,SEC.34)		

WELLPATH DATA (182 stations) † = interpolated, ‡ = extrapolated station

MD [ft]	Inclination [°]	Azimuth [°]	TVD [ft]	Vert Sect [ft]	North [ft]	East [ft]	Grid East [US ft]	Grid North [US ft]	Latitude	Longitude	DLS [°/100ft]	Comments
8320.50†	90.000	180.125	7397.00	1779.59	-1375.47	-2138.29	3234212.38	1243395.00	39.9984740	-104.6639921	0.00	
8420.50†	90.000	180.125	7397.00	1877.57	-1475.47	-2138.51	3234213.11	1243295.00	39.9981995	-104.6639929	0.00	
8520.50†	90.000	180.125	7397.00	1975.54	-1575.47	-2138.73	3234213.85	1243195.01	39.9979250	-104.6639936	0.00	
8620.50†	90.000	180.125	7397.00	2073.52	-1675.47	-2138.94	3234214.58	1243095.02	39.9976504	-104.6639944	0.00	
8720.50†	90.000	180.125	7397.00	2171.49	-1775.47	-2139.16	3234215.31	1242995.02	39.9973759	-104.6639951	0.00	
8820.50†	90.000	180.125	7397.00	2269.47	-1875.47	-2139.38	3234216.05	1242895.03	39.9971014	-104.6639959	0.00	
8920.50†	90.000	180.125	7397.00	2367.45	-1975.47	-2139.60	3234216.78	1242795.03	39.9968269	-104.6639966	0.00	
9020.50†	90.000	180.125	7397.00	2465.42	-2075.47	-2139.82	3234217.51	1242695.04	39.9965524	-104.6639974	0.00	
9120.50†	90.000	180.125	7397.00	2563.40	-2175.47	-2140.04	3234218.25	1242595.05	39.9962779	-104.6639981	0.00	
9220.50†	90.000	180.125	7397.00	2661.38	-2275.46	-2140.25	3234218.98	1242495.05	39.9960034	-104.6639989	0.00	
9320.50†	90.000	180.125	7397.00	2759.35	-2375.46	-2140.47	3234219.71	1242395.06	39.9957289	-104.6639996	0.00	
9420.50†	90.000	180.125	7397.00	2857.33	-2475.46	-2140.69	3234220.44	1242295.07	39.9954544	-104.6640003	0.00	
9520.50†	90.000	180.125	7397.00	2955.31	-2575.46	-2140.91	3234221.18	1242195.07	39.9951799	-104.6640011	0.00	
9620.50†	90.000	180.125	7397.00	3053.28	-2675.46	-2141.13	3234221.91	1242095.08	39.9949054	-104.6640018	0.00	
9720.50†	90.000	180.125	7397.00	3151.26	-2775.46	-2141.35	3234222.64	1241995.08	39.9946309	-104.6640026	0.00	
9820.50†	90.000	180.125	7397.00	3249.24	-2875.46	-2141.56	3234223.38	1241895.09	39.9943563	-104.6640033	0.00	
9920.50†	90.000	180.125	7397.00	3347.21	-2975.46	-2141.78	3234224.11	1241795.10	39.9940818	-104.6640041	0.00	
10020.50†	90.000	180.125	7397.00	3445.19	-3075.46	-2142.00	3234224.84	1241695.10	39.9938073	-104.6640048	0.00	
10120.50†	90.000	180.125	7397.00	3543.17	-3175.46	-2142.22	3234225.58	1241595.11	39.9935328	-104.6640056	0.00	
10220.50†	90.000	180.125	7397.00	3641.14	-3275.46	-2142.44	3234226.31	1241495.12	39.9932583	-104.6640063	0.00	
10320.50†	90.000	180.125	7397.00	3739.12	-3375.46	-2142.66	3234227.04	1241395.12	39.9929838	-104.6640071	0.00	
10420.50†	90.000	180.125	7397.00	3837.09	-3475.46	-2142.87	3234227.78	1241295.13	39.9927093	-104.6640078	0.00	
10520.50†	90.000	180.125	7397.00	3935.07	-3575.46	-2143.09	3234228.51	1241195.13	39.9924348	-104.6640086	0.00	
10620.50†	90.000	180.125	7397.00	4033.05	-3675.46	-2143.31	3234229.24	1241095.14	39.9921603	-104.6640093	0.00	
10720.50†	90.000	180.125	7397.00	4131.02	-3775.46	-2143.53	3234229.97	1240995.15	39.9918858	-104.6640101	0.00	
10820.50†	90.000	180.125	7397.00	4229.00	-3875.46	-2143.75	3234230.71	1240895.15	39.9916113	-104.6640108	0.00	
10920.50†	90.000	180.125	7397.00	4326.98	-3975.46	-2143.97	3234231.44	1240795.16	39.9913367	-104.6640116	0.00	
11020.50†	90.000	180.125	7397.00	4424.95	-4075.46	-2144.18	3234232.17	1240695.17	39.9910622	-104.6640123	0.00	
11120.50†	90.000	180.125	7397.00	4522.93	-4175.46	-2144.40	3234232.91	1240595.17	39.9907877	-104.6640131	0.00	
11220.50†	90.000	180.125	7397.00	4620.91	-4275.46	-2144.62	3234233.64	1240495.18	39.9905132	-104.6640138	0.00	
11320.50†	90.000	180.125	7397.00	4718.88	-4375.46	-2144.84	3234234.37	1240395.19	39.9902387	-104.6640146	0.00	
11420.50†	90.000	180.125	7397.00	4816.86	-4475.46	-2145.06	3234235.11	1240295.19	39.9899642	-104.6640153	0.00	
11520.50†	90.000	180.125	7397.00	4914.84	-4575.46	-2145.28	3234235.84	1240195.20	39.9896897	-104.6640161	0.00	
11620.50†	90.000	180.125	7397.00	5012.81	-4675.46	-2145.49	3234236.57	1240095.20	39.9894152	-104.6640168	0.00	
11720.50†	90.000	180.125	7397.00	5110.79	-4775.46	-2145.71	3234237.30	1239995.21	39.9891407	-104.6640176	0.00	
11820.50†	90.000	180.125	7397.00	5208.76	-4875.46	-2145.93	3234238.04	1239895.22	39.9888662	-104.6640183	0.00	
11920.50†	90.000	180.125	7397.00	5306.74	-4975.46	-2146.15	3234238.77	1239795.22	39.9885917	-104.6640191	0.00	
12020.50†	90.000	180.125	7397.00	5404.72	-5075.46	-2146.37	3234239.50	1239695.23	39.9883172	-104.6640198	0.00	
12120.50†	90.000	180.125	7397.00	5502.69	-5175.46	-2146.59	3234240.24	1239595.24	39.9880426	-104.6640206	0.00	
12220.50†	90.000	180.125	7397.00	5600.67	-5275.46	-2146.80	3234240.97	1239495.24	39.9877681	-104.6640213	0.00	
12320.50†	90.000	180.125	7397.00	5698.65	-5375.46	-2147.02	3234241.70	1239395.25	39.9874936	-104.6640221	0.00	
12420.50†	90.000	180.125	7397.00	5796.62	-5475.46	-2147.24	3234242.44	1239295.25	39.9872191	-104.6640228	0.00	
12520.50†	90.000	180.125	7397.00	5894.60	-5575.46	-2147.46	3234243.17	1239195.26	39.9869446	-104.6640235	0.00	
12620.50†	90.000	180.125	7397.00	5992.58	-5675.46	-2147.68	3234243.90	1239095.27	39.9866701	-104.6640243	0.00	
12720.50†	90.000	180.125	7397.00	6090.55	-5775.46	-2147.90	3234244.63	1238995.27	39.9863956	-104.6640250	0.00	

Planned Wellpath Report

Desha 4-4-3L PWP Rev-A.0

Page 5 of 7

REFERENCE WELLPATH IDENTIFICATION

Operator	CONFLUENCE RESOURCES	Well	Desha 4-4-3L
Field	WELD COUNTY (NAD83, TRUE NORTH)	API/Legal	
Facility	SEC.34-T01N-R65W	Wellbore	Desha 4-4-3L PWB
Slot	SLOT#16 Desha 4-4-3L (620'FSL & 893'FWL,SEC.34)		

WELLPATH DATA (182 stations) † = interpolated, ‡ = extrapolated station

MD [ft]	Inclination [°]	Azimuth [°]	TVD [ft]	Vert Sect [ft]	North [ft]	East [ft]	Grid East [US ft]	Grid North [US ft]	Latitude	Longitude	DLS [°/100ft]	Comments
12820.50†	90.000	180.125	7397.00	6188.53	-5875.46	-2148.11	3234245.37	1238895.28	39.9861211	-104.6640258	0.00	
12920.50†	90.000	180.125	7397.00	6286.51	-5975.46	-2148.33	3234246.10	1238795.29	39.9858466	-104.6640265	0.00	
13020.50†	90.000	180.125	7397.00	6384.48	-6075.46	-2148.55	3234246.83	1238695.29	39.9855721	-104.6640273	0.00	
13120.50†	90.000	180.125	7397.00	6482.46	-6175.46	-2148.77	3234247.57	1238595.30	39.9852976	-104.6640280	0.00	
13220.50†	90.000	180.125	7397.00	6580.43	-6275.46	-2148.99	3234248.30	1238495.30	39.9850231	-104.6640288	0.00	
13320.50†	90.000	180.125	7397.00	6678.41	-6375.46	-2149.21	3234249.03	1238395.31	39.9847485	-104.6640295	0.00	
13420.50†	90.000	180.125	7397.00	6776.39	-6475.45	-2149.42	3234249.77	1238295.32	39.9844740	-104.6640303	0.00	
13520.50†	90.000	180.125	7397.00	6874.36	-6575.45	-2149.64	3234250.50	1238195.32	39.9841995	-104.6640310	0.00	
13620.50†	90.000	180.125	7397.00	6972.34	-6675.45	-2149.86	3234251.23	1238095.33	39.9839250	-104.6640318	0.00	
13720.50†	90.000	180.125	7397.00	7070.32	-6775.45	-2150.08	3234251.97	1237995.34	39.9836505	-104.6640325	0.00	
13820.50†	90.000	180.125	7397.00	7168.29	-6875.45	-2150.30	3234252.70	1237895.34	39.9833760	-104.6640333	0.00	
13920.50†	90.000	180.125	7397.00	7266.27	-6975.45	-2150.52	3234253.43	1237795.35	39.9831015	-104.6640340	0.00	
14020.50†	90.000	180.125	7397.00	7364.25	-7075.45	-2150.73	3234254.16	1237695.35	39.9828270	-104.6640348	0.00	
14120.50†	90.000	180.125	7397.00	7462.22	-7175.45	-2150.95	3234254.90	1237595.36	39.9825525	-104.6640355	0.00	
14220.50†	90.000	180.125	7397.00	7560.20	-7275.45	-2151.17	3234255.63	1237495.37	39.9822780	-104.6640363	0.00	
14320.50†	90.000	180.125	7397.00	7658.18	-7375.45	-2151.39	3234256.36	1237395.37	39.9820035	-104.6640370	0.00	
14420.50†	90.000	180.125	7397.00	7756.15	-7475.45	-2151.61	3234257.10	1237295.38	39.9817289	-104.6640378	0.00	
14520.50†	90.000	180.125	7397.00	7854.13	-7575.45	-2151.83	3234257.83	1237195.39	39.9814544	-104.6640385	0.00	
14620.50†	90.000	180.125	7397.00	7952.11	-7675.45	-2152.04	3234258.56	1237095.39	39.9811799	-104.6640393	0.00	
14720.50†	90.000	180.125	7397.00	8050.08	-7775.45	-2152.26	3234259.30	1236995.40	39.9809054	-104.6640400	0.00	
14820.50†	90.000	180.125	7397.00	8148.06	-7875.45	-2152.48	3234260.03	1236895.40	39.9806309	-104.6640408	0.00	
14920.50†	90.000	180.125	7397.00	8246.03	-7975.45	-2152.70	3234260.76	1236795.41	39.9803564	-104.6640415	0.00	
15020.50†	90.000	180.125	7397.00	8344.01	-8075.45	-2152.92	3234261.49	1236695.42	39.9800819	-104.6640423	0.00	
15120.50†	90.000	180.125	7397.00	8441.99	-8175.45	-2153.14	3234262.23	1236595.42	39.9798074	-104.6640430	0.00	
15220.50†	90.000	180.125	7397.00	8539.96	-8275.45	-2153.35	3234262.96	1236495.43	39.9795329	-104.6640438	0.00	
15320.50†	90.000	180.125	7397.00	8637.94	-8375.45	-2153.57	3234263.69	1236395.44	39.9792584	-104.6640445	0.00	
15420.50†	90.000	180.125	7397.00	8735.92	-8475.45	-2153.79	3234264.43	1236295.44	39.9789839	-104.6640452	0.00	
15520.50†	90.000	180.125	7397.00	8833.89	-8575.45	-2154.01	3234265.16	1236195.45	39.9787093	-104.6640460	0.00	
15620.50†	90.000	180.125	7397.00	8931.87	-8675.45	-2154.23	3234265.89	1236095.45	39.9784348	-104.6640467	0.00	
15720.50†	90.000	180.125	7397.00	9029.85	-8775.45	-2154.45	3234266.63	1235995.46	39.9781603	-104.6640475	0.00	
15820.50†	90.000	180.125	7397.00	9127.82	-8875.45	-2154.66	3234267.36	1235895.47	39.9778858	-104.6640482	0.00	
15920.50†	90.000	180.125	7397.00	9225.80	-8975.45	-2154.88	3234268.09	1235795.47	39.9776113	-104.6640490	0.00	
16020.50†	90.000	180.125	7397.00	9323.78	-9075.45	-2155.10	3234268.82	1235695.48	39.9773368	-104.6640497	0.00	
16120.50†	90.000	180.125	7397.00	9421.75	-9175.45	-2155.32	3234269.56	1235595.49	39.9770623	-104.6640505	0.00	
16220.50†	90.000	180.125	7397.00	9519.73	-9275.45	-2155.54	3234270.29	1235495.49	39.9767878	-104.6640512	0.00	
16320.50†	90.000	180.125	7397.00	9617.70	-9375.45	-2155.76	3234271.02	1235395.50	39.9765133	-104.6640520	0.00	
16420.50†	90.000	180.125	7397.00	9715.68	-9475.45	-2155.97	3234271.76	1235295.50	39.9762388	-104.6640527	0.00	
16520.50†	90.000	180.125	7397.00	9813.66	-9575.45	-2156.19	3234272.49	1235195.51	39.9759643	-104.6640535	0.00	
16620.50†	90.000	180.125	7397.00	9911.63	-9675.45	-2156.41	3234273.22	1235095.52	39.9756898	-104.6640542	0.00	
16720.50†	90.000	180.125	7397.00	10009.61	-9775.45	-2156.63	3234273.96	1234995.52	39.9754152	-104.6640550	0.00	
16820.50†	90.000	180.125	7397.00	10107.59	-9875.45	-2156.85	3234274.69	1234895.53	39.9751407	-104.6640557	0.00	
16920.50†	90.000	180.125	7397.00	10205.56	-9975.45	-2157.06	3234275.42	1234795.54	39.9748662	-104.6640565	0.00	
17020.50†	90.000	180.125	7397.00	10303.54	-10075.45	-2157.28	3234276.16	1234695.54	39.9745917	-104.6640572	0.00	
17120.50†	90.000	180.125	7397.00	10401.52	-10175.45	-2157.50	3234276.89	1234595.55	39.9743172	-104.6640580	0.00	
17220.50†	90.000	180.125	7397.00	10499.49	-10275.45	-2157.72	3234277.62	1234495.55	39.9740427	-104.6640587	0.00	

REFERENCE WELLPATH IDENTIFICATION

Operator	CONFLUENCE RESOURCES	Well	Desha 4-4-3L
Field	WELD COUNTY (NAD83, TRUE NORTH)	API/Legal	
Facility	SEC.34-T01N-R65W	Wellbore	Desha 4-4-3L PWB
Slot	SLOT#16 Desha 4-4-3L (620'FSL & 893'FWL,SEC.34)		

WELLPATH DATA (182 stations) † = interpolated, ‡ = extrapolated station

MD [ft]	Inclination [°]	Azimuth [°]	TVD [ft]	Vert Sect [ft]	North [ft]	East [ft]	Grid East [US ft]	Grid North [US ft]	Latitude	Longitude	DLS [°/100ft]	Comments
17320.50†	90.000	180.125	7397.00	10597.47	-10375.45	-2157.94	3234278.35	1234395.56	39.9737682	-104.6640595	0.00	
17392.70	90.000	180.125	7397.00‡	10668.21	-10447.64	-2158.10	3234278.88	1234323.37	39.9735700	-104.6640600	0.00	TD

HOLE & CASING SECTIONS - Ref Wellbore: Desha 4-4-3L PWB Ref Wellpath: Desha 4-4-3L PWP Rev-A.0

String/Diameter	Start MD [ft]	End MD [ft]	Interval [ft]	Start TVD [ft]	End TVD [ft]	Start N/S [ft]	Start E/W [ft]	End N/S [ft]	End E/W [ft]
9.625in Casing Surface	20.50	1521.19	1500.69	20.50	1500.00	0.00	0.00	-46.40	-173.15

TARGETS

Name	MD [ft]	TVD [ft]	North [ft]	East [ft]	Grid East [US ft]	Grid North [US ft]	Latitude	Longitude	Shape
SEC.04-T01S-R65W	N/A	62.00	62.59	-5726.34	3230610.94	1244798.80	40.0024200	-104.6768000	polygon
2D Polygon: dimensions not calculated									
SEC.04/09-T01S-R65W 470' SETBACK	N/A	62.00	62.59	-5726.34	3230610.94	1244798.80	40.0024200	-104.6768000	polygon
2D Polygon: dimensions not calculated									
SEC.09-T01S-R65W	N/A	62.00	62.59	-5726.34	3230610.94	1244798.80	40.0024200	-104.6768000	polygon
2D Polygon: dimensions not calculated									
2) Desha 4-4-3L BHL REV-1 (470'FSL & 1268'FEL,SEC.09)	17392.70	7397.00	-10447.64	-2158.10	3234278.88	1234323.37	39.9735700	-104.6640600	point
1) Desha 4-4-3L LP REV-1 (470'FNL & 1268'FEL,SEC.04)	8037.80	7397.00	-1092.77	-2137.67	3234210.31	1243677.68	39.9992500	-104.6639900	point

SURVEY PROGRAM - Ref Wellbore: Desha 4-4-3L PWB Ref Wellpath: Desha 4-4-3L PWP Rev-A.0

Start MD [ft]	End MD [ft]	Positional Uncertainty Model	Log Name/Comment	Wellbore
20.50	1521.19	BH NaviTrak (2019) (Axial)		Desha 4-4-3L PWB
1521.19	17461.99	BH AutoTrak Curve/eXpress (2019) (Short spacing)		Desha 4-4-3L PWB

Planned Wellpath Report

Desha 4-4-3L PWP Rev-A.0

Page 7 of 7

REFERENCE WELLPATH IDENTIFICATION

Operator	CONFLUENCE RESOURCES	Well	Desha 4-4-3L
Field	WELD COUNTY (NAD83, TRUE NORTH)	API/Legal	
Facility	SEC.34-T01N-R65W	Wellbore	Desha 4-4-3L PWB
Slot	SLOT#16 Desha 4-4-3L (620'FSL & 893'FWL,SEC.34)		

DESIGN COMMENTS

MD [ft]	Inclination [°]	Azimuth [°]	TVD [ft]	Comment
20.50	0.000	255.000	20.50	Tie On
500.00	0.000	255.000	500.00	End of Tangent
1450.00	19.000	255.000	1432.68	End of Build (J)
4650.00	19.000	255.000	4458.34	End of Tangent (J)
4738.98	19.549	249.870	4542.34	Build (XS)
7343.24	19.549	249.870	6996.48	KOP
8037.80	90.000	180.125	7397.00	LANDING
17392.70	90.000	180.125	7397.00	TD