

CONFLUENCE RESOURCES

Location:	COLORADO	Slot:	SLOT#15 Desha 4-5-2L (620'FSL & 868'FWL,SEC.34)
Field:	WELD COUNTY (NAD83, TRUE NORTH)	Well:	Desha 4-5-2L
Facility:	SEC.34-T01N-R65W	Wellbore:	Desha 4-5-2L PWB
Plot reference wellpath is Desha 4-5-2L PWP RevA.0		Grid System: NAD83 / Lambert Colorado SP, Northern Zone (501), US feet	
True vertical depths are referenced to Rig (20.5) (RT)		North Reference: True north	
Reference wellpath measured depths are referenced to Rig (20.5) (RT)		Scale: True distance	
Rig (20.5) to Mean Sea Level: 5160.5 feet		Coordinates are in feet referenced to Slot	
Mean Sea Level to Mud line (At Slot: SLOT#15 Desha 4-5-2L (620'FSL & 868'FWL,SEC.34): 0 feet		Depths are in feet	
Offset wellpath MDs are referenced to each path's default MD datum		Created by: painsetr on 2020-10-07, Database: WA_Denver	

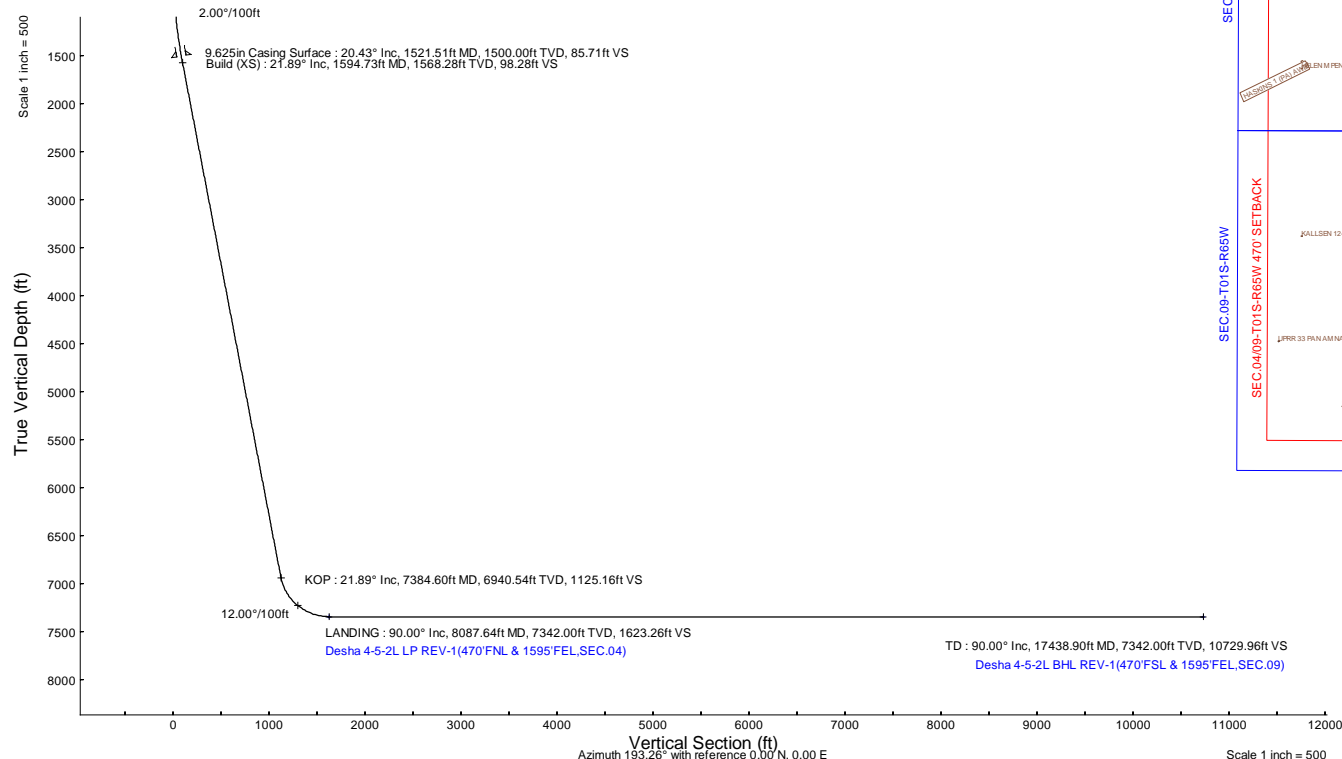
Location Information					
Facility Name		Grid East (US ft)	Grid North (US ft)	Latitude	Longitude
SEC.34-T01N-R65W		3236186.141	1244789.256	40°00'8.100"N	104°39'24.840"W
Slot	Local N (ft)	Local E (ft)	Grid East (US ft)	Grid North (US ft)	Longitude
SLOT#15 Desha 4-5-2L (620'FSL & 868'FWL,SEC.34)	0.00	126.07	3236312.200	1244790.455	40°00'8.100"N
Rig (20.5) (RT) to Mud line (At Slot: SLOT#15 Desha 4-5-2L (620'FSL & 868'FWL,SEC.34)					5160.5R
Mean Sea Level to Mud line (At Slot: SLOT#15 Desha 4-5-2L (620'FSL & 868'FWL,SEC.34)					0R
Rig (20.5) (RT) to Mean Sea Level					5160.5R

Survey Program					
Start MD (ft)	End MD (ft)	Tool	Model	Log Name/Comment	Wellbore
20.50	1521.51	BH Navitrak (2019)	BH Navitrak (2019) (Axial)		Desha 4-5-2L PWB
1521.51	17529.50	BH AutoTrak Curve/xpress (2019)	BH AutoTrak Curve/xpress (2019) (Short spacing)		Desha 4-5-2L PWB

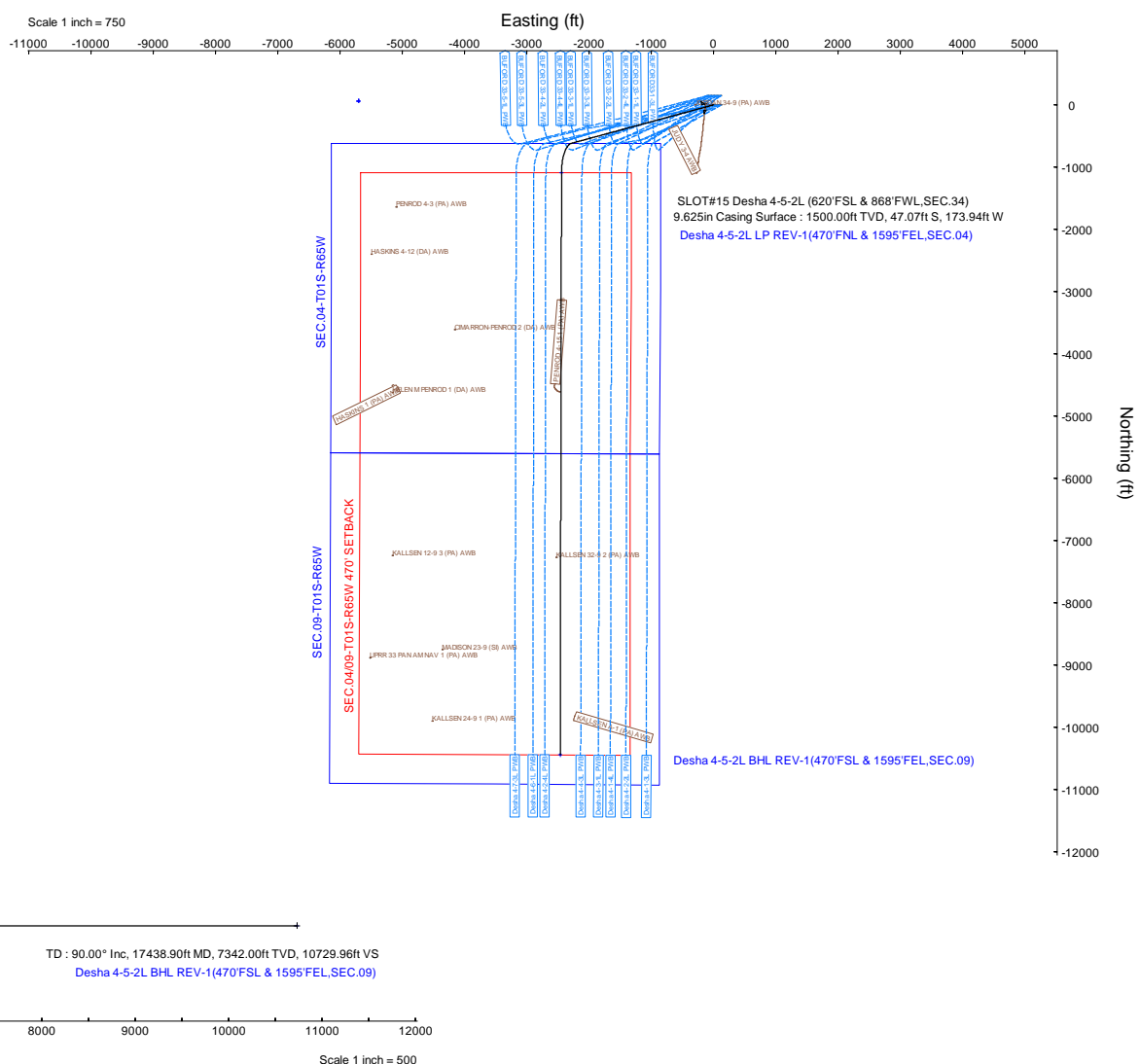
Hole and Casing Sections									
Name	Start MD (ft)	End MD (ft)	Interval (ft)	Start TVD (ft)	End TVD (ft)	Start Local N (ft)	Start Local E (ft)	End Local N (ft)	End Local E (ft)
9.625in Casing Surface	20.50	1521.51	1501.01	20.50	1500.00	0.00	0.00	-47.07	-173.94

Bottom Hole Location									
MD (ft)	Inc (")	Az (°)	TVD (ft)	Local N (ft)	Local E (ft)	Grid East (US ft)	Grid North (US ft)	Latitude	Longitude
17438.90	90.000	180.126	7342.00	-10443.97	-2460.79	3233950.96	1234323.92	39°58'24.8880"N	104°39'54.8280"W

Targets									
Name	MD (ft)	TVD (ft)	Local N (ft)	Local E (ft)	Grid East (US ft)	Grid North (US ft)	Latitude	Longitude	
SEC.04-T01S-R65W	N/A	62.00	62.58	-5701.13	3230610.94	1244798.80	40°00'8.7120"N	104°40'36.4800"W	
SEC.0409-T01S-R65W 470' SETBACK	N/A	62.00	62.58	-5701.13	3230610.94	1244798.80	40°00'8.7120"N	104°40'36.4800"W	
SEC.09-T01S-R65W	N/A	62.00	62.58	-5701.13	3230610.94	1244798.80	40°00'8.7120"N	104°40'36.4800"W	
Desha 4-5-2L BHL REV-1(470'FSL & 1595'FEL,SEC.09)	17438.90	7342.00	-10443.97	-2460.79	3233950.96	1234323.92	39°58'24.8880"N	104°39'54.8280"W	
Desha 4-5-2L LP REV-1(470'FSL & 1595'FEL,SEC.04)	8087.64	7342.00	-1092.74	-2440.25	3233882.54	1243674.59	39°59'57.3000"N	104°39'54.5760"W	



Well Profile Data								
Design Comment	MD (ft)	Inc (")	Az (°)	TVD (ft)	Local N (ft)	Local E (ft)	DLS (°/100ft)	VS (ft)
Tie On	20.50	0.000	254.858	20.50	0.00	0.00	0.00	0.00
End of Tangent	500.00	0.000	254.858	500.00	0.00	0.00	0.00	0.00
Build (XS)	1594.73	21.895	254.858	1568.28	-53.97	-199.46	2.00	98.28
KOP	7384.60	21.895	254.858	6940.54	-617.93	-2283.56	0.00	1125.16
LANDING	8087.64	90.000	180.126	7342.00	-1092.74	-2440.25	12.00	1623.26
TD	17438.90	90.000	180.126	7342.00	-10443.97	-2460.79	0.00	10729.96



Planned Wellpath Report

Desha 4-5-2L PWP Rev-A.0

Page 1 of 7

REFERENCE WELLPATH IDENTIFICATION

Operator	CONFLUENCE RESOURCES	Well	Desha 4-5-2L
Field	WELD COUNTY (NAD83, TRUE NORTH)	API/Legal	
Facility	SEC.34-T01N-R65W	Wellbore	Desha 4-5-2L PWB
Slot	SLOT#15 Desha 4-5-2L (620'FSL & 868'FWL,SEC.34)		

REPORT SETUP INFORMATION

Projection System	NAD83 / Lambert Colorado SP, Northern Zone (501), US feet	Software System	WellArchitect® 6.0
North Reference	True	User	Painsetr
Scale	0.999966	Report Generated	10/7/2020 at 1:20:12 PM
Convergence at slot	0.55° East	Database	WA_Denver

WELLPATH LOCATION

	Local coordinates		Grid coordinates		Geographic coordinates	
	North[ft]	East[ft]	Easting[US ft]	Northing[US ft]	Latitude	Longitude
Slot Location	0.00	126.07	3236312.20	1244790.46	40.0022500°	-104.6564500°
Facility Reference Pt			3236186.14	1244789.26	40.0022500°	-104.6569000°
Field Reference Pt			3230456.90	1245096.09	40.0032400°	-104.6773400°

WELLPATH DATUM

Calculation method	Minimum curvature	Rig (20.5') (RT) to Facility Vertical Datum	5160.50ft
Horizontal Reference Pt	Slot	Rig (20.5') (RT) to Mean Sea Level	5160.50ft
Vertical Reference Pt	Rig (20.5') (RT)	Rig (20.5') (RT) to Mud Line at Slot (SLOT#15 Desha 4-5-2L (620'FSL & 868'FWL,SEC.34))	5160.50ft
MD Reference Pt	Rig (20.5') (RT)	Section Origin	N 0.00, E 0.00 ft
Field Vertical Reference	Mean Sea Level	Section Azimuth	193.26°

Planned Wellpath Report

Desha 4-5-2L PWP Rev-A.0

Page 2 of 7

REFERENCE WELLPATH IDENTIFICATION

Operator	CONFLUENCE RESOURCES	Well	Desha 4-5-2L
Field	WELD COUNTY (NAD83, TRUE NORTH)	API/Legal	
Facility	SEC.34-T01N-R65W	Wellbore	Desha 4-5-2L PWB
Slot	SLOT#15 Desha 4-5-2L (620'FSL & 868'FWL,SEC.34)		

WELLPATH DATA (181 stations) † = interpolated, ‡ = extrapolated station

MD [ft]	Inclination [°]	Azimuth [°]	TVD [ft]	Vert Sect [ft]	North [ft]	East [ft]	Grid East [US ft]	Grid North [US ft]	Latitude	Longitude	DLS [°/100ft]	Comments
0.00†	0.000	254.858	0.00	0.00	0.00	0.00	3236312.20	1244790.46	40.0022500	-104.6564500	0.00	
20.50	0.000	254.858	20.50	0.00	0.00	0.00	3236312.20	1244790.46	40.0022500	-104.6564500	0.00	Tie On
120.50†	0.000	254.858	120.50	0.00	0.00	0.00	3236312.20	1244790.46	40.0022500	-104.6564500	0.00	
220.50†	0.000	254.858	220.50	0.00	0.00	0.00	3236312.20	1244790.46	40.0022500	-104.6564500	0.00	
320.50†	0.000	254.858	320.50	0.00	0.00	0.00	3236312.20	1244790.46	40.0022500	-104.6564500	0.00	
420.50†	0.000	254.858	420.50	0.00	0.00	0.00	3236312.20	1244790.46	40.0022500	-104.6564500	0.00	
500.00	0.000	254.858	500.00	0.00	0.00	0.00	3236312.20	1244790.46	40.0022500	-104.6564500	0.00	End of Tangent
520.50†	0.410	254.858	520.50	0.03	-0.02	-0.07	3236312.13	1244790.44	40.0022499	-104.6564503	2.00	
620.50†	2.410	254.858	620.46	1.21	-0.66	-2.45	3236309.76	1244789.77	40.0022482	-104.6564587	2.00	
720.50†	4.410	254.858	720.28	4.03	-2.22	-8.19	3236304.03	1244788.16	40.0022439	-104.6564792	2.00	
820.50†	6.410	254.858	819.83	8.52	-4.68	-17.29	3236294.96	1244785.61	40.0022372	-104.6565117	2.00	
920.50†	8.410	254.858	918.99	14.65	-8.05	-29.74	3236282.54	1244782.13	40.0022279	-104.6565561	2.00	
1020.50†	10.410	254.858	1017.64	22.43	-12.32	-45.52	3236266.80	1244777.71	40.0022162	-104.6566125	2.00	
1120.50†	12.410	254.858	1115.66	31.84	-17.48	-64.61	3236247.76	1244772.36	40.0022020	-104.6566806	2.00	
1220.50†	14.410	254.858	1212.93	42.87	-23.54	-87.00	3236225.43	1244766.09	40.0021854	-104.6567605	2.00	
1320.50†	16.410	254.858	1309.33	55.50	-30.48	-112.65	3236199.85	1244758.90	40.0021663	-104.6568521	2.00	
1420.50†	18.410	254.858	1404.74	69.73	-38.30	-141.53	3236171.05	1244750.81	40.0021449	-104.6569552	2.00	
1520.50†	20.410	254.858	1499.05	85.54	-46.98	-173.60	3236139.06	1244741.83	40.0021210	-104.6570697	2.00	
1594.73	21.895	254.858	1568.28	98.28	-53.97	-199.46	3236113.27	1244734.59	40.0021018	-104.6571620	2.00	Build (XS)
1620.50†	21.895	254.858	1592.19	102.85	-56.48	-208.74	3236104.02	1244731.99	40.0020949	-104.6571951	0.00	
1720.50†	21.895	254.858	1684.98	120.58	-66.22	-244.73	3236068.12	1244721.91	40.0020682	-104.6573236	0.00	
1820.50†	21.895	254.858	1777.77	138.32	-75.96	-280.73	3236032.22	1244711.83	40.0020415	-104.6574520	0.00	
1920.50†	21.895	254.858	1870.55	156.06	-85.70	-316.72	3235996.32	1244701.74	40.0020147	-104.6575805	0.00	
2020.50†	21.895	254.858	1963.34	173.79	-95.44	-352.72	3235960.42	1244691.66	40.0019880	-104.6577090	0.00	
2120.50†	21.895	254.858	2056.13	191.53	-105.19	-388.71	3235924.52	1244681.58	40.0019612	-104.6578375	0.00	
2220.50†	21.895	254.858	2148.91	209.26	-114.93	-424.71	3235888.62	1244671.50	40.0019345	-104.6579660	0.00	
2320.50†	21.895	254.858	2241.70	227.00	-124.67	-460.70	3235852.72	1244661.42	40.0019078	-104.6580945	0.00	
2420.50†	21.895	254.858	2334.49	244.74	-134.41	-496.70	3235816.82	1244651.34	40.0018810	-104.6582229	0.00	
2520.50†	21.895	254.858	2427.28	262.47	-144.15	-532.70	3235780.92	1244641.25	40.0018543	-104.6583514	0.00	
2620.50†	21.895	254.858	2520.06	280.21	-153.89	-568.69	3235745.02	1244631.17	40.0018275	-104.6584799	0.00	
2720.50†	21.895	254.858	2612.85	297.94	-163.63	-604.69	3235709.12	1244621.09	40.0018008	-104.6586084	0.00	
2820.50†	21.895	254.858	2705.64	315.68	-173.37	-640.68	3235673.22	1244611.01	40.0017741	-104.6587369	0.00	
2920.50†	21.895	254.858	2798.42	333.42	-183.11	-676.68	3235637.32	1244600.93	40.0017473	-104.6588654	0.00	
3020.50†	21.895	254.858	2891.21	351.15	-192.85	-712.67	3235601.42	1244590.84	40.0017206	-104.6589938	0.00	
3120.50†	21.895	254.858	2984.00	368.89	-202.59	-748.67	3235565.52	1244580.76	40.0016938	-104.6591223	0.00	
3220.50†	21.895	254.858	3076.79	386.62	-212.33	-784.67	3235529.62	1244570.68	40.0016671	-104.6592508	0.00	
3320.50†	21.895	254.858	3169.57	404.36	-222.07	-820.66	3235493.72	1244560.60	40.0016404	-104.6593793	0.00	
3420.50†	21.895	254.858	3262.36	422.10	-231.81	-856.66	3235457.82	1244550.52	40.0016136	-104.6595078	0.00	
3520.50†	21.895	254.858	3355.15	439.83	-241.55	-892.65	3235421.92	1244540.43	40.0015869	-104.6596363	0.00	
3620.50†	21.895	254.858	3447.93	457.57	-251.29	-928.65	3235386.02	1244530.35	40.0015601	-104.6597647	0.00	
3720.50†	21.895	254.858	3540.72	475.30	-261.03	-964.64	3235350.12	1244520.27	40.0015334	-104.6598932	0.00	
3820.50†	21.895	254.858	3633.51	493.04	-270.77	-1000.64	3235314.22	1244510.19	40.0015067	-104.6600217	0.00	
3920.50†	21.895	254.858	3726.29	510.77	-280.51	-1036.63	3235278.32	1244500.11	40.0014799	-104.6601502	0.00	
4020.50†	21.895	254.858	3819.08	528.51	-290.25	-1072.63	3235242.42	1244490.02	40.0014532	-104.6602787	0.00	
4120.50†	21.895	254.858	3911.87	546.25	-299.99	-1108.63	3235206.52	1244479.94	40.0014264	-104.6604071	0.00	

Planned Wellpath Report

Desha 4-5-2L PWP Rev-A.0

Page 3 of 7

REFERENCE WELLPATH IDENTIFICATION			
Operator	CONFLUENCE RESOURCES	Well	Desha 4-5-2L
Field	WELD COUNTY (NAD83, TRUE NORTH)	API/Legal	
Facility	SEC.34-T01N-R65W	Wellbore	Desha 4-5-2L PWB
Slot	SLOT#15 Desha 4-5-2L (620'FSL & 868'FWL,SEC.34)		

WELLPATH DATA (181 stations) † = interpolated, ‡ = extrapolated station												
MD [ft]	Inclination [°]	Azimuth [°]	TVD [ft]	Vert Sect [ft]	North [ft]	East [ft]	Grid East [US ft]	Grid North [US ft]	Latitude	Longitude	DLS [°/100ft]	Comments
4220.50†	21.895	254.858	4004.66	563.98	-309.73	-1144.62	3235170.62	1244469.86	40.0013997	-104.6605356	0.00	
4320.50†	21.895	254.858	4097.44	581.72	-319.47	-1180.62	3235134.72	1244459.78	40.0013729	-104.6606641	0.00	
4420.50†	21.895	254.858	4190.23	599.45	-329.21	-1216.61	3235098.82	1244449.70	40.0013462	-104.6607926	0.00	
4520.50†	21.895	254.858	4283.02	617.19	-338.95	-1252.61	3235062.92	1244439.61	40.0013195	-104.6609211	0.00	
4620.50†	21.895	254.858	4375.80	634.93	-348.69	-1288.60	3235027.02	1244429.53	40.0012927	-104.6610496	0.00	
4720.50†	21.895	254.858	4468.59	652.66	-358.43	-1324.60	3234991.12	1244419.45	40.0012660	-104.6611780	0.00	
4820.50†	21.895	254.858	4561.38	670.40	-368.17	-1360.59	3234955.22	1244409.37	40.0012392	-104.6613065	0.00	
4920.50†	21.895	254.858	4654.17	688.13	-377.91	-1396.59	3234919.32	1244399.29	40.0012125	-104.6614350	0.00	
5020.50†	21.895	254.858	4746.95	705.87	-387.65	-1432.59	3234883.42	1244389.20	40.0011857	-104.6615635	0.00	
5120.50†	21.895	254.858	4839.74	723.61	-397.40	-1468.58	3234847.52	1244379.12	40.0011590	-104.6616920	0.00	
5220.50†	21.895	254.858	4932.53	741.34	-407.14	-1504.58	3234811.62	1244369.04	40.0011323	-104.6618204	0.00	
5320.50†	21.895	254.858	5025.31	759.08	-416.88	-1540.57	3234775.72	1244358.96	40.0011055	-104.6619489	0.00	
5420.50†	21.895	254.858	5118.10	776.81	-426.62	-1576.57	3234739.82	1244348.88	40.0010788	-104.6620774	0.00	
5520.50†	21.895	254.858	5210.89	794.55	-436.36	-1612.56	3234703.92	1244338.79	40.0010520	-104.6622059	0.00	
5620.50†	21.895	254.858	5303.68	812.28	-446.10	-1648.56	3234668.02	1244328.71	40.0010253	-104.6623344	0.00	
5720.50†	21.895	254.858	5396.46	830.02	-455.84	-1684.55	3234632.12	1244318.63	40.0009985	-104.6624628	0.00	
5820.50†	21.895	254.858	5489.25	847.76	-465.58	-1720.55	3234596.22	1244308.55	40.0009718	-104.6625913	0.00	
5920.50†	21.895	254.858	5582.04	865.49	-475.32	-1756.55	3234560.32	1244298.47	40.0009450	-104.6627198	0.00	
6020.50†	21.895	254.858	5674.82	883.23	-485.06	-1792.54	3234524.42	1244288.38	40.0009183	-104.6628483	0.00	
6120.50†	21.895	254.858	5767.61	900.96	-494.80	-1828.54	3234488.52	1244278.30	40.0008915	-104.6629768	0.00	
6220.50†	21.895	254.858	5860.40	918.70	-504.54	-1864.53	3234452.62	1244268.22	40.0008648	-104.6631052	0.00	
6320.50†	21.895	254.858	5953.19	936.44	-514.28	-1900.53	3234416.72	1244258.14	40.0008381	-104.6632337	0.00	
6420.50†	21.895	254.858	6045.97	954.17	-524.02	-1936.52	3234380.82	1244248.06	40.0008113	-104.6633622	0.00	
6520.50†	21.895	254.858	6138.76	971.91	-533.76	-1972.52	3234344.92	1244237.98	40.0007846	-104.6634907	0.00	
6620.50†	21.895	254.858	6231.55	989.64	-543.50	-2008.52	3234309.02	1244227.89	40.0007578	-104.6636192	0.00	
6720.50†	21.895	254.858	6324.33	1007.38	-553.24	-2044.51	3234273.12	1244217.81	40.0007311	-104.6637476	0.00	
6820.50†	21.895	254.858	6417.12	1025.12	-562.98	-2080.51	3234237.22	1244207.73	40.0007043	-104.6638761	0.00	
6920.50†	21.895	254.858	6509.91	1042.85	-572.72	-2116.50	3234201.32	1244197.65	40.0006776	-104.6640046	0.00	
7020.50†	21.895	254.858	6602.69	1060.59	-582.46	-2152.50	3234165.42	1244187.57	40.0006508	-104.6641331	0.00	
7120.50†	21.895	254.858	6695.48	1078.32	-592.20	-2188.49	3234129.52	1244177.48	40.0006241	-104.6642616	0.00	
7220.50†	21.895	254.858	6788.27	1096.06	-601.94	-2224.49	3234093.62	1244167.40	40.0005973	-104.6643900	0.00	
7320.50†	21.895	254.858	6881.06	1113.79	-611.68	-2260.48	3234057.72	1244157.32	40.0005706	-104.6645185	0.00	
7384.60	21.895	254.858	6940.54	1125.16	-617.93	-2283.56	3234034.70	1244150.86	40.0005534	-104.6646009	0.00	KOP
7420.50†	23.311	244.256	6973.69	1132.82	-622.76	-2296.42	3234021.89	1244145.90	40.0005402	-104.6646468	12.00	
7520.50†	30.136	222.027	7063.18	1167.40	-650.10	-2331.18	3233987.40	1244118.23	40.0004651	-104.6647708	12.00	
7620.50†	39.331	208.366	7145.39	1220.20	-696.81	-2363.16	3233955.86	1244071.23	40.0003369	-104.6648850	12.00	
7720.50†	49.582	199.405	7216.75	1288.89	-760.83	-2390.96	3233928.67	1244006.94	40.0001611	-104.6649842	12.00	
7820.50†	60.338	192.882	7274.12	1370.48	-839.38	-2413.38	3233907.00	1243928.19	39.9999455	-104.6650642	12.00	
7920.50†	71.351	187.644	7315.00	1461.41	-929.01	-2429.42	3233891.81	1243838.41	39.9996995	-104.6651214	12.00	
8020.50†	82.491	183.055	7337.61	1557.70	-1025.82	-2438.40	3233883.75	1243741.52	39.9994337	-104.6651534	12.00	
8087.64	90.000	180.126	7342.00†	1623.26	-1092.74	-2440.25	3233882.54	1243674.59	39.9992500	-104.6651600	12.00	LANDING
8120.50†	90.000	180.126	7342.00	1655.26	-1125.60	-2440.32	3233882.78	1243641.74	39.9991598	-104.6651602	0.00	
8220.50†	90.000	180.126	7342.00	1752.64	-1225.60	-2440.54	3233883.51	1243541.74	39.9988853	-104.6651610	0.00	
8320.50†	90.000	180.126	7342.00	1850.02	-1325.60	-2440.76	3233884.24	1243441.75	39.9986108	-104.6651617	0.00	
8420.50†	90.000	180.126	7342.00	1947.41	-1425.60	-2440.98	3233884.98	1243341.76	39.9983363	-104.6651625	0.00	

Planned Wellpath Report

Desha 4-5-2L PWP Rev-A.0

Page 4 of 7

REFERENCE WELLPATH IDENTIFICATION

Operator	CONFLUENCE RESOURCES	Well	Desha 4-5-2L
Field	WELD COUNTY (NAD83, TRUE NORTH)	API/Legal	
Facility	SEC.34-T01N-R65W	Wellbore	Desha 4-5-2L PWB
Slot	SLOT#15 Desha 4-5-2L (620'FSL & 868'FWL,SEC.34)		

WELLPATH DATA (181 stations) † = interpolated, ‡ = extrapolated station

MD [ft]	Inclination [°]	Azimuth [°]	TVD [ft]	Vert Sect [ft]	North [ft]	East [ft]	Grid East [US ft]	Grid North [US ft]	Latitude	Longitude	DLS [°/100ft]	Comments
8520.50†	90.000	180.126	7342.00	2044.79	-1525.60	-2441.20	3233885.71	1243241.76	39.9980618	-104.6651632	0.00	
8620.50†	90.000	180.126	7342.00	2142.18	-1625.60	-2441.42	3233886.44	1243141.77	39.9977873	-104.6651640	0.00	
8720.50†	90.000	180.126	7342.00	2239.56	-1725.59	-2441.64	3233887.17	1243041.77	39.9975128	-104.6651647	0.00	
8820.50†	90.000	180.126	7342.00	2336.95	-1825.59	-2441.86	3233887.90	1242941.78	39.9972383	-104.6651655	0.00	
8920.50†	90.000	180.126	7342.00	2434.33	-1925.59	-2442.08	3233888.63	1242841.79	39.9969637	-104.6651662	0.00	
9020.50†	90.000	180.126	7342.00	2531.72	-2025.59	-2442.30	3233889.37	1242741.79	39.9966892	-104.6651670	0.00	
9120.50†	90.000	180.126	7342.00	2629.10	-2125.59	-2442.52	3233890.10	1242641.80	39.9964147	-104.6651677	0.00	
9220.50†	90.000	180.126	7342.00	2726.49	-2225.59	-2442.74	3233890.83	1242541.81	39.9961402	-104.6651685	0.00	
9320.50†	90.000	180.126	7342.00	2823.87	-2325.59	-2442.96	3233891.56	1242441.81	39.9958657	-104.6651692	0.00	
9420.50†	90.000	180.126	7342.00	2921.26	-2425.59	-2443.18	3233892.29	1242341.82	39.9955912	-104.6651700	0.00	
9520.50†	90.000	180.126	7342.00	3018.64	-2525.59	-2443.40	3233893.02	1242241.82	39.9953167	-104.6651707	0.00	
9620.50†	90.000	180.126	7342.00	3116.03	-2625.59	-2443.62	3233893.76	1242141.83	39.9950422	-104.6651715	0.00	
9720.50†	90.000	180.126	7342.00	3213.41	-2725.59	-2443.84	3233894.49	1242041.84	39.9947677	-104.6651722	0.00	
9820.50†	90.000	180.126	7342.00	3310.80	-2825.59	-2444.06	3233895.22	1241941.84	39.9944932	-104.6651730	0.00	
9920.50†	90.000	180.126	7342.00	3408.18	-2925.59	-2444.28	3233895.95	1241841.85	39.9942187	-104.6651737	0.00	
10020.50†	90.000	180.126	7342.00	3505.57	-3025.59	-2444.50	3233896.68	1241741.86	39.9939441	-104.6651745	0.00	
10120.50†	90.000	180.126	7342.00	3602.95	-3125.59	-2444.72	3233897.41	1241641.86	39.9936696	-104.6651752	0.00	
10220.50†	90.000	180.126	7342.00	3700.34	-3225.59	-2444.94	3233898.15	1241541.87	39.9933951	-104.6651760	0.00	
10320.50†	90.000	180.126	7342.00	3797.72	-3325.59	-2445.16	3233898.88	1241441.87	39.9931206	-104.6651767	0.00	
10420.50†	90.000	180.126	7342.00	3895.11	-3425.59	-2445.38	3233899.61	1241341.88	39.9928461	-104.6651775	0.00	
10520.50†	90.000	180.126	7342.00	3992.49	-3525.59	-2445.60	3233900.34	1241241.89	39.9925716	-104.6651782	0.00	
10620.50†	90.000	180.126	7342.00	4089.88	-3625.59	-2445.81	3233901.07	1241141.89	39.9922971	-104.6651790	0.00	
10720.50†	90.000	180.126	7342.00	4187.26	-3725.59	-2446.03	3233901.80	1241041.90	39.9920226	-104.6651797	0.00	
10820.50†	90.000	180.126	7342.00	4284.65	-3825.59	-2446.25	3233902.53	1240941.91	39.9917481	-104.6651805	0.00	
10920.50†	90.000	180.126	7342.00	4382.03	-3925.59	-2446.47	3233903.27	1240841.91	39.9914736	-104.6651812	0.00	
11020.50†	90.000	180.126	7342.00	4479.41	-4025.59	-2446.69	3233904.00	1240741.92	39.9911991	-104.6651820	0.00	
11120.50†	90.000	180.126	7342.00	4576.80	-4125.59	-2446.91	3233904.73	1240641.92	39.9909246	-104.6651827	0.00	
11220.50†	90.000	180.126	7342.00	4674.18	-4225.59	-2447.13	3233905.46	1240541.93	39.9906500	-104.6651835	0.00	
11320.50†	90.000	180.126	7342.00	4771.57	-4325.59	-2447.35	3233906.19	1240441.94	39.9903755	-104.6651842	0.00	
11420.50†	90.000	180.126	7342.00	4868.95	-4425.59	-2447.57	3233906.92	1240341.94	39.9901010	-104.6651850	0.00	
11520.50†	90.000	180.126	7342.00	4966.34	-4525.59	-2447.79	3233907.66	1240241.95	39.9898265	-104.6651857	0.00	
11620.50†	90.000	180.126	7342.00	5063.72	-4625.59	-2448.01	3233908.39	1240141.96	39.9895520	-104.6651865	0.00	
11720.50†	90.000	180.126	7342.00	5161.11	-4725.59	-2448.23	3233909.12	1240041.96	39.9892775	-104.6651872	0.00	
11820.50†	90.000	180.126	7342.00	5258.49	-4825.59	-2448.45	3233909.85	1239941.97	39.9890030	-104.6651879	0.00	
11920.50†	90.000	180.126	7342.00	5355.88	-4925.59	-2448.67	3233910.58	1239841.97	39.9887285	-104.6651887	0.00	
12020.50†	90.000	180.126	7342.00	5453.26	-5025.59	-2448.89	3233911.31	1239741.98	39.9884540	-104.6651894	0.00	
12120.50†	90.000	180.126	7342.00	5550.65	-5125.59	-2449.11	3233912.05	1239641.99	39.9881795	-104.6651902	0.00	
12220.50†	90.000	180.126	7342.00	5648.03	-5225.59	-2449.33	3233912.78	1239541.99	39.9879050	-104.6651909	0.00	
12320.50†	90.000	180.126	7342.00	5745.42	-5325.59	-2449.55	3233913.51	1239442.00	39.9876305	-104.6651917	0.00	
12420.50†	90.000	180.126	7342.00	5842.80	-5425.59	-2449.77	3233914.24	1239342.01	39.9873559	-104.6651924	0.00	
12520.50†	90.000	180.126	7342.00	5940.19	-5525.59	-2449.99	3233914.97	1239242.01	39.9870814	-104.6651932	0.00	
12620.50†	90.000	180.126	7342.00	6037.57	-5625.59	-2450.21	3233915.70	1239142.02	39.9868069	-104.6651939	0.00	
12720.50†	90.000	180.126	7342.00	6134.96	-5725.59	-2450.43	3233916.44	1239042.02	39.9865324	-104.6651947	0.00	
12820.50†	90.000	180.126	7342.00	6232.34	-5825.58	-2450.65	3233917.17	1238942.03	39.9862579	-104.6651954	0.00	
12920.50†	90.000	180.126	7342.00	6329.73	-5925.58	-2450.87	3233917.90	1238842.04	39.9859834	-104.6651962	0.00	

Planned Wellpath Report

Desha 4-5-2L PWP Rev-A.0

Page 5 of 7

REFERENCE WELLPATH IDENTIFICATION

Operator	CONFLUENCE RESOURCES	Well	Desha 4-5-2L
Field	WELD COUNTY (NAD83, TRUE NORTH)	API/Legal	
Facility	SEC.34-T01N-R65W	Wellbore	Desha 4-5-2L PWB
Slot	SLOT#15 Desha 4-5-2L (620'FSL & 868'FWL,SEC.34)		

WELLPATH DATA (181 stations) † = interpolated, ‡ = extrapolated station

MD [ft]	Inclination [°]	Azimuth [°]	TVD [ft]	Vert Sect [ft]	North [ft]	East [ft]	Grid East [US ft]	Grid North [US ft]	Latitude	Longitude	DLS [°/100ft]	Comments
13020.50†	90.000	180.126	7342.00	6427.11	-6025.58	-2451.09	3233918.63	1238742.04	39.9857089	-104.6651969	0.00	
13120.50†	90.000	180.126	7342.00	6524.50	-6125.58	-2451.31	3233919.36	1238642.05	39.9854344	-104.6651977	0.00	
13220.50†	90.000	180.126	7342.00	6621.88	-6225.58	-2451.52	3233920.09	1238542.06	39.9851599	-104.6651984	0.00	
13320.50†	90.000	180.126	7342.00	6719.27	-6325.58	-2451.74	3233920.83	1238442.06	39.9848854	-104.6651992	0.00	
13420.50†	90.000	180.126	7342.00	6816.65	-6425.58	-2451.96	3233921.56	1238342.07	39.9846109	-104.6651999	0.00	
13520.50†	90.000	180.126	7342.00	6914.03	-6525.58	-2452.18	3233922.29	1238242.07	39.9843363	-104.6652007	0.00	
13620.50†	90.000	180.126	7342.00	7011.42	-6625.58	-2452.40	3233923.02	1238142.08	39.9840618	-104.6652014	0.00	
13720.50†	90.000	180.126	7342.00	7108.80	-6725.58	-2452.62	3233923.75	1238042.09	39.9837873	-104.6652022	0.00	
13820.50†	90.000	180.126	7342.00	7206.19	-6825.58	-2452.84	3233924.48	1237942.09	39.9835128	-104.6652029	0.00	
13920.50†	90.000	180.126	7342.00	7303.57	-6925.58	-2453.06	3233925.22	1237842.10	39.9832383	-104.6652037	0.00	
14020.50†	90.000	180.126	7342.00	7400.96	-7025.58	-2453.28	3233925.95	1237742.11	39.9829638	-104.6652044	0.00	
14120.50†	90.000	180.126	7342.00	7498.34	-7125.58	-2453.50	3233926.68	1237642.11	39.9826893	-104.6652052	0.00	
14220.50†	90.000	180.126	7342.00	7595.73	-7225.58	-2453.72	3233927.41	1237542.12	39.9824148	-104.6652059	0.00	
14320.50†	90.000	180.126	7342.00	7693.11	-7325.58	-2453.94	3233928.14	1237442.12	39.9821403	-104.6652067	0.00	
14420.50†	90.000	180.126	7342.00	7790.50	-7425.58	-2454.16	3233928.87	1237342.13	39.9818658	-104.6652074	0.00	
14520.50†	90.000	180.126	7342.00	7887.88	-7525.58	-2454.38	3233929.61	1237242.14	39.9815913	-104.6652082	0.00	
14620.50†	90.000	180.126	7342.00	7985.27	-7625.58	-2454.60	3233930.34	1237142.14	39.9813168	-104.6652089	0.00	
14720.50†	90.000	180.126	7342.00	8082.65	-7725.58	-2454.82	3233931.07	1237042.15	39.9810422	-104.6652097	0.00	
14820.50†	90.000	180.126	7342.00	8180.04	-7825.58	-2455.04	3233931.80	1236942.16	39.9807677	-104.6652104	0.00	
14920.50†	90.000	180.126	7342.00	8277.42	-7925.58	-2455.26	3233932.53	1236842.16	39.9804932	-104.6652112	0.00	
15020.50†	90.000	180.126	7342.00	8374.81	-8025.58	-2455.48	3233933.26	1236742.17	39.9802187	-104.6652119	0.00	
15120.50†	90.000	180.126	7342.00	8472.19	-8125.58	-2455.70	3233933.99	1236642.17	39.9799442	-104.6652127	0.00	
15220.50†	90.000	180.126	7342.00	8569.58	-8225.58	-2455.92	3233934.73	1236542.18	39.9796697	-104.6652134	0.00	
15320.50†	90.000	180.126	7342.00	8666.96	-8325.58	-2456.14	3233935.46	1236442.19	39.9793952	-104.6652141	0.00	
15420.50†	90.000	180.126	7342.00	8764.35	-8425.58	-2456.36	3233936.19	1236342.19	39.9791207	-104.6652149	0.00	
15520.50†	90.000	180.126	7342.00	8861.73	-8525.58	-2456.58	3233936.92	1236242.20	39.9788462	-104.6652156	0.00	
15620.50†	90.000	180.126	7342.00	8959.12	-8625.58	-2456.80	3233937.65	1236142.21	39.9785717	-104.6652164	0.00	
15720.50†	90.000	180.126	7342.00	9056.50	-8725.58	-2457.02	3233938.38	1236042.21	39.9782972	-104.6652171	0.00	
15820.50†	90.000	180.126	7342.00	9153.89	-8825.58	-2457.24	3233939.12	1235942.22	39.9780226	-104.6652179	0.00	
15920.50†	90.000	180.126	7342.00	9251.27	-8925.58	-2457.45	3233939.85	1235842.22	39.9777481	-104.6652186	0.00	
16020.50†	90.000	180.126	7342.00	9348.66	-9025.58	-2457.67	3233940.58	1235742.23	39.9774736	-104.6652194	0.00	
16120.50†	90.000	180.126	7342.00	9446.04	-9125.58	-2457.89	3233941.31	1235642.24	39.9771991	-104.6652201	0.00	
16220.50†	90.000	180.126	7342.00	9543.42	-9225.58	-2458.11	3233942.04	1235542.24	39.9769246	-104.6652209	0.00	
16320.50†	90.000	180.126	7342.00	9640.81	-9325.58	-2458.33	3233942.77	1235442.25	39.9766501	-104.6652216	0.00	
16420.50†	90.000	180.126	7342.00	9738.19	-9425.58	-2458.55	3233943.51	1235342.26	39.9763756	-104.6652224	0.00	
16520.50†	90.000	180.126	7342.00	9835.58	-9525.58	-2458.77	3233944.24	1235242.26	39.9761011	-104.6652231	0.00	
16620.50†	90.000	180.126	7342.00	9932.96	-9625.58	-2458.99	3233944.97	1235142.27	39.9758266	-104.6652239	0.00	
16720.50†	90.000	180.126	7342.00	10030.35	-9725.58	-2459.21	3233945.70	1235042.27	39.9755521	-104.6652246	0.00	
16820.50†	90.000	180.126	7342.00	10127.73	-9825.58	-2459.43	3233946.43	1234942.28	39.9752776	-104.6652254	0.00	
16920.50†	90.000	180.126	7342.00	10225.12	-9925.58	-2459.65	3233947.16	1234842.29	39.9750030	-104.6652261	0.00	
17020.50†	90.000	180.126	7342.00	10322.50	-10025.57	-2459.87	3233947.90	1234742.29	39.9747285	-104.6652269	0.00	
17120.50†	90.000	180.126	7342.00	10419.89	-10125.57	-2460.09	3233948.63	1234642.30	39.9744540	-104.6652276	0.00	
17220.50†	90.000	180.126	7342.00	10517.27	-10225.57	-2460.31	3233949.36	1234542.31	39.9741795	-104.6652284	0.00	
17320.50†	90.000	180.126	7342.00	10614.66	-10325.57	-2460.53	3233950.09	1234442.31	39.9739050	-104.6652291	0.00	
17420.50†	90.000	180.126	7342.00	10712.04	-10425.57	-2460.75	3233950.82	1234342.32	39.9736305	-104.6652299	0.00	

REFERENCE WELLPATH IDENTIFICATION

Operator	CONFLUENCE RESOURCES	Well	Desha 4-5-2L
Field	WELD COUNTY (NAD83, TRUE NORTH)	API/Legal	
Facility	SEC.34-T01N-R65W	Wellbore	Desha 4-5-2L PWB
Slot	SLOT#15 Desha 4-5-2L (620'FSL & 868'FWL,SEC.34)		

WELLPATH DATA (181 stations)

MD [ft]	Inclination [°]	Azimuth [°]	TVD [ft]	Vert Sect [ft]	North [ft]	East [ft]	Grid East [US ft]	Grid North [US ft]	Latitude	Longitude	DLS [°/100ft]	Comments
17438.90	90.000	180.126	7342.00 ²	10729.96	-10443.97	-2460.79	3233950.96	1234323.92	39.9735800	-104.6652300	0.00	TD

HOLE & CASING SECTIONS - Ref Wellbore: Desha 4-5-2L PWB Ref Wellpath: Desha 4-5-2L PWP Rev-A.0

String/Diameter	Start MD [ft]	End MD [ft]	Interval [ft]	Start TVD [ft]	End TVD [ft]	Start N/S [ft]	Start E/W [ft]	End N/S [ft]	End E/W [ft]
9.625in Casing Surface	20.50	1521.51	1501.01	20.50	1500.00	0.00	0.00	-47.07	-173.94

TARGETS

Name	MD [ft]	TVD [ft]	North [ft]	East [ft]	Grid East [US ft]	Grid North [US ft]	Latitude	Longitude	Shape
SEC.04-T01S-R65W	N/A	62.00	62.58	-5701.13	3230610.94	1244798.80	40.0024200	-104.6768000	polygon
2D Polygon: dimensions not calculated									
SEC.04/09-T01S-R65W 470' SETBACK	N/A	62.00	62.58	-5701.13	3230610.94	1244798.80	40.0024200	-104.6768000	polygon
2D Polygon: dimensions not calculated									
SEC.09-T01S-R65W	N/A	62.00	62.58	-5701.13	3230610.94	1244798.80	40.0024200	-104.6768000	polygon
2D Polygon: dimensions not calculated									
2) Desha 4-5-2L BHL REV-1 (470'FSL & 1595'FEL,SEC.09)	17438.90	7342.00	-10443.97	-2460.79	3233950.96	1234323.92	39.9735800	-104.6652300	point
1) Desha 4-5-2L LP REV-1 (470'FNL & 1595'FEL,SEC.04)	8087.64	7342.00	-1092.74	-2440.25	3233882.54	1243674.59	39.9992500	-104.6651600	point

SURVEY PROGRAM - Ref Wellbore: Desha 4-5-2L PWB Ref Wellpath: Desha 4-5-2L PWP Rev-A.0

Start MD [ft]	End MD [ft]	Positional Uncertainty Model	Log Name/Comment	Wellbore
20.50	1521.51	BH NaviTrak (2019) (Axial)		Desha 4-5-2L PWB
1521.51	17529.50	BH AutoTrak Curve/eXpress (2019) (Short spacing)		Desha 4-5-2L PWB

Planned Wellpath Report

Desha 4-5-2L PWP Rev-A.0

Page 7 of 7

REFERENCE WELLPATH IDENTIFICATION

Operator	CONFLUENCE RESOURCES	Well	Desha 4-5-2L
Field	WELD COUNTY (NAD83, TRUE NORTH)	API/Legal	
Facility	SEC.34-T01N-R65W	Wellbore	Desha 4-5-2L PWB
Slot	SLOT#15 Desha 4-5-2L (620'FSL & 868'FWL,SEC.34)		

DESIGN COMMENTS

MD [ft]	Inclination [°]	Azimuth [°]	TVD [ft]	Comment
20.50	0.000	254.858	20.50	Tie On
500.00	0.000	254.858	500.00	End of Tangent
1594.73	21.895	254.858	1568.28	Build (XS)
7384.60	21.895	254.858	6940.54	KOP
8087.64	90.000	180.126	7342.00	LANDING
17438.90	90.000	180.126	7342.00	TD