

CONFLUENCE RESOURCES

Location:	COLORADO	Slot:	SLOT#14 Desha 4-2-4L (620'FSL & 843'FWL, SEC.34)
Field:	WELD COUNTY (NAD83, TRUE NORTH)	Well:	Desha 4-2-4L
Facility:	SEC.34-T01N-R65W	Wellbore:	Desha 4-2-4L PWB
Plot reference wellpath is Desha 4-2-4L PWP Rev A.0		Grid System: NAD83 / Lambert Colorado SP, Northern Zone (501), US feet	
True vertical depths are referenced to Rig (20.5) (RT)		North Reference: True north	
Reference wellpath measured depths are referenced to Rig (20.5) (RT)		Scale: True distance	
Rig (20.5) to Mean Sea Level: 5160.5 feet		Coordinates are in feet referenced to Slot	
Mean Sea Level to Mud line (At Slot: SLOT#14 Desha 4-2-4L (620'FSL & 843'FWL, SEC.34)): 0 feet		Depths are in feet	
Offset wellpath MDs are referenced to each path's default MD datum		Created by: painstr on 2020-10-07, Database: WA_Denver	

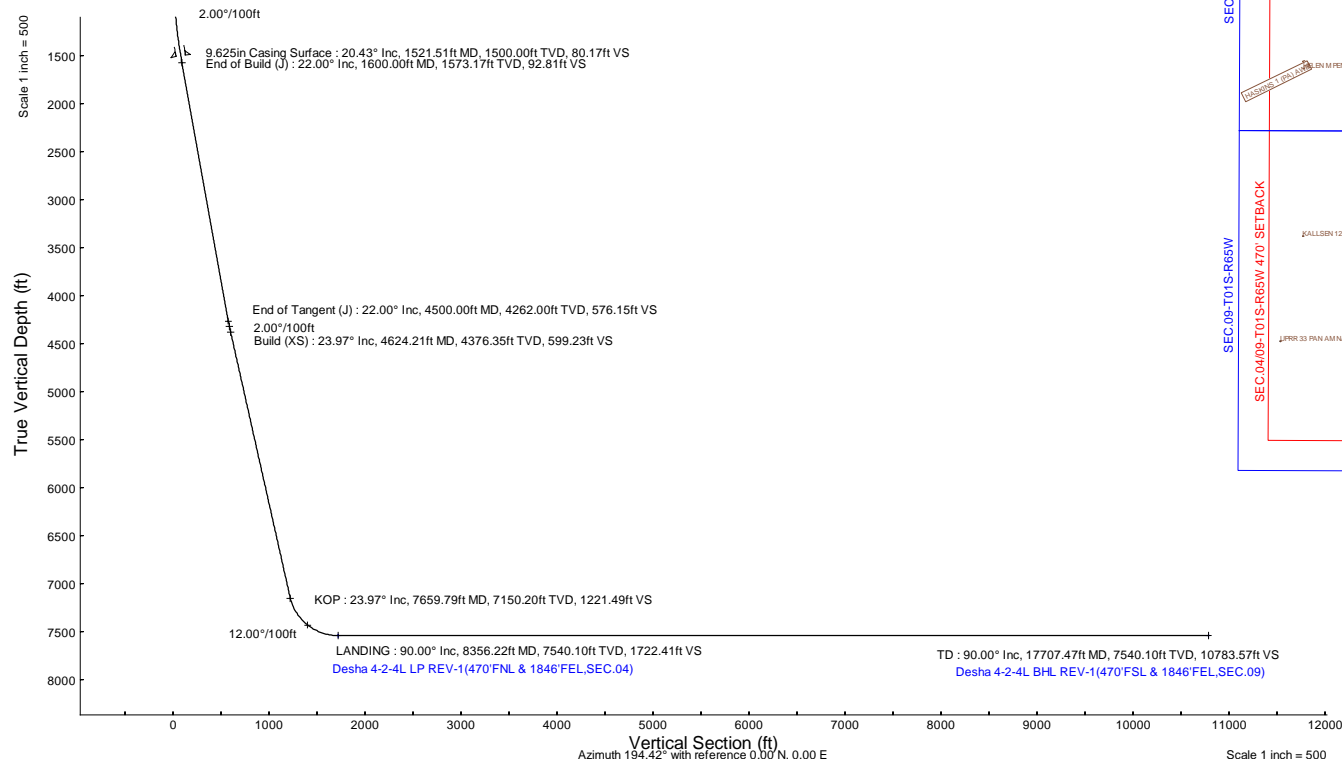
Location Information					
Facility Name		Grid East (US ft)	Grid North (US ft)	Latitude	Longitude
SEC.34-T01N-R65W		3236186.141	1244789.256	40°00'8.1000"N	104°39'24.8400"W
Slot		Grid East (US ft)	Grid North (US ft)	Latitude	Longitude
SLOT#14 Desha 4-2-4L (620'FSL & 843'FWL, SEC.34)		3236286.988	1244790.215	40°00'8.1000"N	104°39'23.5440"W
Rig (20.5) (RT) to Mud line (At Slot: SLOT#14 Desha 4-2-4L (620'FSL & 843'FWL, SEC.34))		0.00		5160.5R	
Mean Sea Level to Mud line (At Slot: SLOT#14 Desha 4-2-4L (620'FSL & 843'FWL, SEC.34))		100.86		0R	
Rig (20.5) (RT) to Mean Sea Level				5160.5R	

Survey Program					
Start MD (ft)	End MD (ft)	Tool	Model	Log Name/Comment	Wellbore
20.50	1521.51	BH NavitTrak (2019)	BH NavitTrak (2019) (Axial)		Desha 4-2-4L PWB
1521.51	17805.48	BH AutoTrak Curve/xpress (2019)	BH AutoTrak Curve/xpress (2019) (Short spacing)		Desha 4-2-4L PWB

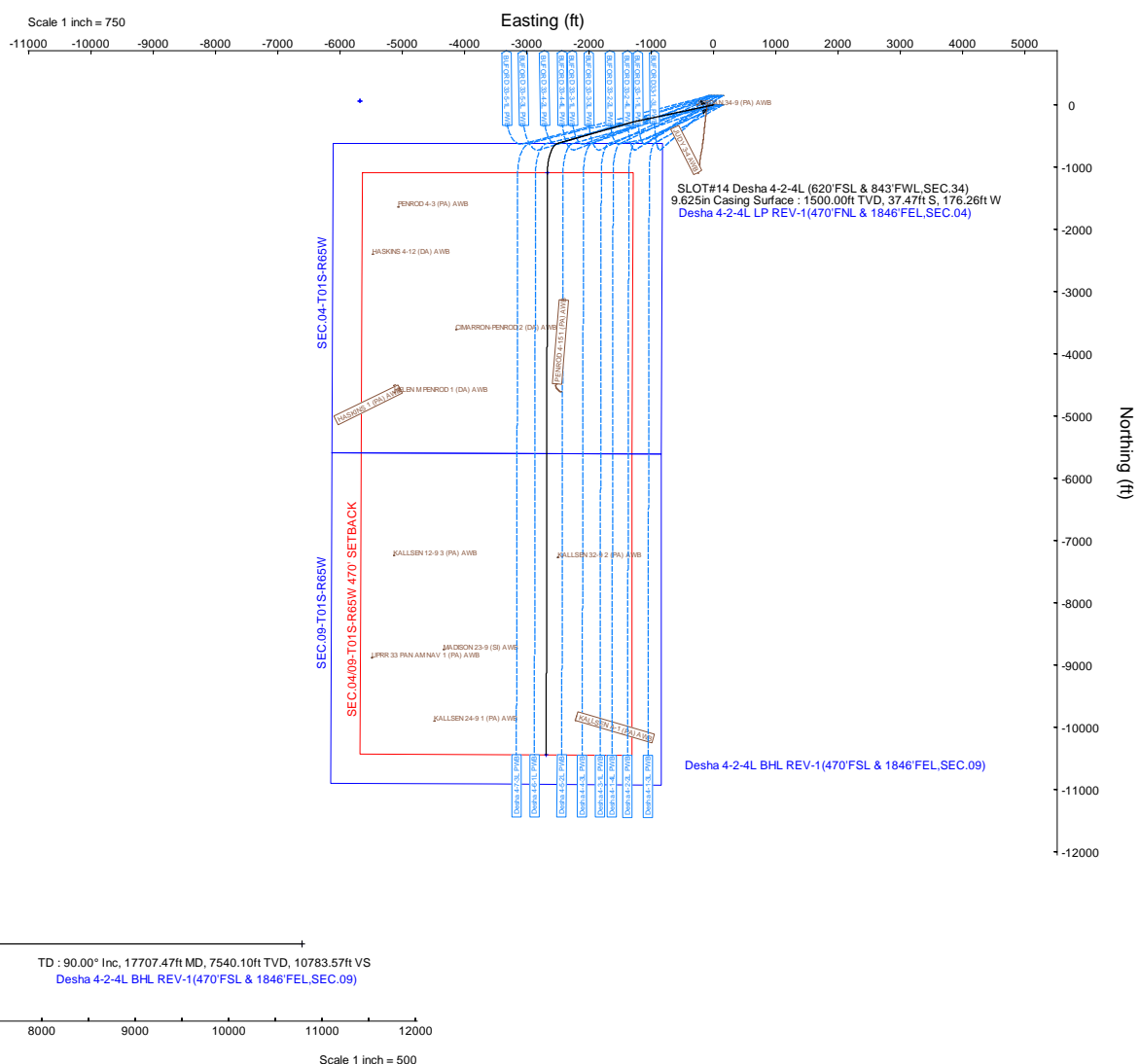
Hole and Casing Sections									
Name	Start MD (ft)	End MD (ft)	Interval (ft)	Start TVD (ft)	End TVD (ft)	Start Local N (ft)	Start Local E (ft)	End Local N (ft)	End Local E (ft)
9.625in Casing Surface	20.50	1521.51	1501.01	20.50	1500.00	0.00	0.00	-37.47	-176.26
Desha 4-2-4L PWB									

Bottom Hole Location									
MD (ft)	Inc (°)	Az (°)	TVD (ft)	Local N (ft)	Local E (ft)	Grid East (US ft)	Grid North (US ft)	Latitude	Longitude
17707.47	90.000	180.109	7540.10	-10443.95	-2685.01	3233701.53	1234321.57	39°58'24.8880"N	104°39'58.0320"W

Targets									
Name	MD (ft)	TVD (ft)	Local N (ft)	Local E (ft)	Grid East (US ft)	Grid North (US ft)	Latitude	Longitude	
SEC.04-T01S-R65W	N/A	62.00	62.58	-5675.91	3230610.84	1244798.80	40°00'8.7120"N	104°40'36.4800"W	
SEC.0409-T01S-R65W 470' SETBACK	N/A	62.00	62.58	-5675.91	3230610.84	1244798.80	40°00'8.7120"N	104°40'36.4800"W	
SEC.09-T01S-R65W	N/A	62.00	62.58	-5675.91	3230610.84	1244798.80	40°00'8.7120"N	104°40'36.4800"W	
Desha 4-2-4L BHL REV-1(470'FSL & 1846'FEL, SEC.09)	17707.47	7540.10	-10443.95	-2685.01	3233701.53	1234321.57	39°58'24.8880"N	104°39'58.0320"W	
Desha 4-2-4L LP REV-1(470'FSL & 1846'FEL, SEC.04)	8356.22	7540.10	-1092.72	-2667.19	3233630.41	1243672.22	39°59'57.3000"N	104°39'57.8160"W	



Well Profile Data								
Design Comment	MD (ft)	Inc (°)	Az (°)	TVD (ft)	Local N (ft)	Local E (ft)	DLS (°/100ft)	VS (ft)
Tie On	20.50	0.000	258.000	20.50	0.00	0.00	0.00	0.00
End of Tangent	500.00	0.000	258.000	500.00	0.00	0.00	0.00	0.00
End of Build (J)	1600.00	22.000	258.000	1573.17	-43.37	-204.04	2.00	92.81
End of Tangent (J)	4500.00	22.000	258.000	4262.00	-269.24	-1266.66	0.00	576.15
Build (XS)	4624.21	23.967	254.111	4376.35	-280.98	-1313.69	2.00	599.23
KOP	7659.79	23.967	254.111	7150.20	-618.57	-2499.67	0.00	1221.49
LANDING	8356.22	90.000	180.109	7540.10	-1092.72	-2667.19	12.00	1722.41
TD	17707.47	90.000	180.109	7540.10	-10443.95	-2685.01	0.00	10783.57





Planned Wellpath Report

Desha 4-2-4L PWP Rev-A.0

Page 1 of 7



REFERENCE WELLPATH IDENTIFICATION

Operator	CONFLUENCE RESOURCES	Well	Desha 4-2-4L
Field	WELD COUNTY (NAD83, TRUE NORTH)	API/Legal	
Facility	SEC.34-T01N-R65W	Wellbore	Desha 4-2-4L PWB
Slot	SLOT#14 Desha 4-2-4L (620'FSL & 843'FWL,SEC.34)		

REPORT SETUP INFORMATION

Projection System	NAD83 / Lambert Colorado SP, Northern Zone (501), US feet	Software System	WellArchitect® 6.0
North Reference	True	User	Painsetr
Scale	0.999966	Report Generated	10/7/2020 at 1:15:23 PM
Convergence at slot	0.54° East	Database	WA_Denver

WELLPATH LOCATION

	Local coordinates		Grid coordinates		Geographic coordinates	
	North[ft]	East[ft]	Easting[US ft]	Northing[US ft]	Latitude	Longitude
Slot Location	0.00	100.86	3236286.99	1244790.22	40.0022500°	-104.6565400°
Facility Reference Pt			3236186.14	1244789.26	40.0022500°	-104.6569000°
Field Reference Pt			3230456.90	1245096.09	40.0032400°	-104.6773400°

WELLPATH DATUM

Calculation method	Minimum curvature	Rig (20.5') (RT) to Facility Vertical Datum	5160.50ft
Horizontal Reference Pt	Slot	Rig (20.5') (RT) to Mean Sea Level	5160.50ft
Vertical Reference Pt	Rig (20.5') (RT)	Rig (20.5') (RT) to Mud Line at Slot (SLOT#14 Desha 4-2-4L (620'FSL & 843'FWL,SEC.34))	5160.50ft
MD Reference Pt	Rig (20.5') (RT)	Section Origin	N 0.00, E 0.00 ft
Field Vertical Reference	Mean Sea Level	Section Azimuth	194.42°

Planned Wellpath Report

Desha 4-2-4L PWP Rev-A.0

Page 2 of 7

REFERENCE WELLPATH IDENTIFICATION

Operator	CONFLUENCE RESOURCES	Well	Desha 4-2-4L
Field	WELD COUNTY (NAD83, TRUE NORTH)	API/Legal	
Facility	SEC.34-T01N-R65W	Wellbore	Desha 4-2-4L PWB
Slot	SLOT#14 Desha 4-2-4L (620'FSL & 843'FWL,SEC.34)		

WELLPATH DATA (185 stations) † = interpolated, ‡ = extrapolated station

MD [ft]	Inclination [°]	Azimuth [°]	TVD [ft]	Vert Sect [ft]	North [ft]	East [ft]	Grid East [US ft]	Grid North [US ft]	Latitude	Longitude	DLS [°/100ft]	Comments
0.00†	0.000	258.000	0.00	0.00	0.00	0.00	3236286.99	1244790.22	40.0022500	-104.6565400	0.00	
20.50	0.000	258.000	20.50	0.00	0.00	0.00	3236286.99	1244790.22	40.0022500	-104.6565400	0.00	Tie On
120.50†	0.000	258.000	120.50	0.00	0.00	0.00	3236286.99	1244790.22	40.0022500	-104.6565400	0.00	
220.50†	0.000	258.000	220.50	0.00	0.00	0.00	3236286.99	1244790.22	40.0022500	-104.6565400	0.00	
320.50†	0.000	258.000	320.50	0.00	0.00	0.00	3236286.99	1244790.22	40.0022500	-104.6565400	0.00	
420.50†	0.000	258.000	420.50	0.00	0.00	0.00	3236286.99	1244790.22	40.0022500	-104.6565400	0.00	
500.00	0.000	258.000	500.00	0.00	0.00	0.00	3236286.99	1244790.22	40.0022500	-104.6565400	0.00	End of Tangent
520.50†	0.410	258.000	520.50	0.03	-0.02	-0.07	3236286.92	1244790.20	40.0022500	-104.6565403	2.00	
620.50†	2.410	258.000	620.46	1.13	-0.53	-2.48	3236284.52	1244789.66	40.0022486	-104.6565488	2.00	
720.50†	4.410	258.000	720.28	3.77	-1.76	-8.30	3236278.71	1244788.37	40.0022452	-104.6565696	2.00	
820.50†	6.410	258.000	819.83	7.97	-3.72	-17.52	3236269.51	1244786.33	40.0022398	-104.6566025	2.00	
920.50†	8.410	258.000	918.99	13.71	-6.40	-30.13	3236256.92	1244783.52	40.0022324	-104.6566476	2.00	
1020.50†	10.410	258.000	1017.64	20.98	-9.80	-46.12	3236240.96	1244779.97	40.0022231	-104.6567046	2.00	
1120.50†	12.410	258.000	1115.66	29.78	-13.92	-65.47	3236221.65	1244775.68	40.0022118	-104.6567737	2.00	
1220.50†	14.410	258.000	1212.93	40.10	-18.74	-88.16	3236199.02	1244770.64	40.0021986	-104.6568547	2.00	
1320.50†	16.410	258.000	1309.33	51.92	-24.26	-114.15	3236173.08	1244764.87	40.0021834	-104.6569474	2.00	
1420.50†	18.410	258.000	1404.74	65.23	-30.48	-143.41	3236143.88	1244758.37	40.0021663	-104.6570519	2.00	
1520.50†	20.410	258.000	1499.05	80.02	-37.39	-175.92	3236111.44	1244751.15	40.0021474	-104.6571679	2.00	
1600.00	22.000	258.000	1573.17	92.81	-43.37	-204.04	3236083.37	1244744.91	40.0021309	-104.6572683	2.00	End of Build (J)
1620.50†	22.000	258.000	1592.18	96.23	-44.97	-211.56	3236075.88	1244743.24	40.0021266	-104.6572951	0.00	
1720.50†	22.000	258.000	1684.89	112.89	-52.76	-248.20	3236039.31	1244735.10	40.0021052	-104.6574259	0.00	
1820.50†	22.000	258.000	1777.61	129.56	-60.54	-284.84	3236002.75	1244726.97	40.0020838	-104.6575567	0.00	
1920.50†	22.000	258.000	1870.33	146.23	-68.33	-321.48	3235966.18	1244718.83	40.0020624	-104.6576875	0.00	
2020.50†	22.000	258.000	1963.05	162.89	-76.12	-358.12	3235929.62	1244710.69	40.0020410	-104.6578183	0.00	
2120.50†	22.000	258.000	2055.77	179.56	-83.91	-394.77	3235893.05	1244702.56	40.0020197	-104.6579491	0.00	
2220.50†	22.000	258.000	2148.49	196.23	-91.70	-431.41	3235856.49	1244694.42	40.0019983	-104.6580799	0.00	
2320.50†	22.000	258.000	2241.20	212.89	-99.49	-468.05	3235819.92	1244686.28	40.0019769	-104.6582107	0.00	
2420.50†	22.000	258.000	2333.92	229.56	-107.28	-504.69	3235783.36	1244678.15	40.0019555	-104.6583415	0.00	
2520.50†	22.000	258.000	2426.64	246.23	-115.06	-541.33	3235746.79	1244670.01	40.0019341	-104.6584723	0.00	
2620.50†	22.000	258.000	2519.36	262.89	-122.85	-577.98	3235710.23	1244661.88	40.0019127	-104.6586031	0.00	
2720.50†	22.000	258.000	2612.08	279.56	-130.64	-614.62	3235673.66	1244653.74	40.0018914	-104.6587338	0.00	
2820.50†	22.000	258.000	2704.80	296.23	-138.43	-651.26	3235637.10	1244645.60	40.0018700	-104.6588646	0.00	
2920.50†	22.000	258.000	2797.52	312.89	-146.22	-687.90	3235600.53	1244637.47	40.0018486	-104.6589954	0.00	
3020.50†	22.000	258.000	2890.23	329.56	-154.01	-724.54	3235563.97	1244629.33	40.0018272	-104.6591262	0.00	
3120.50†	22.000	258.000	2982.95	346.23	-161.80	-761.19	3235527.40	1244621.19	40.0018058	-104.6592570	0.00	
3220.50†	22.000	258.000	3075.67	362.89	-169.58	-797.83	3235490.84	1244613.06	40.0017844	-104.6593878	0.00	
3320.50†	22.000	258.000	3168.39	379.56	-177.37	-834.47	3235454.27	1244604.92	40.0017631	-104.6595186	0.00	
3420.50†	22.000	258.000	3261.11	396.23	-185.16	-871.11	3235417.71	1244596.78	40.0017417	-104.6596494	0.00	
3520.50†	22.000	258.000	3353.83	412.90	-192.95	-907.76	3235381.14	1244588.65	40.0017203	-104.6597802	0.00	
3620.50†	22.000	258.000	3446.54	429.56	-200.74	-944.40	3235344.58	1244580.51	40.0016989	-104.6599110	0.00	
3720.50†	22.000	258.000	3539.26	446.23	-208.53	-981.04	3235308.01	1244572.37	40.0016775	-104.6600418	0.00	
3820.50†	22.000	258.000	3631.98	462.90	-216.31	-1017.68	3235271.45	1244564.24	40.0016561	-104.6601725	0.00	
3920.50†	22.000	258.000	3724.70	479.56	-224.10	-1054.32	3235234.88	1244556.10	40.0016348	-104.6603033	0.00	
4020.50†	22.000	258.000	3817.42	496.23	-231.89	-1090.97	3235198.32	1244547.97	40.0016134	-104.6604341	0.00	
4120.50†	22.000	258.000	3910.14	512.90	-239.68	-1127.61	3235161.75	1244539.83	40.0015920	-104.6605649	0.00	

Planned Wellpath Report

Desha 4-2-4L PWP Rev-A.0

Page 3 of 7

REFERENCE WELLPATH IDENTIFICATION

Operator	CONFLUENCE RESOURCES	Well	Desha 4-2-4L
Field	WELD COUNTY (NAD83, TRUE NORTH)	API/Legal	
Facility	SEC.34-T01N-R65W	Wellbore	Desha 4-2-4L PWB
Slot	SLOT#14 Desha 4-2-4L (620'FSL & 843'FWL,SEC.34)		

WELLPATH DATA (185 stations) † = interpolated, ‡ = extrapolated station

MD [ft]	Inclination [°]	Azimuth [°]	TVD [ft]	Vert Sect [ft]	North [ft]	East [ft]	Grid East [US ft]	Grid North [US ft]	Latitude	Longitude	DLS [°/100ft]	Comments
4220.50†	22.000	258.000	4002.85	529.56	-247.47	-1164.25	3235125.19	1244531.69	40.0015706	-104.6606957	0.00	
4320.50†	22.000	258.000	4095.57	546.23	-255.26	-1200.89	3235088.62	1244523.56	40.0015492	-104.6608265	0.00	
4420.50†	22.000	258.000	4188.29	562.90	-263.05	-1237.53	3235052.06	1244515.42	40.0015278	-104.6609573	0.00	
4500.00	22.000	258.000	4262.00	576.15	-269.24	-1266.66	3235022.99	1244508.95	40.0015108	-104.6610613	0.00	End of Tangent (J)
4520.50†	22.318	257.314	4280.99	579.63	-270.89	-1274.22	3235015.45	1244507.23	40.0015063	-104.6610882	2.00	
4620.50†	23.907	254.218	4372.96	598.47	-280.57	-1312.24	3234977.52	1244497.18	40.0014797	-104.6612239	2.00	
4624.21	23.967	254.111	4376.35	599.23	-280.98	-1313.69	3234976.08	1244496.76	40.0014786	-104.6612291	2.00	Build (XS)
4720.50†	23.967	254.111	4464.34	618.97	-291.69	-1351.31	3234938.56	1244485.69	40.0014492	-104.6613634	0.00	
4820.50†	23.967	254.111	4555.72	639.47	-302.81	-1390.38	3234899.60	1244474.20	40.0014186	-104.6615028	0.00	
4920.50†	23.967	254.111	4647.10	659.97	-313.93	-1429.45	3234860.64	1244462.71	40.0013881	-104.6616423	0.00	
5020.50†	23.967	254.111	4738.47	680.47	-325.06	-1468.52	3234821.68	1244451.22	40.0013576	-104.6617818	0.00	
5120.50†	23.967	254.111	4829.85	700.96	-336.18	-1507.59	3234782.72	1244439.73	40.0013270	-104.6619212	0.00	
5220.50†	23.967	254.111	4921.23	721.46	-347.30	-1546.66	3234743.76	1244428.24	40.0012965	-104.6620607	0.00	
5320.50†	23.967	254.111	5012.61	741.96	-358.42	-1585.73	3234704.80	1244416.74	40.0012660	-104.6622001	0.00	
5420.50†	23.967	254.111	5103.99	762.46	-369.54	-1624.80	3234665.84	1244405.25	40.0012354	-104.6623396	0.00	
5520.50†	23.967	254.111	5195.36	782.96	-380.66	-1663.87	3234626.88	1244393.76	40.0012049	-104.6624790	0.00	
5620.50†	23.967	254.111	5286.74	803.46	-391.78	-1702.93	3234587.92	1244382.27	40.0011744	-104.6626185	0.00	
5720.50†	23.967	254.111	5378.12	823.96	-402.90	-1742.00	3234548.96	1244370.78	40.0011438	-104.6627579	0.00	
5820.50†	23.967	254.111	5469.50	844.46	-414.02	-1781.07	3234510.00	1244359.28	40.0011133	-104.6628974	0.00	
5920.50†	23.967	254.111	5560.88	864.95	-425.15	-1820.14	3234471.04	1244347.79	40.0010828	-104.6630368	0.00	
6020.50†	23.967	254.111	5652.25	885.45	-436.27	-1859.21	3234432.08	1244336.30	40.0010522	-104.6631763	0.00	
6120.50†	23.967	254.111	5743.63	905.95	-447.39	-1898.28	3234393.12	1244324.81	40.0010217	-104.6633157	0.00	
6220.50†	23.967	254.111	5835.01	926.45	-458.51	-1937.35	3234354.16	1244313.32	40.0009911	-104.6634552	0.00	
6320.50†	23.967	254.111	5926.39	946.95	-469.63	-1976.42	3234315.20	1244301.83	40.0009606	-104.6635946	0.00	
6420.50†	23.967	254.111	6017.76	967.45	-480.75	-2015.49	3234276.24	1244290.33	40.0009301	-104.6637341	0.00	
6520.50†	23.967	254.111	6109.14	987.95	-491.87	-2054.56	3234237.28	1244278.84	40.0008995	-104.6638735	0.00	
6620.50†	23.967	254.111	6200.52	1008.45	-502.99	-2093.63	3234198.31	1244267.35	40.0008690	-104.6640130	0.00	
6720.50†	23.967	254.111	6291.90	1028.94	-514.11	-2132.70	3234159.35	1244255.86	40.0008385	-104.6641524	0.00	
6820.50†	23.967	254.111	6383.28	1049.44	-525.24	-2171.77	3234120.39	1244244.37	40.0008079	-104.6642919	0.00	
6920.50†	23.967	254.111	6474.65	1069.94	-536.36	-2210.83	3234081.43	1244232.87	40.0007774	-104.6644313	0.00	
7020.50†	23.967	254.111	6566.03	1090.44	-547.48	-2249.90	3234042.47	1244221.38	40.0007468	-104.6645708	0.00	
7120.50†	23.967	254.111	6657.41	1110.94	-558.60	-2288.97	3234003.51	1244209.89	40.0007163	-104.6647102	0.00	
7220.50†	23.967	254.111	6748.79	1131.44	-569.72	-2328.04	3233964.55	1244198.40	40.0006858	-104.6648497	0.00	
7320.50†	23.967	254.111	6840.17	1151.94	-580.84	-2367.11	3233925.59	1244186.91	40.0006552	-104.6649891	0.00	
7420.50†	23.967	254.111	6931.54	1172.43	-591.96	-2406.18	3233886.63	1244175.42	40.0006247	-104.6651286	0.00	
7520.50†	23.967	254.111	7022.92	1192.93	-603.08	-2445.25	3233847.67	1244163.92	40.0005942	-104.6652680	0.00	
7620.50†	23.967	254.111	7114.30	1213.43	-614.20	-2484.32	3233808.71	1244152.43	40.0005636	-104.6654075	0.00	
7659.79	23.967	254.111	7150.20	1221.49	-618.57	-2499.67	3233793.41	1244147.92	40.0005516	-104.6654622	0.00	KOP
7720.50†	26.703	238.268	7205.13	1237.57	-629.14	-2523.16	3233770.01	1244137.13	40.0005226	-104.6655461	12.00	
7820.50†	34.055	219.323	7291.54	1279.32	-662.74	-2560.15	3233733.35	1244103.18	40.0004304	-104.6656781	12.00	
7920.50†	43.328	207.047	7369.62	1338.41	-715.15	-2593.62	3233700.38	1244050.46	40.0002865	-104.6657975	12.00	
8020.50†	53.516	198.531	7435.97	1412.26	-784.07	-2622.10	3233672.56	1243981.27	40.0000973	-104.6658992	12.00	
8120.50†	64.166	192.049	7487.67	1497.63	-866.50	-2644.35	3233651.09	1243898.63	39.9998710	-104.6659786	12.00	
8220.50†	75.056	186.658	7522.48	1590.80	-958.83	-2659.40	3233636.92	1243806.16	39.9996175	-104.6660323	12.00	
8320.50†	86.059	181.796	7538.87	1687.70	-1057.03	-2666.59	3233630.66	1243707.90	39.9993480	-104.6660579	12.00	

Planned Wellpath Report

Desha 4-2-4L PWP Rev-A.0

Page 4 of 7

REFERENCE WELLPATH IDENTIFICATION

Operator	CONFLUENCE RESOURCES	Well	Desha 4-2-4L
Field	WELD COUNTY (NAD83, TRUE NORTH)	API/Legal	
Facility	SEC.34-T01N-R65W	Wellbore	Desha 4-2-4L PWB
Slot	SLOT#14 Desha 4-2-4L (620'FSL & 843'FWL,SEC.34)		

WELLPATH DATA (185 stations) † = interpolated, ‡ = extrapolated station

MD [ft]	Inclination [°]	Azimuth [°]	TVD [ft]	Vert Sect [ft]	North [ft]	East [ft]	Grid East [US ft]	Grid North [US ft]	Latitude	Longitude	DLS [°/100ft]	Comments
8356.22	90.000	180.109	7540.10 [†]	1722.41	-1092.72	-2667.19	3233630.41	1243672.22	39.9992500	-104.6660600	12.00	LANDING
8420.50†	90.000	180.109	7540.10	1784.70	-1157.00	-2667.31	3233630.90	1243607.94	39.9990735	-104.6660604	0.00	
8520.50†	90.000	180.109	7540.10	1881.59	-1257.00	-2667.50	3233631.66	1243507.95	39.9987990	-104.6660611	0.00	
8620.50†	90.000	180.109	7540.10	1978.49	-1357.00	-2667.69	3233632.42	1243407.95	39.9985245	-104.6660617	0.00	
8720.50†	90.000	180.109	7540.10	2075.39	-1457.00	-2667.88	3233633.18	1243307.96	39.9982500	-104.6660623	0.00	
8820.50†	90.000	180.109	7540.10	2172.29	-1557.00	-2668.07	3233633.94	1243207.97	39.9979755	-104.6660630	0.00	
8920.50†	90.000	180.109	7540.10	2269.18	-1657.00	-2668.26	3233634.70	1243107.97	39.9977010	-104.6660636	0.00	
9020.50†	90.000	180.109	7540.10	2366.08	-1757.00	-2668.45	3233635.46	1243007.98	39.9974265	-104.6660643	0.00	
9120.50†	90.000	180.109	7540.10	2462.98	-1857.00	-2668.64	3233636.22	1242907.99	39.9971520	-104.6660649	0.00	
9220.50†	90.000	180.109	7540.10	2559.88	-1957.00	-2668.83	3233636.98	1242807.99	39.9968775	-104.6660655	0.00	
9320.50†	90.000	180.109	7540.10	2656.78	-2057.00	-2669.02	3233637.74	1242708.00	39.9966030	-104.6660662	0.00	
9420.50†	90.000	180.109	7540.10	2753.67	-2157.00	-2669.22	3233638.51	1242608.01	39.9963285	-104.6660668	0.00	
9520.50†	90.000	180.109	7540.10	2850.57	-2257.00	-2669.41	3233639.27	1242508.01	39.9960539	-104.6660675	0.00	
9620.50†	90.000	180.109	7540.10	2947.47	-2357.00	-2669.60	3233640.03	1242408.02	39.9957794	-104.6660681	0.00	
9720.50†	90.000	180.109	7540.10	3044.37	-2457.00	-2669.79	3233640.79	1242308.02	39.9955049	-104.6660688	0.00	
9820.50†	90.000	180.109	7540.10	3141.27	-2557.00	-2669.98	3233641.55	1242208.03	39.9952304	-104.6660694	0.00	
9920.50†	90.000	180.109	7540.10	3238.16	-2657.00	-2670.17	3233642.31	1242108.04	39.9949559	-104.6660700	0.00	
10020.50†	90.000	180.109	7540.10	3335.06	-2757.00	-2670.36	3233643.07	1242008.04	39.9946814	-104.6660707	0.00	
10120.50†	90.000	180.109	7540.10	3431.96	-2857.00	-2670.55	3233643.83	1241908.05	39.9944069	-104.6660713	0.00	
10220.50†	90.000	180.109	7540.10	3528.86	-2957.00	-2670.74	3233644.59	1241808.06	39.9941324	-104.6660720	0.00	
10320.50†	90.000	180.109	7540.10	3625.75	-3057.00	-2670.93	3233645.35	1241708.06	39.9938579	-104.6660726	0.00	
10420.50†	90.000	180.109	7540.10	3722.65	-3157.00	-2671.12	3233646.11	1241608.07	39.9935834	-104.6660732	0.00	
10520.50†	90.000	180.109	7540.10	3819.55	-3257.00	-2671.31	3233646.87	1241508.08	39.9933089	-104.6660739	0.00	
10620.50†	90.000	180.109	7540.10	3916.45	-3356.99	-2671.50	3233647.63	1241408.08	39.9930344	-104.6660745	0.00	
10720.50†	90.000	180.109	7540.10	4013.35	-3456.99	-2671.69	3233648.39	1241308.09	39.9927598	-104.6660752	0.00	
10820.50†	90.000	180.109	7540.10	4110.24	-3556.99	-2671.88	3233649.15	1241208.10	39.9924853	-104.6660758	0.00	
10920.50†	90.000	180.109	7540.10	4207.14	-3656.99	-2672.07	3233649.91	1241108.10	39.9922108	-104.6660765	0.00	
11020.50†	90.000	180.109	7540.10	4304.04	-3756.99	-2672.26	3233650.67	1241008.11	39.9919363	-104.6660771	0.00	
11120.50†	90.000	180.109	7540.10	4400.94	-3856.99	-2672.45	3233651.44	1240908.12	39.9916618	-104.6660777	0.00	
11220.50†	90.000	180.109	7540.10	4497.84	-3956.99	-2672.65	3233652.20	1240808.12	39.9913873	-104.6660784	0.00	
11320.50†	90.000	180.109	7540.10	4594.73	-4056.99	-2672.84	3233652.96	1240708.13	39.9911128	-104.6660790	0.00	
11420.50†	90.000	180.109	7540.10	4691.63	-4156.99	-2673.03	3233653.72	1240608.13	39.9908383	-104.6660797	0.00	
11520.50†	90.000	180.109	7540.10	4788.53	-4256.99	-2673.22	3233654.48	1240508.14	39.9905638	-104.6660803	0.00	
11620.50†	90.000	180.109	7540.10	4885.43	-4356.99	-2673.41	3233655.24	1240408.15	39.9902893	-104.6660809	0.00	
11720.50†	90.000	180.109	7540.10	4982.32	-4456.99	-2673.60	3233656.00	1240308.15	39.9900148	-104.6660816	0.00	
11820.50†	90.000	180.109	7540.10	5079.22	-4556.99	-2673.79	3233656.76	1240208.16	39.9897402	-104.6660822	0.00	
11920.50†	90.000	180.109	7540.10	5176.12	-4656.99	-2673.98	3233657.52	1240108.17	39.9894657	-104.6660829	0.00	
12020.50†	90.000	180.109	7540.10	5273.02	-4756.99	-2674.17	3233658.28	1240008.17	39.9891912	-104.6660835	0.00	
12120.50†	90.000	180.109	7540.10	5369.92	-4856.99	-2674.36	3233659.04	1239908.18	39.9889167	-104.6660842	0.00	
12220.50†	90.000	180.109	7540.10	5466.81	-4956.99	-2674.55	3233659.80	1239808.19	39.9886422	-104.6660848	0.00	
12320.50†	90.000	180.109	7540.10	5563.71	-5056.99	-2674.74	3233660.56	1239708.19	39.9883677	-104.6660854	0.00	
12420.50†	90.000	180.109	7540.10	5660.61	-5156.99	-2674.93	3233661.32	1239608.20	39.9880932	-104.6660861	0.00	
12520.50†	90.000	180.109	7540.10	5757.51	-5256.99	-2675.12	3233662.08	1239508.21	39.9878187	-104.6660867	0.00	
12620.50†	90.000	180.109	7540.10	5854.41	-5356.99	-2675.31	3233662.84	1239408.21	39.9875442	-104.6660874	0.00	
12720.50†	90.000	180.109	7540.10	5951.30	-5456.99	-2675.50	3233663.60	1239308.22	39.9872697	-104.6660880	0.00	

Planned Wellpath Report

Desha 4-2-4L PWP Rev-A.0

Page 5 of 7

REFERENCE WELLPATH IDENTIFICATION

Operator	CONFLUENCE RESOURCES	Well	Desha 4-2-4L
Field	WELD COUNTY (NAD83, TRUE NORTH)	API/Legal	
Facility	SEC.34-T01N-R65W	Wellbore	Desha 4-2-4L PWB
Slot	SLOT#14 Desha 4-2-4L (620'FSL & 843'FWL,SEC.34)		

WELLPATH DATA (185 stations) † = interpolated, ‡ = extrapolated station

MD [ft]	Inclination [°]	Azimuth [°]	TVD [ft]	Vert Sect [ft]	North [ft]	East [ft]	Grid East [US ft]	Grid North [US ft]	Latitude	Longitude	DLS [°/100ft]	Comments
12820.50†	90.000	180.109	7540.10	6048.20	-5556.99	-2675.69	3233664.37	1239208.23	39.9869952	-104.6660886	0.00	
12920.50†	90.000	180.109	7540.10	6145.10	-5656.99	-2675.88	3233665.13	1239108.23	39.9867207	-104.6660893	0.00	
13020.50†	90.000	180.109	7540.10	6242.00	-5756.99	-2676.08	3233665.89	1239008.24	39.9864461	-104.6660899	0.00	
13120.50†	90.000	180.109	7540.10	6338.89	-5856.99	-2676.27	3233666.65	1238908.24	39.9861716	-104.6660906	0.00	
13220.50†	90.000	180.109	7540.10	6435.79	-5956.99	-2676.46	3233667.41	1238808.25	39.9858971	-104.6660912	0.00	
13320.50†	90.000	180.109	7540.10	6532.69	-6056.99	-2676.65	3233668.17	1238708.26	39.9856226	-104.6660919	0.00	
13420.50†	90.000	180.109	7540.10	6629.59	-6156.99	-2676.84	3233668.93	1238608.26	39.9853481	-104.6660925	0.00	
13520.50†	90.000	180.109	7540.10	6726.49	-6256.99	-2677.03	3233669.69	1238508.27	39.9850736	-104.6660931	0.00	
13620.50†	90.000	180.109	7540.10	6823.38	-6356.99	-2677.22	3233670.45	1238408.28	39.9847991	-104.6660938	0.00	
13720.50†	90.000	180.109	7540.10	6920.28	-6456.99	-2677.41	3233671.21	1238308.28	39.9845246	-104.6660944	0.00	
13820.50†	90.000	180.109	7540.10	7017.18	-6556.99	-2677.60	3233671.97	1238208.29	39.9842501	-104.6660951	0.00	
13920.50†	90.000	180.109	7540.10	7114.08	-6656.99	-2677.79	3233672.73	1238108.30	39.9839756	-104.6660957	0.00	
14020.50†	90.000	180.109	7540.10	7210.98	-6756.99	-2677.98	3233673.49	1238008.30	39.9837011	-104.6660963	0.00	
14120.50†	90.000	180.109	7540.10	7307.87	-6856.99	-2678.17	3233674.25	1237908.31	39.9834265	-104.6660970	0.00	
14220.50†	90.000	180.109	7540.10	7404.77	-6956.99	-2678.36	3233675.01	1237808.32	39.9831520	-104.6660976	0.00	
14320.50†	90.000	180.109	7540.10	7501.67	-7056.99	-2678.55	3233675.77	1237708.32	39.9828775	-104.6660983	0.00	
14420.50†	90.000	180.109	7540.10	7598.57	-7156.99	-2678.74	3233676.53	1237608.33	39.9826030	-104.6660989	0.00	
14520.50†	90.000	180.109	7540.10	7695.46	-7256.99	-2678.93	3233677.30	1237508.34	39.9823285	-104.6660996	0.00	
14620.50†	90.000	180.109	7540.10	7792.36	-7356.99	-2679.12	3233678.06	1237408.34	39.9820540	-104.6661002	0.00	
14720.50†	90.000	180.109	7540.10	7889.26	-7456.99	-2679.32	3233678.82	1237308.35	39.9817795	-104.6661008	0.00	
14820.50†	90.000	180.109	7540.10	7986.16	-7556.99	-2679.51	3233679.58	1237208.35	39.9815050	-104.6661015	0.00	
14920.50†	90.000	180.109	7540.10	8083.06	-7656.99	-2679.70	3233680.34	1237108.36	39.9812305	-104.6661021	0.00	
15020.50†	90.000	180.109	7540.10	8179.95	-7756.99	-2679.89	3233681.10	1237008.37	39.9809560	-104.6661028	0.00	
15120.50†	90.000	180.109	7540.10	8276.85	-7856.99	-2680.08	3233681.86	1236908.37	39.9806815	-104.6661034	0.00	
15220.50†	90.000	180.109	7540.10	8373.75	-7956.99	-2680.27	3233682.62	1236808.38	39.9804069	-104.6661040	0.00	
15320.50†	90.000	180.109	7540.10	8470.65	-8056.99	-2680.46	3233683.38	1236708.39	39.9801324	-104.6661047	0.00	
15420.50†	90.000	180.109	7540.10	8567.55	-8156.99	-2680.65	3233684.14	1236608.39	39.9798579	-104.6661053	0.00	
15520.50†	90.000	180.109	7540.10	8664.44	-8256.99	-2680.84	3233684.90	1236508.40	39.9795834	-104.6661060	0.00	
15620.50†	90.000	180.109	7540.10	8761.34	-8356.99	-2681.03	3233685.66	1236408.41	39.9793089	-104.6661066	0.00	
15720.50†	90.000	180.109	7540.10	8858.24	-8456.99	-2681.22	3233686.42	1236308.41	39.9790344	-104.6661073	0.00	
15820.50†	90.000	180.109	7540.10	8955.14	-8556.99	-2681.41	3233687.18	1236208.42	39.9787599	-104.6661079	0.00	
15920.50†	90.000	180.109	7540.10	9052.03	-8656.99	-2681.60	3233687.94	1236108.43	39.9784854	-104.6661085	0.00	
16020.50†	90.000	180.109	7540.10	9148.93	-8756.99	-2681.79	3233688.70	1236008.43	39.9782109	-104.6661092	0.00	
16120.50†	90.000	180.109	7540.10	9245.83	-8856.98	-2681.98	3233689.46	1235908.44	39.9779364	-104.6661098	0.00	
16220.50†	90.000	180.109	7540.10	9342.73	-8956.98	-2682.17	3233690.23	1235808.45	39.9776619	-104.6661105	0.00	
16320.50†	90.000	180.109	7540.10	9439.63	-9056.98	-2682.36	3233690.99	1235708.45	39.9773874	-104.6661111	0.00	
16420.50†	90.000	180.109	7540.10	9536.52	-9156.98	-2682.55	3233691.75	1235608.46	39.9771128	-104.6661117	0.00	
16520.50†	90.000	180.109	7540.10	9633.42	-9256.98	-2682.75	3233692.51	1235508.46	39.9768383	-104.6661124	0.00	
16620.50†	90.000	180.109	7540.10	9730.32	-9356.98	-2682.94	3233693.27	1235408.47	39.9765638	-104.6661130	0.00	
16720.50†	90.000	180.109	7540.10	9827.22	-9456.98	-2683.13	3233694.03	1235308.48	39.9762893	-104.6661137	0.00	
16820.50†	90.000	180.109	7540.10	9924.12	-9556.98	-2683.32	3233694.79	1235208.48	39.9760148	-104.6661143	0.00	
16920.50†	90.000	180.109	7540.10	10021.01	-9656.98	-2683.51	3233695.55	1235108.49	39.9757403	-104.6661150	0.00	
17020.50†	90.000	180.109	7540.10	10117.91	-9756.98	-2683.70	3233696.31	1235008.50	39.9754658	-104.6661156	0.00	
17120.50†	90.000	180.109	7540.10	10214.81	-9856.98	-2683.89	3233697.07	1234908.50	39.9751913	-104.6661162	0.00	
17220.50†	90.000	180.109	7540.10	10311.71	-9956.98	-2684.08	3233697.83	1234808.51	39.9749168	-104.6661169	0.00	

REFERENCE WELLPATH IDENTIFICATION

Operator	CONFLUENCE RESOURCES	Well	Desha 4-2-4L
Field	WELD COUNTY (NAD83, TRUE NORTH)	API/Legal	
Facility	SEC.34-T01N-R65W	Wellbore	Desha 4-2-4L PWB
Slot	SLOT#14 Desha 4-2-4L (620'FSL & 843'FWL,SEC.34)		

WELLPATH DATA (185 stations) † = interpolated, ‡ = extrapolated station

MD [ft]	Inclination [°]	Azimuth [°]	TVD [ft]	Vert Sect [ft]	North [ft]	East [ft]	Grid East [US ft]	Grid North [US ft]	Latitude	Longitude	DLS [°/100ft]	Comments
17320.50†	90.000	180.109	7540.10	10408.61	-10056.98	-2684.27	3233698.59	1234708.52	39.9746423	-104.6661175	0.00	
17420.50†	90.000	180.109	7540.10	10505.50	-10156.98	-2684.46	3233699.35	1234608.52	39.9743678	-104.6661182	0.00	
17520.50†	90.000	180.109	7540.10	10602.40	-10256.98	-2684.65	3233700.11	1234508.53	39.9740932	-104.6661188	0.00	
17620.50†	90.000	180.109	7540.10	10699.30	-10356.98	-2684.84	3233700.87	1234408.54	39.9738187	-104.6661194	0.00	
17707.47	90.000	180.109	7540.10‡	10783.57	-10443.95	-2685.01	3233701.53	1234321.57	39.9735800	-104.6661200	0.00	TD

HOLE & CASING SECTIONS - Ref Wellbore: Desha 4-2-4L PWB Ref Wellpath: Desha 4-2-4L PWP Rev-A.0

String/Diameter	Start MD [ft]	End MD [ft]	Interval [ft]	Start TVD [ft]	End TVD [ft]	Start N/S [ft]	Start E/W [ft]	End N/S [ft]	End E/W [ft]
9.625in Casing Surface	20.50	1521.51	1501.01	20.50	1500.00	0.00	0.00	-37.47	-176.26

TARGETS

Name	MD [ft]	TVD [ft]	North [ft]	East [ft]	Grid East [US ft]	Grid North [US ft]	Latitude	Longitude	Shape
SEC.04-T01S-R65W	N/A	62.00	62.58	-5675.91	3230610.94	1244798.80	40.0024200	-104.6768000	polygon
2D Polygon: dimensions not calculated									
SEC.04/09-T01S-R65W 470' SETBACK	N/A	62.00	62.58	-5675.91	3230610.94	1244798.80	40.0024200	-104.6768000	polygon
2D Polygon: dimensions not calculated									
SEC.09-T01S-R65W	N/A	62.00	62.58	-5675.91	3230610.94	1244798.80	40.0024200	-104.6768000	polygon
2D Polygon: dimensions not calculated									
2) Desha 4-2-4L BHL REV-1 (470'FSL & 1846'FEL,SEC.09)	17707.47	7540.10	-10443.95	-2685.01	3233701.53	1234321.57	39.9735800	-104.6661200	point
1) Desha 4-2-4L LP REV-1 (470'FNL & 1846'FEL,SEC.04)	8356.22	7540.10	-1092.72	-2667.19	3233630.41	1243672.22	39.9992500	-104.6660600	point

SURVEY PROGRAM - Ref Wellbore: Desha 4-2-4L PWB Ref Wellpath: Desha 4-2-4L PWP Rev-A.0

Start MD [ft]	End MD [ft]	Positional Uncertainty Model	Log Name/Comment	Wellbore
20.50	1521.51	BH NaviTrak (2019) (Axial)		Desha 4-2-4L PWB
1521.51	17805.48	BH AutoTrak Curve/eXpress (2019) (Short spacing)		Desha 4-2-4L PWB

Planned Wellpath Report

Desha 4-2-4L PWP Rev-A.0

Page 7 of 7

REFERENCE WELLPATH IDENTIFICATION

Operator	CONFLUENCE RESOURCES	Well	Desha 4-2-4L
Field	WELD COUNTY (NAD83, TRUE NORTH)	API/Legal	
Facility	SEC.34-T01N-R65W	Wellbore	Desha 4-2-4L PWB
Slot	SLOT#14 Desha 4-2-4L (620'FSL & 843'FWL,SEC.34)		

DESIGN COMMENTS

MD [ft]	Inclination [°]	Azimuth [°]	TVD [ft]	Comment
20.50	0.000	258.000	20.50	Tie On
500.00	0.000	258.000	500.00	End of Tangent
1600.00	22.000	258.000	1573.17	End of Build (J)
4500.00	22.000	258.000	4262.00	End of Tangent (J)
4624.21	23.967	254.111	4376.35	Build (XS)
7659.79	23.967	254.111	7150.20	KOP
8356.22	90.000	180.109	7540.10	LANDING
17707.47	90.000	180.109	7540.10	TD