

CONFLUENCE RESOURCES



Location:	COLORADO	Slot:	SLOT#13 Desha 4-6-1L (620'FSL & 818'FWL,SEC.34)
Field:	WELD COUNTY (NAD83, TRUE NORTH)	Well:	Desha 4-6-1L
Facility:	SEC.34-T01N-R65W	Wellbore:	Desha 4-6-1L PWB
Plot reference wellpath is Desha 4-6-1L PWP RevA.0		Grid System: NAD83 / Lambert Colorado SP, Northern Zone (501), US feet	
True vertical depths are referenced to Rig (20.5) (RT)		North Reference: True north	
Reference wellpath measured depths are referenced to Rig (20.5) (RT)		Scale: True distance	
Rig (20.5) to Mean Sea Level: 5160.5 feet		Coordinates are in feet referenced to Slot	
Mean Sea Level to Mud line (At Slot: SLOT#13 Desha 4-6-1L (620'FSL & 818'FWL,SEC.34)): 0 feet		Depths are in feet	
Offset wellpath MDs are referenced to each path's default MD datum		Created by: painstr on 2020-10-07, Database: WA_Denver	

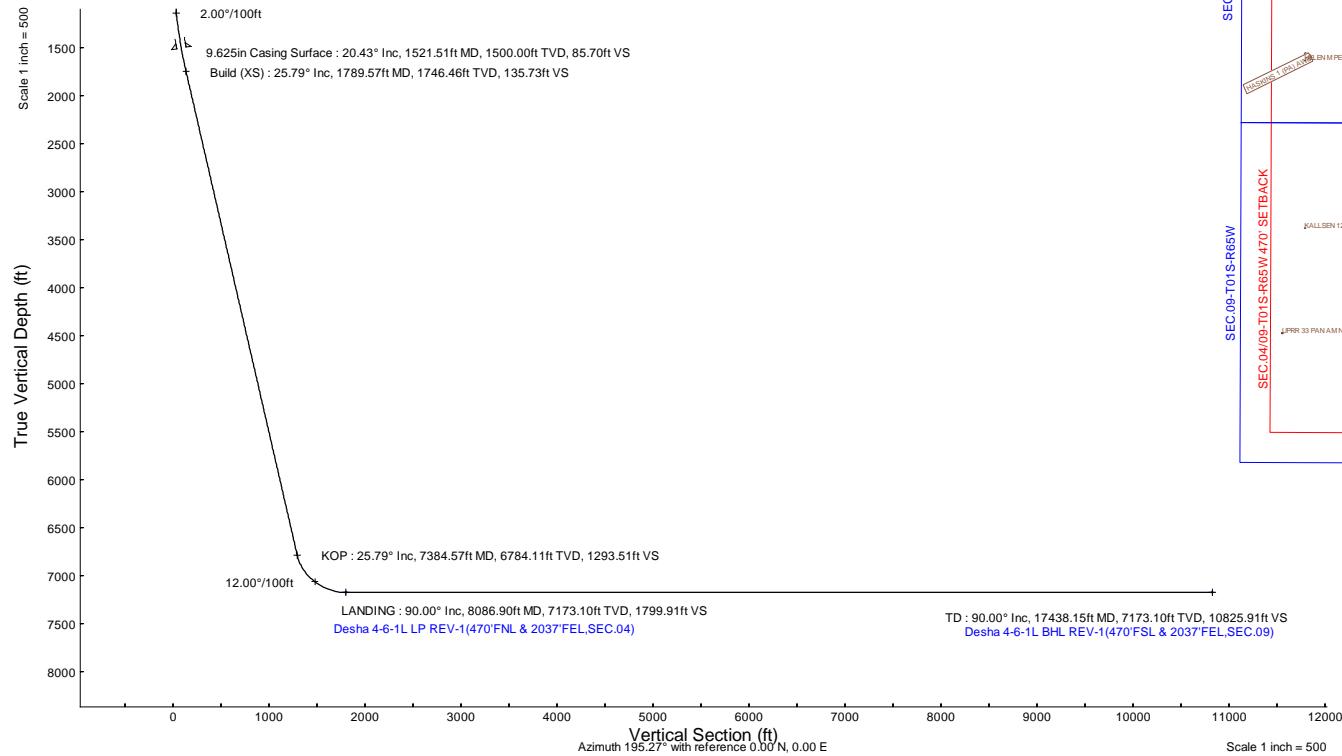
Location Information					
Facility Name			Grid East (US ft)	Grid North (US ft)	Latitude
SEC.34-T01N-R65W			3236186.141	1244789.256	40°00'8.1000"N
Slot			Grid East (US ft)	Grid North (US ft)	Latitude
SLOT#13 Desha 4-6-1L (620'FSL & 818'FWL,SEC.34)			3236261.776	1244789.975	40°00'8.1000"N
Rig (20.5) (RT) to Mud line (At Slot: SLOT#13 Desha 4-6-1L (620'FSL & 818'FWL,SEC.34))			5160.5R		
Mean Sea Level to Mud line (At Slot: SLOT#13 Desha 4-6-1L (620'FSL & 818'FWL,SEC.34))			0R		
Rig (20.5) (RT) to Mean Sea Level			5160.5R		

Survey Program					
Start MD (ft)	End MD (ft)	Tool	Model	Log Name/Comment	Wellbore
20.50	1521.51	BH NavTrak (2019)	BH NavTrak (2019) (Axial)		Desha 4-6-1L PWB
1521.51	17563.68	BH AutoTrak Curve/xpress (2019)	BH AutoTrak Curve/xpress (2019) (Short spacing)		Desha 4-6-1L PWB

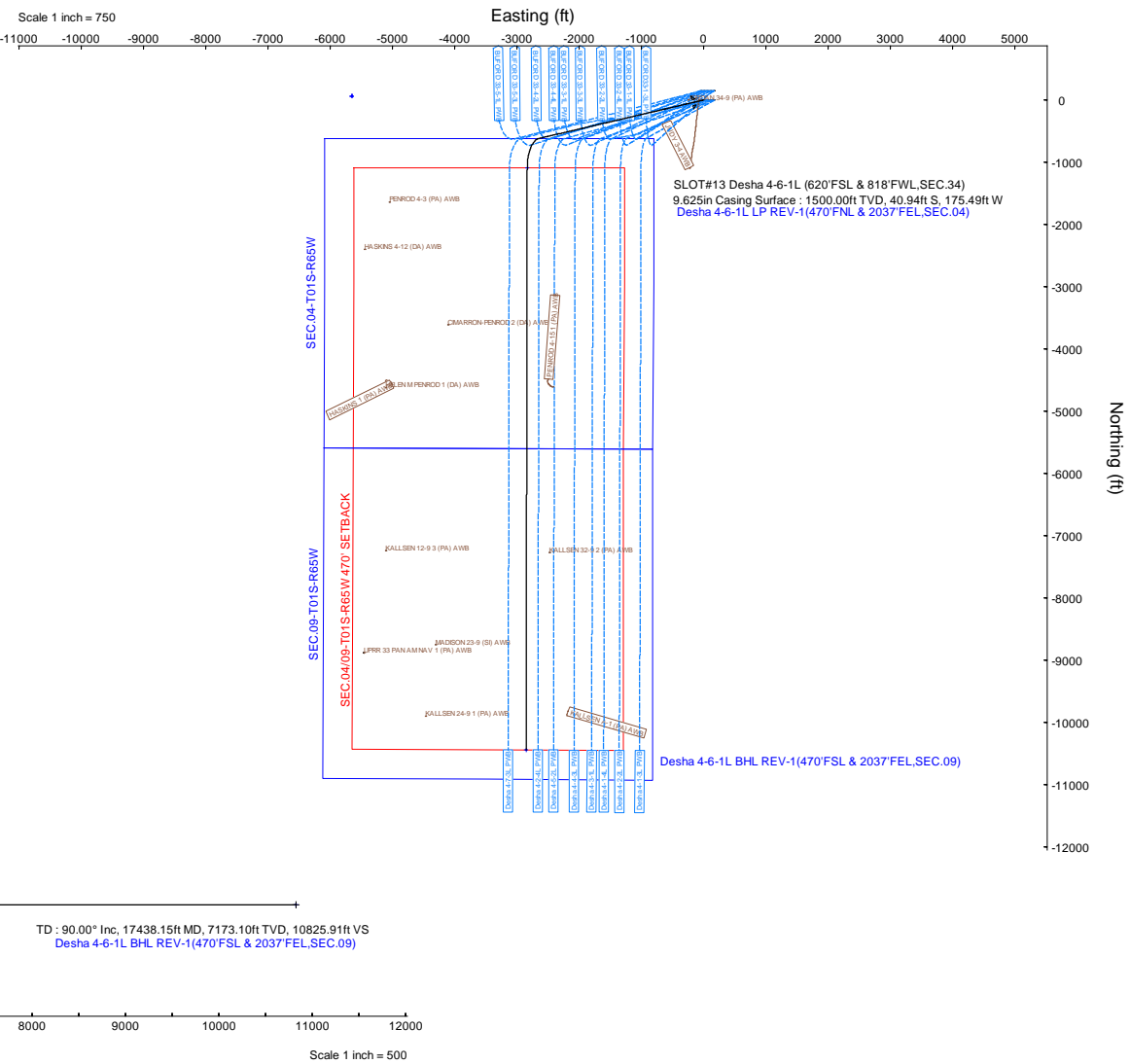
Hole and Casing Sections									
Name	Start MD (ft)	End MD (ft)	Interval (ft)	Start TVD (ft)	End TVD (ft)	Start Local N (ft)	Start Local E (ft)	End Local N (ft)	End Local E (ft)
9.625in Casing Surface	20.50	1521.51	1501.01	20.50	1500.00	0.00	0.00	-40.94	-175.49

Bottom Hole Location									
MD (ft)	Inc (°)	Az (°)	TVD (ft)	Local N (ft)	Local E (ft)	Grid East (US ft)	Grid North (US ft)	Latitude	Longitude
17438.15	90.000	180.110	7173.10	-10443.93	-2850.37	3233510.96	1234319.78	39°58'24.8880"N	104°40'0.4800"W

Targets									
Name	MD (ft)	TVD (ft)	Local N (ft)	Local E (ft)	Grid East (US ft)	Grid North (US ft)	Latitude	Longitude	
SEC.04-T01S-R65W	N/A	62.00	62.57	-5650.70	3230610.94	1244798.80	40°00'8.1120"N	104°40'36.4800"W	
SEC.0409-T01S-R65W 470' SETBACK	N/A	62.00	62.57	-5650.70	3230610.94	1244798.80	40°00'8.1120"N	104°40'36.4800"W	
SEC.09-T01S-R65W	N/A	62.00	62.57	-5650.70	3230610.94	1244798.80	40°00'8.1120"N	104°40'36.4800"W	
Desha 4-6-1L BHL REV-1(470'FSL & 2037'FEL,SEC.09)	17438.15	7173.10	-10443.93	-2850.37	3233510.96	1234319.78	39°58'24.8880"N	104°40'0.4800"W	
Desha 4-6-1L LP REV-1(470'FSL & 2037'FEL,SEC.04)	8086.90	7173.10	-1092.70	-2832.49	3233439.91	1243670.43	39°59'57.3000"N	104°40'0.2640"W	



Well Profile Data								
Design Comment	MD (ft)	Inc (°)	Az (°)	TVD (ft)	Local N (ft)	Local E (ft)	DLS (°/100ft)	VS (ft)
Tie On	20.50	0.000	256.867	20.50	0.00	0.00	0.00	0.00
End of Tangent	500.00	0.000	256.867	500.00	0.00	0.00	0.00	0.00
Build (XS)	1789.57	25.791	256.867	1746.46	-64.84	-277.91	2.00	135.73
KOP	7384.57	25.791	256.867	6784.11	-617.96	-2648.60	0.00	1293.51
LANDING	8086.90	90.000	180.110	7173.10	-1092.70	-2832.49	12.00	1799.91
TD	17438.15	90.000	180.110	7173.10	-10443.93	-2850.37	0.00	10825.91





Planned Wellpath Report

Desha 4-6-1L PWP Rev-A.0

Page 1 of 7



REFERENCE WELLPATH IDENTIFICATION

Operator	CONFLUENCE RESOURCES	Well	Desha 4-6-1L
Field	WELD COUNTY (NAD83, TRUE NORTH)	API/Legal	
Facility	SEC.34-T01N-R65W	Wellbore	Desha 4-6-1L PWB
Slot	SLOT#13 Desha 4-6-1L (620'FSL & 818'FWL,SEC.34)		

REPORT SETUP INFORMATION

Projection System	NAD83 / Lambert Colorado SP, Northern Zone (501), US feet	Software System	WellArchitect® 6.0
North Reference	True	User	Painsetr
Scale	0.999966	Report Generated	10/7/2020 at 1:09:54 PM
Convergence at slot	0.54° East	Database	WA_Denver

WELLPATH LOCATION

	Local coordinates		Grid coordinates		Geographic coordinates	
	North[ft]	East[ft]	Easting[US ft]	Northing[US ft]	Latitude	Longitude
Slot Location	0.00	75.64	3236261.78	1244789.98	40.0022500°	-104.6566300°
Facility Reference Pt			3236186.14	1244789.26	40.0022500°	-104.6569000°
Field Reference Pt			3230456.90	1245096.09	40.0032400°	-104.6773400°

WELLPATH DATUM

Calculation method	Minimum curvature	Rig (20.5') (RT) to Facility Vertical Datum	5160.50ft
Horizontal Reference Pt	Slot	Rig (20.5') (RT) to Mean Sea Level	5160.50ft
Vertical Reference Pt	Rig (20.5') (RT)	Rig (20.5') (RT) to Mud Line at Slot (SLOT#13 Desha 4-6-1L (620'FSL & 818'FWL,SEC.34))	5160.50ft
MD Reference Pt	Rig (20.5') (RT)	Section Origin	N 0.00, E 0.00 ft
Field Vertical Reference	Mean Sea Level	Section Azimuth	195.27°

Planned Wellpath Report

Desha 4-6-1L PWP Rev-A.0

Page 2 of 7

REFERENCE WELLPATH IDENTIFICATION

Operator	CONFLUENCE RESOURCES	Well	Desha 4-6-1L
Field	WELD COUNTY (NAD83, TRUE NORTH)	API/Legal	
Facility	SEC.34-T01N-R65W	Wellbore	Desha 4-6-1L PWB
Slot	SLOT#13 Desha 4-6-1L (620'FSL & 818'FWL,SEC.34)		

WELLPATH DATA (181 stations) † = interpolated, ‡ = extrapolated station

MD [ft]	Inclination [°]	Azimuth [°]	TVD [ft]	Vert Sect [ft]	North [ft]	East [ft]	Grid East [US ft]	Grid North [US ft]	Latitude	Longitude	DLS [°/100ft]	Comments
0.00†	0.000	256.867	0.00	0.00	0.00	0.00	3236261.78	1244789.98	40.0022500	-104.6566300	0.00	
20.50	0.000	256.867	20.50	0.00	0.00	0.00	3236261.78	1244789.98	40.0022500	-104.6566300	0.00	Tie On
120.50†	0.000	256.867	120.50	0.00	0.00	0.00	3236261.78	1244789.98	40.0022500	-104.6566300	0.00	
220.50†	0.000	256.867	220.50	0.00	0.00	0.00	3236261.78	1244789.98	40.0022500	-104.6566300	0.00	
320.50†	0.000	256.867	320.50	0.00	0.00	0.00	3236261.78	1244789.98	40.0022500	-104.6566300	0.00	
420.50†	0.000	256.867	420.50	0.00	0.00	0.00	3236261.78	1244789.98	40.0022500	-104.6566300	0.00	
500.00	0.000	256.867	500.00	0.00	0.00	0.00	3236261.78	1244789.98	40.0022500	-104.6566300	0.00	End of Tangent
520.50†	0.410	256.867	520.50	0.03	-0.02	-0.07	3236261.71	1244789.96	40.0022500	-104.6566303	2.00	
620.50†	2.410	256.867	620.46	1.21	-0.58	-2.47	3236259.31	1244789.38	40.0022484	-104.6566388	2.00	
720.50†	4.410	256.867	720.28	4.03	-1.93	-8.26	3236253.54	1244787.97	40.0022447	-104.6566595	2.00	
820.50†	6.410	256.867	819.83	8.52	-4.07	-17.44	3236244.38	1244785.74	40.0022388	-104.6566923	2.00	
920.50†	8.410	256.867	918.99	14.65	-7.00	-30.00	3236231.85	1244782.69	40.0022308	-104.6567371	2.00	
1020.50†	10.410	256.867	1017.64	22.43	-10.71	-45.92	3236215.96	1244778.83	40.0022206	-104.6567939	2.00	
1120.50†	12.410	256.867	1115.66	31.84	-15.21	-65.19	3236196.74	1244774.15	40.0022082	-104.6568627	2.00	
1220.50†	14.410	256.867	1212.93	42.86	-20.48	-87.77	3236174.21	1244768.66	40.0021938	-104.6569433	2.00	
1320.50†	16.410	256.867	1309.33	55.50	-26.52	-113.65	3236148.39	1244762.38	40.0021772	-104.6570357	2.00	
1420.50†	18.410	256.867	1404.74	69.73	-33.31	-142.78	3236119.32	1244755.31	40.0021586	-104.6571397	2.00	
1520.50†	20.410	256.867	1499.05	85.54	-40.86	-175.14	3236087.04	1244747.45	40.0021378	-104.6572552	2.00	
1620.50†	22.410	256.867	1592.15	102.90	-49.16	-210.69	3236051.57	1244738.82	40.0021151	-104.6573821	2.00	
1720.50†	24.410	256.867	1683.91	121.79	-58.18	-249.38	3236012.97	1244729.42	40.0020903	-104.6575202	2.00	
1789.57	25.791	256.867	1746.46	135.73	-64.84	-277.91	3235984.50	1244722.50	40.0020720	-104.6576220	2.00	Build (XS)
1820.50†	25.791	256.867	1774.31	142.13	-67.90	-291.02	3235971.43	1244719.31	40.0020636	-104.6576688	0.00	
1920.50†	25.791	256.867	1864.35	162.82	-77.79	-333.39	3235929.15	1244709.03	40.0020365	-104.6578200	0.00	
2020.50†	25.791	256.867	1954.38	183.51	-87.67	-375.76	3235886.88	1244698.74	40.0020093	-104.6579713	0.00	
2120.50†	25.791	256.867	2044.42	204.21	-97.56	-418.13	3235844.60	1244688.45	40.0019822	-104.6581225	0.00	
2220.50†	25.791	256.867	2134.46	224.90	-107.44	-460.51	3235802.33	1244678.16	40.0019550	-104.6582738	0.00	
2320.50†	25.791	256.867	2224.50	245.59	-117.33	-502.88	3235760.06	1244667.87	40.0019279	-104.6584250	0.00	
2420.50†	25.791	256.867	2314.54	266.29	-127.22	-545.25	3235717.78	1244657.58	40.0019008	-104.6585762	0.00	
2520.50†	25.791	256.867	2404.58	286.98	-137.10	-587.62	3235675.51	1244647.30	40.0018736	-104.6587275	0.00	
2620.50†	25.791	256.867	2494.61	307.67	-146.99	-629.99	3235633.23	1244637.01	40.0018465	-104.6588787	0.00	
2720.50†	25.791	256.867	2584.65	328.37	-156.87	-672.36	3235590.96	1244626.72	40.0018193	-104.6590300	0.00	
2820.50†	25.791	256.867	2674.69	349.06	-166.76	-714.74	3235548.68	1244616.43	40.0017922	-104.6591812	0.00	
2920.50†	25.791	256.867	2764.73	369.75	-176.65	-757.11	3235506.41	1244606.14	40.0017651	-104.6593324	0.00	
3020.50†	25.791	256.867	2854.77	390.45	-186.53	-799.48	3235464.14	1244595.86	40.0017379	-104.6594837	0.00	
3120.50†	25.791	256.867	2944.81	411.14	-196.42	-841.85	3235421.86	1244585.57	40.0017108	-104.6596349	0.00	
3220.50†	25.791	256.867	3034.85	431.83	-206.30	-884.22	3235379.59	1244575.28	40.0016836	-104.6597862	0.00	
3320.50†	25.791	256.867	3124.88	452.53	-216.19	-926.59	3235337.31	1244564.99	40.0016565	-104.6599374	0.00	
3420.50†	25.791	256.867	3214.92	473.22	-226.08	-968.96	3235295.04	1244554.70	40.0016294	-104.6600886	0.00	
3520.50†	25.791	256.867	3304.96	493.91	-235.96	-1011.34	3235252.77	1244544.41	40.0016022	-104.6602399	0.00	
3620.50†	25.791	256.867	3395.00	514.61	-245.85	-1053.71	3235210.49	1244534.13	40.0015751	-104.6603911	0.00	
3720.50†	25.791	256.867	3485.04	535.30	-255.73	-1096.08	3235168.22	1244523.84	40.0015479	-104.6605424	0.00	
3820.50†	25.791	256.867	3575.08	555.99	-265.62	-1138.45	3235125.94	1244513.55	40.0015208	-104.6606936	0.00	
3920.50†	25.791	256.867	3665.11	576.68	-275.51	-1180.82	3235083.67	1244503.26	40.0014936	-104.6608449	0.00	
4020.50†	25.791	256.867	3755.15	597.38	-285.39	-1223.19	3235041.40	1244492.97	40.0014665	-104.6609961	0.00	
4120.50†	25.791	256.867	3845.19	618.07	-295.28	-1265.57	3234999.12	1244482.69	40.0014393	-104.6611473	0.00	

Planned Wellpath Report

Desha 4-6-1L PWP Rev-A.0

Page 3 of 7

REFERENCE WELLPATH IDENTIFICATION			
Operator	CONFLUENCE RESOURCES	Well	Desha 4-6-1L
Field	WELD COUNTY (NAD83, TRUE NORTH)	API/Legal	
Facility	SEC.34-T01N-R65W	Wellbore	Desha 4-6-1L PWB
Slot	SLOT#13 Desha 4-6-1L (620'FSL & 818'FWL,SEC.34)		

WELLPATH DATA (181 stations) † = interpolated, ‡ = extrapolated station

MD [ft]	Inclination [°]	Azimuth [°]	TVD [ft]	Vert Sect [ft]	North [ft]	East [ft]	Grid East [US ft]	Grid North [US ft]	Latitude	Longitude	DLS [°/100ft]	Comments
4220.50†	25.791	256.867	3935.23	638.76	-305.16	-1307.94	3234956.85	1244472.40	40.0014122	-104.6612986	0.00	
4320.50†	25.791	256.867	4025.27	659.46	-315.05	-1350.31	3234914.57	1244462.11	40.0013851	-104.6614498	0.00	
4420.50†	25.791	256.867	4115.31	680.15	-324.94	-1392.68	3234872.30	1244451.82	40.0013579	-104.6616011	0.00	
4520.50†	25.791	256.867	4205.34	700.84	-334.82	-1435.05	3234830.03	1244441.53	40.0013308	-104.6617523	0.00	
4620.50†	25.791	256.867	4295.38	721.54	-344.71	-1477.42	3234787.75	1244431.25	40.0013036	-104.6619035	0.00	
4720.50†	25.791	256.867	4385.42	742.23	-354.59	-1519.79	3234745.48	1244420.96	40.0012765	-104.6620548	0.00	
4820.50†	25.791	256.867	4475.46	762.92	-364.48	-1562.17	3234703.20	1244410.67	40.0012493	-104.6622060	0.00	
4920.50†	25.791	256.867	4565.50	783.62	-374.37	-1604.54	3234660.93	1244400.38	40.0012222	-104.6623572	0.00	
5020.50†	25.791	256.867	4655.54	804.31	-384.25	-1646.91	3234618.65	1244390.09	40.0011950	-104.6625085	0.00	
5120.50†	25.791	256.867	4745.58	825.00	-394.14	-1689.28	3234576.38	1244379.80	40.0011679	-104.6626597	0.00	
5220.50†	25.791	256.867	4835.61	845.70	-404.02	-1731.65	3234534.11	1244369.52	40.0011408	-104.6628110	0.00	
5320.50†	25.791	256.867	4925.65	866.39	-413.91	-1774.02	3234491.83	1244359.23	40.0011136	-104.6629622	0.00	
5420.50†	25.791	256.867	5015.69	887.08	-423.80	-1816.40	3234449.56	1244348.94	40.0010865	-104.6631134	0.00	
5520.50†	25.791	256.867	5105.73	907.78	-433.68	-1858.77	3234407.28	1244338.65	40.0010593	-104.6632647	0.00	
5620.50†	25.791	256.867	5195.77	928.47	-443.57	-1901.14	3234365.01	1244328.36	40.0010322	-104.6634159	0.00	
5720.50†	25.791	256.867	5285.81	949.16	-453.45	-1943.51	3234322.74	1244318.08	40.0010050	-104.6635672	0.00	
5820.50†	25.791	256.867	5375.84	969.86	-463.34	-1985.88	3234280.46	1244307.79	40.0009779	-104.6637184	0.00	
5920.50†	25.791	256.867	5465.88	990.55	-473.23	-2028.25	3234238.19	1244297.50	40.0009507	-104.6638696	0.00	
6020.50†	25.791	256.867	5555.92	1011.24	-483.11	-2070.62	3234195.91	1244287.21	40.0009236	-104.6640209	0.00	
6120.50†	25.791	256.867	5645.96	1031.94	-493.00	-2113.00	3234153.64	1244276.92	40.0008964	-104.6641721	0.00	
6220.50†	25.791	256.867	5736.00	1052.63	-502.88	-2155.37	3234111.37	1244266.63	40.0008693	-104.6643233	0.00	
6320.50†	25.791	256.867	5826.04	1073.32	-512.77	-2197.74	3234069.09	1244256.35	40.0008421	-104.6644746	0.00	
6420.50†	25.791	256.867	5916.08	1094.02	-522.65	-2240.11	3234026.82	1244246.06	40.0008150	-104.6646258	0.00	
6520.50†	25.791	256.867	6006.11	1114.71	-532.54	-2282.48	3233984.54	1244235.77	40.0007878	-104.6647771	0.00	
6620.50†	25.791	256.867	6096.15	1135.40	-542.43	-2324.85	3233942.27	1244225.48	40.0007607	-104.6649283	0.00	
6720.50†	25.791	256.867	6186.19	1156.10	-552.31	-2367.23	3233900.00	1244215.19	40.0007335	-104.6650795	0.00	
6820.50†	25.791	256.867	6276.23	1176.79	-562.20	-2409.60	3233857.72	1244204.91	40.0007064	-104.6652308	0.00	
6920.50†	25.791	256.867	6366.27	1197.48	-572.08	-2451.97	3233815.45	1244194.62	40.0006792	-104.6653820	0.00	
7020.50†	25.791	256.867	6456.31	1218.17	-581.97	-2494.34	3233773.17	1244184.33	40.0006521	-104.6655332	0.00	
7120.50†	25.791	256.867	6546.34	1238.87	-591.86	-2536.71	3233730.90	1244174.04	40.0006249	-104.6656845	0.00	
7220.50†	25.791	256.867	6636.38	1259.56	-601.74	-2579.08	3233688.63	1244163.75	40.0005978	-104.6658357	0.00	
7320.50†	25.791	256.867	6726.42	1280.25	-611.63	-2621.45	3233646.35	1244153.47	40.0005706	-104.6659869	0.00	
7384.57	25.791	256.867	6784.11	1293.51	-617.96	-2648.60	3233619.27	1244146.87	40.0005532	-104.6660838	0.00	KOP
7420.50†	26.994	247.542	6816.31	1302.22	-622.86	-2663.76	3233604.16	1244141.84	40.0005398	-104.6661379	12.00	
7520.50†	32.985	226.557	6903.12	1339.51	-650.34	-2704.64	3233563.54	1244113.96	40.0004643	-104.6662839	12.00	
7620.50†	41.418	212.333	6982.85	1394.59	-697.18	-2742.24	3233526.39	1244066.77	40.0003358	-104.6664180	12.00	
7720.50†	51.080	202.432	7052.01	1465.07	-761.32	-2774.89	3233494.35	1244002.32	40.0001597	-104.6665346	12.00	
7820.50†	61.374	194.986	7107.58	1547.85	-839.96	-2801.18	3233468.81	1243923.44	39.9999438	-104.6666284	12.00	
7920.50†	72.000	188.901	7147.13	1639.34	-929.67	-2819.96	3233450.89	1243833.56	39.9996975	-104.6666953	12.00	
8020.50†	82.794	183.519	7168.93	1735.51	-1026.51	-2830.40	3233441.37	1243736.63	39.9994317	-104.6667326	12.00	
8086.90	90.000	180.110	7173.10†	1799.91	-1092.70	-2832.49	3233439.91	1243670.43	39.9992500	-104.6667400	12.00	LANDING
8120.50†	90.000	180.110	7173.10	1832.34	-1126.30	-2832.55	3233440.17	1243636.83	39.9991578	-104.6667402	0.00	
8220.50†	90.000	180.110	7173.10	1928.86	-1226.30	-2832.74	3233440.93	1243536.84	39.9988833	-104.6667409	0.00	
8320.50†	90.000	180.110	7173.10	2025.39	-1326.30	-2832.93	3233441.69	1243436.84	39.9986088	-104.6667415	0.00	
8420.50†	90.000	180.110	7173.10	2121.91	-1426.30	-2833.12	3233442.45	1243336.85	39.9983342	-104.6667421	0.00	

Planned Wellpath Report

Desha 4-6-1L PWP Rev-A.0

Page 4 of 7

REFERENCE WELLPATH IDENTIFICATION

Operator	CONFLUENCE RESOURCES	Well	Desha 4-6-1L
Field	WELD COUNTY (NAD83, TRUE NORTH)	API/Legal	
Facility	SEC.34-T01N-R65W	Wellbore	Desha 4-6-1L PWB
Slot	SLOT#13 Desha 4-6-1L (620'FSL & 818'FWL,SEC.34)		

WELLPATH DATA (181 stations) † = interpolated, ‡ = extrapolated station

MD [ft]	Inclination [°]	Azimuth [°]	TVD [ft]	Vert Sect [ft]	North [ft]	East [ft]	Grid East [US ft]	Grid North [US ft]	Latitude	Longitude	DLS [°/100ft]	Comments
8520.50†	90.000	180.110	7173.10	2218.43	-1526.30	-2833.31	3233443.21	1243236.86	39.9980597	-104.6667428	0.00	
8620.50†	90.000	180.110	7173.10	2314.95	-1626.30	-2833.51	3233443.97	1243136.86	39.9977852	-104.6667434	0.00	
8720.50†	90.000	180.110	7173.10	2411.47	-1726.30	-2833.70	3233444.73	1243036.87	39.9975107	-104.6667441	0.00	
8820.50†	90.000	180.110	7173.10	2507.99	-1826.30	-2833.89	3233445.49	1242936.88	39.9972362	-104.6667447	0.00	
8920.50†	90.000	180.110	7173.10	2604.52	-1926.29	-2834.08	3233446.25	1242836.88	39.9969617	-104.6667454	0.00	
9020.50†	90.000	180.110	7173.10	2701.04	-2026.29	-2834.27	3233447.01	1242736.89	39.9966872	-104.6667460	0.00	
9120.50†	90.000	180.110	7173.10	2797.56	-2126.29	-2834.46	3233447.77	1242636.90	39.9964127	-104.6667466	0.00	
9220.50†	90.000	180.110	7173.10	2894.08	-2226.29	-2834.65	3233448.53	1242536.90	39.9961382	-104.6667473	0.00	
9320.50†	90.000	180.110	7173.10	2990.60	-2326.29	-2834.84	3233449.29	1242436.91	39.9958637	-104.6667479	0.00	
9420.50†	90.000	180.110	7173.10	3087.13	-2426.29	-2835.04	3233450.05	1242336.92	39.9955892	-104.6667486	0.00	
9520.50†	90.000	180.110	7173.10	3183.65	-2526.29	-2835.23	3233450.81	1242236.92	39.9953147	-104.6667492	0.00	
9620.50†	90.000	180.110	7173.10	3280.17	-2626.29	-2835.42	3233451.57	1242136.93	39.9950401	-104.6667498	0.00	
9720.50†	90.000	180.110	7173.10	3376.69	-2726.29	-2835.61	3233452.32	1242036.94	39.9947656	-104.6667505	0.00	
9820.50†	90.000	180.110	7173.10	3473.21	-2826.29	-2835.80	3233453.08	1241936.94	39.9944911	-104.6667511	0.00	
9920.50†	90.000	180.110	7173.10	3569.73	-2926.29	-2835.99	3233453.84	1241836.95	39.9942166	-104.6667518	0.00	
10020.50†	90.000	180.110	7173.10	3666.26	-3026.29	-2836.18	3233454.60	1241736.95	39.9939421	-104.6667524	0.00	
10120.50†	90.000	180.110	7173.10	3762.78	-3126.29	-2836.37	3233455.36	1241636.96	39.9936676	-104.6667531	0.00	
10220.50†	90.000	180.110	7173.10	3859.30	-3226.29	-2836.57	3233456.12	1241536.97	39.9933931	-104.6667537	0.00	
10320.50†	90.000	180.110	7173.10	3955.82	-3326.29	-2836.76	3233456.88	1241436.97	39.9931186	-104.6667543	0.00	
10420.50†	90.000	180.110	7173.10	4052.34	-3426.29	-2836.95	3233457.64	1241336.98	39.9928441	-104.6667550	0.00	
10520.50†	90.000	180.110	7173.10	4148.87	-3526.29	-2837.14	3233458.40	1241236.99	39.9925696	-104.6667556	0.00	
10620.50†	90.000	180.110	7173.10	4245.39	-3626.29	-2837.33	3233459.16	1241136.99	39.9922951	-104.6667563	0.00	
10720.50†	90.000	180.110	7173.10	4341.91	-3726.29	-2837.52	3233459.92	1241037.00	39.9920206	-104.6667569	0.00	
10820.50†	90.000	180.110	7173.10	4438.43	-3826.29	-2837.71	3233460.68	1240937.01	39.9917460	-104.6667575	0.00	
10920.50†	90.000	180.110	7173.10	4534.95	-3926.29	-2837.90	3233461.44	1240837.01	39.9914715	-104.6667582	0.00	
11020.50†	90.000	180.110	7173.10	4631.47	-4026.29	-2838.10	3233462.20	1240737.02	39.9911970	-104.6667588	0.00	
11120.50†	90.000	180.110	7173.10	4728.00	-4126.29	-2838.29	3233462.96	1240637.03	39.9909225	-104.6667595	0.00	
11220.50†	90.000	180.110	7173.10	4824.52	-4226.29	-2838.48	3233463.72	1240537.03	39.9906480	-104.6667601	0.00	
11320.50†	90.000	180.110	7173.10	4921.04	-4326.29	-2838.67	3233464.48	1240437.04	39.9903735	-104.6667608	0.00	
11420.50†	90.000	180.110	7173.10	5017.56	-4426.29	-2838.86	3233465.24	1240337.05	39.9900990	-104.6667614	0.00	
11520.50†	90.000	180.110	7173.10	5114.08	-4526.29	-2839.05	3233466.00	1240237.05	39.9898245	-104.6667620	0.00	
11620.50†	90.000	180.110	7173.10	5210.61	-4626.29	-2839.24	3233466.76	1240137.06	39.9895500	-104.6667627	0.00	
11720.50†	90.000	180.110	7173.10	5307.13	-4726.29	-2839.43	3233467.52	1240037.06	39.9892755	-104.6667633	0.00	
11820.50†	90.000	180.110	7173.10	5403.65	-4826.29	-2839.63	3233468.28	1239937.07	39.9890010	-104.6667640	0.00	
11920.50†	90.000	180.110	7173.10	5500.17	-4926.29	-2839.82	3233469.04	1239837.08	39.9887264	-104.6667646	0.00	
12020.50†	90.000	180.110	7173.10	5596.69	-5026.29	-2840.01	3233469.80	1239737.08	39.9884519	-104.6667652	0.00	
12120.50†	90.000	180.110	7173.10	5693.21	-5126.29	-2840.20	3233470.56	1239637.09	39.9881774	-104.6667659	0.00	
12220.50†	90.000	180.110	7173.10	5789.74	-5226.29	-2840.39	3233471.32	1239537.10	39.9879029	-104.6667665	0.00	
12320.50†	90.000	180.110	7173.10	5886.26	-5326.29	-2840.58	3233472.08	1239437.10	39.9876284	-104.6667672	0.00	
12420.50†	90.000	180.110	7173.10	5982.78	-5426.29	-2840.77	3233472.84	1239337.11	39.9873539	-104.6667678	0.00	
12520.50†	90.000	180.110	7173.10	6079.30	-5526.29	-2840.96	3233473.60	1239237.12	39.9870794	-104.6667685	0.00	
12620.50†	90.000	180.110	7173.10	6175.82	-5626.29	-2841.15	3233474.36	1239137.12	39.9868049	-104.6667691	0.00	
12720.50†	90.000	180.110	7173.10	6272.35	-5726.29	-2841.35	3233475.12	1239037.13	39.9865304	-104.6667697	0.00	
12820.50†	90.000	180.110	7173.10	6368.87	-5826.29	-2841.54	3233475.88	1238937.14	39.9862559	-104.6667704	0.00	
12920.50†	90.000	180.110	7173.10	6465.39	-5926.29	-2841.73	3233476.64	1238837.14	39.9859814	-104.6667710	0.00	

Planned Wellpath Report

Desha 4-6-1L PWP Rev-A.0

Page 5 of 7

REFERENCE WELLPATH IDENTIFICATION

Operator	CONFLUENCE RESOURCES	Well	Desha 4-6-1L
Field	WELD COUNTY (NAD83, TRUE NORTH)	API/Legal	
Facility	SEC.34-T01N-R65W	Wellbore	Desha 4-6-1L PWB
Slot	SLOT#13 Desha 4-6-1L (620'FSL & 818'FWL,SEC.34)		

WELLPATH DATA (181 stations) † = interpolated, ‡ = extrapolated station

MD [ft]	Inclination [°]	Azimuth [°]	TVD [ft]	Vert Sect [ft]	North [ft]	East [ft]	Grid East [US ft]	Grid North [US ft]	Latitude	Longitude	DLS [°/100ft]	Comments
13020.50†	90.000	180.110	7173.10	6561.91	-6026.29	-2841.92	3233477.40	1238737.15	39.9857068	-104.6667717	0.00	
13120.50†	90.000	180.110	7173.10	6658.43	-6126.29	-2842.11	3233478.16	1238637.16	39.9854323	-104.6667723	0.00	
13220.50†	90.000	180.110	7173.10	6754.95	-6226.29	-2842.30	3233478.92	1238537.16	39.9851578	-104.6667729	0.00	
13320.50†	90.000	180.110	7173.10	6851.48	-6326.29	-2842.49	3233479.68	1238437.17	39.9848833	-104.6667736	0.00	
13420.50†	90.000	180.110	7173.10	6948.00	-6426.29	-2842.68	3233480.44	1238337.17	39.9846088	-104.6667742	0.00	
13520.50†	90.000	180.110	7173.10	7044.52	-6526.29	-2842.88	3233481.20	1238237.18	39.9843343	-104.6667749	0.00	
13620.50†	90.000	180.110	7173.10	7141.04	-6626.29	-2843.07	3233481.96	1238137.19	39.9840598	-104.6667755	0.00	
13720.50†	90.000	180.110	7173.10	7237.56	-6726.29	-2843.26	3233482.72	1238037.19	39.9837853	-104.6667762	0.00	
13820.50†	90.000	180.110	7173.10	7334.09	-6826.29	-2843.45	3233483.48	1237937.20	39.9835108	-104.6667768	0.00	
13920.50†	90.000	180.110	7173.10	7430.61	-6926.29	-2843.64	3233484.24	1237837.21	39.9832363	-104.6667774	0.00	
14020.50†	90.000	180.110	7173.10	7527.13	-7026.29	-2843.83	3233485.00	1237737.21	39.9829618	-104.6667781	0.00	
14120.50†	90.000	180.110	7173.10	7623.65	-7126.29	-2844.02	3233485.76	1237637.22	39.9826873	-104.6667787	0.00	
14220.50†	90.000	180.110	7173.10	7720.17	-7226.29	-2844.21	3233486.52	1237537.23	39.9824127	-104.6667794	0.00	
14320.50†	90.000	180.110	7173.10	7816.69	-7326.28	-2844.41	3233487.28	1237437.23	39.9821382	-104.6667800	0.00	
14420.50†	90.000	180.110	7173.10	7913.22	-7426.28	-2844.60	3233488.04	1237337.24	39.9818637	-104.6667806	0.00	
14520.50†	90.000	180.110	7173.10	8009.74	-7526.28	-2844.79	3233488.80	1237237.25	39.9815892	-104.6667813	0.00	
14620.50†	90.000	180.110	7173.10	8106.26	-7626.28	-2844.98	3233489.56	1237137.25	39.9813147	-104.6667819	0.00	
14720.50†	90.000	180.110	7173.10	8202.78	-7726.28	-2845.17	3233490.32	1237037.26	39.9810402	-104.6667826	0.00	
14820.50†	90.000	180.110	7173.10	8299.30	-7826.28	-2845.36	3233491.08	1236937.27	39.9807657	-104.6667832	0.00	
14920.50†	90.000	180.110	7173.10	8395.83	-7926.28	-2845.55	3233491.84	1236837.27	39.9804912	-104.6667839	0.00	
15020.50†	90.000	180.110	7173.10	8492.35	-8026.28	-2845.74	3233492.60	1236737.28	39.9802167	-104.6667845	0.00	
15120.50†	90.000	180.110	7173.10	8588.87	-8126.28	-2845.94	3233493.35	1236637.28	39.9799422	-104.6667851	0.00	
15220.50†	90.000	180.110	7173.10	8685.39	-8226.28	-2846.13	3233494.11	1236537.29	39.9796677	-104.6667858	0.00	
15320.50†	90.000	180.110	7173.10	8781.91	-8326.28	-2846.32	3233494.87	1236437.30	39.9793931	-104.6667864	0.00	
15420.50†	90.000	180.110	7173.10	8878.43	-8426.28	-2846.51	3233495.63	1236337.30	39.9791186	-104.6667871	0.00	
15520.50†	90.000	180.110	7173.10	8974.96	-8526.28	-2846.70	3233496.39	1236237.31	39.9788441	-104.6667877	0.00	
15620.50†	90.000	180.110	7173.10	9071.48	-8626.28	-2846.89	3233497.15	1236137.32	39.9785696	-104.6667883	0.00	
15720.50†	90.000	180.110	7173.10	9168.00	-8726.28	-2847.08	3233497.91	1236037.32	39.9782951	-104.6667890	0.00	
15820.50†	90.000	180.110	7173.10	9264.52	-8826.28	-2847.27	3233498.67	1235937.33	39.9780206	-104.6667896	0.00	
15920.50†	90.000	180.110	7173.10	9361.04	-8926.28	-2847.47	3233499.43	1235837.34	39.9777461	-104.6667903	0.00	
16020.50†	90.000	180.110	7173.10	9457.57	-9026.28	-2847.66	3233500.19	1235737.34	39.9774716	-104.6667909	0.00	
16120.50†	90.000	180.110	7173.10	9554.09	-9126.28	-2847.85	3233500.95	1235637.35	39.9771971	-104.6667915	0.00	
16220.50†	90.000	180.110	7173.10	9650.61	-9226.28	-2848.04	3233501.71	1235537.36	39.9769226	-104.6667922	0.00	
16320.50†	90.000	180.110	7173.10	9747.13	-9326.28	-2848.23	3233502.47	1235437.36	39.9766481	-104.6667928	0.00	
16420.50†	90.000	180.110	7173.10	9843.65	-9426.28	-2848.42	3233503.23	1235337.37	39.9763735	-104.6667935	0.00	
16520.50†	90.000	180.110	7173.10	9940.17	-9526.28	-2848.61	3233503.99	1235237.38	39.9760990	-104.6667941	0.00	
16620.50†	90.000	180.110	7173.10	10036.70	-9626.28	-2848.80	3233504.75	1235137.38	39.9758245	-104.6667948	0.00	
16720.50†	90.000	180.110	7173.10	10133.22	-9726.28	-2849.00	3233505.51	1235037.39	39.9755500	-104.6667954	0.00	
16820.50†	90.000	180.110	7173.10	10229.74	-9826.28	-2849.19	3233506.27	1234937.39	39.9752755	-104.6667960	0.00	
16920.50†	90.000	180.110	7173.10	10326.26	-9926.28	-2849.38	3233507.03	1234837.40	39.9750010	-104.6667967	0.00	
17020.50†	90.000	180.110	7173.10	10422.78	-10026.28	-2849.57	3233507.79	1234737.41	39.9747265	-104.6667973	0.00	
17120.50†	90.000	180.110	7173.10	10519.31	-10126.28	-2849.76	3233508.55	1234637.41	39.9744520	-104.6667980	0.00	
17220.50†	90.000	180.110	7173.10	10615.83	-10226.28	-2849.95	3233509.31	1234537.42	39.9741775	-104.6667986	0.00	
17320.50†	90.000	180.110	7173.10	10712.35	-10326.28	-2850.14	3233510.07	1234437.43	39.9739030	-104.6667992	0.00	
17420.50†	90.000	180.110	7173.10	10808.87	-10426.28	-2850.33	3233510.83	1234337.43	39.9736285	-104.6667999	0.00	

REFERENCE WELLPATH IDENTIFICATION

Operator	CONFLUENCE RESOURCES	Well	Desha 4-6-1L
Field	WELD COUNTY (NAD83, TRUE NORTH)	API/Legal	
Facility	SEC.34-T01N-R65W	Wellbore	Desha 4-6-1L PWB
Slot	SLOT#13 Desha 4-6-1L (620'FSL & 818'FWL,SEC.34)		

WELLPATH DATA (181 stations)

MD [ft]	Inclination [°]	Azimuth [°]	TVD [ft]	Vert Sect [ft]	North [ft]	East [ft]	Grid East [US ft]	Grid North [US ft]	Latitude	Longitude	DLS [°/100ft]	Comments
17438.15	90.000	180.110	7173.10 ²	10825.91	-10443.93	-2850.37	3233510.96	1234319.78	39.9735800	-104.6668000	0.00	TD

HOLE & CASING SECTIONS - Ref Wellbore: Desha 4-6-1L PWB Ref Wellpath: Desha 4-6-1L PWP Rev-A.0

String/Diameter	Start MD [ft]	End MD [ft]	Interval [ft]	Start TVD [ft]	End TVD [ft]	Start N/S [ft]	Start E/W [ft]	End N/S [ft]	End E/W [ft]
9.625in Casing Surface	20.50	1521.51	1501.01	20.50	1500.00	0.00	0.00	-40.94	-175.49

TARGETS

Name	MD [ft]	TVD [ft]	North [ft]	East [ft]	Grid East [US ft]	Grid North [US ft]	Latitude	Longitude	Shape
SEC.04-T01S-R65W	N/A	62.00	62.57	-5650.70	3230610.94	1244798.80	40.0024200	-104.6768000	polygon
2D Polygon: dimensions not calculated									
SEC.04/09-T01S-R65W 470' SETBACK	N/A	62.00	62.57	-5650.70	3230610.94	1244798.80	40.0024200	-104.6768000	polygon
2D Polygon: dimensions not calculated									
SEC.09-T01S-R65W	N/A	62.00	62.57	-5650.70	3230610.94	1244798.80	40.0024200	-104.6768000	polygon
2D Polygon: dimensions not calculated									
2) Desha 4-6-1L BHL REV-1 (470'FSL & 2037'FEL,SEC.09)	17438.15	7173.10	-10443.93	-2850.37	3233510.96	1234319.78	39.9735800	-104.6668000	point
1) Desha 4-6-1L LP REV-1 (470'FNL & 2037'FEL,SEC.04)	8086.90	7173.10	-1092.70	-2832.49	3233439.91	1243670.43	39.9992500	-104.6667400	point

SURVEY PROGRAM - Ref Wellbore: Desha 4-6-1L PWB Ref Wellpath: Desha 4-6-1L PWP Rev-A.0

Start MD [ft]	End MD [ft]	Positional Uncertainty Model	Log Name/Comment	Wellbore
20.50	1521.51	BH NaviTrak (2019) (Axial)		Desha 4-6-1L PWB
1521.51	17563.68	BH AutoTrak Curve/eXpress (2019) (Short spacing)		Desha 4-6-1L PWB

Planned Wellpath Report

Desha 4-6-1L PWP Rev-A.0

Page 7 of 7

REFERENCE WELLPATH IDENTIFICATION

Operator	CONFLUENCE RESOURCES	Well	Desha 4-6-1L
Field	WELD COUNTY (NAD83, TRUE NORTH)	API/Legal	
Facility	SEC.34-T01N-R65W	Wellbore	Desha 4-6-1L PWB
Slot	SLOT#13 Desha 4-6-1L (620'FSL & 818'FWL,SEC.34)		

DESIGN COMMENTS

MD [ft]	Inclination [°]	Azimuth [°]	TVD [ft]	Comment
20.50	0.000	256.867	20.50	Tie On
500.00	0.000	256.867	500.00	End of Tangent
1789.57	25.791	256.867	1746.46	Build (XS)
7384.57	25.791	256.867	6784.11	KOP
8086.90	90.000	180.110	7173.10	LANDING
17438.15	90.000	180.110	7173.10	TD