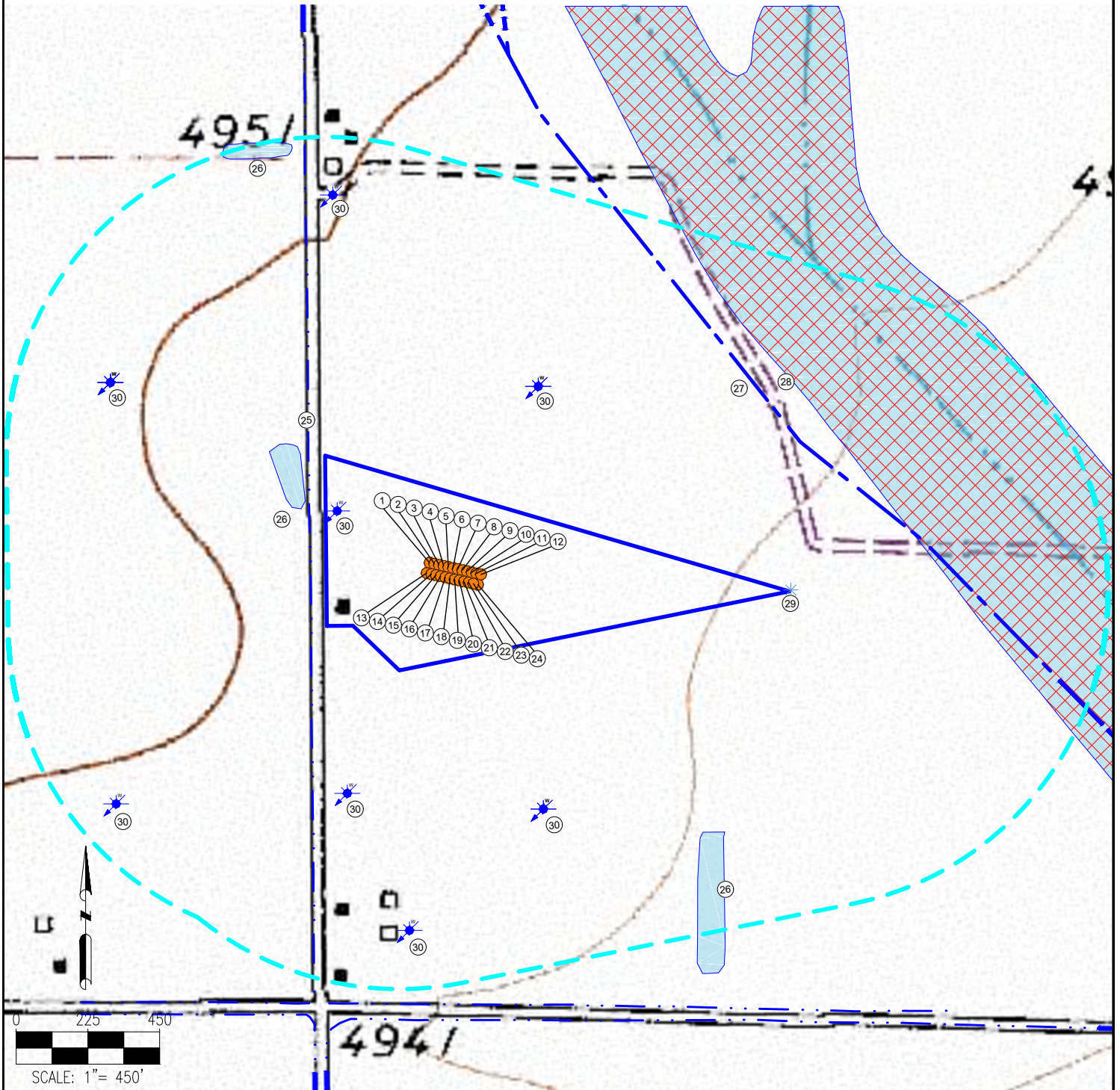


TOPAZ 6-I PAD HYDROLOGY MAP



MEASUREMENTS ARE MADE FROM THE NEAREST EDGE OF THE DISTURBANCE AREA.

- | | | | |
|------------|--------------|--------------|---|
| 1. TOPAZ 1 | 8. TOPAZ 8 | 15. TOPAZ 15 | 22. TOPAZ 22 |
| 2. TOPAZ 2 | 9. TOPAZ 9 | 16. TOPAZ 16 | 23. TOPAZ 23 |
| 3. TOPAZ 3 | 10. TOPAZ 10 | 17. TOPAZ 17 | 24. TOPAZ 24 |
| 4. TOPAZ 4 | 11. TOPAZ 11 | 18. TOPAZ 18 | 25. DITCH IS $\pm 47'$ W |
| 5. TOPAZ 5 | 12. TOPAZ 12 | 19. TOPAZ 19 | 26. PONDS ARE $\pm 60'$ W, $\pm 686'$ SE, $\pm 946'$ NW |
| 6. TOPAZ 6 | 13. TOPAZ 13 | 20. TOPAZ 20 | 27. SPRING CREEK STREAM IS $\pm 562'$ NE |
| 7. TOPAZ 7 | 14. TOPAZ 14 | 21. TOPAZ 21 | 28. FLOODPLAIN IS $\pm 663'$ NE |

29. PIVOT POINT IS $\pm 412'$ E
 30. WATER WELLS (MAPPED LOCATIONS) ARE $\pm 0'$, $\pm 396'$ N,
 $\pm 419'$ S, $\pm 516'$ S, $\pm 711'$ NW, $\pm 816'$ S, $\pm 818'$ N, $\pm 865'$ SW

*WATER WELL LOCATIONS HAVE NOT BEEN FIELD VERIFIED.
 THEY ARE BASED OFF OF MAPPED GIS LOCATIONS.

LEGEND:

- = PROPOSED WELL
- ★ = PIVOT POINT
- ★ = WATER WELL

- = STREAM
- = 1000' RADIUS
- = PROPOSED DISTURBANCE AREA
- = DITCH
- = FLOODPLAIN

= POND

DISCLAIMER:
 THIS PLOT DOES NOT REPRESENT A MONUMENTED LAND SURVEY AND
 SHOULD NOT BE RELIED UPON TO DETERMINE BOUNDARY LINES, PROPERTY
 OWNERSHIP OR OTHER PROPERTY INTERESTS. PARCEL LINES, IF DEPICTED
 HAVE NOT BEEN FIELD VERIFIED AND MAY BE BASED UPON PUBLICLY
 AVAILABLE DATA THAT ALSO HAS NOT BEEN INDEPENDENTLY VERIFIED.

DATA SOURCE:
 TOPO MAP: USGS
 NHD: USGS
 WATER WELLS: COLORADO DWR

PUBLICLY AVAILABLE DATA SOURCES HAVE NOT BEEN
 INDEPENDENTLY VERIFIED BY ASCENT.