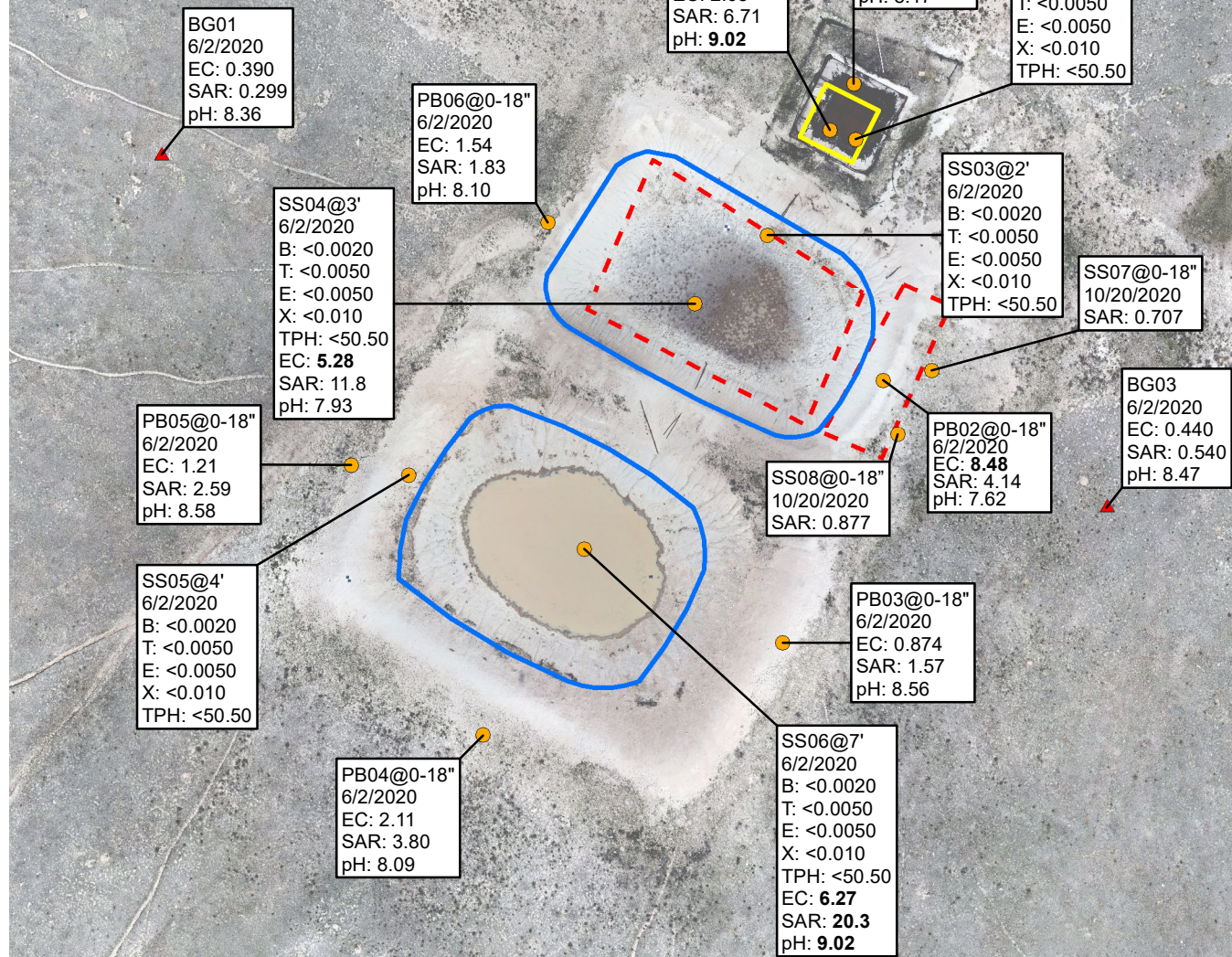


SAMPLE ID @ DEPTH BELOW SURFACE
 SAMPLE DATE
 B: BENZENE (mg/kg)
 T: TOLUENE (mg/kg)
 E: ETHYLBENZENE (mg/kg)
 X: TOTAL XYLENES (mg/kg)
 TPH: TOTAL PETROLEUM HYDROCARBONS (mg/kg)
 EC: ELECTRICAL CONDUCTIVITY IN MILLIMHOS
 PER CENTIMETER (MMHOS/CM)
 SAR: SODIUM ADSORPTION RATIO (UNITLESS)
 pH: pH (UNITLESS)
 <: INDICATES RESULT IS LESS THAN THE LABORATORY
 REPORTING LIMIT
BOLD: INDICATES RESULT EXCEEDS THE
 APPLICABLE STANDARD



LEGEND

- SOIL SAMPLE
- BACKGROUND SOIL SAMPLE
- SKIM PIT
- WATER PIT
- EXCAVATION EXTENT

NOTE: SAMPLE ID PB INDICATES SAMPLE WAS
 COLLECTED FROM BENEATH THE PIT BERM.

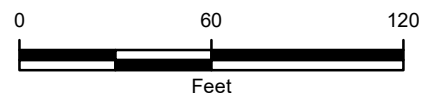


FIGURE 1
 SOIL ANALYTICAL RESULTS
 COLORADO ENERGY FEDERAL 14-1, 2A, AND 1A
 NENE SEC 15-T10N-R64W
 WELD COUNTY, COLORADO
HIGHPOINT RESOURCES

