



Magnum Cementing Services LLC LLC
600 17th Street, Ste 2800S
Denver, Colorado 80202

Field Ticket

Job Date: October 17, 2020
Job Number: JOB00088907

Bill To:
PDC Energy
PO Box 26

Bridgeport , West Virginia
26330

UWI: Monfort-Bostrom 1
Surface: NWNW Sec30 T6N R65W
Pricing Area: Area 1
Competitive: CHYN
Depth: 6700
Job Type: Balanced Plug

	Units	Per	Unit Price	Cost
Services and Equipment				
PCMP Unit Travel	50	MI	\$4.88	\$244.00
PCMP - Primary Set Up (6 Hr min)	1	FT	\$2,971.50	\$2,971.50
PCMP-Q Add Time: Operating	23	HR	\$395.00	\$9,085.00
Add Time: Bulk	17	HR	\$155.00	\$2,635.00
Equipment				
MDAC	1	Job	\$0.00	N/C
Communication Headsets	2	RDIO	\$0.00	N/C
Material Handling & Delivery				
Bulk Material Blending	1,476.93	SKS	\$1.43	\$2,112.01
Bulk Minimum Delivery Charge	73,846.5	Job	\$0.04	\$2,953.86
Products & Materials				
MCA-1	305.37	LB	\$0.80	\$244.30
MCA-1	269.7	LB	\$0.80	\$215.76
MCFL-10	135.36	LB	\$8.02	\$1,085.59
MCFL-10	270.72	LB	\$8.02	\$2,171.17
MCR-1	22.56	LB	\$1.82	\$41.06
MCR-1	112.8	LB	\$1.82	\$205.30
MCDF-P	30.54	LB	\$6.20	\$189.35
MCDF-P	27	LB	\$6.20	\$167.40
MCDF-L	3	GAL	\$37.72	\$113.16
MCDF-L	2.5	GAL	\$37.72	\$94.30
MCDF-L	2	GAL	\$37.72	\$75.44
MCDF-L	4	GAL	\$37.72	\$150.88
MAG G 15.8	240	SKS	\$14.41	\$3,458.40
MAG G 15.8	480	SKS	\$14.41	\$6,916.80
MAG S 14.1	351	SKS	\$13.12	\$4,605.12
MAG S 14.1	310	SKS	\$13.12	\$4,067.20

Customer Stamp:

Total \$46,497.08

SERVICES PROVIDED BY MAGNUM CEMENTING SERVICES LTD. ARE GOVERNED BY AND SUBJECT TO THE ATTACHED TERMS AND CONDITIONS.

Received By: Bud Holman 970.301.3897
Comments:

All totals are estimated (including mileage), and are subject to change depending on actual amounts used. Applicable taxes will be added to the invoice. Prices may change without notice due to fluctuating market conditions. Prices are in effect for 30 days from date shown.



US Treatment Report

Customer: PDC Energy
Rep: Bud Holman
Supervisor: Darren Woytenko
Job Type: US Remedial
 Balanced Plug

Rig: Ensign 354
Well: Monfort-Bostrom 1
UWI: Monfort-Bostrom 1
Surface: NWNW Sec30 T6N
 R65W

Job #: JOB00088907
Job Date: Oct 17 @ 00:00
Time Requested: Oct 17 @ 10:00
Time Arrived: Oct 17 @ 10:20
Time Released: Oct 18 @ 15:00

480 sk MAG G 15.8 + 0.60% MCFL-10 + 0.40% MCR-1

Yield: 1.14 ft³/sk = 97.46bbls Mix Water: 4.97 gal/sk = 2385.6gal

240 sk MAG G 15.8 + 0.60% MCFL-10 + 0.10% MCR-1

Yield: 1.14ft³/sack = 48.73bbls Mix Water: 4.97gal/sack = 1192.8gal

310 sk MAG S 14.1 + 1.00% MCA-1 + 0.10% MCDF-P

Yield: 1.28ft³/sack = 70.67bbls Mix Water: 5.89gal/sack = 1825.9gal

433 sk MAG S 14.1 + 1.00% MCA-1 + 0.10% MCDF-P

Yield: 1.28ft³/sack = 98.71bbls Mix Water: 5.89gal/sack = 2550.37gal

Casing 1 Casing Size (in)	8.625	Casing 1 Weight (lb/ft)	24	Hole Size (in)	10
Max Pressure (psi)	1500	Mud Type	WBM	TMD (ft)	6693
Tubing (in)	2.875	Tubing Grade	PH6	Tubing Length (ft)	6999
Tubing WT (lb/ft)	7.9				

Treatment Info: Sacks Used: 0 Sacks Not Used: 0

Preflush: 25bbls Fresh Water & 40bbls Fresh Water

Displace: 26bbls Fresh Water

Circulation Time: 5
 Slurry Temp: Bulk Sample: No
 Water Temp: 60 Water Sample: No
 Bulk Temp: 50 Slurry Sample: Yes
 Slurry Returns: 0 Plug Bumped: No Pump Out Lines: No Float Held: No

Time	Pressure psi	Annular Pressure psi	Volume Per Stage bbls	Total Stage Volume bbls	Rate bbls/mi n	Treatment Detail
10:20	0.00					Arrive on Location
11:10	0.00					Safety Meeting
11:21	850.00		25		2	Attain Circulation to Surface - Fresh Water
11:33	1,990.00					Start Pressure Test
11:35	0.00					Batch Up Slurry - MAG G 15.8 + Adds @ 15.8ppg
11:38	850.00		48.7		4	Pump Slurry - MAG G 15.8 + Adds @ 15.8ppg
11:54	110.00		11		4	Displace - Fresh Water
11:57	22.00					Stop Pumping
11:58	0.00		7			Use Pressurizer to displace fresh water

12:00	50.00		6		3	Displace - Fresh Water
12:02	50.00					Stop Pumping
12:03	0.00		2			Use Pressurizer to displace fresh water
20:19	1,050.00		40		2.5	Pump Preflush - Fresh Water
20:43	1,000.00		48.7		3.9	Pump Slurry - MAG G 15.8 + Adds @ 15.8ppg - increased rate from 2.5 - 3.9 during mixing
20:57	150.00		28		3.9	Displace - Fresh Water
21:06	110.00					Stop Pumping
02:56	600.00		20		3	Pump Preflush - Fresh Water
03:05	700.00		48.7		4	Pump Slurry - MAG G 15.8 + Adds @ 15.8ppg
03:16	225.00		15.5		3.5	Displace - Fresh Water
03:23	100.00					Stop Pumping
08:20	380.00		20		4	Pump Preflush - Fresh Water
08:26	425.00		70.7		4	Pump Slurry - MAG S 14.1 + Adds @ 14.1ppg
08:45	300.00		5.1		3.6	Displace - Fresh Water
08:47	0.00					Stop Pumping
13:13	260.00		20			Pump Preflush - Fresh Water
13:20	200.00		53			Pump Slurry - MAG S 14.1 + Adds @ 14.1ppg
13:33	110.00					Stop Pumping - Swap lines from tbg to wellhead
13:35	70.00		17			Pump Slurry - MAG S + Adds @ 14.1ppg
13:39	0.00			70		Stop Pumping -
14:05	0.00		10			Use Pressurizer to fill hole from surface
14:45	0.00					Wash Up Truck
15:00	0.00					Rig Out
15:30	0.00					Leave Location



Customer: **PDC**

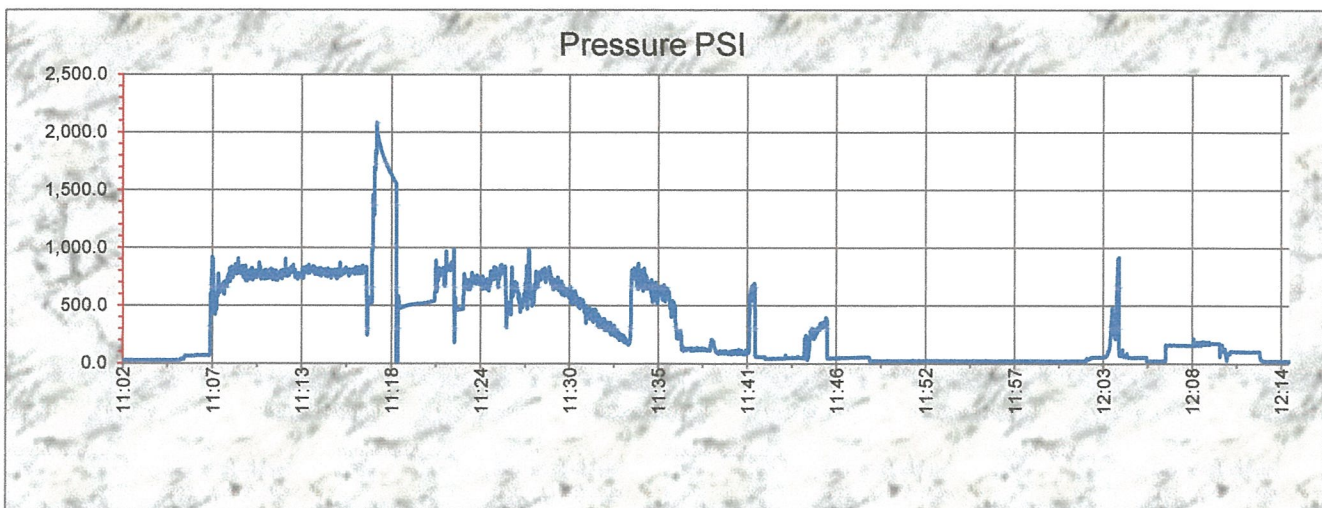
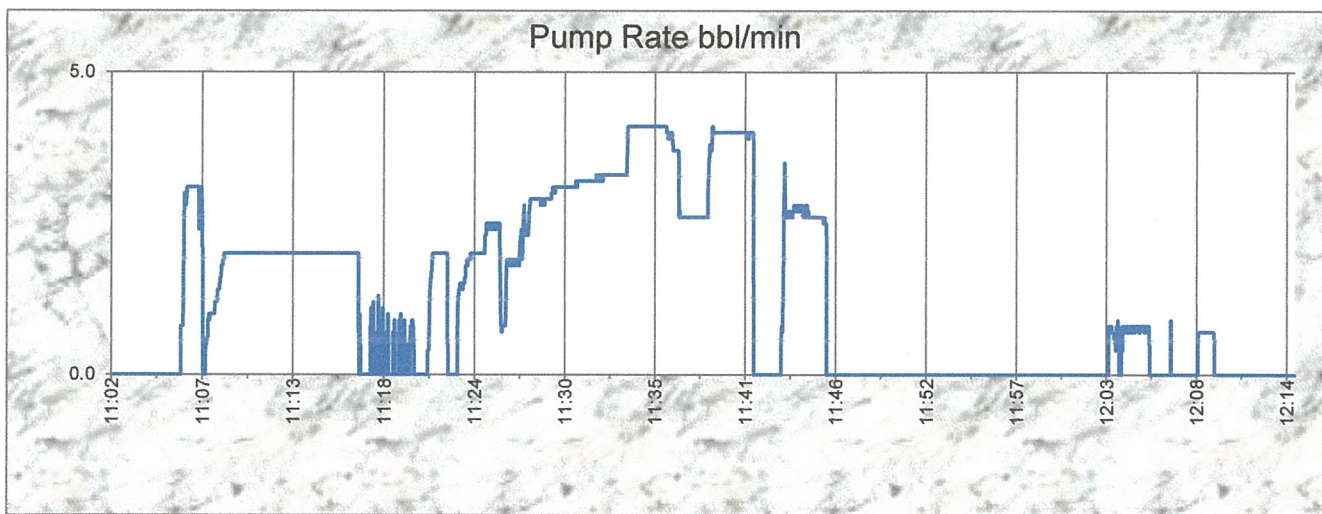
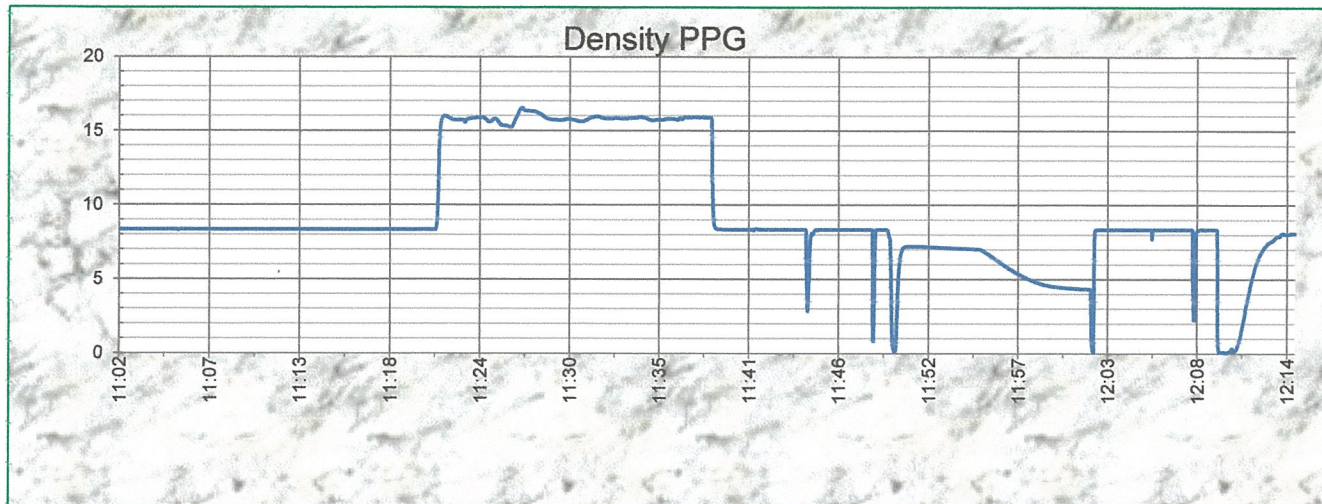
Job Date October 17 2020

Location: Monfort-Bostrom 1

Well name Monfort-Bostrom 1

Job type: Balanced Plug 1

Ticket: 88907





Customer: **PDC**

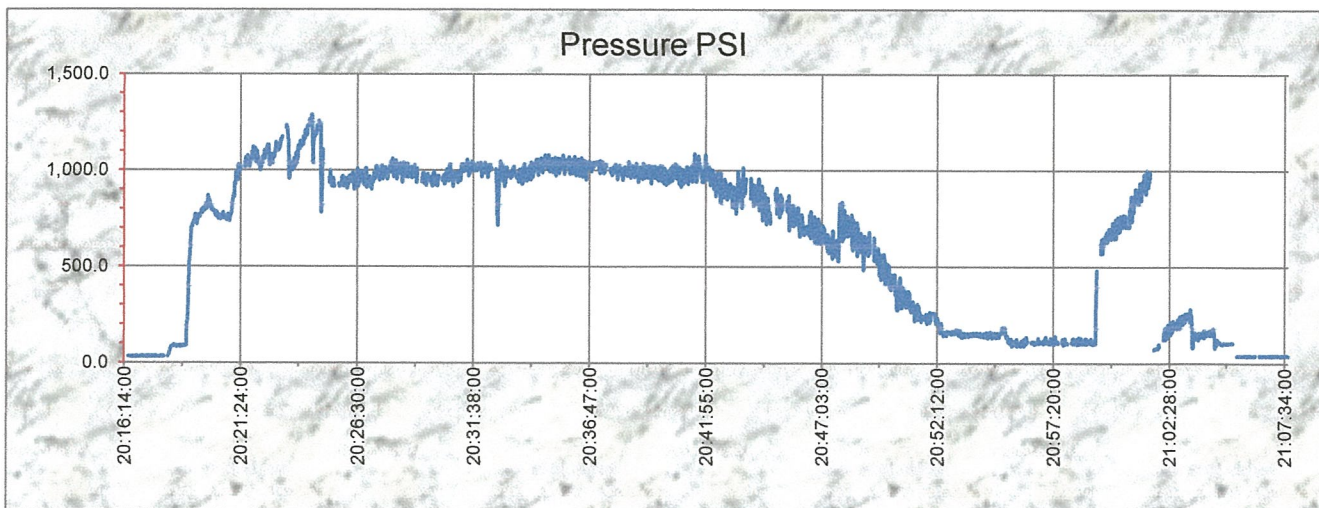
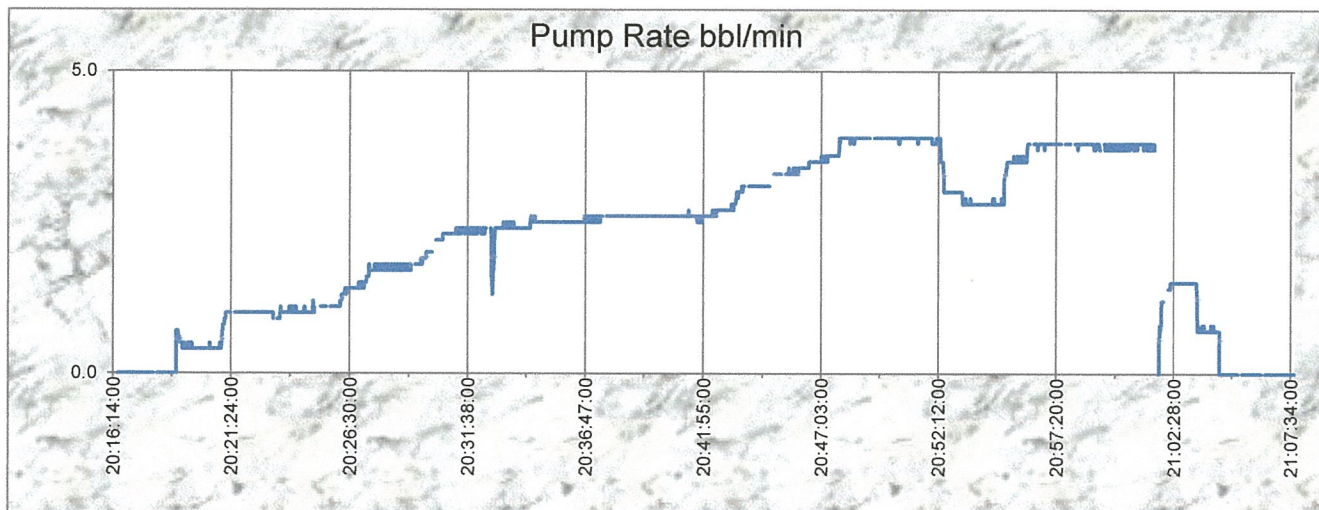
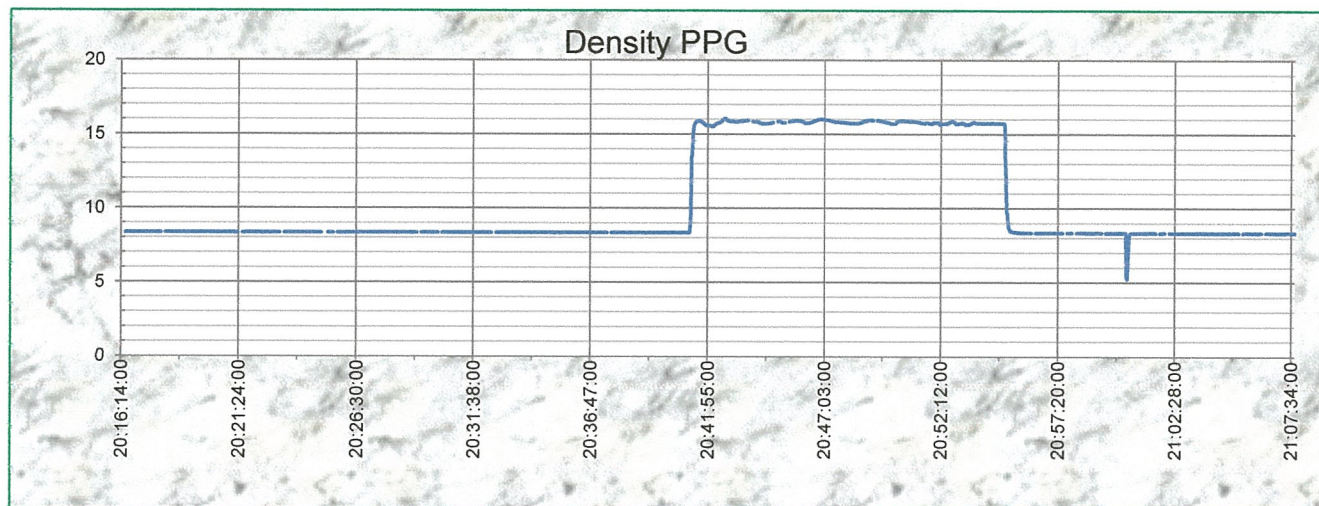
Job Date October 17 2020

Location: Monfort-Bostrom 1

Well name Monfort-Bostrom 1

Job type: Balanced Plug 1a

Ticket: 88907





Customer: **PDC**

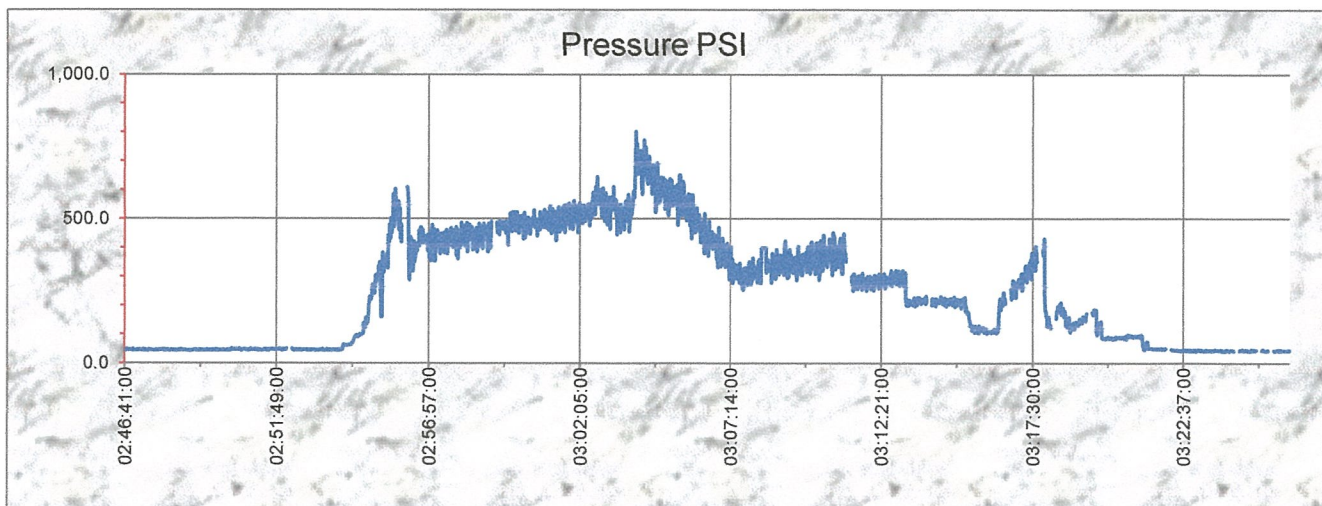
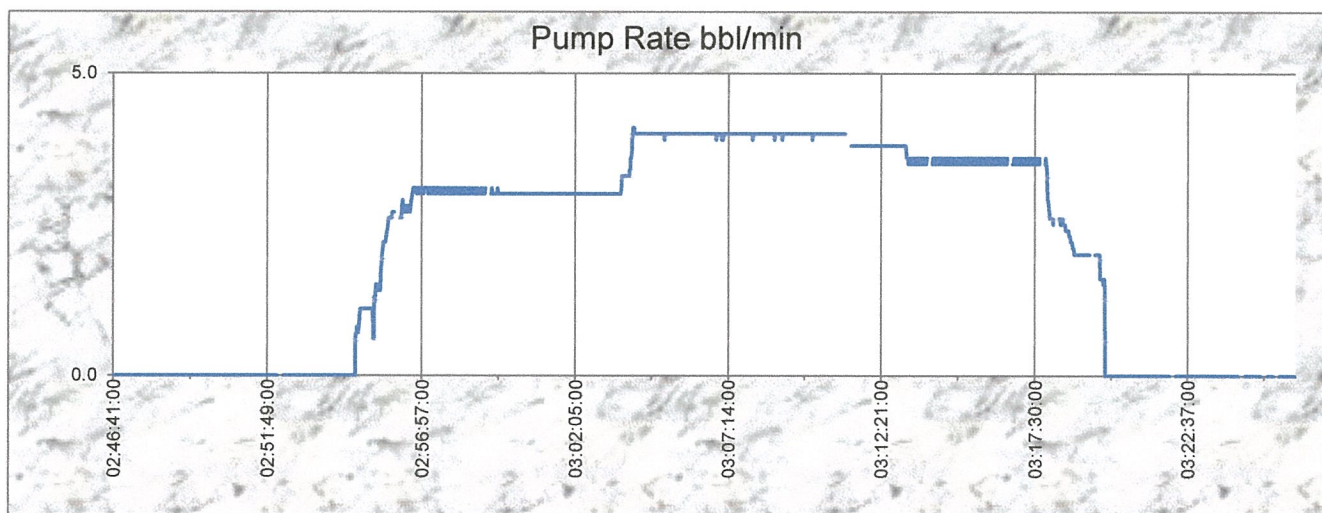
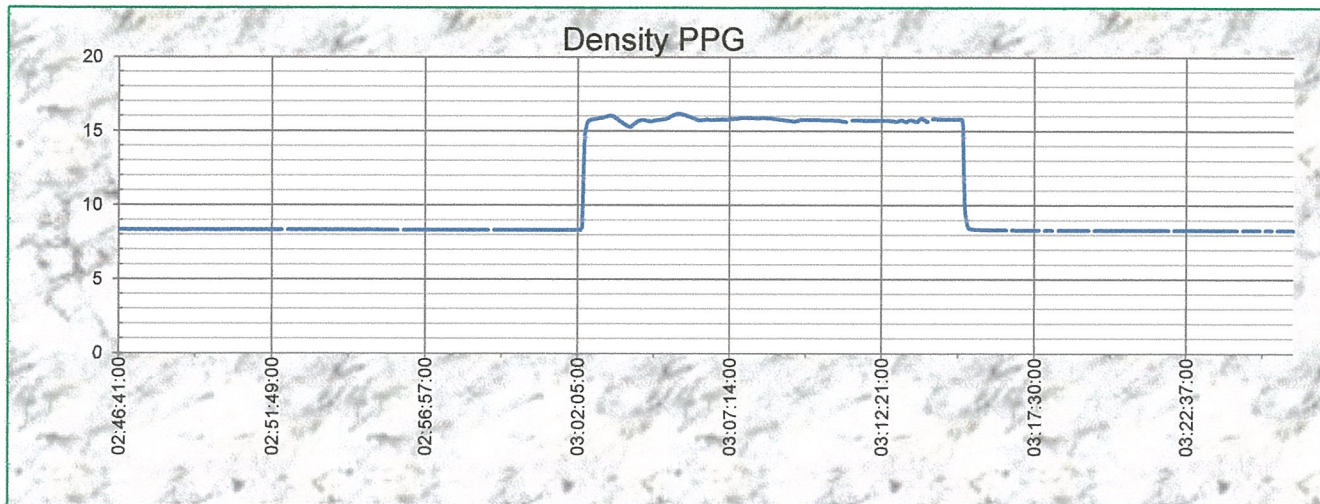
Job Date October 17 2020

Location: Monfort-Bostrom 1

Well name Monfort-Bostrom 1

Job type: Balnaced Plug p2

Ticket: 88907





Customer: **PDC**

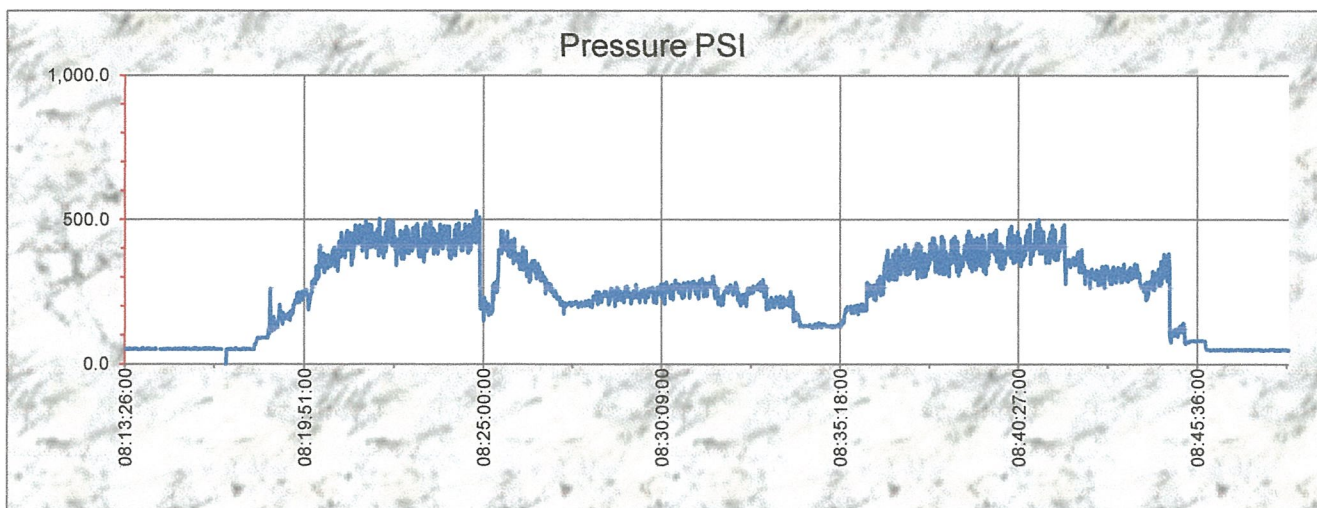
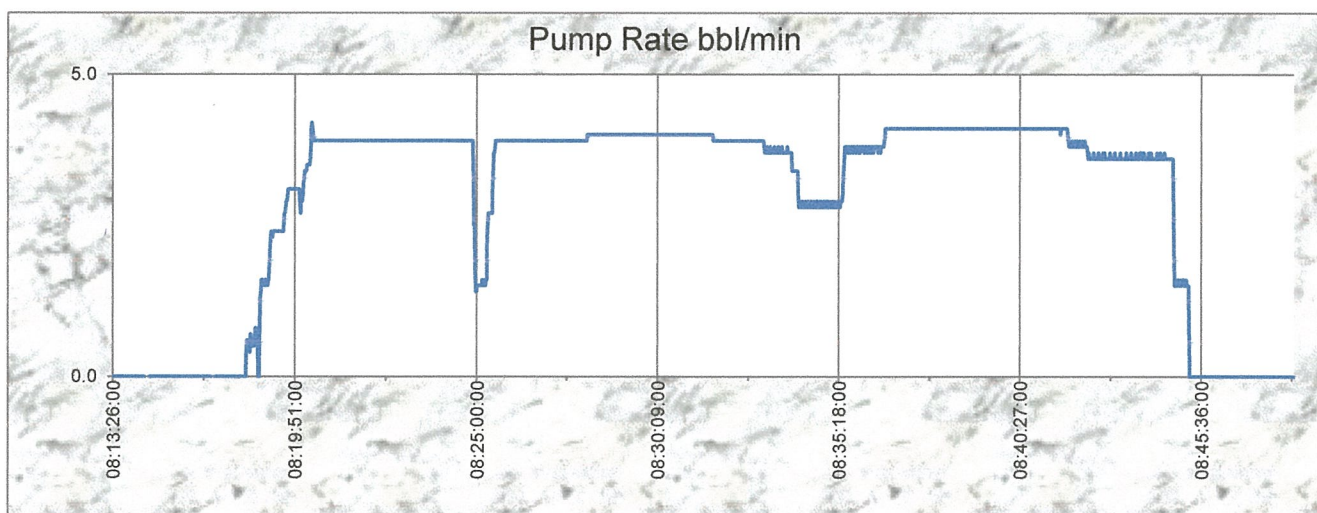
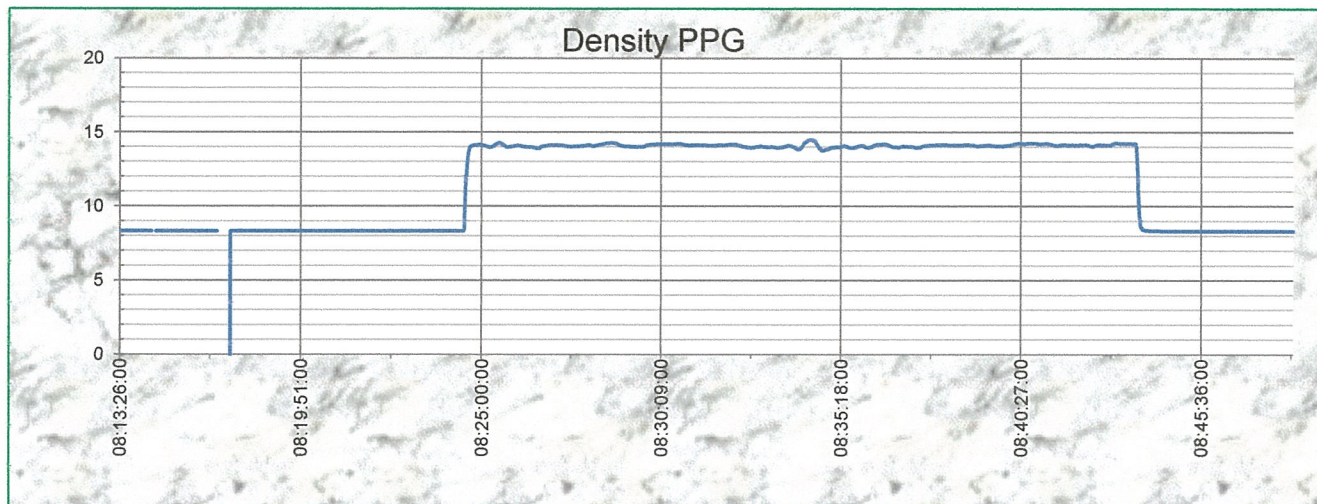
Job Date October 18 2020

Location: Monfort-Bostrom 1

Well name Monfort-Bostrom 1

Job type: Balnaced Plug p3

Ticket: 88907





Customer: **PDC**

Job Date October 18 2020

Location: Monfort-Bostrom 1

Well name Monfort-Bostrom 1

Job type: Balnaced Plug p4

Ticket: 88907

