



Kerr-McGee Oil & Gas Onshore LP

1099 18th Street
Denver, CO 80202
720-929-6000

September 30, 2020

Julie Murphy
Director, Colorado Oil and Gas Conservation Commission
Department of Natural Resources – The Chancery Building
1120 Lincoln Street, Suite 801
Denver, CO 80203

Re: **30 Day Certification Letter - 318A.e**
SCHLAGEL 5-5HZ (Doc No. 402496708)
Township 3 North, Range 67 West
Section 5: NWSE
Unit Acreage: 640 Acres
Proposed Spacing Unit:

03N 67W SEC 05: S2;
03N 67W SEC 06: S2

Weld County, Colorado

Dear Director Murphy:

Kerr-McGee Oil and Gas Onshore LP (“KMG”) hereby certifies that a thirty (30) day notice has been given by certified mail to all mineral owners in the proposed wellbore spacing unit. We have not received any objections to such well location, proposed spacing unit, or additional producing formation. KMG hereby respectfully requests approval of this boundary well.

If you have any questions or issues regarding this permit, please contact me at (720) 929-3167.

Sincerely,

Kerr-McGee Oil and Gas Onshore LP

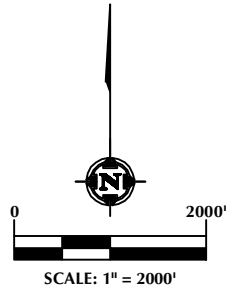
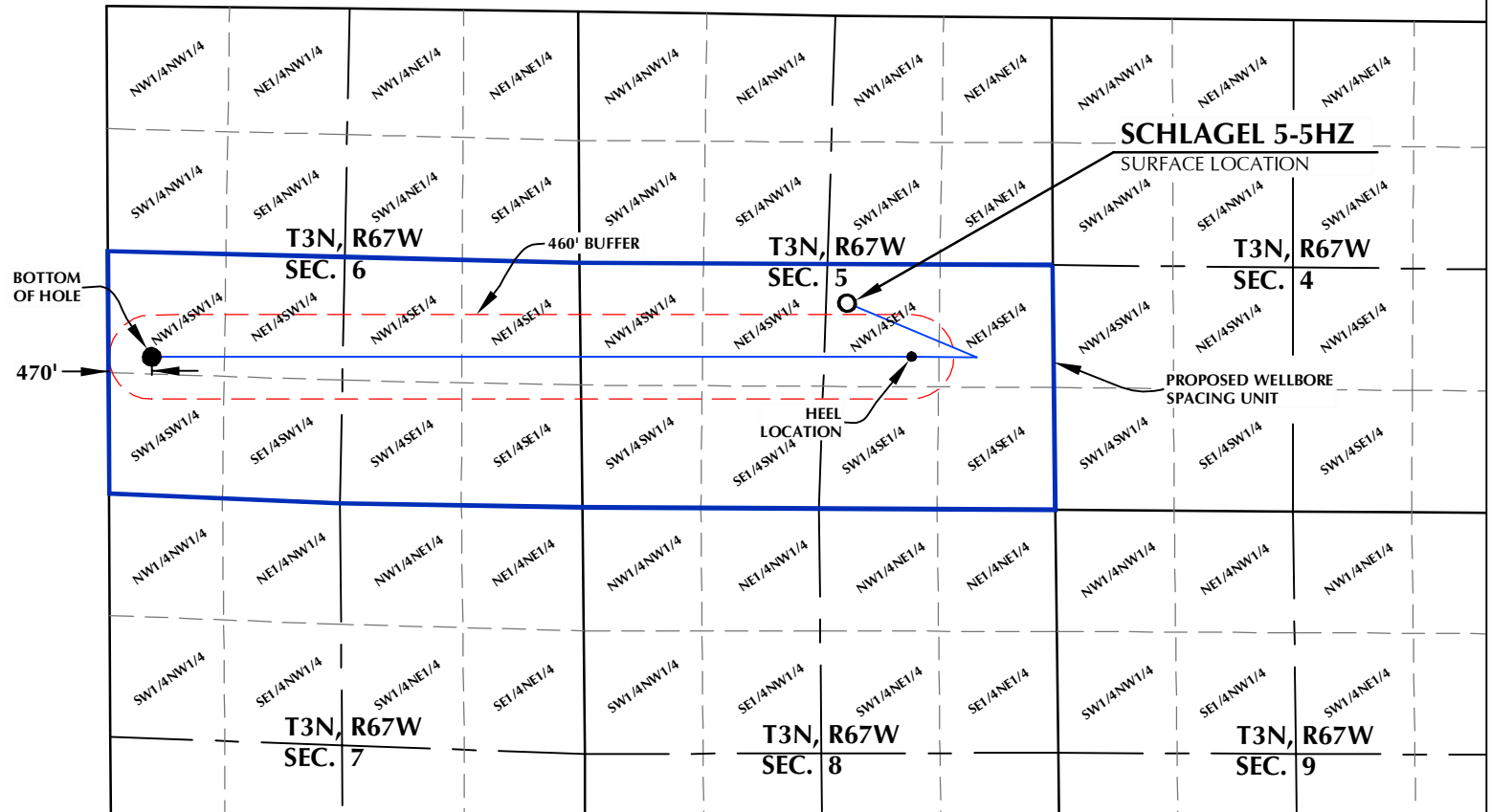
A handwritten signature in black ink that reads 'Samantha Petite'.

Samantha Petite
Regulatory Analyst

Enclosure

DISTANCE FROM COMPLETED
PORTION OF WELLBORE TO
NEAREST UNIT BOUNDARY= 470'

SCHLAGEL 5-5HZ WELLBORE SPACING UNIT



SURFACE LOCATION: NAD 83
GROUND ELEVATION= 4871.7'
LATITUDE= 40.253815°
LONGITUDE= -104.912913°
LATITUDE= 40°15'13.734"
LONGITUDE= -104°54'46.485"
HEEL LOCATION: NAD 83
LATITUDE= 40.252203°
LONGITUDE= -104.910410°
LATITUDE= 40°15'07.931"
LONGITUDE= -104°54'37.476"
BOTTOM HOLE LOCATION: NAD 83
LATITUDE= 40.252339°
LONGITUDE= -104.940046°
LATITUDE= 40°15'08.420"
LONGITUDE= -104°56'24.166"

WELL PAD - SCHLAGEL 10-5HZ

SCHLAGEL 5-5HZ
WELLBORE SPACING UNIT
2238' FSL & 2242' FEL (NWSE) (SURFACE)
1659' FSL & 1546' FEL (NWSE) (HEEL)
LOCATED IN SECTION 5
1505' FSL & 470' FWL LOT 2 (NWSW) (BOTTOM)
LOCATED IN SECTION 6
T3N, R67W, 6TH P.M.
WELD COUNTY, COLORADO

**Kerr-McGee Oil &
Gas Onshore L.P.**
1099 18th Street
Denver, Colorado 80202



CONSULTING, LLC

SHERIDAN OFFICE
1095 Saberton Avenue
Sheridan, Wyoming 82801
Phone 307-674-0609

LOVELAND OFFICE
6706 North Franklin Avenue
Loveland, Colorado 80538
Phone 970-776-4331

DRAFTED BY:	LMO	CHECKED BY:	RKF
DATE DRAFTED:	6/11/2020	DATE SURVEYED:	5/5/2020
REVISED:		FILE NAME:	19-78

NOTES:

- DRAWING LATITUDE AND LONGITUDE COORDINATES ARE NAD 83 (2011)(EPOCH:2010). ELEVATION BASED ON NAVD88 (GEOID12B).
- BASIS OF BEARING DERIVED FROM COLORADO COORDINATE SYSTEM OF 1983 NORTH ZONE.
- ALL MEASURED DISTANCES ARE GRID. COMBINED SCALE FACTOR: .99972640 CALCULATED FROM THE CENTER 1/4 CORNER OF SECTION 5, T3N, R67W.