

Inspection Photos
Location Name: Silverton 4 North
Location ID: 458676



Photo #1 Location



Photo #2 Drilling/Rig sign



Inspection Photos
Location Name: Silverton 4 North
Location ID: 458676

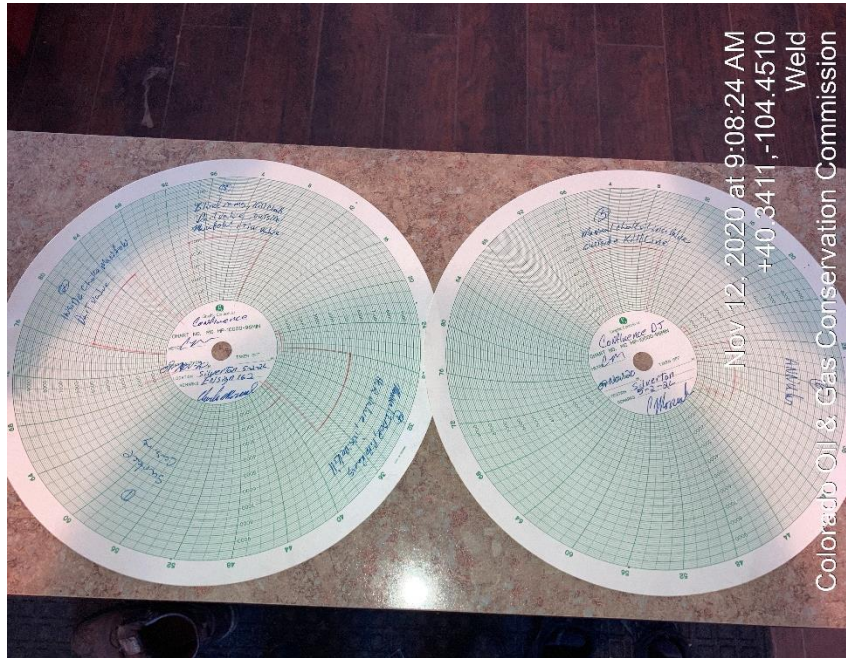


Photo #3 BOP Test Charts

09-Nov-20 Confluence DJ LLC Ensign 162 Silverton 5-2-2L
Pathfinder Pressure Testing

Accumulator Function Test

TO CHECK THE USABLE FLUID STORED IN THE ACCUMULATOR BOTTLES ON THE ACCUMULATOR (O.O. #2 section III.A.2.d.1. or II or III)

1. Make sure all tanks and annular are open and if applicable HCR is closed.
2. Ensure accumulator is pumped up to working pressure! (Shut off all pumps)
3. Open HCR Valve. (If applicable)
4. Close annular.
5. Close all pipe rams.
6. Open one set of the pipe rams to simulate closing the blind ram.
7. If you have a 3 ram stick open the annular to achieve the 50% safety factor for SM and greater systems.
8. Accumulator pressure should be 200 psi over desired precharge pressure. (Accumulator working pressure (1500 psi - 750 desired psi) (2000 and 3000 psi - 1000 desired psi)). Record the remaining pressure _____ psi.

If annular is closed, open it at this time and close HCR.

TO CHECK THE CAPACITY OF THE ACCUMULATOR PUMPS (O.O. #2 section III.A.2.d.)

Shut the accumulator bottles or spherical. (isolate them from the pumps & manifold)

open the bleed off valve to the tank/ manifold psi should go to 0 psi close bleed valve.

NOTE: Make sure that the HCR is fully closed and the annular is fully open prior to going through the next steps.

1. Open the HCR valve handle. (if applicable)
2. Close annular valve handle.
3. With pumps only, time how long it takes to regain manifold pressure to 200 psi over desired precharge pressure! (Accumulator working pressure (1500 psi - 750 desired psi) (2000 and 3000 psi - 1000 desired psi)).

Record elapsed time _____ seconds (2 minutes or less)

TO CHECK THE PRECHARGE ON BOTTLES OR SPHERICAL (O.O. #2 section III.A.2.d.)

1. Open bottles back up to the manifold (pressure should be above the desired precharge pressure. (1500 psi - 750 desired psi) (2000 and 3000 psi - 1000 desired psi)) may need to use pumps to pressure back up.
2. With power to pumps shut off open bleed line to the tank.
3. Watch and record where the pressure drops. (accumulator psi).

Record the pressure drop _____ psi.

If pressure drops below MINIMUM precharge. (Accumulator working pressure (1500 psi - 700 min.) (2000 and 3000psi - 900 psi min.)) each bottle shall be independently rechecked with a gauge.

Pathfinder Pressure Testing
Date: 11-09-2020
Company: Confluence DJ LLC
Rig: Ensign 162
Well Name: Silverton 5-2-2L

Oxy Short Test

JSA

Test 1-Casting
1500 Psi / 30 Mins

Test 2 - Inside Choke manifold, Dart Valve
250 Psi / 5 Mins - 5000 Psi / 10 Mins

Test 3: Blind Rams, Kill Check, Dart, Outside Choke Manifold
250 Psi / 5 Min - 5000 Psi / 10 Min

Test 4: Manual IBOP, Pipe Rams, HCR Valve, Inside Kill Valve
250 PSI / 5 Min - 5000 PSI / 10 Min

Test 5: Manual Choke Valve, Outside Kill Valve
250 PSI / 5 Min - 5000 PSI / 10 Min

Test 6: Annular, Inside Choke Manifold, Kill Check
250 PSI / 5 Min - 2500 PSI / 10 Min

Page 1

Nov 12, 2020 at 9:08:51 AM
+40.3411, -104.4510
Weld
Colorado Oil & Gas Conservation Commission

Photo #4 BOP Test



Inspection Photos Location Name: Silverton 4 North Location ID: 458676

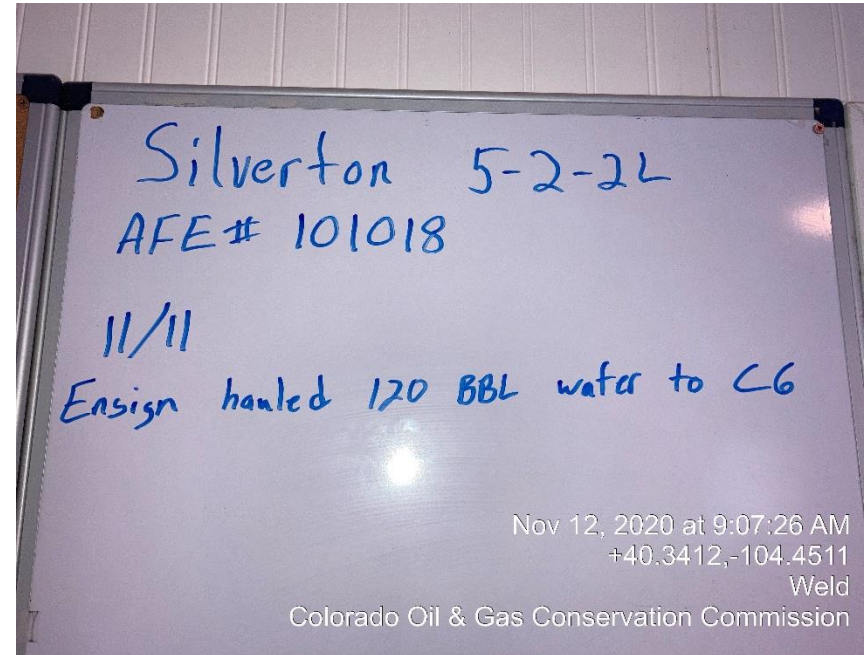
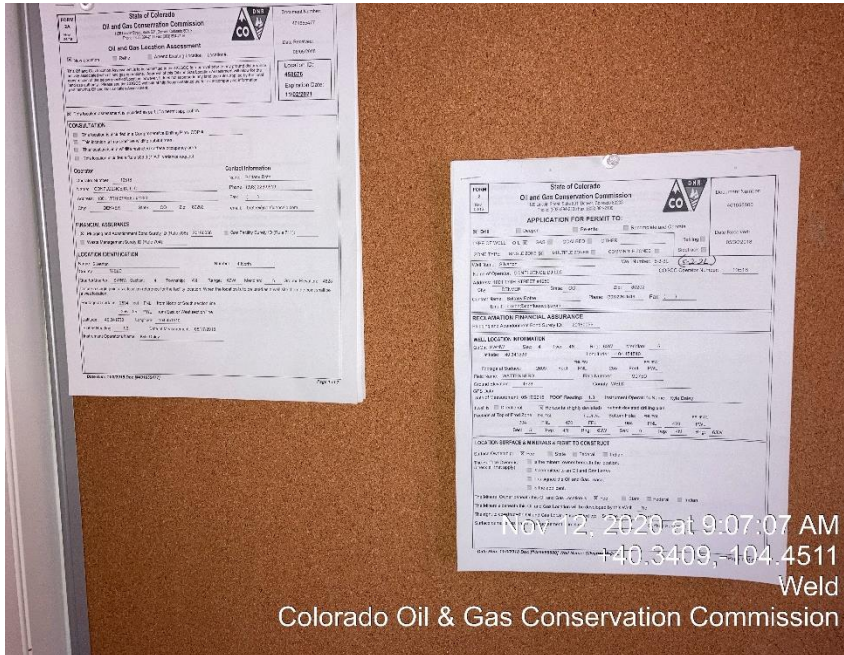


Photo #5 Drilling Permits

Photo #6 Current Well