

CONFLUENCE RESOURCES

Location: COLORADO Slot: SLOT#05 BUFORD 33-4-2L (770'FSL & 844'FWL, SEC. 34)

Field: WELD COUNTY (NAD83, TRUE NORTH) Well: BUFORD 33-4-2L

Facility: SEC.34-T01N-R65W Wellbore: BUFORD 33-4-2L PWB

Plot reference wellpath is BUFORD 33-4-2L (REV-A.0) PWP

True vertical depths are referenced to RIG (20.5') (RKB)

Reference wellpath measured depths are referenced to RIG (20.5') (RKB)

RIG (20.5') (RKB) to Mean Sea Level: 5157.5 feet

Mean Sea Level to Mud line (At Slot: SLOT#05 BUFORD 33-4-2L (770'FSL & 844'FWL, SEC. 34)): 0 feet

Offset wellpath MDs are referenced to each path's default MD datum

Grid System: NAD83 / Lambert Colorado SP, Northern Zone (501), US feet

North Reference: True north

Scale: True distance

Coordinates are in feet referenced to Slot

Depths are in feet

Created by: adiamkat on 2020-01-27; Database: Denver

Location Information

Facility Name	Grid East (US ft)	Grid North (US ft)	Latitude	Longitude
SEC.34-T01N-R65W	3236186.141	1244789.256	40°00'8.1000"N	104°39'24.8400"W
Slot	Local N (ft)	Local E (ft)	Grid East (US ft)	Grid North (US ft)
SLOT#05 BUFORD 33-4-2L (770'FSL & 844'FWL, SEC. 34)	149.36	100.85	3236285.568	1244939.561
RIG (20.5') (RKB) to Mud line (At Slot: SLOT#05 BUFORD 33-4-2L (770'FSL & 844'FWL, SEC. 34))				5157.5ft
Mean Sea Level to Mud line (At Slot: SLOT#05 BUFORD 33-4-2L (770'FSL & 844'FWL, SEC. 34))				0ft
RIG (20.5') (RKB) to Mean Sea Level				5157.5ft

Targets

Name	MD (ft)	TVD (ft)	Local N (ft)	Local E (ft)	Grid East (US ft)	Grid North (US ft)	Latitude	Longitude
SEC 28-T01N-R65W	N/A	1.00	0.00	-75.64	3236209.93	1244938.84	40°00'9.5760"N	104°39'24.5160"W
SEC 33-T01N-R65W	N/A	1.00	0.00	-75.64	3236209.93	1244938.84	40°00'9.5760"N	104°39'24.5160"W
SEC 34-T01N-R65W	N/A	1.00	0.00	-75.64	3236209.93	1244938.84	40°00'9.5760"N	104°39'24.5160"W
BUFORD 33-4-2L BHL REV-1 (470'FNL & 1877'FEL, SEC. 28)	17863.32	7332.50	9358.70	-2733.26	3233463.52	1254271.50	40°01'42.0600"N	104°39'58.6800"W
BUFORD 33-4-2L LP REV-1 (470'FSL & 1877'FEL, SEC. 33)	8202.40	7332.50	-302.21	-2717.51	3233571.15	1244611.53	40°00'5.5880"N	104°39'58.4640"W

Tie-On Position

MD (ft)	Inc (")	Az (")	TVD (ft)	Local N (ft)	Local E (ft)	Grid East (US ft)	Grid North (US ft)	Latitude	Longitude
20.50	0.000	252.773	20.50	0.00	0.00	3236285.57	1244939.56	40°00'9.5760"N	104°39'23.5440"W

Bottom Hole Location

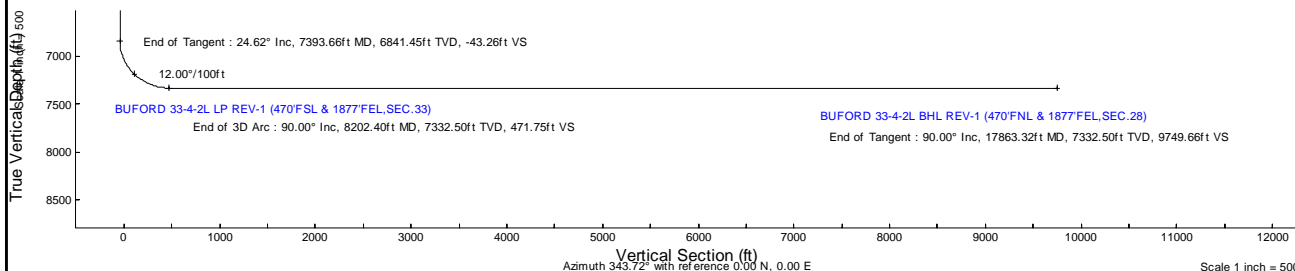
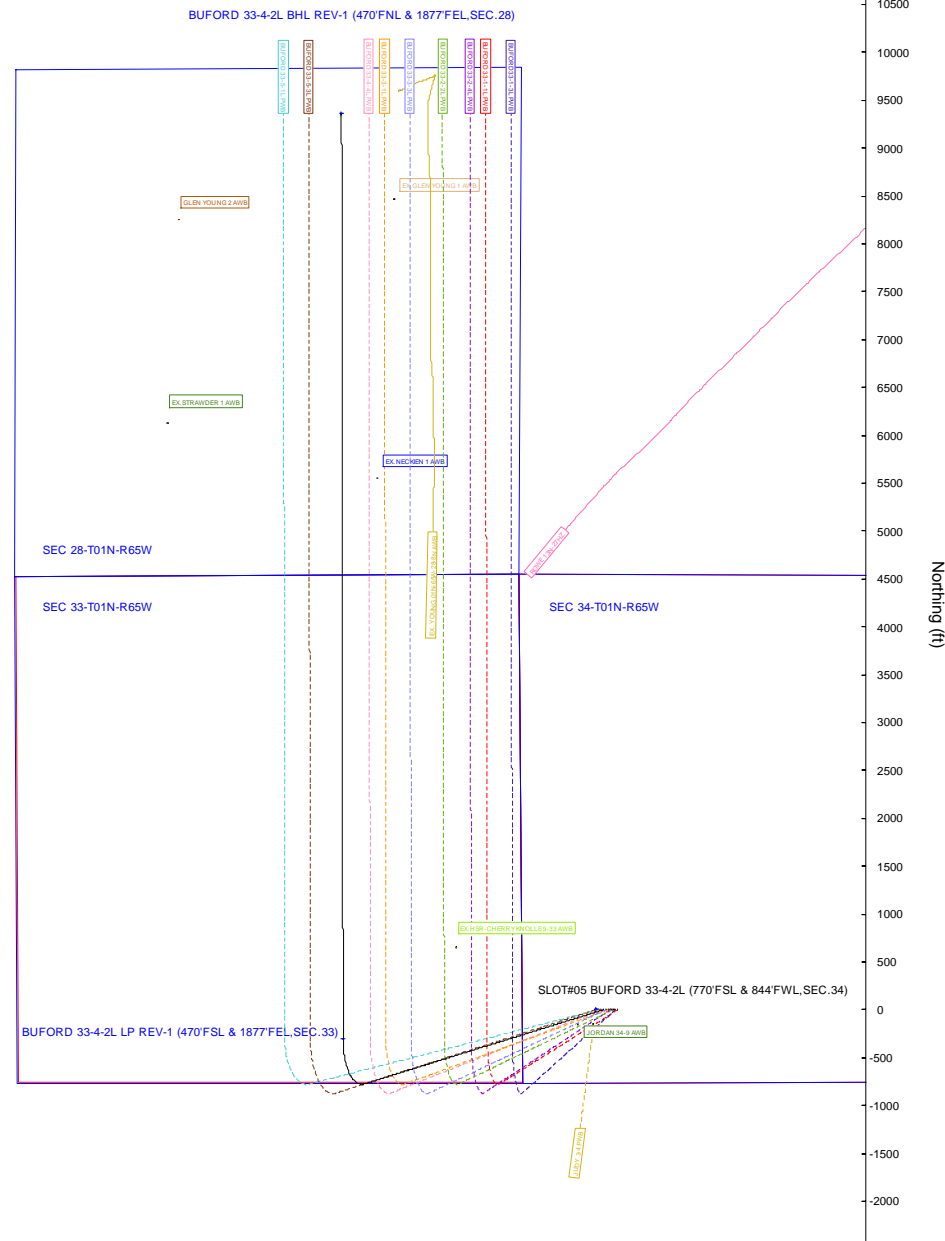
MD (ft)	Inc (")	Az (")	TVD (ft)	Local N (ft)	Local E (ft)	Grid East (US ft)	Grid North (US ft)	Latitude	Longitude
17863.32	90.000	359.907	7332.50	9358.70	-2733.26	3233463.52	1254271.50	40°01'42.0600"N	104°39'58.6800"W

Well Profile Data

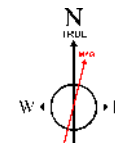
Design Comment	MD (ft)	Inc (")	Az (")	TVD (ft)	Local N (ft)	Local E (ft)	DLS (°/100ft)	VS (ft)
Tie On	20.50	0.000	252.773	20.50	0.00	0.00	0.00	0.00
End of Tangent	500.00	0.000	252.773	500.00	0.00	0.00	0.00	0.00
End of Build	1730.86	24.617	252.773	1693.34	-77.11	-248.70	2.00	-4.30
End of Tangent	7393.66	24.617	252.773	6841.45	-775.71	-2501.73	0.00	-43.26
End of 3D Arc	8202.40	90.000	359.907	7332.50	-302.21	-2717.51	12.00	471.75
End of Tangent	17863.32	90.000	359.907	7332.50	9358.70	-2733.26	0.00	9749.66

Scale 1 inch = 500

Easting (ft)



Baker Hughes



BGGM (1900.0 to 2021.0) Dip: 66.28° Field: 51920.9 nT
Magnetic North is 7.87 degrees East of True North (at 1/15/2020)

To correct azimuth from Magnetic to True add 7.87 degrees

Planned Wellpath Report

BUFORD 33-4-2L (REV-A.0) PWP

Page 1 of 10

REFERENCE WELLPATH IDENTIFICATION			
Operator	CONFLUENCE RESOURCES	Well	BUFORD 33-4-2L
Field	WELD COUNTY (NAD83, TRUE NORTH)	API/Legal	
Facility	SEC.34-T01N-R65W	Wellbore	BUFORD 33-4-2L PWB
Slot	SLOT#05 BUFORD 33-4-2L (770'FSL & 844'FWL,SEC.34)		

REPORT SETUP INFORMATION			
Projection System	NAD83 / Lambert Colorado SP, Northern Zone (501), US feet	Software System	WellArchitect® 6.0
North Reference	True	User	Adamkat
Scale	0.999966	Report Generated	1/27/2020 at 12:39:31 PM
Convergence at slot	0.54° East	Database	Denver

WELLPATH LOCATION						
	Local coordinates		Grid coordinates		Geographic coordinates	
	North[ft]	East[ft]	Easting[US ft]	Northing[US ft]	Latitude	Longitude
Slot Location	149.36	100.85	3236285.57	1244939.56	40°00'9.5760"N	104°39'23.5440"W
Facility Reference Pt			3236186.14	1244789.26	40°00'8.1000"N	104°39'24.8400"W
Field Reference Pt			3230456.90	1245096.09	40°00'11.6640"N	104°40'38.4240"W

WELLPATH DATUM			
Calculation method	Minimum curvature	RIG (20.5') (RKB) to Facility Vertical Datum	5157.50ft
Horizontal Reference Pt	Slot	RIG (20.5') (RKB) to Mean Sea Level	5157.50ft
Vertical Reference Pt	RIG (20.5') (RKB)	RIG (20.5') (RKB) to Mud Line at Slot (SLOT#05 BUFORD 33-4-2L (770'FSL & 844'FWL,SEC.34))	5157.50ft
MD Reference Pt	RIG (20.5') (RKB)	Section Origin	N 0.00, E 0.00 ft
Field Vertical Reference	Mean Sea Level	Section Azimuth	343.72°

Planned Wellpath Report

BUFORD 33-4-2L (REV-A.0) PWP

Page 2 of 10

REFERENCE WELLPATH IDENTIFICATION			
Operator	CONFLUENCE RESOURCES	Well	BUFORD 33-4-2L
Field	WELD COUNTY (NAD83, TRUE NORTH)	API/Legal	
Facility	SEC.34-T01N-R65W	Wellbore	BUFORD 33-4-2L PWB
Slot	SLOT#05 BUFORD 33-4-2L (770'FSL & 844'FWL, SEC.34)		

WELLPATH DATA (185 stations) † = interpolated, ‡ = extrapolated station												
MD [ft]	Inclination [°]	Azimuth [°]	TVD [ft]	Vert Sect [ft]	North [ft]	East [ft]	Grid East [US ft]	Grid North [US ft]	Latitude	Longitude	DLS [°/100ft]	Comments
0.00†	0.000	252.773	0.00	0.00	0.00	0.00	3236285.57	1244939.56	40°00'9.5760"N	104°39'23.5440"W	0.00	
20.50	0.000	252.773	20.50	0.00	0.00	0.00	3236285.57	1244939.56	40°00'9.5760"N	104°39'23.5440"W	0.00	Tie On
120.50†	0.000	252.773	120.50	0.00	0.00	0.00	3236285.57	1244939.56	40°00'9.5760"N	104°39'23.5440"W	0.00	
220.50†	0.000	252.773	220.50	0.00	0.00	0.00	3236285.57	1244939.56	40°00'9.5760"N	104°39'23.5440"W	0.00	
320.50†	0.000	252.773	320.50	0.00	0.00	0.00	3236285.57	1244939.56	40°00'9.5760"N	104°39'23.5440"W	0.00	
420.50†	0.000	252.773	420.50	0.00	0.00	0.00	3236285.57	1244939.56	40°00'9.5760"N	104°39'23.5440"W	0.00	
500.00	0.000	252.773	500.00	0.00	0.00	0.00	3236285.57	1244939.56	40°00'9.5760"N	104°39'23.5440"W	0.00	End of Tangent
520.50†	0.410	252.773	520.50	0.00	-0.02	-0.07	3236285.50	1244939.54	40°00'9.5758"N	104°39'23.5449"W	2.00	
620.50†	2.410	252.773	620.46	-0.04	-0.75	-2.42	3236283.15	1244938.79	40°00'9.5686"N	104°39'23.5751"W	2.00	
720.50†	4.410	252.773	720.28	-0.14	-2.51	-8.10	3236277.49	1244936.97	40°00'9.5512"N	104°39'23.6481"W	2.00	
820.50†	6.410	252.773	819.83	-0.30	-5.30	-17.11	3236268.51	1244934.09	40°00'9.5236"N	104°39'23.7638"W	2.00	
920.50†	8.410	252.773	918.99	-0.51	-9.12	-29.42	3236256.23	1244930.16	40°00'9.4858"N	104°39'23.9221"W	2.00	
1020.50†	10.410	252.773	1017.64	-0.78	-13.97	-45.04	3236240.67	1244925.17	40°00'9.4380"N	104°39'24.1228"W	2.00	
1120.50†	12.410	252.773	1115.66	-1.11	-19.82	-63.93	3236221.83	1244919.13	40°00'9.3801"N	104°39'24.3656"W	2.00	
1220.50†	14.410	252.773	1212.93	-1.49	-26.69	-86.08	3236199.74	1244912.05	40°00'9.3122"N	104°39'24.6502"W	2.00	
1320.50†	16.410	252.773	1309.33	-1.93	-34.56	-111.46	3236174.44	1244903.94	40°00'9.2345"N	104°39'24.9763"W	2.00	
1420.50†	18.410	252.773	1404.74	-2.42	-43.42	-140.04	3236145.95	1244894.81	40°00'9.1469"N	104°39'25.3435"W	2.00	
1520.50†	20.410	252.773	1499.05	-2.97	-53.26	-171.78	3236114.31	1244884.67	40°00'9.0496"N	104°39'25.7514"W	2.00	
1620.50†	22.410	252.773	1592.15	-3.57	-64.07	-206.64	3236079.55	1244873.53	40°00'8.9428"N	104°39'26.1994"W	2.00	
1720.50†	24.410	252.773	1683.91	-4.23	-75.84	-244.59	3236041.72	1244861.40	40°00'8.8265"N	104°39'26.6870"W	2.00	
1730.86	24.617	252.773	1693.34	-4.30	-77.11	-248.70	3236037.63	1244860.09	40°00'8.8139"N	104°39'26.7398"W	2.00	End of Build
1820.50†	24.617	252.773	1774.83	-4.92	-88.17	-284.36	3236002.07	1244848.69	40°00'8.7046"N	104°39'27.1981"W	0.00	
1920.50†	24.617	252.773	1865.74	-5.61	-100.51	-324.15	3235962.40	1244835.98	40°00'8.5827"N	104°39'27.7093"W	0.00	
2020.50†	24.617	252.773	1956.65	-6.29	-112.85	-363.93	3235922.74	1244823.26	40°00'8.4608"N	104°39'28.2206"W	0.00	
2120.50†	24.617	252.773	2047.56	-6.98	-125.18	-403.72	3235883.07	1244810.55	40°00'8.3389"N	104°39'28.7318"W	0.00	
2220.50†	24.617	252.773	2138.48	-7.67	-137.52	-443.51	3235843.40	1244797.83	40°00'8.2170"N	104°39'29.2431"W	0.00	
2320.50†	24.617	252.773	2229.39	-8.36	-149.86	-483.29	3235803.74	1244785.12	40°00'8.0950"N	104°39'29.7544"W	0.00	
2420.50†	24.617	252.773	2320.30	-9.05	-162.19	-523.08	3235764.07	1244772.41	40°00'7.9731"N	104°39'30.2656"W	0.00	
2520.50†	24.617	252.773	2411.21	-9.73	-174.53	-562.87	3235724.41	1244759.69	40°00'7.8512"N	104°39'30.7769"W	0.00	
2620.50†	24.617	252.773	2502.12	-10.42	-186.87	-602.65	3235684.74	1244746.98	40°00'7.7293"N	104°39'31.2881"W	0.00	

Planned Wellpath Report

BUFORD 33-4-2L (REV-A.0) PWP

Page 3 of 10

REFERENCE WELLPATH IDENTIFICATION			
Operator	CONFLUENCE RESOURCES	Well	BUFORD 33-4-2L
Field	WELD COUNTY (NAD83, TRUE NORTH)	API/Legal	
Facility	SEC.34-T01N-R65W	Wellbore	BUFORD 33-4-2L PWB
Slot	SLOT#05 BUFORD 33-4-2L (770'FSL & 844'FWL, SEC.34)		

WELLPATH DATA (185 stations) † = interpolated, ‡ = extrapolated station												
MD [ft]	Inclination [°]	Azimuth [°]	TVD [ft]	Vert Sect [ft]	North [ft]	East [ft]	Grid East [US ft]	Grid North [US ft]	Latitude	Longitude	DLS [°/100ft]	Comments
2720.50†	24.617	252.773	2593.03	-11.11	-199.20	-642.44	3235645.07	1244734.26	40°00'7.6073"N	104°39'31.7994"W	0.00	
2820.50†	24.617	252.773	2683.94	-11.80	-211.54	-682.23	3235605.41	1244721.55	40°00'7.4854"N	104°39'32.3106"W	0.00	
2920.50†	24.617	252.773	2774.85	-12.49	-223.88	-722.01	3235565.74	1244708.84	40°00'7.3635"N	104°39'32.8219"W	0.00	
3020.50†	24.617	252.773	2865.76	-13.17	-236.21	-761.80	3235526.08	1244696.12	40°00'7.2416"N	104°39'33.3331"W	0.00	
3120.50†	24.617	252.773	2956.68	-13.86	-248.55	-801.59	3235486.41	1244683.41	40°00'7.1196"N	104°39'33.8444"W	0.00	
3220.50†	24.617	252.773	3047.59	-14.55	-260.89	-841.37	3235446.74	1244670.69	40°00'6.9977"N	104°39'34.3556"W	0.00	
3320.50†	24.617	252.773	3138.50	-15.24	-273.22	-881.16	3235407.08	1244657.98	40°00'6.8758"N	104°39'34.8669"W	0.00	
3420.50†	24.617	252.773	3229.41	-15.93	-285.56	-920.95	3235367.41	1244645.27	40°00'6.7538"N	104°39'35.3782"W	0.00	
3520.50†	24.617	252.773	3320.32	-16.61	-297.90	-960.73	3235327.75	1244632.55	40°00'6.6319"N	104°39'35.8894"W	0.00	
3620.50†	24.617	252.773	3411.23	-17.30	-310.23	-1000.52	3235288.08	1244619.84	40°00'6.5100"N	104°39'36.4007"W	0.00	
3720.50†	24.617	252.773	3502.14	-17.99	-322.57	-1040.31	3235248.41	1244607.12	40°00'6.3881"N	104°39'36.9119"W	0.00	
3820.50†	24.617	252.773	3593.05	-18.68	-334.91	-1080.09	3235208.75	1244594.41	40°00'6.2661"N	104°39'37.4232"W	0.00	
3920.50†	24.617	252.773	3683.97	-19.37	-347.24	-1119.88	3235169.08	1244581.70	40°00'6.1442"N	104°39'37.9344"W	0.00	
4020.50†	24.617	252.773	3774.88	-20.05	-359.58	-1159.67	3235129.42	1244568.98	40°00'6.0223"N	104°39'38.4456"W	0.00	
4120.50†	24.617	252.773	3865.79	-20.74	-371.92	-1199.45	3235089.75	1244556.27	40°00'5.9003"N	104°39'38.9569"W	0.00	
4220.50†	24.617	252.773	3956.70	-21.43	-384.25	-1239.24	3235050.08	1244543.55	40°00'5.7784"N	104°39'39.4681"W	0.00	
4320.50†	24.617	252.773	4047.61	-22.12	-396.59	-1279.03	3235010.42	1244530.84	40°00'5.6565"N	104°39'39.9794"W	0.00	
4420.50†	24.617	252.773	4138.52	-22.81	-408.93	-1318.81	3234970.75	1244518.12	40°00'5.5345"N	104°39'40.4906"W	0.00	
4520.50†	24.617	252.773	4229.43	-23.49	-421.26	-1358.60	3234931.09	1244505.41	40°00'5.4126"N	104°39'41.0019"W	0.00	
4620.50†	24.617	252.773	4320.34	-24.18	-433.60	-1398.39	3234891.42	1244492.70	40°00'5.2906"N	104°39'41.5131"W	0.00	
4720.50†	24.617	252.773	4411.25	-24.87	-445.94	-1438.17	3234851.75	1244479.98	40°00'5.1687"N	104°39'42.0244"W	0.00	
4820.50†	24.617	252.773	4502.17	-25.56	-458.27	-1477.96	3234812.09	1244467.27	40°00'5.0468"N	104°39'42.5356"W	0.00	
4920.50†	24.617	252.773	4593.08	-26.25	-470.61	-1517.75	3234772.42	1244454.55	40°00'4.9248"N	104°39'43.0469"W	0.00	
5020.50†	24.617	252.773	4683.99	-26.93	-482.95	-1557.53	3234732.76	1244441.84	40°00'4.8029"N	104°39'43.5581"W	0.00	
5120.50†	24.617	252.773	4774.90	-27.62	-495.28	-1597.32	3234693.09	1244429.13	40°00'4.6810"N	104°39'44.0693"W	0.00	
5220.50†	24.617	252.773	4865.81	-28.31	-507.62	-1637.11	3234653.42	1244416.41	40°00'4.5590"N	104°39'44.5806"W	0.00	
5320.50†	24.617	252.773	4956.72	-29.00	-519.96	-1676.89	3234613.76	1244403.70	40°00'4.4371"N	104°39'45.0918"W	0.00	
5420.50†	24.617	252.773	5047.63	-29.69	-532.29	-1716.68	3234574.09	1244390.98	40°00'4.3151"N	104°39'45.6031"W	0.00	
5520.50†	24.617	252.773	5138.54	-30.37	-544.63	-1756.46	3234534.43	1244378.27	40°00'4.1932"N	104°39'46.1143"W	0.00	
5620.50†	24.617	252.773	5229.45	-31.06	-556.97	-1796.25	3234494.76	1244365.56	40°00'4.0712"N	104°39'46.6256"W	0.00	

Planned Wellpath Report

BUFORD 33-4-2L (REV-A.0) PWP

Page 4 of 10

REFERENCE WELLPATH IDENTIFICATION			
Operator	CONFLUENCE RESOURCES	Well	BUFORD 33-4-2L
Field	WELD COUNTY (NAD83, TRUE NORTH)	API/Legal	
Facility	SEC.34-T01N-R65W	Wellbore	BUFORD 33-4-2L PWB
Slot	SLOT#05 BUFORD 33-4-2L (770'FSL & 844'FWL, SEC.34)		

WELLPATH DATA (185 stations) † = interpolated, ‡ = extrapolated station												
MD [ft]	Inclination [°]	Azimuth [°]	TVD [ft]	Vert Sect [ft]	North [ft]	East [ft]	Grid East [US ft]	Grid North [US ft]	Latitude	Longitude	DLS [°/100ft]	Comments
5720.50†	24.617	252.773	5320.37	-31.75	-569.30	-1836.04	3234455.09	1244352.84	40°00'3.9493"N	104°39'47.1368"W	0.00	
5820.50†	24.617	252.773	5411.28	-32.44	-581.64	-1875.82	3234415.43	1244340.13	40°00'3.8274"N	104°39'47.6480"W	0.00	
5920.50†	24.617	252.773	5502.19	-33.13	-593.98	-1915.61	3234375.76	1244327.41	40°00'3.7054"N	104°39'48.1593"W	0.00	
6020.50†	24.617	252.773	5593.10	-33.81	-606.31	-1955.40	3234336.10	1244314.70	40°00'3.5835"N	104°39'48.6705"W	0.00	
6120.50†	24.617	252.773	5684.01	-34.50	-618.65	-1995.18	3234296.43	1244301.98	40°00'3.4615"N	104°39'49.1818"W	0.00	
6220.50†	24.617	252.773	5774.92	-35.19	-630.99	-2034.97	3234256.76	1244289.27	40°00'3.3396"N	104°39'49.6930"W	0.00	
6320.50†	24.617	252.773	5865.83	-35.88	-643.32	-2074.76	3234217.10	1244276.56	40°00'3.2176"N	104°39'50.2042"W	0.00	
6420.50†	24.617	252.773	5956.74	-36.57	-655.66	-2114.54	3234177.43	1244263.84	40°00'3.0957"N	104°39'50.7155"W	0.00	
6520.50†	24.617	252.773	6047.65	-37.26	-668.00	-2154.33	3234137.77	1244251.13	40°00'2.9737"N	104°39'51.2267"W	0.00	
6620.50†	24.617	252.773	6138.57	-37.94	-680.33	-2194.12	3234098.10	1244238.41	40°00'2.8518"N	104°39'51.7379"W	0.00	
6720.50†	24.617	252.773	6229.48	-38.63	-692.67	-2233.90	3234058.43	1244225.70	40°00'2.7298"N	104°39'52.2492"W	0.00	
6820.50†	24.617	252.773	6320.39	-39.32	-705.01	-2273.69	3234018.77	1244212.99	40°00'2.6079"N	104°39'52.7604"W	0.00	
6920.50†	24.617	252.773	6411.30	-40.01	-717.34	-2313.48	3233979.10	1244200.27	40°00'2.4859"N	104°39'53.2716"W	0.00	
7020.50†	24.617	252.773	6502.21	-40.70	-729.68	-2353.26	3233939.44	1244187.56	40°00'2.3640"N	104°39'53.7829"W	0.00	
7120.50†	24.617	252.773	6593.12	-41.38	-742.02	-2393.05	3233899.77	1244174.84	40°00'2.2420"N	104°39'54.2941"W	0.00	
7220.50†	24.617	252.773	6684.03	-42.07	-754.35	-2432.84	3233860.10	1244162.13	40°00'2.1201"N	104°39'54.8053"W	0.00	
7320.50†	24.617	252.773	6774.94	-42.76	-766.69	-2472.62	3233820.44	1244149.42	40°00'1.9981"N	104°39'55.3166"W	0.00	
7393.66	24.617	252.773	6841.45	-43.26	-775.71	-2501.73	3233791.42	1244140.11	40°00'1.9089"N	104°39'55.6906"W	0.00	End of Tangent
7420.50†	23.937	260.436	6865.93	-42.72	-778.28	-2512.44	3233780.73	1244137.45	40°00'1.8836"N	104°39'55.8282"W	12.00	
7520.50†	24.942	289.606	6957.30	-27.93	-774.56	-2552.46	3233740.69	1244140.79	40°00'1.9203"N	104°39'56.3424"W	12.00	
7620.50†	30.701	312.394	7045.95	6.36	-750.18	-2591.31	3233701.60	1244164.79	40°00'2.1611"N	104°39'56.8417"W	12.00	
7720.50†	39.160	327.384	7128.01	58.66	-706.21	-2627.32	3233665.18	1244208.41	40°00'2.5956"N	104°39'57.3044"W	12.00	
7820.50†	48.927	337.473	7199.90	126.68	-644.58	-2658.89	3233633.02	1244269.75	40°00'3.2047"N	104°39'57.7103"W	12.00	
7920.50†	59.339	344.861	7258.46	207.44	-567.96	-2684.66	3233606.53	1244346.11	40°00'3.9618"N	104°39'58.0415"W	12.00	
8020.50†	70.087	350.780	7301.14	297.43	-479.72	-2703.49	3233586.86	1244434.17	40°00'4.8338"N	104°39'58.2836"W	12.00	
8120.50†	81.004	355.932	7326.08	392.70	-383.70	-2714.57	3233574.87	1244530.07	40°00'5.7827"N	104°39'58.4261"W	12.00	
8202.40	90.000	359.907	7332.50†	471.75	-302.21	-2717.51	3233571.15	1244611.53	40°00'6.5880"N	104°39'58.4640"W	12.00	End of 3D Arc
8220.50†	90.000	359.907	7332.50	489.13	-284.11	-2717.54	3233570.95	1244629.63	40°00'6.7669"N	104°39'58.4644"W	0.00	
8320.50†	90.000	359.907	7332.50	585.17	-184.11	-2717.71	3233569.83	1244729.62	40°00'7.7551"N	104°39'58.4666"W	0.00	
8420.50†	90.000	359.907	7332.50	681.20	-84.11	-2717.87	3233568.72	1244829.61	40°00'8.7433"N	104°39'58.4689"W	0.00	

Planned Wellpath Report

BUFORD 33-4-2L (REV-A.0) PWP

Page 5 of 10

REFERENCE WELLPATH IDENTIFICATION			
Operator	CONFLUENCE RESOURCES	Well	BUFORD 33-4-2L
Field	WELD COUNTY (NAD83, TRUE NORTH)	API/Legal	
Facility	SEC.34-T01N-R65W	Wellbore	BUFORD 33-4-2L PWB
Slot	SLOT#05 BUFORD 33-4-2L (770'FSL & 844'FWL, SEC.34)		

WELLPATH DATA (185 stations) † = interpolated, ‡ = extrapolated station												
MD [ft]	Inclination [°]	Azimuth [°]	TVD [ft]	Vert Sect [ft]	North [ft]	East [ft]	Grid East [US ft]	Grid North [US ft]	Latitude	Longitude	DLS [°/100ft]	Comments
8520.50†	90.000	359.907	7332.50	777.24	15.89	-2718.03	3233567.60	1244929.60	40°00'9.7316"N	104°39'58.4711"W	0.00	
8620.50†	90.000	359.907	7332.50	873.27	115.89	-2718.20	3233566.49	1245029.59	40°00'10.7198"N	104°39'58.4733"W	0.00	
8720.50†	90.000	359.907	7332.50	969.31	215.89	-2718.36	3233565.38	1245129.58	40°00'11.7080"N	104°39'58.4756"W	0.00	
8820.50†	90.000	359.907	7332.50	1065.34	315.89	-2718.52	3233564.26	1245229.57	40°00'12.6963"N	104°39'58.4778"W	0.00	
8920.50†	90.000	359.907	7332.50	1161.38	415.89	-2718.68	3233563.15	1245329.56	40°00'13.6845"N	104°39'58.4800"W	0.00	
9020.50†	90.000	359.907	7332.50	1257.42	515.89	-2718.85	3233562.03	1245429.55	40°00'14.6727"N	104°39'58.4823"W	0.00	
9120.50†	90.000	359.907	7332.50	1353.45	615.89	-2719.01	3233560.92	1245529.54	40°00'15.6610"N	104°39'58.4845"W	0.00	
9220.50†	90.000	359.907	7332.50	1449.49	715.89	-2719.17	3233559.81	1245629.53	40°00'16.6492"N	104°39'58.4868"W	0.00	
9320.50†	90.000	359.907	7332.50	1545.52	815.89	-2719.34	3233558.69	1245729.52	40°00'17.6374"N	104°39'58.4890"W	0.00	
9420.50†	90.000	359.907	7332.50	1641.56	915.89	-2719.50	3233557.58	1245829.51	40°00'18.6256"N	104°39'58.4912"W	0.00	
9520.50†	90.000	359.907	7332.50	1737.59	1015.89	-2719.66	3233556.46	1245929.50	40°00'19.6139"N	104°39'58.4935"W	0.00	
9620.50†	90.000	359.907	7332.50	1833.63	1115.89	-2719.83	3233555.35	1246029.49	40°00'20.6021"N	104°39'58.4957"W	0.00	
9720.50†	90.000	359.907	7332.50	1929.66	1215.89	-2719.99	3233554.23	1246129.48	40°00'21.5903"N	104°39'58.4979"W	0.00	
9820.50†	90.000	359.907	7332.50	2025.70	1315.89	-2720.15	3233553.12	1246229.47	40°00'22.5786"N	104°39'58.5002"W	0.00	
9920.50†	90.000	359.907	7332.50	2121.74	1415.89	-2720.31	3233552.01	1246329.46	40°00'23.5668"N	104°39'58.5024"W	0.00	
10020.50†	90.000	359.907	7332.50	2217.77	1515.89	-2720.48	3233550.89	1246429.45	40°00'24.5550"N	104°39'58.5046"W	0.00	
10120.50†	90.000	359.907	7332.50	2313.81	1615.89	-2720.64	3233549.78	1246529.44	40°00'25.5433"N	104°39'58.5069"W	0.00	
10220.50†	90.000	359.907	7332.50	2409.84	1715.89	-2720.80	3233548.66	1246629.43	40°00'26.5315"N	104°39'58.5091"W	0.00	
10320.50†	90.000	359.907	7332.50	2505.88	1815.89	-2720.97	3233547.55	1246729.42	40°00'27.5197"N	104°39'58.5113"W	0.00	
10420.50†	90.000	359.907	7332.50	2601.91	1915.89	-2721.13	3233546.44	1246829.41	40°00'28.5079"N	104°39'58.5136"W	0.00	
10520.50†	90.000	359.907	7332.50	2697.95	2015.89	-2721.29	3233545.32	1246929.40	40°00'29.4962"N	104°39'58.5158"W	0.00	
10620.50†	90.000	359.907	7332.50	2793.98	2115.89	-2721.46	3233544.21	1247029.39	40°00'30.4844"N	104°39'58.5180"W	0.00	
10720.50†	90.000	359.907	7332.50	2890.02	2215.89	-2721.62	3233543.09	1247129.38	40°00'31.4726"N	104°39'58.5203"W	0.00	
10820.50†	90.000	359.907	7332.50	2986.06	2315.89	-2721.78	3233541.98	1247229.37	40°00'32.4609"N	104°39'58.5225"W	0.00	
10920.50†	90.000	359.907	7332.50	3082.09	2415.89	-2721.94	3233540.87	1247329.36	40°00'33.4491"N	104°39'58.5248"W	0.00	
11020.50†	90.000	359.907	7332.50	3178.13	2515.89	-2722.11	3233539.75	1247429.35	40°00'34.4373"N	104°39'58.5270"W	0.00	
11120.50†	90.000	359.907	7332.50	3274.16	2615.89	-2722.27	3233538.64	1247529.34	40°00'35.4255"N	104°39'58.5292"W	0.00	
11220.50†	90.000	359.907	7332.50	3370.20	2715.89	-2722.43	3233537.52	1247629.33	40°00'36.4138"N	104°39'58.5315"W	0.00	
11320.50†	90.000	359.907	7332.50	3466.23	2815.89	-2722.60	3233536.41	1247729.32	40°00'37.4020"N	104°39'58.5337"W	0.00	
11420.50†	90.000	359.907	7332.50	3562.27	2915.89	-2722.76	3233535.30	1247829.31	40°00'38.3902"N	104°39'58.5359"W	0.00	

Planned Wellpath Report

BUFORD 33-4-2L (REV-A.0) PWP

Page 6 of 10

REFERENCE WELLPATH IDENTIFICATION			
Operator	CONFLUENCE RESOURCES	Well	BUFORD 33-4-2L
Field	WELD COUNTY (NAD83, TRUE NORTH)	API/Legal	
Facility	SEC.34-T01N-R65W	Wellbore	BUFORD 33-4-2L PWB
Slot	SLOT#05 BUFORD 33-4-2L (770'FSL & 844'FWL, SEC.34)		

WELLPATH DATA (185 stations) † = interpolated, ‡ = extrapolated station												
MD [ft]	Inclination [°]	Azimuth [°]	TVD [ft]	Vert Sect [ft]	North [ft]	East [ft]	Grid East [US ft]	Grid North [US ft]	Latitude	Longitude	DLS [°/100ft]	Comments
11520.50†	90.000	359.907	7332.50	3658.30	3015.89	-2722.92	3233534.18	1247929.30	40°00'39.3785"N	104°39'58.5382"W	0.00	
11620.50†	90.000	359.907	7332.50	3754.34	3115.89	-2723.09	3233533.07	1248029.29	40°00'40.3667"N	104°39'58.5404"W	0.00	
11720.50†	90.000	359.907	7332.50	3850.37	3215.89	-2723.25	3233531.95	1248129.29	40°00'41.3549"N	104°39'58.5426"W	0.00	
11820.50†	90.000	359.907	7332.50	3946.41	3315.89	-2723.41	3233530.84	1248229.28	40°00'42.3432"N	104°39'58.5449"W	0.00	
11920.50†	90.000	359.907	7332.50	4042.45	3415.89	-2723.57	3233529.72	1248329.27	40°00'43.3314"N	104°39'58.5471"W	0.00	
12020.50†	90.000	359.907	7332.50	4138.48	3515.89	-2723.74	3233528.61	1248429.26	40°00'44.3196"N	104°39'58.5493"W	0.00	
12120.50†	90.000	359.907	7332.50	4234.52	3615.89	-2723.90	3233527.50	1248529.25	40°00'45.3078"N	104°39'58.5516"W	0.00	
12220.50†	90.000	359.907	7332.50	4330.55	3715.89	-2724.06	3233526.38	1248629.24	40°00'46.2961"N	104°39'58.5538"W	0.00	
12320.50†	90.000	359.907	7332.50	4426.59	3815.89	-2724.23	3233525.27	1248729.23	40°00'47.2843"N	104°39'58.5561"W	0.00	
12420.50†	90.000	359.907	7332.50	4522.62	3915.89	-2724.39	3233524.15	1248829.22	40°00'48.2725"N	104°39'58.5583"W	0.00	
12520.50†	90.000	359.907	7332.50	4618.66	4015.89	-2724.55	3233523.04	1248929.21	40°00'49.2608"N	104°39'58.5605"W	0.00	
12620.50†	90.000	359.907	7332.50	4714.69	4115.89	-2724.72	3233521.93	1249029.20	40°00'50.2490"N	104°39'58.5628"W	0.00	
12720.50†	90.000	359.907	7332.50	4810.73	4215.89	-2724.88	3233520.81	1249129.19	40°00'51.2372"N	104°39'58.5650"W	0.00	
12820.50†	90.000	359.907	7332.50	4906.77	4315.89	-2725.04	3233519.70	1249229.18	40°00'52.2254"N	104°39'58.5672"W	0.00	
12920.50†	90.000	359.907	7332.50	5002.80	4415.89	-2725.20	3233518.58	1249329.17	40°00'53.2137"N	104°39'58.5695"W	0.00	
13020.50†	90.000	359.907	7332.50	5098.84	4515.89	-2725.37	3233517.47	1249429.16	40°00'54.2019"N	104°39'58.5717"W	0.00	
13120.50†	90.000	359.907	7332.50	5194.87	4615.88	-2725.53	3233516.36	1249529.15	40°00'55.1901"N	104°39'58.5739"W	0.00	
13220.50†	90.000	359.907	7332.50	5290.91	4715.88	-2725.69	3233515.24	1249629.14	40°00'56.1784"N	104°39'58.5762"W	0.00	
13320.50†	90.000	359.907	7332.50	5386.94	4815.88	-2725.86	3233514.13	1249729.13	40°00'57.1666"N	104°39'58.5784"W	0.00	
13420.50†	90.000	359.907	7332.50	5482.98	4915.88	-2726.02	3233513.01	1249829.12	40°00'58.1548"N	104°39'58.5806"W	0.00	
13520.50†	90.000	359.907	7332.50	5579.01	5015.88	-2726.18	3233511.90	1249929.11	40°00'59.1430"N	104°39'58.5829"W	0.00	
13620.50†	90.000	359.907	7332.50	5675.05	5115.88	-2726.35	3233510.78	1250029.10	40°01'0.1313"N	104°39'58.5851"W	0.00	
13720.50†	90.000	359.907	7332.50	5771.09	5215.88	-2726.51	3233509.67	1250129.09	40°01'1.1195"N	104°39'58.5874"W	0.00	
13820.50†	90.000	359.907	7332.50	5867.12	5315.88	-2726.67	3233508.56	1250229.08	40°01'2.1077"N	104°39'58.5896"W	0.00	
13920.50†	90.000	359.907	7332.50	5963.16	5415.88	-2726.83	3233507.44	1250329.07	40°01'3.0960"N	104°39'58.5918"W	0.00	
14020.50†	90.000	359.907	7332.50	6059.19	5515.88	-2727.00	3233506.33	1250429.06	40°01'4.0842"N	104°39'58.5941"W	0.00	
14120.50†	90.000	359.907	7332.50	6155.23	5615.88	-2727.16	3233505.21	1250529.05	40°01'5.0724"N	104°39'58.5963"W	0.00	
14220.50†	90.000	359.907	7332.50	6251.26	5715.88	-2727.32	3233504.10	1250629.04	40°01'6.0607"N	104°39'58.5985"W	0.00	
14320.50†	90.000	359.907	7332.50	6347.30	5815.88	-2727.49	3233502.99	1250729.03	40°01'7.0489"N	104°39'58.6008"W	0.00	
14420.50†	90.000	359.907	7332.50	6443.33	5915.88	-2727.65	3233501.87	1250829.02	40°01'8.0371"N	104°39'58.6030"W	0.00	

Planned Wellpath Report

BUFORD 33-4-2L (REV-A.0) PWP

Page 7 of 10

REFERENCE WELLPATH IDENTIFICATION			
Operator	CONFLUENCE RESOURCES	Well	BUFORD 33-4-2L
Field	WELD COUNTY (NAD83, TRUE NORTH)	API/Legal	
Facility	SEC.34-T01N-R65W	Wellbore	BUFORD 33-4-2L PWB
Slot	SLOT#05 BUFORD 33-4-2L (770'FSL & 844'FWL, SEC.34)		

WELLPATH DATA (185 stations) † = interpolated, ‡ = extrapolated station												
MD [ft]	Inclination [°]	Azimuth [°]	TVD [ft]	Vert Sect [ft]	North [ft]	East [ft]	Grid East [US ft]	Grid North [US ft]	Latitude	Longitude	DLS [°/100ft]	Comments
14520.50†	90.000	359.907	7332.50	6539.37	6015.88	-2727.81	3233500.76	1250929.01	40°01'9.0253"N	104°39'58.6052"W	0.00	
14620.50†	90.000	359.907	7332.50	6635.41	6115.88	-2727.97	3233499.64	1251029.00	40°01'10.0136"N	104°39'58.6075"W	0.00	
14720.50†	90.000	359.907	7332.50	6731.44	6215.88	-2728.14	3233498.53	1251128.99	40°01'11.0018"N	104°39'58.6097"W	0.00	
14820.50†	90.000	359.907	7332.50	6827.48	6315.88	-2728.30	3233497.42	1251228.98	40°01'11.9900"N	104°39'58.6120"W	0.00	
14920.50†	90.000	359.907	7332.50	6923.51	6415.88	-2728.46	3233496.30	1251328.97	40°01'12.9783"N	104°39'58.6142"W	0.00	
15020.50†	90.000	359.907	7332.50	7019.55	6515.88	-2728.63	3233495.19	1251428.96	40°01'13.9665"N	104°39'58.6164"W	0.00	
15120.50†	90.000	359.907	7332.50	7115.58	6615.88	-2728.79	3233494.07	1251528.95	40°01'14.9547"N	104°39'58.6187"W	0.00	
15220.50†	90.000	359.907	7332.50	7211.62	6715.88	-2728.95	3233492.96	1251628.94	40°01'15.9429"N	104°39'58.6209"W	0.00	
15320.50†	90.000	359.907	7332.50	7307.65	6815.88	-2729.12	3233491.84	1251728.93	40°01'16.9312"N	104°39'58.6231"W	0.00	
15420.50†	90.000	359.907	7332.50	7403.69	6915.88	-2729.28	3233490.73	1251828.92	40°01'17.9194"N	104°39'58.6254"W	0.00	
15520.50†	90.000	359.907	7332.50	7499.72	7015.88	-2729.44	3233489.62	1251928.91	40°01'18.9076"N	104°39'58.6276"W	0.00	
15620.50†	90.000	359.907	7332.50	7595.76	7115.88	-2729.60	3233488.50	1252028.90	40°01'19.8959"N	104°39'58.6298"W	0.00	
15720.50†	90.000	359.907	7332.50	7691.80	7215.88	-2729.77	3233487.39	1252128.89	40°01'20.8841"N	104°39'58.6321"W	0.00	
15820.50†	90.000	359.907	7332.50	7787.83	7315.88	-2729.93	3233486.27	1252228.88	40°01'21.8723"N	104°39'58.6343"W	0.00	
15920.50†	90.000	359.907	7332.50	7883.87	7415.88	-2730.09	3233485.16	1252328.87	40°01'22.8605"N	104°39'58.6365"W	0.00	
16020.50†	90.000	359.907	7332.50	7979.90	7515.88	-2730.26	3233484.05	1252428.86	40°01'23.8488"N	104°39'58.6388"W	0.00	
16120.50†	90.000	359.907	7332.50	8075.94	7615.88	-2730.42	3233482.93	1252528.85	40°01'24.8370"N	104°39'58.6410"W	0.00	
16220.50†	90.000	359.907	7332.50	8171.97	7715.88	-2730.58	3233481.82	1252628.84	40°01'25.8252"N	104°39'58.6433"W	0.00	
16320.50†	90.000	359.907	7332.50	8268.01	7815.88	-2730.75	3233480.70	1252728.83	40°01'26.8134"N	104°39'58.6455"W	0.00	
16420.50†	90.000	359.907	7332.50	8364.04	7915.88	-2730.91	3233479.59	1252828.83	40°01'27.8017"N	104°39'58.6477"W	0.00	
16520.50†	90.000	359.907	7332.50	8460.08	8015.88	-2731.07	3233478.48	1252928.82	40°01'28.7899"N	104°39'58.6500"W	0.00	
16620.50†	90.000	359.907	7332.50	8556.12	8115.88	-2731.23	3233477.36	1253028.81	40°01'29.7781"N	104°39'58.6522"W	0.00	
16720.50†	90.000	359.907	7332.50	8652.15	8215.88	-2731.40	3233476.25	1253128.80	40°01'30.7664"N	104°39'58.6544"W	0.00	
16820.50†	90.000	359.907	7332.50	8748.19	8315.88	-2731.56	3233475.13	1253228.79	40°01'31.7546"N	104°39'58.6567"W	0.00	
16920.50†	90.000	359.907	7332.50	8844.22	8415.88	-2731.72	3233474.02	1253328.78	40°01'32.7428"N	104°39'58.6589"W	0.00	
17020.50†	90.000	359.907	7332.50	8940.26	8515.88	-2731.89	3233472.91	1253428.77	40°01'33.7310"N	104°39'58.6611"W	0.00	
17120.50†	90.000	359.907	7332.50	9036.29	8615.88	-2732.05	3233471.79	1253528.76	40°01'34.7193"N	104°39'58.6634"W	0.00	
17220.50†	90.000	359.907	7332.50	9132.33	8715.88	-2732.21	3233470.68	1253628.75	40°01'35.7075"N	104°39'58.6656"W	0.00	
17320.50†	90.000	359.907	7332.50	9228.36	8815.88	-2732.38	3233469.56	1253728.74	40°01'36.6957"N	104°39'58.6679"W	0.00	
17420.50†	90.000	359.907	7332.50	9324.40	8915.88	-2732.54	3233468.45	1253828.73	40°01'37.6840"N	104°39'58.6701"W	0.00	

Planned Wellpath Report

BUFORD 33-4-2L (REV-A.0) PWP

Page 8 of 10

REFERENCE WELLPATH IDENTIFICATION			
Operator	CONFLUENCE RESOURCES	Well	BUFORD 33-4-2L
Field	WELD COUNTY (NAD83, TRUE NORTH)	API/Legal	
Facility	SEC.34-T01N-R65W	Wellbore	BUFORD 33-4-2L PWB
Slot	SLOT#05 BUFORD 33-4-2L (770'FSL & 844'FWL, SEC.34)		

WELLPATH DATA (185 stations) † = interpolated, ‡ = extrapolated station												
MD [ft]	Inclination [°]	Azimuth [°]	TVD [ft]	Vert Sect [ft]	North [ft]	East [ft]	Grid East [US ft]	Grid North [US ft]	Latitude	Longitude	DLS [°/100ft]	Comments
17520.50†	90.000	359.907	7332.50	9420.44	9015.88	-2732.70	3233467.33	1253928.72	40°01'38.6722"N	104°39'58.6723"W	0.00	
17620.50†	90.000	359.907	7332.50	9516.47	9115.88	-2732.86	3233466.22	1254028.71	40°01'39.6604"N	104°39'58.6746"W	0.00	
17720.50†	90.000	359.907	7332.50	9612.51	9215.88	-2733.03	3233465.11	1254128.70	40°01'40.6486"N	104°39'58.6768"W	0.00	
17820.50†	90.000	359.907	7332.50	9708.54	9315.88	-2733.19	3233463.99	1254228.69	40°01'41.6369"N	104°39'58.6790"W	0.00	
17863.32	90.000	359.907	7332.50‡	9749.66	9358.70	-2733.26	3233463.52	1254271.50	40°01'42.0600"N	104°39'58.6800"W	0.00	End of Tangent

TARGETS									
Name	MD [ft]	TVD [ft]	North [ft]	East [ft]	Grid East [US ft]	Grid North [US ft]	Latitude	Longitude	Shape
SEC 28-T01N-R65W	N/A	1.00	0.00	-75.64	3236209.93	1244938.84	40°00'9.5760"N	104°39'24.5160"W	polygon
	2D Polygon: dimensions not calculated								
SEC 33-T01N-R65W	N/A	1.00	0.00	-75.64	3236209.93	1244938.84	40°00'9.5760"N	104°39'24.5160"W	polygon
	2D Polygon: dimensions not calculated								
SEC 34-T01N-R65W	N/A	1.00	0.00	-75.64	3236209.93	1244938.84	40°00'9.5760"N	104°39'24.5160"W	polygon
	2D Polygon: dimensions not calculated								
2) BUFORD 33-4-2L BHL REV-1 (470'FNL & 1877'FEL,SEC.28)	17863.32	7332.50	9358.70	-2733.26	3233463.52	1254271.50	40°01'42.0600"N	104°39'58.6800"W	point
1) BUFORD 33-4-2L LP REV-1 (470'FSL & 1877'FEL,SEC.33)	8202.40	7332.50	-302.21	-2717.51	3233571.15	1244611.53	40°00'6.5880"N	104°39'58.4640"W	point

Planned Wellpath Report

BUFORD 33-4-2L (REV-A.0) PWP

Page 9 of 10

REFERENCE WELLPATH IDENTIFICATION			
Operator	CONFLUENCE RESOURCES	Well	BUFORD 33-4-2L
Field	WELD COUNTY (NAD83, TRUE NORTH)	API/Legal	
Facility	SEC.34-T01N-R65W	Wellbore	BUFORD 33-4-2L PWB
Slot	SLOT#05 BUFORD 33-4-2L (770'FSL & 844'FWL, SEC.34)		

SURVEY PROGRAM - Ref Wellbore: BUFORD 33-4-2L PWB Ref Wellpath: BUFORD 33-4-2L (REV-A.0) PWP				
Start MD [ft]	End MD [ft]	Positional Uncertainty Model	Log Name/Comment	Wellbore
20.50	1500.00	BH NaviTrak (2019) (Standard)		BUFORD 33-4-2L PWB
1500.00	17931.23	BH AutoTrak Curve/eXpress (2019) (Standard)		BUFORD 33-4-2L PWB

Planned Wellpath Report

BUFORD 33-4-2L (REV-A.0) PWP

Page 10 of 10

REFERENCE WELLPATH IDENTIFICATION			
Operator	CONFLUENCE RESOURCES	Well	BUFORD 33-4-2L
Field	WELD COUNTY (NAD83, TRUE NORTH)	API/Legal	
Facility	SEC.34-T01N-R65W	Wellbore	BUFORD 33-4-2L PWB
Slot	SLOT#05 BUFORD 33-4-2L (770'FSL & 844'FWL, SEC.34)		

DESIGN COMMENTS				
MD [ft]	Inclination [°]	Azimuth [°]	TVD [ft]	Comment
20.50	0.000	252.773	20.50	Tie On
500.00	0.000	252.773	500.00	End of Tangent
1730.86	24.617	252.773	1693.34	End of Build
7393.66	24.617	252.773	6841.45	End of Tangent
8202.40	90.000	359.907	7332.50	End of 3D Arc
17863.32	90.000	359.907	7332.50	End of Tangent