

CONFLUENCE RESOURCES

Location:	COLORADO	Slot:	SLOT#03 BUFORD 33-5-1L (770'FSL & 794'FWL,SEC.34)
Field:	WELD COUNTY (NAD83, TRUE NORTH)	Well:	BUFORD 33-5-1L
Facility:	SEC.34-T01N-R65W	Wellbore:	BUFORD 33-5-1L PWB
Plot reference wellpath is BUFORD 33-5-1L (REV-A.0) PWP		Grid System: NAD83 / Lambert Colorado SP, Northern Zone (501), US feet	
True vertical depths are referenced to RIG (20.5') (RKB)		North Reference: True north	
Reference wellpath measured depths are referenced to RIG (20.5') (RKB)		Scale: True distance	
RIG (20.5') (RKB) to Mean Sea Level: 5156.5 feet		Coordinates are in feet referenced to Slot	
Mean Sea Level to Mud line (At Slot: SLOT#03 BUFORD 33-5-1L (770'FSL & 794'FWL,SEC.34)): 0 feet		Depths are in feet	
Offset wellpath MDs are referenced to each path's default MD datum		Created by: adamkiet on 2020-01-27; Database: Denver	

Location Information				
Facility Name		Grid East (US ft)	Grid North (US ft)	Latitude
SEC.34-T01N-R65W		3236186.141	1244789.256	40°00'8.1000"N
Slot		Local N (ft)	Local E (ft)	Latitude
SLOT#03 BUFORD 33-5-1L (770'FSL & 794'FWL,SEC.34)		149.36	50.43	40°00'9.5760"N
RIG (20.5') (RKB) to Mud line (At Slot: SLOT#03 BUFORD 33-5-1L (770'FSL & 794'FWL,SEC.34))		5156.5ft		
Mean Sea Level to Mud line (At Slot: SLOT#03 BUFORD 33-5-1L (770'FSL & 794'FWL,SEC.34))		0ft		
RIG (20.5') (RKB) to Mean Sea Level		5156.5ft		

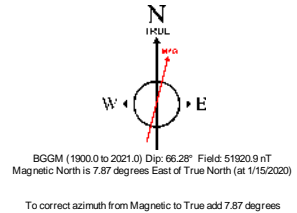
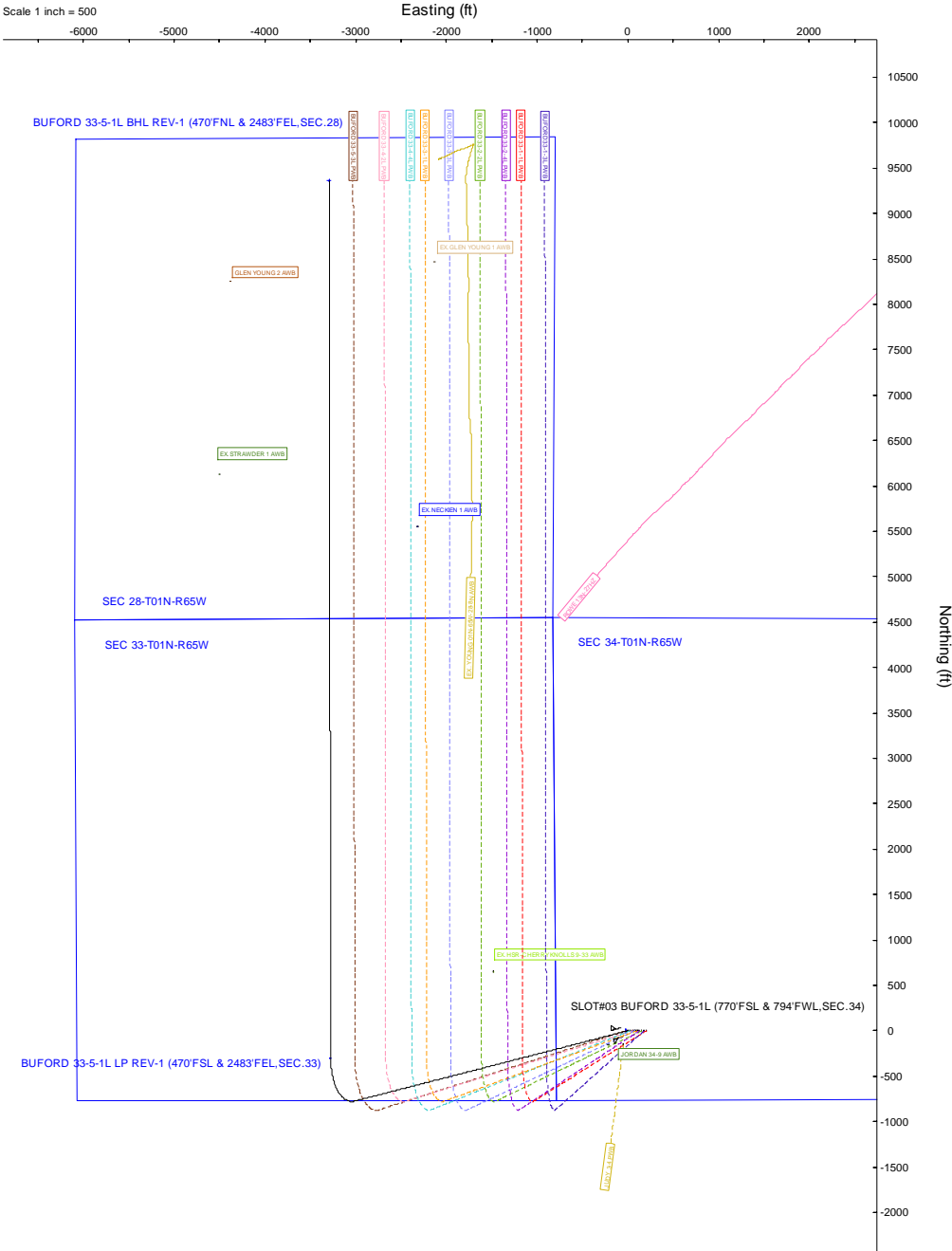
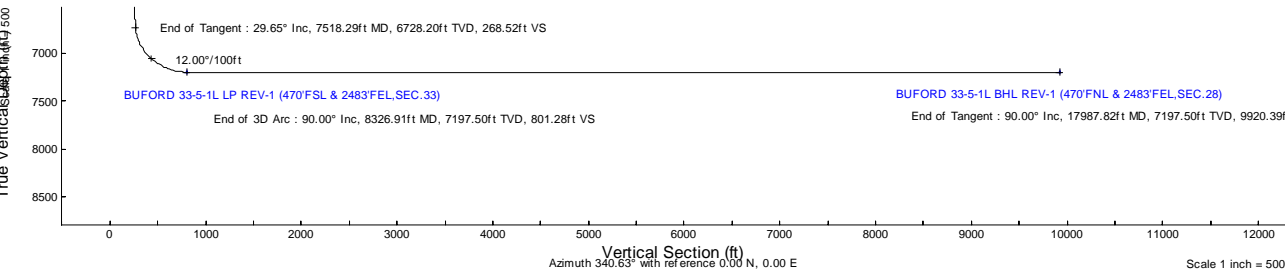
Targets								
Name	MD (ft)	TVD (ft)	Local N (ft)	Local E (ft)	Grid East (US ft)	Grid North (US ft)	Latitude	Longitude
SEC 28-T01N-R65W	N/A	0.00	0.00	-25.21	3236209.93	1244938.84	40°00'9.5760"N	104°39'24.5160"W
SEC 33-T01N-R65W	N/A	0.00	0.00	-25.21	3236209.93	1244938.84	40°00'9.5760"N	104°39'24.5160"W
SEC 34-T01N-R65W	N/A	0.00	0.00	-25.21	3236209.93	1244938.84	40°00'9.5760"N	104°39'24.5160"W
BUFORD 33-5-1L BHL REV-1 (470'FNL & 2483'FEL,SEC.28)	17987.82	7197.50	9358.76	-3290.55	3232855.86	1254265.80	40°01'42.0600"N	104°40'6.4920"W
BUFORD 33-5-1L LP REV-1 (470'FSL & 2483'FEL,SEC.33)	8326.91	7197.50	-302.14	-3275.02	3232963.26	1244605.82	40°00'5.5880"N	104°40'6.2760"W

Hole and Casing Sections									
Name	Start MD (ft)	End MD (ft)	Interval (ft)	Start TVD (ft)	End TVD (ft)	Start Local N (ft)	End Local N (ft)	Start Local E (ft)	End Local E (ft)
13.5in Open Hole	20.50	1500.00	1479.50	20.50	1479.82	0.00	0.00	-43.04	-167.32
9.625in Casing Surface	20.50	1500.00	1479.50	20.50	1479.82	0.00	0.00	-43.04	-167.32
8.5in Open Hole	1500.00	17987.82	16487.82	1479.82	7197.50	-43.04	-167.32	9358.76	-3290.55

Tie-On Position								
MD (ft)	Inc (°)	Az (°)	TVD (ft)	Local N (ft)	Local E (ft)	Grid East (US ft)	Grid North (US ft)	Latitude
20.50	0.000	255.576	20.50	0.00	0.00	3236235.14	1244939.08	40°00'9.5760"N

Bottom Hole Location								
MD (ft)	Inc (°)	Az (°)	TVD (ft)	Local N (ft)	Local E (ft)	Grid East (US ft)	Grid North (US ft)	Latitude
17987.82	90.000	359.908	7197.50	9358.76	-3290.55	3232855.86	1254265.80	40°01'42.0600"N

Well Profile Data								
Design Comment	MD (ft)	Inc (°)	Az (°)	TVD (ft)	Local N (ft)	Local E (ft)	DLS (°/100ft)	VS (ft)
Tie On	20.50	0.000	255.576	20.50	0.00	0.00	0.00	0.00
End of Tangent	500.00	0.000	255.576	500.00	0.00	0.00	0.00	0.00
End of Build	1982.46	29.649	255.576	1917.18	-93.43	-363.26	2.00	32.35
End of Tangent	7518.29	29.649	255.576	6728.20	-775.60	-3015.45	0.00	268.52
End of 3D Arc	8326.91	90.000	359.908	7197.50	-302.14	-3275.02	12.00	801.28
End of Tangent	17987.82	90.000	359.908	7197.50	9358.76	-3290.55	0.00	9920.39



Planned Wellpath Report

BUFORD 33-5-1L (REV-A.0) PWP

Page 1 of 10

REFERENCE WELLPATH IDENTIFICATION			
Operator	CONFLUENCE RESOURCES	Well	BUFORD 33-5-1L
Field	WELD COUNTY (NAD83, TRUE NORTH)	API/Legal	
Facility	SEC.34-T01N-R65W	Wellbore	BUFORD 33-5-1L PWB
Slot	SLOT#03 BUFORD 33-5-1L (770'FSL & 794'FWL, SEC.34)		

REPORT SETUP INFORMATION			
Projection System	NAD83 / Lambert Colorado SP, Northern Zone (501), US feet	Software System	WellArchitect® 6.0
North Reference	True	User	Adamkat
Scale	0.999966	Report Generated	1/27/2020 at 8:43:08 AM
Convergence at slot	0.54° East	Database	Denver

WELLPATH LOCATION						
	Local coordinates		Grid coordinates		Geographic coordinates	
	North[ft]	East[ft]	Easting[US ft]	Northing[US ft]	Latitude	Longitude
Slot Location	149.36	50.43	3236235.14	1244939.08	40°00'9.5760"N	104°39'24.1920"W
Facility Reference Pt			3236186.14	1244789.26	40°00'8.1000"N	104°39'24.8400"W
Field Reference Pt			3230456.90	1245096.09	40°00'11.6640"N	104°40'38.4240"W

WELLPATH DATUM			
Calculation method	Minimum curvature	RIG (20.5') (RKB) to Facility Vertical Datum	5156.50ft
Horizontal Reference Pt	Slot	RIG (20.5') (RKB) to Mean Sea Level	5156.50ft
Vertical Reference Pt	RIG (20.5') (RKB)	RIG (20.5') (RKB) to Mud Line at Slot (SLOT#03 BUFORD 33-5-1L (770'FSL & 794'FWL, SEC.34))	5156.50ft
MD Reference Pt	RIG (20.5') (RKB)	Section Origin	N 0.00, E 0.00 ft
Field Vertical Reference	Mean Sea Level	Section Azimuth	340.63°

Planned Wellpath Report

BUFORD 33-5-1L (REV-A.0) PWP

Page 2 of 10

REFERENCE WELLPATH IDENTIFICATION			
Operator	CONFLUENCE RESOURCES	Well	BUFORD 33-5-1L
Field	WELD COUNTY (NAD83, TRUE NORTH)	API/Legal	
Facility	SEC.34-T01N-R65W	Wellbore	BUFORD 33-5-1L PWB
Slot	SLOT#03 BUFORD 33-5-1L (770'FSL & 794'FWL, SEC.34)		

WELLPATH DATA (186 stations) † = interpolated, ‡ = extrapolated station												
MD [ft]	Inclination [°]	Azimuth [°]	TVD [ft]	Vert Sect [ft]	North [ft]	East [ft]	Grid East [US ft]	Grid North [US ft]	Latitude	Longitude	DLS [°/100ft]	Comments
0.00†	0.000	255.576	0.00	0.00	0.00	0.00	3236235.14	1244939.08	40°00'9.5760"N	104°39'24.1920"W	0.00	
20.50	0.000	255.576	20.50	0.00	0.00	0.00	3236235.14	1244939.08	40°00'9.5760"N	104°39'24.1920"W	0.00	Tie On
120.50†	0.000	255.576	120.50	0.00	0.00	0.00	3236235.14	1244939.08	40°00'9.5760"N	104°39'24.1920"W	0.00	
220.50†	0.000	255.576	220.50	0.00	0.00	0.00	3236235.14	1244939.08	40°00'9.5760"N	104°39'24.1920"W	0.00	
320.50†	0.000	255.576	320.50	0.00	0.00	0.00	3236235.14	1244939.08	40°00'9.5760"N	104°39'24.1920"W	0.00	
420.50†	0.000	255.576	420.50	0.00	0.00	0.00	3236235.14	1244939.08	40°00'9.5760"N	104°39'24.1920"W	0.00	
500.00	0.000	255.576	500.00	0.00	0.00	0.00	3236235.14	1244939.08	40°00'9.5760"N	104°39'24.1920"W	0.00	End of Tangent
520.50†	0.410	255.576	520.50	0.01	-0.02	-0.07	3236235.07	1244939.06	40°00'9.5758"N	104°39'24.1929"W	2.00	
620.50†	2.410	255.576	620.46	0.22	-0.63	-2.45	3236232.70	1244938.43	40°00'9.5698"N	104°39'24.2235"W	2.00	
720.50†	4.410	255.576	720.28	0.73	-2.11	-8.21	3236226.95	1244936.89	40°00'9.5551"N	104°39'24.2976"W	2.00	
820.50†	6.410	255.576	819.83	1.54	-4.46	-17.34	3236217.84	1244934.46	40°00'9.5319"N	104°39'24.4149"W	2.00	
920.50†	8.410	255.576	918.99	2.66	-7.67	-29.83	3236205.39	1244931.12	40°00'9.5002"N	104°39'24.5754"W	2.00	
1020.50†	10.410	255.576	1017.64	4.07	-11.75	-45.67	3236189.59	1244926.90	40°00'9.4599"N	104°39'24.7788"W	2.00	
1120.50†	12.410	255.576	1115.66	5.77	-16.67	-64.83	3236170.48	1244921.79	40°00'9.4112"N	104°39'25.0250"W	2.00	
1220.50†	14.410	255.576	1212.93	7.77	-22.45	-87.29	3236148.08	1244915.80	40°00'9.3541"N	104°39'25.3136"W	2.00	
1320.50†	16.410	255.576	1309.33	10.06	-29.07	-113.02	3236122.41	1244908.94	40°00'9.2887"N	104°39'25.6443"W	2.00	
1420.50†	18.410	255.576	1404.74	12.64	-36.52	-142.00	3236093.51	1244901.21	40°00'9.2151"N	104°39'26.0167"W	2.00	
1520.50†	20.410	255.576	1499.05	15.51	-44.80	-174.18	3236061.41	1244892.63	40°00'9.1333"N	104°39'26.4302"W	2.00	
1620.50†	22.410	255.576	1592.15	18.66	-53.89	-209.53	3236026.14	1244883.20	40°00'9.0434"N	104°39'26.8845"W	2.00	
1720.50†	24.410	255.576	1683.91	22.08	-63.79	-248.01	3235987.76	1244872.94	40°00'8.9456"N	104°39'27.3789"W	2.00	
1820.50†	26.410	255.576	1774.23	25.79	-74.48	-289.56	3235946.31	1244861.86	40°00'8.8400"N	104°39'27.9129"W	2.00	
1920.50†	28.410	255.576	1863.00	29.76	-85.94	-334.14	3235901.85	1244849.97	40°00'8.7266"N	104°39'28.4858"W	2.00	
1982.46	29.649	255.576	1917.18	32.35	-93.43	-363.26	3235872.80	1244842.20	40°00'8.6526"N	104°39'28.8599"W	2.00	End of Build
2020.50†	29.649	255.576	1950.24	33.97	-98.12	-381.49	3235854.62	1244837.34	40°00'8.6063"N	104°39'29.0941"W	0.00	
2120.50†	29.649	255.576	2037.14	38.24	-110.44	-429.40	3235806.83	1244824.56	40°00'8.4845"N	104°39'29.7098"W	0.00	
2220.50†	29.649	255.576	2124.05	42.50	-122.77	-477.31	3235759.04	1244811.79	40°00'8.3627"N	104°39'30.3254"W	0.00	
2320.50†	29.649	255.576	2210.96	46.77	-135.09	-525.22	3235711.26	1244799.01	40°00'8.2409"N	104°39'30.9410"W	0.00	
2420.50†	29.649	255.576	2297.87	51.04	-147.41	-573.12	3235663.47	1244786.23	40°00'8.1192"N	104°39'31.5567"W	0.00	
2520.50†	29.649	255.576	2384.77	55.30	-159.73	-621.03	3235615.68	1244773.45	40°00'7.9974"N	104°39'32.1723"W	0.00	
2620.50†	29.649	255.576	2471.68	59.57	-172.06	-668.94	3235567.89	1244760.68	40°00'7.8756"N	104°39'32.7880"W	0.00	

Planned Wellpath Report

BUFORD 33-5-1L (REV-A.0) PWP

Page 3 of 10

REFERENCE WELLPATH IDENTIFICATION			
Operator	CONFLUENCE RESOURCES	Well	BUFORD 33-5-1L
Field	WELD COUNTY (NAD83, TRUE NORTH)	API/Legal	
Facility	SEC.34-T01N-R65W	Wellbore	BUFORD 33-5-1L PWB
Slot	SLOT#03 BUFORD 33-5-1L (770'FSL & 794'FWL, SEC.34)		

WELLPATH DATA (186 stations) † = interpolated, ‡ = extrapolated station												
MD [ft]	Inclination [°]	Azimuth [°]	TVD [ft]	Vert Sect [ft]	North [ft]	East [ft]	Grid East [US ft]	Grid North [US ft]	Latitude	Longitude	DLS [°/100ft]	Comments
2720.50†	29.649	255.576	2558.59	63.84	-184.38	-716.85	3235520.10	1244747.90	40°00'7.7538"N	104°39'33.4036"W	0.00	
2820.50†	29.649	255.576	2645.49	68.10	-196.70	-764.76	3235472.31	1244735.12	40°00'7.6320"N	104°39'34.0192"W	0.00	
2920.50†	29.649	255.576	2732.40	72.37	-209.03	-812.67	3235424.53	1244722.34	40°00'7.5102"N	104°39'34.6349"W	0.00	
3020.50†	29.649	255.576	2819.31	76.63	-221.35	-860.58	3235376.74	1244709.57	40°00'7.3884"N	104°39'35.2505"W	0.00	
3120.50†	29.649	255.576	2906.21	80.90	-233.67	-908.49	3235328.95	1244696.79	40°00'7.2666"N	104°39'35.8661"W	0.00	
3220.50†	29.649	255.576	2993.12	85.17	-245.99	-956.40	3235281.16	1244684.01	40°00'7.1448"N	104°39'36.4817"W	0.00	
3320.50†	29.649	255.576	3080.03	89.43	-258.32	-1004.31	3235233.37	1244671.24	40°00'7.0230"N	104°39'37.0974"W	0.00	
3420.50†	29.649	255.576	3166.94	93.70	-270.64	-1052.22	3235185.58	1244658.46	40°00'6.9012"N	104°39'37.7130"W	0.00	
3520.50†	29.649	255.576	3253.84	97.97	-282.96	-1100.13	3235137.80	1244645.68	40°00'6.7794"N	104°39'38.3286"W	0.00	
3620.50†	29.649	255.576	3340.75	102.23	-295.28	-1148.04	3235090.01	1244632.90	40°00'6.6576"N	104°39'38.9443"W	0.00	
3720.50†	29.649	255.576	3427.66	106.50	-307.61	-1195.95	3235042.22	1244620.13	40°00'6.5358"N	104°39'39.5599"W	0.00	
3820.50†	29.649	255.576	3514.56	110.76	-319.93	-1243.86	3234994.43	1244607.35	40°00'6.4140"N	104°39'40.1755"W	0.00	
3920.50†	29.649	255.576	3601.47	115.03	-332.25	-1291.77	3234946.64	1244594.57	40°00'6.2922"N	104°39'40.7911"W	0.00	
4020.50†	29.649	255.576	3688.38	119.30	-344.58	-1339.68	3234898.85	1244581.79	40°00'6.1704"N	104°39'41.4068"W	0.00	
4120.50†	29.649	255.576	3775.29	123.56	-356.90	-1387.59	3234851.07	1244569.02	40°00'6.0486"N	104°39'42.0224"W	0.00	
4220.50†	29.649	255.576	3862.19	127.83	-369.22	-1435.49	3234803.28	1244556.24	40°00'5.9268"N	104°39'42.6380"W	0.00	
4320.50†	29.649	255.576	3949.10	132.10	-381.54	-1483.40	3234755.49	1244543.46	40°00'5.8050"N	104°39'43.2536"W	0.00	
4420.50†	29.649	255.576	4036.01	136.36	-393.87	-1531.31	3234707.70	1244530.69	40°00'5.6832"N	104°39'43.8693"W	0.00	
4520.50†	29.649	255.576	4122.91	140.63	-406.19	-1579.22	3234659.91	1244517.91	40°00'5.5614"N	104°39'44.4849"W	0.00	
4620.50†	29.649	255.576	4209.82	144.90	-418.51	-1627.13	3234612.12	1244505.13	40°00'5.4396"N	104°39'45.1005"W	0.00	
4720.50†	29.649	255.576	4296.73	149.16	-430.83	-1675.04	3234564.34	1244492.35	40°00'5.3178"N	104°39'45.7161"W	0.00	
4820.50†	29.649	255.576	4383.63	153.43	-443.16	-1722.95	3234516.55	1244479.58	40°00'5.1960"N	104°39'46.3318"W	0.00	
4920.50†	29.649	255.576	4470.54	157.69	-455.48	-1770.86	3234468.76	1244466.80	40°00'5.0742"N	104°39'46.9474"W	0.00	
5020.50†	29.649	255.576	4557.45	161.96	-467.80	-1818.77	3234420.97	1244454.02	40°00'4.9524"N	104°39'47.5630"W	0.00	
5120.50†	29.649	255.576	4644.36	166.23	-480.12	-1866.68	3234373.18	1244441.24	40°00'4.8306"N	104°39'48.1786"W	0.00	
5220.50†	29.649	255.576	4731.26	170.49	-492.45	-1914.59	3234325.39	1244428.47	40°00'4.7087"N	104°39'48.7942"W	0.00	
5320.50†	29.649	255.576	4818.17	174.76	-504.77	-1962.50	3234277.61	1244415.69	40°00'4.5869"N	104°39'49.4099"W	0.00	
5420.50†	29.649	255.576	4905.08	179.03	-517.09	-2010.41	3234229.82	1244402.91	40°00'4.4651"N	104°39'50.0255"W	0.00	
5520.50†	29.649	255.576	4991.98	183.29	-529.42	-2058.32	3234182.03	1244390.14	40°00'4.3433"N	104°39'50.6411"W	0.00	
5620.50†	29.649	255.576	5078.89	187.56	-541.74	-2106.23	3234134.24	1244377.36	40°00'4.2215"N	104°39'51.2567"W	0.00	

Planned Wellpath Report

BUFORD 33-5-1L (REV-A.0) PWP

Page 4 of 10

REFERENCE WELLPATH IDENTIFICATION			
Operator	CONFLUENCE RESOURCES	Well	BUFORD 33-5-1L
Field	WELD COUNTY (NAD83, TRUE NORTH)	API/Legal	
Facility	SEC.34-T01N-R65W	Wellbore	BUFORD 33-5-1L PWB
Slot	SLOT#03 BUFORD 33-5-1L (770'FSL & 794'FWL, SEC.34)		

WELLPATH DATA (186 stations) † = interpolated, ‡ = extrapolated station												
MD [ft]	Inclination [°]	Azimuth [°]	TVD [ft]	Vert Sect [ft]	North [ft]	East [ft]	Grid East [US ft]	Grid North [US ft]	Latitude	Longitude	DLS [°/100ft]	Comments
5720.50†	29.649	255.576	5165.80	191.82	-554.06	-2154.14	3234086.45	1244364.58	40°00'4.0997"N	104°39'51.8723"W	0.00	
5820.50†	29.649	255.576	5252.71	196.09	-566.38	-2202.05	3234038.66	1244351.80	40°00'3.9779"N	104°39'52.4879"W	0.00	
5920.50†	29.649	255.576	5339.61	200.36	-578.71	-2249.96	3233990.87	1244339.03	40°00'3.8560"N	104°39'53.1036"W	0.00	
6020.50†	29.649	255.576	5426.52	204.62	-591.03	-2297.86	3233943.09	1244326.25	40°00'3.7342"N	104°39'53.7192"W	0.00	
6120.50†	29.649	255.576	5513.43	208.89	-603.35	-2345.77	3233895.30	1244313.47	40°00'3.6124"N	104°39'54.3348"W	0.00	
6220.50†	29.649	255.576	5600.33	213.16	-615.67	-2393.68	3233847.51	1244300.69	40°00'3.4906"N	104°39'54.9504"W	0.00	
6320.50†	29.649	255.576	5687.24	217.42	-628.00	-2441.59	3233799.72	1244287.92	40°00'3.3687"N	104°39'55.5660"W	0.00	
6420.50†	29.649	255.576	5774.15	221.69	-640.32	-2489.50	3233751.93	1244275.14	40°00'3.2469"N	104°39'56.1816"W	0.00	
6520.50†	29.649	255.576	5861.05	225.96	-652.64	-2537.41	3233704.14	1244262.36	40°00'3.1251"N	104°39'56.7972"W	0.00	
6620.50†	29.649	255.576	5947.96	230.22	-664.97	-2585.32	3233656.36	1244249.59	40°00'3.0033"N	104°39'57.4128"W	0.00	
6720.50†	29.649	255.576	6034.87	234.49	-677.29	-2633.23	3233608.57	1244236.81	40°00'2.8814"N	104°39'58.0284"W	0.00	
6820.50†	29.649	255.576	6121.78	238.75	-689.61	-2681.14	3233560.78	1244224.03	40°00'2.7596"N	104°39'58.6441"W	0.00	
6920.50†	29.649	255.576	6208.68	243.02	-701.93	-2729.05	3233512.99	1244211.25	40°00'2.6378"N	104°39'59.2597"W	0.00	
7020.50†	29.649	255.576	6295.59	247.29	-714.26	-2776.96	3233465.20	1244198.48	40°00'2.5160"N	104°39'59.8753"W	0.00	
7120.50†	29.649	255.576	6382.50	251.55	-726.58	-2824.87	3233417.41	1244185.70	40°00'2.3941"N	104°40'0.4909"W	0.00	
7220.50†	29.649	255.576	6469.40	255.82	-738.90	-2872.78	3233369.63	1244172.92	40°00'2.2723"N	104°40'1.1065"W	0.00	
7320.50†	29.649	255.576	6556.31	260.09	-751.22	-2920.69	3233321.84	1244160.14	40°00'2.1505"N	104°40'1.7221"W	0.00	
7420.50†	29.649	255.576	6643.22	264.35	-763.55	-2968.60	3233274.05	1244147.37	40°00'2.0286"N	104°40'2.3377"W	0.00	
7518.29	29.649	255.576	6728.20	268.52	-775.60	-3015.45	3233227.32	1244134.87	40°00'1.9095"N	104°40'2.9397"W	0.00	End of Tangent
7520.50†	29.593	256.100	6730.13	268.62	-775.86	-3016.51	3233226.26	1244134.59	40°00'1.9069"N	104°40'2.9533"W	12.00	
7620.50†	29.307	280.643	6817.52	283.27	-777.28	-3064.70	3233178.08	1244132.72	40°00'1.8928"N	104°40'3.5726"W	12.00	
7720.50†	33.242	302.618	6903.26	317.24	-757.92	-3112.02	3233130.59	1244151.63	40°00'2.0841"N	104°40'4.1806"W	12.00	
7820.50†	40.169	319.114	6983.58	369.03	-718.61	-3156.38	3233085.86	1244190.51	40°00'2.4724"N	104°40'4.7507"W	12.00	
7920.50†	48.811	331.052	7054.97	436.38	-661.09	-3195.84	3233045.85	1244247.65	40°00'3.0408"N	104°40'5.2579"W	12.00	
8020.50†	58.388	340.065	7114.32	516.35	-587.87	-3228.69	3233012.30	1244320.55	40°00'3.7644"N	104°40'5.6802"W	12.00	
8120.50†	68.478	347.346	7159.04	605.45	-502.14	-3253.49	3232986.69	1244406.04	40°00'4.6115"N	104°40'5.9990"W	12.00	
8220.50†	78.841	353.662	7187.16	699.78	-407.66	-3269.15	3232970.13	1244500.37	40°00'5.5453"N	104°40'6.2004"W	12.00	
8320.50†	89.327	359.537	7197.46	795.22	-308.55	-3274.99	3232963.35	1244599.42	40°00'6.5247"N	104°40'6.2756"W	12.00	
8326.91	90.000	359.908	7197.50†	801.28	-302.14	-3275.02	3232963.26	1244605.82	40°00'6.5880"N	104°40'6.2760"W	12.00	End of 3D Arc
8420.50†	90.000	359.908	7197.50	889.62	-208.55	-3275.18	3232962.22	1244699.41	40°00'7.5129"N	104°40'6.2781"W	0.00	

Planned Wellpath Report

BUFORD 33-5-1L (REV-A.0) PWP

Page 5 of 10

REFERENCE WELLPATH IDENTIFICATION			
Operator	CONFLUENCE RESOURCES	Well	BUFORD 33-5-1L
Field	WELD COUNTY (NAD83, TRUE NORTH)	API/Legal	
Facility	SEC.34-T01N-R65W	Wellbore	BUFORD 33-5-1L PWB
Slot	SLOT#03 BUFORD 33-5-1L (770'FSL & 794'FWL, SEC.34)		

WELLPATH DATA (186 stations) † = interpolated, ‡ = extrapolated station												
MD [ft]	Inclination [°]	Azimuth [°]	TVD [ft]	Vert Sect [ft]	North [ft]	East [ft]	Grid East [US ft]	Grid North [US ft]	Latitude	Longitude	DLS [°/100ft]	Comments
8520.50†	90.000	359.908	7197.50	984.01	-108.55	-3275.34	3232961.11	1244799.40	40°00'8.5012"N	104°40'6.2803"W	0.00	
8620.50†	90.000	359.908	7197.50	1078.41	-8.55	-3275.50	3232959.99	1244899.39	40°00'9.4894"N	104°40'6.2826"W	0.00	
8720.50†	90.000	359.908	7197.50	1172.80	91.45	-3275.66	3232958.88	1244999.38	40°00'10.4776"N	104°40'6.2848"W	0.00	
8820.50†	90.000	359.908	7197.50	1267.19	191.45	-3275.82	3232957.77	1245099.37	40°00'11.4659"N	104°40'6.2870"W	0.00	
8920.50†	90.000	359.908	7197.50	1361.58	291.45	-3275.98	3232956.66	1245199.36	40°00'12.4541"N	104°40'6.2893"W	0.00	
9020.50†	90.000	359.908	7197.50	1455.97	391.45	-3276.14	3232955.55	1245299.35	40°00'13.4423"N	104°40'6.2915"W	0.00	
9120.50†	90.000	359.908	7197.50	1550.36	491.45	-3276.30	3232954.44	1245399.34	40°00'14.4305"N	104°40'6.2937"W	0.00	
9220.50†	90.000	359.908	7197.50	1644.76	591.45	-3276.46	3232953.32	1245499.33	40°00'15.4188"N	104°40'6.2960"W	0.00	
9320.50†	90.000	359.908	7197.50	1739.15	691.45	-3276.62	3232952.21	1245599.32	40°00'16.4070"N	104°40'6.2982"W	0.00	
9420.50†	90.000	359.908	7197.50	1833.54	791.45	-3276.78	3232951.10	1245699.31	40°00'17.3952"N	104°40'6.3004"W	0.00	
9520.50†	90.000	359.908	7197.50	1927.93	891.45	-3276.94	3232949.99	1245799.30	40°00'18.3835"N	104°40'6.3027"W	0.00	
9620.50†	90.000	359.908	7197.50	2022.32	991.45	-3277.10	3232948.88	1245899.29	40°00'19.3717"N	104°40'6.3049"W	0.00	
9720.50†	90.000	359.908	7197.50	2116.72	1091.45	-3277.27	3232947.77	1245999.28	40°00'20.3599"N	104°40'6.3071"W	0.00	
9820.50†	90.000	359.908	7197.50	2211.11	1191.45	-3277.43	3232946.65	1246099.27	40°00'21.3482"N	104°40'6.3094"W	0.00	
9920.50†	90.000	359.908	7197.50	2305.50	1291.45	-3277.59	3232945.54	1246199.26	40°00'22.3364"N	104°40'6.3116"W	0.00	
10020.50†	90.000	359.908	7197.50	2399.89	1391.45	-3277.75	3232944.43	1246299.25	40°00'23.3246"N	104°40'6.3139"W	0.00	
10120.50†	90.000	359.908	7197.50	2494.28	1491.45	-3277.91	3232943.32	1246399.24	40°00'24.3128"N	104°40'6.3161"W	0.00	
10220.50†	90.000	359.908	7197.50	2588.67	1591.45	-3278.07	3232942.21	1246499.23	40°00'25.3011"N	104°40'6.3183"W	0.00	
10320.50†	90.000	359.908	7197.50	2683.07	1691.45	-3278.23	3232941.10	1246599.22	40°00'26.2893"N	104°40'6.3206"W	0.00	
10420.50†	90.000	359.908	7197.50	2777.46	1791.45	-3278.39	3232939.98	1246699.21	40°00'27.2775"N	104°40'6.3228"W	0.00	
10520.50†	90.000	359.908	7197.50	2871.85	1891.45	-3278.55	3232938.87	1246799.20	40°00'28.2658"N	104°40'6.3250"W	0.00	
10620.50†	90.000	359.908	7197.50	2966.24	1991.45	-3278.71	3232937.76	1246899.19	40°00'29.2540"N	104°40'6.3273"W	0.00	
10720.50†	90.000	359.908	7197.50	3060.63	2091.45	-3278.87	3232936.65	1246999.18	40°00'30.2422"N	104°40'6.3295"W	0.00	
10820.50†	90.000	359.908	7197.50	3155.03	2191.45	-3279.03	3232935.54	1247099.17	40°00'31.2305"N	104°40'6.3317"W	0.00	
10920.50†	90.000	359.908	7197.50	3249.42	2291.45	-3279.19	3232934.43	1247199.16	40°00'32.2187"N	104°40'6.3340"W	0.00	
11020.50†	90.000	359.908	7197.50	3343.81	2391.45	-3279.35	3232933.31	1247299.15	40°00'33.2069"N	104°40'6.3362"W	0.00	
11120.50†	90.000	359.908	7197.50	3438.20	2491.45	-3279.52	3232932.20	1247399.14	40°00'34.1951"N	104°40'6.3384"W	0.00	
11220.50†	90.000	359.908	7197.50	3532.59	2591.45	-3279.68	3232931.09	1247499.13	40°00'35.1834"N	104°40'6.3407"W	0.00	
11320.50†	90.000	359.908	7197.50	3626.98	2691.45	-3279.84	3232929.98	1247599.12	40°00'36.1716"N	104°40'6.3429"W	0.00	
11420.50†	90.000	359.908	7197.50	3721.38	2791.45	-3280.00	3232928.87	1247699.11	40°00'37.1598"N	104°40'6.3451"W	0.00	

Planned Wellpath Report

BUFORD 33-5-1L (REV-A.0) PWP

Page 6 of 10

REFERENCE WELLPATH IDENTIFICATION			
Operator	CONFLUENCE RESOURCES	Well	BUFORD 33-5-1L
Field	WELD COUNTY (NAD83, TRUE NORTH)	API/Legal	
Facility	SEC.34-T01N-R65W	Wellbore	BUFORD 33-5-1L PWB
Slot	SLOT#03 BUFORD 33-5-1L (770'FSL & 794'FWL, SEC.34)		

WELLPATH DATA (186 stations) † = interpolated, ‡ = extrapolated station												
MD [ft]	Inclination [°]	Azimuth [°]	TVD [ft]	Vert Sect [ft]	North [ft]	East [ft]	Grid East [US ft]	Grid North [US ft]	Latitude	Longitude	DLS [°/100ft]	Comments
11520.50†	90.000	359.908	7197.50	3815.77	2891.45	-3280.16	3232927.76	1247799.10	40°00'38.1481"N	104°40'6.3474"W	0.00	
11620.50†	90.000	359.908	7197.50	3910.16	2991.45	-3280.32	3232926.64	1247899.09	40°00'39.1363"N	104°40'6.3496"W	0.00	
11720.50†	90.000	359.908	7197.50	4004.55	3091.45	-3280.48	3232925.53	1247999.08	40°00'40.1245"N	104°40'6.3519"W	0.00	
11820.50†	90.000	359.908	7197.50	4098.94	3191.45	-3280.64	3232924.42	1248099.07	40°00'41.1127"N	104°40'6.3541"W	0.00	
11920.50†	90.000	359.908	7197.50	4193.34	3291.45	-3280.80	3232923.31	1248199.06	40°00'42.1010"N	104°40'6.3563"W	0.00	
12020.50†	90.000	359.908	7197.50	4287.73	3391.45	-3280.96	3232922.20	1248299.05	40°00'43.0892"N	104°40'6.3586"W	0.00	
12120.50†	90.000	359.908	7197.50	4382.12	3491.45	-3281.12	3232921.09	1248399.04	40°00'44.0774"N	104°40'6.3608"W	0.00	
12220.50†	90.000	359.908	7197.50	4476.51	3591.45	-3281.28	3232919.97	1248499.03	40°00'45.0657"N	104°40'6.3630"W	0.00	
12320.50†	90.000	359.908	7197.50	4570.90	3691.45	-3281.44	3232918.86	1248599.03	40°00'46.0539"N	104°40'6.3653"W	0.00	
12420.50†	90.000	359.908	7197.50	4665.29	3791.45	-3281.61	3232917.75	1248699.02	40°00'47.0421"N	104°40'6.3675"W	0.00	
12520.50†	90.000	359.908	7197.50	4759.69	3891.45	-3281.77	3232916.64	1248799.01	40°00'48.0304"N	104°40'6.3697"W	0.00	
12620.50†	90.000	359.908	7197.50	4854.08	3991.45	-3281.93	3232915.53	1248899.00	40°00'49.0186"N	104°40'6.3720"W	0.00	
12720.50†	90.000	359.908	7197.50	4948.47	4091.45	-3282.09	3232914.42	1248998.99	40°00'50.0068"N	104°40'6.3742"W	0.00	
12820.50†	90.000	359.908	7197.50	5042.86	4191.45	-3282.25	3232913.30	1249098.98	40°00'50.9950"N	104°40'6.3764"W	0.00	
12920.50†	90.000	359.908	7197.50	5137.25	4291.45	-3282.41	3232912.19	1249198.97	40°00'51.9833"N	104°40'6.3787"W	0.00	
13020.50†	90.000	359.908	7197.50	5231.65	4391.45	-3282.57	3232911.08	1249298.96	40°00'52.9715"N	104°40'6.3809"W	0.00	
13120.50†	90.000	359.908	7197.50	5326.04	4491.45	-3282.73	3232909.97	1249398.95	40°00'53.9597"N	104°40'6.3832"W	0.00	
13220.50†	90.000	359.908	7197.50	5420.43	4591.45	-3282.89	3232908.86	1249498.94	40°00'54.9480"N	104°40'6.3854"W	0.00	
13320.50†	90.000	359.908	7197.50	5514.82	4691.45	-3283.05	3232907.75	1249598.93	40°00'55.9362"N	104°40'6.3876"W	0.00	
13420.50†	90.000	359.908	7197.50	5609.21	4791.45	-3283.21	3232906.63	1249698.92	40°00'56.9244"N	104°40'6.3899"W	0.00	
13520.50†	90.000	359.908	7197.50	5703.60	4891.45	-3283.37	3232905.52	1249798.91	40°00'57.9126"N	104°40'6.3921"W	0.00	
13620.50†	90.000	359.908	7197.50	5798.00	4991.45	-3283.53	3232904.41	1249898.90	40°00'58.9009"N	104°40'6.3943"W	0.00	
13720.50†	90.000	359.908	7197.50	5892.39	5091.45	-3283.69	3232903.30	1249998.89	40°00'59.8891"N	104°40'6.3966"W	0.00	
13820.50†	90.000	359.908	7197.50	5986.78	5191.45	-3283.86	3232902.19	1250098.88	40°01'0.8773"N	104°40'6.3988"W	0.00	
13920.50†	90.000	359.908	7197.50	6081.17	5291.45	-3284.02	3232901.08	1250198.87	40°01'1.8656"N	104°40'6.4010"W	0.00	
14020.50†	90.000	359.908	7197.50	6175.56	5391.45	-3284.18	3232899.96	1250298.86	40°01'2.8538"N	104°40'6.4033"W	0.00	
14120.50†	90.000	359.908	7197.50	6269.96	5491.44	-3284.34	3232898.85	1250398.85	40°01'3.8420"N	104°40'6.4055"W	0.00	
14220.50†	90.000	359.908	7197.50	6364.35	5591.44	-3284.50	3232897.74	1250498.84	40°01'4.8302"N	104°40'6.4077"W	0.00	
14320.50†	90.000	359.908	7197.50	6458.74	5691.44	-3284.66	3232896.63	1250598.83	40°01'5.8185"N	104°40'6.4100"W	0.00	
14420.50†	90.000	359.908	7197.50	6553.13	5791.44	-3284.82	3232895.52	1250698.82	40°01'6.8067"N	104°40'6.4122"W	0.00	

Planned Wellpath Report

BUFORD 33-5-1L (REV-A.0) PWP

Page 7 of 10

REFERENCE WELLPATH IDENTIFICATION			
Operator	CONFLUENCE RESOURCES	Well	BUFORD 33-5-1L
Field	WELD COUNTY (NAD83, TRUE NORTH)	API/Legal	
Facility	SEC.34-T01N-R65W	Wellbore	BUFORD 33-5-1L PWB
Slot	SLOT#03 BUFORD 33-5-1L (770'FSL & 794'FWL, SEC.34)		

WELLPATH DATA (186 stations) † = interpolated, ‡ = extrapolated station												
MD [ft]	Inclination [°]	Azimuth [°]	TVD [ft]	Vert Sect [ft]	North [ft]	East [ft]	Grid East [US ft]	Grid North [US ft]	Latitude	Longitude	DLS [°/100ft]	Comments
14520.50†	90.000	359.908	7197.50	6647.52	5891.44	-3284.98	3232894.41	1250798.81	40°01'7.7949"N	104°40'6.4145"W	0.00	
14620.50†	90.000	359.908	7197.50	6741.91	5991.44	-3285.14	3232893.29	1250898.80	40°01'8.7832"N	104°40'6.4167"W	0.00	
14720.50†	90.000	359.908	7197.50	6836.31	6091.44	-3285.30	3232892.18	1250998.79	40°01'9.7714"N	104°40'6.4189"W	0.00	
14820.50†	90.000	359.908	7197.50	6930.70	6191.44	-3285.46	3232891.07	1251098.78	40°01'10.7596"N	104°40'6.4212"W	0.00	
14920.50†	90.000	359.908	7197.50	7025.09	6291.44	-3285.62	3232889.96	1251198.77	40°01'11.7478"N	104°40'6.4234"W	0.00	
15020.50†	90.000	359.908	7197.50	7119.48	6391.44	-3285.78	3232888.85	1251298.76	40°01'12.7361"N	104°40'6.4256"W	0.00	
15120.50†	90.000	359.908	7197.50	7213.87	6491.44	-3285.95	3232887.74	1251398.75	40°01'13.7243"N	104°40'6.4279"W	0.00	
15220.50†	90.000	359.908	7197.50	7308.27	6591.44	-3286.11	3232886.62	1251498.74	40°01'14.7125"N	104°40'6.4301"W	0.00	
15320.50†	90.000	359.908	7197.50	7402.66	6691.44	-3286.27	3232885.51	1251598.73	40°01'15.7008"N	104°40'6.4323"W	0.00	
15420.50†	90.000	359.908	7197.50	7497.05	6791.44	-3286.43	3232884.40	1251698.72	40°01'16.6890"N	104°40'6.4346"W	0.00	
15520.50†	90.000	359.908	7197.50	7591.44	6891.44	-3286.59	3232883.29	1251798.71	40°01'17.6772"N	104°40'6.4368"W	0.00	
15620.50†	90.000	359.908	7197.50	7685.83	6991.44	-3286.75	3232882.18	1251898.70	40°01'18.6654"N	104°40'6.4391"W	0.00	
15720.50†	90.000	359.908	7197.50	7780.23	7091.44	-3286.91	3232881.07	1251998.69	40°01'19.6537"N	104°40'6.4413"W	0.00	
15820.50†	90.000	359.908	7197.50	7874.62	7191.44	-3287.07	3232879.95	1252098.68	40°01'20.6419"N	104°40'6.4435"W	0.00	
15920.50†	90.000	359.908	7197.50	7969.01	7291.44	-3287.23	3232878.84	1252198.67	40°01'21.6301"N	104°40'6.4458"W	0.00	
16020.50†	90.000	359.908	7197.50	8063.40	7391.44	-3287.39	3232877.73	1252298.66	40°01'22.6184"N	104°40'6.4480"W	0.00	
16120.50†	90.000	359.908	7197.50	8157.79	7491.44	-3287.55	3232876.62	1252398.65	40°01'23.6066"N	104°40'6.4502"W	0.00	
16220.50†	90.000	359.908	7197.50	8252.18	7591.44	-3287.71	3232875.51	1252498.64	40°01'24.5948"N	104°40'6.4525"W	0.00	
16320.50†	90.000	359.908	7197.50	8346.58	7691.44	-3287.87	3232874.40	1252598.63	40°01'25.5830"N	104°40'6.4547"W	0.00	
16420.50†	90.000	359.908	7197.50	8440.97	7791.44	-3288.03	3232873.28	1252698.62	40°01'26.5713"N	104°40'6.4569"W	0.00	
16520.50†	90.000	359.908	7197.50	8535.36	7891.44	-3288.20	3232872.17	1252798.62	40°01'27.5595"N	104°40'6.4592"W	0.00	
16620.50†	90.000	359.908	7197.50	8629.75	7991.44	-3288.36	3232871.06	1252898.61	40°01'28.5477"N	104°40'6.4614"W	0.00	
16720.50†	90.000	359.908	7197.50	8724.14	8091.44	-3288.52	3232869.95	1252998.60	40°01'29.5360"N	104°40'6.4637"W	0.00	
16820.50†	90.000	359.908	7197.50	8818.54	8191.44	-3288.68	3232868.84	1253098.59	40°01'30.5242"N	104°40'6.4659"W	0.00	
16920.50†	90.000	359.908	7197.50	8912.93	8291.44	-3288.84	3232867.73	1253198.58	40°01'31.5124"N	104°40'6.4681"W	0.00	
17020.50†	90.000	359.908	7197.50	9007.32	8391.44	-3289.00	3232866.61	1253298.57	40°01'32.5006"N	104°40'6.4704"W	0.00	
17120.50†	90.000	359.908	7197.50	9101.71	8491.44	-3289.16	3232865.50	1253398.56	40°01'33.4889"N	104°40'6.4726"W	0.00	
17220.50†	90.000	359.908	7197.50	9196.10	8591.44	-3289.32	3232864.39	1253498.55	40°01'34.4771"N	104°40'6.4748"W	0.00	
17320.50†	90.000	359.908	7197.50	9290.49	8691.44	-3289.48	3232863.28	1253598.54	40°01'35.4653"N	104°40'6.4771"W	0.00	
17420.50†	90.000	359.908	7197.50	9384.89	8791.44	-3289.64	3232862.17	1253698.53	40°01'36.4536"N	104°40'6.4793"W	0.00	

Planned Wellpath Report

BUFORD 33-5-1L (REV-A.0) PWP

Page 8 of 10

REFERENCE WELLPATH IDENTIFICATION			
Operator	CONFLUENCE RESOURCES	Well	BUFORD 33-5-1L
Field	WELD COUNTY (NAD83, TRUE NORTH)	API/Legal	
Facility	SEC.34-T01N-R65W	Wellbore	BUFORD 33-5-1L PWB
Slot	SLOT#03 BUFORD 33-5-1L (770'FSL & 794'FWL, SEC.34)		

WELLPATH DATA (186 stations) † = interpolated, ‡ = extrapolated station												
MD [ft]	Inclination [°]	Azimuth [°]	TVD [ft]	Vert Sect [ft]	North [ft]	East [ft]	Grid East [US ft]	Grid North [US ft]	Latitude	Longitude	DLS [°/100ft]	Comments
17520.50†	90.000	359.908	7197.50	9479.28	8891.44	-3289.80	3232861.06	1253798.52	40°01'37.4418"N	104°40'6.4815"W	0.00	
17620.50†	90.000	359.908	7197.50	9573.67	8991.44	-3289.96	3232859.94	1253898.51	40°01'38.4300"N	104°40'6.4838"W	0.00	
17720.50†	90.000	359.908	7197.50	9668.06	9091.44	-3290.12	3232858.83	1253998.50	40°01'39.4182"N	104°40'6.4860"W	0.00	
17820.50†	90.000	359.908	7197.50	9762.45	9191.44	-3290.29	3232857.72	1254098.49	40°01'40.4065"N	104°40'6.4883"W	0.00	
17920.50†	90.000	359.908	7197.50	9856.85	9291.44	-3290.45	3232856.61	1254198.48	40°01'41.3947"N	104°40'6.4905"W	0.00	
17987.82	90.000	359.908	7197.50‡	9920.39	9358.76	-3290.55	3232855.86	1254265.80	40°01'42.0600"N	104°40'6.4920"W	0.00	End of Tangent

HOLE & CASING SECTIONS - Ref Wellbore: BUFORD 33-5-1L PWB Ref Wellpath: BUFORD 33-5-1L (REV-A.0) PWP									
String/Diameter	Start MD [ft]	End MD [ft]	Interval [ft]	Start TVD [ft]	End TVD [ft]	Start N/S [ft]	Start E/W [ft]	End N/S [ft]	End E/W [ft]
13.5in Open Hole	20.50	1500.00	1479.50	20.50	1479.82	0.00	0.00	-43.04	-167.32
9.625in Casing Surface	20.50	1500.00	1479.50	20.50	1479.82	0.00	0.00	-43.04	-167.32
8.5in Open Hole	1500.00	17987.82	16487.82	1479.82	7197.50	-43.04	-167.32	9358.76	-3290.55

Planned Wellpath Report

BUFORD 33-5-1L (REV-A.0) PWP

Page 9 of 10

REFERENCE WELLPATH IDENTIFICATION			
Operator	CONFLUENCE RESOURCES	Well	BUFORD 33-5-1L
Field	WELD COUNTY (NAD83, TRUE NORTH)	API/Legal	
Facility	SEC.34-T01N-R65W	Wellbore	BUFORD 33-5-1L PWB
Slot	SLOT#03 BUFORD 33-5-1L (770'FSL & 794'FWL,SEC.34)		

TARGETS									
Name	MD [ft]	TVD [ft]	North [ft]	East [ft]	Grid East [US ft]	Grid North [US ft]	Latitude	Longitude	Shape
SEC 28-T01N-R65W	N/A	0.00	0.00	-25.21	3236209.93	1244938.84	40°00'9.5760"N	104°39'24.5160"W	polygon
	2D Polygon: dimensions not calculated								
SEC 33-T01N-R65W	N/A	0.00	0.00	-25.21	3236209.93	1244938.84	40°00'9.5760"N	104°39'24.5160"W	polygon
	2D Polygon: dimensions not calculated								
SEC 34-T01N-R65W	N/A	0.00	0.00	-25.21	3236209.93	1244938.84	40°00'9.5760"N	104°39'24.5160"W	polygon
	2D Polygon: dimensions not calculated								
2) BUFORD 33-5-1L BHL REV-1 (470'FNL & 2483'FEL,SEC.28)	17987.82	7197.50	9358.76	-3290.55	3232855.86	1254265.80	40°01'42.0600"N	104°40'6.4920"W	point
	8326.91	7197.50	-302.14	-3275.02	3232963.26	1244605.82	40°00'6.5880"N	104°40'6.2760"W	point
1) BUFORD 33-5-1L LP REV-1 (470'FSL & 2483'FEL,SEC.33)									

SURVEY PROGRAM - Ref Wellbore: BUFORD 33-5-1L PWB Ref Wellpath: BUFORD 33-5-1L (REV-A.0) PWP				
Start MD [ft]	End MD [ft]	Positional Uncertainty Model	Log Name/Comment	Wellbore
20.50	1500.00	BH NaviTrak (2019) (Standard)		BUFORD 33-5-1L PWB
1500.00	17994.42	BH AutoTrak Curve/eXpress (2019) (Standard)		BUFORD 33-5-1L PWB

Planned Wellpath Report

BUFORD 33-5-1L (REV-A.0) PWP

Page 10 of 10

REFERENCE WELLPATH IDENTIFICATION			
Operator	CONFLUENCE RESOURCES	Well	BUFORD 33-5-1L
Field	WELD COUNTY (NAD83, TRUE NORTH)	API/Legal	
Facility	SEC.34-T01N-R65W	Wellbore	BUFORD 33-5-1L PWB
Slot	SLOT#03 BUFORD 33-5-1L (770'FSL & 794'FWL, SEC.34)		

DESIGN COMMENTS				
MD [ft]	Inclination [°]	Azimuth [°]	TVD [ft]	Comment
20.50	0.000	255.576	20.50	Tie On
500.00	0.000	255.576	500.00	End of Tangent
1982.46	29.649	255.576	1917.18	End of Build
7518.29	29.649	255.576	6728.20	End of Tangent
8326.91	90.000	359.908	7197.50	End of 3D Arc
17987.82	90.000	359.908	7197.50	End of Tangent