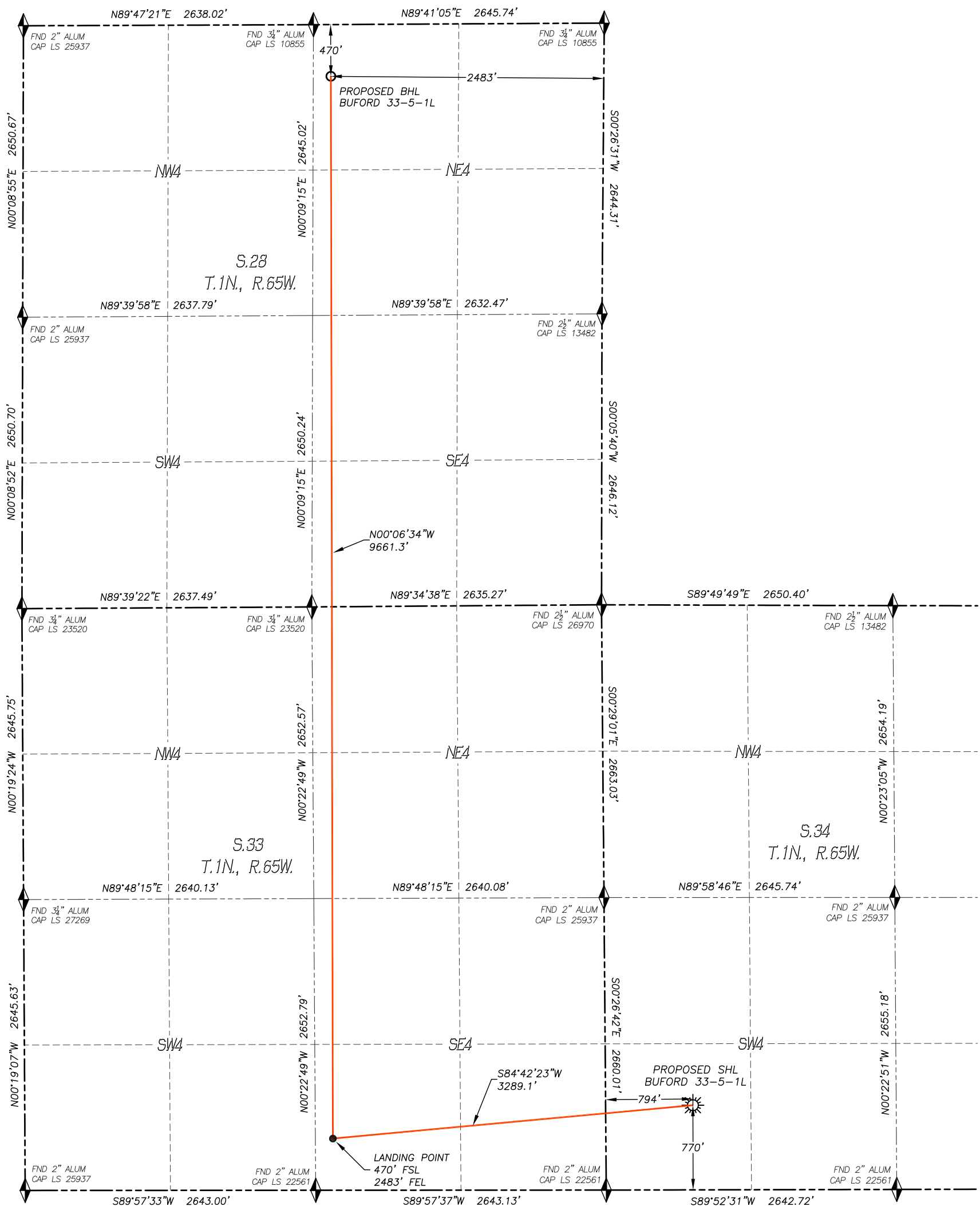
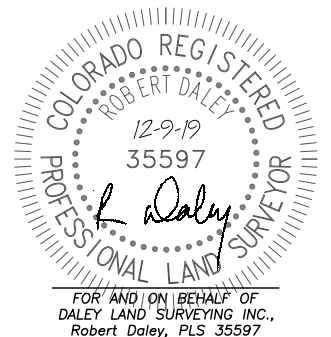


SECTION: 34
TOWNSHIP: 1N
RANGE: 65W



NOTES:

- 1) BEARINGS FOR THIS MAP ARE ASSUMED AND BASED UPON GPS OBSERVATIONS MADE BETWEEN MONUMENTS LOCATED AT THE SOUTHWEST CORNER AND THE WEST QUARTER CORNER OF SECTION 34, T.1N., R.65W.
- 2) HORIZONTAL DATUM IS NAD83.
- 3) VERTICAL DATUM IS NAVD88 AND ORIGINATES FROM THE LOCAL C.O.R.S. NETWORK, UTILIZING THE GEOID12A MODEL.
- 4) SEE LOCATION DRAWING FOR VISIBLE IMPROVEMENTS WITHIN 500' OF PROPOSED DISTURBED AREA.
- 5) SURFACE USE: AGRICULTURAL.
- 6) INST. OPERATOR: KYLE DALEY







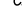

NEAREST CULTURAL ITEMS:


BUILDING:	933'± SW
BUILDING UNIT:	1133'± SW
HIGH OCC. BLD. UNIT:	5280'+
DES. OUTSIDE ACTIVITY AREA:	5280'+
PUBLIC ROAD:	754'± S
ABOVE GROUND UTILITY:	1105'± SW
RAILROAD:	5280'+
PROPERTY LINE:	527'± E
SCHOOL FACILITY:	5280'+
SCHOOL PROPERTY LINE:	5280'+
CHILD CARE CENTER:	5280'+


NAD 83 LATITUDE AND LONGITUDE

<u>SURFACE LOCATION:</u>	<u>LANDING POINT/TPZ:</u>
LATITUDE: N40.00266°	LATITUDE: N40.00183°
LONGITUDE: W104.65672°	LONGITUDE: W104.66841°
ELEV: 5136'	
PDOP: 1.4	<u>BOTTOM HOLE:</u>
QTR/QTR: SW4/SW4	LATITUDE: N40.02835°
	LONGITUDE: W104.66847°

LEGEND

	FOUND MONUMENT
	CALCULATED POSITION
	PROPOSED WELL
	BOTTOM HOLE
	ABANDONED WELL
	EXISTING WELL





SCALE: 1" = 1000'



**Confluence
RESOURCES**

**DALEY LAND
SURVEYING, INC.**
PARKER, COLORADO
303.953.9841

\\Survey\1702003\Drawings\Buford 33-5-1L.dwg