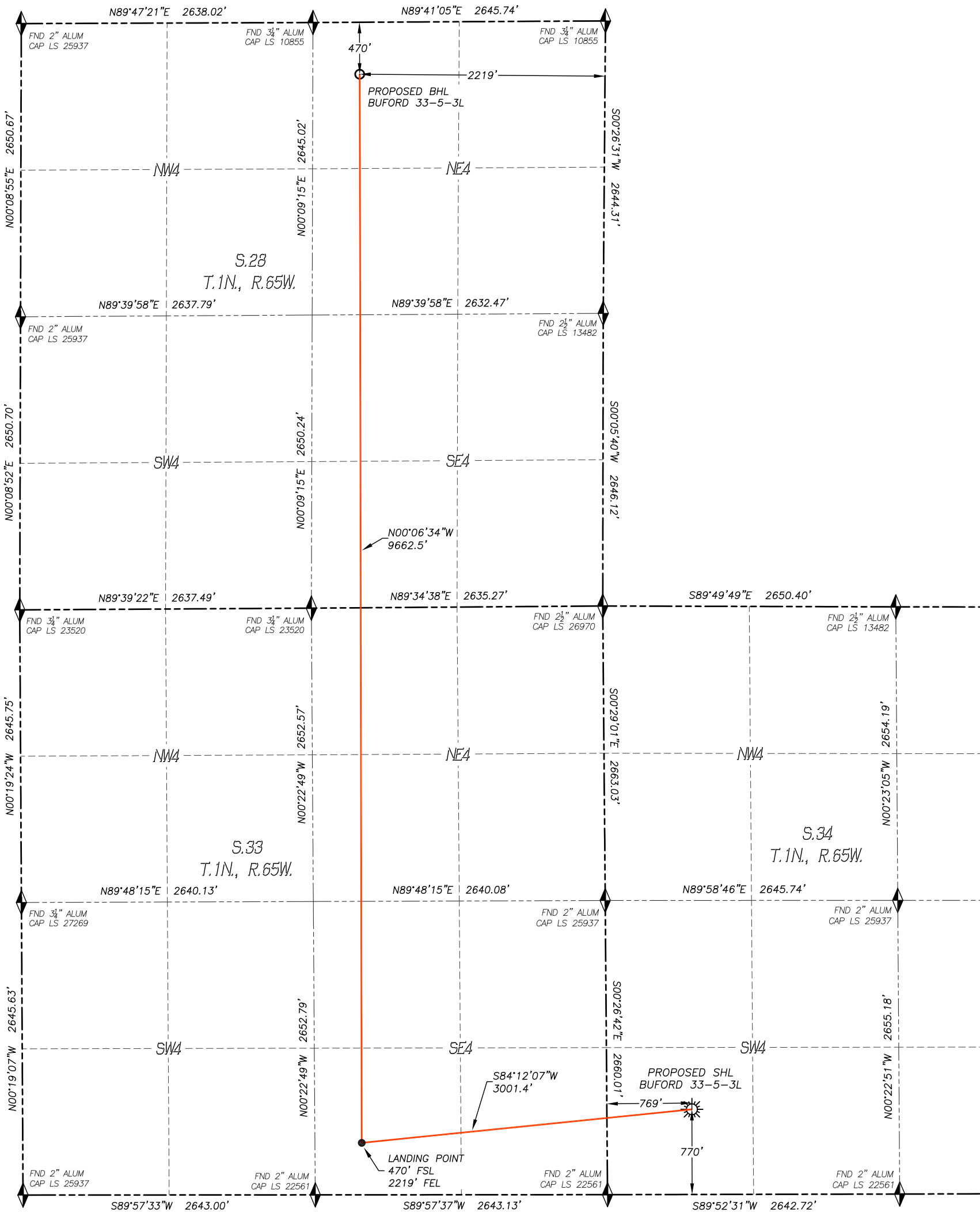


WELL LOCATION CERTIFICATE  
BUFORD 33-5-3L

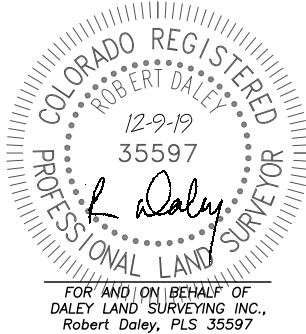
SECTION: 34  
TOWNSHIP: 1N  
RANGE: 65W



IN ACCORDANCE WITH A REQUEST FROM CONFLUENCE RESOURCES, DALEY LAND SURVEYING, INC. HAS DETERMINED THE SURFACE LOCATION OF THE BUFORD 33-5-3L WELL TO BE 770' FSL, 769' FWL, AS MEASURED AT NINETY (90) DEGREES FROM THE SECTION LINES OF SECTION 34, TOWNSHIP 1 NORTH, RANGE 65 WEST AND THE BOTTOM HOLE LOCATION TO BE 470' FNL, 2219' FEL, AS MEASURED AT NINETY (90) DEGREES FROM THE SECTION LINES OF SECTION 28, TOWNSHIP 1 NORTH, RANGE 65 WEST, OF THE 6TH PRINCIPAL MERIDIAN, WELD COUNTY, COLORADO.

I HEREBY STATE THAT THIS WELL LOCATION CERTIFICATE WAS PREPARED BY ME OR UNDER MY DIRECT SUPERVISION, THAT THE WORK WAS COMPLETED ON 5/30/2017 FOR AND ON BEHALF OF CONFLUENCE RESOURCES, AND THAT THIS MAP DOES NOT REPRESENT A BOUNDARY SURVEY, IT IS NOT A LAND SURVEY PLAT OR AN IMPROVEMENT SURVEY PLAT AND IT IS NOT TO BE RELIED UPON FOR THE ESTABLISHMENT OF FENCE, BUILDING OR OTHER FUTURE IMPROVEMENT LINES.

- NOTES:**
- BEARINGS FOR THIS MAP ARE ASSUMED AND BASED UPON GPS OBSERVATIONS MADE BETWEEN MONUMENTS LOCATED AT THE SOUTHWEST CORNER AND THE WEST QUARTER CORNER OF SECTION 34, T.1N., R.65W.
  - HORIZONTAL DATUM IS NAD83.
  - VERTICAL DATUM IS NAVD88 AND ORIGINATES FROM THE LOCAL C.O.R.S. NETWORK, UTILIZING THE GEOID12A MODEL.
  - SEE LOCATION DRAWING FOR VISIBLE IMPROVEMENTS WITHIN 500' OF PROPOSED DISTURBED AREA.
  - SURFACE USE: AGRICULTURAL.
  - INST. OPERATOR: KYLE DALEY



FOR AND ON BEHALF OF  
DALEY LAND SURVEYING INC.,  
Robert Daley, PLS 35597

NEAREST CULTURAL ITEMS:	
BUILDING:	910'± SW
BUILDING UNIT:	1110'± SW
HIGH OCC. BLD. UNIT:	5280'+
DES. OUTSIDE ACTIVITY AREA:	5280'+
PUBLIC ROAD:	754'± S
ABOVE GROUND UTILITY:	1086'± SW
RAILROAD:	5280'+
PROPERTY LINE:	552'± E
SCHOOL FACILITY:	5280'+
SCHOOL PROPERTY LINE:	5280'+
CHILD CARE CENTER:	5280'+

NAD 83 LATITUDE AND LONGITUDE	
<b>SURFACE LOCATION:</b>	
LATITUDE:	N40.00266°
LONGITUDE:	W104.65681°
ELEV:	5136'
PDOP:	1.4
QTR/QTR:	SW4/SW4
<b>LANDING POINT/TPZ:</b>	
LATITUDE:	N40.00183°
LONGITUDE:	W104.66746°
<b>BOTTOM HOLE:</b>	
LATITUDE:	N40.02835°
LONGITUDE:	W104.66753°

- LEGEND**
- FOUND MONUMENT
  - CALCULATED POSITION
  - PROPOSED WELL
  - BOTTOM HOLE
  - ABANDONED WELL
  - EXISTING WELL

