

CONFLUENCE RESOURCES

Location:	COLORADO	Slot:	SLOT#02 BUFORD 33-5-3L (770'FSL & 769'FWL, SEC.34)
Field:	WELD COUNTY (NAD83, TRUE NORTH)	Well:	BUFORD 33-5-3L
Facility:	SEC.34-T01N-R65W	Wellbore:	BUFORD 33-5-3L PWB
Plot reference wellpath is BUFORD 33-5-3L (REV-A.0) PWP			
True vertical depths are referenced to RIG (20.5') (RKB)		Grid System: NAD83 / Lambert Colorado SP, Northern Zone (501), US feet	
Reference wellpath measured depths are referenced to RIG (20.5') (RKB)		North Reference: True north	
RIG (20.5') (RKB) to Mean Sea Level: 5156.5 feet		Scale: True distance	
Mean Sea Level to Mud line (At Slot: SLOT#02 BUFORD 33-5-3L (770'FSL & 769'FWL, SEC.34)): 0 feet		Coordinates are in feet referenced to Slot	
Offset wellpath MDs are referenced to each path's default MD datum		Depths are in feet	
		Created by: adamkitt on 2020-01-27; Database: Denver	

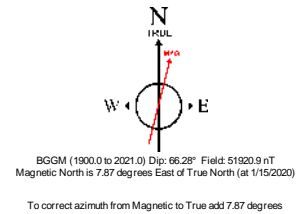
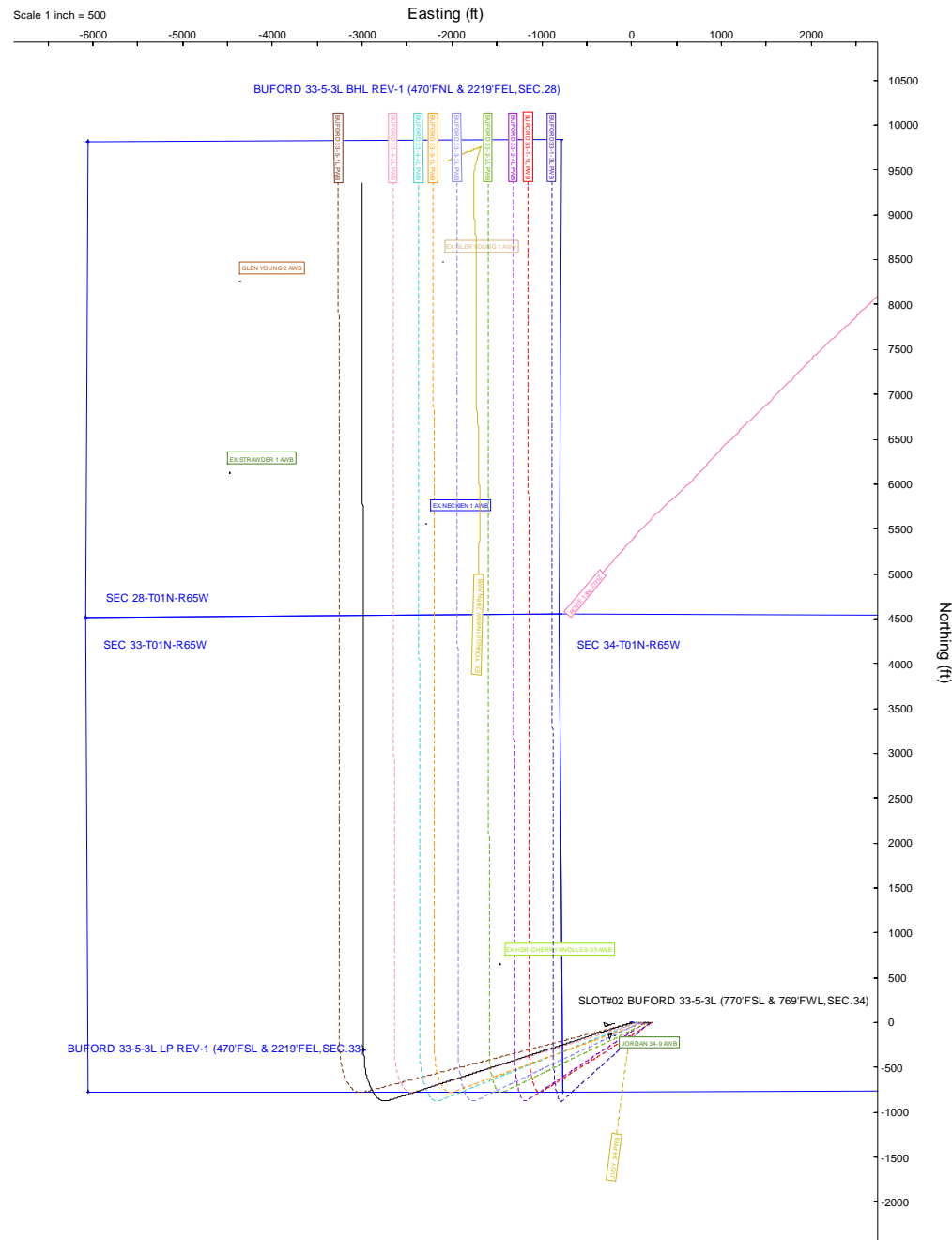
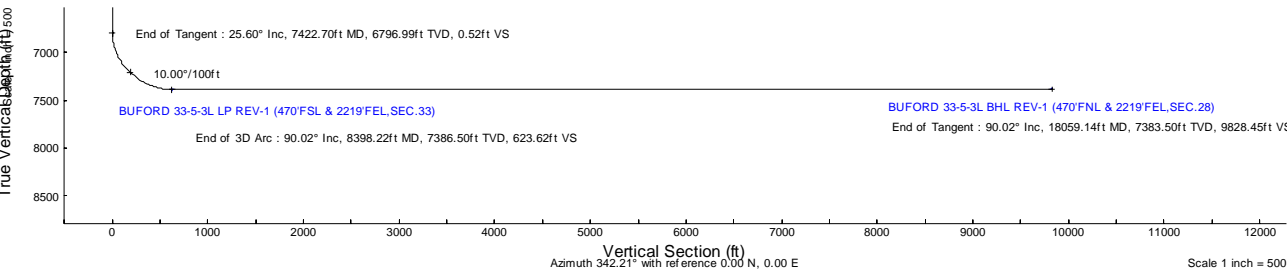
Location Information				
Facility Name		Grid East (US ft)	Grid North (US ft)	Latitude
SEC.34-T01N-R65W		3236186.141	1244789.256	40°00'8.1000"N
Slot		Local N (ft)	Local E (ft)	Latitude
SLOT#02 BUFORD 33-5-3L (770'FSL & 769'FWL, SEC.34)		149.36	25.21	40°00'9.5760"N
RIG (20.5') (RKB) to Mud line (At Slot: SLOT#02 BUFORD 33-5-3L (770'FSL & 769'FWL, SEC.34))				5156.5ft
Mean Sea Level to Mud line (At Slot: SLOT#02 BUFORD 33-5-3L (770'FSL & 769'FWL, SEC.34))				0ft
RIG (20.5') (RKB) to Mean Sea Level				5156.5ft

Targets								
Name	MD (ft)	TVD (ft)	Local N (ft)	Local E (ft)	Grid East (US ft)	Grid North (US ft)	Latitude	Longitude
SEC.28-T01N-R65W	N/A	0.00	0.00	0.00	3236209.93	1244938.84	40°00'9.5760"N	104°39'24.5160"W
SEC.33-T01N-R65W	N/A	0.00	0.00	0.00	3236209.93	1244938.84	40°00'9.5760"N	104°39'24.5160"W
SEC.34-T01N-R65W	N/A	0.00	0.00	0.00	3236209.93	1244938.84	40°00'9.5760"N	104°39'24.5160"W
SEC.28-T01N-R65W NE CORNER	N/A	0.00	9839.42	-778.52	3235337.92	1254770.06	40°01'46.8120"N	104°39'34.5240"W
SEC.28-T01N-R65W NW CORNER	N/A	0.00	9818.29	-6060.11	3230056.96	1254688.71	40°01'46.5960"N	104°40'42.4200"W
SEC.33-T01N-R65W NW CORNER	N/A	0.00	4517.90	-6075.41	3230092.06	1249398.61	40°00'54.2160"N	104°40'42.6000"W
SEC.33-T01N-R65W SW CORNER	N/A	0.00	-771.55	-6048.68	3230169.07	1244109.84	40°00'1.9440"N	104°40'42.2400"W
SEC.34-T01N-R65W NE CORNER	N/A	0.00	4539.43	4492.83	3240659.23	1249520.62	40°00'54.4320"N	104°38'26.7720"W
SEC.34-T01N-R65W NW CORNER	N/A	0.00	4549.96	-803.89	3235362.84	1249480.79	40°00'54.5400"N	104°39'34.8480"W
SEC.34-T01N-R65W SE CORNER	N/A	0.00	-760.95	4521.80	3240738.60	1244220.95	40°00'2.0520"N	104°38'26.4120"W
SEC.34-T01N-R65W SW CORNER	N/A	0.00	-768.63	-762.04	3235455.26	1244163.02	40°00'1.9800"N	104°39'34.3080"W
BUFORD 33-5-3L BHL REV-1 (470'FSL & 2219'FEL, SEC.28)	18059.14	7383.50	9358.73	-3002.11	3233119.08	1254268.27	40°01'42.0600"N	104°40'3.1080"W
BUFORD 33-5-3L LP REV-1 (470'FSL & 2219'FEL, SEC.33)	8398.22	7386.50	-302.18	-2983.66	3233229.39	1244608.32	40°00'6.5880"N	104°40'2.8560"W

Tie-On Position								
MD (ft)	Inc (°)	Az (°)	TVD (ft)	Local N (ft)	Local E (ft)	Grid East (US ft)	Grid North (US ft)	Latitude
20.50	0.000	252.225	20.50	0.00	0.00	3236209.93	1244938.84	40°00'9.5760"N

Bottom Hole Location								
MD (ft)	Inc (°)	Az (°)	TVD (ft)	Local N (ft)	Local E (ft)	Grid East (US ft)	Grid North (US ft)	Latitude
18059.14	90.018	359.891	7383.50	9358.73	-3002.11	3233119.08	1254268.27	40°01'42.0600"N

Well Profile Data								
Design Comment	MD (ft)	Inc (°)	Az (°)	TVD (ft)	Local N (ft)	Local E (ft)	DLS (°/100ft)	VS (ft)
Tie On	20.50	0.000	252.225	20.50	0.00	0.00	0.00	0.00
End of Tangent	200.00	0.000	252.225	200.00	0.00	0.00	0.00	0.00
End of Build	1480.18	25.604	252.225	1438.00	-85.88	-267.88	2.00	0.05
End of Tangent	7422.70	25.604	252.225	6796.99	-869.84	-2713.31	0.00	0.52
End of 3D Arc	8398.22	90.018	359.891	7386.50	-302.18	-2983.66	10.00	623.62
End of Tangent	18059.14	90.018	359.891	7383.50	9358.73	-3002.11	0.00	9828.45



# Planned Wellpath Report

BUFORD 33-5-3L (REV-A.0) PWP

Page 1 of 11

REFERENCE WELLPATH IDENTIFICATION			
Operator	CONFLUENCE RESOURCES	Well	BUFORD 33-5-3L
Field	WELD COUNTY (NAD83, TRUE NORTH)	API/Legal	
Facility	SEC.34-T01N-R65W	Wellbore	BUFORD 33-5-3L PWB
Slot	SLOT#02 BUFORD 33-5-3L (770'FSL & 769'FWL,SEC.34)		

REPORT SETUP INFORMATION			
Projection System	NAD83 / Lambert Colorado SP, Northern Zone (501), US feet	Software System	WellArchitect® 6.0
North Reference	True	User	Adamkat
Scale	0.999966	Report Generated	1/24/2020 at 1:38:48 PM
Convergence at slot	0.54° East	Database	Denver

WELLPATH LOCATION						
	Local coordinates		Grid coordinates		Geographic coordinates	
	North[ft]	East[ft]	Easting[US ft]	Northing[US ft]	Latitude	Longitude
Slot Location	149.36	25.21	3236209.93	1244938.84	40°00'9.5760"N	104°39'24.5160"W
Facility Reference Pt			3236186.14	1244789.26	40°00'8.1000"N	104°39'24.8400"W
Field Reference Pt			3230456.90	1245096.09	40°00'11.6640"N	104°40'38.4240"W

WELLPATH DATUM			
Calculation method	Minimum curvature	RIG (20.5') (RKB) to Facility Vertical Datum	5156.50ft
Horizontal Reference Pt	Slot	RIG (20.5') (RKB) to Mean Sea Level	5156.50ft
Vertical Reference Pt	RIG (20.5') (RKB)	RIG (20.5') (RKB) to Mud Line at Slot (SLOT#02 BUFORD 33-5-3L (770'FSL & 769'FWL,SEC.34))	5156.50ft
MD Reference Pt	RIG (20.5') (RKB)	Section Origin	N 0.00, E 0.00 ft
Field Vertical Reference	Mean Sea Level	Section Azimuth	342.21°

# Planned Wellpath Report

BUFORD 33-5-3L (REV-A.0) PWP

Page 2 of 11

REFERENCE WELLPATH IDENTIFICATION			
Operator	CONFLUENCE RESOURCES	Well	BUFORD 33-5-3L
Field	WELD COUNTY (NAD83, TRUE NORTH)	API/Legal	
Facility	SEC.34-T01N-R65W	Wellbore	BUFORD 33-5-3L PWB
Slot	SLOT#02 BUFORD 33-5-3L (770'FSL & 769'FWL, SEC.34)		

WELLPATH DATA (187 stations) † = interpolated, ‡ = extrapolated station												
MD [ft]	Inclination [°]	Azimuth [°]	TVD [ft]	Vert Sect [ft]	North [ft]	East [ft]	Grid East [US ft]	Grid North [US ft]	Latitude	Longitude	DLS [°/100ft]	Comments
0.00†	0.000	252.225	0.00	0.00	0.00	0.00	3236209.93	1244938.84	40°00'9.5760"N	104°39'24.5160"W	0.00	
20.50	0.000	252.225	20.50	0.00	0.00	0.00	3236209.93	1244938.84	40°00'9.5760"N	104°39'24.5160"W	0.00	Tie On
120.50†	0.000	252.225	120.50	0.00	0.00	0.00	3236209.93	1244938.84	40°00'9.5760"N	104°39'24.5160"W	0.00	
200.00	0.000	252.225	200.00	0.00	0.00	0.00	3236209.93	1244938.84	40°00'9.5760"N	104°39'24.5160"W	0.00	End of Tangent
220.50†	0.410	252.225	220.50	0.00	-0.02	-0.07	3236209.86	1244938.82	40°00'9.5758"N	104°39'24.5169"W	2.00	
320.50†	2.410	252.225	320.46	0.00	-0.77	-2.41	3236207.53	1244938.05	40°00'9.5684"N	104°39'24.5470"W	2.00	
420.50†	4.410	252.225	420.28	0.00	-2.59	-8.08	3236201.88	1244936.18	40°00'9.5504"N	104°39'24.6198"W	2.00	
520.50†	6.410	252.225	519.83	0.00	-5.47	-17.05	3236192.93	1244933.21	40°00'9.5220"N	104°39'24.7352"W	2.00	
620.50†	8.410	252.225	618.99	0.01	-9.40	-29.34	3236180.69	1244929.16	40°00'9.4831"N	104°39'24.8930"W	2.00	
720.50†	10.410	252.225	717.64	0.01	-14.40	-44.90	3236165.17	1244924.02	40°00'9.4337"N	104°39'25.0930"W	2.00	
820.50†	12.410	252.225	815.66	0.01	-20.43	-63.74	3236146.39	1244917.80	40°00'9.3741"N	104°39'25.3351"W	2.00	
920.50†	14.410	252.225	912.93	0.02	-27.51	-85.82	3236124.38	1244910.51	40°00'9.3041"N	104°39'25.6189"W	2.00	
1020.50†	16.410	252.225	1009.33	0.02	-35.63	-111.13	3236099.15	1244902.16	40°00'9.2239"N	104°39'25.9440"W	2.00	
1120.50†	18.410	252.225	1104.74	0.03	-44.76	-139.62	3236070.75	1244892.76	40°00'9.1337"N	104°39'26.3101"W	2.00	
1220.50†	20.410	252.225	1199.05	0.03	-54.90	-171.26	3236039.21	1244882.31	40°00'9.0334"N	104°39'26.7167"W	2.00	
1320.50†	22.410	252.225	1292.15	0.04	-66.05	-206.02	3236004.55	1244870.84	40°00'8.9233"N	104°39'27.1634"W	2.00	
1420.50†	24.410	252.225	1383.91	0.05	-78.18	-243.85	3235966.84	1244858.35	40°00'8.8034"N	104°39'27.6496"W	2.00	
1480.18	25.604	252.225	1438.00	0.05	-85.88	-267.88	3235942.89	1244850.42	40°00'8.7273"N	104°39'27.9583"W	2.00	End of Build
1520.50†	25.604	252.225	1474.36	0.05	-91.20	-284.47	3235926.35	1244844.95	40°00'8.6748"N	104°39'28.1715"W	0.00	
1620.50†	25.604	252.225	1564.54	0.06	-104.39	-325.62	3235885.33	1244831.37	40°00'8.5444"N	104°39'28.7003"W	0.00	
1720.50†	25.604	252.225	1654.72	0.07	-117.58	-366.77	3235844.31	1244817.78	40°00'8.4140"N	104°39'29.2291"W	0.00	
1820.50†	25.604	252.225	1744.90	0.08	-130.77	-407.93	3235803.28	1244804.20	40°00'8.2836"N	104°39'29.7579"W	0.00	
1920.50†	25.604	252.225	1835.08	0.09	-143.97	-449.08	3235762.26	1244790.62	40°00'8.1533"N	104°39'30.2867"W	0.00	
2020.50†	25.604	252.225	1925.26	0.09	-157.16	-490.23	3235721.24	1244777.04	40°00'8.0229"N	104°39'30.8155"W	0.00	
2120.50†	25.604	252.225	2015.44	0.10	-170.35	-531.38	3235680.22	1244763.45	40°00'7.8925"N	104°39'31.3443"W	0.00	
2220.50†	25.604	252.225	2105.62	0.11	-183.54	-572.53	3235639.19	1244749.87	40°00'7.7621"N	104°39'31.8730"W	0.00	
2320.50†	25.604	252.225	2195.80	0.12	-196.73	-613.68	3235598.17	1244736.29	40°00'7.6317"N	104°39'32.4018"W	0.00	
2420.50†	25.604	252.225	2285.98	0.13	-209.93	-654.83	3235557.15	1244722.71	40°00'7.5013"N	104°39'32.9306"W	0.00	
2520.50†	25.604	252.225	2376.16	0.13	-223.12	-695.99	3235516.13	1244709.12	40°00'7.3710"N	104°39'33.4594"W	0.00	
2620.50†	25.604	252.225	2466.34	0.14	-236.31	-737.14	3235475.10	1244695.54	40°00'7.2406"N	104°39'33.9882"W	0.00	

# Planned Wellpath Report

BUFORD 33-5-3L (REV-A.0) PWP

Page 3 of 11

REFERENCE WELLPATH IDENTIFICATION			
Operator	CONFLUENCE RESOURCES	Well	BUFORD 33-5-3L
Field	WELD COUNTY (NAD83, TRUE NORTH)	API/Legal	
Facility	SEC.34-T01N-R65W	Wellbore	BUFORD 33-5-3L PWB
Slot	SLOT#02 BUFORD 33-5-3L (770'FSL & 769'FWL, SEC.34)		

WELLPATH DATA (187 stations) † = interpolated, ‡ = extrapolated station												
MD [ft]	Inclination [°]	Azimuth [°]	TVD [ft]	Vert Sect [ft]	North [ft]	East [ft]	Grid East [US ft]	Grid North [US ft]	Latitude	Longitude	DLS [°/100ft]	Comments
2720.50†	25.604	252.225	2556.52	0.15	-249.50	-778.29	3235434.08	1244681.96	40°00'7.1102"N	104°39'34.5170"W	0.00	
2820.50†	25.604	252.225	2646.70	0.16	-262.70	-819.44	3235393.06	1244668.37	40°00'6.9798"N	104°39'35.0458"W	0.00	
2920.50†	25.604	252.225	2736.88	0.16	-275.89	-860.59	3235352.03	1244654.79	40°00'6.8494"N	104°39'35.5746"W	0.00	
3020.50†	25.604	252.225	2827.06	0.17	-289.08	-901.74	3235311.01	1244641.21	40°00'6.7190"N	104°39'36.1034"W	0.00	
3120.50†	25.604	252.225	2917.25	0.18	-302.27	-942.89	3235269.99	1244627.63	40°00'6.5887"N	104°39'36.6322"W	0.00	
3220.50†	25.604	252.225	3007.43	0.19	-315.47	-984.05	3235228.97	1244614.04	40°00'6.4583"N	104°39'37.1610"W	0.00	
3320.50†	25.604	252.225	3097.61	0.20	-328.66	-1025.20	3235187.94	1244600.46	40°00'6.3279"N	104°39'37.6897"W	0.00	
3420.50†	25.604	252.225	3187.79	0.20	-341.85	-1066.35	3235146.92	1244586.88	40°00'6.1975"N	104°39'38.2185"W	0.00	
3520.50†	25.604	252.225	3277.97	0.21	-355.04	-1107.50	3235105.90	1244573.30	40°00'6.0671"N	104°39'38.7473"W	0.00	
3620.50†	25.604	252.225	3368.15	0.22	-368.24	-1148.65	3235064.88	1244559.71	40°00'5.9367"N	104°39'39.2761"W	0.00	
3720.50†	25.604	252.225	3458.33	0.23	-381.43	-1189.80	3235023.85	1244546.13	40°00'5.8063"N	104°39'39.8049"W	0.00	
3820.50†	25.604	252.225	3548.51	0.24	-394.62	-1230.95	3234982.83	1244532.55	40°00'5.6759"N	104°39'40.3337"W	0.00	
3920.50†	25.604	252.225	3638.69	0.24	-407.81	-1272.11	3234941.81	1244518.97	40°00'5.5455"N	104°39'40.8625"W	0.00	
4020.50†	25.604	252.225	3728.87	0.25	-421.00	-1313.26	3234900.78	1244505.38	40°00'5.4152"N	104°39'41.3913"W	0.00	
4120.50†	25.604	252.225	3819.05	0.26	-434.20	-1354.41	3234859.76	1244491.80	40°00'5.2848"N	104°39'41.9200"W	0.00	
4220.50†	25.604	252.225	3909.23	0.27	-447.39	-1395.56	3234818.74	1244478.22	40°00'5.1544"N	104°39'42.4488"W	0.00	
4320.50†	25.604	252.225	3999.41	0.27	-460.58	-1436.71	3234777.72	1244464.64	40°00'5.0240"N	104°39'42.9776"W	0.00	
4420.50†	25.604	252.225	4089.59	0.28	-473.77	-1477.86	3234736.69	1244451.05	40°00'4.8936"N	104°39'43.5064"W	0.00	
4520.50†	25.604	252.225	4179.77	0.29	-486.97	-1519.02	3234695.67	1244437.47	40°00'4.7632"N	104°39'44.0352"W	0.00	
4620.50†	25.604	252.225	4269.95	0.30	-500.16	-1560.17	3234654.65	1244423.89	40°00'4.6328"N	104°39'44.5639"W	0.00	
4720.50†	25.604	252.225	4360.13	0.31	-513.35	-1601.32	3234613.63	1244410.31	40°00'4.5024"N	104°39'45.0927"W	0.00	
4820.50†	25.604	252.225	4450.31	0.31	-526.54	-1642.47	3234572.60	1244396.72	40°00'4.3720"N	104°39'45.6215"W	0.00	
4920.50†	25.604	252.225	4540.49	0.32	-539.74	-1683.62	3234531.58	1244383.14	40°00'4.2416"N	104°39'46.1503"W	0.00	
5020.50†	25.604	252.225	4630.67	0.33	-552.93	-1724.77	3234490.56	1244369.56	40°00'4.1112"N	104°39'46.6791"W	0.00	
5120.50†	25.604	252.225	4720.85	0.34	-566.12	-1765.92	3234449.53	1244355.98	40°00'3.9808"N	104°39'47.2078"W	0.00	
5220.50†	25.604	252.225	4811.03	0.35	-579.31	-1807.08	3234408.51	1244342.39	40°00'3.8504"N	104°39'47.7366"W	0.00	
5320.50†	25.604	252.225	4901.22	0.35	-592.51	-1848.23	3234367.49	1244328.81	40°00'3.7200"N	104°39'48.2654"W	0.00	
5420.50†	25.604	252.225	4991.40	0.36	-605.70	-1889.38	3234326.47	1244315.23	40°00'3.5896"N	104°39'48.7942"W	0.00	
5520.50†	25.604	252.225	5081.58	0.37	-618.89	-1930.53	3234285.44	1244301.65	40°00'3.4592"N	104°39'49.3230"W	0.00	
5620.50†	25.604	252.225	5171.76	0.38	-632.08	-1971.68	3234244.42	1244288.06	40°00'3.3288"N	104°39'49.8517"W	0.00	

# Planned Wellpath Report

BUFORD 33-5-3L (REV-A.0) PWP

Page 4 of 11

REFERENCE WELLPATH IDENTIFICATION			
Operator	CONFLUENCE RESOURCES	Well	BUFORD 33-5-3L
Field	WELD COUNTY (NAD83, TRUE NORTH)	API/Legal	
Facility	SEC.34-T01N-R65W	Wellbore	BUFORD 33-5-3L PWB
Slot	SLOT#02 BUFORD 33-5-3L (770'FSL & 769'FWL, SEC.34)		

WELLPATH DATA (187 stations) † = interpolated, ‡ = extrapolated station												
MD [ft]	Inclination [°]	Azimuth [°]	TVD [ft]	Vert Sect [ft]	North [ft]	East [ft]	Grid East [US ft]	Grid North [US ft]	Latitude	Longitude	DLS [°/100ft]	Comments
5720.50†	25.604	252.225	5261.94	0.38	-645.28	-2012.83	3234203.40	1244274.48	40°00'3.1984"N	104°39'50.3805"W	0.00	
5820.50†	25.604	252.225	5352.12	0.39	-658.47	-2053.98	3234162.38	1244260.90	40°00'3.0680"N	104°39'50.9093"W	0.00	
5920.50†	25.604	252.225	5442.30	0.40	-671.66	-2095.14	3234121.35	1244247.31	40°00'2.9376"N	104°39'51.4381"W	0.00	
6020.50†	25.604	252.225	5532.48	0.41	-684.85	-2136.29	3234080.33	1244233.73	40°00'2.8072"N	104°39'51.9668"W	0.00	
6120.50†	25.604	252.225	5622.66	0.42	-698.04	-2177.44	3234039.31	1244220.15	40°00'2.6768"N	104°39'52.4956"W	0.00	
6220.50†	25.604	252.225	5712.84	0.42	-711.24	-2218.59	3233998.28	1244206.57	40°00'2.5464"N	104°39'53.0244"W	0.00	
6320.50†	25.604	252.225	5803.02	0.43	-724.43	-2259.74	3233957.26	1244192.98	40°00'2.4159"N	104°39'53.5531"W	0.00	
6420.50†	25.604	252.225	5893.20	0.44	-737.62	-2300.89	3233916.24	1244179.40	40°00'2.2855"N	104°39'54.0819"W	0.00	
6520.50†	25.604	252.225	5983.38	0.45	-750.81	-2342.04	3233875.22	1244165.82	40°00'2.1551"N	104°39'54.6107"W	0.00	
6620.50†	25.604	252.225	6073.56	0.46	-764.01	-2383.20	3233834.19	1244152.24	40°00'2.0247"N	104°39'55.1395"W	0.00	
6720.50†	25.604	252.225	6163.74	0.46	-777.20	-2424.35	3233793.17	1244138.65	40°00'1.8943"N	104°39'55.6682"W	0.00	
6820.50†	25.604	252.225	6253.92	0.47	-790.39	-2465.50	3233752.15	1244125.07	40°00'1.7639"N	104°39'56.1970"W	0.00	
6920.50†	25.604	252.225	6344.10	0.48	-803.58	-2506.65	3233711.13	1244111.49	40°00'1.6335"N	104°39'56.7258"W	0.00	
7020.50†	25.604	252.225	6434.28	0.49	-816.78	-2547.80	3233670.10	1244097.91	40°00'1.5031"N	104°39'57.2545"W	0.00	
7120.50†	25.604	252.225	6524.46	0.50	-829.97	-2588.95	3233629.08	1244084.32	40°00'1.3727"N	104°39'57.7833"W	0.00	
7220.50†	25.604	252.225	6614.64	0.50	-843.16	-2630.11	3233588.06	1244070.74	40°00'1.2422"N	104°39'58.3121"W	0.00	
7320.50†	25.604	252.225	6704.82	0.51	-856.35	-2671.26	3233547.03	1244057.16	40°00'1.1118"N	104°39'58.8408"W	0.00	
7420.50†	25.604	252.225	6795.01	0.52	-869.55	-2712.41	3233506.01	1244043.58	40°00'0.9814"N	104°39'59.3696"W	0.00	
7422.70	25.604	252.225	6796.99	0.52	-869.84	-2713.31	3233505.11	1244043.28	40°00'0.9785"N	104°39'59.3812"W	0.00	End of Tangent
7520.50†	24.639	275.281	6885.75	8.53	-874.42	-2753.83	3233464.64	1244038.31	40°00'0.9332"N	104°39'59.9019"W	10.00	
7620.50†	27.259	297.475	6975.87	33.03	-861.91	-2795.01	3233423.34	1244050.43	40°00'1.0568"N	104°40'0.4311"W	10.00	
7720.50†	32.655	314.445	7062.64	73.27	-832.37	-2834.69	3233383.38	1244079.58	40°00'1.3486"N	104°40'0.9410"W	10.00	
7820.50†	39.706	326.523	7143.41	128.03	-786.72	-2871.67	3233345.98	1244124.88	40°00'1.7997"N	104°40'1.4161"W	10.00	
7920.50†	47.673	335.307	7215.73	195.65	-726.34	-2904.81	3233312.26	1244184.94	40°00'2.3964"N	104°40'1.8422"W	10.00	
8020.50†	56.156	342.053	7277.40	274.07	-653.06	-2933.12	3233283.26	1244257.94	40°00'3.1205"N	104°40'2.2061"W	10.00	
8120.50†	64.939	347.554	7326.55	360.92	-569.11	-2955.74	3233259.84	1244341.67	40°00'3.9501"N	104°40'2.4968"W	10.00	
8220.50†	73.898	352.308	7361.68	453.55	-477.04	-2971.97	3233242.74	1244433.58	40°00'4.8599"N	104°40'2.7055"W	10.00	
8320.50†	82.952	356.646	7381.74	549.14	-379.65	-2981.33	3233232.46	1244530.87	40°00'5.8224"N	104°40'2.8259"W	10.00	
8398.22	90.018	359.891	7386.50†	623.62	-302.18	-2983.66	3233229.39	1244608.32	40°00'6.5880"N	104°40'2.8560"W	10.00	End of 3D Arc
8420.50†	90.018	359.891	7386.49	644.86	-279.89	-2983.71	3233229.13	1244630.60	40°00'6.8082"N	104°40'2.8566"W	0.00	

# Planned Wellpath Report

BUFORD 33-5-3L (REV-A.0) PWP

Page 5 of 11

REFERENCE WELLPATH IDENTIFICATION			
Operator	CONFLUENCE RESOURCES	Well	BUFORD 33-5-3L
Field	WELD COUNTY (NAD83, TRUE NORTH)	API/Legal	
Facility	SEC.34-T01N-R65W	Wellbore	BUFORD 33-5-3L PWB
Slot	SLOT#02 BUFORD 33-5-3L (770'FSL & 769'FWL, SEC.34)		

WELLPATH DATA (187 stations) † = interpolated, ‡ = extrapolated station												
MD [ft]	Inclination [°]	Azimuth [°]	TVD [ft]	Vert Sect [ft]	North [ft]	East [ft]	Grid East [US ft]	Grid North [US ft]	Latitude	Longitude	DLS [°/100ft]	Comments
8520.50†	90.018	359.891	7386.46	740.14	-179.90	-2983.90	3233227.99	1244730.59	40°00'7.7964"N	104°40'2.8592"W	0.00	
8620.50†	90.018	359.891	7386.43	835.41	-79.90	-2984.09	3233226.85	1244830.58	40°00'8.7847"N	104°40'2.8618"W	0.00	
8720.50†	90.018	359.891	7386.40	930.69	20.10	-2984.28	3233225.71	1244930.57	40°00'9.7729"N	104°40'2.8644"W	0.00	
8820.50†	90.018	359.891	7386.37	1025.97	120.10	-2984.47	3233224.56	1245030.56	40°00'10.7611"N	104°40'2.8670"W	0.00	
8920.50†	90.018	359.891	7386.34	1121.25	220.10	-2984.66	3233223.42	1245130.55	40°00'11.7494"N	104°40'2.8696"W	0.00	
9020.50†	90.018	359.891	7386.31	1216.53	320.10	-2984.85	3233222.28	1245230.54	40°00'12.7376"N	104°40'2.8722"W	0.00	
9120.50†	90.018	359.891	7386.28	1311.81	420.10	-2985.04	3233221.14	1245330.53	40°00'13.7258"N	104°40'2.8748"W	0.00	
9220.50†	90.018	359.891	7386.24	1407.09	520.10	-2985.23	3233220.00	1245430.52	40°00'14.7141"N	104°40'2.8774"W	0.00	
9320.50†	90.018	359.891	7386.21	1502.37	620.10	-2985.42	3233218.86	1245530.51	40°00'15.7023"N	104°40'2.8800"W	0.00	
9420.50†	90.018	359.891	7386.18	1597.65	720.10	-2985.61	3233217.71	1245630.50	40°00'16.6905"N	104°40'2.8827"W	0.00	
9520.50†	90.018	359.891	7386.15	1692.92	820.10	-2985.81	3233216.57	1245730.49	40°00'17.6787"N	104°40'2.8853"W	0.00	
9620.50†	90.018	359.891	7386.12	1788.20	920.10	-2986.00	3233215.43	1245830.48	40°00'18.6670"N	104°40'2.8879"W	0.00	
9720.50†	90.018	359.891	7386.09	1883.48	1020.10	-2986.19	3233214.29	1245930.47	40°00'19.6552"N	104°40'2.8905"W	0.00	
9820.50†	90.018	359.891	7386.06	1978.76	1120.10	-2986.38	3233213.15	1246030.46	40°00'20.6434"N	104°40'2.8931"W	0.00	
9920.50†	90.018	359.891	7386.03	2074.04	1220.10	-2986.57	3233212.00	1246130.45	40°00'21.6317"N	104°40'2.8957"W	0.00	
10020.50†	90.018	359.891	7386.00	2169.32	1320.10	-2986.76	3233210.86	1246230.44	40°00'22.6199"N	104°40'2.8983"W	0.00	
10120.50†	90.018	359.891	7385.97	2264.60	1420.10	-2986.95	3233209.72	1246330.43	40°00'23.6081"N	104°40'2.9009"W	0.00	
10220.50†	90.018	359.891	7385.93	2359.88	1520.10	-2987.14	3233208.58	1246430.42	40°00'24.5964"N	104°40'2.9035"W	0.00	
10320.50†	90.018	359.891	7385.90	2455.16	1620.10	-2987.33	3233207.44	1246530.41	40°00'25.5846"N	104°40'2.9061"W	0.00	
10420.50†	90.018	359.891	7385.87	2550.43	1720.10	-2987.52	3233206.30	1246630.40	40°00'26.5728"N	104°40'2.9087"W	0.00	
10520.50†	90.018	359.891	7385.84	2645.71	1820.10	-2987.71	3233205.15	1246730.39	40°00'27.5610"N	104°40'2.9113"W	0.00	
10620.50†	90.018	359.891	7385.81	2740.99	1920.10	-2987.90	3233204.01	1246830.38	40°00'28.5493"N	104°40'2.9139"W	0.00	
10720.50†	90.018	359.891	7385.78	2836.27	2020.10	-2988.10	3233202.87	1246930.37	40°00'29.5375"N	104°40'2.9166"W	0.00	
10820.50†	90.018	359.891	7385.75	2931.55	2120.10	-2988.29	3233201.73	1247030.36	40°00'30.5257"N	104°40'2.9192"W	0.00	
10920.50†	90.018	359.891	7385.72	3026.83	2220.10	-2988.48	3233200.59	1247130.35	40°00'31.5140"N	104°40'2.9218"W	0.00	
11020.50†	90.018	359.891	7385.69	3122.11	2320.10	-2988.67	3233199.45	1247230.34	40°00'32.5022"N	104°40'2.9244"W	0.00	
11120.50†	90.018	359.891	7385.65	3217.39	2420.10	-2988.86	3233198.30	1247330.33	40°00'33.4904"N	104°40'2.9270"W	0.00	
11220.50†	90.018	359.891	7385.62	3312.67	2520.10	-2989.05	3233197.16	1247430.32	40°00'34.4786"N	104°40'2.9296"W	0.00	
11320.50†	90.018	359.891	7385.59	3407.95	2620.10	-2989.24	3233196.02	1247530.31	40°00'35.4669"N	104°40'2.9322"W	0.00	
11420.50†	90.018	359.891	7385.56	3503.22	2720.10	-2989.43	3233194.88	1247630.30	40°00'36.4551"N	104°40'2.9348"W	0.00	

# Planned Wellpath Report

BUFORD 33-5-3L (REV-A.0) PWP

Page 6 of 11

REFERENCE WELLPATH IDENTIFICATION			
Operator	CONFLUENCE RESOURCES	Well	BUFORD 33-5-3L
Field	WELD COUNTY (NAD83, TRUE NORTH)	API/Legal	
Facility	SEC.34-T01N-R65W	Wellbore	BUFORD 33-5-3L PWB
Slot	SLOT#02 BUFORD 33-5-3L (770'FSL & 769'FWL, SEC.34)		

WELLPATH DATA (187 stations) † = interpolated, ‡ = extrapolated station												
MD [ft]	Inclination [°]	Azimuth [°]	TVD [ft]	Vert Sect [ft]	North [ft]	East [ft]	Grid East [US ft]	Grid North [US ft]	Latitude	Longitude	DLS [°/100ft]	Comments
11520.50†	90.018	359.891	7385.53	3598.50	2820.10	-2989.62	3233193.74	1247730.29	40°00'37.4433"N	104°40'2.9374"W	0.00	
11620.50†	90.018	359.891	7385.50	3693.78	2920.10	-2989.81	3233192.60	1247830.28	40°00'38.4316"N	104°40'2.9400"W	0.00	
11720.50†	90.018	359.891	7385.47	3789.06	3020.10	-2990.00	3233191.45	1247930.27	40°00'39.4198"N	104°40'2.9426"W	0.00	
11820.50†	90.018	359.891	7385.44	3884.34	3120.10	-2990.20	3233190.31	1248030.26	40°00'40.4080"N	104°40'2.9452"W	0.00	
11920.50†	90.018	359.891	7385.41	3979.62	3220.10	-2990.39	3233189.17	1248130.25	40°00'41.3962"N	104°40'2.9479"W	0.00	
12020.50†	90.018	359.891	7385.38	4074.90	3320.10	-2990.58	3233188.03	1248230.24	40°00'42.3845"N	104°40'2.9505"W	0.00	
12120.50†	90.018	359.891	7385.34	4170.18	3420.10	-2990.77	3233186.89	1248330.23	40°00'43.3727"N	104°40'2.9531"W	0.00	
12220.50†	90.018	359.891	7385.31	4265.46	3520.10	-2990.96	3233185.75	1248430.22	40°00'44.3609"N	104°40'2.9557"W	0.00	
12320.50†	90.018	359.891	7385.28	4360.73	3620.10	-2991.15	3233184.60	1248530.21	40°00'45.3492"N	104°40'2.9583"W	0.00	
12420.50†	90.018	359.891	7385.25	4456.01	3720.10	-2991.34	3233183.46	1248630.20	40°00'46.3374"N	104°40'2.9609"W	0.00	
12520.50†	90.018	359.891	7385.22	4551.29	3820.10	-2991.53	3233182.32	1248730.19	40°00'47.3256"N	104°40'2.9635"W	0.00	
12620.50†	90.018	359.891	7385.19	4646.57	3920.10	-2991.72	3233181.18	1248830.17	40°00'48.3138"N	104°40'2.9661"W	0.00	
12720.50†	90.018	359.891	7385.16	4741.85	4020.10	-2991.91	3233180.04	1248930.16	40°00'49.3021"N	104°40'2.9687"W	0.00	
12820.50†	90.018	359.891	7385.13	4837.13	4120.10	-2992.10	3233178.90	1249030.15	40°00'50.2903"N	104°40'2.9713"W	0.00	
12920.50†	90.018	359.891	7385.10	4932.41	4220.10	-2992.30	3233177.75	1249130.14	40°00'51.2785"N	104°40'2.9739"W	0.00	
13020.50†	90.018	359.891	7385.06	5027.69	4320.10	-2992.49	3233176.61	1249230.13	40°00'52.2668"N	104°40'2.9765"W	0.00	
13120.50†	90.018	359.891	7385.03	5122.97	4420.10	-2992.68	3233175.47	1249330.12	40°00'53.2550"N	104°40'2.9792"W	0.00	
13220.50†	90.018	359.891	7385.00	5218.24	4520.10	-2992.87	3233174.33	1249430.11	40°00'54.2432"N	104°40'2.9818"W	0.00	
13320.50†	90.018	359.891	7384.97	5313.52	4620.10	-2993.06	3233173.19	1249530.10	40°00'55.2314"N	104°40'2.9844"W	0.00	
13420.50†	90.018	359.891	7384.94	5408.80	4720.10	-2993.25	3233172.04	1249630.09	40°00'56.2197"N	104°40'2.9870"W	0.00	
13520.50†	90.018	359.891	7384.91	5504.08	4820.10	-2993.44	3233170.90	1249730.08	40°00'57.2079"N	104°40'2.9896"W	0.00	
13620.50†	90.018	359.891	7384.88	5599.36	4920.10	-2993.63	3233169.76	1249830.07	40°00'58.1961"N	104°40'2.9922"W	0.00	
13720.50†	90.018	359.891	7384.85	5694.64	5020.10	-2993.82	3233168.62	1249930.06	40°00'59.1844"N	104°40'2.9948"W	0.00	
13820.50†	90.018	359.891	7384.82	5789.92	5120.10	-2994.01	3233167.48	1250030.05	40°01'0.1726"N	104°40'2.9974"W	0.00	
13920.50†	90.018	359.891	7384.79	5885.20	5220.09	-2994.20	3233166.34	1250130.04	40°01'1.1608"N	104°40'3.0000"W	0.00	
14020.50†	90.018	359.891	7384.75	5980.48	5320.09	-2994.40	3233165.19	1250230.03	40°01'2.1490"N	104°40'3.0026"W	0.00	
14120.50†	90.018	359.891	7384.72	6075.76	5420.09	-2994.59	3233164.05	1250330.02	40°01'3.1373"N	104°40'3.0052"W	0.00	
14220.50†	90.018	359.891	7384.69	6171.03	5520.09	-2994.78	3233162.91	1250430.01	40°01'4.1255"N	104°40'3.0078"W	0.00	
14320.50†	90.018	359.891	7384.66	6266.31	5620.09	-2994.97	3233161.77	1250530.00	40°01'5.1137"N	104°40'3.0105"W	0.00	
14420.50†	90.018	359.891	7384.63	6361.59	5720.09	-2995.16	3233160.63	1250629.99	40°01'6.1020"N	104°40'3.0131"W	0.00	

# Planned Wellpath Report

BUFORD 33-5-3L (REV-A.0) PWP

Page 7 of 11

REFERENCE WELLPATH IDENTIFICATION			
Operator	CONFLUENCE RESOURCES	Well	BUFORD 33-5-3L
Field	WELD COUNTY (NAD83, TRUE NORTH)	API/Legal	
Facility	SEC.34-T01N-R65W	Wellbore	BUFORD 33-5-3L PWB
Slot	SLOT#02 BUFORD 33-5-3L (770'FSL & 769'FWL, SEC.34)		

WELLPATH DATA (187 stations) † = interpolated, ‡ = extrapolated station												
MD [ft]	Inclination [°]	Azimuth [°]	TVD [ft]	Vert Sect [ft]	North [ft]	East [ft]	Grid East [US ft]	Grid North [US ft]	Latitude	Longitude	DLS [°/100ft]	Comments
14520.50†	90.018	359.891	7384.60	6456.87	5820.09	-2995.35	3233159.49	1250729.98	40°01'7.0902"N	104°40'3.0157"W	0.00	
14620.50†	90.018	359.891	7384.57	6552.15	5920.09	-2995.54	3233158.34	1250829.97	40°01'8.0784"N	104°40'3.0183"W	0.00	
14720.50†	90.018	359.891	7384.54	6647.43	6020.09	-2995.73	3233157.20	1250929.96	40°01'9.0666"N	104°40'3.0209"W	0.00	
14820.50†	90.018	359.891	7384.51	6742.71	6120.09	-2995.92	3233156.06	1251029.95	40°01'10.0549"N	104°40'3.0235"W	0.00	
14920.50†	90.018	359.891	7384.47	6837.99	6220.09	-2996.11	3233154.92	1251129.94	40°01'11.0431"N	104°40'3.0261"W	0.00	
15020.50†	90.018	359.891	7384.44	6933.27	6320.09	-2996.30	3233153.78	1251229.93	40°01'12.0313"N	104°40'3.0287"W	0.00	
15120.50†	90.018	359.891	7384.41	7028.54	6420.09	-2996.50	3233152.64	1251329.92	40°01'13.0196"N	104°40'3.0313"W	0.00	
15220.50†	90.018	359.891	7384.38	7123.82	6520.09	-2996.69	3233151.49	1251429.91	40°01'14.0078"N	104°40'3.0339"W	0.00	
15320.50†	90.018	359.891	7384.35	7219.10	6620.09	-2996.88	3233150.35	1251529.90	40°01'14.9960"N	104°40'3.0365"W	0.00	
15420.50†	90.018	359.891	7384.32	7314.38	6720.09	-2997.07	3233149.21	1251629.89	40°01'15.9842"N	104°40'3.0392"W	0.00	
15520.50†	90.018	359.891	7384.29	7409.66	6820.09	-2997.26	3233148.07	1251729.88	40°01'16.9725"N	104°40'3.0418"W	0.00	
15620.50†	90.018	359.891	7384.26	7504.94	6920.09	-2997.45	3233146.93	1251829.87	40°01'17.9607"N	104°40'3.0444"W	0.00	
15720.50†	90.018	359.891	7384.23	7600.22	7020.09	-2997.64	3233145.79	1251929.86	40°01'18.9489"N	104°40'3.0470"W	0.00	
15820.50†	90.018	359.891	7384.20	7695.50	7120.09	-2997.83	3233144.64	1252029.85	40°01'19.9371"N	104°40'3.0496"W	0.00	
15920.50†	90.018	359.891	7384.16	7790.78	7220.09	-2998.02	3233143.50	1252129.84	40°01'20.9254"N	104°40'3.0522"W	0.00	
16020.50†	90.018	359.891	7384.13	7886.05	7320.09	-2998.21	3233142.36	1252229.83	40°01'21.9136"N	104°40'3.0548"W	0.00	
16120.50†	90.018	359.891	7384.10	7981.33	7420.09	-2998.40	3233141.22	1252329.82	40°01'22.9018"N	104°40'3.0574"W	0.00	
16220.50†	90.018	359.891	7384.07	8076.61	7520.09	-2998.60	3233140.08	1252429.81	40°01'23.8901"N	104°40'3.0600"W	0.00	
16320.50†	90.018	359.891	7384.04	8171.89	7620.09	-2998.79	3233138.94	1252529.80	40°01'24.8783"N	104°40'3.0626"W	0.00	
16420.50†	90.018	359.891	7384.01	8267.17	7720.09	-2998.98	3233137.79	1252629.79	40°01'25.8665"N	104°40'3.0652"W	0.00	
16520.50†	90.018	359.891	7383.98	8362.45	7820.09	-2999.17	3233136.65	1252729.78	40°01'26.8547"N	104°40'3.0679"W	0.00	
16620.50†	90.018	359.891	7383.95	8457.73	7920.09	-2999.36	3233135.51	1252829.77	40°01'27.8430"N	104°40'3.0705"W	0.00	
16720.50†	90.018	359.891	7383.92	8553.01	8020.09	-2999.55	3233134.37	1252929.76	40°01'28.8312"N	104°40'3.0731"W	0.00	
16820.50†	90.018	359.891	7383.88	8648.29	8120.09	-2999.74	3233133.23	1253029.75	40°01'29.8194"N	104°40'3.0757"W	0.00	
16920.50†	90.018	359.891	7383.85	8743.57	8220.09	-2999.93	3233132.08	1253129.74	40°01'30.8076"N	104°40'3.0783"W	0.00	
17020.50†	90.018	359.891	7383.82	8838.84	8320.09	-3000.12	3233130.94	1253229.73	40°01'31.7959"N	104°40'3.0809"W	0.00	
17120.50†	90.018	359.891	7383.79	8934.12	8420.09	-3000.31	3233129.80	1253329.72	40°01'32.7841"N	104°40'3.0835"W	0.00	
17220.50†	90.018	359.891	7383.76	9029.40	8520.09	-3000.50	3233128.66	1253429.71	40°01'33.7723"N	104°40'3.0861"W	0.00	
17320.50†	90.018	359.891	7383.73	9124.68	8620.09	-3000.70	3233127.52	1253529.70	40°01'34.7606"N	104°40'3.0887"W	0.00	
17420.50†	90.018	359.891	7383.70	9219.96	8720.09	-3000.89	3233126.38	1253629.69	40°01'35.7488"N	104°40'3.0913"W	0.00	



# Planned Wellpath Report

BUFORD 33-5-3L (REV-A.0) PWP

Page 8 of 11

REFERENCE WELLPATH IDENTIFICATION			
Operator	CONFLUENCE RESOURCES	Well	BUFORD 33-5-3L
Field	WELD COUNTY (NAD83, TRUE NORTH)	API/Legal	
Facility	SEC.34-T01N-R65W	Wellbore	BUFORD 33-5-3L PWB
Slot	SLOT#02 BUFORD 33-5-3L (770'FSL & 769'FWL, SEC.34)		

WELLPATH DATA (187 stations) † = interpolated, ‡ = extrapolated station												
MD [ft]	Inclination [°]	Azimuth [°]	TVD [ft]	Vert Sect [ft]	North [ft]	East [ft]	Grid East [US ft]	Grid North [US ft]	Latitude	Longitude	DLS [°/100ft]	Comments
17520.50†	90.018	359.891	7383.67	9315.24	8820.09	-3001.08	3233125.23	1253729.68	40°01'36.7370"N	104°40'3.0939"W	0.00	
17620.50†	90.018	359.891	7383.64	9410.52	8920.09	-3001.27	3233124.09	1253829.67	40°01'37.7252"N	104°40'3.0966"W	0.00	
17720.50†	90.018	359.891	7383.61	9505.80	9020.09	-3001.46	3233122.95	1253929.66	40°01'38.7135"N	104°40'3.0992"W	0.00	
17820.50†	90.018	359.891	7383.57	9601.08	9120.09	-3001.65	3233121.81	1254029.65	40°01'39.7017"N	104°40'3.1018"W	0.00	
17920.50†	90.018	359.891	7383.54	9696.35	9220.09	-3001.84	3233120.67	1254129.64	40°01'40.6899"N	104°40'3.1044"W	0.00	
18020.50†	90.018	359.891	7383.51	9791.63	9320.09	-3002.03	3233119.53	1254229.63	40°01'41.6781"N	104°40'3.1070"W	0.00	
18059.14	90.018	359.891	7383.50‡	9828.45	9358.73	-3002.11	3233119.08	1254268.27	40°01'42.0600"N	104°40'3.1080"W	0.00	End of Tangent

HOLE & CASING SECTIONS - Ref Wellbore: BUFORD 33-5-3L PWB Ref Wellpath: BUFORD 33-5-3L (REV-A.0) PWP									
String/Diameter	Start MD [ft]	End MD [ft]	Interval [ft]	Start TVD [ft]	End TVD [ft]	Start N/S [ft]	Start E/W [ft]	End N/S [ft]	End E/W [ft]
13.5in Open Hole	20.50	1500.00	1479.50	20.50	1455.87	0.00	0.00	-88.49	-276.03
9.625in Casing Surface	20.50	1500.00	1479.50	20.50	1455.87	0.00	0.00	-88.49	-276.03
8.5in Open Hole	1500.00	18059.14	16559.14	1455.87	7383.50	-88.49	-276.03	9358.73	-3002.11

# Planned Wellpath Report

BUFORD 33-5-3L (REV-A.0) PWP

Page 9 of 11

REFERENCE WELLPATH IDENTIFICATION			
Operator	CONFLUENCE RESOURCES	Well	BUFORD 33-5-3L
Field	WELD COUNTY (NAD83, TRUE NORTH)	API/Legal	
Facility	SEC.34-T01N-R65W	Wellbore	BUFORD 33-5-3L PWB
Slot	SLOT#02 BUFORD 33-5-3L (770'FSL & 769'FWL, SEC.34)		

TARGETS									
Name	MD [ft]	TVD [ft]	North [ft]	East [ft]	Grid East [US ft]	Grid North [US ft]	Latitude	Longitude	Shape
SEC 28-T01N-R65W	N/A	0.00	0.00	0.00	3236209.93	1244938.84	40°00'9.5760"N	104°39'24.5160"W	polygon
	2D Polygon: dimensions not calculated								
SEC 33-T01N-R65W	N/A	0.00	0.00	0.00	3236209.93	1244938.84	40°00'9.5760"N	104°39'24.5160"W	polygon
	2D Polygon: dimensions not calculated								
SEC 34-T01N-R65W	N/A	0.00	0.00	0.00	3236209.93	1244938.84	40°00'9.5760"N	104°39'24.5160"W	polygon
	2D Polygon: dimensions not calculated								
SEC.28-T01N-R65W NE CORNER	N/A	0.00	9839.42	-778.52	3235337.92	1254770.06	40°01'46.8120"N	104°39'34.5240"W	point
SEC.28-T01N-R65W NW CORNER	N/A	0.00	9818.29	-6060.11	3230056.96	1254698.71	40°01'46.5960"N	104°40'42.4200"W	point
SEC.33-T01N-R65W NW CORNER	N/A	0.00	4517.90	-6075.41	3230092.06	1249398.61	40°00'54.2160"N	104°40'42.6000"W	point
SEC.33-T01N-R65W SW CORNER	N/A	0.00	-771.55	-6048.68	3230169.07	1244109.84	40°00'1.9440"N	104°40'42.2400"W	point
SEC.34-T01N-R65W NE CORNER	N/A	0.00	4539.43	4492.83	3240659.23	1249520.62	40°00'54.4320"N	104°38'26.7720"W	point

# Planned Wellpath Report

BUFORD 33-5-3L (REV-A.0) PWP

Page 10 of 11

REFERENCE WELLPATH IDENTIFICATION			
Operator	CONFLUENCE RESOURCES	Well	BUFORD 33-5-3L
Field	WELD COUNTY (NAD83, TRUE NORTH)	API/Legal	
Facility	SEC.34-T01N-R65W	Wellbore	BUFORD 33-5-3L PWB
Slot	SLOT#02 BUFORD 33-5-3L (770'FSL & 769'FWL, SEC.34)		

TARGETS									
Name	MD [ft]	TVD [ft]	North [ft]	East [ft]	Grid East [US ft]	Grid North [US ft]	Latitude	Longitude	Shape
SEC.34-T01N-R65W NW CORNER	N/A	0.00	4549.96	-803.89	3235362.84	1249480.79	40°00'54.5400"N	104°39'34.8480"W	point
SEC.34-T01N-R65W SE CORNER	N/A	0.00	-760.95	4521.80	3240738.60	1244220.95	40°00'2.0520"N	104°38'26.4120"W	point
SEC.34-T01N-R65W SW CORNER	N/A	0.00	-768.63	-762.04	3235455.26	1244163.02	40°00'1.9800"N	104°39'34.3080"W	point
2) BUFORD 33-5-3L BHL REV-1 (470'FNL & 2219'FEL, SEC.28)	18059.14	7383.50	9358.73	-3002.11	3233119.08	1254268.27	40°01'42.0600"N	104°40'3.1080"W	point
1) BUFORD 33-5-3L LP REV-1 (470'FSL & 2219'FEL, SEC.33)	8398.22	7386.50	-302.18	-2983.66	3233229.39	1244608.32	40°00'6.5880"N	104°40'2.8560"W	point

SURVEY PROGRAM - Ref Wellbore: BUFORD 33-5-3L PWB Ref Wellpath: BUFORD 33-5-3L (REV-A.0) PWP				
Start MD [ft]	End MD [ft]	Positional Uncertainty Model	Log Name/Comment	Wellbore
20.50	1500.00	BH NaviTrak (2019) (Standard)		BUFORD 33-5-3L PWB
1500.00	18059.14	BH AutoTrak Curve/eXpress (2019) (Standard)		BUFORD 33-5-3L PWB

# Planned Wellpath Report

BUFORD 33-5-3L (REV-A.0) PWP

Page 11 of 11

REFERENCE WELLPATH IDENTIFICATION			
Operator	CONFLUENCE RESOURCES	Well	BUFORD 33-5-3L
Field	WELD COUNTY (NAD83, TRUE NORTH)	API/Legal	
Facility	SEC.34-T01N-R65W	Wellbore	BUFORD 33-5-3L PWB
Slot	SLOT#02 BUFORD 33-5-3L (770'FSL & 769'FWL, SEC.34)		

DESIGN COMMENTS				
MD [ft]	Inclination [°]	Azimuth [°]	TVD [ft]	Comment
20.50	0.000	252.225	20.50	Tie On
200.00	0.000	252.225	200.00	End of Tangent
1480.18	25.604	252.225	1438.00	End of Build
7422.70	25.604	252.225	6796.99	End of Tangent
8398.22	90.018	359.891	7386.50	End of 3D Arc
18059.14	90.018	359.891	7383.50	End of Tangent