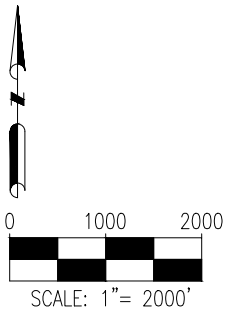
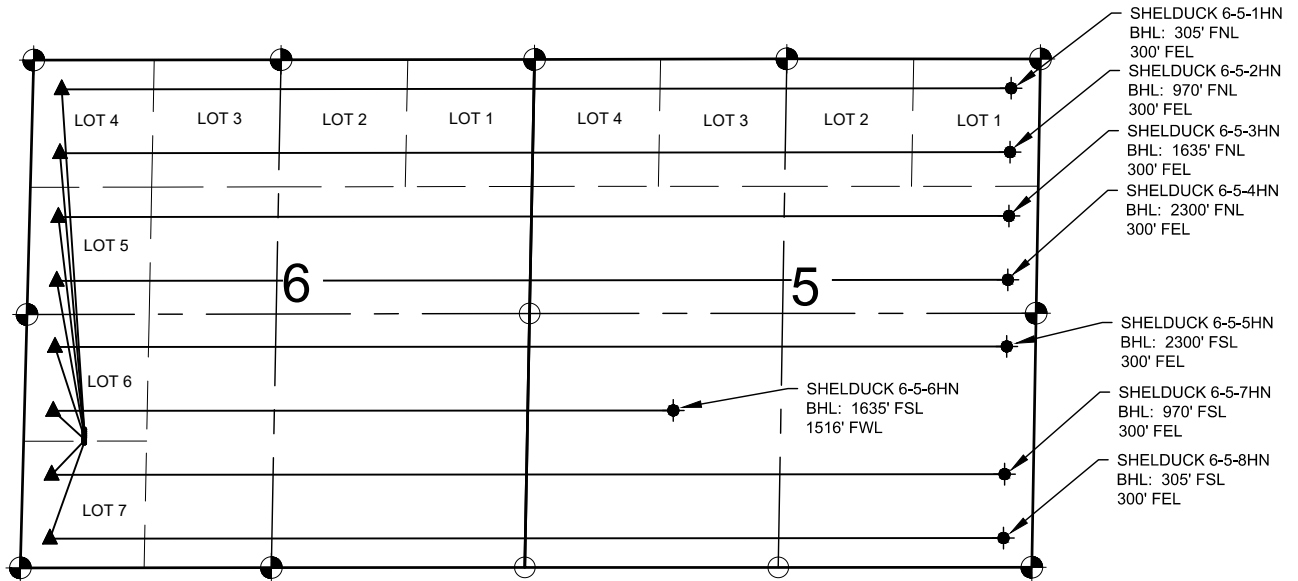


SHELDUCK SOUTH PAD MULTI-WELL PLAN



LEGEND

- | | |
|-------------------------|----------------------------|
| ● = EXISTING MONUMENT | ◆ = BOTTOM HOLE |
| ○ = CALCULATED POSITION | ▲ = LANDING POINT |
| ● = PROPOSED WELL | LP = LANDING POINT |
| ◆ = EXISTING WELL | BHL = BOTTOM HOLE LOCATION |

NOTES:

- THIS FIELD SURVEY CONFORMS TO THE MINIMUM STANDARDS SET BY THE C.O.G.C.C., RULE NO. 215
- ALL DISTANCES AND BEARINGS SHOWN HEREON ARE GROUND VALUES AS GPS MEASURED IN THE FIELD, WITH TIES TO WELLS MEASURED PERPENDICULAR TO SECTION LINES. THIS LOW DISTORTION PROJECTION (LDP) IS BASED ON THE NORTH AMERICAN DATUM OF 1983, U.S. SURVEY FOOT WITH A LATITUDE ORIGIN OF 40.655085°N, A CENTRAL MERIDIAN LONGITUDE OF 104.086861°W, AND A SCALE FACTOR ON THE CENTRAL MERIDIAN OF 1.000232 (EXACT). THE LDP BASIS OF BEARINGS IS GEODETIC NORTH.
- FIELD VERIFICATION OF MONUMENTS COMPLETED WITHIN 1 YEAR OF SIGNATURE DATE.

NOTES:

- SHELDUCK 6-5-1HN TO BE AT 1442' FSL & 628' FWL.
BOTTOM HOLE AT 305' FNL & 300' FEL, SEC. 5.
- SHELDUCK 6-5-2HN TO BE AT 1422' FSL & 629' FWL.
BOTTOM HOLE AT 970' FNL & 300' FEL, SEC. 5.
- SHELDUCK 6-5-3HN TO BE AT 1402' FSL & 629' FWL.
BOTTOM HOLE AT 1635' FNL & 300' FEL, SEC. 5.
- SHELDUCK 6-5-4HN TO BE AT 1382' FSL & 629' FWL.
BOTTOM HOLE AT 2300' FNL & 300' FEL, SEC. 5.
- SHELDUCK 6-5-5HN TO BE AT 1362' FSL & 629' FWL.
BOTTOM HOLE AT 2300' FSL & 300' FEL, SEC. 5.
- SHELDUCK 6-5-6HN TO BE AT 1342' FSL & 629' FWL.
BOTTOM HOLE AT 1635' FSL & 1516' FWL, SEC. 5.
- SHELDUCK 6-5-7HN TO BE AT 1322' FSL & 630' FWL.
BOTTOM HOLE AT 970' FSL & 300' FEL, SEC. 5.
- SHELDUCK 6-5-8HN TO BE AT 1302' FSL & 630' FWL.
BOTTOM HOLE AT 305' FSL & 300' FEL, SEC. 5.