

Company	Anadarko Petroleum Corp
Well	UPRC P 05-24D
Field	Wattenberg
County	Weld
State	Colorado

Location:	API # : 05-123-31492	Other Services
		None
SEC 5	TWP 3N	RGE 67W
Permanent Datum	Ground Level	Elevation 4875
Log Measured From	Kelly Bushing	
Drilling Measured From	Kelly Bushing	
		Elevation
		K.B. 4885
		D.F. 4884
		G.L. 4875

Date	14 Sep 2020
------	-------------

Run Number	One
Depth Driller	7986
Depth Logger	868
Bottom Logged Interval	866
Top Log Interval	Surface
Casing Size	4 1/2
Type Fluid	Water
Max. Recorded Temp.	Not Recorded
Estimated Cement Top	---
Time Well Ready	ROA
Time Logger on Bottom	13:45
Unit Number	200100
Tool Size/ID Number	2.75 Probe Radii
Location	Fort Lupton
Recorded By	Scott Erb
Witnessed By	Luis Morales

Borehole Record				Tubing Record			
Run Number	Bit	From	To	Size	Weight	From	To
Casing Record		Size		Wgt/Ft		Top	Bottom
Surface String		8 5/8		24		Surface	607
Prot. String							
Production String		4 1/2		11.6		Surface	Total Depth
Liner							

<<< Fold Here >>>

All interpretations are opinions based on inferences from electrical or other measurements and we cannot and do not guarantee the accuracy or correctness of any interpretation, and we shall not, except in the case of gross or willful negligence on our part, be liable or responsible for any loss, costs, damages, or expenses incurred or sustained by anyone resulting from any interpretation made by any of our officers, agents or employees. These interpretations are also subject to our general terms and conditions set out in our current Price Schedule.

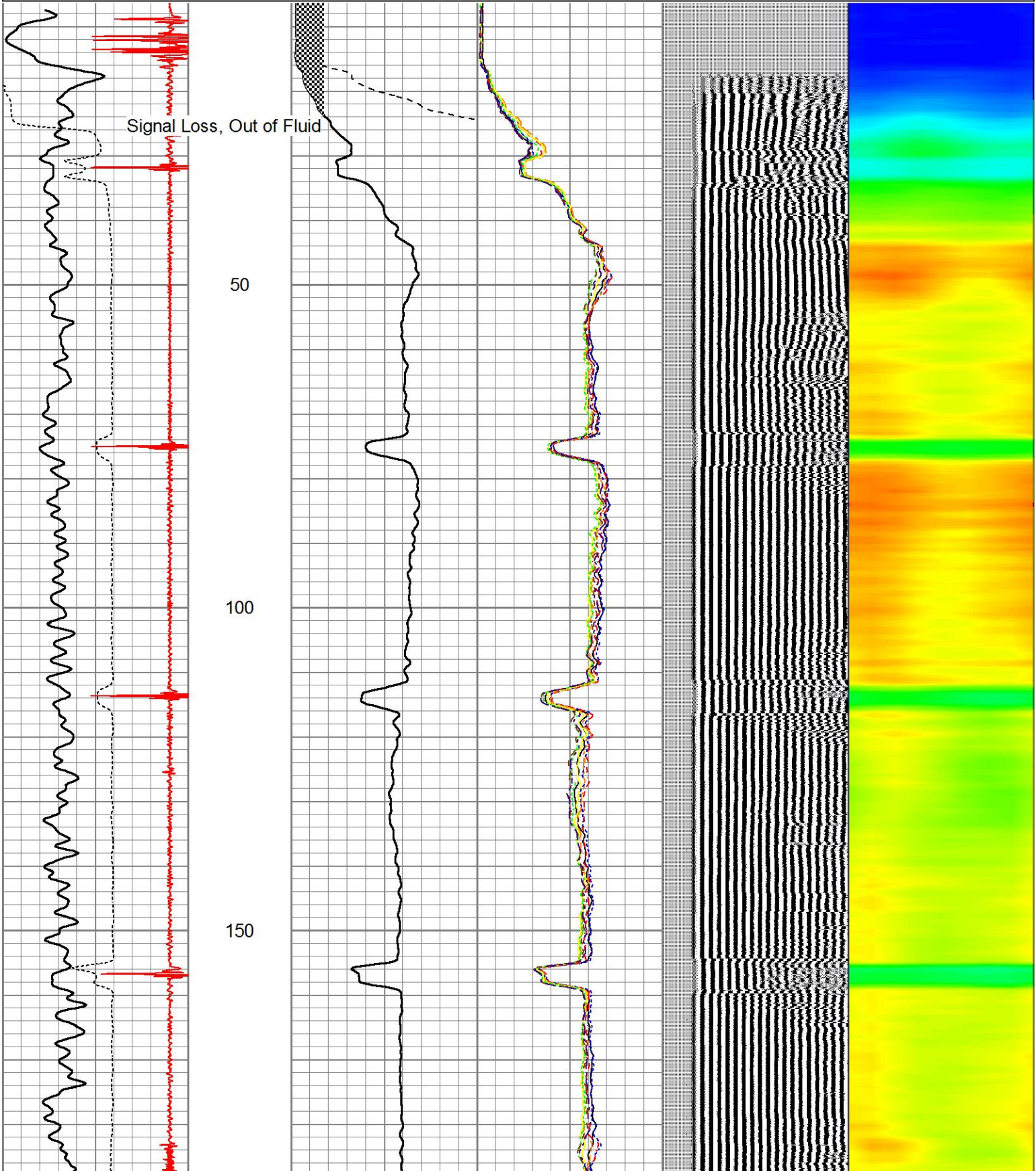
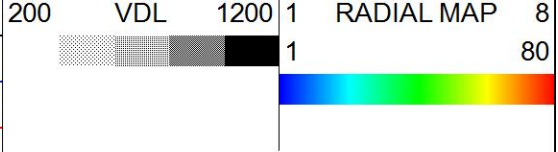
Comments

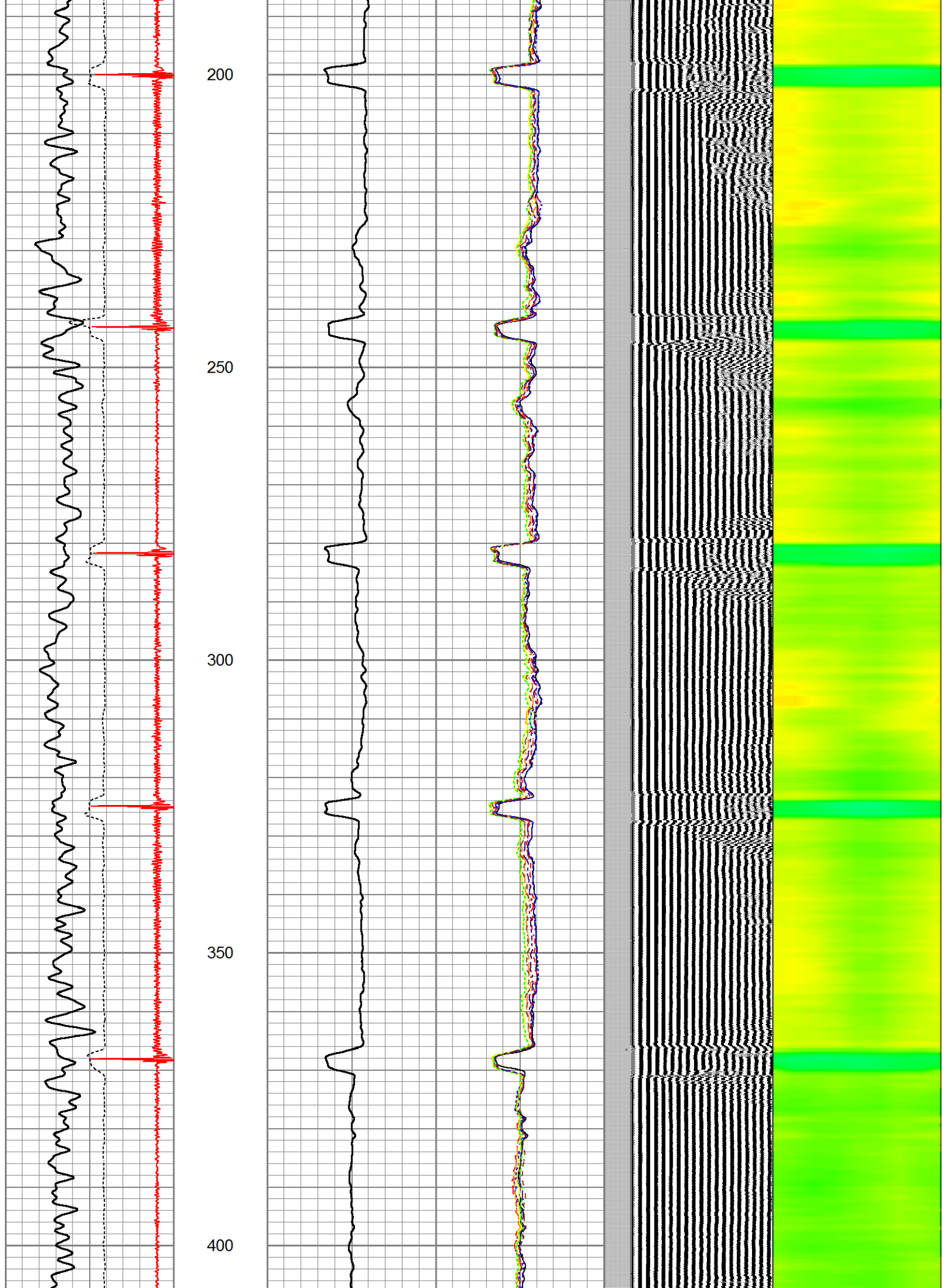
No log available for correlation

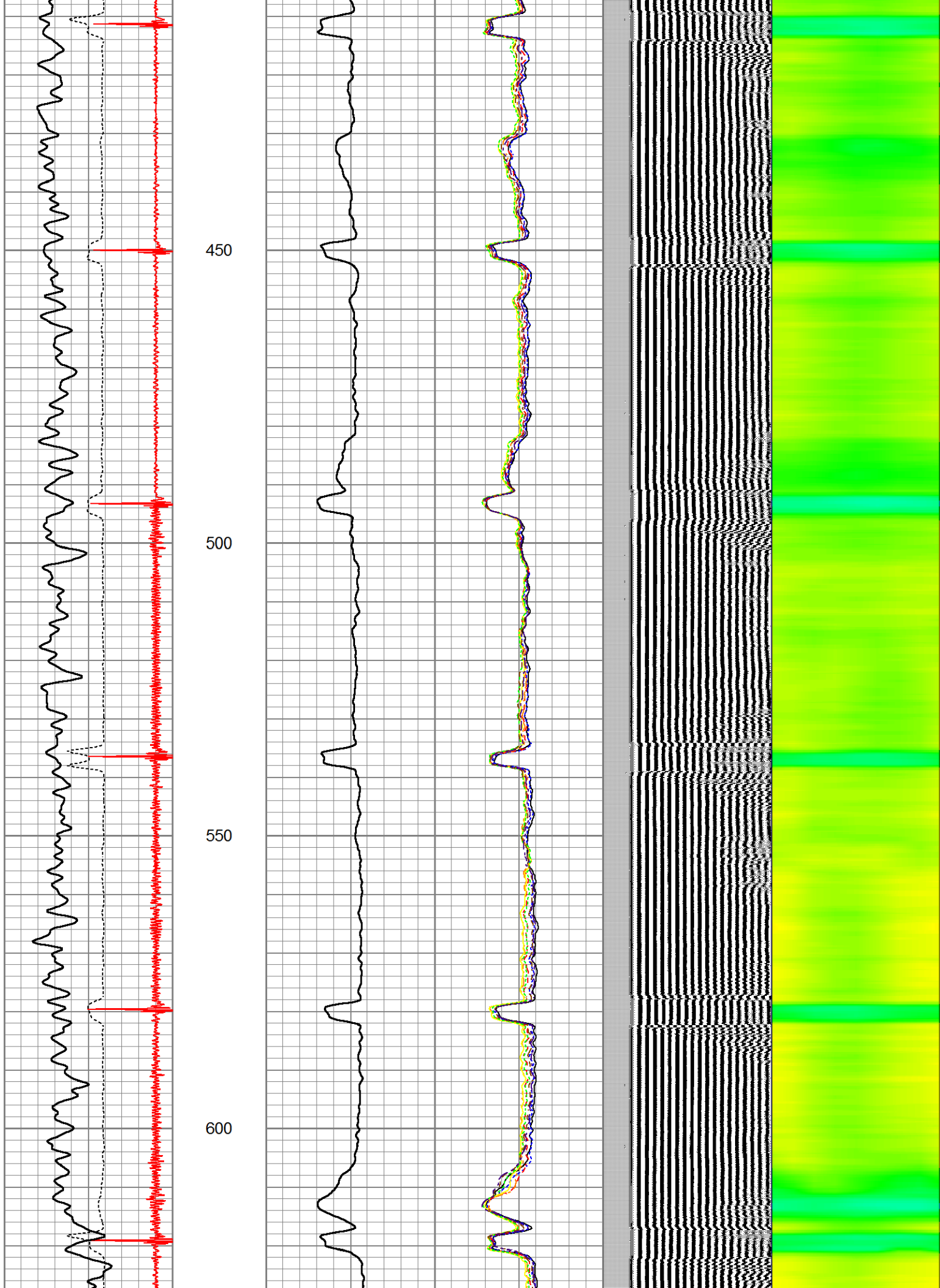
10	CCL	-1.1
0	GR (GAPI)	150
300	TT3 (usec)	200

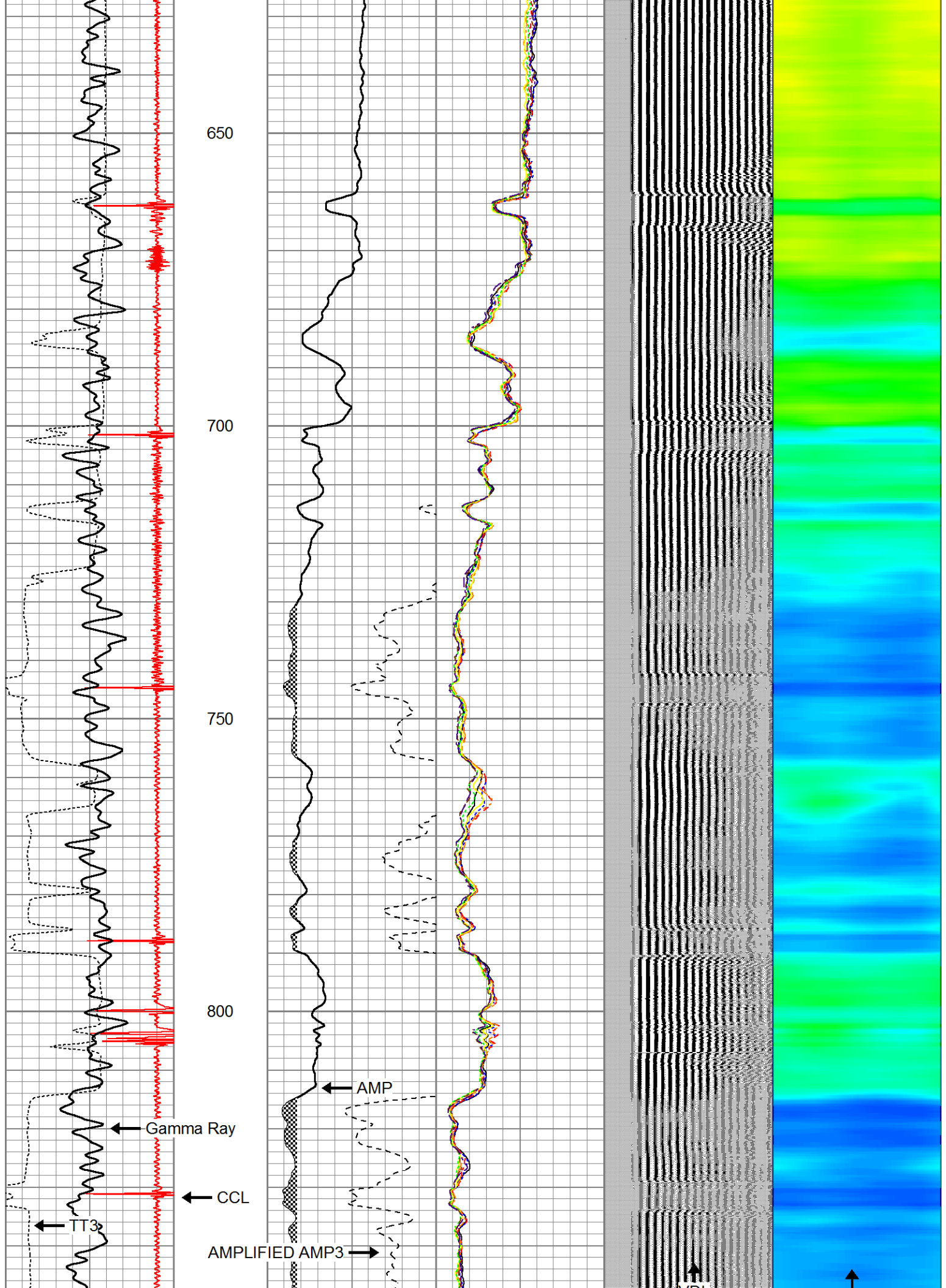
0	AMP (mV)	100
0	AMPLIFIED AMP3	20

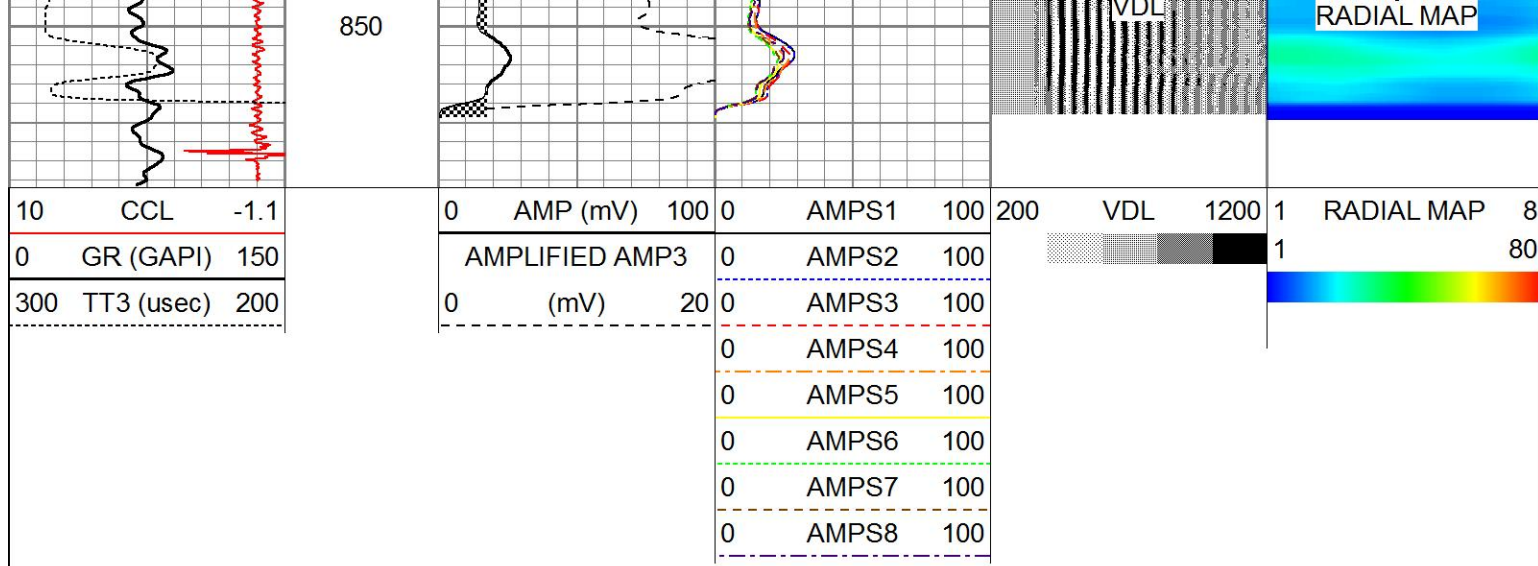
0	AMPS1	100
0	AMPS2	100
0	AMPS3	100
0	AMPS4	100
0	AMPS5	100
0	AMPS6	100
0	AMPS7	100
0	AMPS8	100











Calibration Report	
Database File	uprc p 05-24d.db
Dataset Pathname	pass3
Dataset Creation	Mon Sep 14 13:24:27 2020

Gamma Ray Calibration Report

Type / Serial:	Probe275dig / 101010
----------------	----------------------

SHOP CALIBRATION		Wed Feb 27 07:52:48 2013			
	Counts/Sec.	Gain	Offset	Jig	Units
Background	0.0				cps
Calibrator	1.0				cps
		0.6500			GAPI/cps
PRIMARY VERIFICATION					
Background	0.0				cps
Calibrator	0.0				cps
Difference				0.0	GAPI
BEFORE SURVEY VERIFICATION					
Background	0.0				cps
Calibrator	0.0				cps
Difference				0.0	GAPI
AFTER SURVEY VERIFICATION					
Background	0.0				cps
Calibrator	0.0				cps
Difference				0.0	GAPI

Segmented Cement Bond Log Calibration Report

Serial Number:	101020
Tool Model:	Probe
Calibration Casing Diameter:	4.500 in
Calibration Depth:	799.550 ft

Master Calibration, performed Tue Jul 21 11:41:40 2020:					
Raw (v)		Calibrated (mv)		Results	
Zero	Cal	Zero	Cal	Gain	Offset

3'	0.000	1.483	1.000	81.196	54.062	1.000
CAL	0.000	1.751				
5'	0.000	1.327	1.000	81.196	60.411	1.000
SUM						
S1	0.000	1.517	0.000	81.196	53.530	0.000
S2	0.000	1.442	0.000	81.196	56.293	0.000
S3	0.000	1.413	0.000	81.196	57.480	0.000
S4	0.000	1.410	0.000	81.196	57.572	0.000
S5	0.000	1.454	0.000	81.196	55.840	0.000
S6	0.000	1.507	0.000	81.196	53.865	0.000
S7	0.000	1.507	0.000	81.196	53.874	0.000
S8	0.000	1.525	0.000	81.196	53.250	0.000

Internal Reference Calibration, performed Tue Feb 12 12:45:01 2013:

	Raw (v)		Calibrated (v)		Results	
	Zero	Cal	Zero	Cal	Gain	Offset
CAL	0.000	0.000	0.000	1.751	1.000	0.000

Air Zero Calibration, performed Thu Feb 21 13:40:31 2013:

	Raw (v)		Calibrated (v)		Results
	Zero		Zero		Offset
3'	0.000		0.000		0.000
5'	0.000		0.000		0.000
SUM					
S1	0.000		0.000		0.000
S2	0.000		0.000		0.000
S3	0.000		0.000		0.000
S4	0.000		0.000		0.000
S5	0.000		0.000		0.000
S6	0.000		0.000		0.000
S7	0.000		0.000		0.000
S8	0.000		0.000		0.000