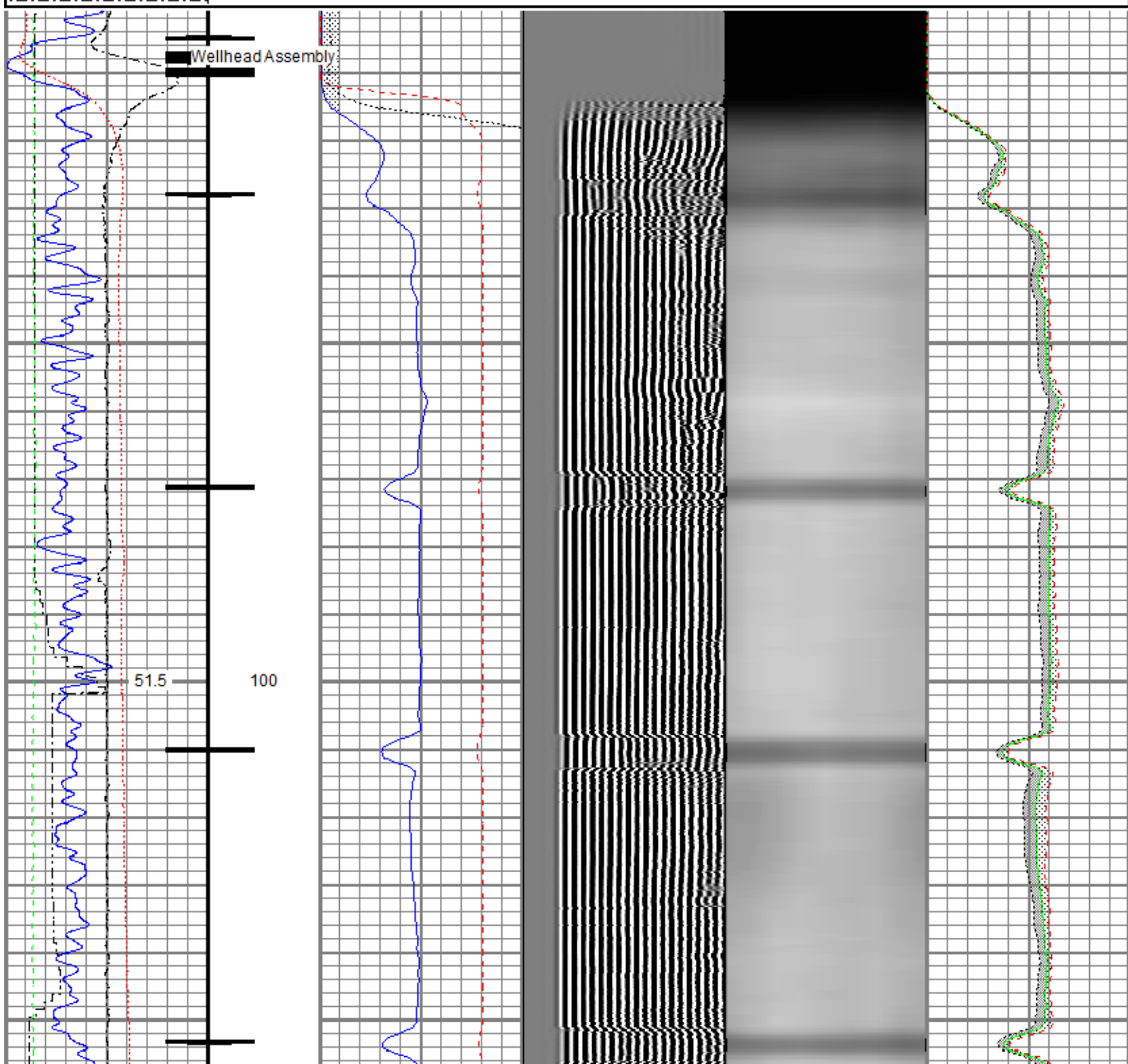


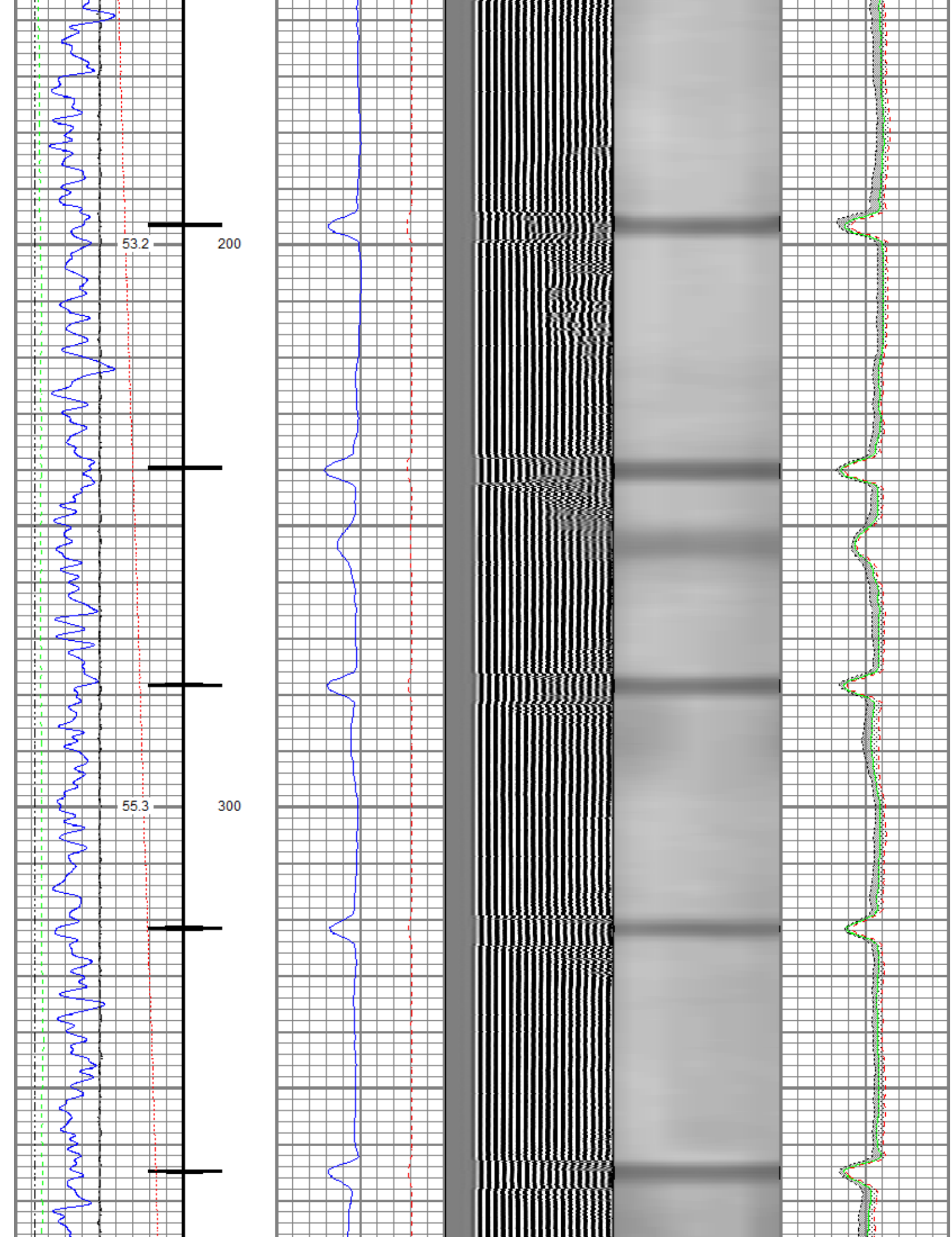


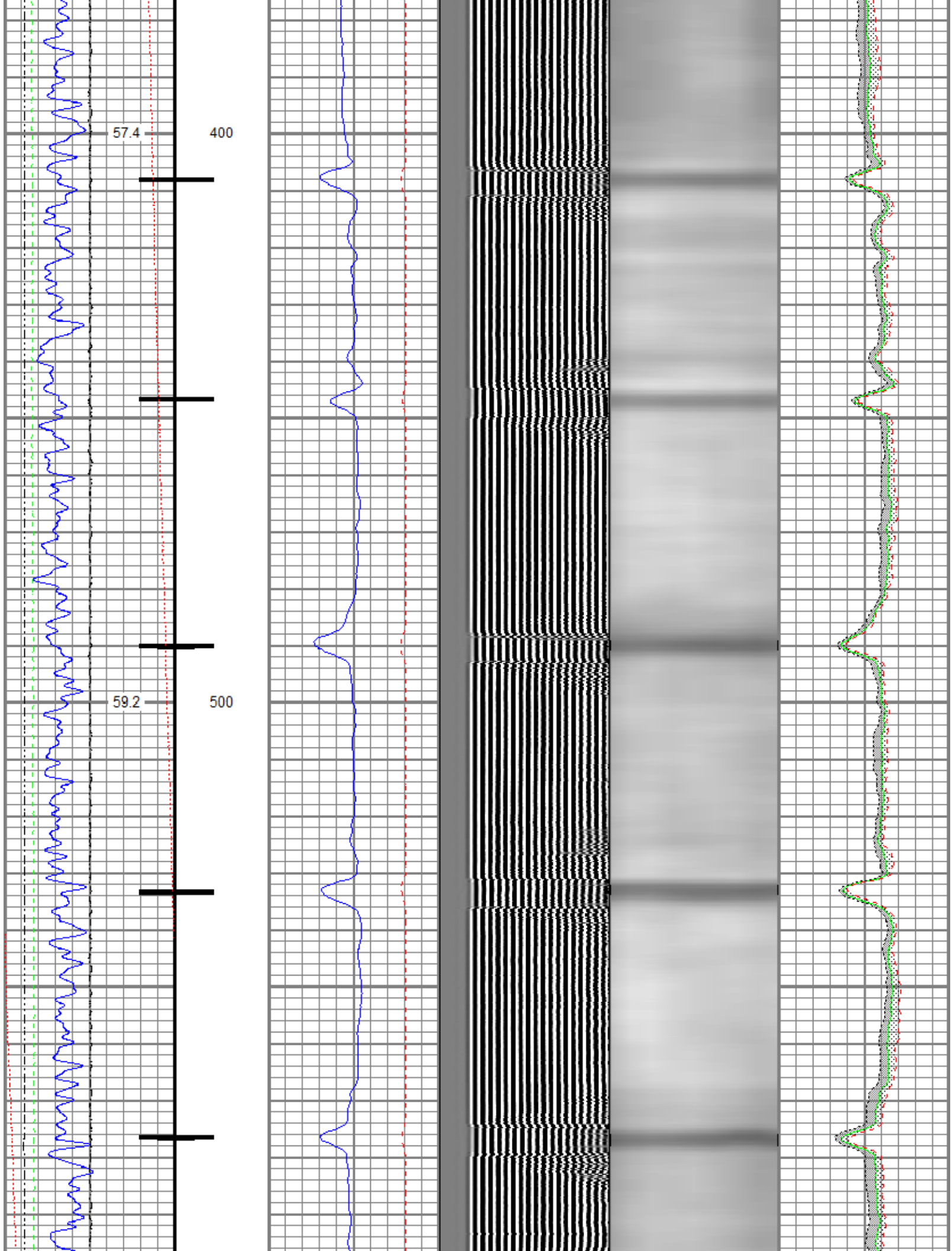
<<< Fold Here >>>
All interpretations are opinions based on inferences from electrical or other measurements and we cannot and do not guarantee the accuracy or correctness of any interpretation, and we shall not, except in the case of gross or willful negligence on our part, be liable or responsible for any loss, costs, damages, or expenses incurred or sustained by anyone resulting from any interpretation made by any of our officers, agents or employees. These interpretations are also subject to our general terms and conditions set out in our current Price Schedule.
Comments
<p>Log ran as per customer request Depth referenced to Kelly Bushing at 10 FT Tagged at 1663 FT Log ran with 0 PSI Surface Induced Pressure Logging tools were clean and free of debris upon completion of operations</p> <p>Thank you for choosing Reliance Oilfield Services, LLC!!</p>

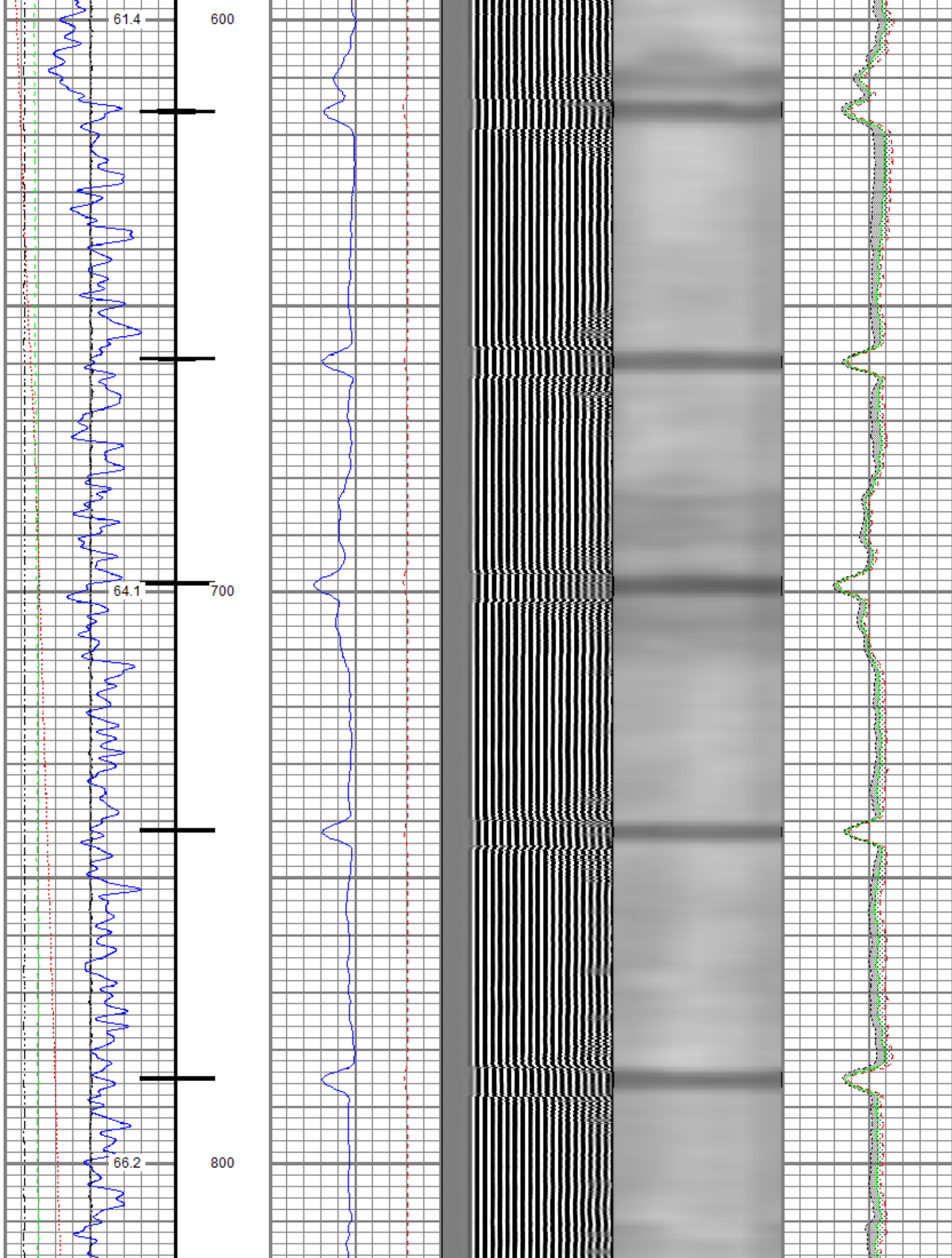
Database File oxy\0512331492_oxy_uprc p 05-24d_rbl_09-08-20\processed_0512331492_oxy_uprc p 05-24d_rbl_09-08-20.db
 Dataset Pathname Main/Pass3.1
 Presentation Format ros_radri
 Dataset Creation Tue Sep 08 08:31:05 2020
 Charted by Depth in Feet scaled 1:240

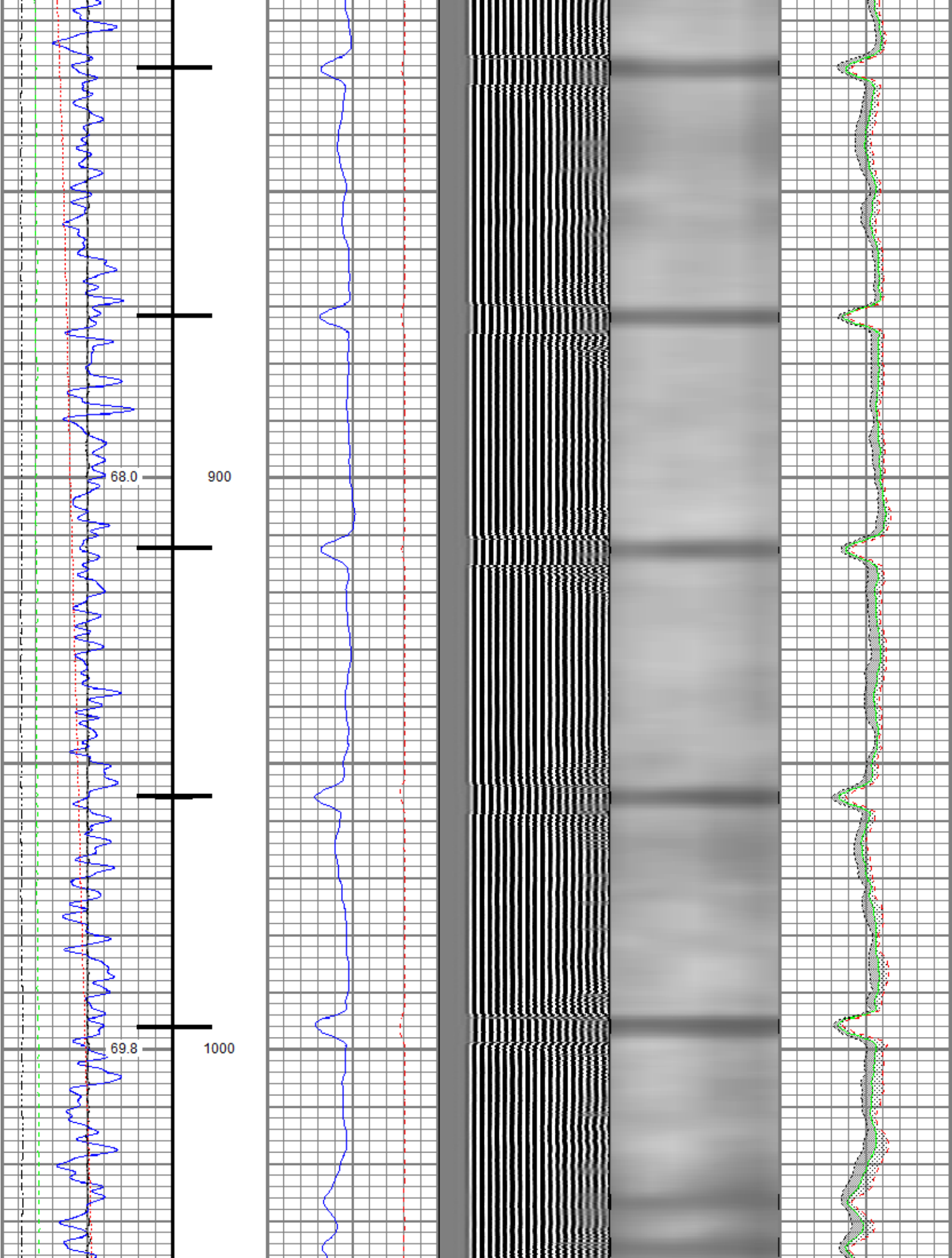
Gamma Ray	0	3' Amplitude (mV)	100	5' Variable Density Log	Sector Map	0	Average Amplitude	100
(GAPI)	120	3' Amplitude x 5	200	(usec)	1200		Minimum Amplitude	
Casing Collar Locator	0	(mV)	20			0		100
Temperature (degF)	20	3' Travel Time					Maximum Amplitude	
Line Speed	650	(usec)	150			0		100
(ft/min)	150							
Line Tension (lb)	2000							
Differential Temperature								
(degF)	2							

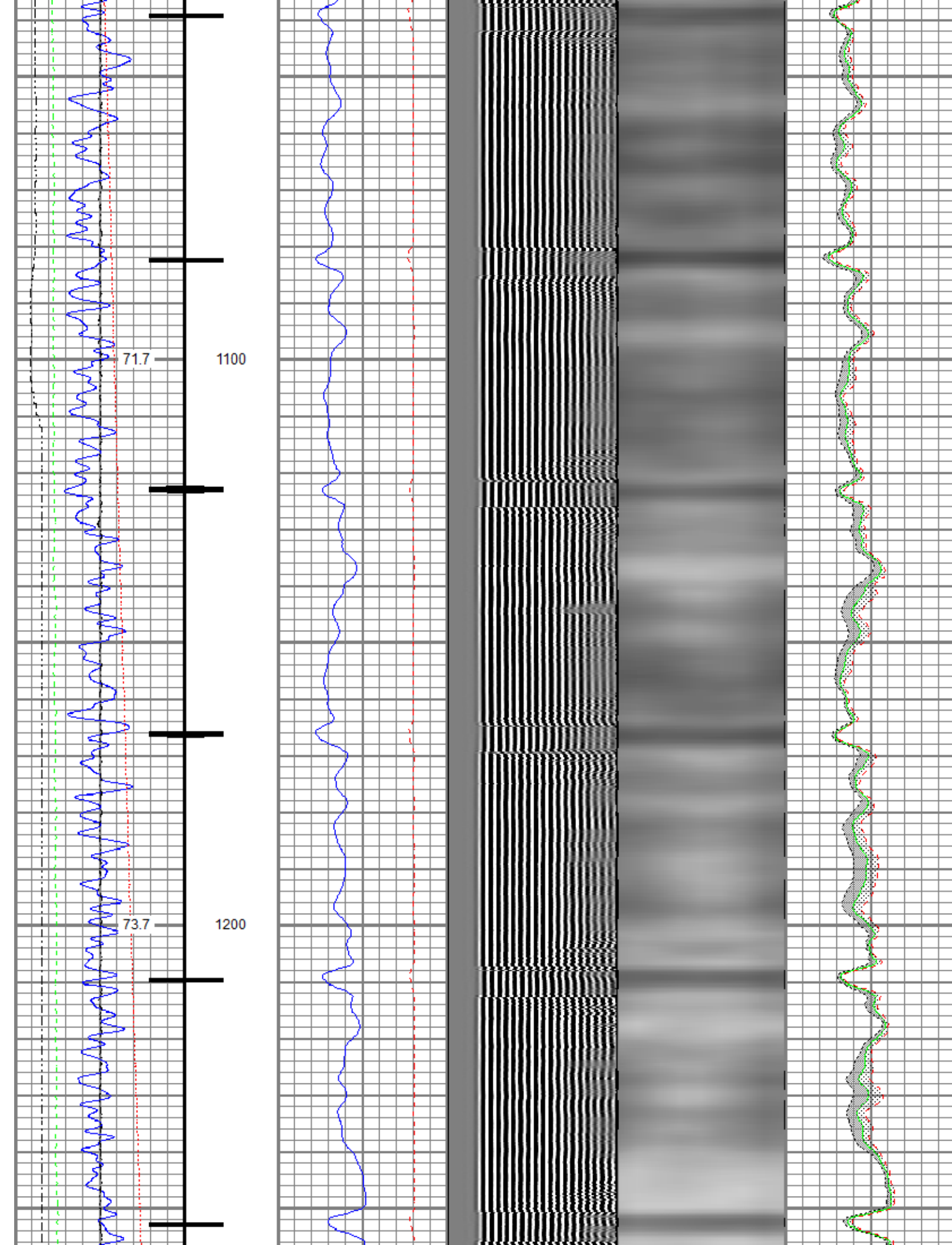


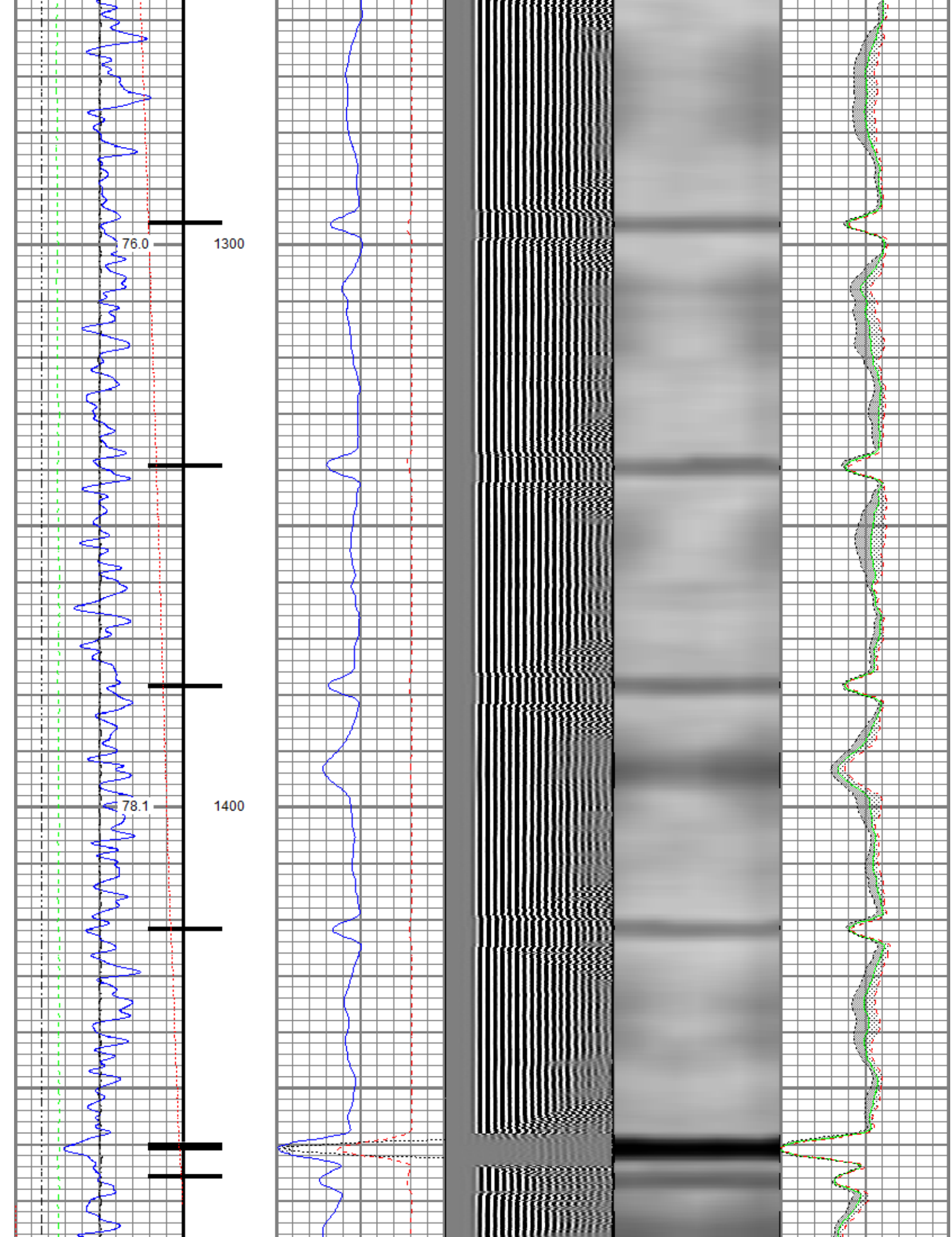


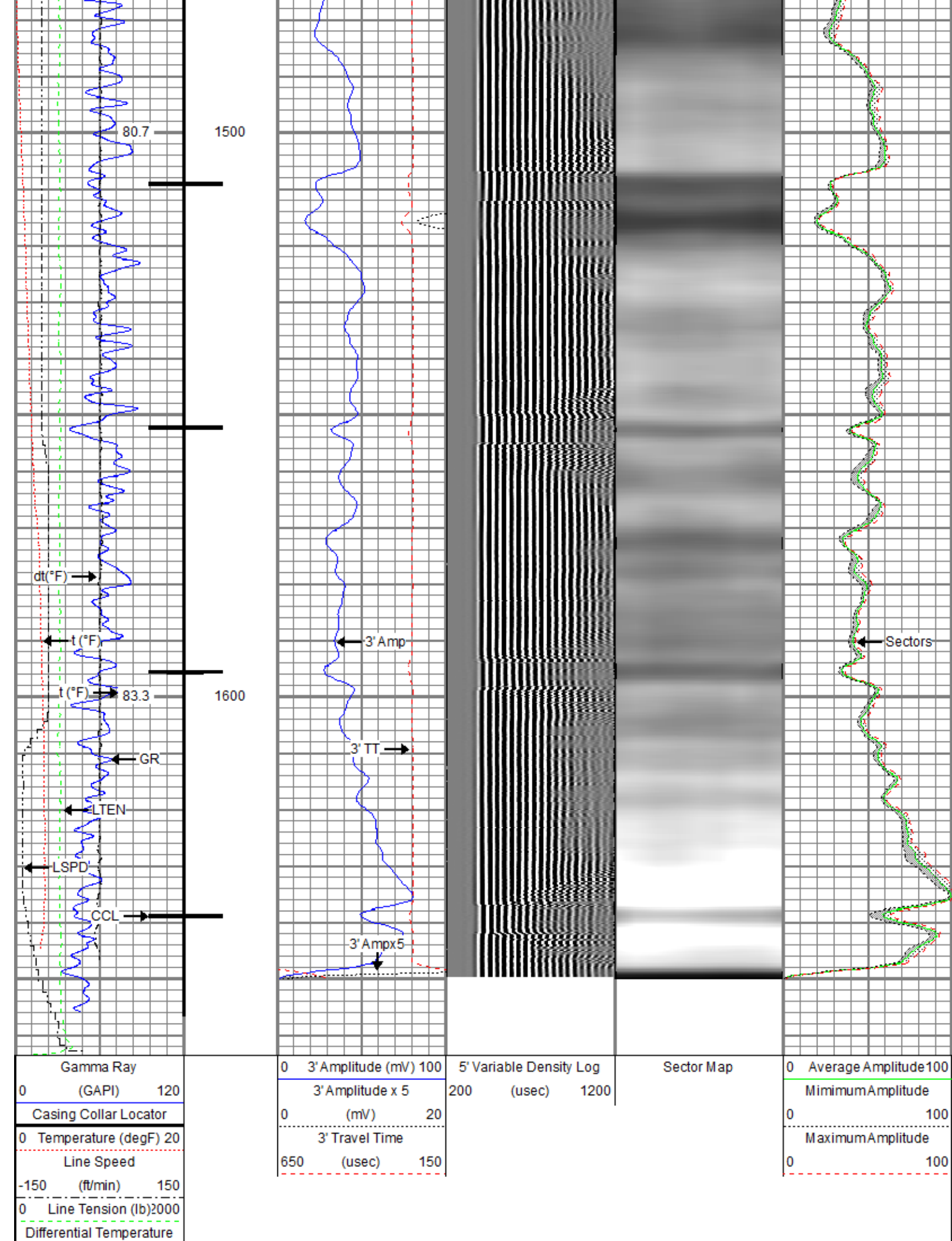












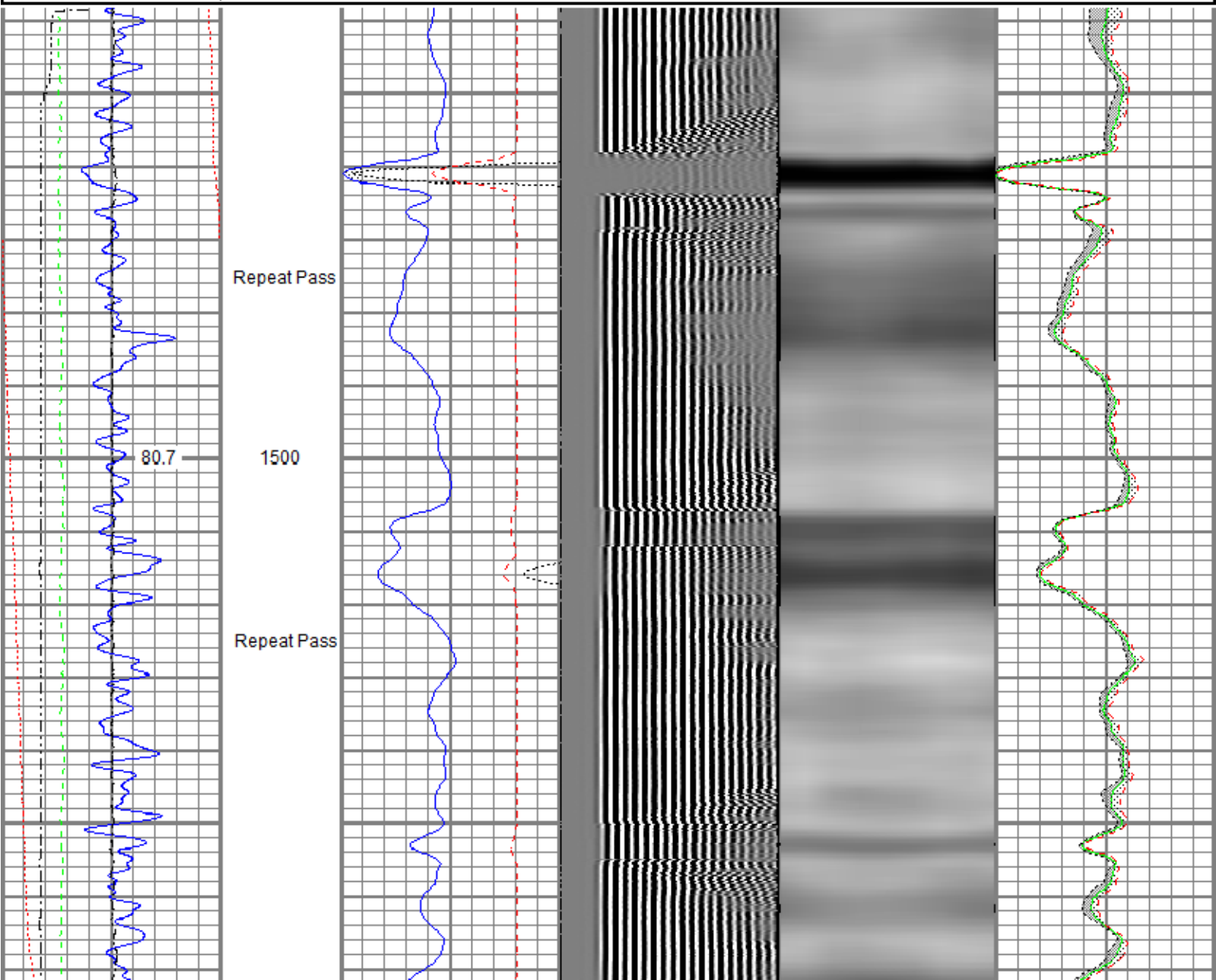


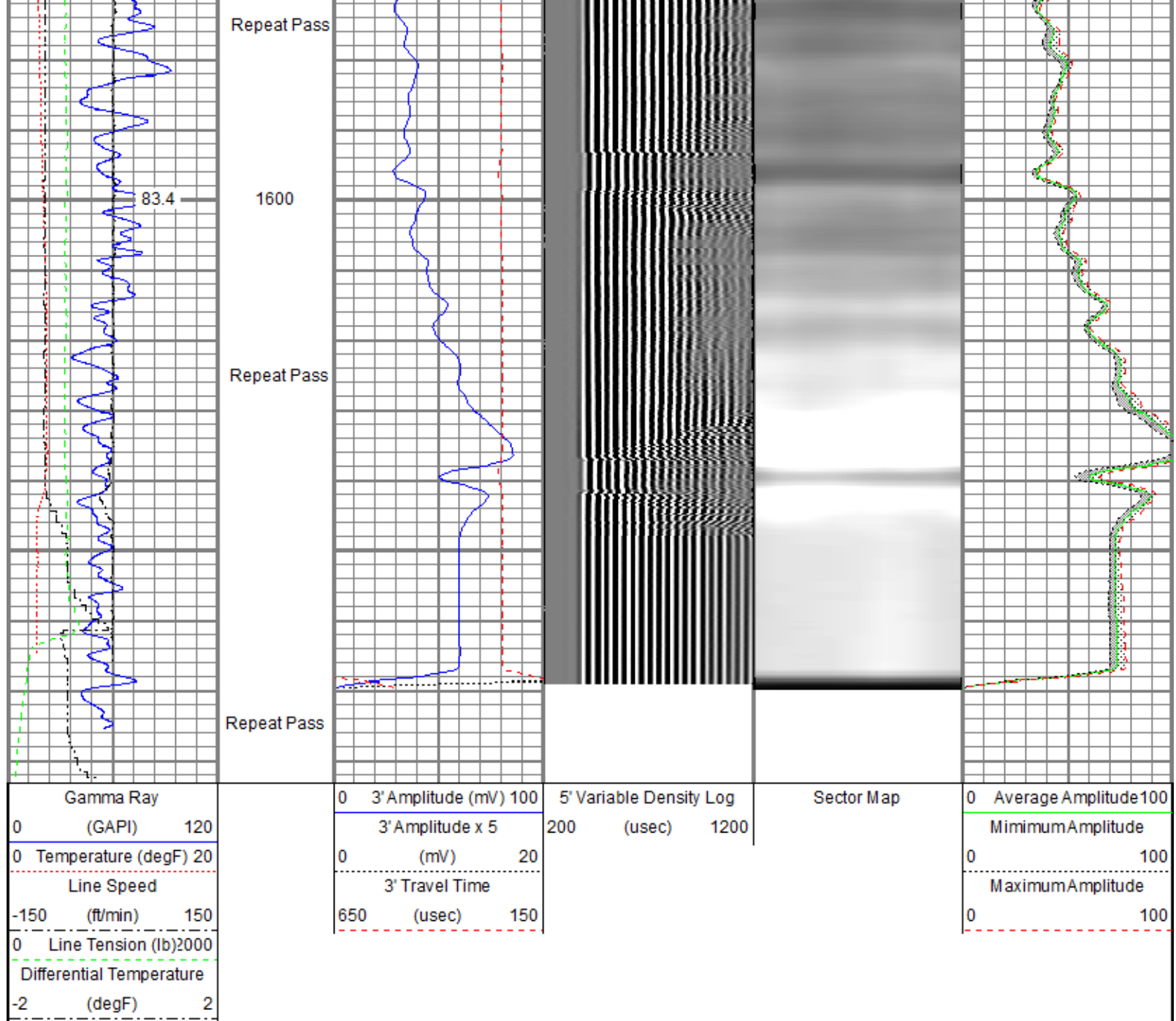
Repeat Pass

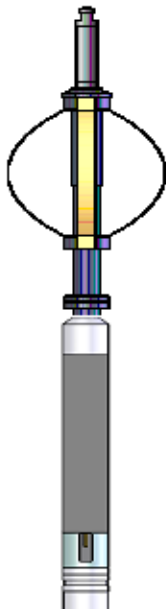
Recorded with 0 PSI Surface Induced Pressure

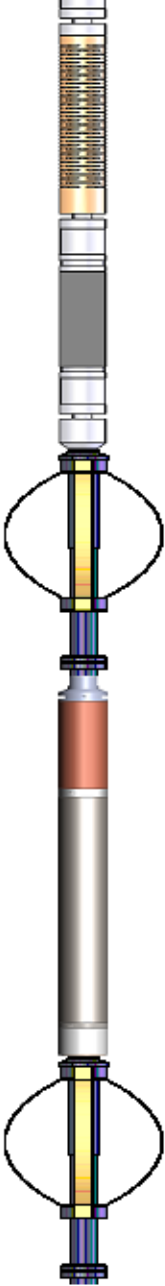

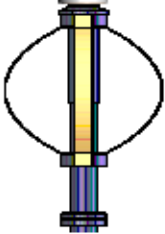
Database File oxy\0512331492_oxy_uprc p 05-24d_rbl_09-08-20\processed_0512331492_oxy_uprc p 05-24d_rbl_09-08-20.db
 Dataset Pathname Repeat/Pass2.2
 Presentation Format ros_radri
 Dataset Creation Tue Sep 08 13:45:11 2020
 Charted by Depth in Feet scaled 1:240

Gamma Ray	0 3' Amplitude (mV) 100	5' Variable Density Log	Sector Map	0 Average Amplitude 100
0 (GAPI) 120	3' Amplitude x 5	200 (usec) 1200		Minimum Amplitude
0 Temperature (degF) 20	0 (mV) 20			0 100
Line Speed	3' Travel Time			Maximum Amplitude
-150 (ft/min) 150	650 (usec) 150			0 100
0 Line Tension (lb) 2000				
Differential Temperature				
-2 (degF) 2				





Sensor	Offset (ft)	Schematic	Description	Length (ft)	O.D. (in)	Weight (lb)
TEMP	17.04		Titan CHD-14375 GO	1.03	1.44	3.60
			Titan 1-7/16" Assembled Electric Cable Head with 1" Fishing Neck			
			Probe CENT-2750 Probe 2-3/4" Electric Inline Bowspring Centralizer	2.88	2.75	20.00

WVFS8	14.81		Probe Radii-2750 RBT (120855) Probe 2-3/4" Radial Cement Bond Tool with Integral Temperature Sub	9.39	2.75	105.00
WVFS7	14.81					
WVFS6	14.81					
WVFS5	14.81					
WVFS4	14.81					
WVFS3	14.81					
WVFS2	14.81					
WVFS1	14.81					
WVFCAL	14.81					
WVF3FT	14.81					
WVF5FT	13.81					
CCL\$2	6.80		Probe CENT-2750 Probe 2-3/4" Electric Inline Bowspring Centralizer	2.88	2.75	20.00
CCL\$1	6.80					
GR	5.46		Probe GR-CCL-2750 6PB (FW1810-044) Probe 2-3/4" rev.1 Digital Scintillation Gamma Ray/CCL Combined with 6 Pin Bottom for CNT	4.80	2.75	55.00
LOCTIM	0.00		Probe CENT-2750 Probe 2-3/4" Electric Inline Bowspring Centralizer	2.88	2.75	20.00
UTCTIM	0.00					
Dataset: processed_0512331492_oxy_uprc p 05-24d_rbl_09-08-20.db: field/well/Main/Pass3.1						
Total length: 23.86 ft						
Total weight: 223.60 lb						
O.D.: 2.75 in						

Calibration Report		
Database File	c:\programdata\warrior\data\oxy\0512331492_oxy_uprc p 05-24d_rbl_09-08-20\processed_0512331492_oxy_uprc p 05-24d_rbl	
Dataset Pathname	Main/Pass3.1	
Dataset Creation	Tue Sep 08 08:31:05 2020	
Gamma Ray Calibration Report		
Serial Number:	FW1810-044	
Tool Model:	2750 6PB	
Performed:	Tue Dec 03 09:24:53 2019	
Calibrator Value:	637.0	GAPI
Background Reading:	105.3	cps
Calibrator Reading:	1221.0	cps
Sensitivity:	0.5709	GAPI/cps
Segmented Cement Bond Log Calibration Report		

Serial Number: 120855
Tool Model: 2750 RBT
Calibration Casing Diameter: 4.500 in
Calibration Depth: 25.097 ft

Master Calibration, performed (Derived):

	Raw (v)		Calibrated (mv)		Results	
	Zero	Cal	Zero	Cal	Gain	Offset
3'	0.006	0.576	0.800	81.196	140.937	-0.050
CAL	0.739	0.729				
5'	0.006	0.584	0.800	81.196	139.174	-0.023
SUM						
S1	0.000	0.620	0.000	100.000	161.487	-0.052
S2	0.007	0.608	0.000	100.000	166.180	-1.096
S3	0.006	0.603	0.000	100.000	167.665	-1.077
S4	0.008	0.588	0.000	100.000	172.441	-1.315
S5	0.007	0.565	0.000	100.000	179.240	-1.183
S6	0.008	0.551	0.000	100.000	183.955	-1.418
S7	0.007	0.544	0.000	100.000	186.295	-1.373
S8	0.007	0.586	0.000	100.000	172.783	-1.245

Air Zero Calibration, performed Tue Sep 08 07:50:56 2020:

	Raw (v)		Calibrated (v)		Results	
	Zero		Zero		Offset	
3'	0.007		0.000		0.000	
5'	0.007		0.000		0.000	
SUM						
S1	0.001		0.000		-0.000	
S2	0.008		0.000		-0.000	
S3	0.008		0.000		-0.000	
S4	0.007		0.000		-0.000	
S5	0.008		0.000		0.000	
S6	0.008		0.000		0.000	
S7	0.007		0.000		0.000	
S8	0.008		0.000		-0.000	

Temperature Calibration Report

Serial Number: 120855
Tool Model: 2750 RBT
Performed: Wed Dec 18 13:34:18 2019

	Reference	Reading
Low Reference:	100.00 degF	112.30 degF
High Reference:	350.00 degF	394.75 degF

Gain: 0.89
Offset: 0.60
Delta Spacing 1



Company Kerr-McGee Oil & Gas Onshore, L.P.
Well UPRC P 05-24D
Field Wattenberg
County Weld
State Colorado