



Radial Cement Bond
Gamma Ray
Casing Collar Log

Company Kerr-McGee Oil & Gas Onshore, L.P.

Well UPRC P 05-24D

Field Wattenberg

County Weld State Colorado

Location: API #: 05-123-31492

SEC 5 TWP 3N RGE 67W

Permanent Datum Ground Level Elevation 4875'
Log Measured From Kelly Bushing 10 FT
Drilling Measured From Kelly Bushing

Other Services
JBGRCIBPX3
Dump Bailer XB
Jet Cut
Elevation
K.B. 4885'
D.F. ---
G.L. 4875'

Company Kerr-McGee Oil & Gas Onshore, L.P.
Well UPRC P 05-24D
Field Wattenberg
County Weld
State Colorado

Date	01-SEP-2020						
Run Number	Three						
Depth Driller	7996 FT						
Depth Logger	2004 FT						
Bottom Logged Interval	1991 FT						
Top Log Interval	Surface						
Open Hole Size	---						
Type Fluid	Water						
Density / Viscosity	8.34 lb/gal						
Max. Recorded Temp.	91°F						
E estimated Cement Top	See Log						
Time Well Ready	ROA						
Time Logger on Bottom	12:33						
E equipment Number	HD-324						
Location	Platteville, CO						
Recorded By	J. Morrison						
Witnessed By	Luis Morales						
Borehole Record				Tubing Record			
Run Number	Bit	From	To	Size	Weight	From	To
Casing Record	Size (in)	Wgt (lbs/ft)		Grade	Top		Bottom
Surface Casing	8 5/8	24		J-55	Surface		603 FT
Intermediate #1	4 1/2	11.6		M-80	Surface		---
Intermediate #2							
Liner							

<<< Fold Here >>>

All interpretations are opinions based on inferences from electrical or other measurements and we cannot and do not guarantee the accuracy or correctness of any interpretation, and we shall not, except in the case of gross or willful negligence on our part, be liable or responsible for any loss, costs, damages, or expenses incurred or sustained by anyone resulting from any interpretation made by any of our officers, agents or employees. These interpretations are also subject to our general terms and conditions set out in our current Price Schedule.

Comments

Log ran as per customer request
Depth referenced to Kelly Bushing of 10 FT
Gauge Ring/Junk Basket ran to 7824 FT
Log ran with 0 PSI Surface Induced Pressure
Logging tools were clean and free of debris upon completion of operations
Thank you for choosing Reliance Oilfield Services, LLC!!

Main Pass

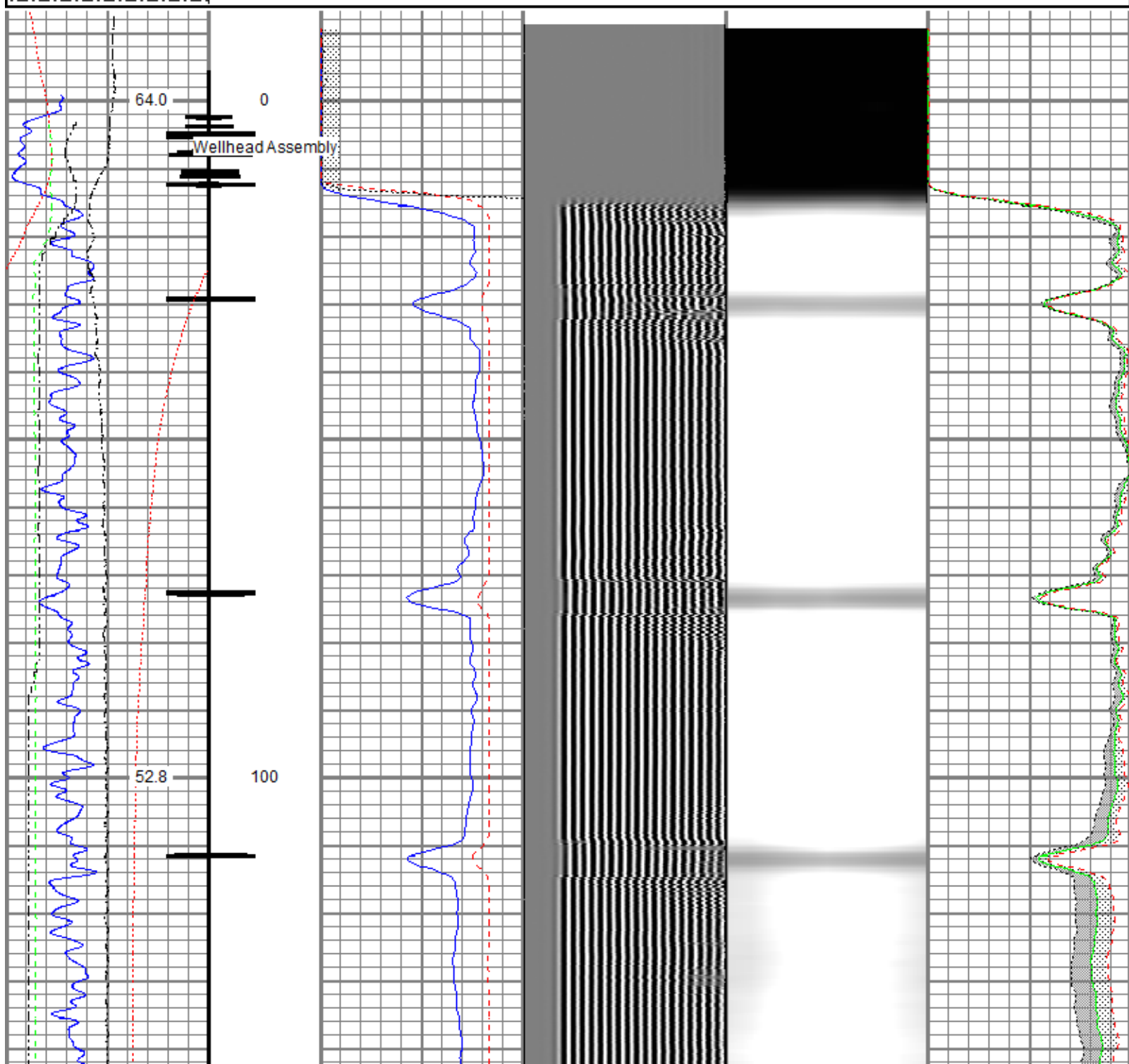


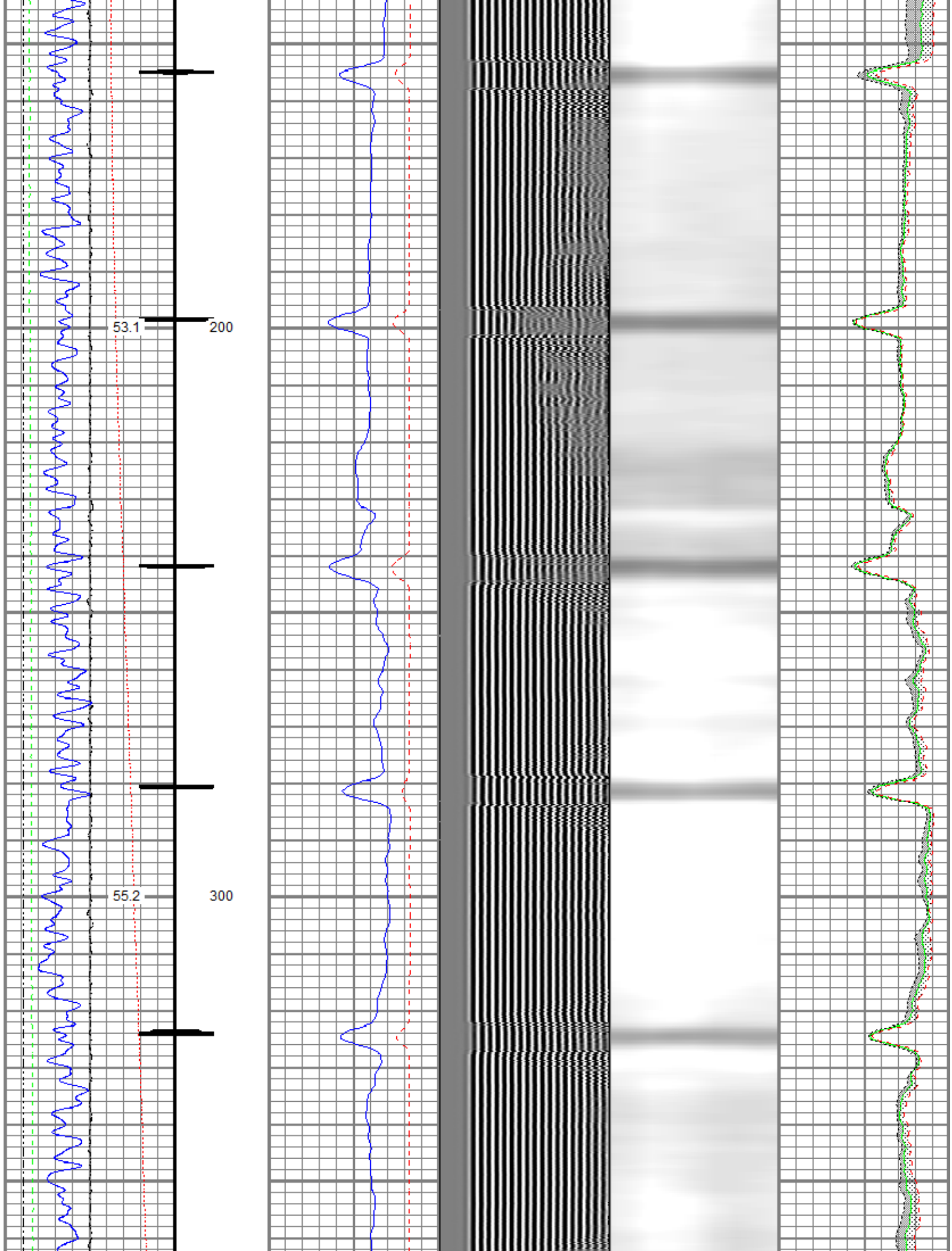
Recorded With 0 PSI Surface Induced Pressure

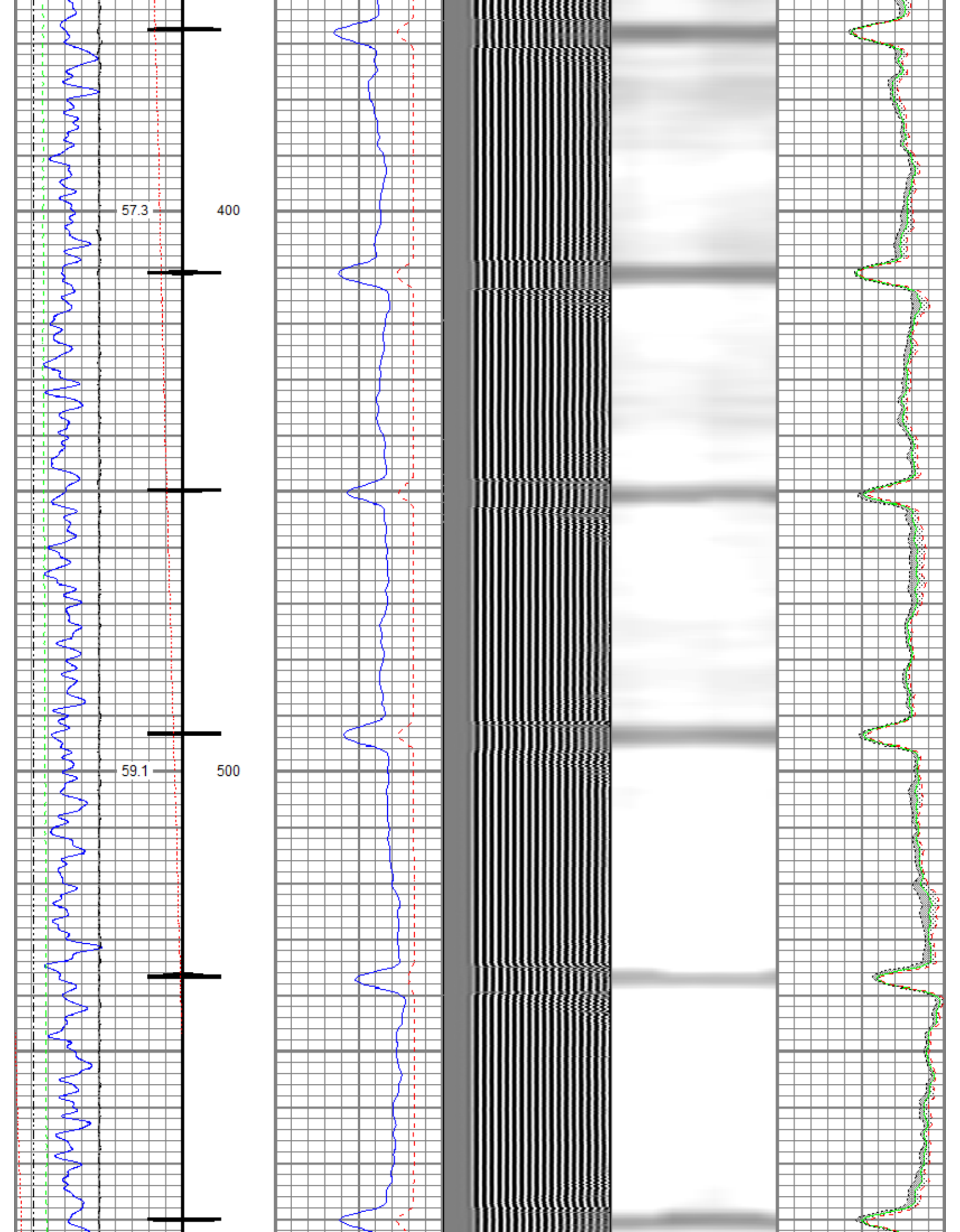
Recorded with 0 PSI Surface Induced Pressure

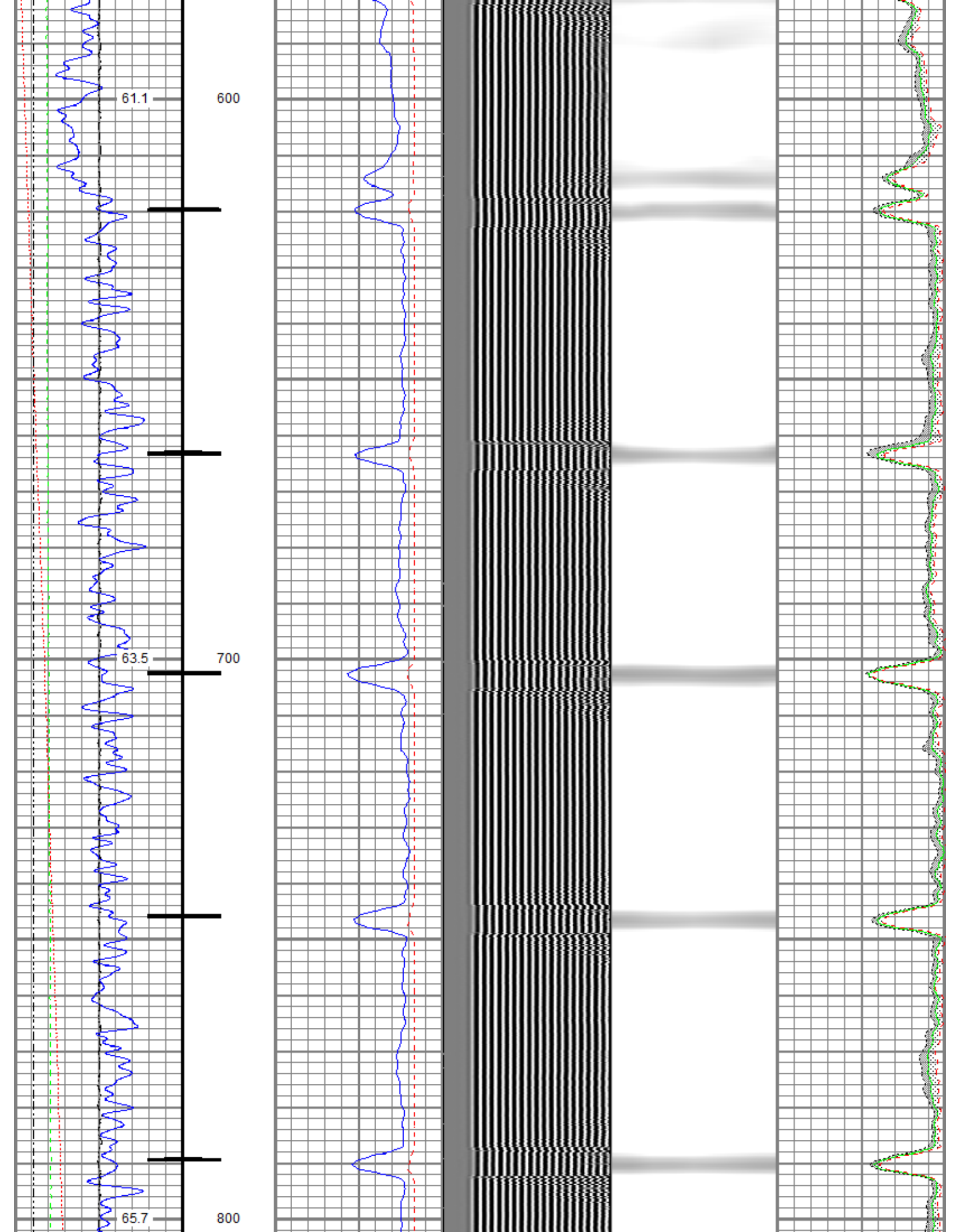
Database File oxy\0512331492_oxy_uprc p 05-24d_rbl_09-01-20\processed_0512331492_oxy_uprc p 05-24d_rbl_09-01-20.db
 Dataset Pathname Main/pass3.2
 Presentation Format ros_radrii
 Dataset Creation Thu Sep 03 14:23:46 2020
 Charted by Depth in Feet scaled 1:240

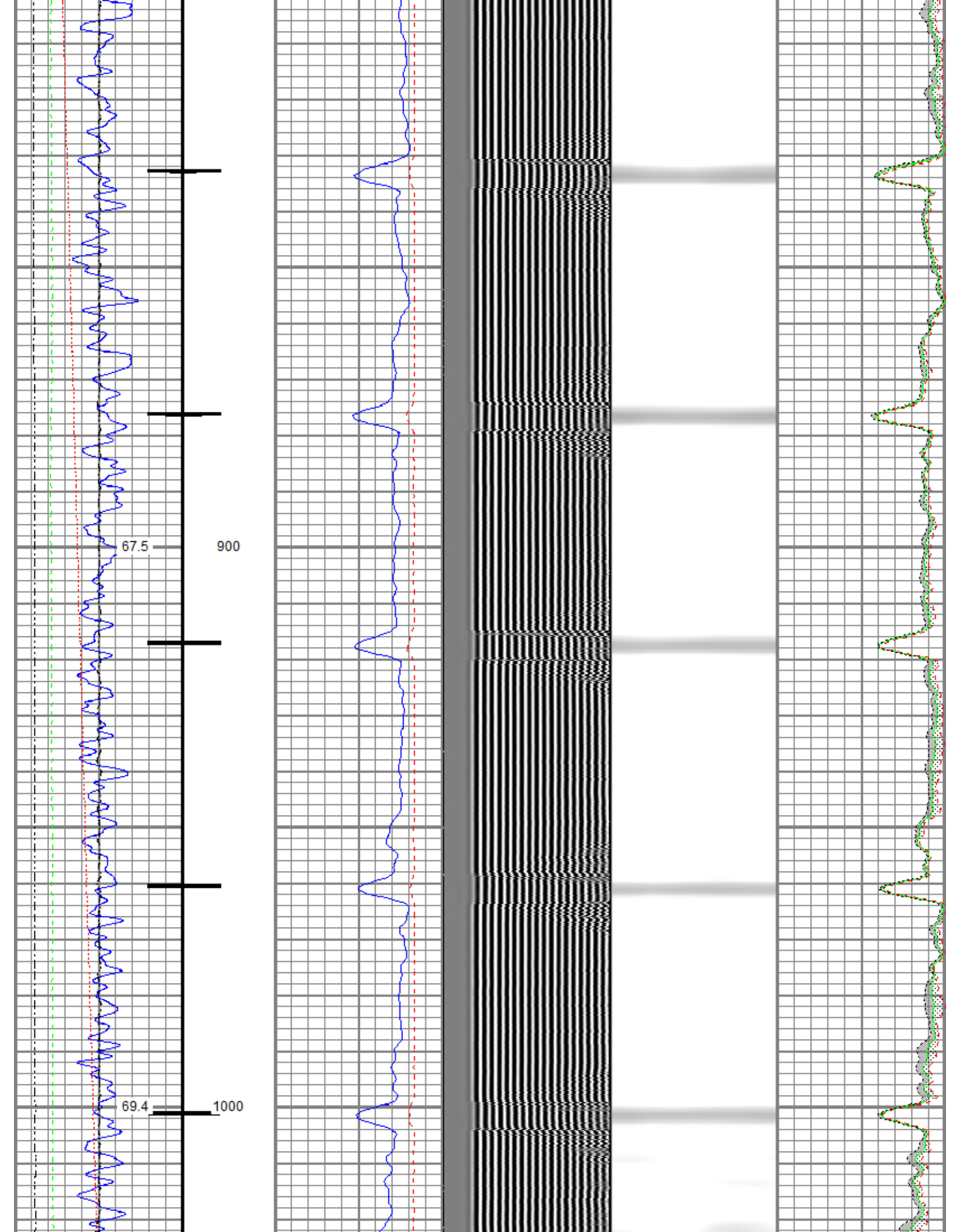
Gamma Ray	0	3' Amplitude (mV) 100	5' Variable Density Log	Sector Map	0	Average Amplitude 100
(GAPI) 120		3' Amplitude x 5	200 (usec) 1200			Minimum Amplitude
Casing Collar Locator	0	(mV) 20			0	100
Temperature (degF) 20		3' Travel Time				Maximum Amplitude
Line Speed	650	(usec) 150			0	100
-150 (ft/min) 150						
Line Tension (lb) 2000						
Differential Temperature						
-2 (degF) 2						

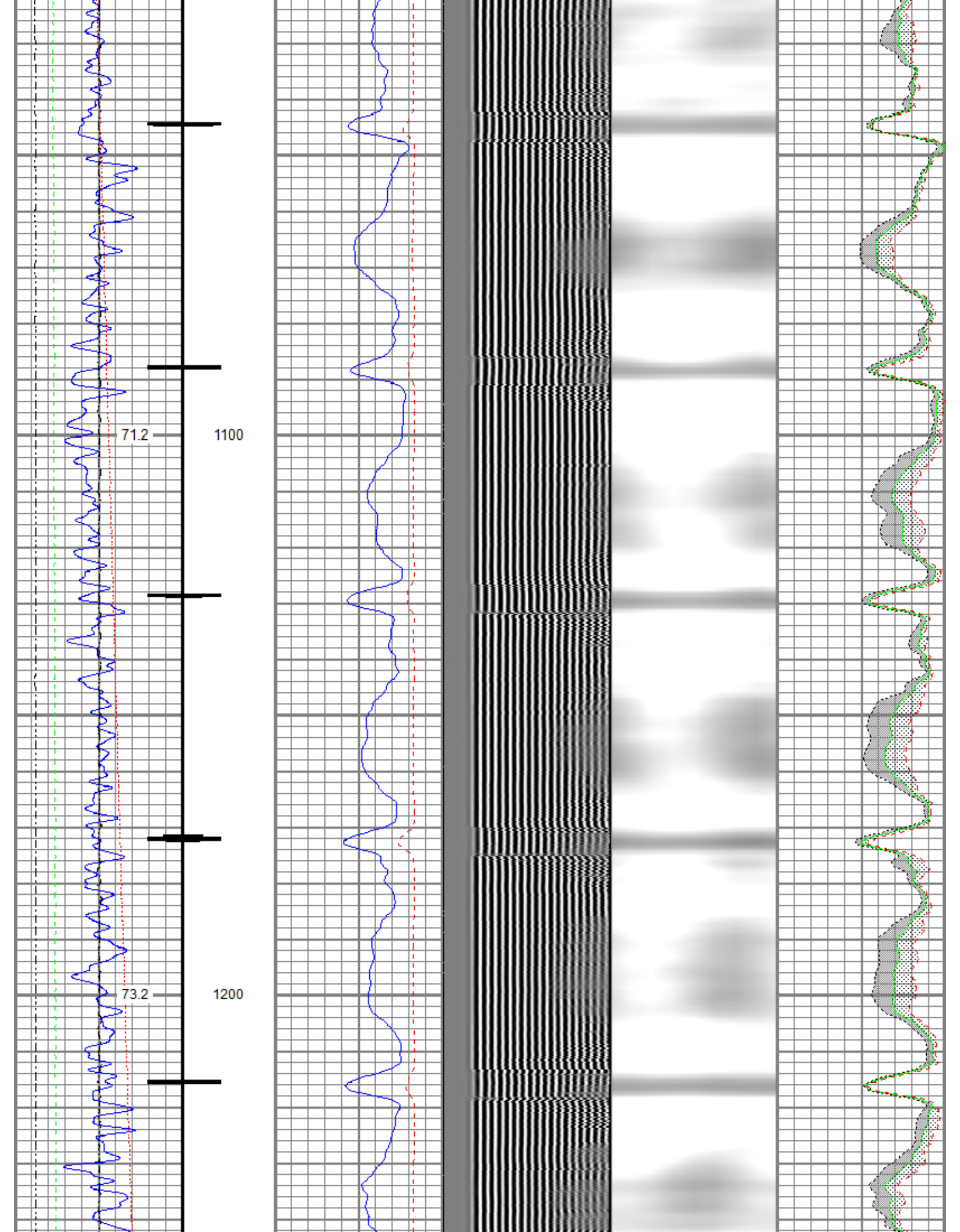


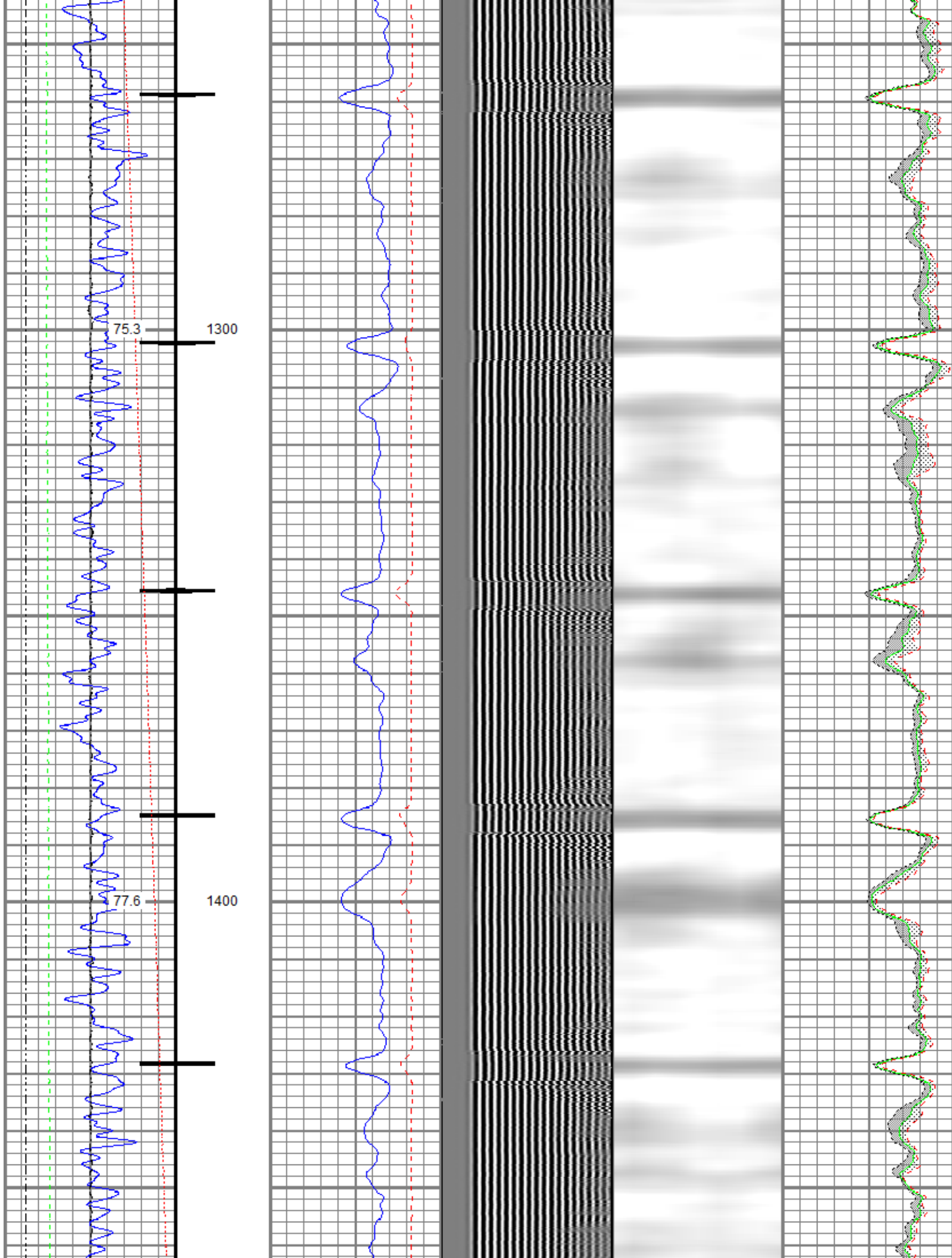


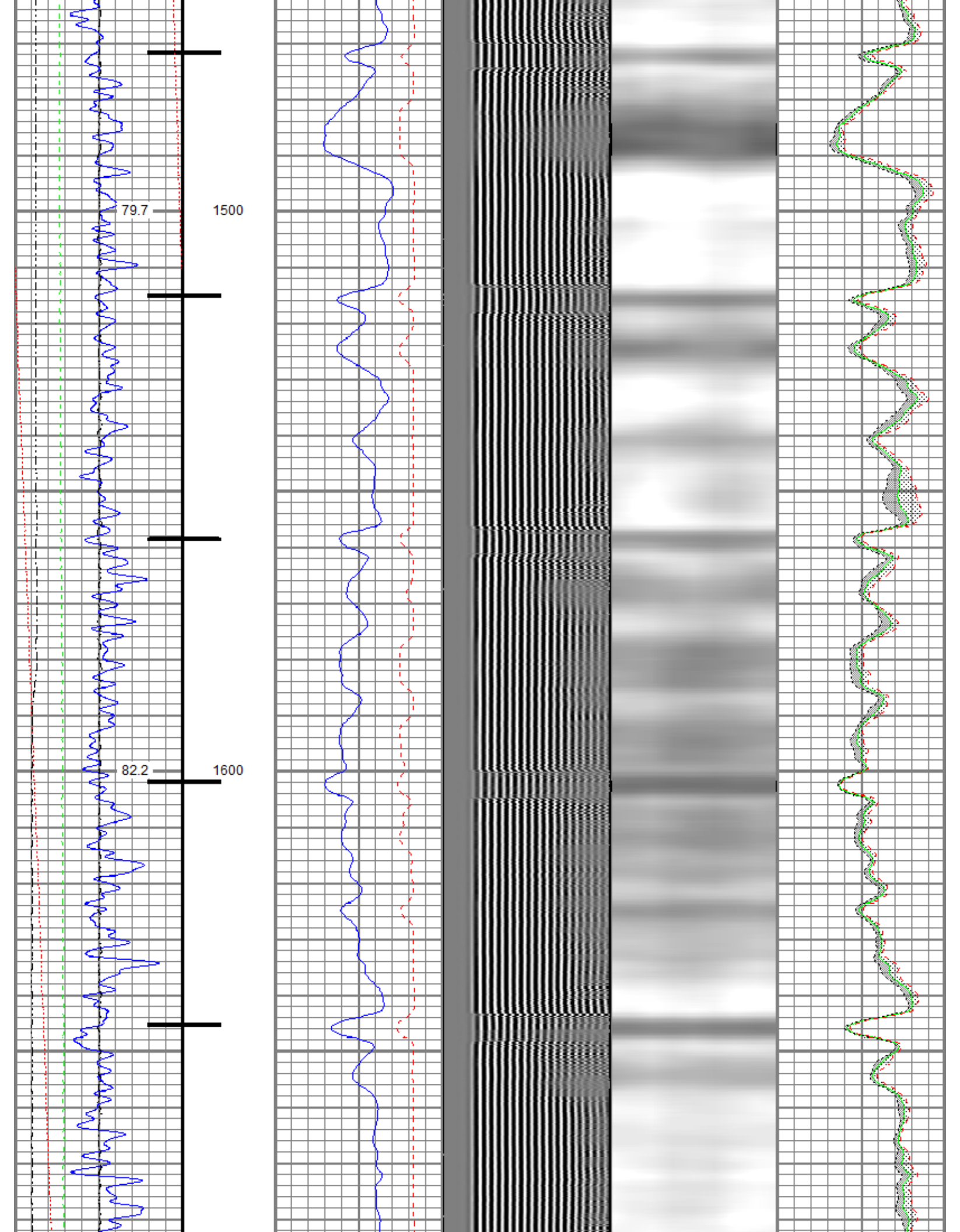


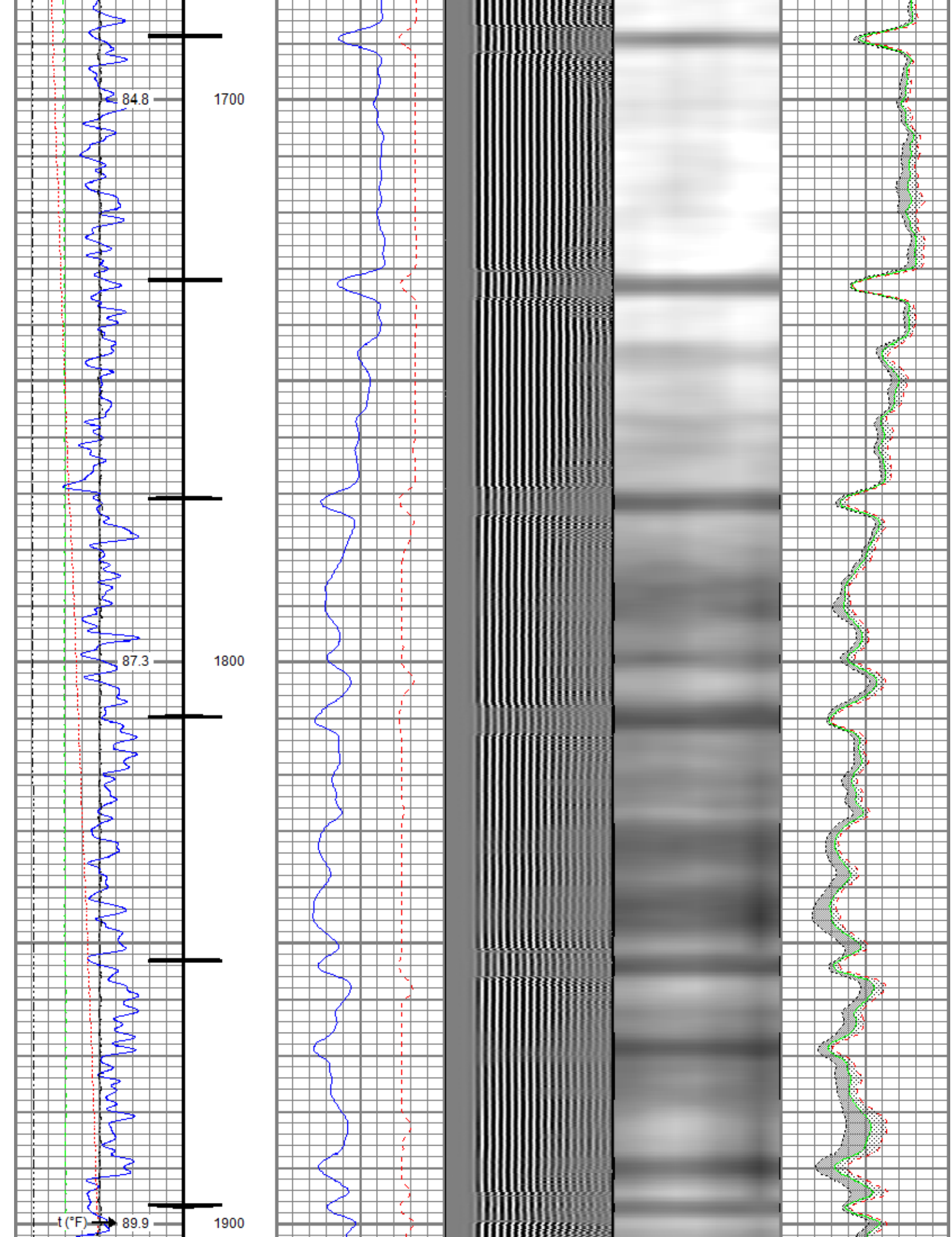


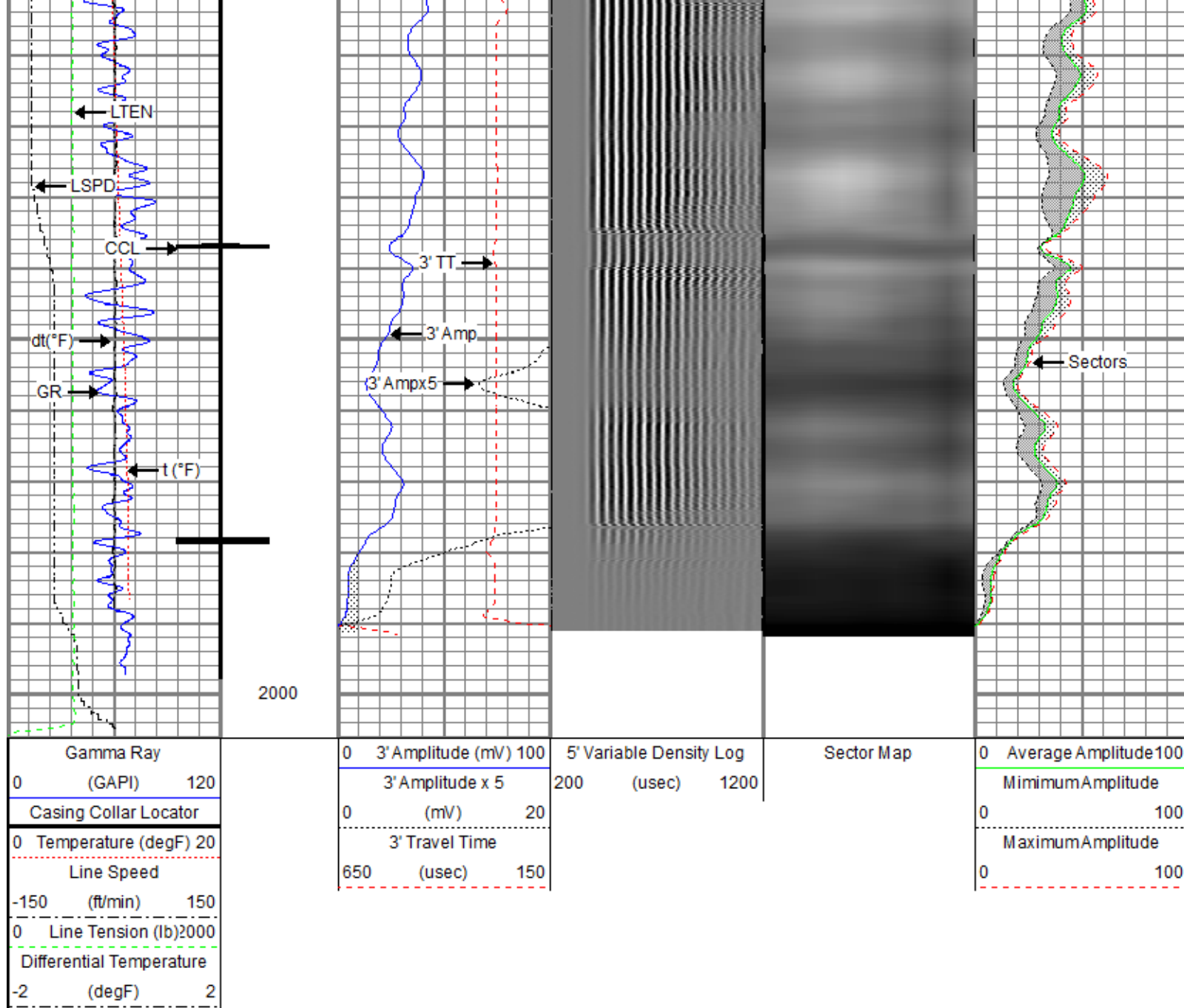








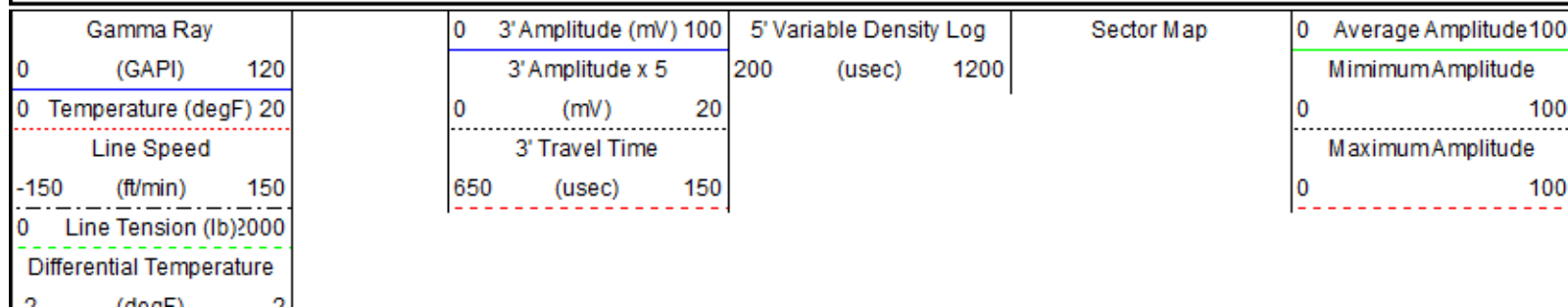


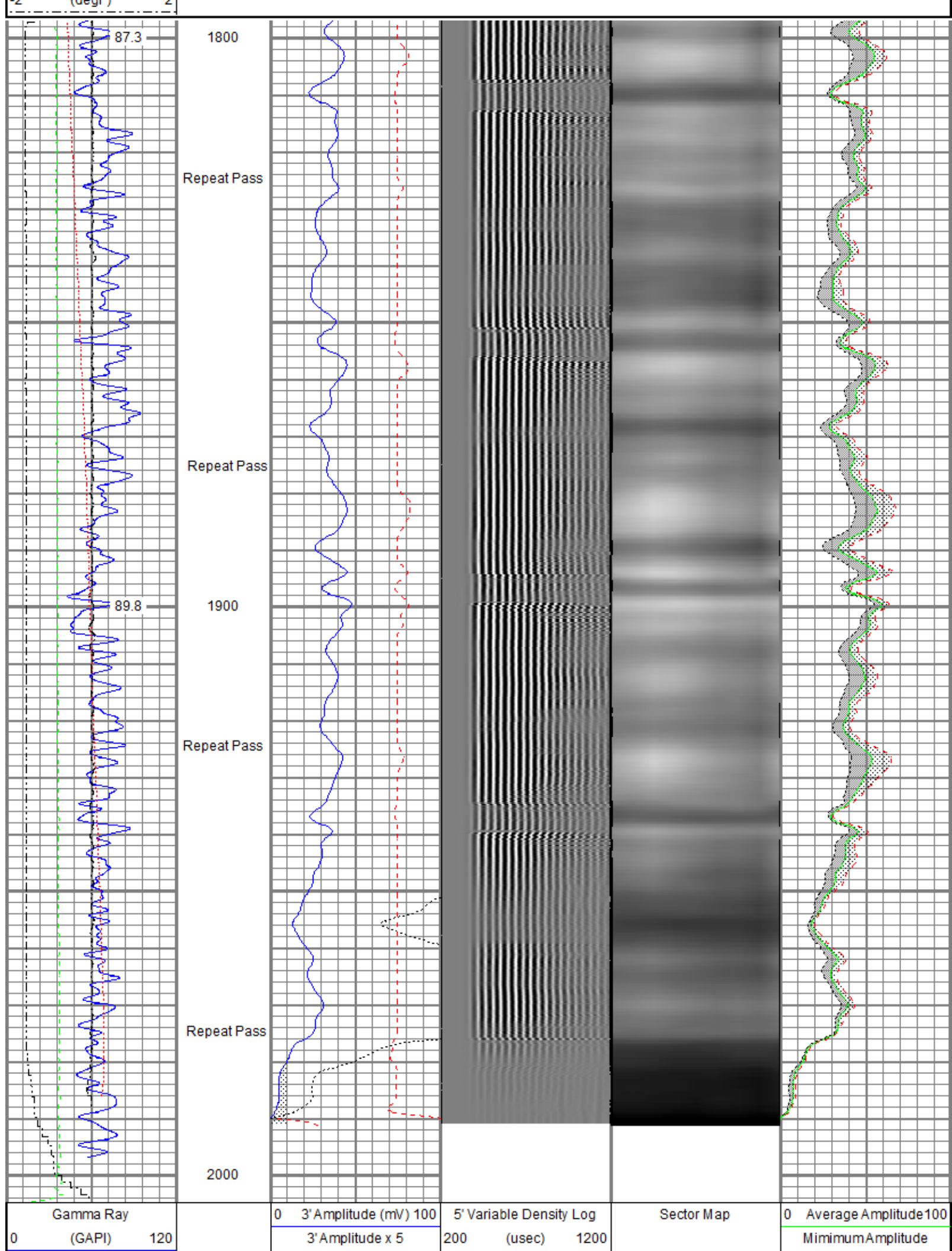


Repeat Pass

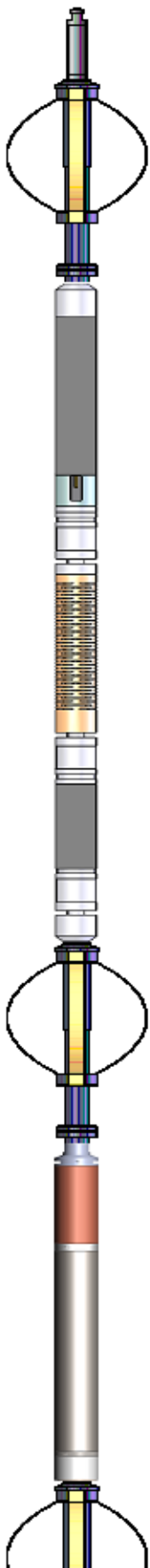
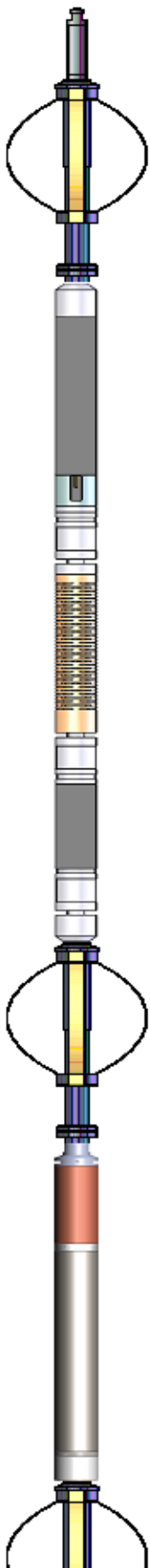
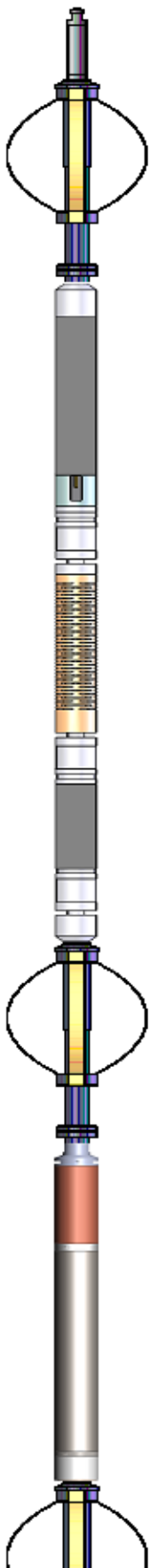
Recorded With 0 PSI Surface Induced Pressure


Database File oxy\0512331492_oxy_uprc p 05-24d_rbl_09-01-20\processed_0512331492_oxy_uprc p 05-24d_rbl_09-01-20.db
 Dataset Pathname Repeat/pass2.2
 Presentation Format ros_radrii
 Dataset Creation Thu Sep 03 14:27:40 2020
 Charted by Depth in Feet scaled 1:240





0	Temperature (degF)	20	0	(mV)	20	0		100
Line Speed			3' Travel Time			Maximum Amplitude		
-150	(ft/min)	150	650	(usec)	150	0		100
0	Line Tension (lb)	2000						
Differential Temperature								
-2	(degF)	2						

Sensor	Offset (ft)	Schematic	Description	Length (ft)	O.D. (in)	Weight (lb)
TEMP	17.04		Titan CHD-14375 GO	1.03	1.44	3.60
			Titan 1-7/16" Assembled Electric Cable Head with 1" Fishing Neck			
			Probe CENT-2750	2.88	2.75	20.00
			Probe 2-3/4" Electric Inline Bowspring Centralizer			
WVFS8	14.81		Probe Radii-2750 RBT (120855)	9.39	2.75	105.00
WVFS7	14.81		Probe 2-3/4" Radial Cement Bond Tool with Integral Temperature Sub			
WVFS6	14.81					
WVFS5	14.81					
WVFS4	14.81					
WVFS3	14.81					
WVFS2	14.81					
WVFS1	14.81					
WVFCAL	14.81					
WVF3FT	14.81					
WVF5FT	13.81					
CCL\$2 CCL\$1	6.80		Probe CENT-2750	2.88	2.75	20.00
	6.80		Probe 2-3/4" Electric Inline Bowspring Centralizer			
GR	5.46		Probe GR-CCL-2750 6PB (FW1810-001)	4.80	2.75	55.00
			Probe 2-3/4" rev.1 Digital Scintillation Gamma Ray/CCL Combined with 6 Pin Bottom for CNT			

LOCTIM	0.00		Probe CENT-2750 Probe 2-3/4" Electric Inline Bowspring Centralizer	2.88	2.75	20.00
UTCTIM	0.00					
Dataset: processed_0512331492_oxy_uprc p 05-24d_rbl_09-01-20.db: field/well/Main/pass3.2 Total length: 23.86 ft Total weight: 223.60 lb O.D.: 2.75 in						

Calibration Report	
Database File	c:\programdata\warrior\data\oxy\0512331492_oxy_uprc p 05-24d_rbl_09-01-20\processed_0512331492_oxy_uprc p 05-24d_rbl
Dataset Pathname	Main/pass3.2
Dataset Creation	Thu Sep 03 14:23:46 2020

Gamma Ray Calibration Report		
Serial Number:	FW1810-001	
Tool Model:	2750 6PB	
Performed:	Tue Dec 03 09:24:53 2019	
Calibrator Value:	637.0	GAPI
Background Reading:	100.1	cps
Calibrator Reading:	1264.5	cps
Sensitivity:	0.5471	GAPI/cps

Segmented Cement Bond Log Calibration Report		
Serial Number:	120855	
Tool Model:	2750 RBT	
Calibration Casing Diameter:	4.500	in
Calibration Depth:	0.105	ft

Master Calibration, performed (Derived):						
	Raw (v)		Calibrated (mv)		Results	
	Zero	Cal	Zero	Cal	Gain	Offset
3'	0.007	0.229	0.000	81.196	365.471	-2.659
CAL	0.329	0.331				
5'	0.010	0.224	0.000	81.196	378.546	-3.668
SUM						
S1	0.008	0.227	0.000	100.000	456.301	-3.763
S2	0.008	0.228	0.000	100.000	454.235	-3.655
S3	0.008	0.228	0.000	100.000	454.648	-3.590
S4	0.009	0.236	0.000	100.000	440.333	-4.092
S5	0.009	0.237	0.000	100.000	439.899	-4.121
S6	0.008	0.237	0.000	100.000	436.076	-3.444
S7	0.007	0.229	0.000	100.000	449.706	-3.204
S8	0.008	0.224	0.000	100.000	461.760	-3.555

Air Zero Calibration, performed Tue Sep 01 12:12:44 2020:			
	Raw (v)		Results
	Zero	Zero	Offset
3'	0.000	0.000	0.000
5'	0.000	0.000	0.000
SUM			
S1	0.000	0.000	0.000
S2	0.000	0.000	0.000
S3	0.000	0.000	0.000
S4	0.000	0.000	0.000
S5	0.000	0.000	0.000

S5	0.000	0.000	0.000
S6	0.000	0.000	0.000
S7	0.000	0.000	0.000
S8	0.000	0.000	0.000

Temperature Calibration Report

Serial Number: 120855
Tool Model: 2750 RBT
Performed: Wed Dec 18 13:34:18 2019

	Reference	Reading
Low Reference:	100.00 degF	112.30 degF
High Reference:	350.00 degF	394.75 degF
Gain:	0.89	
Offset:	0.60	
Delta Spacing	1	



Company Kerr-McGee Oil & Gas Onshore, L.P.
Well UPRC P 05-24D
Field Wattenberg
County Weld
State Colorado