



Precision

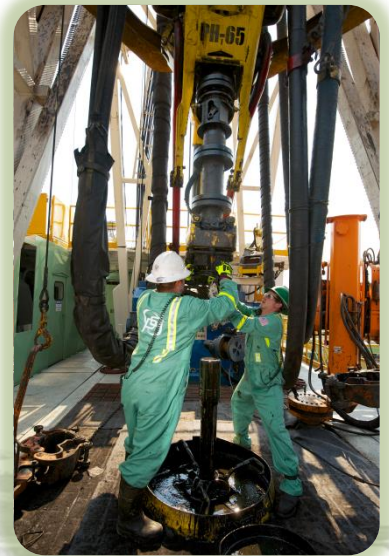
Directional Services

Section One

Plan vs. Actual

Directional Survey to TD

HIGH
PERFORMANCE
HIGH VALUE





WHITING PETROLEUM CORP.
Project: Weld County, CO
Site: Sec 26-T10N-R58W
Well: Razor Federal #26I-3546
Wellbore: Original Hole
Design: Original Hole



100' ML Entry
Sec26-T10N-R58W
2559'FSL, 909'FEL

7"CSG
Sec26-T10N-R58W
2489'FSL, 910'FEL

Surface
Section 26-T10N-R58W
2414'FSL, 792'FEL

100' from ML

100' ML Entry #26I-3546

7 " Casing Point #26I-3546

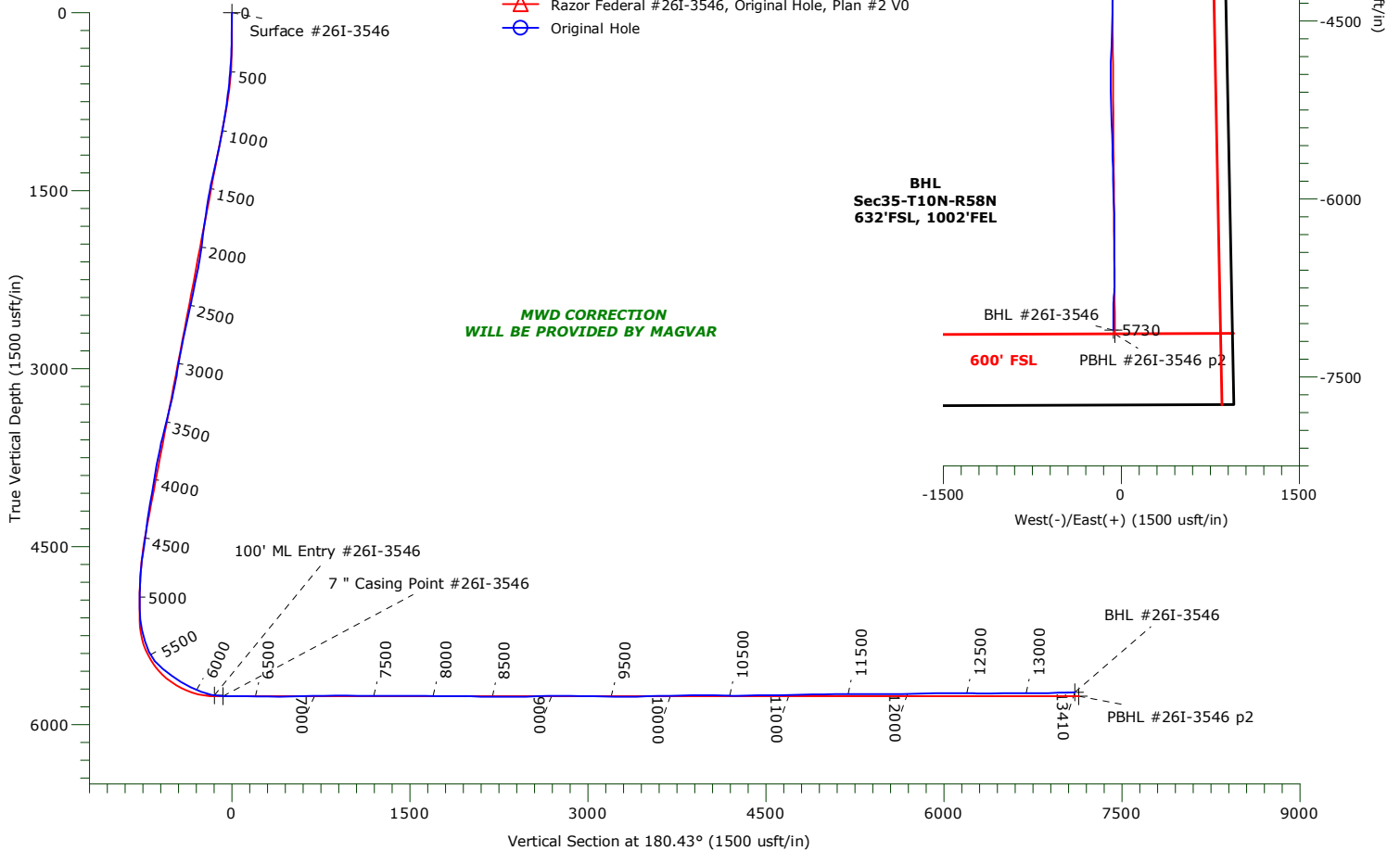
Surface #26I-3546

ANNOTATIONS				
TVD	MD	+N/-S	+E/-W	Annotation
5754.27	6157.00	145.03	-120.22	100' ML Entry
5760.22	6227.00	75.32	-120.38	7" Casing Point

LEGEND

- △ Razor Federal #26I-3546, Original Hole, Plan #2 V0
- Original Hole

MWD CORRECTION
WILL BE PROVIDED BY MAGVAR



WELLBORE TARGET DETAILS

Name	TVD	+N/-S	+E/-W	Northing	Easting	Latitude	Longitude	Shape
Surface #26I-3546	0.00	0.00	0.00	1541940.58	3463535.85	40.808994°N	103.825458°W	Point
BHL #26I-3546	5729.57	-7103.92	-66.14	1534836.67	3463603.87	40.789496°N	103.825697°W	Point
100' ML Entry #26I-3546	5754.27	145.03	-120.22	1542083.31	3463412.92	40.809392°N	103.825893°W	Point
7" Casing Point #26I-3546	5760.22	75.32	-120.38	1542013.62	3463414.07	40.809201°N	103.825893°W	Point
PBHL #26I-3546 p2	5762.00	-7135.95	-53.84	1534804.89	3463616.77	40.789408°N	103.825653°W	Point

Precision Drilling Corporation

Survey Report

Company:	WHITING PETROLEUM CORP.	Local Co-ordinate Reference:	Well Razor Federal #26I-3546
Project:	Weld County, CO	TVD Reference:	4711'GL+21'KB @ 4732.00usft (Unit 406)
Site:	Sec 26-T10N-R58W	MD Reference:	4711'GL+21'KB @ 4732.00usft (Unit 406)
Well:	Razor Federal #26I-3546	North Reference:	True
Wellbore:	Original Hole	Survey Calculation Method:	Minimum Curvature
Design:	Original Hole	Database:	Local Database

Project	Weld County, CO		
Map System:	US State Plane 1983	System Datum:	Mean Sea Level
Geo Datum:	North American Datum 1983		
Map Zone:	Colorado Northern Zone		

Site		Sec 26-T10N-R58W			
Site Position:		Northing:	1,541,850.52 usft	Latitude:	40.808747°N
From:	Map	Easting:	3,463,537.56 usft	Longitude:	103.825459°W
Position Uncertainty:	0.00 usft	Slot Radius:	13.20 in	Grid Convergence:	1.08 °

Well		Razor Federal #26I-3546				
Well Position	+N-S	0.00 usft	Northing:	1,541,940.58 usft	Latitude:	40.808995°N
	+E-W	0.00 usft	Easting:	3,463,535.85 usft	Longitude:	103.825459°W
Position Uncertainty		0.00 usft	Wellhead Elevation:	0.00 usft	Ground Level:	4,711.00 usft

Wellbore	Original Hole				
Magnetics	Model Name	Sample Date	Declination (°)	Dip Angle (°)	Field Strength (nT)
	IGRF2015	05/13/17	7.74	67.32	52,710

Design	Original Hole				
Audit Notes:					
Version:	1.0	Phase:	ACTUAL	Tie On Depth:	0.00
Vertical Section:	Depth From (TVD) (usft)	+N/-S (usft)	+E/-W (usft)	Direction (°)	
	0.00	0.00	0.00	180.43	

Survey Program	Date	06/07/17			
From (usft)	To (usft)	Survey (Wellbore)	Tool Name	Description	
190.00	13,351.00	Survey #1 (Original Hole)	MWD+IFR1+MS+sag	Fixed:v2:crustal dec & 3-axis correction + sag OWSG BLIND	
13,410.00	13,410.00	Survey #2 (Original Hole)	BLIND		

Survey										
Measured Depth (usft)	Inclination (°)	Azimuth (°)	Vertical Depth (usft)	+N/-S (usft)	+E/-W (usft)	Vertical Section (usft)	Dogleg Rate (°/100usft)	Build Rate (°/100usft)	Turn Rate (°/100usft)	
0.00	0.00	0.00	0.00	0.00	0.00	0.00	0.00	0.00	0.00	
190.00	0.72	58.17	190.00	0.63	1.01	-0.64	0.38	0.38	0.00	
225.00	0.81	63.01	224.99	0.86	1.42	-0.87	0.32	0.26	13.83	
318.00	1.90	16.84	317.97	2.63	2.45	-2.65	1.57	1.17	-49.65	
410.00	3.62	7.51	409.86	6.97	3.28	-7.00	1.93	1.87	-10.14	
504.00	4.67	4.50	503.61	13.73	3.96	-13.76	1.14	1.12	-3.20	
597.00	5.74	351.58	596.23	22.10	3.58	-22.13	1.70	1.15	-13.89	
690.00	6.81	350.57	688.67	32.14	2.00	-32.16	1.16	1.15	-1.09	
783.00	8.23	347.58	780.87	44.08	-0.34	-44.08	1.58	1.53	-3.22	
876.00	9.15	347.73	872.80	57.81	-3.34	-57.78	0.99	0.99	0.16	

Precision Drilling Corporation

Survey Report

Company:	WHITING PETROLEUM CORP.	Local Co-ordinate Reference:	Well Razor Federal #26I-3546
Project:	Weld County, CO	TVD Reference:	4711'GL+21'KB @ 4732.00usft (Unit 406)
Site:	Sec 26-T10N-R58W	MD Reference:	4711'GL+21'KB @ 4732.00usft (Unit 406)
Well:	Razor Federal #26I-3546	North Reference:	True
Wellbore:	Original Hole	Survey Calculation Method:	Minimum Curvature
Design:	Original Hole	Database:	Local Database

Survey

Measured Depth (usft)	Inclination (°)	Azimuth (°)	Vertical Depth (usft)	+N/-S (usft)	+E/-W (usft)	Vertical Section (usft)	Dogleg Rate (°/100usft)	Build Rate (°/100usft)	Turn Rate (°/100usft)
969.00	10.48	345.53	964.44	73.23	-7.03	-73.17	1.49	1.43	-2.37
1,063.00	11.68	344.90	1,056.68	90.69	-11.64	-90.60	1.28	1.28	-0.67
1,156.00	11.95	345.96	1,147.71	109.12	-16.43	-108.99	0.37	0.29	1.14
1,249.00	12.37	345.73	1,238.63	128.12	-21.22	-127.95	0.45	0.45	-0.25
1,343.00	13.18	345.97	1,330.30	148.27	-26.30	-148.07	0.86	0.86	0.26
1,434.00	13.10	346.06	1,418.92	168.34	-31.30	-168.10	0.09	-0.09	0.10
1,527.00	11.00	350.14	1,509.86	187.32	-35.36	-187.05	2.44	-2.26	4.39
1,621.00	9.69	347.18	1,602.33	203.87	-38.65	-203.57	1.50	-1.39	-3.15
1,714.00	8.01	344.54	1,694.22	217.75	-42.12	-217.42	1.86	-1.81	-2.84
1,807.00	7.50	347.36	1,786.37	229.91	-45.17	-229.57	0.68	-0.55	3.03
1,900.00	7.63	347.87	1,878.56	241.87	-47.80	-241.51	0.16	0.14	0.55
1,993.00	8.75	356.56	1,970.62	254.97	-49.52	-254.59	1.79	1.20	9.34
2,042.00	8.94	355.77	2,019.03	262.49	-50.02	-262.10	0.46	0.39	-1.61
2,124.00	8.38	354.28	2,100.10	274.79	-51.09	-274.40	0.74	-0.68	-1.82
2,218.00	12.21	359.37	2,192.57	291.55	-51.88	-291.15	4.18	4.07	5.41
2,313.00	11.36	359.16	2,285.57	310.95	-52.13	-310.55	0.90	-0.89	-0.22
2,408.00	10.67	358.93	2,378.82	329.10	-52.43	-328.70	0.73	-0.73	-0.24
2,503.00	12.86	2.37	2,471.82	348.46	-52.16	-348.06	2.42	2.31	3.62
2,597.00	12.71	359.81	2,563.49	369.25	-51.76	-368.85	0.62	-0.16	-2.72
2,692.00	11.83	0.85	2,656.32	389.44	-51.65	-389.04	0.96	-0.93	1.09
2,787.00	11.80	356.63	2,749.30	408.87	-52.08	-408.47	0.91	-0.03	-4.44
2,881.00	11.08	358.28	2,841.44	427.49	-52.91	-427.09	0.84	-0.77	1.76
2,976.00	9.16	355.36	2,934.95	444.16	-53.80	-443.74	2.09	-2.02	-3.07
3,071.00	9.69	353.11	3,028.67	459.63	-55.37	-459.20	0.68	0.56	-2.37
3,166.00	11.77	348.91	3,122.01	477.08	-58.19	-476.63	2.34	2.19	-4.42
3,261.00	11.45	346.51	3,215.06	495.76	-62.26	-495.28	0.61	-0.34	-2.53
3,355.00	13.59	350.68	3,306.83	515.73	-66.22	-515.22	2.47	2.28	4.44
3,450.00	14.22	351.47	3,399.04	538.28	-69.76	-537.75	0.69	0.66	0.83
3,544.00	14.53	349.94	3,490.10	561.31	-73.53	-560.74	0.52	0.33	-1.63
3,639.00	13.65	347.66	3,582.24	584.00	-78.01	-583.40	1.10	-0.93	-2.40
3,734.00	12.63	347.44	3,674.75	605.09	-82.66	-604.45	1.07	-1.07	-0.23
3,828.00	11.28	347.55	3,766.71	624.10	-86.88	-623.43	1.44	-1.44	0.12
3,923.00	10.21	346.46	3,860.04	641.35	-90.85	-640.65	1.15	-1.13	-1.15
4,017.00	9.38	344.07	3,952.67	656.82	-94.91	-656.09	0.98	-0.88	-2.54
4,112.00	10.45	344.62	4,046.25	672.57	-99.32	-671.81	1.13	1.13	0.58
4,207.00	9.50	343.01	4,139.82	688.38	-103.89	-687.58	1.04	-1.00	-1.69
4,302.00	9.49	345.61	4,233.51	703.46	-108.13	-702.63	0.45	-0.01	2.74
4,396.00	7.99	341.37	4,326.42	717.16	-112.14	-716.30	1.74	-1.60	-4.51
4,491.00	7.77	351.34	4,420.53	729.76	-115.22	-728.88	1.46	-0.23	10.49
4,585.00	8.74	352.77	4,513.55	743.13	-117.08	-742.23	1.05	1.03	1.52
4,680.00	7.23	351.47	4,607.63	756.20	-118.87	-755.29	1.60	-1.59	-1.37
4,775.00	5.24	349.73	4,702.06	766.38	-120.53	-765.46	2.10	-2.09	-1.83
4,869.00	2.65	357.03	4,795.83	772.78	-121.41	-771.85	2.80	-2.76	7.77

Precision Drilling Corporation

Survey Report

Company:	WHITING PETROLEUM CORP.	Local Co-ordinate Reference:	Well Razor Federal #261-3546
Project:	Weld County, CO	TVD Reference:	4711'GL+21'KB @ 4732.00usft (Unit 406)
Site:	Sec 26-T10N-R58W	MD Reference:	4711'GL+21'KB @ 4732.00usft (Unit 406)
Well:	Razor Federal #261-3546	North Reference:	True
Wellbore:	Original Hole	Survey Calculation Method:	Minimum Curvature
Design:	Original Hole	Database:	Local Database

Survey

Measured Depth (usft)	Inclination (°)	Azimuth (°)	Vertical Depth (usft)	+N/-S (usft)	+E/-W (usft)	Vertical Section (usft)	Dogleg Rate (°/100usft)	Build Rate (°/100usft)	Turn Rate (°/100usft)
4,964.00	0.45	7.52	4,890.79	775.34	-121.47	-774.41	2.33	-2.32	11.04
5,092.00	0.77	30.91	5,018.79	776.58	-120.97	-775.65	0.31	0.25	18.27
5,187.00	6.64	178.35	5,113.59	771.63	-120.48	-770.70	7.68	6.18	155.20
5,281.00	12.47	189.43	5,206.25	756.17	-121.99	-755.23	6.48	6.20	11.79
5,376.00	16.55	188.12	5,298.20	732.65	-125.58	-731.69	4.31	4.29	-1.38
5,471.00	24.57	191.72	5,387.08	699.86	-131.51	-698.85	8.54	8.44	3.79
5,565.00	40.74	189.44	5,465.97	650.13	-140.57	-649.06	17.25	17.20	-2.43
5,660.00	52.46	182.05	5,531.17	581.63	-147.03	-580.51	13.55	12.34	-7.78
5,754.00	53.27	174.40	5,587.97	506.82	-144.69	-505.72	6.54	0.86	-8.14
5,849.00	57.57	173.64	5,641.88	429.05	-136.53	-428.01	4.57	4.53	-0.80
5,944.00	65.12	175.59	5,687.41	346.11	-128.76	-345.14	8.15	7.95	2.05
6,038.00	68.63	176.86	5,724.32	259.87	-123.08	-258.94	3.94	3.73	1.35
6,133.00	79.50	179.61	5,750.37	168.71	-120.33	-167.80	11.77	11.44	2.89
6,157.00	81.78	179.82	5,754.27	145.03	-120.22	-144.12	9.56	9.52	0.90
100' ML Entry									
6,227.00	88.45	180.44	5,760.22	75.32	-120.38	-74.42	9.56	9.52	0.88
7" Casing Point									
6,322.00	89.94	179.29	5,761.56	-19.66	-120.16	20.56	1.98	1.57	-1.21
6,416.00	89.02	178.02	5,762.41	-113.63	-117.95	114.51	1.67	-0.98	-1.35
6,511.00	89.63	177.87	5,763.53	-208.56	-114.54	209.41	0.66	0.64	-0.16
6,606.00	89.46	177.64	5,764.28	-303.48	-110.82	304.31	0.30	-0.18	-0.24
6,701.00	89.51	177.79	5,765.14	-398.41	-107.04	399.20	0.17	0.05	0.16
6,796.00	91.59	179.47	5,764.23	-493.37	-104.76	494.14	2.81	2.19	1.77
6,890.00	92.36	179.90	5,760.99	-587.31	-104.25	588.07	0.94	0.82	0.46
6,985.00	90.82	179.48	5,758.35	-682.27	-103.73	683.03	1.68	-1.62	-0.44
7,080.00	90.10	179.68	5,757.59	-777.26	-103.04	778.01	0.79	-0.76	0.21
7,174.00	90.65	180.11	5,756.97	-871.26	-102.86	872.00	0.74	0.59	0.46
7,268.00	89.55	179.95	5,756.81	-965.26	-102.91	966.00	1.18	-1.17	-0.17
7,363.00	89.45	178.95	5,757.64	-1,060.25	-102.00	1,060.98	1.06	-0.11	-1.05
7,458.00	89.69	178.53	5,758.35	-1,155.22	-99.91	1,155.94	0.51	0.25	-0.44
7,552.00	90.07	178.24	5,758.55	-1,249.18	-97.26	1,249.88	0.51	0.40	-0.31
7,647.00	89.95	177.10	5,758.53	-1,344.10	-93.40	1,344.77	1.21	-0.13	-1.20
7,742.00	89.87	178.41	5,758.68	-1,439.03	-89.68	1,439.66	1.38	-0.08	1.38
7,836.00	89.60	180.42	5,759.12	-1,533.02	-88.72	1,533.64	2.16	-0.29	2.14
7,931.00	89.85	179.44	5,759.57	-1,628.01	-88.60	1,628.63	1.06	0.26	-1.03
8,026.00	89.55	178.95	5,760.07	-1,723.00	-87.27	1,723.61	0.60	-0.32	-0.52
8,121.00	89.72	177.93	5,760.67	-1,817.96	-84.68	1,818.55	1.09	0.18	-1.07
8,215.00	89.30	181.52	5,761.48	-1,911.94	-84.23	1,912.52	3.85	-0.45	3.82
8,310.00	88.88	181.10	5,762.99	-2,006.91	-86.40	2,007.50	0.63	-0.44	-0.44
8,405.00	88.53	180.62	5,765.13	-2,101.87	-87.83	2,102.47	0.63	-0.37	-0.51
8,499.00	89.92	180.91	5,766.41	-2,195.85	-89.08	2,196.46	1.51	1.48	0.31
8,594.00	89.42	179.18	5,766.95	-2,290.85	-89.16	2,291.45	1.90	-0.53	-1.82
8,689.00	90.37	180.53	5,767.13	-2,385.84	-88.92	2,386.44	1.74	1.00	1.42
8,783.00	91.78	182.05	5,765.36	-2,479.80	-91.03	2,480.41	2.21	1.50	1.62

Precision Drilling Corporation

Survey Report

Company:	WHITING PETROLEUM CORP.	Local Co-ordinate Reference:	Well Razor Federal #261-3546
Project:	Weld County, CO	TVD Reference:	4711'GL+21'KB @ 4732.00usft (Unit 406)
Site:	Sec 26-T10N-R58W	MD Reference:	4711'GL+21'KB @ 4732.00usft (Unit 406)
Well:	Razor Federal #261-3546	North Reference:	True
Wellbore:	Original Hole	Survey Calculation Method:	Minimum Curvature
Design:	Original Hole	Database:	Local Database

Survey

Measured Depth (usft)	Inclination (°)	Azimuth (°)	Vertical Depth (usft)	+N/-S (usft)	+E/-W (usft)	Vertical Section (usft)	Dogleg Rate (°/100usft)	Build Rate (°/100usft)	Turn Rate (°/100usft)
8,878.00	91.79	181.69	5,762.40	-2,574.70	-94.13	2,575.33	0.38	0.01	-0.38
8,971.00	91.99	182.17	5,759.34	-2,667.60	-97.26	2,668.25	0.56	0.22	0.52
9,064.00	89.80	180.29	5,757.88	-2,760.55	-99.26	2,761.22	3.10	-2.35	-2.02
9,157.00	89.00	179.55	5,758.86	-2,853.55	-99.13	2,854.21	1.17	-0.86	-0.80
9,249.00	88.59	179.60	5,760.79	-2,945.52	-98.45	2,946.18	0.45	-0.45	0.05
9,342.00	89.39	181.02	5,762.43	-3,038.51	-98.95	3,039.16	1.75	0.86	1.53
9,436.00	88.96	181.27	5,763.79	-3,132.48	-100.83	3,133.15	0.53	-0.46	0.27
9,529.00	88.29	181.77	5,766.02	-3,225.42	-103.29	3,226.10	0.90	-0.72	0.54
9,622.00	90.69	181.37	5,766.85	-3,318.37	-105.84	3,319.07	2.62	2.58	-0.43
9,715.00	91.63	178.35	5,764.96	-3,411.34	-105.62	3,412.04	3.40	1.01	-3.25
9,808.00	91.82	178.29	5,762.16	-3,504.26	-102.89	3,504.93	0.21	0.20	-0.06
9,902.00	91.59	177.61	5,759.37	-3,598.16	-99.53	3,598.80	0.76	-0.24	-0.72
9,995.00	91.11	177.16	5,757.17	-3,691.03	-95.29	3,691.64	0.71	-0.52	-0.48
10,087.00	90.88	176.59	5,755.58	-3,782.88	-90.27	3,783.45	0.67	-0.25	-0.62
10,178.00	90.75	176.06	5,754.28	-3,873.68	-84.44	3,874.21	0.60	-0.14	-0.58
10,271.00	89.83	178.14	5,753.81	-3,966.56	-79.74	3,967.05	2.45	-0.99	2.24
10,365.00	89.40	178.35	5,754.44	-4,060.51	-76.86	4,060.97	0.51	-0.46	0.22
10,458.00	88.63	177.40	5,756.04	-4,153.43	-73.41	4,153.87	1.31	-0.83	-1.02
10,551.00	89.81	179.93	5,757.31	-4,246.39	-71.24	4,246.80	3.00	1.27	2.72
10,644.00	90.93	181.76	5,756.71	-4,339.37	-72.61	4,339.79	2.31	1.20	1.97
10,737.00	90.95	181.06	5,755.18	-4,432.33	-74.90	4,432.77	0.75	0.02	-0.75
10,830.00	90.33	180.99	5,754.14	-4,525.31	-76.57	4,525.76	0.67	-0.67	-0.08
10,923.00	91.46	181.81	5,752.69	-4,618.27	-78.84	4,618.73	1.50	1.22	0.88
11,016.00	90.86	182.04	5,750.81	-4,711.20	-81.96	4,711.68	0.69	-0.65	0.25
11,109.00	91.26	182.56	5,749.09	-4,804.10	-85.69	4,804.61	0.71	0.43	0.56
11,201.00	90.89	180.83	5,747.36	-4,896.04	-88.41	4,896.57	1.92	-0.40	-1.88
11,294.00	90.63	180.56	5,746.13	-4,989.03	-89.54	4,989.56	0.40	-0.28	-0.29
11,388.00	92.35	178.80	5,743.68	-5,082.99	-89.02	5,083.51	2.62	1.83	-1.87
11,481.00	89.70	178.08	5,742.02	-5,175.93	-86.49	5,176.43	2.95	-2.85	-0.77
11,574.00	88.94	177.42	5,743.12	-5,268.85	-82.83	5,269.32	1.08	-0.82	-0.71
11,669.00	90.28	178.80	5,743.77	-5,363.79	-79.70	5,364.24	2.02	1.41	1.45
11,763.00	89.86	177.82	5,743.66	-5,457.75	-76.93	5,458.17	1.13	-0.45	-1.04
11,858.00	90.78	179.44	5,743.12	-5,552.72	-74.66	5,553.12	1.96	0.97	1.71
11,953.00	90.17	177.88	5,742.34	-5,647.69	-72.44	5,648.07	1.76	-0.64	-1.64
12,048.00	91.38	179.07	5,741.05	-5,742.64	-69.91	5,743.00	1.79	1.27	1.25
12,142.00	91.38	178.84	5,738.79	-5,836.60	-68.20	5,836.94	0.24	0.00	-0.24
12,237.00	91.05	178.48	5,736.77	-5,931.55	-65.97	5,931.88	0.51	-0.35	-0.38
12,332.00	90.68	178.07	5,735.34	-6,026.49	-63.11	6,026.80	0.58	-0.39	-0.43
12,426.00	89.66	177.88	5,735.06	-6,120.43	-59.79	6,120.71	1.10	-1.09	-0.20
12,521.00	88.43	179.21	5,736.64	-6,215.39	-57.38	6,215.64	1.91	-1.29	1.40
12,616.00	90.16	180.96	5,737.81	-6,310.37	-57.52	6,310.63	2.59	1.82	1.84
12,710.00	90.20	179.98	5,737.52	-6,404.37	-58.29	6,404.62	1.04	0.04	-1.04
12,805.00	89.84	179.32	5,737.48	-6,499.36	-57.71	6,499.61	0.79	-0.38	-0.69

Precision Drilling Corporation

Survey Report

Company:	WHITING PETROLEUM CORP.	Local Co-ordinate Reference:	Well Razor Federal #26I-3546
Project:	Weld County, CO	TVD Reference:	4711'GL+21'KB @ 4732.00usft (Unit 406)
Site:	Sec 26-T10N-R58W	MD Reference:	4711'GL+21'KB @ 4732.00usft (Unit 406)
Well:	Razor Federal #26I-3546	North Reference:	True
Wellbore:	Original Hole	Survey Calculation Method:	Minimum Curvature
Design:	Original Hole	Database:	Local Database

Survey									
Measured Depth (usft)	Inclination (°)	Azimuth (°)	Vertical Depth (usft)	+N/-S (usft)	+E/-W (usft)	Vertical Section (usft)	Dogleg Rate (°/100usft)	Build Rate (°/100usft)	Turn Rate (°/100usft)
12,900.00	90.83	179.61	5,736.93	-6,594.36	-56.83	6,594.60	1.09	1.04	0.31
12,995.00	89.54	179.07	5,736.62	-6,689.35	-55.73	6,689.58	1.47	-1.36	-0.57
13,089.00	90.37	185.43	5,736.70	-6,783.23	-59.42	6,783.48	6.82	0.88	6.77
13,184.00	91.44	181.64	5,735.20	-6,878.02	-65.28	6,878.31	4.14	1.13	-3.99
13,279.00	91.53	180.34	5,732.73	-6,972.97	-66.92	6,973.27	1.37	0.09	-1.37
13,351.00	91.33	179.40	5,730.94	-7,044.94	-66.75	7,045.25	1.33	-0.28	-1.31
13,410.00	91.33	179.40	5,729.57	-7,103.92	-66.14	7,104.22	0.00	0.00	0.00

Design Targets									
Target Name	Dip Angle (°)	Dip Dir. (°)	TVD (usft)	+N/-S (usft)	+E/-W (usft)	Northing (usft)	Easting (usft)	Latitude	Longitude
Surface #26I-3546 - hit/miss target - Shape - Point	0.00	0.00	0.00	0.00	0.00	1,541,940.58	3,463,535.85	40.808995°N	103.825459°W
BHL #26I-3546 - actual wellpath hits target center - Point	0.00	0.00	5,729.57	-7,103.92	-66.14	1,534,836.68	3,463,603.87	40.789496°N	103.825697°W
100' ML Entry #26I-3546 - actual wellpath hits target center - Point	0.00	0.00	5,754.27	145.03	-120.22	1,542,083.32	3,463,412.91	40.809393°N	103.825893°W
7" Casing Point #26I-3546 - actual wellpath hits target center - Point	0.00	0.00	5,760.22	75.32	-120.38	1,542,013.62	3,463,414.07	40.809201°N	103.825893°W
PBHL #26I-3546 p2 - actual wellpath misses target center by 47.21usft at 13410.00usft MD (5729.57 TVD, -7103.92 N, -66.14 E) - Point	0.00	0.00	5,762.00	-7,135.95	-53.84	1,534,804.89	3,463,616.76	40.789408°N	103.825653°W

Design Annotations				
Measured Depth (usft)	Vertical Depth (usft)	+N/-S (usft)	+E/-W (usft)	Comment
6,157.00	5,754.27	145.03	-120.22	100' ML Entry
6,227.00	5,760.22	75.32	-120.38	7" Casing Point