



WHITING PETROLEUM CORP.

Project: Weld County, CO
Site: Sec 26-T10N-R58W
Well: Razor #26I-2346
Wellbore: Original Hole
Design: Original Hole

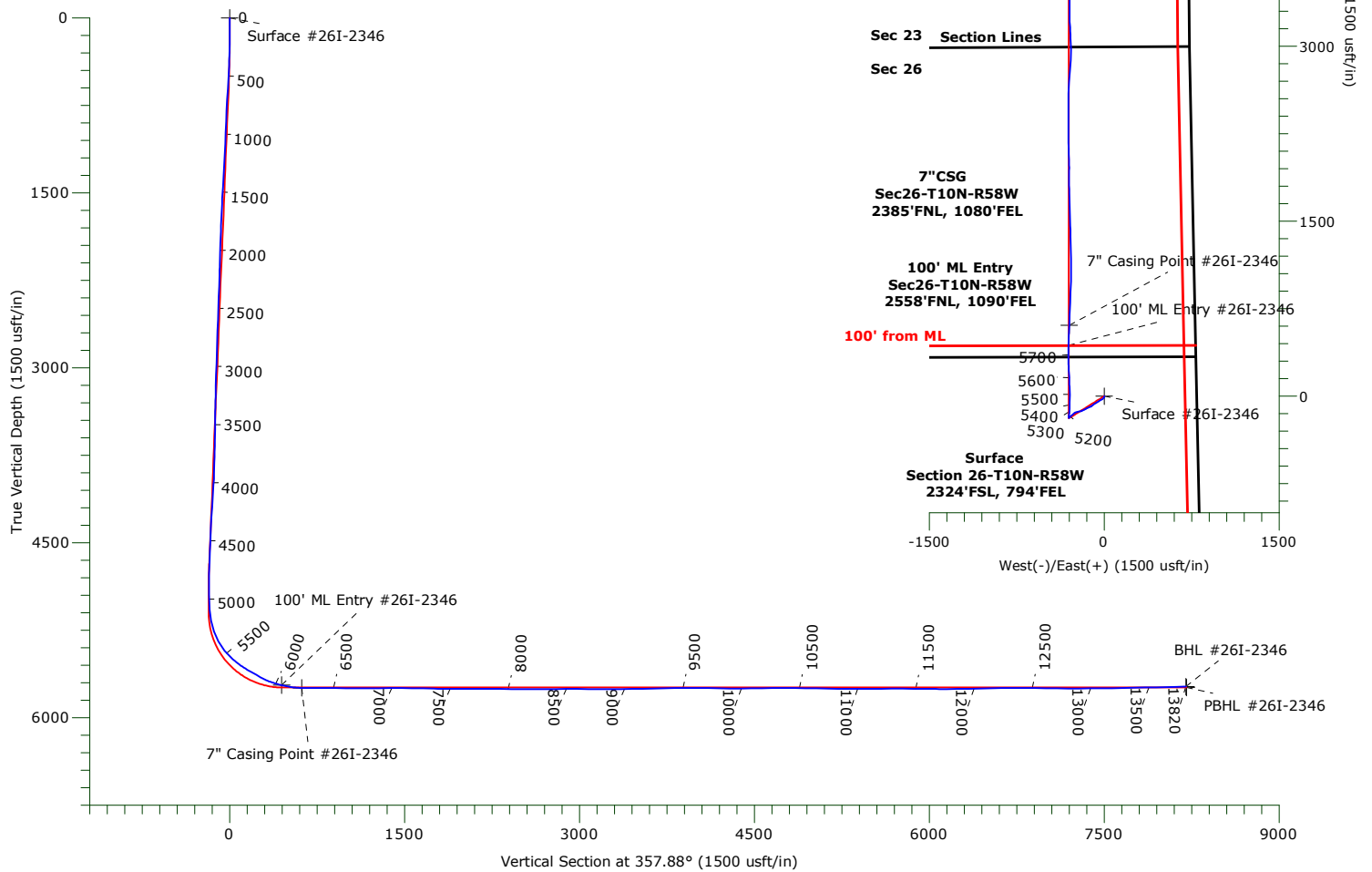


TVD		MD		ANNOTATIONS					
				+N/-S	+E/-W			Annotation	
5722.07		6051.00		434.57	-305.40			100' ML Entry	
5745.35		6227.00		608.49	-299.16			7" Casing Point	

LEGEND

- ▣ Razor #26I-2346, Original Hole, Plan #1 V0
- Original Hole

MWD CORRECTION
WILL BE PROVIDED BY MAGVAR



WELLBORE TARGET DETAILS

Name	TVD	+N/-S	+E/-W	Northing	Easting	Latitude	Longitude	Shape
Surface #26I-2346	0.00	0.00	0.00	1541850.52	3463537.56	40.808747°N	103.825458°W	Point
100' ML Entry #26I-2346	5722.07	434.57	-305.40	1542279.24	3463224.01	40.809940°N	103.826562°W	Point
BHL #26I-2346	5735.24	8197.17	-314.95	1550040.28	3463067.88	40.831246°N	103.826596°W	Point
PBHL #26I-2346	5743.00	8199.69	-302.87	1550043.03	3463079.91	40.831253°N	103.826553°W	Point
7" Casing Point #26I-2346	5745.35	608.49	-299.16	1542453.25	3463226.96	40.810417°N	103.826539°W	Point

Precision Drilling Corporation

Survey Report

Company:	WHITING PETROLEUM CORP.	Local Co-ordinate Reference:	Well Razor #26I-2346
Project:	Weld County, CO	TVD Reference:	4711'GL+21'KB @ 4732.00usft (Unit 406)
Site:	Sec 26-T10N-R58W	MD Reference:	4711'GL+21'KB @ 4732.00usft (Unit 406)
Well:	Razor #26I-2346	North Reference:	True
Wellbore:	Original Hole	Survey Calculation Method:	Minimum Curvature
Design:	Original Hole	Database:	Local Database

Project	Weld County, CO		
Map System:	US State Plane 1983	System Datum:	Mean Sea Level
Geo Datum:	North American Datum 1983		
Map Zone:	Colorado Northern Zone		

Site		Sec 26-T10N-R58W			
Site Position:		Northing:	1,541,850.52 usft	Latitude:	40.808747°N
From:	Map	Easting:	3,463,537.56 usft	Longitude:	103.825459°W
Position Uncertainty:	0.00 usft	Slot Radius:	13.20 in	Grid Convergence:	1.08 °

Well		Razor #26I-2346				
Well Position	+N-S	0.00 usft	Northing:	1,541,850.52 usft	Latitude:	40.808747°N
	+E-W	0.00 usft	Easting:	3,463,537.56 usft	Longitude:	103.825459°W
Position Uncertainty		0.00 usft	Wellhead Elevation:	0.00 usft	Ground Level:	4,711.00 usft

Wellbore	Original Hole				
Magnetics	Model Name	Sample Date	Declination (°)	Dip Angle (°)	Field Strength (nT)
	IGRF2015	05/11/17	7.74	67.32	52,711

Design	Original Hole				
Audit Notes:					
Version:	1.0	Phase:	ACTUAL	Tie On Depth:	0.00
Vertical Section:	Depth From (TVD) (usft)	+N/-S (usft)	+E/-W (usft)	Direction (°)	
	0.00	0.00	0.00	357.88	

Survey Program	Date	05/26/17			
From (usft)	To (usft)	Survey (Wellbore)	Tool Name	Description	
134.00	13,758.00	Survey #1 (Original Hole)	MWD+IFR1+MS+sag	Fixed:v2:crustal dec & 3-axis correction + sag OWSG BLIND	
13,820.00	13,820.00	Survey #2 (Original Hole)	BLIND		

Survey										
Measured Depth (usft)	Inclination (°)	Azimuth (°)	Vertical Depth (usft)	+N/-S (usft)	+E/-W (usft)	Vertical Section (usft)	Dogleg Rate (°/100usft)	Build Rate (°/100usft)	Turn Rate (°/100usft)	
0.00	0.00	0.00	0.00	0.00	0.00	0.00	0.00	0.00	0.00	
134.00	0.57	66.78	134.00	0.26	0.61	0.24	0.43	0.43	0.00	
228.00	0.86	82.07	227.99	0.54	1.74	0.48	0.37	0.31	16.27	
323.00	1.28	170.51	322.98	-0.40	2.62	-0.50	1.60	0.44	93.09	
418.00	2.62	182.41	417.92	-3.62	2.71	-3.72	1.47	1.41	12.53	
513.00	3.48	206.81	512.79	-8.36	1.31	-8.41	1.62	0.91	25.68	
607.00	5.10	217.19	606.53	-14.24	-2.50	-14.14	1.90	1.72	11.04	
702.00	5.26	229.76	701.14	-20.41	-8.38	-20.09	1.20	0.17	13.23	
797.00	5.44	239.82	795.73	-25.49	-15.59	-24.90	1.00	0.19	10.59	
891.00	5.32	241.00	889.31	-29.84	-23.26	-28.96	0.17	-0.13	1.26	

Precision Drilling Corporation

Survey Report

Company:	WHITING PETROLEUM CORP.	Local Co-ordinate Reference:	Well Razor #26I-2346
Project:	Weld County, CO	TVD Reference:	4711'GL+21'KB @ 4732.00usft (Unit 406)
Site:	Sec 26-T10N-R58W	MD Reference:	4711'GL+21'KB @ 4732.00usft (Unit 406)
Well:	Razor #26I-2346	North Reference:	True
Wellbore:	Original Hole	Survey Calculation Method:	Minimum Curvature
Design:	Original Hole	Database:	Local Database

Survey

Measured Depth (usft)	Inclination (°)	Azimuth (°)	Vertical Depth (usft)	+N/-S (usft)	+E/-W (usft)	Vertical Section (usft)	Dogleg Rate (°/100usft)	Build Rate (°/100usft)	Turn Rate (°/100usft)
986.00	5.10	239.87	983.92	-34.10	-30.76	-32.94	0.26	-0.23	-1.19
1,081.00	5.34	239.05	1,078.53	-38.49	-38.20	-37.05	0.26	0.25	-0.86
1,175.00	5.74	238.51	1,172.09	-43.20	-45.96	-41.47	0.43	0.43	-0.57
1,270.00	5.89	237.75	1,266.60	-48.28	-54.14	-46.24	0.18	0.16	-0.80
1,364.00	6.35	238.30	1,360.06	-53.59	-62.64	-51.23	0.49	0.49	0.59
1,459.00	6.52	239.51	1,454.47	-59.08	-71.76	-56.39	0.23	0.18	1.27
1,554.00	6.08	236.62	1,548.89	-64.59	-80.60	-61.56	0.57	-0.46	-3.04
1,649.00	5.02	236.54	1,643.45	-69.65	-88.27	-66.33	1.12	-1.12	-0.08
1,743.00	4.24	232.14	1,737.14	-74.05	-94.45	-70.50	0.91	-0.83	-4.68
1,838.00	3.14	231.57	1,831.94	-77.82	-99.26	-74.09	1.16	-1.16	-0.60
1,933.00	3.20	230.09	1,926.79	-81.14	-103.33	-77.26	0.11	0.06	-1.56
2,022.00	3.14	233.68	2,015.66	-84.18	-107.20	-80.15	0.23	-0.07	4.03
2,123.00	2.78	228.64	2,116.52	-87.43	-111.27	-83.26	0.44	-0.36	-4.99
2,218.00	5.71	250.96	2,211.26	-90.50	-117.47	-86.09	3.48	3.08	23.49
2,312.00	5.41	251.12	2,304.82	-93.46	-126.08	-88.73	0.32	-0.32	0.17
2,407.00	5.41	246.33	2,399.39	-96.70	-134.42	-91.67	0.48	0.00	-5.04
2,502.00	5.41	246.35	2,493.97	-100.30	-142.62	-94.95	0.00	0.00	0.02
2,597.00	5.11	240.31	2,588.57	-104.19	-150.40	-98.56	0.66	-0.32	-6.36
2,691.00	4.69	241.43	2,682.23	-108.10	-157.41	-102.20	0.46	-0.45	1.19
2,786.00	4.86	238.93	2,776.90	-112.04	-164.27	-105.88	0.28	0.18	-2.63
2,881.00	4.31	242.92	2,871.59	-115.74	-170.89	-109.34	0.67	-0.58	4.20
2,975.00	4.26	241.31	2,965.33	-119.02	-177.10	-112.39	0.14	-0.05	-1.71
3,071.00	3.56	243.26	3,061.11	-122.07	-182.89	-115.23	0.74	-0.73	2.03
3,165.00	3.03	242.40	3,154.95	-124.54	-187.70	-117.51	0.57	-0.56	-0.91
3,260.00	2.94	235.54	3,249.82	-127.08	-191.93	-119.89	0.39	-0.09	-7.22
3,354.00	4.82	265.48	3,343.61	-128.76	-197.86	-121.35	2.88	2.00	31.85
3,449.00	7.07	261.48	3,438.09	-129.94	-207.62	-122.17	2.41	2.37	-4.21
3,544.00	6.62	259.84	3,532.42	-131.77	-218.79	-123.59	0.52	-0.47	-1.73
3,639.00	6.25	254.11	3,626.82	-134.15	-229.16	-125.58	0.78	-0.39	-6.03
3,733.00	5.05	254.12	3,720.36	-136.68	-238.06	-127.78	1.28	-1.28	0.01
3,827.00	3.54	251.58	3,814.09	-138.73	-244.79	-129.58	1.62	-1.61	-2.70
3,922.00	4.28	230.78	3,908.88	-141.90	-250.32	-132.54	1.67	0.78	-21.89
4,017.00	5.87	232.48	4,003.50	-147.10	-256.92	-137.50	1.68	1.67	1.79
4,111.00	5.96	228.62	4,097.00	-153.26	-264.39	-143.37	0.43	0.10	-4.11
4,206.00	5.39	229.23	4,191.54	-159.43	-271.47	-149.28	0.60	-0.60	0.64
4,301.00	4.87	230.54	4,286.16	-164.91	-277.97	-154.51	0.56	-0.55	1.38
4,395.00	4.60	228.53	4,379.83	-169.94	-283.87	-159.32	0.34	-0.29	-2.14
4,490.00	4.29	236.54	4,474.55	-174.42	-289.69	-163.58	0.73	-0.33	8.43
4,585.00	3.52	220.47	4,569.33	-178.60	-294.55	-167.58	1.40	-0.81	-16.92
4,679.00	2.68	218.30	4,663.19	-182.52	-297.78	-171.38	0.90	-0.89	-2.31
4,774.00	2.28	217.16	4,758.10	-185.77	-300.30	-174.53	0.42	-0.42	-1.20
4,869.00	0.72	257.24	4,853.07	-187.41	-302.03	-176.10	1.88	-1.64	42.19
4,963.00	0.57	272.25	4,947.06	-187.52	-303.07	-176.18	0.24	-0.16	15.97

Precision Drilling Corporation

Survey Report

Company:	WHITING PETROLEUM CORP.	Local Co-ordinate Reference:	Well Razor #26I-2346
Project:	Weld County, CO	TVD Reference:	4711'GL+21'KB @ 4732.00usft (Unit 406)
Site:	Sec 26-T10N-R58W	MD Reference:	4711'GL+21'KB @ 4732.00usft (Unit 406)
Well:	Razor #26I-2346	North Reference:	True
Wellbore:	Original Hole	Survey Calculation Method:	Minimum Curvature
Design:	Original Hole	Database:	Local Database

Survey

Measured Depth (usft)	Inclination (°)	Azimuth (°)	Vertical Depth (usft)	+N/S (usft)	+E/W (usft)	Vertical Section (usft)	Dogleg Rate (°/100usft)	Build Rate (°/100usft)	Turn Rate (°/100usft)
5,092.00	4.21	358.26	5,075.94	-182.76	-303.85	-171.39	3.26	2.82	66.67
5,187.00	11.32	6.55	5,170.02	-169.99	-302.89	-158.67	7.56	7.48	8.73
5,282.00	19.20	6.89	5,261.59	-145.18	-299.95	-133.99	8.30	8.29	0.36
5,376.00	29.44	3.42	5,347.14	-106.67	-296.71	-95.62	10.99	10.89	-3.69
5,471.00	38.27	2.55	5,425.96	-53.87	-294.00	-42.96	9.31	9.29	-0.92
5,565.00	47.90	358.11	5,494.54	10.23	-293.86	21.09	10.74	10.24	-4.72
5,660.00	55.38	357.26	5,553.46	84.61	-296.89	95.53	7.90	7.87	-0.89
5,755.00	60.89	358.50	5,603.60	165.20	-299.85	176.18	5.90	5.80	1.31
5,850.00	59.55	356.60	5,650.78	247.57	-303.37	258.63	2.24	-1.41	-2.00
5,944.00	69.47	358.49	5,691.19	332.24	-306.94	343.36	10.71	10.55	2.01
6,038.00	76.08	2.67	5,719.02	421.94	-305.97	432.97	8.21	7.03	4.45
6,051.00	76.74	2.52	5,722.07	434.57	-305.40	445.57	5.23	5.10	-1.15
100' ML Entry									
6,133.00	80.93	1.59	5,737.95	514.94	-302.52	525.78	5.23	5.11	-1.13
6,227.00	90.02	2.52	5,745.35	608.49	-299.16	619.14	9.72	9.67	0.99
7" Casing Point									
6,322.00	89.69	2.20	5,745.59	703.41	-295.25	713.85	0.48	-0.35	-0.34
6,417.00	89.32	2.43	5,746.41	798.33	-291.41	808.56	0.46	-0.39	0.24
6,512.00	89.12	3.00	5,747.71	893.21	-286.91	903.21	0.64	-0.21	0.60
6,606.00	89.50	0.14	5,748.84	987.16	-284.34	997.00	3.07	0.40	-3.04
6,701.00	89.31	0.58	5,749.83	1,082.15	-283.74	1,091.91	0.50	-0.20	0.46
6,796.00	90.43	358.92	5,750.04	1,177.15	-284.15	1,186.85	2.11	1.18	-1.75
6,891.00	90.96	358.90	5,748.89	1,272.12	-285.96	1,281.83	0.56	0.56	-0.02
6,985.00	90.95	359.22	5,747.32	1,366.10	-287.50	1,375.80	0.34	-0.01	0.34
7,080.00	89.28	357.86	5,747.13	1,461.06	-289.92	1,470.78	2.27	-1.76	-1.43
7,175.00	89.37	358.35	5,748.25	1,556.00	-293.06	1,565.78	0.52	0.09	0.52
7,269.00	88.77	357.78	5,749.78	1,649.93	-296.24	1,659.76	0.88	-0.64	-0.61
7,364.00	88.03	358.59	5,752.43	1,744.85	-299.25	1,754.72	1.15	-0.78	0.85
7,459.00	90.11	359.88	5,753.97	1,839.82	-300.51	1,849.68	2.58	2.19	1.36
7,553.00	90.16	0.73	5,753.75	1,933.82	-300.01	1,943.59	0.91	0.05	0.90
7,648.00	88.99	357.53	5,754.46	2,028.79	-301.45	2,038.55	3.59	-1.23	-3.37
7,743.00	90.04	358.94	5,755.26	2,123.74	-304.38	2,133.54	1.85	1.11	1.48
7,837.00	89.95	0.28	5,755.27	2,217.73	-305.02	2,227.50	1.43	-0.10	1.43
7,932.00	89.84	359.78	5,755.44	2,312.73	-304.97	2,322.43	0.54	-0.12	-0.53
8,027.00	89.56	0.62	5,755.94	2,407.73	-304.64	2,417.35	0.93	-0.29	0.88
8,122.00	89.09	359.16	5,757.06	2,502.72	-304.82	2,512.28	1.61	-0.49	-1.54
8,216.00	90.38	1.19	5,757.49	2,596.71	-304.53	2,606.20	2.56	1.37	2.16
8,311.00	90.66	3.44	5,756.63	2,691.62	-300.70	2,700.91	2.39	0.29	2.37
8,406.00	90.43	6.10	5,755.73	2,786.28	-292.80	2,795.21	2.81	-0.24	2.80
8,500.00	90.98	3.01	5,754.57	2,879.97	-285.33	2,888.55	3.34	0.59	-3.29
8,595.00	89.15	358.37	5,754.46	2,974.93	-284.19	2,983.41	5.25	-1.93	-4.88
8,689.00	88.62	358.22	5,756.29	3,068.87	-286.99	3,077.39	0.59	-0.56	-0.16
8,784.00	89.67	356.08	5,757.71	3,163.74	-291.71	3,172.36	2.51	1.11	-2.25
8,877.00	89.98	359.64	5,757.99	3,256.66	-295.18	3,265.35	3.84	0.33	3.83

Precision Drilling Corporation

Survey Report

Company:	WHITING PETROLEUM CORP.	Local Co-ordinate Reference:	Well Razor #26I-2346
Project:	Weld County, CO	TVD Reference:	4711'GL+21'KB @ 4732.00usft (Unit 406)
Site:	Sec 26-T10N-R58W	MD Reference:	4711'GL+21'KB @ 4732.00usft (Unit 406)
Well:	Razor #26I-2346	North Reference:	True
Wellbore:	Original Hole	Survey Calculation Method:	Minimum Curvature
Design:	Original Hole	Database:	Local Database

Survey

Measured Depth (usft)	Inclination (°)	Azimuth (°)	Vertical Depth (usft)	+N/-S (usft)	+E/-W (usft)	Vertical Section (usft)	Dogleg Rate (°/100usft)	Build Rate (°/100usft)	Turn Rate (°/100usft)
8,970.00	91.14	0.09	5,757.08	3,349.65	-295.40	3,358.28	1.34	1.25	0.48
9,063.00	91.22	359.42	5,755.17	3,442.63	-295.80	3,451.21	0.73	0.09	-0.72
9,155.00	91.21	358.82	5,753.22	3,534.60	-297.21	3,543.17	0.65	-0.01	-0.65
9,248.00	91.30	358.43	5,751.18	3,627.55	-299.44	3,636.14	0.43	0.10	-0.42
9,342.00	91.46	358.53	5,748.92	3,721.49	-301.94	3,730.11	0.20	0.17	0.11
9,435.00	91.97	357.53	5,746.13	3,814.39	-305.13	3,823.06	1.21	0.55	-1.08
9,528.00	88.94	358.31	5,745.40	3,907.31	-308.51	3,916.05	3.36	-3.26	0.84
9,621.00	89.38	358.52	5,746.76	4,000.27	-311.08	4,009.04	0.52	0.47	0.23
9,714.00	89.33	357.66	5,747.81	4,093.21	-314.18	4,102.03	0.93	-0.05	-0.92
9,808.00	88.96	359.97	5,749.21	4,187.17	-316.12	4,196.00	2.49	-0.39	2.46
9,901.00	88.76	0.62	5,751.06	4,280.15	-315.64	4,288.90	0.73	-0.22	0.70
9,994.00	90.63	1.10	5,751.55	4,373.13	-314.25	4,381.77	2.08	2.01	0.52
10,087.00	90.53	359.36	5,750.61	4,466.13	-313.87	4,474.68	1.87	-0.11	-1.87
10,179.00	91.09	0.13	5,749.31	4,558.11	-314.28	4,566.62	1.03	0.61	0.84
10,272.00	90.78	359.26	5,747.79	4,651.10	-314.78	4,659.56	0.99	-0.33	-0.94
10,365.00	89.87	359.25	5,747.27	4,744.09	-315.99	4,752.53	0.98	-0.98	-0.01
10,458.00	89.41	358.93	5,747.85	4,837.08	-317.46	4,845.51	0.60	-0.49	-0.34
10,552.00	89.41	0.56	5,748.82	4,931.07	-317.88	4,939.45	1.73	0.00	1.73
10,645.00	89.14	0.78	5,750.00	5,024.05	-316.79	5,032.33	0.37	-0.29	0.24
10,738.00	88.38	0.29	5,752.01	5,117.03	-315.93	5,125.21	0.97	-0.82	-0.53
10,831.00	89.01	2.07	5,754.13	5,209.98	-314.01	5,218.03	2.03	0.68	1.91
10,924.00	90.58	2.24	5,754.46	5,302.91	-310.51	5,310.76	1.70	1.69	0.18
11,017.00	90.05	1.18	5,753.95	5,395.86	-307.74	5,403.55	1.27	-0.57	-1.14
11,110.00	90.34	2.42	5,753.63	5,488.82	-304.82	5,496.33	1.37	0.31	1.33
11,202.00	90.53	3.78	5,752.93	5,580.68	-299.84	5,587.95	1.49	0.21	1.48
11,295.00	90.36	3.27	5,752.21	5,673.50	-294.13	5,680.49	0.58	-0.18	-0.55
11,388.00	89.55	1.16	5,752.28	5,766.42	-290.53	5,773.22	2.43	-0.87	-2.27
11,481.00	89.75	0.63	5,752.85	5,859.41	-289.08	5,866.09	0.61	0.22	-0.57
11,575.00	89.35	0.55	5,753.59	5,953.40	-288.11	5,959.98	0.43	-0.43	-0.09
11,670.00	88.77	0.70	5,755.15	6,048.38	-287.07	6,054.86	0.63	-0.61	0.16
11,764.00	90.36	359.30	5,755.86	6,142.37	-287.07	6,148.79	2.25	1.69	-1.49
11,859.00	91.04	359.60	5,754.70	6,237.36	-287.99	6,243.74	0.78	0.72	0.32
11,954.00	90.58	358.36	5,753.36	6,332.33	-289.68	6,338.72	1.39	-0.48	-1.31
12,048.00	91.33	358.37	5,751.79	6,426.28	-292.36	6,432.70	0.80	0.80	0.01
12,143.00	91.85	357.59	5,749.16	6,521.19	-295.71	6,527.66	0.99	0.55	-0.82
12,238.00	90.11	359.19	5,747.53	6,616.13	-298.37	6,622.64	2.49	-1.83	1.68
12,332.00	90.35	2.22	5,747.15	6,710.11	-297.22	6,716.51	3.23	0.26	3.22
12,427.00	90.57	4.99	5,746.39	6,804.91	-291.25	6,811.02	2.92	0.23	2.92
12,522.00	89.19	0.21	5,746.59	6,899.78	-286.94	6,905.67	5.24	-1.45	-5.03
12,616.00	88.59	359.64	5,748.41	6,993.76	-287.06	6,999.59	0.88	-0.64	-0.61
12,711.00	89.24	358.82	5,750.21	7,088.73	-288.34	7,094.55	1.10	0.68	-0.86
12,806.00	89.13	357.61	5,751.56	7,183.68	-291.30	7,189.54	1.28	-0.12	-1.27
12,901.00	90.46	358.91	5,751.90	7,278.63	-294.18	7,284.53	1.96	1.40	1.37

Precision Drilling Corporation

Survey Report

Company:	WHITING PETROLEUM CORP.	Local Co-ordinate Reference:	Well Razor #26I-2346
Project:	Weld County, CO	TVD Reference:	4711'GL+21'KB @ 4732.00usft (Unit 406)
Site:	Sec 26-T10N-R58W	MD Reference:	4711'GL+21'KB @ 4732.00usft (Unit 406)
Well:	Razor #26I-2346	North Reference:	True
Wellbore:	Original Hole	Survey Calculation Method:	Minimum Curvature
Design:	Original Hole	Database:	Local Database

Survey

Measured Depth (usft)	Inclination (°)	Azimuth (°)	Vertical Depth (usft)	+N/-S (usft)	+E/-W (usft)	Vertical Section (usft)	Dogleg Rate (°/100usft)	Build Rate (°/100usft)	Turn Rate (°/100usft)
12,995.00	90.69	358.90	5,750.96	7,372.61	-295.98	7,378.51	0.24	0.24	-0.01
13,090.00	89.59	357.62	5,750.73	7,467.56	-298.86	7,473.50	1.78	-1.16	-1.35
13,185.00	91.51	359.07	5,749.81	7,562.51	-301.60	7,568.49	2.53	2.02	1.53
13,279.00	91.80	358.83	5,747.10	7,656.45	-303.33	7,662.43	0.40	0.31	-0.26
13,374.00	92.14	358.36	5,743.83	7,751.37	-305.65	7,757.37	0.61	0.36	-0.49
13,469.00	90.56	359.33	5,741.60	7,846.32	-307.57	7,852.33	1.95	-1.66	1.02
13,564.00	90.70	359.16	5,740.55	7,941.30	-308.82	7,947.29	0.23	0.15	-0.18
13,658.00	90.93	358.78	5,739.21	8,035.28	-310.51	8,041.27	0.47	0.24	-0.40
13,758.00	91.62	358.27	5,736.99	8,135.22	-313.08	8,141.23	0.86	0.69	-0.51
13,820.00	91.62	358.27	5,735.24	8,197.17	-314.95	8,203.21	0.00	0.00	0.00

Design Targets

Target Name

- hit/miss target - Shape	Dip Angle (°)	Dip Dir. (°)	TVD (usft)	+N/-S (usft)	+E/-W (usft)	Northing (usft)	Easting (usft)	Latitude	Longitude
Surface #26I-2346 - actual wellpath hits target center - Point	0.00	0.00	0.00	0.00	0.00	1,541,850.52	3,463,537.56	40.808747°N	103.825459°W
100' ML Entry #26I-23 - actual wellpath hits target center - Point	0.00	0.00	5,722.07	434.57	-305.40	1,542,279.25	3,463,224.01	40.809940°N	103.826562°W
BHL #26I-2346 - actual wellpath hits target center - Point	0.00	0.00	5,735.24	8,197.17	-314.95	1,550,040.28	3,463,067.87	40.831246°N	103.826597°W
PBHL #26I-2346 - actual wellpath misses target center by 14.58usft at 13820.00usft MD (5735.24 TVD, 8197.17 N, -314.95 E) - Point	0.00	0.00	5,743.00	8,199.69	-302.87	1,550,043.03	3,463,079.91	40.831253°N	103.826553°W
7" Casing Point #26I-23 - actual wellpath hits target center - Point	0.00	0.00	5,745.35	608.49	-299.16	1,542,453.26	3,463,226.96	40.810417°N	103.826539°W

Design Annotations

Measured Depth (usft)	Vertical Depth (usft)	Local Coordinates +N/-S (usft)	+E/-W (usft)	Comment
6,051.00	5,722.07	434.57	-305.40	100' ML Entry
6,227.00	5,745.35	608.49	-299.16	7" Casing Point