

Bison Oil & Gas II, LLC

WELD COUNTY, COLORADO (NAD 83)

BIG MOUNTAIN VIPER 8-59 16 NWSW SEC. 16 T8N R59W

BIG MOUNTAIN VIPER FED 8-59 16-17-18-1

Wellbore #1

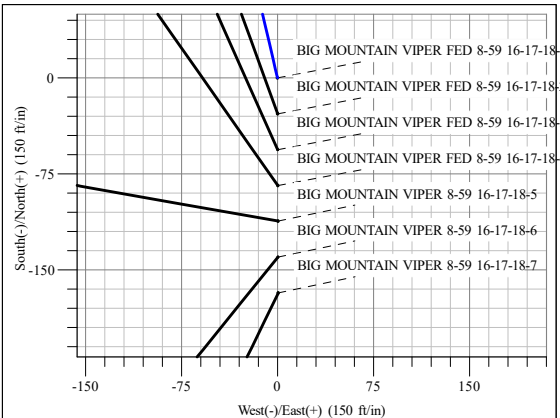
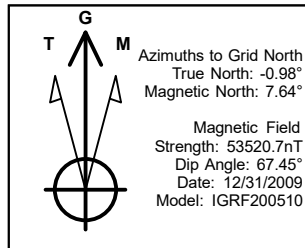
Plan: Design #1

Standard Survey Report

06 October, 2020



Project: WELD COUNTY, COLORADO (NAD 83)
Site: BIG MOUNTAIN VIPER 8-59 16 NWSW SEC. 16 T8N R59W
Well: BIG MOUNTAIN VIPER FED 8-59 16-17-18-1
Wellbore: Wellbore #1
Design: Design #1



ANNOTATIONS

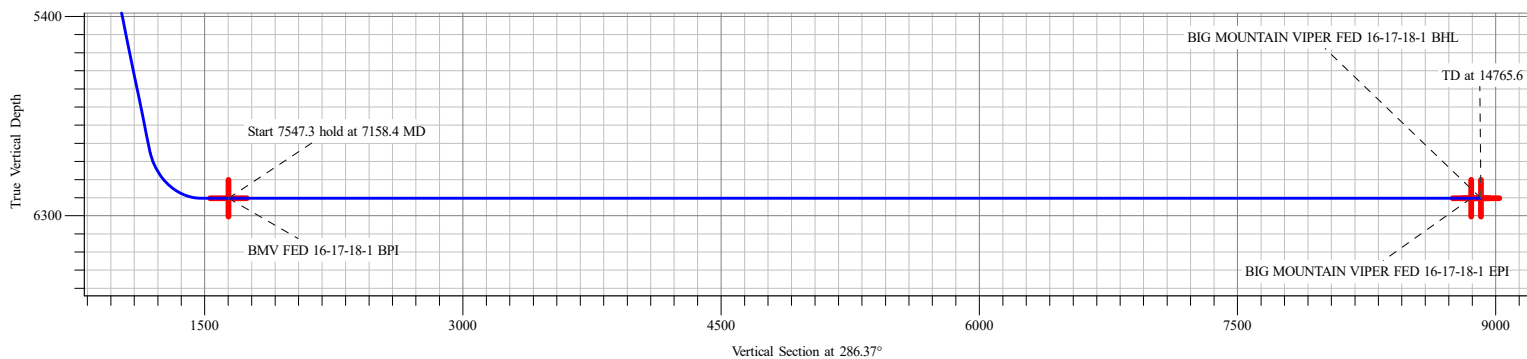
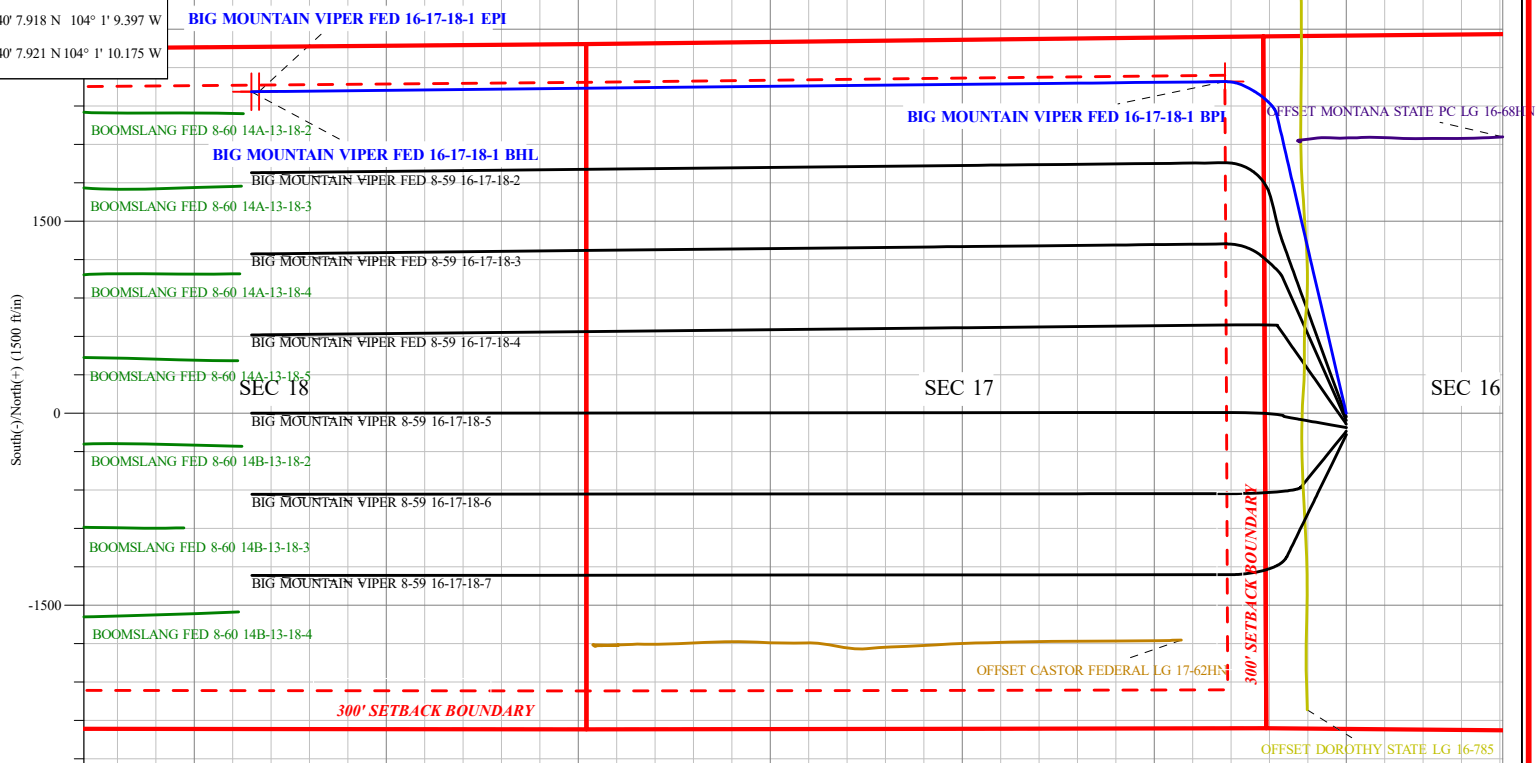
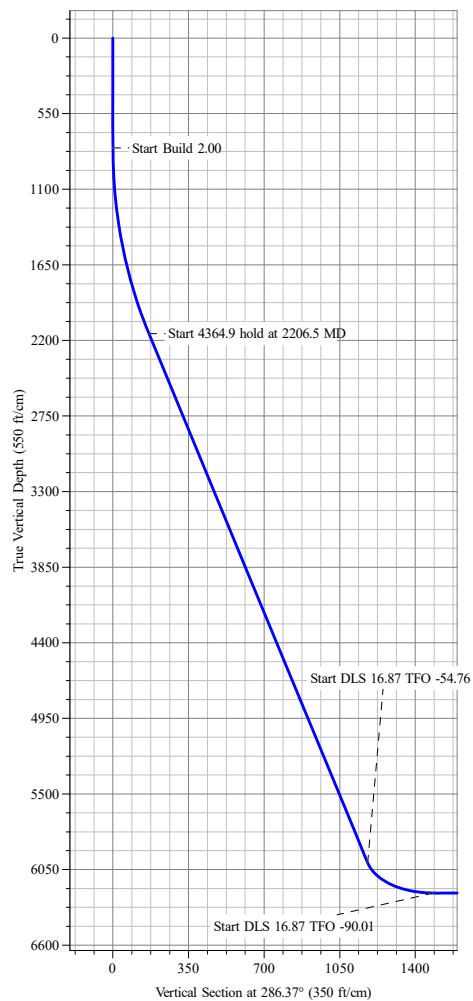
MD	Inc	Azi	TVD	+N/-S	+E/-W	VSec	Departure	Annotation
800.0	0.00	0.00	800.0	0.0	0.0	0.0	0.0	Start Build 2.00
2206.5	28.13	346.90	2150.7	329.6	-76.7	166.5	338.4	Start 4364.9 hold at 2206.5 MD
6571.4	28.13	346.90	6000.0	2334.0	-543.1	1178.9	2396.3	Start DLS 16.87 TFO -54.76
7003.2	90.00	295.60	6221.0	2557.3	-795.9	1484.4	2742.0	Start DLS 16.87 TFO -90.01
7158.4	90.00	269.41	6221.0	2590.6	-946.1	1637.9	2897.2	Start 7547.3 hold at 7158.4 MD
14705.7	90.00	269.41	6221.0	2513.0	-8493.0	8857.0	10444.5	Start 59.9 hold at 14705.7 MD
14765.6	90.00	269.41	6221.0	2512.4	-8552.9	8914.3	10504.4	TD at 14765.6

PROPOSED LOCAL COORDINATES:

SHL: 2467 ft FNL & 635 ft FWL Sec 16
BPI : 350 ft FNL & 300 ft FEL Sec 17
EPI: 350 ft FNL & 2555 ft FEL Sec 18
BHL: 350 ft FNL & 2615 ft FEL Sec 18

DESIGN TARGET DETAILS

Name	TVD	+N/-S	+E/-W	Northing	Easting	Latitude	Longitude
BMV FED 16-17-18-1 BPI	6221.0	2590.6	-946.1	454158.32	1041896.53	40° 40' 7.428 N 03° 59' 31.456 W	
BMV FED 16-17-18-1 EPI	6221.0	2513.0	-8493.0	454134.66	1039596.24	40° 40' 7.918 N 104° 1' 9.397 W	
BMV FED 16-17-18-1 BHL	6221.0	2512.4	-8552.9	454134.46	1039577.98	40° 40' 7.921 N 104° 1' 10.175 W	



Survey Report

Company:	Bison Oil & Gas II, LLC	Local Co-ordinate Reference:	Well BIG MOUNTAIN VIPER FED 8-59 16-17-18-1
Project:	WELD COUNTY, COLORADO (NAD 83)	TVD Reference:	KB 25 @ 4900.8ft
Site:	BIG MOUNTAIN VIPER 8-59 16 NWSE SEC. 16 T8N R59W	MD Reference:	KB 25 @ 4900.8ft
Well:	BIG MOUNTAIN VIPER FED 8-59 16-17-18-1	North Reference:	Grid
Wellbore:	Wellbore #1	Survey Calculation Method:	Minimum Curvature
Design:	Design #1	Database:	EDM 5000.16 Single User Db

Project	WELD COUNTY, COLORADO (NAD 83),		
Map System:	US State Plane 1983	System Datum:	Mean Sea Level
Geo Datum:	North American Datum 1983		
Map Zone:	Colorado Northern Zone		

Site		BIG MOUNTAIN VIPER 8-59 16 NWSE SEC. 16 T8N R59W			
Site Position:		Northing:		453,343.04 m	
From:		Easting:		1,042,185.01 m	
Position Uncertainty:		Slot Radius:		0.000 in	
Lat/Long				Latitude:	
				40° 39' 40.842 N	
				Longitude:	
				103° 59' 19.766 W	

Well		BIG MOUNTAIN VIPER FED 8-59 16-17-18-1				
Well Position	+N/-S	0.0 ft	Northing:	453,368.69 m	Latitude:	40° 39' 41.673 N
	+E/-W	0.0 ft	Easting:	1,042,184.92 m	Longitude:	103° 59' 19.752 W
Position Uncertainty		0.0 ft	Wellhead Elevation:	ft	Ground Level:	4,875.8 ft
Grid Convergence:		0.98 °				

Wellbore	Wellbore #1
-----------------	-------------

Magnetics	Model Name	Sample Date	Declination (°)	Dip Angle (°)	Field Strength (nT)
	IGRF200510	12/31/2009	8.62	67.45	53,520.66455698

Planned Survey									
Measured Depth (ft)	Inclination (°)	Azimuth (°)	Vertical Depth (ft)	+N/-S (ft)	+E/-W (ft)	Vertical Section (ft)	Dogleg Rate (°/100ft)	Build Rate (°/100ft)	Turn Rate (°/100ft)
0.0	0.00	0.00	0.0	0.0	0.0	0.0	0.00	0.00	0.00
100.0	0.00	0.00	100.0	0.0	0.0	0.0	0.00	0.00	0.00
200.0	0.00	0.00	200.0	0.0	0.0	0.0	0.00	0.00	0.00
300.0	0.00	0.00	300.0	0.0	0.0	0.0	0.00	0.00	0.00
400.0	0.00	0.00	400.0	0.0	0.0	0.0	0.00	0.00	0.00
500.0	0.00	0.00	500.0	0.0	0.0	0.0	0.00	0.00	0.00
600.0	0.00	0.00	600.0	0.0	0.0	0.0	0.00	0.00	0.00
700.0	0.00	0.00	700.0	0.0	0.0	0.0	0.00	0.00	0.00
800.0	0.00	0.00	800.0	0.0	0.0	0.0	0.00	0.00	0.00
Start Build 2.00									
900.0	2.00	346.90	900.0	1.7	-0.4	0.9	2.00	2.00	0.00
1,000.0	4.00	346.90	999.8	6.8	-1.6	3.4	2.00	2.00	0.00
1,100.0	6.00	346.90	1,099.5	15.3	-3.6	7.7	2.00	2.00	0.00
1,200.0	8.00	346.90	1,198.7	27.2	-6.3	13.7	2.00	2.00	0.00
1,300.0	10.00	346.90	1,297.5	42.4	-9.9	21.4	2.00	2.00	0.00
1,400.0	12.00	346.90	1,395.6	61.0	-14.2	30.8	2.00	2.00	0.00
1,500.0	14.00	346.90	1,493.1	82.9	-19.3	41.9	2.00	2.00	0.00
1,600.0	16.00	346.90	1,589.6	108.1	-25.2	54.6	2.00	2.00	0.00
1,700.0	18.00	346.90	1,685.3	136.6	-31.8	69.0	2.00	2.00	0.00
1,800.0	20.00	346.90	1,779.8	168.3	-39.2	85.0	2.00	2.00	0.00
1,900.0	22.00	346.90	1,873.2	203.2	-47.3	102.6	2.00	2.00	0.00

Survey Report

Company:	Bison Oil & Gas II, LLC	Local Co-ordinate Reference:	Well BIG MOUNTAIN VIPER FED 8-59 16-17-18-1
Project:	WELD COUNTY, COLORADO (NAD 83)	TVD Reference:	KB 25 @ 4900.8ft
Site:	BIG MOUNTAIN VIPER 8-59 16 NWSE SEC. 16 T8N R59W	MD Reference:	KB 25 @ 4900.8ft
Well:	BIG MOUNTAIN VIPER FED 8-59 16-17-18-1	North Reference:	Grid
Wellbore:	Wellbore #1	Survey Calculation Method:	Minimum Curvature
Design:	Design #1	Database:	EDM 5000.16 Single User Db

Planned Survey

Measured Depth (ft)	Inclination (°)	Azimuth (°)	Vertical Depth (ft)	+N/-S (ft)	+E/-W (ft)	Vertical Section (ft)	Dogleg Rate (°/100ft)	Build Rate (°/100ft)	Turn Rate (°/100ft)
2,000.0	24.00	346.90	1,965.2	241.2	-56.1	121.8	2.00	2.00	0.00
2,100.0	26.00	346.90	2,055.8	282.4	-65.7	142.6	2.00	2.00	0.00
2,200.0	28.00	346.90	2,144.9	326.6	-76.0	165.0	2.00	2.00	0.00
2,206.5	28.13	346.90	2,150.7	329.6	-76.7	166.5	2.00	2.00	0.00
Start 4364.9 hold at 2206.5 MD									
2,300.0	28.13	346.90	2,233.1	372.5	-86.7	188.2	0.00	0.00	0.00
2,400.0	28.13	346.90	2,321.3	418.4	-97.4	211.4	0.00	0.00	0.00
2,500.0	28.13	346.90	2,409.5	464.4	-108.1	234.6	0.00	0.00	0.00
2,600.0	28.13	346.90	2,497.7	510.3	-118.7	257.7	0.00	0.00	0.00
2,700.0	28.13	346.90	2,585.9	556.2	-129.4	280.9	0.00	0.00	0.00
2,800.0	28.13	346.90	2,674.1	602.1	-140.1	304.1	0.00	0.00	0.00
2,900.0	28.13	346.90	2,762.3	648.0	-150.8	327.3	0.00	0.00	0.00
3,000.0	28.13	346.90	2,850.4	694.0	-161.5	350.5	0.00	0.00	0.00
3,100.0	28.13	346.90	2,938.6	739.9	-172.2	373.7	0.00	0.00	0.00
3,200.0	28.13	346.90	3,026.8	785.8	-182.9	396.9	0.00	0.00	0.00
3,300.0	28.13	346.90	3,115.0	831.7	-193.5	420.1	0.00	0.00	0.00
3,400.0	28.13	346.90	3,203.2	877.6	-204.2	443.3	0.00	0.00	0.00
3,500.0	28.13	346.90	3,291.4	923.6	-214.9	466.5	0.00	0.00	0.00
3,600.0	28.13	346.90	3,379.6	969.5	-225.6	489.7	0.00	0.00	0.00
3,700.0	28.13	346.90	3,467.8	1,015.4	-236.3	512.9	0.00	0.00	0.00
3,800.0	28.13	346.90	3,555.9	1,061.3	-247.0	536.1	0.00	0.00	0.00
3,900.0	28.13	346.90	3,644.1	1,107.2	-257.7	559.3	0.00	0.00	0.00
4,000.0	28.13	346.90	3,732.3	1,153.2	-268.3	582.5	0.00	0.00	0.00
4,100.0	28.13	346.90	3,820.5	1,199.1	-279.0	605.7	0.00	0.00	0.00
4,200.0	28.13	346.90	3,908.7	1,245.0	-289.7	628.9	0.00	0.00	0.00
4,300.0	28.13	346.90	3,996.9	1,290.9	-300.4	652.1	0.00	0.00	0.00
4,400.0	28.13	346.90	4,085.1	1,336.8	-311.1	675.3	0.00	0.00	0.00
4,500.0	28.13	346.90	4,173.3	1,382.8	-321.8	698.5	0.00	0.00	0.00
4,600.0	28.13	346.90	4,261.5	1,428.7	-332.5	721.6	0.00	0.00	0.00
4,700.0	28.13	346.90	4,349.6	1,474.6	-343.2	744.8	0.00	0.00	0.00
4,800.0	28.13	346.90	4,437.8	1,520.5	-353.8	768.0	0.00	0.00	0.00
4,900.0	28.13	346.90	4,526.0	1,566.4	-364.5	791.2	0.00	0.00	0.00
5,000.0	28.13	346.90	4,614.2	1,612.4	-375.2	814.4	0.00	0.00	0.00
5,100.0	28.13	346.90	4,702.4	1,658.3	-385.9	837.6	0.00	0.00	0.00
5,200.0	28.13	346.90	4,790.6	1,704.2	-396.6	860.8	0.00	0.00	0.00
5,300.0	28.13	346.90	4,878.8	1,750.1	-407.3	884.0	0.00	0.00	0.00
5,400.0	28.13	346.90	4,967.0	1,796.1	-418.0	907.2	0.00	0.00	0.00
5,500.0	28.13	346.90	5,055.1	1,842.0	-428.6	930.4	0.00	0.00	0.00
5,600.0	28.13	346.90	5,143.3	1,887.9	-439.3	953.6	0.00	0.00	0.00
5,700.0	28.13	346.90	5,231.5	1,933.8	-450.0	976.8	0.00	0.00	0.00
5,800.0	28.13	346.90	5,319.7	1,979.7	-460.7	1,000.0	0.00	0.00	0.00
5,900.0	28.13	346.90	5,407.9	2,025.7	-471.4	1,023.2	0.00	0.00	0.00

Survey Report

Company:	Bison Oil & Gas II, LLC	Local Co-ordinate Reference:	Well BIG MOUNTAIN VIPER FED 8-59 16-17-18-1
Project:	WELD COUNTY, COLORADO (NAD 83)	TVD Reference:	KB 25 @ 4900.8ft
Site:	BIG MOUNTAIN VIPER 8-59 16 NWSE SEC. 16 T8N R59W	MD Reference:	KB 25 @ 4900.8ft
Well:	BIG MOUNTAIN VIPER FED 8-59 16-17-18-1	North Reference:	Grid
Wellbore:	Wellbore #1	Survey Calculation Method:	Minimum Curvature
Design:	Design #1	Database:	EDM 5000.16 Single User Db

Planned Survey

Measured Depth (ft)	Inclination (°)	Azimuth (°)	Vertical Depth (ft)	+N/-S (ft)	+E/-W (ft)	Vertical Section (ft)	Dogleg Rate (°/100ft)	Build Rate (°/100ft)	Turn Rate (°/100ft)
6,000.0	28.13	346.90	5,496.1	2,071.6	-482.1	1,046.4	0.00	0.00	0.00
6,100.0	28.13	346.90	5,584.3	2,117.5	-492.8	1,069.6	0.00	0.00	0.00
6,200.0	28.13	346.90	5,672.5	2,163.4	-503.4	1,092.8	0.00	0.00	0.00
6,300.0	28.13	346.90	5,760.6	2,209.3	-514.1	1,116.0	0.00	0.00	0.00
6,400.0	28.13	346.90	5,848.8	2,255.3	-524.8	1,139.2	0.00	0.00	0.00
6,500.0	28.13	346.90	5,937.0	2,301.2	-535.5	1,162.4	0.00	0.00	0.00
6,571.4	28.13	346.90	6,000.0	2,334.0	-543.1	1,178.9	0.00	0.00	0.00
Start DLS 16.87 TFO -54.76									
6,600.0	31.14	339.27	6,024.9	2,347.5	-547.3	1,186.7	16.87	10.54	-26.69
6,700.0	44.04	321.16	6,104.2	2,399.1	-578.5	1,231.2	16.87	12.90	-18.11
6,800.0	58.68	310.31	6,166.6	2,454.2	-633.2	1,299.2	16.87	14.63	-10.85
6,900.0	73.97	302.48	6,206.6	2,508.0	-706.9	1,385.1	16.87	15.29	-7.82
7,000.0	89.50	295.81	6,221.0	2,555.9	-793.0	1,481.3	16.87	15.53	-6.68
7,003.2	90.00	295.60	6,221.0	2,557.3	-795.9	1,484.4	16.87	15.57	-6.50
Start DLS 16.87 TFO -90.01									
7,100.0	90.00	279.27	6,221.0	2,586.2	-888.0	1,580.9	16.87	0.00	-16.87
7,158.4	90.00	269.41	6,221.0	2,590.6	-946.1	1,637.9	16.87	0.00	-16.87
Start 7547.3 hold at 7158.4 MD - BMV FED 16-17-18-1 BPI									
7,200.0	90.00	269.41	6,221.0	2,590.2	-987.7	1,677.7	0.00	0.00	0.00
7,300.0	90.00	269.41	6,221.0	2,589.2	-1,087.7	1,773.4	0.00	0.00	0.00
7,400.0	90.00	269.41	6,221.0	2,588.2	-1,187.7	1,869.0	0.00	0.00	0.00
7,500.0	90.00	269.41	6,221.0	2,587.1	-1,287.7	1,964.7	0.00	0.00	0.00
7,600.0	90.00	269.41	6,221.0	2,586.1	-1,387.7	2,060.3	0.00	0.00	0.00
7,700.0	90.00	269.41	6,221.0	2,585.1	-1,487.7	2,156.0	0.00	0.00	0.00
7,800.0	90.00	269.41	6,221.0	2,584.0	-1,587.7	2,251.6	0.00	0.00	0.00
7,900.0	90.00	269.41	6,221.0	2,583.0	-1,687.7	2,347.3	0.00	0.00	0.00
8,000.0	90.00	269.41	6,221.0	2,582.0	-1,787.7	2,442.9	0.00	0.00	0.00
8,100.0	90.00	269.41	6,221.0	2,581.0	-1,887.7	2,538.6	0.00	0.00	0.00
8,200.0	90.00	269.41	6,221.0	2,579.9	-1,987.7	2,634.2	0.00	0.00	0.00
8,300.0	90.00	269.41	6,221.0	2,578.9	-2,087.7	2,729.9	0.00	0.00	0.00
8,400.0	90.00	269.41	6,221.0	2,577.9	-2,187.7	2,825.5	0.00	0.00	0.00
8,500.0	90.00	269.41	6,221.0	2,576.8	-2,287.7	2,921.2	0.00	0.00	0.00
8,600.0	90.00	269.41	6,221.0	2,575.8	-2,387.6	3,016.8	0.00	0.00	0.00
8,700.0	90.00	269.41	6,221.0	2,574.8	-2,487.6	3,112.5	0.00	0.00	0.00
8,800.0	90.00	269.41	6,221.0	2,573.8	-2,587.6	3,208.1	0.00	0.00	0.00
8,900.0	90.00	269.41	6,221.0	2,572.7	-2,687.6	3,303.8	0.00	0.00	0.00
9,000.0	90.00	269.41	6,221.0	2,571.7	-2,787.6	3,399.4	0.00	0.00	0.00
9,100.0	90.00	269.41	6,221.0	2,570.7	-2,887.6	3,495.1	0.00	0.00	0.00
9,200.0	90.00	269.41	6,221.0	2,569.6	-2,987.6	3,590.7	0.00	0.00	0.00
9,300.0	90.00	269.41	6,221.0	2,568.6	-3,087.6	3,686.4	0.00	0.00	0.00
9,400.0	90.00	269.41	6,221.0	2,567.6	-3,187.6	3,782.0	0.00	0.00	0.00
9,500.0	90.00	269.41	6,221.0	2,566.6	-3,287.6	3,877.7	0.00	0.00	0.00

Survey Report

Company:	Bison Oil & Gas II, LLC	Local Co-ordinate Reference:	Well BIG MOUNTAIN VIPER FED 8-59 16-17-18-1
Project:	WELD COUNTY, COLORADO (NAD 83)	TVD Reference:	KB 25 @ 4900.8ft
Site:	BIG MOUNTAIN VIPER 8-59 16 NWSE SEC. 16 T8N R59W	MD Reference:	KB 25 @ 4900.8ft
Well:	BIG MOUNTAIN VIPER FED 8-59 16-17-18-1	North Reference:	Grid
Wellbore:	Wellbore #1	Survey Calculation Method:	Minimum Curvature
Design:	Design #1	Database:	EDM 5000.16 Single User Db

Planned Survey

Measured Depth (ft)	Inclination (°)	Azimuth (°)	Vertical Depth (ft)	+N/-S (ft)	+E/-W (ft)	Vertical Section (ft)	Dogleg Rate (°/100ft)	Build Rate (°/100ft)	Turn Rate (°/100ft)
9,600.0	90.00	269.41	6,221.0	2,565.5	-3,387.6	3,973.3	0.00	0.00	0.00
9,700.0	90.00	269.41	6,221.0	2,564.5	-3,487.6	4,069.0	0.00	0.00	0.00
9,800.0	90.00	269.41	6,221.0	2,563.5	-3,587.6	4,164.6	0.00	0.00	0.00
9,900.0	90.00	269.41	6,221.0	2,562.4	-3,687.6	4,260.3	0.00	0.00	0.00
10,000.0	90.00	269.41	6,221.0	2,561.4	-3,787.6	4,355.9	0.00	0.00	0.00
10,100.0	90.00	269.41	6,221.0	2,560.4	-3,887.6	4,451.6	0.00	0.00	0.00
10,200.0	90.00	269.41	6,221.0	2,559.4	-3,987.6	4,547.2	0.00	0.00	0.00
10,300.0	90.00	269.41	6,221.0	2,558.3	-4,087.6	4,642.9	0.00	0.00	0.00
10,400.0	90.00	269.41	6,221.0	2,557.3	-4,187.6	4,738.5	0.00	0.00	0.00
10,500.0	90.00	269.41	6,221.0	2,556.3	-4,287.5	4,834.2	0.00	0.00	0.00
10,600.0	90.00	269.41	6,221.0	2,555.2	-4,387.5	4,929.8	0.00	0.00	0.00
10,700.0	90.00	269.41	6,221.0	2,554.2	-4,487.5	5,025.5	0.00	0.00	0.00
10,800.0	90.00	269.41	6,221.0	2,553.2	-4,587.5	5,121.1	0.00	0.00	0.00
10,900.0	90.00	269.41	6,221.0	2,552.2	-4,687.5	5,216.8	0.00	0.00	0.00
11,000.0	90.00	269.41	6,221.0	2,551.1	-4,787.5	5,312.4	0.00	0.00	0.00
11,100.0	90.00	269.41	6,221.0	2,550.1	-4,887.5	5,408.1	0.00	0.00	0.00
11,200.0	90.00	269.41	6,221.0	2,549.1	-4,987.5	5,503.8	0.00	0.00	0.00
11,300.0	90.00	269.41	6,221.0	2,548.0	-5,087.5	5,599.4	0.00	0.00	0.00
11,400.0	90.00	269.41	6,221.0	2,547.0	-5,187.5	5,695.1	0.00	0.00	0.00
11,500.0	90.00	269.41	6,221.0	2,546.0	-5,287.5	5,790.7	0.00	0.00	0.00
11,600.0	90.00	269.41	6,221.0	2,545.0	-5,387.5	5,886.4	0.00	0.00	0.00
11,700.0	90.00	269.41	6,221.0	2,543.9	-5,487.5	5,982.0	0.00	0.00	0.00
11,800.0	90.00	269.41	6,221.0	2,542.9	-5,587.5	6,077.7	0.00	0.00	0.00
11,900.0	90.00	269.41	6,221.0	2,541.9	-5,687.5	6,173.3	0.00	0.00	0.00
12,000.0	90.00	269.41	6,221.0	2,540.8	-5,787.5	6,269.0	0.00	0.00	0.00
12,100.0	90.00	269.41	6,221.0	2,539.8	-5,887.5	6,364.6	0.00	0.00	0.00
12,200.0	90.00	269.41	6,221.0	2,538.8	-5,987.5	6,460.3	0.00	0.00	0.00
12,300.0	90.00	269.41	6,221.0	2,537.8	-6,087.5	6,555.9	0.00	0.00	0.00
12,400.0	90.00	269.41	6,221.0	2,536.7	-6,187.4	6,651.6	0.00	0.00	0.00
12,500.0	90.00	269.41	6,221.0	2,535.7	-6,287.4	6,747.2	0.00	0.00	0.00
12,600.0	90.00	269.41	6,221.0	2,534.7	-6,387.4	6,842.9	0.00	0.00	0.00
12,700.0	90.00	269.41	6,221.0	2,533.6	-6,487.4	6,938.5	0.00	0.00	0.00
12,800.0	90.00	269.41	6,221.0	2,532.6	-6,587.4	7,034.2	0.00	0.00	0.00
12,900.0	90.00	269.41	6,221.0	2,531.6	-6,687.4	7,129.8	0.00	0.00	0.00
13,000.0	90.00	269.41	6,221.0	2,530.6	-6,787.4	7,225.5	0.00	0.00	0.00
13,100.0	90.00	269.41	6,221.0	2,529.5	-6,887.4	7,321.1	0.00	0.00	0.00
13,200.0	90.00	269.41	6,221.0	2,528.5	-6,987.4	7,416.8	0.00	0.00	0.00
13,300.0	90.00	269.41	6,221.0	2,527.5	-7,087.4	7,512.4	0.00	0.00	0.00
13,400.0	90.00	269.41	6,221.0	2,526.4	-7,187.4	7,608.1	0.00	0.00	0.00
13,500.0	90.00	269.41	6,221.0	2,525.4	-7,287.4	7,703.7	0.00	0.00	0.00
13,600.0	90.00	269.41	6,221.0	2,524.4	-7,387.4	7,799.4	0.00	0.00	0.00
13,700.0	90.00	269.41	6,221.0	2,523.4	-7,487.4	7,895.0	0.00	0.00	0.00

Survey Report

Company:	Bison Oil & Gas II, LLC	Local Co-ordinate Reference:	Well BIG MOUNTAIN VIPER FED 8-59 16-17-18-1
Project:	WELD COUNTY, COLORADO (NAD 83)	TVD Reference:	KB 25 @ 4900.8ft
Site:	BIG MOUNTAIN VIPER 8-59 16 NWSE SEC. 16 T8N R59W	MD Reference:	KB 25 @ 4900.8ft
Well:	BIG MOUNTAIN VIPER FED 8-59 16-17-18-1	North Reference:	Grid
Wellbore:	Wellbore #1	Survey Calculation Method:	Minimum Curvature
Design:	Design #1	Database:	EDM 5000.16 Single User Db

Planned Survey										
Measured Depth (ft)	Inclination (°)	Azimuth (°)	Vertical Depth (ft)	+N/-S (ft)	+E/-W (ft)	Vertical Section (ft)	Dogleg Rate (°/100ft)	Build Rate (°/100ft)	Turn Rate (°/100ft)	
13,800.0	90.00	269.41	6,221.0	2,522.3	-7,587.4	7,990.7	0.00	0.00	0.00	
13,900.0	90.00	269.41	6,221.0	2,521.3	-7,687.4	8,086.3	0.00	0.00	0.00	
14,000.0	90.00	269.41	6,221.0	2,520.3	-7,787.4	8,182.0	0.00	0.00	0.00	
14,100.0	90.00	269.41	6,221.0	2,519.2	-7,887.4	8,277.6	0.00	0.00	0.00	
14,200.0	90.00	269.41	6,221.0	2,518.2	-7,987.4	8,373.3	0.00	0.00	0.00	
14,300.0	90.00	269.41	6,221.0	2,517.2	-8,087.3	8,468.9	0.00	0.00	0.00	
14,400.0	90.00	269.41	6,221.0	2,516.2	-8,187.3	8,564.6	0.00	0.00	0.00	
14,500.0	90.00	269.41	6,221.0	2,515.1	-8,287.3	8,660.2	0.00	0.00	0.00	
14,600.0	90.00	269.41	6,221.0	2,514.1	-8,387.3	8,755.9	0.00	0.00	0.00	
14,700.0	90.00	269.41	6,221.0	2,513.1	-8,487.3	8,851.5	0.00	0.00	0.00	
14,705.7	90.00	269.41	6,221.0	2,513.0	-8,493.0	8,857.0	0.00	0.00	0.00	
Start 59.9 hold at 14705.7 MD - BMV FED 16-17-18-1 EPI										
14,765.6	90.00	269.41	6,221.0	2,512.4	-8,552.9	8,914.3	0.00	0.00	0.00	
TD at 14765.6 - BMV FED 16-17-18-1 BHL										

Design Targets										
Target Name	Dip Angle (°)	Dip Dir. (°)	TVD (ft)	+N/-S (ft)	+E/-W (ft)	Northing (m)	Easting (m)	Latitude		Longitude
BMV FED 16-17-18-1 - hit/miss target - Shape - Point	0.00	0.00	6,221.0	2,513.0	-8,493.0	454,134.66	1,039,596.24	40° 40' 7.918 N		104° 1' 9.397 W
BMV FED 16-17-18-1 - plan hits target center - Point	0.00	359.02	6,221.0	2,590.6	-946.1	454,158.32	1,041,896.53	40° 40' 7.428 N		103° 59' 31.456 W
BMV FED 16-17-18-1 - plan hits target center - Point	0.00	0.00	6,221.0	2,512.4	-8,552.9	454,134.46	1,039,577.98	40° 40' 7.921 N		104° 1' 10.175 W

Plan Annotations					
Measured Depth (ft)	Vertical Depth (ft)	Local Coordinates		Comment	
		+N/-S (ft)	+E/-W (ft)		
800	800	0	0	Start Build 2.00	
2206	2151	330	-77	Start 4364.9 hold at 2206.5 MD	
6571	6000	2334	-543	Start DLS 16.87 TFO -54.76	
7003	6221	2557	-796	Start DLS 16.87 TFO -90.01	
7158	6221	2591	-946	Start 7547.3 hold at 7158.4 MD	
14,706	6221	2513	-8493	Start 59.9 hold at 14705.7 MD	
14,766	6221	2512	-8553	TD at 14765.6	