

SRC ENERGY

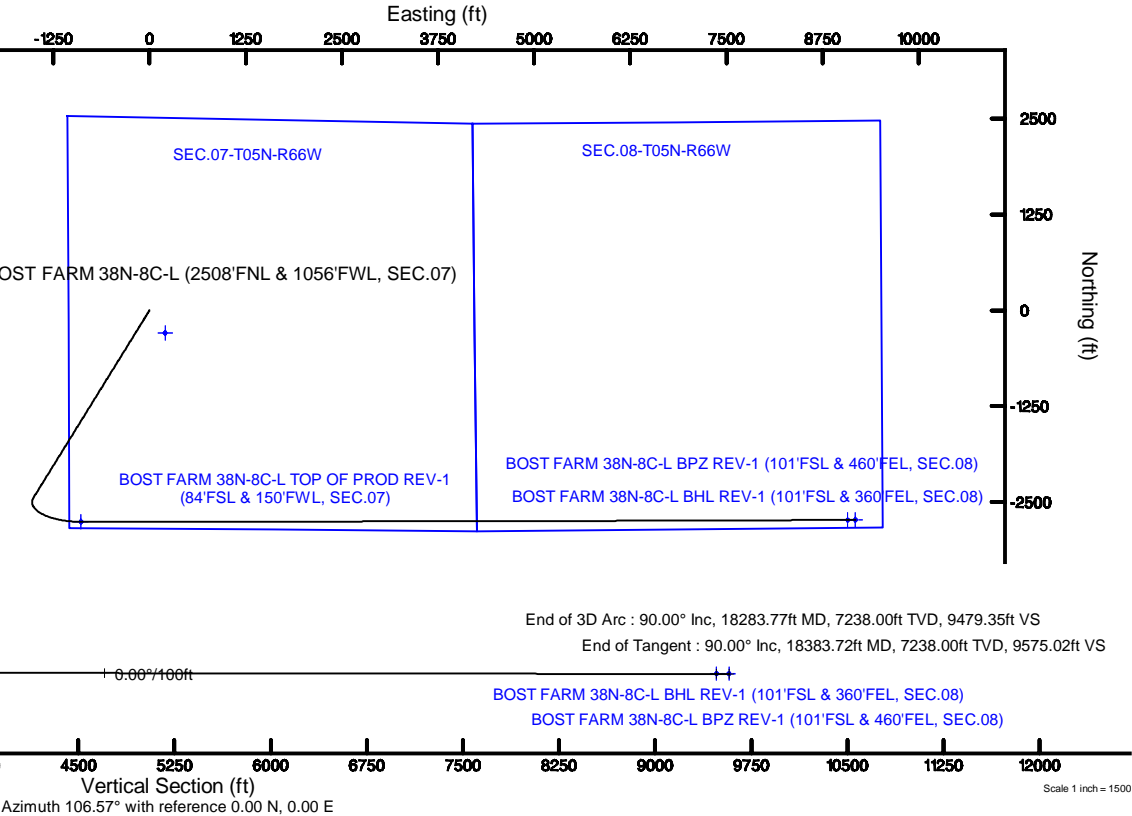
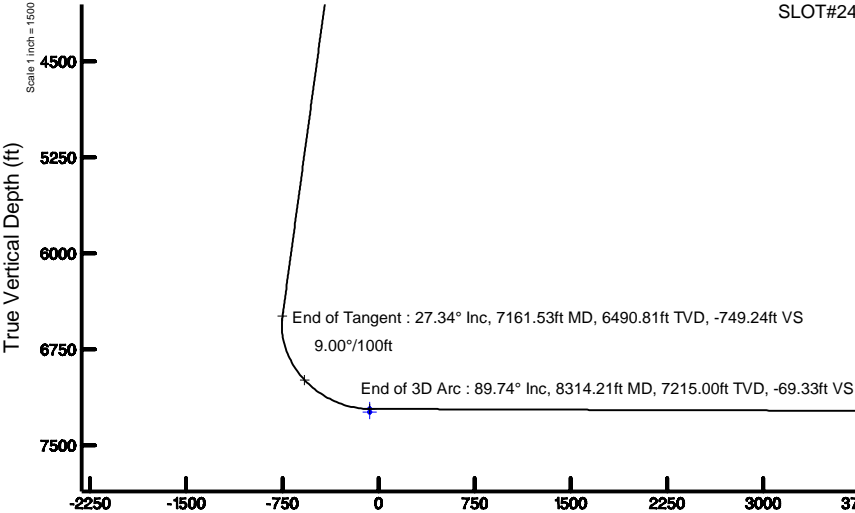
Location: COLORADO	Slot: SLOT#24 BOST FARM 38N-8C-L (2508'FNL & 1056'FWL, SEC.07)
Field: WELD COUNTY (NAD83,TRUE NORTH)	Well: BOST FARM 38N-8C-L
Facility: SEC.07-T05N-R66W	Wellbore: BOST FARM 38N-8C-L PWB
Plot reference wellpath is BOST FARM 38N-8C-L (REV-B.0) PWP	
True vertical depths are referenced to PROPETRO 12 (4) (RKB)	Grid System: NAD83 / Lambert Colorado SP, Northern Zone (501), US feet
Measured depths are referenced to PROPETRO 12 (4) (RKB)	North Reference: True north
PROPETRO 12 (4) (RKB) to Mean Sea Level: 4879 feet	Scale: True distance
Mean Sea Level to Mud line (At Slot: SLOT#24 BOST FARM 38N-8C-L (2508'FSL & 1056'FWL, SEC.07)): 0 feet	Depths are in feet
Coordinates are in feet referenced to Slot	Created by: robiate01 on 2018-10-18
	Database: WA DENVER

Location Information					
Facility Name		Grid East (US ft)	Grid North (US ft)	Latitude	Longitude
SEC.07-T05N-R66W		3187161.591	1394309.789	40°24'49.806"N	104°49'40.249"W
Slot	Local N (ft)	Local E (ft)	Grid East (US ft)	Grid North (US ft)	Latitude
SLOT#24 BOST FARM 38N-8C-L (2508'FNL & 1056'FWL, SEC.07)	295.46	-202.74	3186956.630	1394603.690	40°24'52.726"N
PROPETRO 12 (4) (RKB) to Mud line (At Slot: SLOT#24 BOST FARM 38N-8C-L (2508'FNL & 1056'FWL, SEC.07))					4879ft
Mean Sea Level to Mud line (At Slot: SLOT#24 BOST FARM 38N-8C-L (2508'FSL & 1056'FWL, SEC.07))					0ft
PROPETRO 12 (4) (RKB) to Mean Sea Level					4879ft

Survey Program					
Start MD (ft)	End MD (ft)	Tool	Model	Log Name/Comment	Wellbore
4.00	1750.00	BH1 NavTrak	BH1 NavTrak (Standard)		BOST FARM 38N-8C-L PWB
1750.00	18383.72	BH1 AutoTrak Curve	BH1 AutoTrak Curve (MagCAD+IFR1, Short spacing)		BOST FARM 38N-8C-L PWB



BGGM (1900.0 to 2019.0) Dip: 66.80° Field: 52262 nT
Magnetic North is 8.31 degrees East of True North (at 10/1/2018)
To correct azimuth from Magnetic to True add 8.31 degrees



Targets

Name	MD (ft)	TVD (ft)	Local N (ft)	Local E (ft)	Grid East (US ft)	Grid North (US ft)	Latitude	Longitude
SEC.07-T05N-R66W		3.00	-295.46	202.74	3187161.59	1394309.79	40°24'49.806"N	104°49'40.249"W
SEC.08-T05N-R66W		3.00	-295.46	202.74	3187161.59	1394309.79	40°24'49.806"N	104°49'40.249"W
BOST FARM 38N-8C-L TOP OF PROD REV-1 (84'FSL & 150'FWL, SEC.07)	8314.21	7215.00	-2754.96	-892.03	3186085.52	1391842.17	40°24'25.502"N	104°49'54.401"W
BOST FARM 38N-8C-L BHL ON PLAT (101'FSL & 360'FEL, SEC.08)		7235.00	-2730.64	9177.44	3196154.10	1391942.73	40°24'25.726"N	104°47'44.236"W
BOST FARM 38N-8C-L BPZ ON PLAT (101'FSL & 460'FEL, SEC.08)		7235.00	-2731.04	9077.46	3196054.14	1391941.57	40°24'25.722"N	104°47'45.528"W
BOST FARM 38N-8C-L BHL REV-1 (101'FSL & 360'FEL, SEC.08)	18383.72	7238.00	-2730.60	9177.41	3196154.07	1391942.77	40°24'25.726"N	104°47'44.236"W
BOST FARM 38N-8C-L BPZ REV-1 (101'FSL & 460'FEL, SEC.08)	18283.77	7238.00	-2731.04	9077.46	3196054.14	1391941.57	40°24'25.722"N	104°47'45.528"W
BOST FARM 38N-8C-L TOP OF PROD ON PLAT (84'FSL & 150'FWL, SEC.07)		7242.00	-2754.92	-892.01	3186085.54	1391842.21	40°24'25.502"N	104°49'54.401"W

Hole and Casing Sections

Name	Start MD (ft)	End MD (ft)	Interval (ft)	Start TVD (ft)	End TVD (ft)	Start Local N (ft)	Start Local E (ft)	End Local N (ft)	End Local E (ft)	Wellbore
13.5in Open Hole	4.00	1750.00	1746.00	4.00	1683.85	0.00	0.00	-324.17	-200.37	BOST FARM 38N-8C-L PWB
9.625in Casing Surface	4.00	1750.00	1746.00	4.00	1683.85	0.00	0.00	-324.17	-200.37	BOST FARM 38N-8C-L PWB
8.5in Open Hole	1750.00	18383.72	16633.72	1683.85	N/A	-324.17	-200.37	N/A	N/A	BOST FARM 38N-8C-L PWB

Well Profile Data

Design Comment	MD (ft)	Inc (°)	Az (°)	TVD (ft)	Local N (ft)	Local E (ft)	DLS (°/100ft)	VS (ft)
Tie On	4.00	0.000	211.721	4.00	0.00	0.00	0.00	0.00
End of Tangent	250.00	0.000	211.721	250.00	0.00	0.00	0.00	0.00
End of Build	1617.10	27.342	211.721	1565.80	-272.24	-168.28	2.00	-83.65
End of Tangent	7161.53	27.342	211.721	6490.81	-2438.39	-1507.21	0.00	-749.24
End of 3D Arc	8314.21	89.736	89.978	7215.00	-2754.96	-892.03	9.00	-69.33
End of 3D Arc	18283.77	90.000	89.747	7238.00	-2731.04	9077.46	0.00	9479.35
End of Tangent	18383.72	90.000	89.747	7238.00	-2730.60	9177.41	0.00	9575.02