

Inspection Photos

10/23/2020

Operator: GORDON ENGINEERING INC -
34720

Location ID: 312560
Mesa County, CO

Aaron Trujillo
NW Reclamation Specialist
COGCC

Inspection Photos

Operator Name: GORDON ENGINEERING INC - 34720

Location ID: 312560



Photo 1: Photo taken from the north end of the Location, facing east. Photos 1-4 provide an overview of the Location from east, southeast, southwest to west. Photos show surface equipment has been removed from the Location. Location and access road requiring compaction alleviation, contouring/re-grading, replacement of soils and revegetation activities.



COLORADO
Oil & Gas Conservation
Commission
Department of Natural Resources

Inspection Photos

Operator Name: GORDON ENGINEERING INC - 34720

Location ID: 312560



Photo 2: See comments under photo 1.



COLORADO
Oil & Gas Conservation
Commission
Department of Natural Resources

Inspection Photos
Operator Name: GORDON ENGINEERING INC - 34720
Location ID: 312560



Photo 3: See comments under photo 1.

Inspection Photos
Operator Name: GORDON ENGINEERING INC - 34720
Location ID: 312560



Photo 4: See comments under photo 1.



Inspection Photos

Operator Name: GORDON ENGINEERING INC - 34720

Location ID: 312560



Photo 5: Photo taken ~50 ft. north of the location. Photo shows ~0.11 acres of impacted soils due to what appears to be cement waste discharged/spilled during plugging operations.



Inspection Photos
Operator Name: GORDON ENGINEERING INC - 34720
Location ID: 312560



Photo 6: See comments under photo 5.



Inspection Photos
Operator Name: GORDON ENGINEERING INC - 34720
Location ID: 312560



Photo 7: See comments under photo 5.



Inspection Photos

Operator Name: GORDON ENGINEERING INC - 34720

Location ID: 312560



Photo 8: See comments under photo 5.



COLORADO
Oil & Gas Conservation
Commission
Department of Natural Resources

Inspection Photos
Operator Name: GORDON ENGINEERING INC - 34720
Location ID: 312560



Photo 9: Close up of the impacted soils.



Inspection Photos
Operator Name: GORDON ENGINEERING INC - 34720
Location ID: 312560



Photo 10: See comments under photo 5.



Inspection Photos
Operator Name: GORDON ENGINEERING INC - 34720
Location ID: 312560



Photo 11: Photo taken from where the spill begins ~50 feet north of the Location. Photo shows scoured soils where concentrated fluids appear to have discharged from a hose placed from the Location.

Inspection Photos
Operator Name: GORDON ENGINEERING INC - 34720
Location ID: 312560



Photo 12: Photo taken from the north end of the location, facing north. Photo shows areas leading to the spill (photo 11) where a hose appears to have been laid.



Inspection Photos

Operator Name: GORDON ENGINEERING INC - 34720

Location ID: 312560



Photo 13: Photo taken from the northeast end of the Location, facing east. Photo shows soil stockpile remaining.



COLORADO
Oil & Gas Conservation
Commission
Department of Natural Resources

Inspection Photos
Operator Name: GORDON ENGINEERING INC - 34720
Location ID: 312560



Photo 14: Photo taken from the access road, facing west. Access road requiring compaction alleviation, recontouring/regrading and revegetation activities pursuant to Rule 1004.a.

Inspection Photos

Operator Name: GORDON ENGINEERING INC - 34720

Location ID: 312560



Photo 15: Photo taken from the access road entrance, facing northeast. See comments under photo 14.



COLORADO
Oil & Gas Conservation
Commission
Department of Natural Resources

Inspection Photos
Operator Name: GORDON ENGINEERING INC - 34720
Location ID: 312560



Photo 16: Aerial image of the Location collected date-of-inspection via a sUAS. Photo shows spill area/impacted soils on the north end of the location. Area measuring ~0.11 acres in size.

Inspection Photos
Operator Name: GORDON ENGINEERING INC - 34720
Location ID: 312560

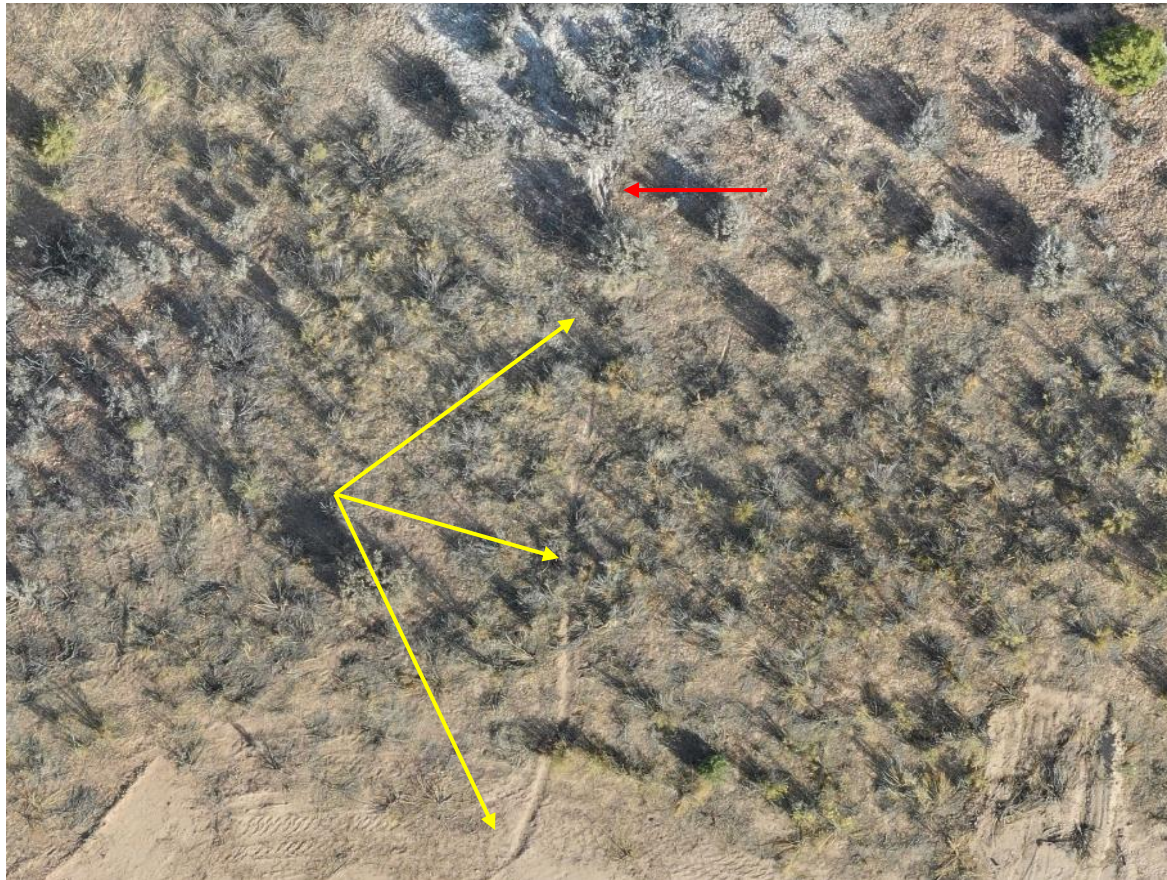


Photo 17: Continued from photo 16. Photo shows hose trail (yellow arrows, photo 12) leading from the north end of the location to the area where spill begins (red arrow), photo 11

Inspection Photos
Operator Name: GORDON ENGINEERING INC - 34720
Location ID: 312560



Photo 18: 2019 USGS Aerial imagery. Photo shows impacted soils are not evident prior to plugging operations.

