



Service Order #: 85532

Date: 26-Sep-20

Well Name	Location	County	St	API#		
FEDERAL 1 SEC 28		WELD	CO	05-123-05519		
Formation	Cement Via	Type Of Service	Well Type	Age	AFE#	PO#
	TUBING	PLUG				

Customer: BISON OIL & GAS

Remarks: 160.0SK/32.8BBLs TD @ 6207' - TOC 5773'  
 80.0SK/16.4BBLs TD @ 4714' - TOC 4533'  
 80.0SK/16.4BBLs TD @ 3956' - TOC 3815'  
 80.0SK/16.4BBLs TD @ 1714' - TOC 1415'  
 100.0SK/20.5BBLs TD @ 628' - TOC 615'  
 450.0SK/91.8BBLs TD @ 615' - TOC 218'  
 95.0SK/19.5BBLs TD @ 218' - TOC 0'  
 10.0SK/2.0BBL TOPOFF

Customer Rep: GARY/BRAD

PH:

WELLBORE DATA				
Type	Size	Weight	Depth	Volume
Surface Casing:	8.625			
Production Casing:				
Intermediate:				
Drill Pipe:				
Tubing:	2.875			

Type	Size	Depth (Top)	Depth (Bot)	Volume
Liner:				
Open Hole:	7.875			

OTHER DATA		
BHT	Max PSI	Total Depth

Packer or RetainerType / Depth:

Perf Depths:	#	Total
	0	0
	0	
	0	

TIME	PUMP RATES		DENSITY	PRESS	STG TOT	TOTAL	REMARKS
	WATER (gpm)	PUMP (bpm)	(lb/gal)	(psi)	(bbls)	(bbls)	
19:57	0	0.0	7.04	117	0.1	0.1	START WATER
20:03	0	2.0	15.63	348	8.9	8.9	END WATER/ START CEMENT
20:15	51	3.0	10.70	84	32.8	41.9	END CEMENT/ START WATER
20:15	0	3.0	8.31	53	1.0	43.5	END WATER/ START MUD
20:25	0	0.1	8.12	0	31.6	75.3	END MUD
2:24	0	1.1	15.88	17	0.0	7.4	START WATER
2:28	0	2.6	15.65	459	8.8	16.2	END WATER/ START CEMENT
2:34	0	2.9	8.53	84	16.4	32.7	END CEMENT/ START WATER
2:35	0	2.9	7.91	105	1.0	34.3	END WATER/ START MUD
2:43	0	0.9	7.96	6	24.6	59.0	END MUD
7:54	0	0.0	6.89	94	0.1	0.1	START WATER
7:59	0	2.5	15.43	482	8.9	8.9	END WATER/ START CEMENT
8:05	0	2.8	12.60	96	16.4	25.5	END CEMENT/ START WATER
8:06	42	2.8	8.86	53	1.0	27.9	END WATER/ START MUD
8:13	0	0.2	7.15	6	20.2	48.3	END MUD
14:03	0	0.0	6.88	0	0.0	0.0	START WATER
14:09	0	2.5	15.88	369	8.8	8.8	END WATER/ START CEMENT
14:15	0	2.8	9.07	82	16.3	25.2	END CEMENT/ START WATER
14:15	162	2.8	8.66	29	1.0	26.7	END WATER/ START MUD
14:18	0	0.0	6.88	112	7.3	34.1	END MUD
20:50	0	0.0	6.88	24	0.0	0.0	START WATER
21:00	0	2.3	16.19	145	20.0	20.0	END WATER/ START CEMENT
21:09	0	2.4	10.05	84	20.4	41.0	END CEMENT/ START WATER
21:10	0	0.8	8.17	24	1.6	43.3	END WATER

Customer Acknowledgement:

Service Rating:

- ☐ Satisfactory  
☐ Unsatisfactory

Cementer:

JEREMIE

PRODUCTS USED

15.8#G, 1.15Y, 4.99GAL/SK  
 FLUID/MUD PROVIDED BY CUSTOMER



Service Order #: 85532

Date: 26-Sep-20

2:15	0	2.1	7.30	158	1.7	1.7	START WATER
2:22	0	2.5	15.90	200	20.0	20.0	END WATER/ START CEMENT
3:00	0	2.1	9.16	103	91.8	112.0	END CEMENT
8:19	0	0.0	6.88	24	45.3	157.3	START WATER
8:30	38	1.0	16.07	24	15.0	15.0	END WATER/ START CEMENT
8:39	0	2.5	9.58	121	19.5	34.7	END CEMENT

**Summary**

Max Fl. Rate	Avg Fl. Rate	Max Psi	Avg Psi
3.0	0.9	2,462	151

Customer Acknowledgement:

Service Rating:

- ☐ Satisfactory  
☐ Unsatisfactory

Cementer:

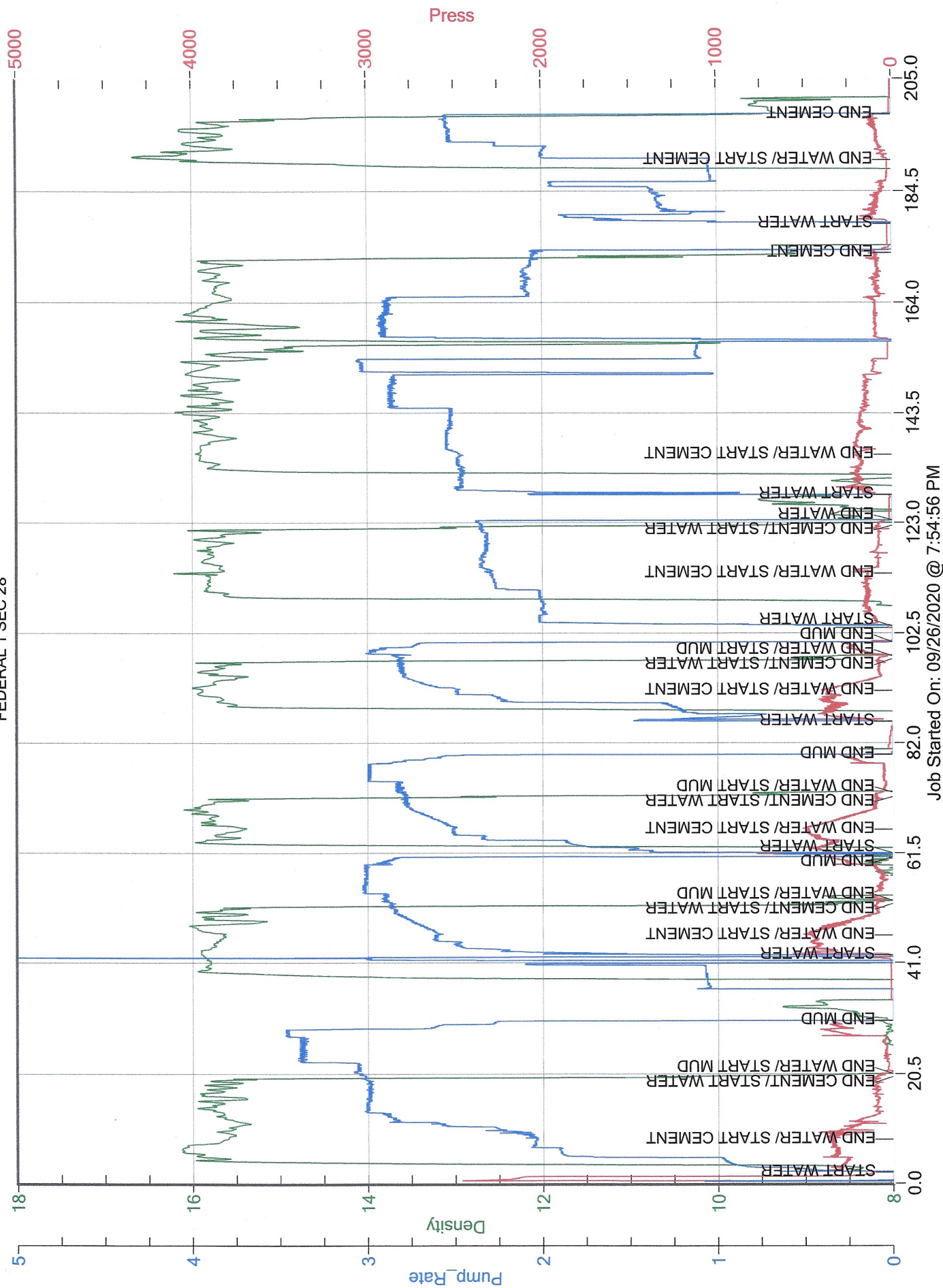
JEREMIE

**PRODUCTS USED**

15.8#G, 1.15Y, 4.99GAL/SK  
FLUID/MUD PROVIDED BY CUSTOMER

# BISON OIL & GAS

FEDERAL 1 SEC 28



Job Started On: 09/26/2020 @ 7:54:56 PM