

Inspection Photos

API#045-06593

Operator: Chevron

Inspection Number: 692400010

Inspection Date: 7/25/2018



COLORADO
Oil & Gas Conservation
Commission
Department of Natural Resources



Photo#1:
GE Aerial view of Location.

July 25, 2018



COLORADO
Oil & Gas Conservation
Commission
Department of Natural Resources

Inspection Photos: Chevron PA Shale API#045-06593



Photo#2:

Overview of Location from entry to North. Insert of Mullein plant that had been treated.

July 25, 2018



COLORADO
Oil & Gas Conservation
Commission
Department of Natural Resources

Inspection Photos: Chevron PA Shale API#045-06593



Photo#3:
Overview of Location from top of Cut to South

July 25, 2018



COLORADO
Oil & Gas Conservation
Commission
Department of Natural Resources

Inspection Photos: Chevron PA Shale API#045-06593



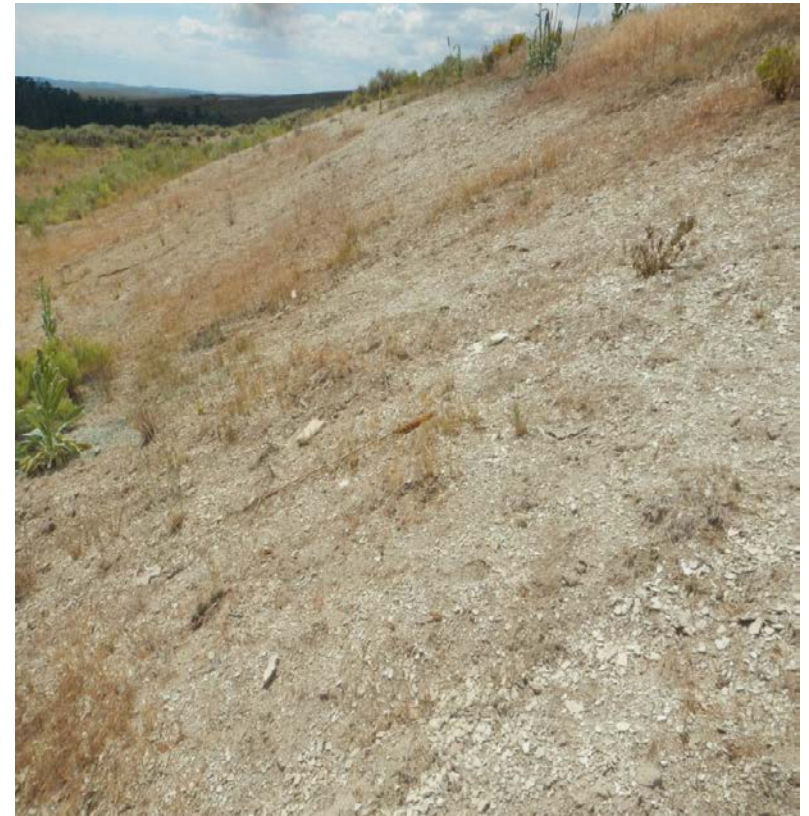
Photo#4:
Portions of Pad and Fill Slope that have re-vegetated.

July 25, 2018



Photo#5:
Bermed (topsoil) appears to be used for livestock access and loafing area.

July 25, 2018



Photo#6:
View along Cut Slope.



Photo#7:

Aerial showing Four Chevron Variance Requests. Subject Well #1 Balloon.

July 25, 2018