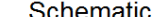
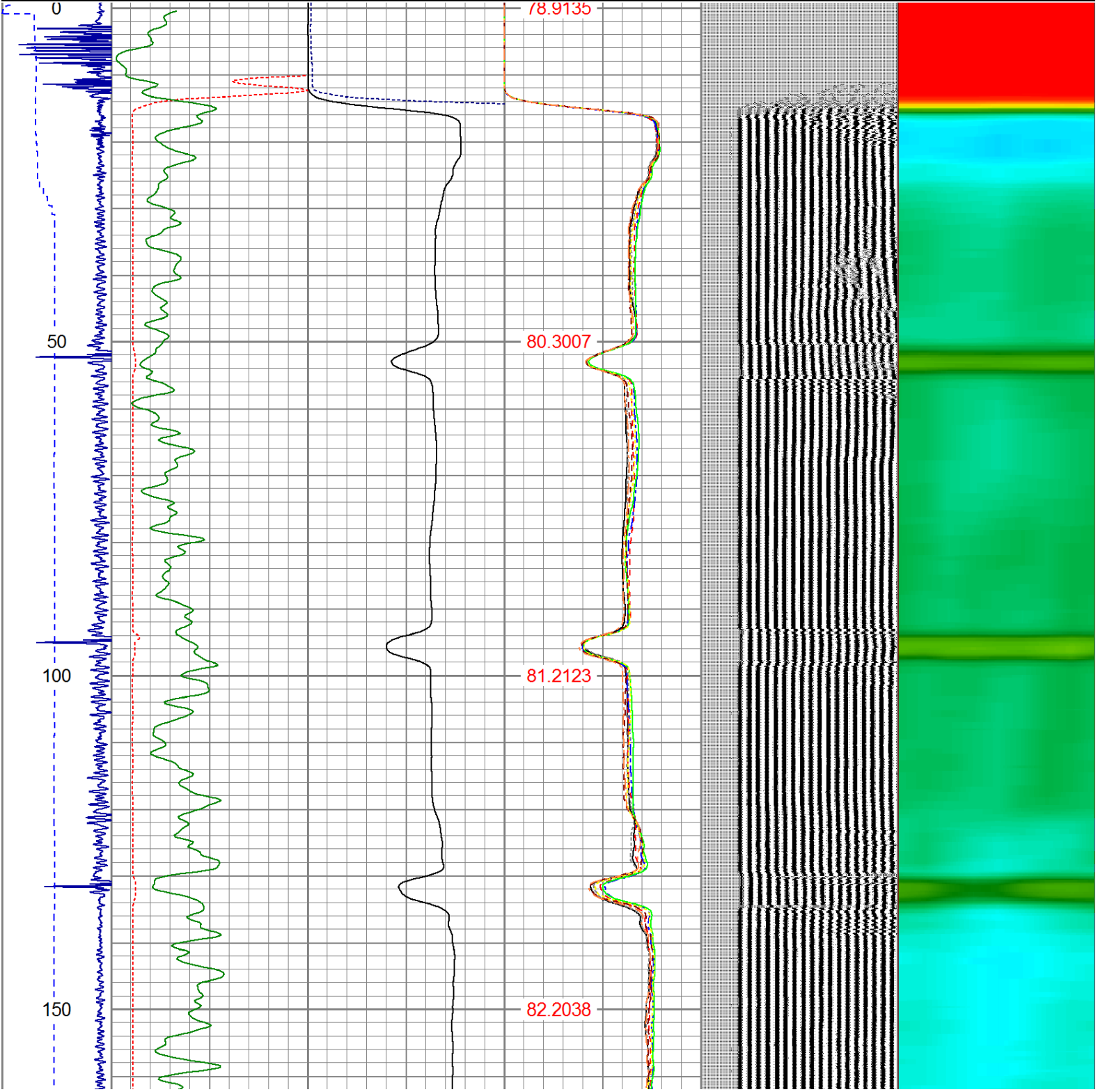


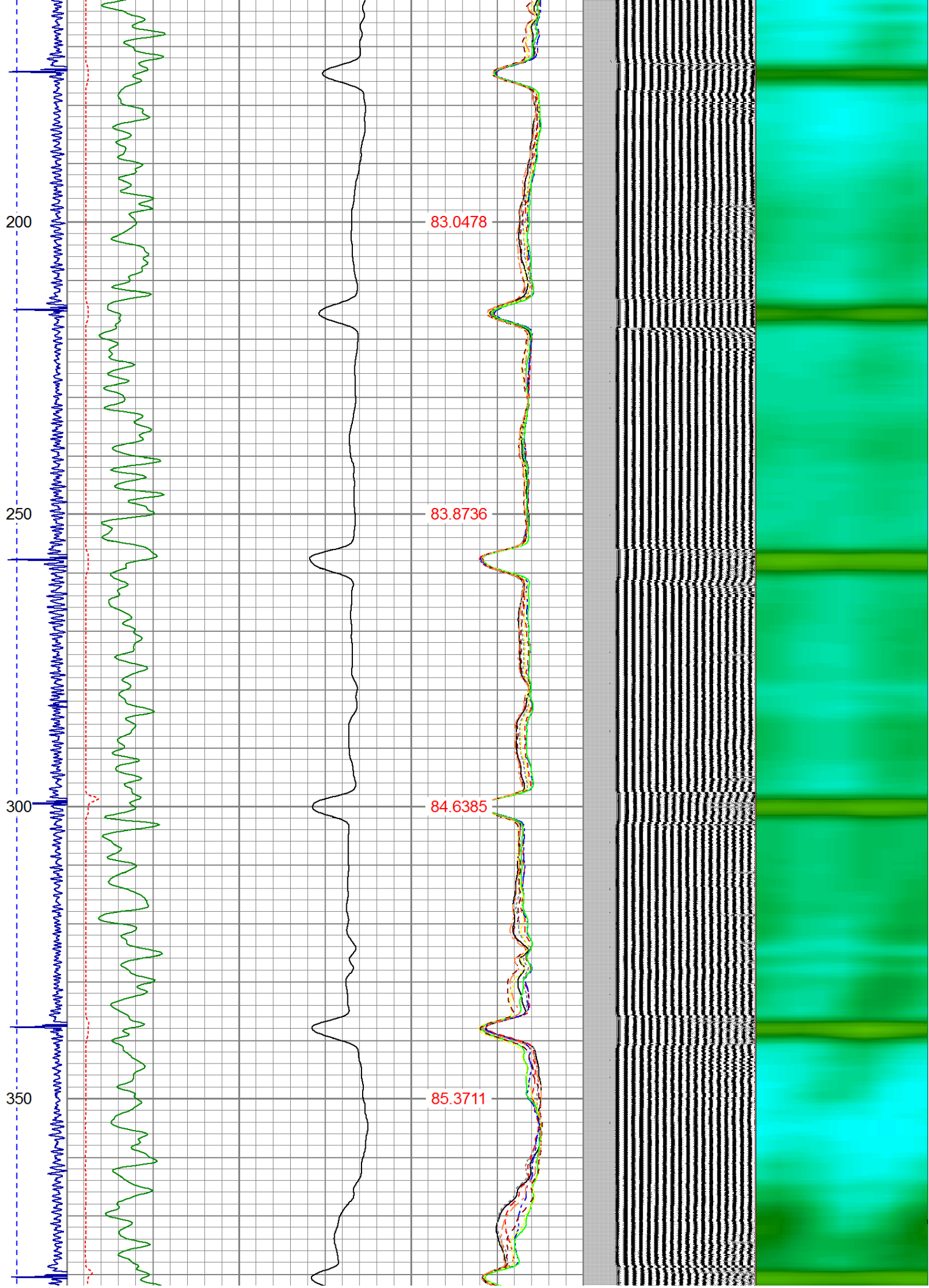
RAN CBL TO VERIFY CEMENT BOND
CORRELATED TO SUPERIOR CBL RAN ON SEPT. 29, 2011

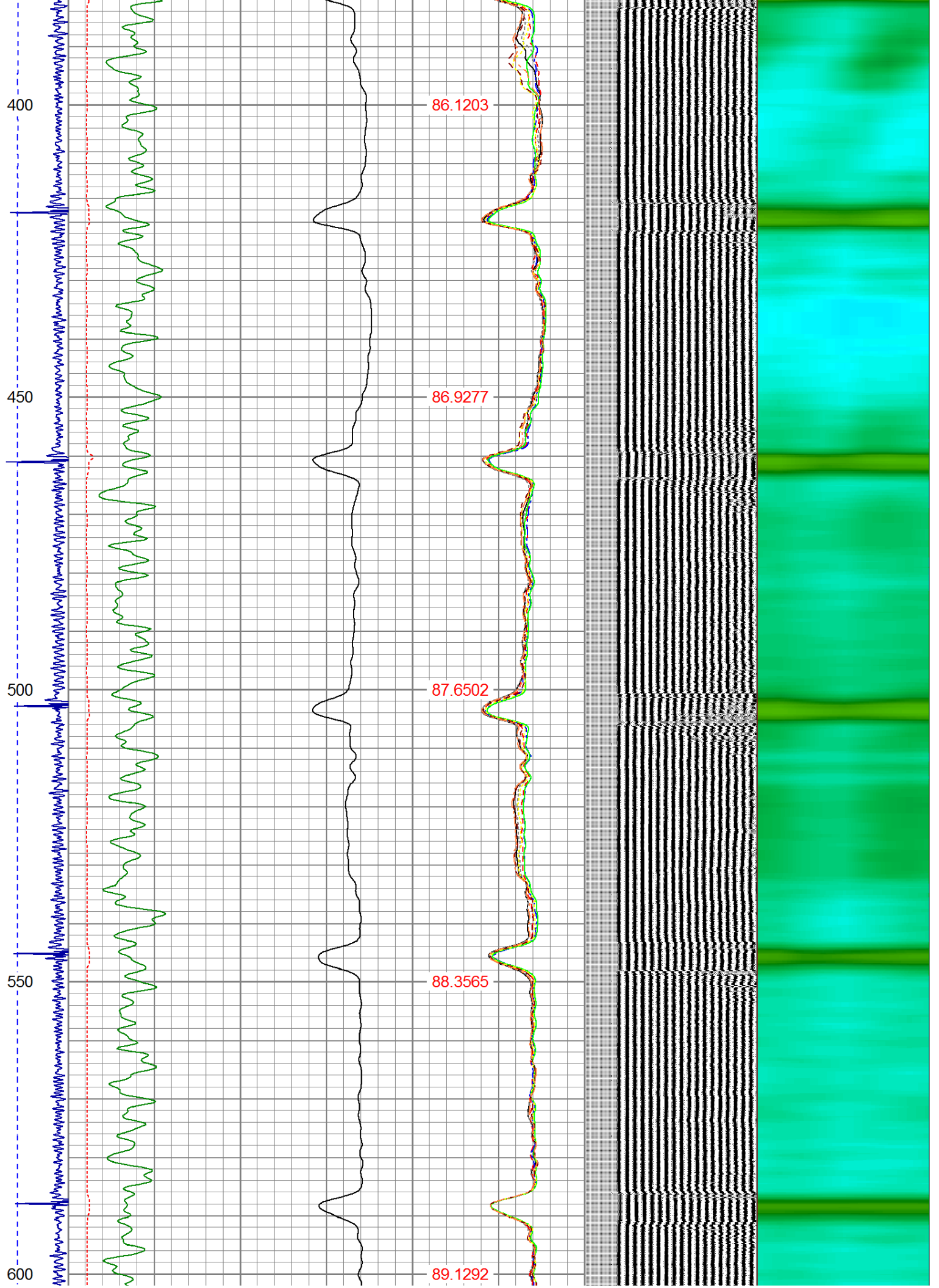
Sensor	Offset (ft)	Schematic	Description	Len (ft)	OD (in)	Wt (lb)
HEADVOLT	16.12		1_4	1.00	1.36	5.00

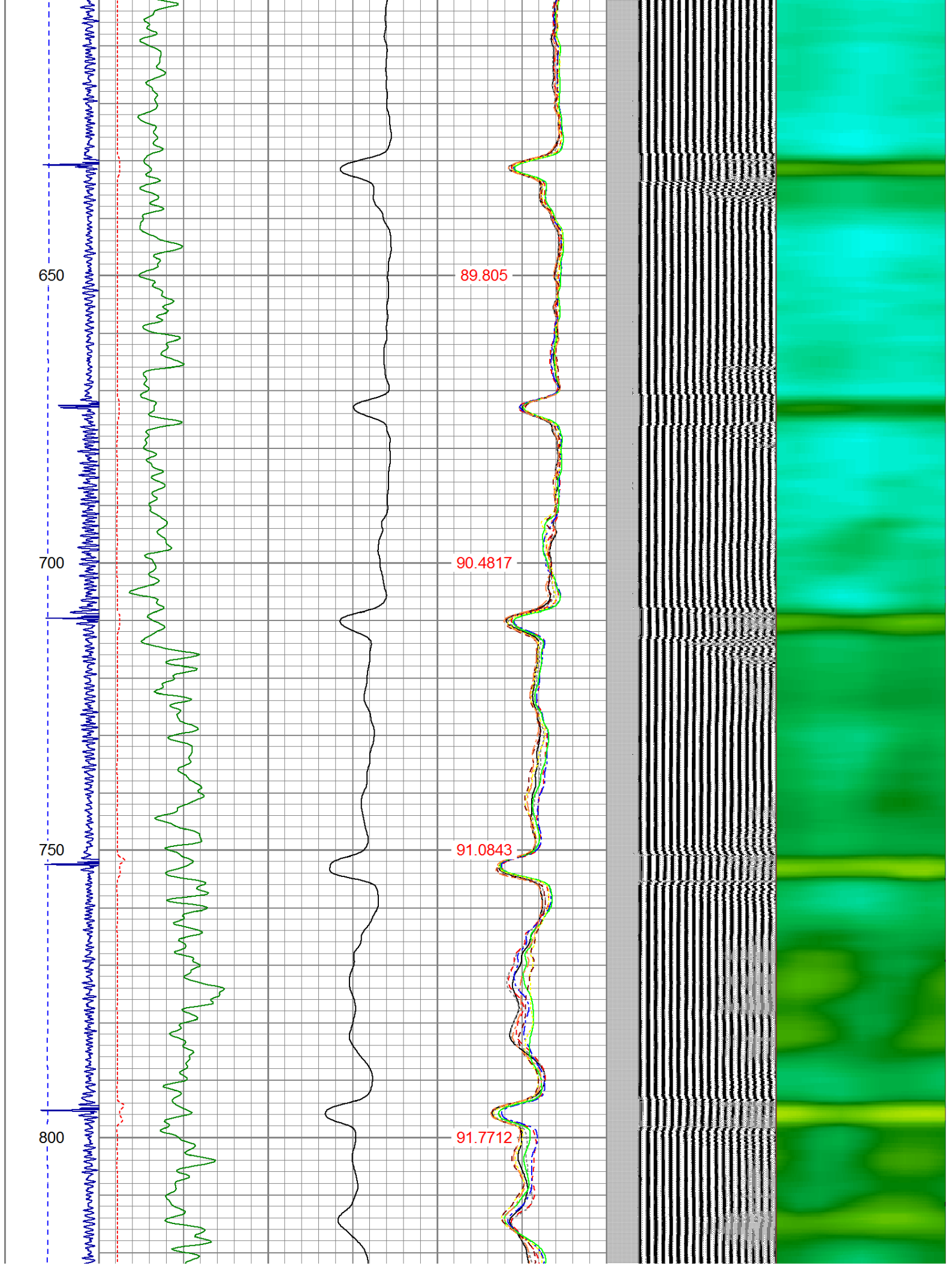
HEADVOLT	10.15					
IntTemp	14.71					
WVF3FT	11.46		RBT-Probe (Base) Probe Radii Bond Tool with Digital Telemetry	8.92	2.75	90.00
WVFCAL	11.46					
WVFS1	11.46					
WVFS2	11.46					
WVFS3	11.46					
WVFS4	11.46					
WVFS5	11.46					
WVFS6	11.46					
WVFS7	11.46					
WVFS8	11.46					
WVF5FT	10.46					
CNLSC	6.00		CNT-Probe_B (275) 6 bow centralizer	2.88	2.75	40.00
CNSSC	5.17					
CCL	3.64					
GR	0.90		GR-Probe (275) Probe 2.75"	4.33	2.75	30.00
Dataset: boiko pc g15-29d.db: field/well/run1/pass34 Total Length: 17.13 ft Total Weight: 165.00 lb O.D. 2.75 in						

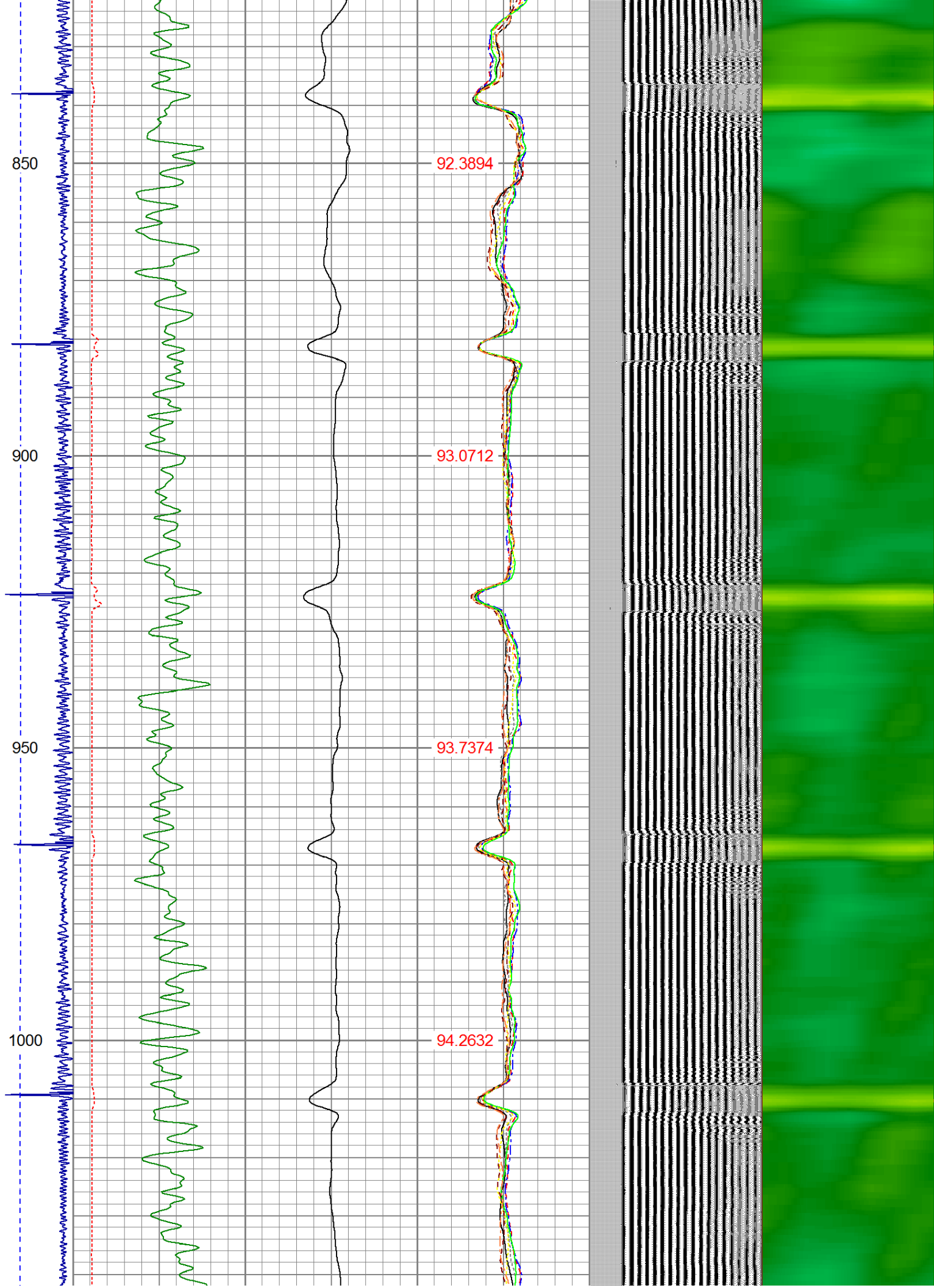
Dataset Creation: Wed Mar 11 11:38:30 2020 by Log SCH 120126																																
Charted by: Depth in Feet scaled 1:240																																
-9	CCL	1	200	TT (usec)	800	0	AMP (mV)	100	0	AMPS1	100	200	VDL	1200	1	Cement Map	8															
LSPD (ft/min)	0		0	GR (GAPI)	200	0	AMPx5 (mV)	20	0	AMPS2	100					1		100														
	200		200	GR (GAPI)	400				0	AMPS3	100																					
									0	AMPS4	100																					
									0	AMPS5	100																					
									0	AMPS6	100																					
									0	AMPS7	100																					
									0	AMPS8	100																					
											IntTemp																					
											(degF)																					

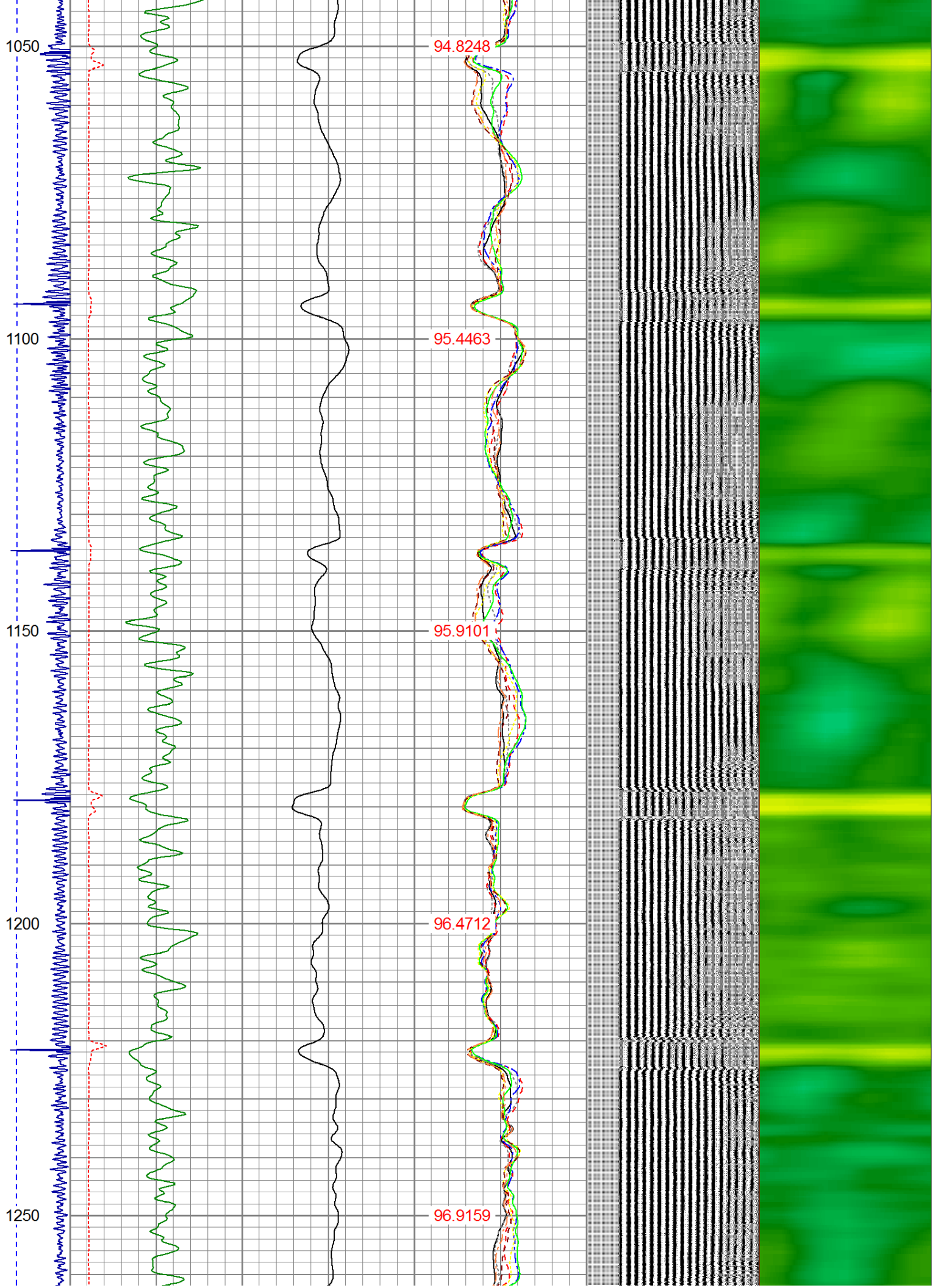


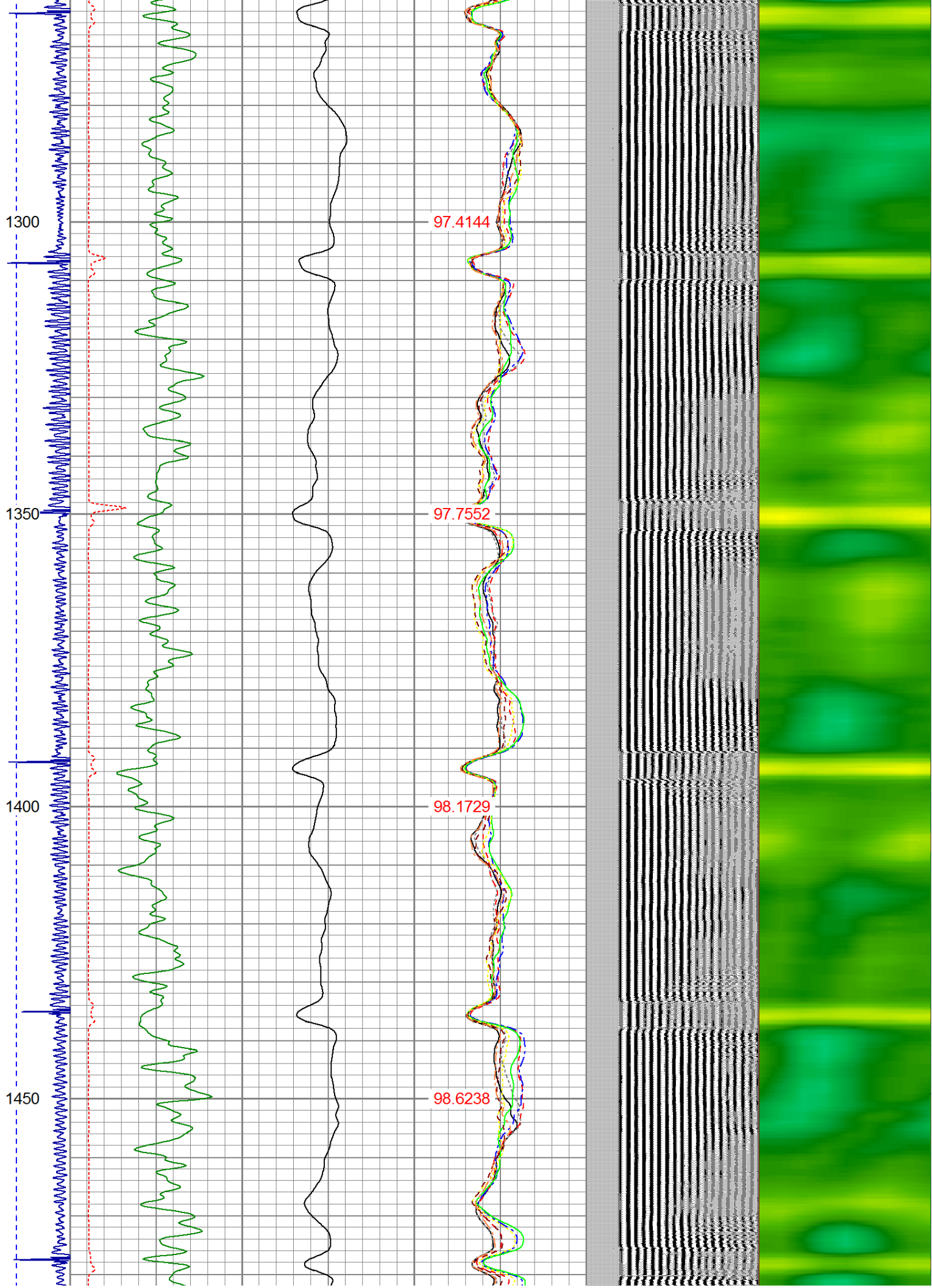


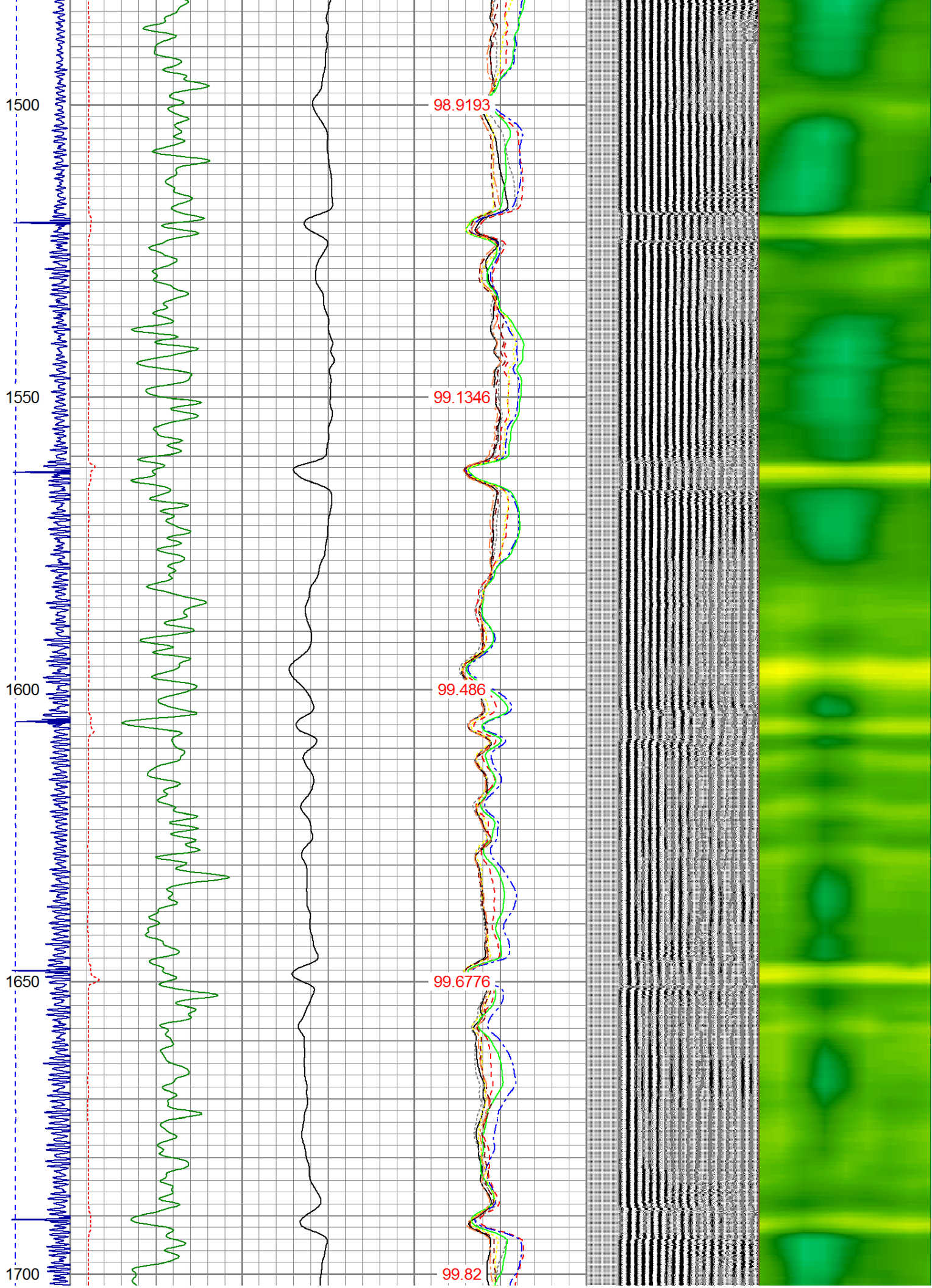


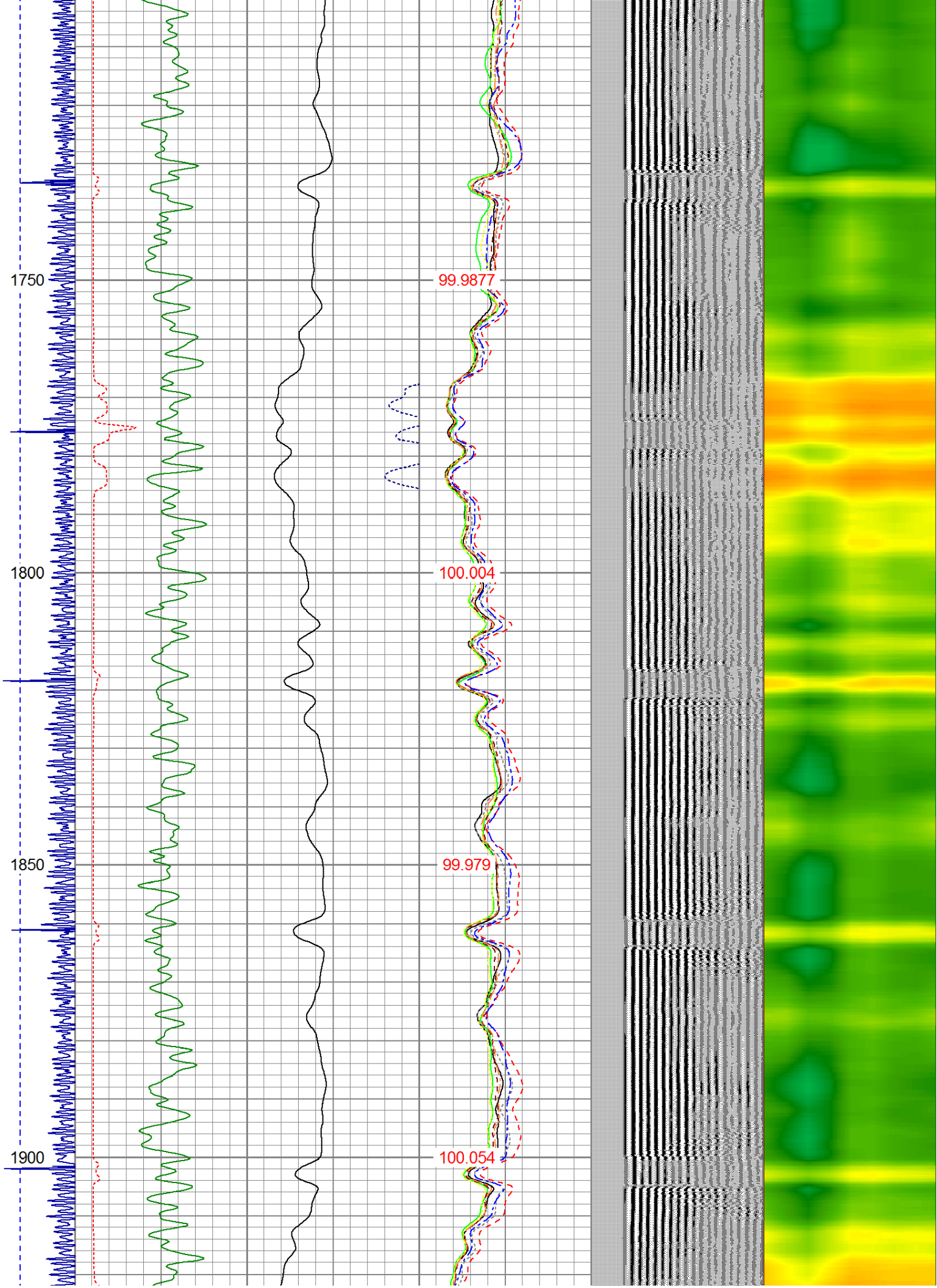


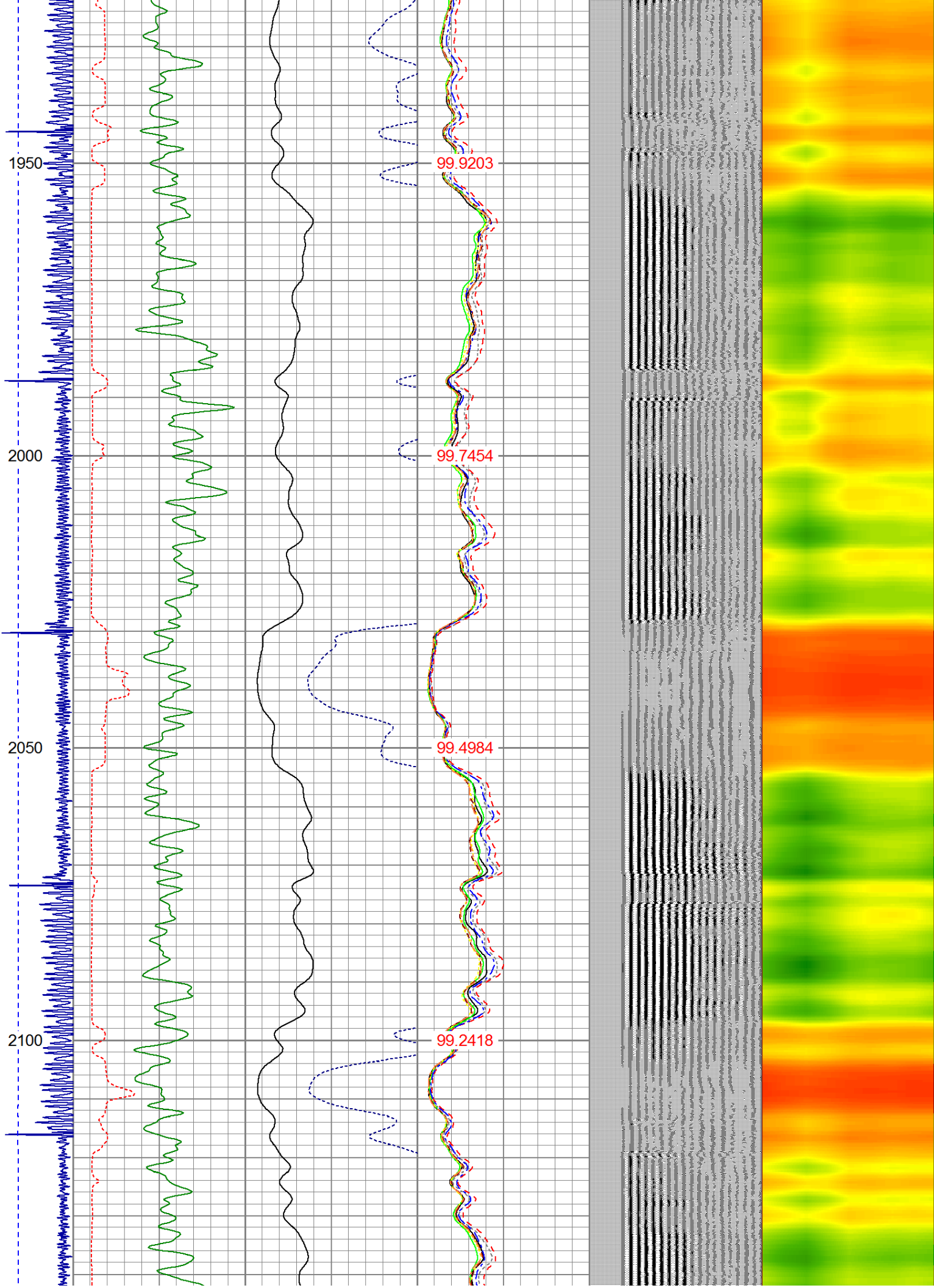


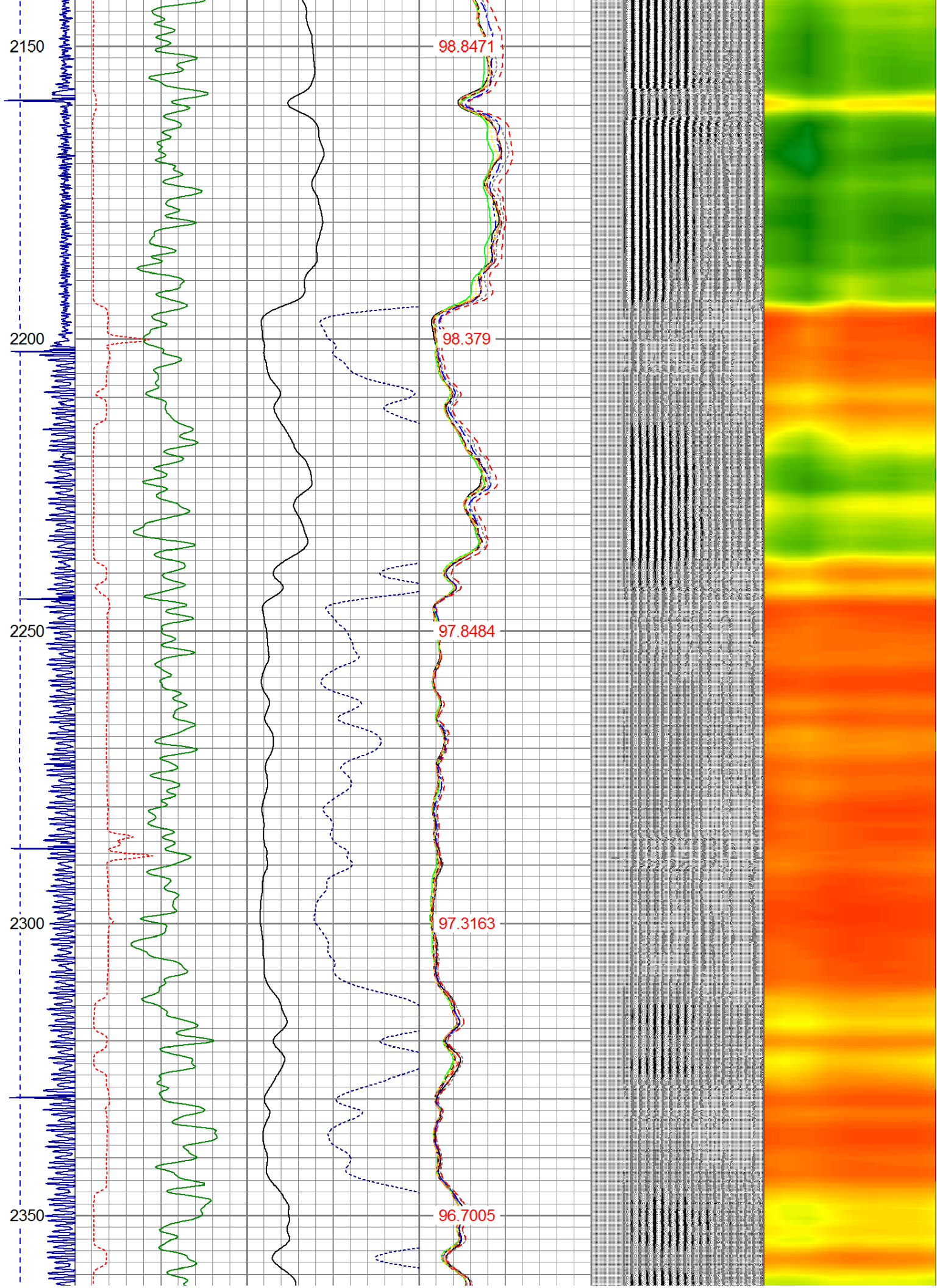


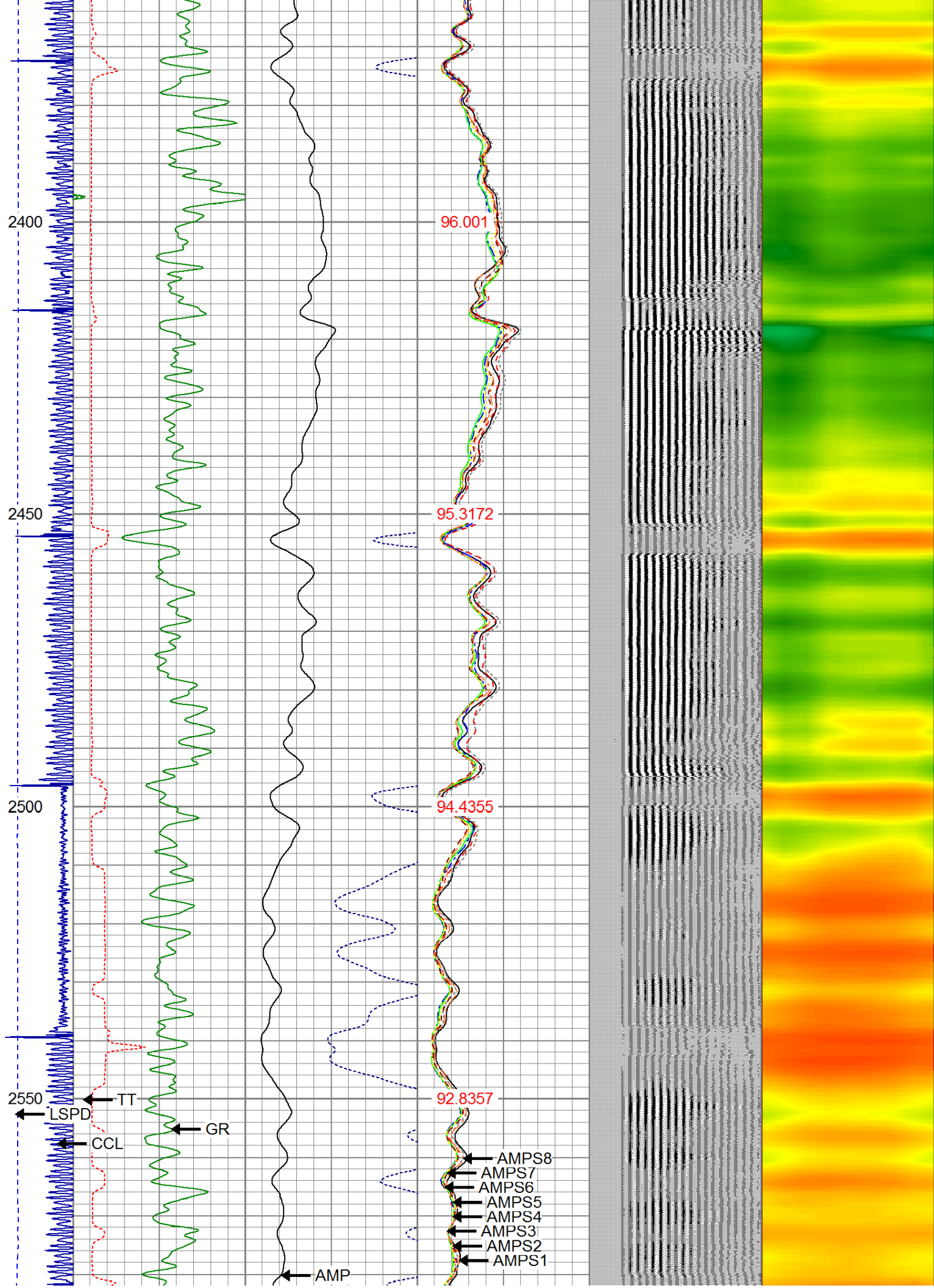


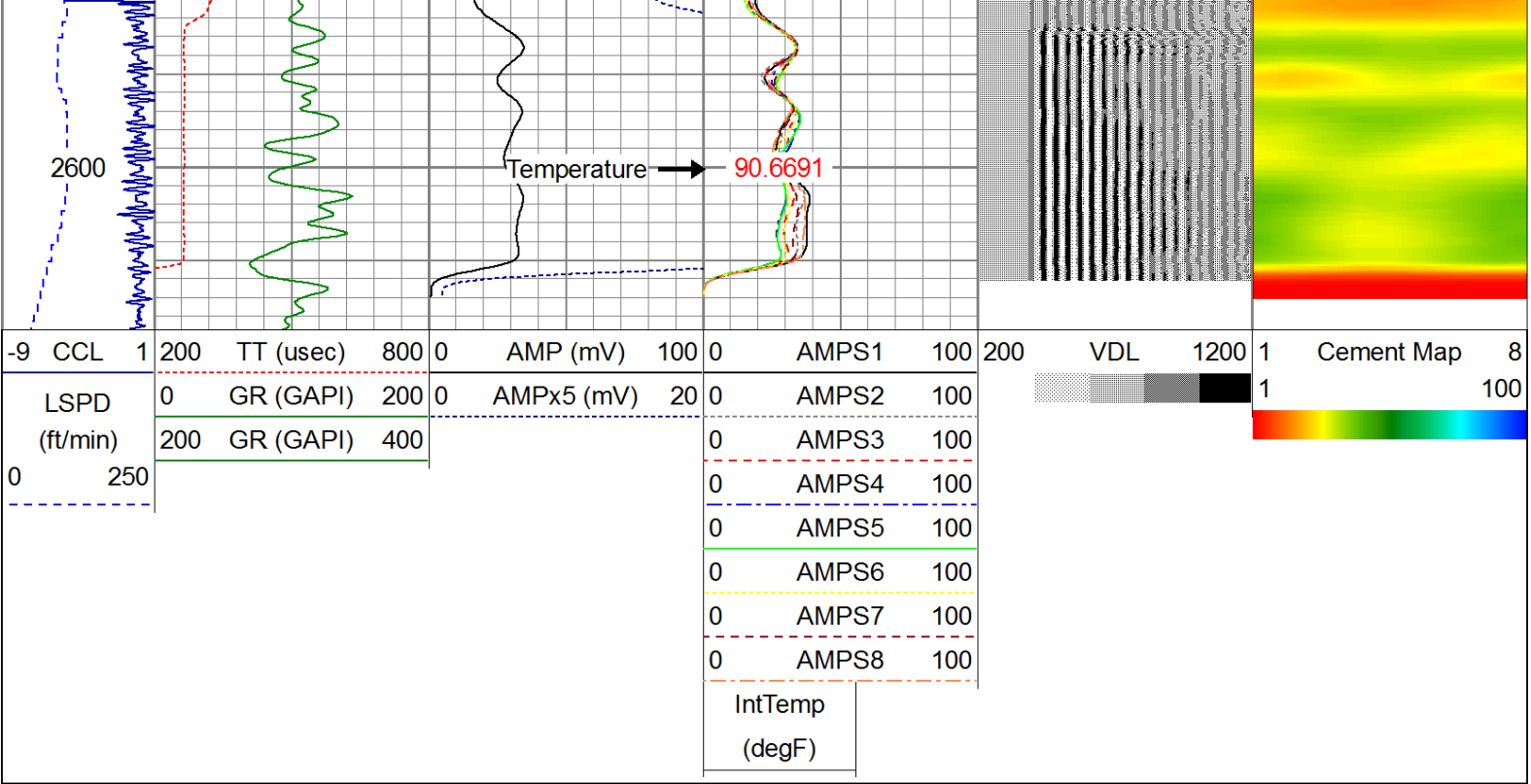












Well Services
E - L I N E

Company NOBLE ENERGY
Well BOIKO PC #G15-29D
Field WATTENBERG
County WELD
State COLORADO