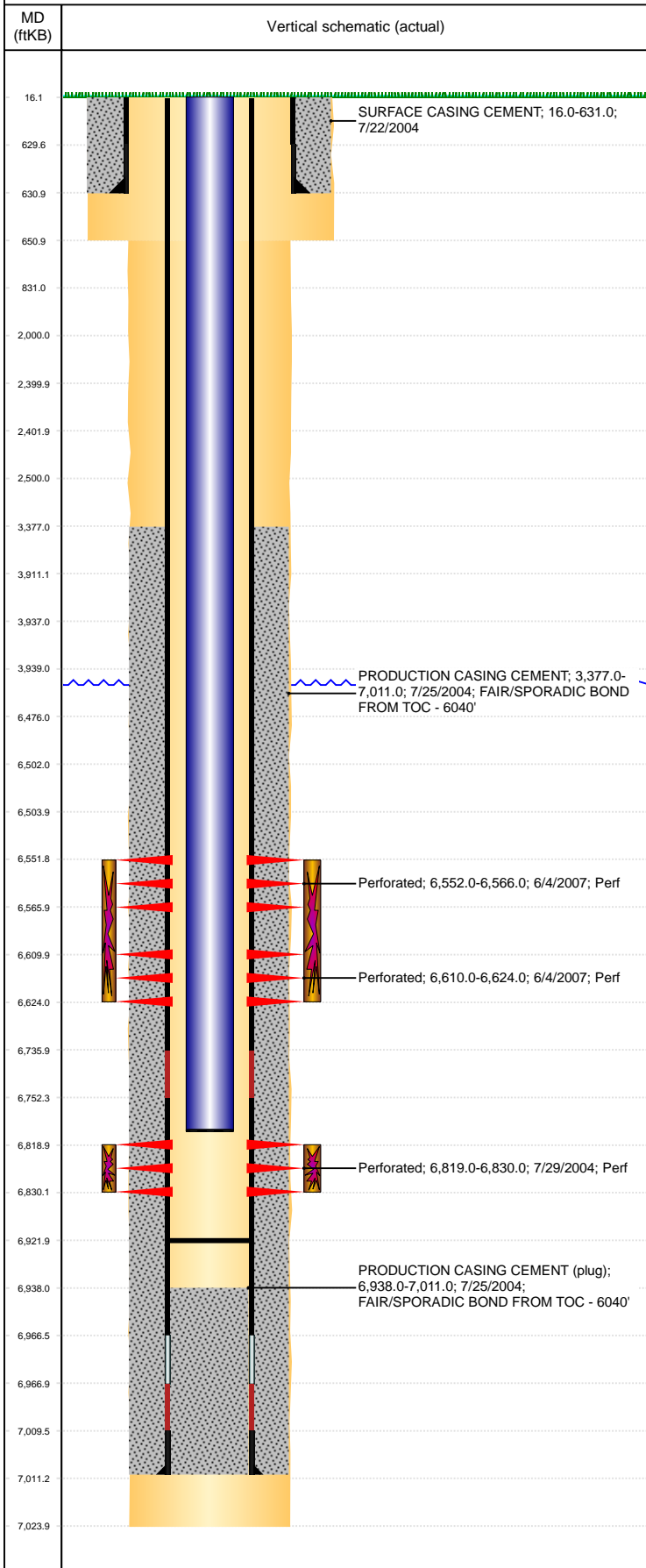


**Well Name: ABBEY D01-04**

VERTICAL, ORIGINAL HOLE, 10/25/2020 9:48:31 PM



Well Header									
API 05-123-22185		Business Unit DJ BASIN			District 15		Well Config VERTICAL		
KB - GL / MSL (ft... 16.00		Spud Date 7/21/2004		P & A Date		Well Production Status PR			SoRT No
Comment DRILL OUT CIBP, PUSH TO 6922', 91' RAT HOLE.									
Surface Location (Congressional)									
Qtr 3 NW	Qtr 4 NW	Section 1	Twnshp 3	Twنش... N	Range 64	Rng E/... W	Actual Latitude (°) 40.25992937	Actual Longitude (°) -104.50655717	
Wellbore Sections									
Section Des			Size (in)			Act Top, MD (ftKB)		Act Btm, MD (ftKB)	
SURFACE			12 1/4			16		651	
PRODUCTION			7 7/8			651		7,024	
Casing Strings									
Csg Des			Run Date		OD (in)	Wt/Len (lb/ft)	Grade	Top, MD (ftKB)	MD (ftKB)
Surface			7/22/2004		8 5/8	24.00	J-55	16.0	631.0
Production			7/25/2004		4 1/2	11.60	M-80	16.0	7,011.0
Cement									
Des					Start Date		Top (ftKB)		Btm (ftKB)
SURFACE CASING CEMENT					7/22/2004		16.0		631.0
PRODUCTION CASING CEMENT					7/25/2004		3,377.0		7,011.0
Zone Statuses									
Zone Name		Status Date	Status	Fluid Type	Job			Prod Method	
NIOBRARA		6/20/2007	PR		RECOMPLETION, 5/31/2007 00:00			Flowing	
NIOBRARA		7/17/2007	PR		RECOMPLETION, 5/31/2007 00:00			Flowing	
CODELL		8/7/2004	PR		DRILLING/COMPLETION - ORIGINAL, 7/21/2004...			Flowing	
CODELL		7/17/2007	PR		RECOMPLETION, 5/31/2007 00:00			Flowing	
Perforation Data									
Linked Zone			Bnch/Stg	Entered Shot Total	Top (ftKB)		Btm (ftKB)		Date
NIOBRARA, ORIGINAL HOLE				56	6,552.00		6,566.00		6/4/2007
NIOBRARA, ORIGINAL HOLE				56	6,610.00		6,624.00		6/4/2007
CODELL, ORIGINAL HOLE				44	6,819.00		6,830.00		7/29/2004
Stimulation Intervals									
Zone				Start Date		Top (ftKB)		Btm (ftKB)	
NIOBRARA, ORIGINAL HOLE				6/19/2007		6,552.0		6,624.0	
CODELL, ORIGINAL HOLE				8/4/2004		6,819.0		6,830.0	
Other In Hole									
Run Date		Des			Make		OD (in)	Top (ftKB)	Btm (ftKB)
Logs									
Date		Type				Top, MD (ftKB)		Btm, MD (ftKB)	
7/25/2004		COMPENSATED DENSITY				4,600.0		6,989.0	
7/25/2004		INDUCTION				631.0		7,009.0	
7/27/2004		CEMENT BOND				3,130.0		6,935.0	
8/5/2020		GYRO				100.0		6,700.0	
Plug Back Total Depths									
Date		Type			Com				Depth (ftKB)
7/27/2004		FILL			DEPTH LOGGER ON CBL				6,938.0
7/17/2007		PLUG REMNANTS			DRILL CIBP FREE, PUSH TO 6922'				6,922.0