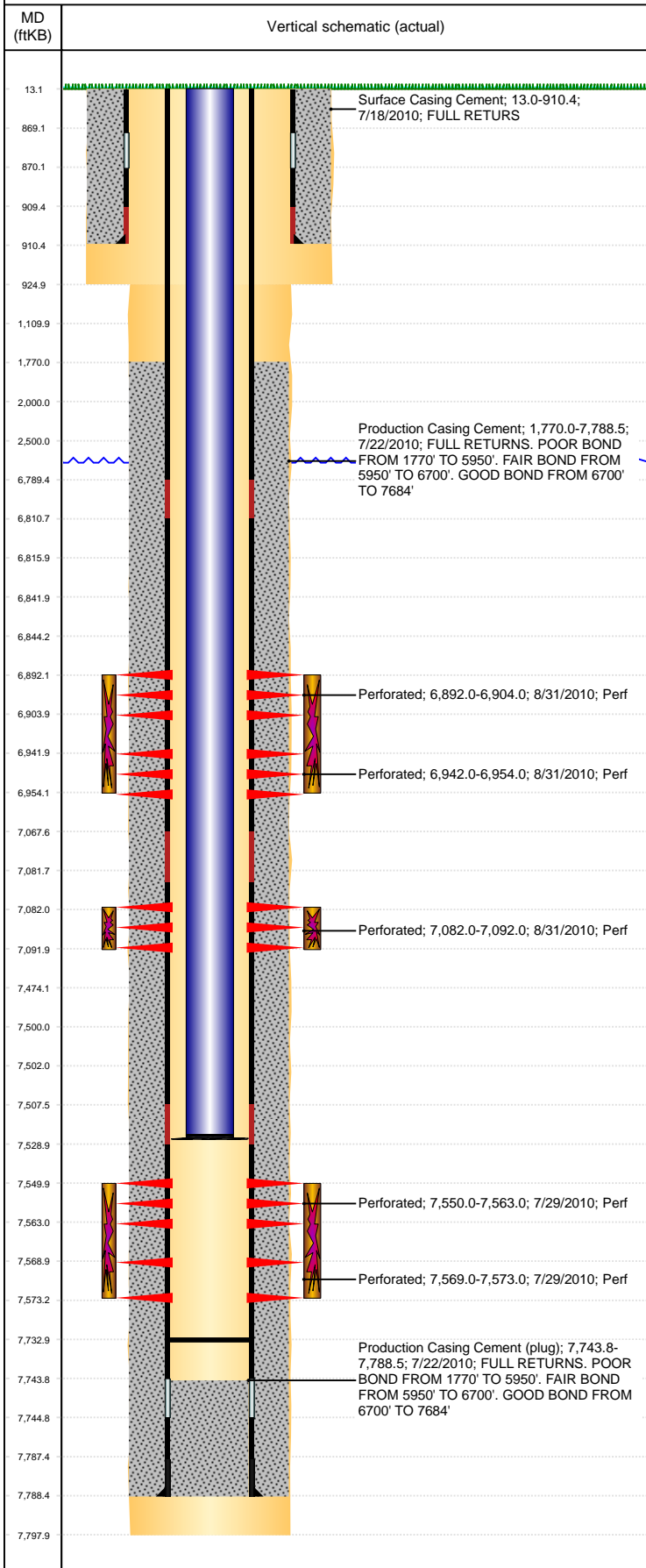


**Well Name: HP FARMS Y17-04**

VERTICAL, ORIGINAL HOLE, 10/25/2020 5:06:20 PM



Well Header										
API 05-123-30872			Business Unit DJ BASIN			District 15		Well Config VERTICAL		
KB - GL / MSL (ft... 13.00		Spud Date 7/18/2010		P & A Date		Well Production Status PR			SoRT No	
Comment										
Surface Location (Congressional)										
Qtr 3 NW	Qtr 4 NW	Section 17	Twnshp 2	Twنش... N	Range 64	Rng E/... W	Actual Latitude (°) 40.14426347		Actual Longitude (°) -104.58191390	
Wellbore Sections										
Section Des			Size (in)			Act Top, MD (ftKB)		Act Btm, MD (ftKB)		
SURFACE			12 1/4			13		925		
PRODUCTION			7 7/8			925		7,798		
Casing Strings										
Csg Des			Run Date		OD (in)	Wt/Len (lb/ft)	Grade	Top, MD (ftKB)	MD (ftKB)	
Surface			7/18/2010		8 5/8	24.00	J-55	13.0	910.4	
Production			7/22/2010		4 1/2	11.60	M-80	13.0	7,788.5	
Cement										
Des					Start Date		Top (ftKB)		Btm (ftKB)	
Surface Casing Cement					7/18/2010		13.0		910.4	
Production Casing Cement					7/22/2010		1,770.0		7,788.5	
Zone Statuses										
Zone Name		Status Date		Status	Fluid Type	Job			Prod Method	
CODELL		9/14/2010		PR		DRILLING/COMPLETION - ORIGINAL, 7/17/2010...			Flowing	
CODELL		9/16/2010		PR						
NIOBRARA		9/14/2010		PR		DRILLING/COMPLETION - ORIGINAL, 7/17/2010...			Flowing	
NIOBRARA		9/16/2010		PR						
J SAND		9/16/2010		PR		DRILLING/COMPLETION - ORIGINAL, 7/17/2010...				
J SAND		12/15/2016		PR						
Perforation Data										
Linked Zone			Bnch/Stg	Entered Shot Total	Top (ftKB)		Btm (ftKB)		Date	
NIOBRARA, ORIGINAL HOLE			B	24	6,892.00		6,904.00		8/31/2010	
NIOBRARA, ORIGINAL HOLE			C	24	6,942.00		6,954.00		8/31/2010	
CODELL, ORIGINAL HOLE				40	7,082.00		7,092.00		8/31/2010	
J SAND, ORIGINAL HOLE				52	7,550.00		7,563.00		7/29/2010	
J SAND, ORIGINAL HOLE				16	7,569.00		7,573.00		7/29/2010	
Stimulation Intervals										
Zone				Start Date		Top (ftKB)		Btm (ftKB)		
NIOBRARA, ORIGINAL HOLE				8/31/2010		6,892.0		6,954.0		
CODELL, ORIGINAL HOLE				8/31/2010		7,082.0		7,092.0		
J SAND, ORIGINAL HOLE				8/31/2010		7,550.0		7,573.0		
Other In Hole										
Run Date		Des			Make		OD (in)	Top (ftKB)	Btm (ftKB)	
Logs										
Date		Type					Top, MD (ftKB)		Btm, MD (ftKB)	
7/21/2010		SPECTRAL GAMMA RAY					910.0		7,792.0	
7/21/2010		SPECTRAL DENSITY/Pe/DSN					910.0		7,792.0	
		NEUTRON/SP/ARRAY								
		COMPENSATED TRUE								
		RESISTIVITY/6 ARM CALIPER								
7/27/2010		CBL/CCL/GR					1,650.0		7,684.0	
7/9/2018		GYRO					13.0		7,400.0	
Plug Back Total Depths										
Date		Type			Com				Depth (ftKB)	
7/27/2010		FILL			FILL				7,691.0	
11/9/2010		PLUG REMNANTS			160' RATHOLE.				7,733.0	