

Bison Oil & Gas II, LLC

WELD COUNTY, COLORADO (NAD 83)

ROSS 8-60 18 SESW & SWSE SEC 18 T8N R60W 6th P.M.

ROSS 8-60 18-7-11

Wellbore #1

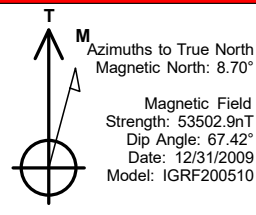
Plan: Design #1

Standard Survey Report

01 September, 2020



Project: WELD COUNTY, COLORADO (NAD 83)
Site: ROSS 8-60 18 SESW & SWSE SEC 18 T8N R60W 6th P.M.
Well: ROSS 8-60 18-7-11
Wellbore: Wellbore #1
Design: Design #1



ANNOTATIONS

MD	Inc	Azi	TVD	+N/-S	+E/-W	VSec	Dep	Annotation
800.0	0.00	0.00	800.0	0.0	0.0	0.0	0.0	Start Build 2.00
2077.4	25.55	97.65	2035.5	-37.3	277.6	19.3	280.1	Start 2887.2 hold at 2077.4 MD
4964.6	25.55	97.65	4640.4	-203.2	1511.7	105.3	1525.3	Start Drop -2.00
6242.0	0.00	0.00	5875.9	-240.5	1789.3	124.6	1805.4	Start Build 10.30
7115.6	90.00	0.90	6432.0	315.6	1798.0	671.0	2361.5	Start DLS 0.00 TFO 0.00
7265.4	90.01	0.90	6432.0	465.3	1800.4	818.2	2511.3	Start DLS 0.01 TFO -90.97
15831.8	89.99	0.25	6432.0	9031.3	1886.0	9226.1	11077.8	Start 149.7 hold at 15831.8 MD
15981.5	89.99	0.25	6432.0	9181.0	1886.7	9372.8	11227.5	TD at 15981.5

PROPOSED LOCAL COORDINATES:

SHL: 545 ft FSL & 2551 ft FEL Sec 18

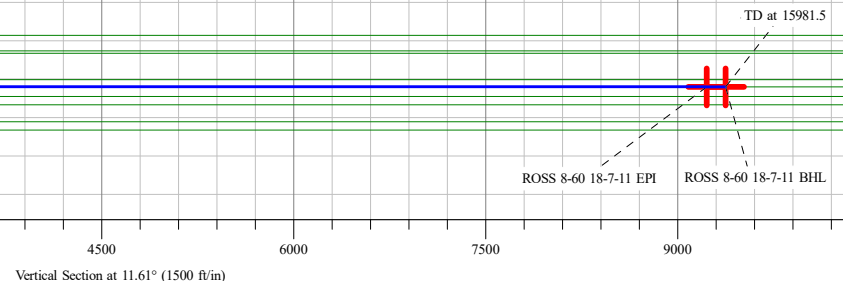
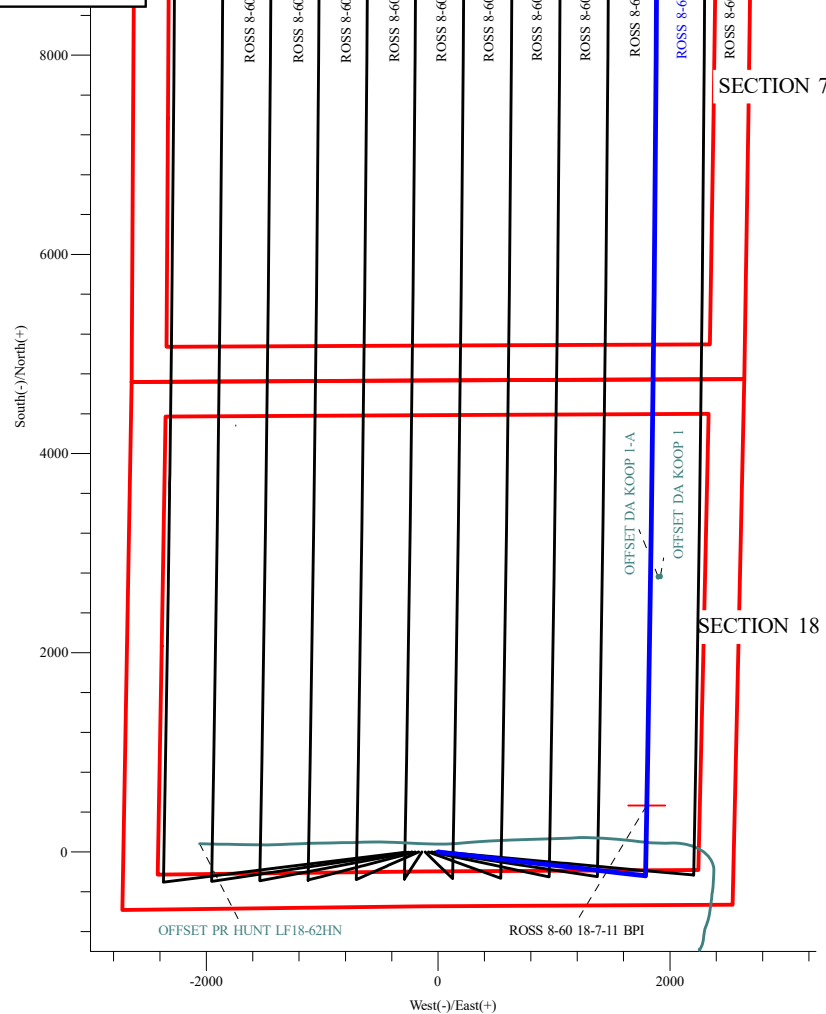
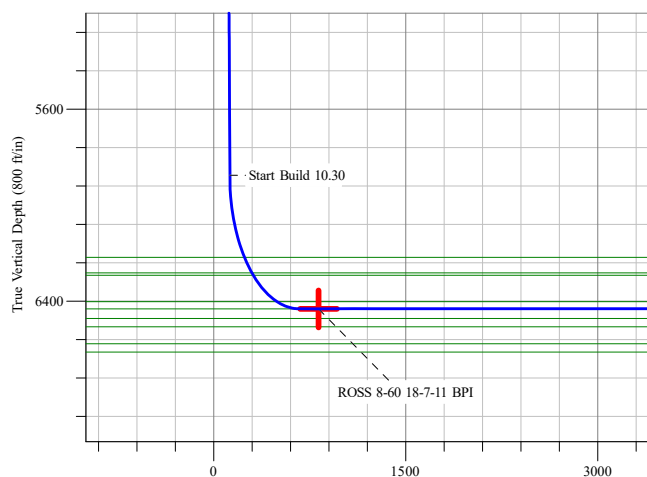
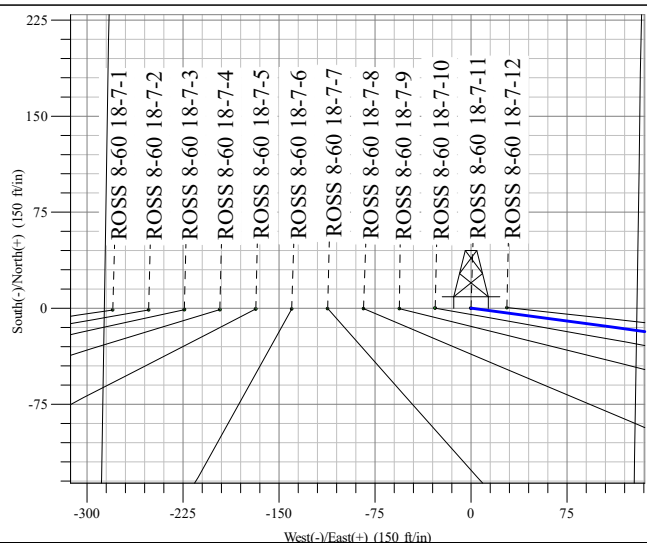
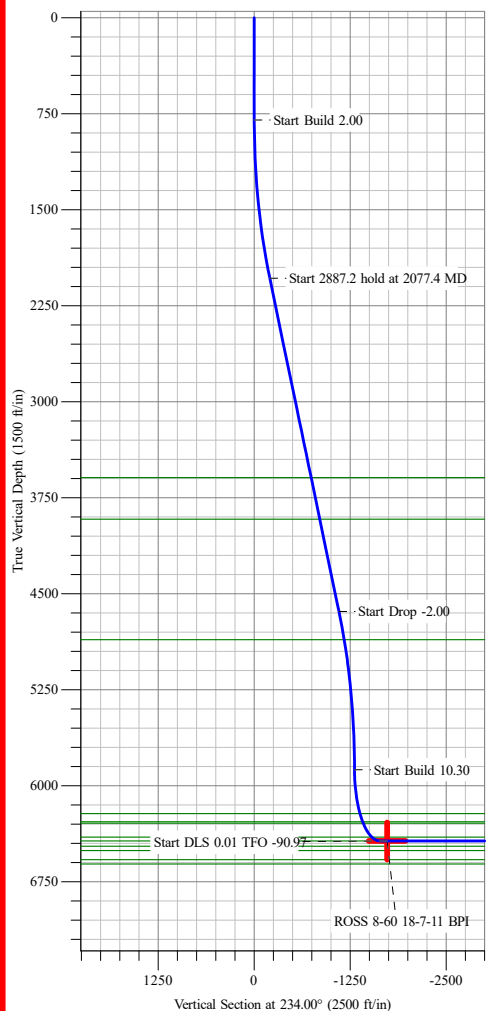
BPI: 1000 ft FSL & 759 ft FEL Sec 18

EPI: 1000 ft FNL & 811 ft FEL Sec 7

BHL: 850 ft FNL & 812 ft FEL Sec 7

WELLBORE TARGET DETAILS (LAT/LONG)

Name	TVD	+N/-S	+E/-W	Northing	Easting	Latitude	Longitude
ROSS 8-60 18-7-11 BPI	6432.0	465.3	1800.4	452755.01	1030453.19	40° 39' 27.965 N 104° 7' 39.540 W	
ROSS 8-60 18-7-11 EPI	6432.0	9031.3	1886.0	455366.01	1030439.07	40° 40' 52.608 N 104° 7' 38.420 W	
ROSS 8-60 18-7-11 BHL	6432.0	9181.0	1886.6	455411.65	1030438.53	40° 40' 54.088 N 104° 7' 38.413 W	Point



Survey Report

Company:	Bison Oil & Gas II, LLC	Local Co-ordinate Reference:	Well ROSS 8-60 18-7-11
Project:	WELD COUNTY, COLORADO (NAD 83)	TVD Reference:	KB 25 @ 4978.6ft
Site:	ROSS 8-60 18 SESW & SWSE SEC 18 T8N R60W 6th P.M.	MD Reference:	KB 25 @ 4978.6ft
Well:	ROSS 8-60 18-7-11	North Reference:	True
Wellbore:	Wellbore #1	Survey Calculation Method:	Minimum Curvature
Design:	Design #1	Database:	EDM 5000.16 Single User Db

Project	WELD COUNTY, COLORADO (NAD 83),		
Map System:	US State Plane 1983	System Datum:	Mean Sea Level
Geo Datum:	North American Datum 1983		
Map Zone:	Colorado Northern Zone		

Site		ROSS 8-60 18 SESW & SWSE SEC 18 T8N R60W 6th P.M.			
Site Position:		Northing:		452,604.25 m	
From:		Easting:		1,029,881.06 m	
Position Uncertainty:		Slot Radius:		13.200 in	
Lat/Long				Latitude: 40° 39' 23.364 N	
				Longitude: 104° 8' 3.991 W	

Well		ROSS 8-60 18-7-11				
Well Position	+N/-S	0.0 ft	Northing:	452,604.75 m	Latitude:	40° 39' 23.367 N
	+E/-W	0.0 ft	Easting:	1,029,906.68 m	Longitude:	104° 8' 2.900 W
Position Uncertainty		0.0 ft	Wellhead Elevation:	ft	Ground Level:	4,953.6 ft
Grid Convergence:		0.88 °				

Wellbore	Wellbore #1				
Magnetics	Model Name	Sample Date	Declination (°)	Dip Angle (°)	Field Strength (nT)
	IGRF200510	12/31/2009	8.70	67.42	53,502.85928961

Survey Tool Program	Date	9/1/2020			
From (ft)	To (ft)	Survey (Wellbore)	Tool Name	Description	
0.0	15,981.5	Design #1 (Wellbore #1)	MWD	Fixed:v2:standard declination	

Planned Survey									
Measured Depth (ft)	Inclination (°)	Azimuth (°)	Vertical Depth (ft)	+N/-S (ft)	+E/-W (ft)	Vertical Section (ft)	Dogleg Rate (°/100ft)	Build Rate (°/100ft)	Turn Rate (°/100ft)
0.0	0.00	0.00	0.0	0.0	0.0	0.0	0.00	0.00	0.00
100.0	0.00	0.00	100.0	0.0	0.0	0.0	0.00	0.00	0.00
200.0	0.00	0.00	200.0	0.0	0.0	0.0	0.00	0.00	0.00
300.0	0.00	0.00	300.0	0.0	0.0	0.0	0.00	0.00	0.00
400.0	0.00	0.00	400.0	0.0	0.0	0.0	0.00	0.00	0.00
500.0	0.00	0.00	500.0	0.0	0.0	0.0	0.00	0.00	0.00
600.0	0.00	0.00	600.0	0.0	0.0	0.0	0.00	0.00	0.00
700.0	0.00	0.00	700.0	0.0	0.0	0.0	0.00	0.00	0.00
800.0	0.00	0.00	800.0	0.0	0.0	0.0	0.00	0.00	0.00
Start Build 2.00									
900.0	2.00	97.65	900.0	-0.2	1.7	0.1	2.00	2.00	0.00
1,000.0	4.00	97.65	999.8	-0.9	6.9	0.5	2.00	2.00	0.00
1,100.0	6.00	97.65	1,099.5	-2.1	15.6	1.1	2.00	2.00	0.00
1,200.0	8.00	97.65	1,198.7	-3.7	27.6	1.9	2.00	2.00	0.00
1,300.0	10.00	97.65	1,297.5	-5.8	43.1	3.0	2.00	2.00	0.00
1,400.0	12.00	97.65	1,395.6	-8.3	62.0	4.3	2.00	2.00	0.00

Survey Report

Company:	Bison Oil & Gas II, LLC	Local Co-ordinate Reference:	Well ROSS 8-60 18-7-11
Project:	WELD COUNTY, COLORADO (NAD 83)	TVD Reference:	KB 25 @ 4978.6ft
Site:	ROSS 8-60 18 SESW & SWSE SEC 18 T8N R60W 6th P.M.	MD Reference:	KB 25 @ 4978.6ft
Well:	ROSS 8-60 18-7-11	North Reference:	True
Wellbore:	Wellbore #1	Survey Calculation Method:	Minimum Curvature
Design:	Design #1	Database:	EDM 5000.16 Single User Db

Planned Survey

Measured Depth (ft)	Inclination (°)	Azimuth (°)	Vertical Depth (ft)	+N/-S (ft)	+E/-W (ft)	Vertical Section (ft)	Dogleg Rate (°/100ft)	Build Rate (°/100ft)	Turn Rate (°/100ft)
1,500.0	14.00	97.65	1,493.1	-11.3	84.3	5.9	2.00	2.00	0.00
1,600.0	16.00	97.65	1,589.6	-14.8	110.0	7.7	2.00	2.00	0.00
1,700.0	18.00	97.65	1,685.3	-18.7	139.0	9.7	2.00	2.00	0.00
1,800.0	20.00	97.65	1,779.8	-23.0	171.2	11.9	2.00	2.00	0.00
1,900.0	22.00	97.65	1,873.2	-27.8	206.7	14.4	2.00	2.00	0.00
2,000.0	24.00	97.65	1,965.2	-33.0	245.5	17.1	2.00	2.00	0.00
2,077.4	25.55	97.65	2,035.5	-37.3	277.6	19.3	2.00	2.00	0.00
Start 2887.2 hold at 2077.4 MD									
2,100.0	25.55	97.65	2,055.9	-38.6	287.3	20.0	0.00	0.00	0.00
2,200.0	25.55	97.65	2,146.1	-44.4	330.0	23.0	0.00	0.00	0.00
2,300.0	25.55	97.65	2,236.3	-50.1	372.8	26.0	0.00	0.00	0.00
2,400.0	25.55	97.65	2,326.5	-55.8	415.5	28.9	0.00	0.00	0.00
2,500.0	25.55	97.65	2,416.8	-61.6	458.2	31.9	0.00	0.00	0.00
2,600.0	25.55	97.65	2,507.0	-67.3	501.0	34.9	0.00	0.00	0.00
2,700.0	25.55	97.65	2,597.2	-73.1	543.7	37.9	0.00	0.00	0.00
2,800.0	25.55	97.65	2,687.4	-78.8	586.5	40.8	0.00	0.00	0.00
2,900.0	25.55	97.65	2,777.7	-84.6	629.2	43.8	0.00	0.00	0.00
3,000.0	25.55	97.65	2,867.9	-90.3	672.0	46.8	0.00	0.00	0.00
3,100.0	25.55	97.65	2,958.1	-96.1	714.7	49.8	0.00	0.00	0.00
3,200.0	25.55	97.65	3,048.3	-101.8	757.5	52.7	0.00	0.00	0.00
3,300.0	25.55	97.65	3,138.5	-107.5	800.2	55.7	0.00	0.00	0.00
3,400.0	25.55	97.65	3,228.8	-113.3	842.9	58.7	0.00	0.00	0.00
3,500.0	25.55	97.65	3,319.0	-119.0	885.7	61.7	0.00	0.00	0.00
3,600.0	25.55	97.65	3,409.2	-124.8	928.4	64.7	0.00	0.00	0.00
3,700.0	25.55	97.65	3,499.4	-130.5	971.2	67.6	0.00	0.00	0.00
3,800.0	25.55	97.65	3,589.7	-136.3	1,013.9	70.6	0.00	0.00	0.00
3,900.0	25.55	97.65	3,679.9	-142.0	1,056.7	73.6	0.00	0.00	0.00
4,000.0	25.55	97.65	3,770.1	-147.8	1,099.4	76.6	0.00	0.00	0.00
4,100.0	25.55	97.65	3,860.3	-153.5	1,142.1	79.5	0.00	0.00	0.00
4,200.0	25.55	97.65	3,950.5	-159.3	1,184.9	82.5	0.00	0.00	0.00
4,300.0	25.55	97.65	4,040.8	-165.0	1,227.6	85.5	0.00	0.00	0.00
4,400.0	25.55	97.65	4,131.0	-170.7	1,270.4	88.5	0.00	0.00	0.00
4,500.0	25.55	97.65	4,221.2	-176.5	1,313.1	91.4	0.00	0.00	0.00
4,600.0	25.55	97.65	4,311.4	-182.2	1,355.9	94.4	0.00	0.00	0.00
4,700.0	25.55	97.65	4,401.6	-188.0	1,398.6	97.4	0.00	0.00	0.00
4,800.0	25.55	97.65	4,491.9	-193.7	1,441.3	100.4	0.00	0.00	0.00
4,900.0	25.55	97.65	4,582.1	-199.5	1,484.1	103.4	0.00	0.00	0.00
4,964.6	25.55	97.65	4,640.4	-203.2	1,511.7	105.3	0.00	0.00	0.00
Start Drop -2.00									
5,000.0	24.84	97.65	4,672.4	-205.2	1,526.6	106.3	2.00	-2.00	0.00
5,100.0	22.84	97.65	4,763.9	-210.6	1,566.7	109.1	2.00	-2.00	0.00
5,200.0	20.84	97.65	4,856.7	-215.5	1,603.6	111.7	2.00	-2.00	0.00
5,300.0	18.84	97.65	4,950.7	-220.0	1,637.2	114.0	2.00	-2.00	0.00

Survey Report

Company:	Bison Oil & Gas II, LLC	Local Co-ordinate Reference:	Well ROSS 8-60 18-7-11
Project:	WELD COUNTY, COLORADO (NAD 83)	TVD Reference:	KB 25 @ 4978.6ft
Site:	ROSS 8-60 18 SESW & SWSE SEC 18 T8N R60W 6th P.M.	MD Reference:	KB 25 @ 4978.6ft
Well:	ROSS 8-60 18-7-11	North Reference:	True
Wellbore:	Wellbore #1	Survey Calculation Method:	Minimum Curvature
Design:	Design #1	Database:	EDM 5000.16 Single User Db

Planned Survey

Measured Depth (ft)	Inclination (°)	Azimuth (°)	Vertical Depth (ft)	+N/-S (ft)	+E/-W (ft)	Vertical Section (ft)	Dogleg Rate (°/100ft)	Build Rate (°/100ft)	Turn Rate (°/100ft)
5,400.0	16.84	97.65	5,045.9	-224.1	1,667.6	116.1	2.00	-2.00	0.00
5,500.0	14.84	97.65	5,142.1	-227.8	1,694.6	118.0	2.00	-2.00	0.00
5,600.0	12.84	97.65	5,239.2	-230.9	1,718.3	119.7	2.00	-2.00	0.00
5,700.0	10.84	97.65	5,337.1	-233.7	1,738.7	121.1	2.00	-2.00	0.00
5,800.0	8.84	97.65	5,435.6	-236.0	1,755.6	122.3	2.00	-2.00	0.00
5,900.0	6.84	97.65	5,534.7	-237.8	1,769.1	123.2	2.00	-2.00	0.00
6,000.0	4.84	97.65	5,634.1	-239.1	1,779.2	123.9	2.00	-2.00	0.00
6,100.0	2.84	97.65	5,733.9	-240.0	1,785.8	124.4	2.00	-2.00	0.00
6,200.0	0.84	97.65	5,833.9	-240.4	1,789.0	124.6	2.00	-2.00	0.00
6,242.0	0.00	0.00	5,875.9	-240.5	1,789.3	124.6	2.00	-2.00	0.00
Start Build 10.30									
6,300.0	5.97	0.90	5,933.8	-237.5	1,789.4	127.6	10.30	10.30	0.00
6,400.0	16.27	0.90	6,031.7	-218.2	1,789.7	146.5	10.30	10.30	0.00
6,500.0	26.58	0.90	6,124.7	-181.7	1,790.3	182.3	10.30	10.30	0.00
6,600.0	36.88	0.90	6,209.6	-129.2	1,791.1	234.0	10.30	10.30	0.00
6,700.0	47.18	0.90	6,283.8	-62.4	1,792.1	299.7	10.30	10.30	0.00
6,800.0	57.49	0.90	6,344.8	16.7	1,793.4	377.3	10.30	10.30	0.00
6,900.0	67.79	0.90	6,390.7	105.4	1,794.7	464.5	10.30	10.30	0.00
7,000.0	78.09	0.90	6,420.0	200.8	1,796.2	558.3	10.30	10.30	0.00
7,100.0	88.40	0.90	6,431.8	300.0	1,797.8	655.7	10.30	10.30	0.00
7,115.6	90.00	0.90	6,432.0	315.6	1,798.0	671.0	10.30	10.30	0.00
Start DLS 0.00 TFO 0.00									
7,200.0	90.00	0.90	6,432.0	400.0	1,799.4	754.0	0.00	0.00	0.00
7,265.4	90.00	0.90	6,432.0	465.3	1,800.4	818.2	0.00	0.00	0.00
Start DLS 0.01 TFO -90.97 - ROSS 8-60 18-7-11 BPI									
7,300.0	90.01	0.89	6,432.0	500.0	1,800.9	852.2	0.01	0.01	-0.01
7,400.0	90.01	0.89	6,432.0	599.9	1,802.5	950.5	0.01	0.00	-0.01
7,500.0	90.01	0.88	6,432.0	699.9	1,804.0	1,048.7	0.01	0.00	-0.01
7,600.0	90.01	0.87	6,432.0	799.9	1,805.6	1,147.0	0.01	0.00	-0.01
7,700.0	90.00	0.86	6,432.0	899.9	1,807.1	1,245.2	0.01	0.00	-0.01
7,800.0	90.00	0.86	6,432.0	999.9	1,808.6	1,343.5	0.01	0.00	-0.01
7,900.0	90.00	0.85	6,431.9	1,099.9	1,810.1	1,441.7	0.01	0.00	-0.01
8,000.0	90.00	0.84	6,431.9	1,199.9	1,811.5	1,540.0	0.01	0.00	-0.01
8,100.0	90.00	0.83	6,431.9	1,299.9	1,813.0	1,638.2	0.01	0.00	-0.01
8,200.0	90.00	0.83	6,431.9	1,399.9	1,814.4	1,736.4	0.01	0.00	-0.01
8,300.0	90.00	0.82	6,431.9	1,499.8	1,815.9	1,834.7	0.01	0.00	-0.01
8,400.0	90.00	0.81	6,431.9	1,599.8	1,817.3	1,932.9	0.01	0.00	-0.01
8,500.0	90.00	0.80	6,431.9	1,699.8	1,818.7	2,031.1	0.01	0.00	-0.01
8,600.0	90.00	0.80	6,431.9	1,799.8	1,820.1	2,129.3	0.01	0.00	-0.01
8,700.0	90.00	0.79	6,431.9	1,899.8	1,821.5	2,227.6	0.01	0.00	-0.01
8,800.0	90.00	0.78	6,431.9	1,999.8	1,822.9	2,325.8	0.01	0.00	-0.01
8,900.0	90.00	0.77	6,431.9	2,099.8	1,824.2	2,424.0	0.01	0.00	-0.01
9,000.0	90.00	0.77	6,431.9	2,199.8	1,825.6	2,522.2	0.01	0.00	-0.01

Survey Report

Company:	Bison Oil & Gas II, LLC	Local Co-ordinate Reference:	Well ROSS 8-60 18-7-11
Project:	WELD COUNTY, COLORADO (NAD 83)	TVD Reference:	KB 25 @ 4978.6ft
Site:	ROSS 8-60 18 SESW & SWSE SEC 18 T8N R60W 6th P.M.	MD Reference:	KB 25 @ 4978.6ft
Well:	ROSS 8-60 18-7-11	North Reference:	True
Wellbore:	Wellbore #1	Survey Calculation Method:	Minimum Curvature
Design:	Design #1	Database:	EDM 5000.16 Single User Db

Planned Survey

Measured Depth (ft)	Inclination (°)	Azimuth (°)	Vertical Depth (ft)	+N/-S (ft)	+E/-W (ft)	Vertical Section (ft)	Dogleg Rate (°/100ft)	Build Rate (°/100ft)	Turn Rate (°/100ft)
9,100.0	90.00	0.76	6,431.9	2,299.8	1,826.9	2,620.4	0.01	0.00	-0.01
9,200.0	90.00	0.75	6,431.9	2,399.8	1,828.2	2,718.6	0.01	0.00	-0.01
9,300.0	90.00	0.74	6,431.9	2,499.8	1,829.5	2,816.8	0.01	0.00	-0.01
9,400.0	90.00	0.74	6,431.8	2,599.7	1,830.8	2,915.1	0.01	0.00	-0.01
9,500.0	90.00	0.73	6,431.8	2,699.7	1,832.1	3,013.3	0.01	0.00	-0.01
9,600.0	90.00	0.72	6,431.8	2,799.7	1,833.3	3,111.5	0.01	0.00	-0.01
9,700.0	90.00	0.71	6,431.8	2,899.7	1,834.6	3,209.7	0.01	0.00	-0.01
9,800.0	90.00	0.71	6,431.8	2,999.7	1,835.8	3,307.8	0.01	0.00	-0.01
9,900.0	90.00	0.70	6,431.8	3,099.7	1,837.0	3,406.0	0.01	0.00	-0.01
10,000.0	90.00	0.69	6,431.8	3,199.7	1,838.3	3,504.2	0.01	0.00	-0.01
10,100.0	90.00	0.68	6,431.8	3,299.7	1,839.5	3,602.4	0.01	0.00	-0.01
10,200.0	90.00	0.67	6,431.8	3,399.7	1,840.6	3,700.6	0.01	0.00	-0.01
10,300.0	90.00	0.67	6,431.8	3,499.7	1,841.8	3,798.8	0.01	0.00	-0.01
10,400.0	90.00	0.66	6,431.8	3,599.7	1,843.0	3,897.0	0.01	0.00	-0.01
10,500.0	90.00	0.65	6,431.8	3,699.7	1,844.1	3,995.1	0.01	0.00	-0.01
10,600.0	90.00	0.64	6,431.8	3,799.7	1,845.2	4,093.3	0.01	0.00	-0.01
10,700.0	90.00	0.64	6,431.8	3,899.6	1,846.4	4,191.5	0.01	0.00	-0.01
10,800.0	90.00	0.63	6,431.8	3,999.6	1,847.5	4,289.7	0.01	0.00	-0.01
10,900.0	90.00	0.62	6,431.8	4,099.6	1,848.6	4,387.8	0.01	0.00	-0.01
11,000.0	90.00	0.61	6,431.8	4,199.6	1,849.6	4,486.0	0.01	0.00	-0.01
11,100.0	90.00	0.61	6,431.8	4,299.6	1,850.7	4,584.1	0.01	0.00	-0.01
11,200.0	90.00	0.60	6,431.8	4,399.6	1,851.8	4,682.3	0.01	0.00	-0.01
11,300.0	90.00	0.59	6,431.8	4,499.6	1,852.8	4,780.5	0.01	0.00	-0.01
11,400.0	90.00	0.58	6,431.8	4,599.6	1,853.8	4,878.6	0.01	0.00	-0.01
11,500.0	90.00	0.58	6,431.8	4,699.6	1,854.8	4,976.8	0.01	0.00	-0.01
11,600.0	90.00	0.57	6,431.8	4,799.6	1,855.8	5,074.9	0.01	0.00	-0.01
11,700.0	90.00	0.56	6,431.8	4,899.6	1,856.8	5,173.1	0.01	0.00	-0.01
11,800.0	90.00	0.55	6,431.8	4,999.6	1,857.8	5,271.2	0.01	0.00	-0.01
11,900.0	90.00	0.55	6,431.8	5,099.6	1,858.8	5,369.4	0.01	0.00	-0.01
12,000.0	90.00	0.54	6,431.8	5,199.6	1,859.7	5,467.5	0.01	0.00	-0.01
12,100.0	90.00	0.53	6,431.8	5,299.6	1,860.6	5,565.6	0.01	0.00	-0.01
12,200.0	90.00	0.52	6,431.8	5,399.6	1,861.6	5,663.8	0.01	0.00	-0.01
12,300.0	90.00	0.52	6,431.8	5,499.6	1,862.5	5,761.9	0.01	0.00	-0.01
12,400.0	90.00	0.51	6,431.8	5,599.6	1,863.4	5,860.0	0.01	0.00	-0.01
12,500.0	90.00	0.50	6,431.8	5,699.6	1,864.2	5,958.2	0.01	0.00	-0.01
12,600.0	90.00	0.49	6,431.8	5,799.6	1,865.1	6,056.3	0.01	0.00	-0.01
12,700.0	90.00	0.49	6,431.8	5,899.6	1,866.0	6,154.4	0.01	0.00	-0.01
12,800.0	90.00	0.48	6,431.8	5,999.5	1,866.8	6,252.5	0.01	0.00	-0.01
12,900.0	90.00	0.47	6,431.8	6,099.5	1,867.6	6,350.6	0.01	0.00	-0.01
13,000.0	90.00	0.46	6,431.8	6,199.5	1,868.4	6,448.7	0.01	0.00	-0.01
13,100.0	90.00	0.46	6,431.8	6,299.5	1,869.2	6,546.9	0.01	0.00	-0.01
13,200.0	90.00	0.45	6,431.8	6,399.5	1,870.0	6,645.0	0.01	0.00	-0.01
13,300.0	90.00	0.44	6,431.8	6,499.5	1,870.8	6,743.1	0.01	0.00	-0.01

Survey Report

Company:	Bison Oil & Gas II, LLC	Local Co-ordinate Reference:	Well ROSS 8-60 18-7-11
Project:	WELD COUNTY, COLORADO (NAD 83)	TVD Reference:	KB 25 @ 4978.6ft
Site:	ROSS 8-60 18 SESW & SWSE SEC 18 T8N R60W 6th P.M.	MD Reference:	KB 25 @ 4978.6ft
Well:	ROSS 8-60 18-7-11	North Reference:	True
Wellbore:	Wellbore #1	Survey Calculation Method:	Minimum Curvature
Design:	Design #1	Database:	EDM 5000.16 Single User Db

Planned Survey

Measured Depth (ft)	Inclination (°)	Azimuth (°)	Vertical Depth (ft)	+N/-S (ft)	+E/-W (ft)	Vertical Section (ft)	Dogleg Rate (°/100ft)	Build Rate (°/100ft)	Turn Rate (°/100ft)
13,400.0	90.00	0.43	6,431.8	6,599.5	1,871.6	6,841.2	0.01	0.00	-0.01
13,500.0	90.00	0.42	6,431.8	6,699.5	1,872.3	6,939.3	0.01	0.00	-0.01
13,600.0	90.00	0.42	6,431.8	6,799.5	1,873.0	7,037.4	0.01	0.00	-0.01
13,700.0	90.00	0.41	6,431.8	6,899.5	1,873.8	7,135.5	0.01	0.00	-0.01
13,800.0	90.00	0.40	6,431.9	6,999.5	1,874.5	7,233.6	0.01	0.00	-0.01
13,900.0	90.00	0.39	6,431.9	7,099.5	1,875.2	7,331.7	0.01	0.00	-0.01
14,000.0	90.00	0.39	6,431.9	7,199.5	1,875.9	7,429.7	0.01	0.00	-0.01
14,100.0	90.00	0.38	6,431.9	7,299.5	1,876.5	7,527.8	0.01	0.00	-0.01
14,200.0	90.00	0.37	6,431.9	7,399.5	1,877.2	7,625.9	0.01	0.00	-0.01
14,300.0	90.00	0.36	6,431.9	7,499.5	1,877.8	7,724.0	0.01	0.00	-0.01
14,400.0	90.00	0.36	6,431.9	7,599.5	1,878.5	7,822.1	0.01	0.00	-0.01
14,500.0	90.00	0.35	6,431.9	7,699.5	1,879.1	7,920.1	0.01	0.00	-0.01
14,600.0	90.00	0.34	6,431.9	7,799.5	1,879.7	8,018.2	0.01	0.00	-0.01
14,700.0	90.00	0.33	6,431.9	7,899.5	1,880.3	8,116.3	0.01	0.00	-0.01
14,800.0	90.00	0.33	6,431.9	7,999.5	1,880.8	8,214.4	0.01	0.00	-0.01
14,900.0	90.00	0.32	6,431.9	8,099.5	1,881.4	8,312.4	0.01	0.00	-0.01
15,000.0	90.00	0.31	6,431.9	8,199.5	1,882.0	8,410.5	0.01	0.00	-0.01
15,100.0	90.00	0.30	6,431.9	8,299.5	1,882.5	8,508.5	0.01	0.00	-0.01
15,200.0	90.00	0.30	6,431.9	8,399.5	1,883.0	8,606.6	0.01	0.00	-0.01
15,300.0	90.00	0.29	6,432.0	8,499.5	1,883.5	8,704.7	0.01	0.00	-0.01
15,400.0	90.00	0.28	6,432.0	8,599.5	1,884.0	8,802.7	0.01	0.00	-0.01
15,500.0	89.99	0.27	6,432.0	8,699.5	1,884.5	8,900.8	0.01	0.00	-0.01
15,600.0	89.99	0.27	6,432.0	8,799.5	1,885.0	8,998.8	0.01	0.00	-0.01
15,700.0	89.99	0.26	6,432.0	8,899.5	1,885.4	9,096.8	0.01	0.00	-0.01
15,800.0	89.99	0.25	6,432.0	8,999.5	1,885.9	9,194.9	0.01	0.00	-0.01
15,831.8	89.99	0.25	6,432.0	9,031.3	1,886.0	9,226.1	0.00	0.00	0.00
Start 149.7 hold at 15831.8 MD - ROSS 8-60 18-7-11 EPI									
15,900.0	89.99	0.25	6,432.0	9,099.5	1,886.3	9,292.9	0.00	0.00	0.00
15,981.5	89.99	0.25	6,432.0	9,181.0	1,886.7	9,372.8	0.00	0.00	0.00
TD at 15981.5 - ROSS 8-60 18-7-11 BHL									

Survey Report

Company:	Bison Oil & Gas II, LLC	Local Co-ordinate Reference:	Well ROSS 8-60 18-7-11
Project:	WELD COUNTY, COLORADO (NAD 83)	TVD Reference:	KB 25 @ 4978.6ft
Site:	ROSS 8-60 18 SESW & SWSE SEC 18 T8N R60W 6th P.M.	MD Reference:	KB 25 @ 4978.6ft
Well:	ROSS 8-60 18-7-11	North Reference:	True
Wellbore:	Wellbore #1	Survey Calculation Method:	Minimum Curvature
Design:	Design #1	Database:	EDM 5000.16 Single User Db

Design Targets									
Target Name	Dip Angle	Dip Dir.	TVD	+N/-S	+E/-W	Northing	Easting	Latitude	Longitude
- hit/miss target	(°)	(°)	(ft)	(ft)	(ft)	(m)	(m)		
- Shape									
ROSS 8-60 18-7-11 BHL	0.00	0.89	6,432.0	9,181.0	1,886.6	455,411.65	1,030,438.54	40° 40' 54.088 N	104° 7' 38.413 W
- plan misses target center by 0.1ft at 15981.5ft MD (6432.0 TVD, 9181.0 N, 1886.7 E)									
- Point									
ROSS 8-60 18-7-11 BPI	0.00	0.89	6,432.0	465.3	1,800.4	452,755.01	1,030,453.19	40° 39' 27.965 N	104° 7' 39.540 W
- plan hits target center									
- Point									
ROSS 8-60 18-7-11 EPI	0.00	0.89	6,432.0	9,031.3	1,886.0	455,366.01	1,030,439.07	40° 40' 52.608 N	104° 7' 38.420 W
- plan hits target center									
- Point									

Formations					
Measured Depth	Vertical Depth	Name	Lithology	Dip	Dip Direction
(ft)	(ft)			(°)	(°)
3,803.7	3,593.0	Parkman			
4,163.9	3,918.0	Sussex			
5,201.4	4,858.0	Shannon			
6,609.3	6,217.0	Sharon Springs Shale			
6,697.3	6,282.0	Niobrara Formation			
6,712.2	6,292.0	Niobrara A Chalk			
6,932.1	6,402.0	Niobrara B Chalk			
7,112.7	6,432.0	Niobrara B Landing Point			

Plan Annotations				
Measured Depth	Vertical Depth	Local Coordinates		Comment
(ft)	(ft)	+N/-S (ft)	+E/-W (ft)	
800	800	0	0	Start Build 2.00
2077	2036	-37	278	Start 2887.2 hold at 2077.4 MD
4965	4640	-203	1512	Start Drop -2.00
6242	5876	-240	1789	Start Build 10.30
7116	6432	316	1798	Start DLS 0.00 TFO 0.00
7265	6432	465	1800	Start DLS 0.01 TFO -90.97
15,832	6432	9031	1886	Start 149.7 hold at 15831.8 MD
15,982	6432	9181	1887	TD at 15981.5