

Bison Oil & Gas II, LLC

WELD COUNTY, COLORADO (NAD 83)

ROSS 8-60 18 SESW & SWSE SEC 18 T8N R60W 6th P.M.

ROSS 8-60 18-7-2

Wellbore #1

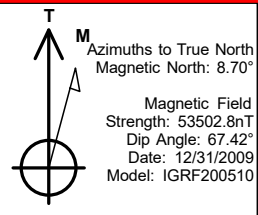
Plan: Design #1

Standard Survey Report

02 September, 2020



Project: WELD COUNTY, COLORADO (NAD 83)
Site: ROSS 8-60 18 SESW & SWSE SEC 18 T8N R60W 6th P.M
Well: ROSS 8-60 18-7-2
Wellbore: Wellbore #1
Design: Design #1



ANNOTATIONS

MD	Inc	Azi	TVD	+N/-S	+E/-W	VSec	Departure	Annotation
800.0	0.00	0.00	800.0	0.0	0.0	0.0	0.0	Start Build 2.00
1986.6	23.73	260.21	1953.0	-41.2	-238.7	0.6	242.3	Start 3089.3 hold at 1986.6 MD
5075.9	23.73	260.21	4781.0	-252.6	-1463.9	3.5	1485.6	Start Drop -2.00
6262.5	0.00	0.00	5934.0	-293.8	-1702.7	4.1	1727.8	Start Build 10.00
7162.5	90.00	0.88	6507.0	279.1	-1693.9	566.9	2300.8	Start DLS 0.02 TFO 180.00
7312.7	89.97	0.88	6507.0	429.2	-1691.6	714.4	2451.0	Start DLS 0.01 TFO -83.87
15902.8	90.03	0.28	6507.0	9018.9	-1605.3	9160.6	11041.1	Start 149.7 hold at 15902.8 MD
16052.5	90.03	0.28	6506.9	9168.6	-1604.6	9307.9	11190.8	TD at 16052.5

PROPOSED LOCAL COORDINATES:

SHL: 546 ft FSL & 2464 ft FWL Sec 18

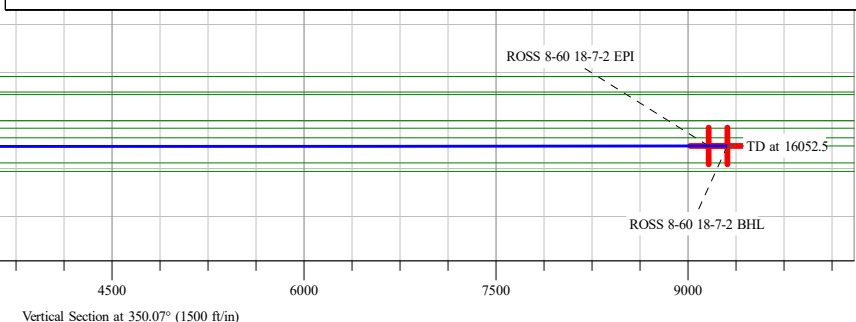
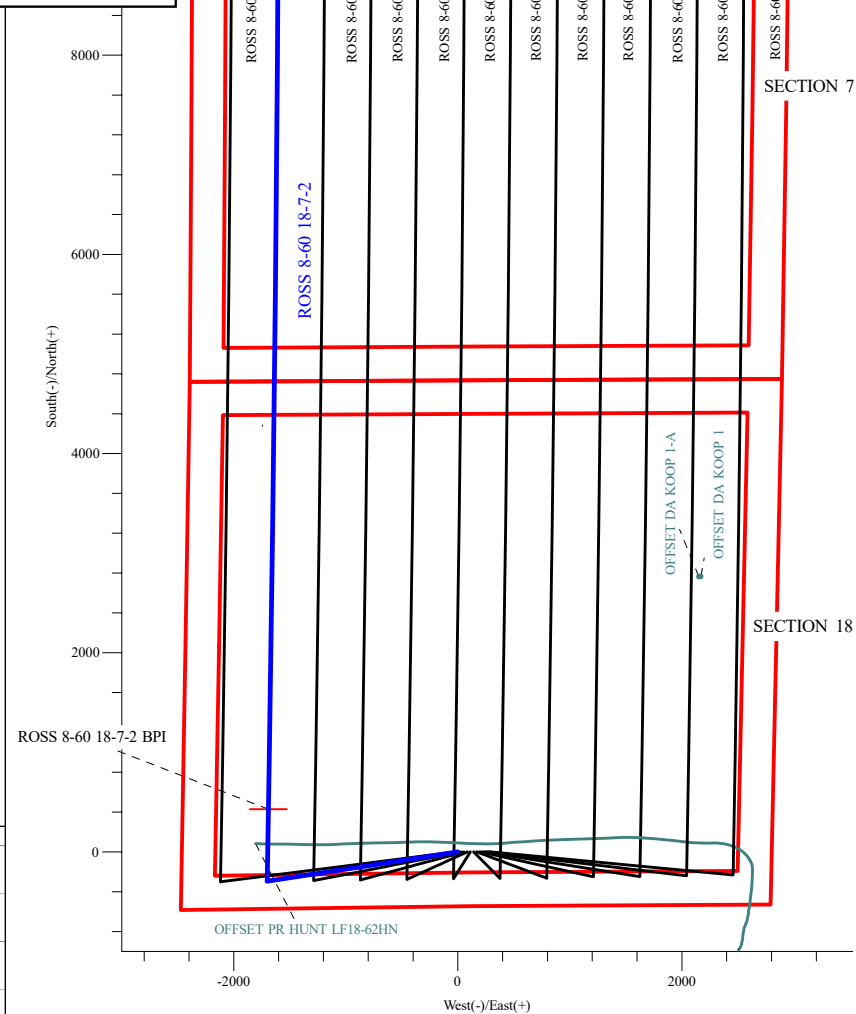
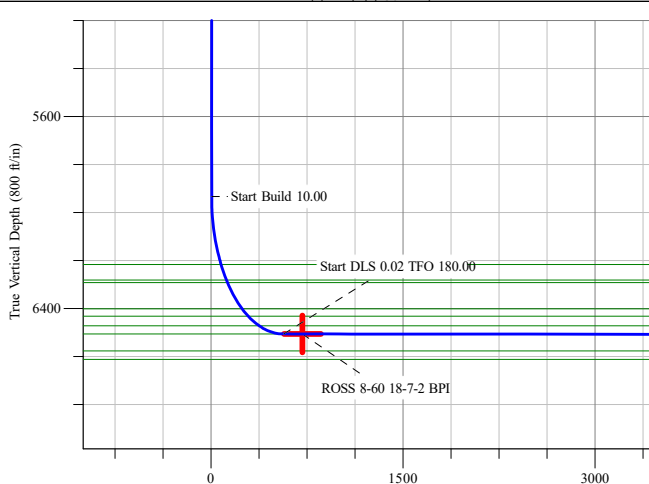
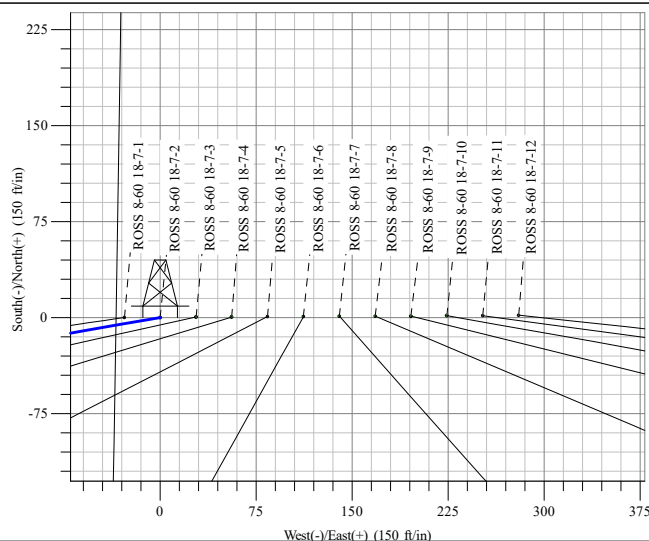
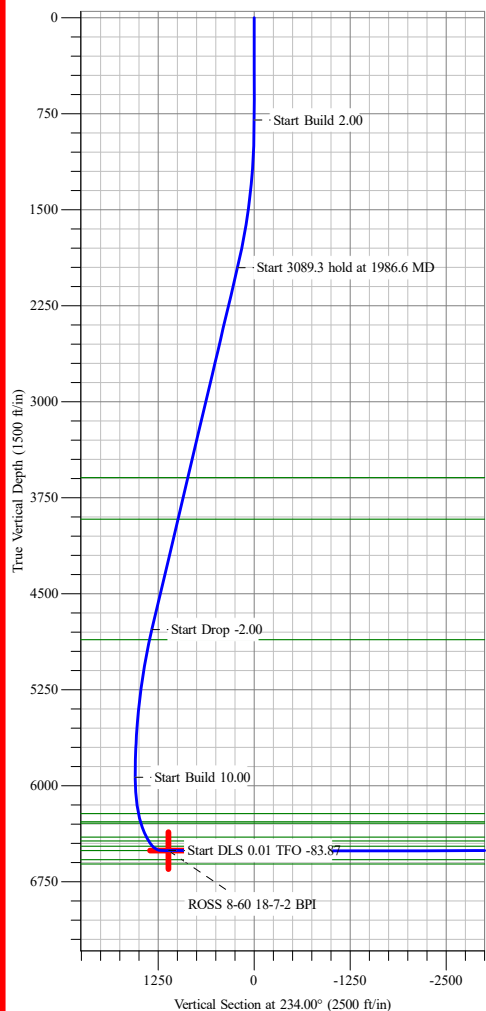
BPI: 1000 ft FSL & 766 ft FWL Sec 18

EPI: 1000 ft FNL & 766 ft FWL Sec 7

BHL: 850 ft FNL & 766 ft FWL Sec 7

WELLBORE TARGET DETAILS (LAT/LONG)

Name	TVD	+N/-S	+E/-W	Northing	Easting	Latitude	Longitude
ROSS 8-60 18-7-2 BPI	6507.0	429.2	-1691.6	452726.00	1029312.35	40° 39' 27.594 N 104° 8' 28.118 W	
ROSS 8-60 18-7-2 EPI	6507.0	9018.9	-1605.3	455344.22	1029298.35	40° 40' 52.471 N 104° 8' 27.006 W	
ROSS 8-60 18-7-2 BHL	6507.0	9168.6	-1604.5	455389.86	1029297.90	40° 40' 53.951 N 104° 8' 26.995 W	Point



Survey Report

Company:	Bison Oil & Gas II, LLC	Local Co-ordinate Reference:	Well ROSS 8-60 18-7-2
Project:	WELD COUNTY, COLORADO (NAD 83)	TVD Reference:	WELL @ 4953.0ft (Original Well Elev)
Site:	ROSS 8-60 18 SESW & SWSE SEC 18 T8N R60W 6th P.M.	MD Reference:	WELL @ 4953.0ft (Original Well Elev)
Well:	ROSS 8-60 18-7-2	North Reference:	True
Wellbore:	Wellbore #1	Survey Calculation Method:	Minimum Curvature
Design:	Design #1	Database:	EDM 5000.16 Single User Db

Project	WELD COUNTY, COLORADO (NAD 83),		
Map System:	US State Plane 1983	System Datum:	Mean Sea Level
Geo Datum:	North American Datum 1983		
Map Zone:	Colorado Northern Zone		

Site		ROSS 8-60 18 SESW & SWSE SEC 18 T8N R60W 6th P.M.			
Site Position:		Northing:		452,604.25 m	
From:		Easting:		1,029,881.06 m	
Position Uncertainty:		Slot Radius:		13.200 in	
Lat/Long				Latitude: 40° 39' 23.364 N	
				Longitude: 104° 8' 3.991 W	

Well		ROSS 8-60 18-7-2				
Well Position	+N/-S	0.0 ft	Northing:	452,603.12 m	Latitude:	40° 39' 23.353 N
	+E/-W	0.0 ft	Easting:	1,029,829.91 m	Longitude:	104° 8' 6.169 W
Position Uncertainty		0.0 ft	Wellhead Elevation:	ft	Ground Level:	4,949.7 ft
Grid Convergence:		0.88 °				

Wellbore	Wellbore #1				
Magnetics	Model Name	Sample Date	Declination (°)	Dip Angle (°)	Field Strength (nT)
	IGRF200510	12/31/2009	8.70	67.42	53,502.76464891

Planned Survey									
Measured Depth (ft)	Inclination (°)	Azimuth (°)	Vertical Depth (ft)	+N/-S (ft)	+E/-W (ft)	Vertical Section (ft)	Dogleg Rate (°/100ft)	Build Rate (°/100ft)	Turn Rate (°/100ft)
0.0	0.00	0.00	0.0	0.0	0.0	0.0	0.00	0.00	0.00
100.0	0.00	0.00	100.0	0.0	0.0	0.0	0.00	0.00	0.00
200.0	0.00	0.00	200.0	0.0	0.0	0.0	0.00	0.00	0.00
300.0	0.00	0.00	300.0	0.0	0.0	0.0	0.00	0.00	0.00
400.0	0.00	0.00	400.0	0.0	0.0	0.0	0.00	0.00	0.00
500.0	0.00	0.00	500.0	0.0	0.0	0.0	0.00	0.00	0.00
600.0	0.00	0.00	600.0	0.0	0.0	0.0	0.00	0.00	0.00
700.0	0.00	0.00	700.0	0.0	0.0	0.0	0.00	0.00	0.00
800.0	0.00	0.00	800.0	0.0	0.0	0.0	0.00	0.00	0.00
Start Build 2.00									
900.0	2.00	260.21	900.0	-0.3	-1.7	0.0	2.00	2.00	0.00
1,000.0	4.00	260.21	999.8	-1.2	-6.9	0.0	2.00	2.00	0.00
1,100.0	6.00	260.21	1,099.5	-2.7	-15.5	0.0	2.00	2.00	0.00
1,200.0	8.00	260.21	1,198.7	-4.7	-27.5	0.1	2.00	2.00	0.00
1,300.0	10.00	260.21	1,297.5	-7.4	-42.9	0.1	2.00	2.00	0.00
1,400.0	12.00	260.21	1,395.6	-10.6	-61.7	0.1	2.00	2.00	0.00
1,500.0	14.00	260.21	1,493.1	-14.5	-83.9	0.2	2.00	2.00	0.00
1,600.0	16.00	260.21	1,589.6	-18.9	-109.4	0.3	2.00	2.00	0.00
1,700.0	18.00	260.21	1,685.3	-23.8	-138.2	0.3	2.00	2.00	0.00
1,800.0	20.00	260.21	1,779.8	-29.4	-170.3	0.4	2.00	2.00	0.00
1,900.0	22.00	260.21	1,873.2	-35.5	-205.6	0.5	2.00	2.00	0.00
1,986.6	23.73	260.21	1,953.0	-41.2	-238.7	0.6	2.00	2.00	0.00

Survey Report

Company:	Bison Oil & Gas II, LLC	Local Co-ordinate Reference:	Well ROSS 8-60 18-7-2
Project:	WELD COUNTY, COLORADO (NAD 83)	TVD Reference:	WELL @ 4953.0ft (Original Well Elev)
Site:	ROSS 8-60 18 SESW & SWSE SEC 18 T8N R60W 6th P.M.	MD Reference:	WELL @ 4953.0ft (Original Well Elev)
Well:	ROSS 8-60 18-7-2	North Reference:	True
Wellbore:	Wellbore #1	Survey Calculation Method:	Minimum Curvature
Design:	Design #1	Database:	EDM 5000.16 Single User Db

Planned Survey

Measured Depth (ft)	Inclination (°)	Azimuth (°)	Vertical Depth (ft)	+N/-S (ft)	+E/-W (ft)	Vertical Section (ft)	Dogleg Rate (°/100ft)	Build Rate (°/100ft)	Turn Rate (°/100ft)
Start 3089.3 hold at 1986.6 MD									
2,000.0	23.73	260.21	1,965.2	-42.1	-244.0	0.6	0.00	0.00	0.00
2,100.0	23.73	260.21	2,056.8	-49.0	-283.7	0.7	0.00	0.00	0.00
2,200.0	23.73	260.21	2,148.3	-55.8	-323.4	0.8	0.00	0.00	0.00
2,300.0	23.73	260.21	2,239.9	-62.6	-363.0	0.9	0.00	0.00	0.00
2,400.0	23.73	260.21	2,331.4	-69.5	-402.7	1.0	0.00	0.00	0.00
2,500.0	23.73	260.21	2,422.9	-76.3	-442.3	1.1	0.00	0.00	0.00
2,600.0	23.73	260.21	2,514.5	-83.2	-482.0	1.2	0.00	0.00	0.00
2,700.0	23.73	260.21	2,606.0	-90.0	-521.7	1.3	0.00	0.00	0.00
2,800.0	23.73	260.21	2,697.6	-96.9	-561.3	1.4	0.00	0.00	0.00
2,900.0	23.73	260.21	2,789.1	-103.7	-601.0	1.4	0.00	0.00	0.00
3,000.0	23.73	260.21	2,880.7	-110.6	-640.6	1.5	0.00	0.00	0.00
3,100.0	23.73	260.21	2,972.2	-117.4	-680.3	1.6	0.00	0.00	0.00
3,200.0	23.73	260.21	3,063.8	-124.2	-720.0	1.7	0.00	0.00	0.00
3,300.0	23.73	260.21	3,155.3	-131.1	-759.6	1.8	0.00	0.00	0.00
3,400.0	23.73	260.21	3,246.8	-137.9	-799.3	1.9	0.00	0.00	0.00
3,500.0	23.73	260.21	3,338.4	-144.8	-838.9	2.0	0.00	0.00	0.00
3,600.0	23.73	260.21	3,429.9	-151.6	-878.6	2.1	0.00	0.00	0.00
3,700.0	23.73	260.21	3,521.5	-158.5	-918.3	2.2	0.00	0.00	0.00
3,800.0	23.73	260.21	3,613.0	-165.3	-957.9	2.3	0.00	0.00	0.00
3,900.0	23.73	260.21	3,704.6	-172.2	-997.6	2.4	0.00	0.00	0.00
4,000.0	23.73	260.21	3,796.1	-179.0	-1,037.2	2.5	0.00	0.00	0.00
4,100.0	23.73	260.21	3,887.6	-185.8	-1,076.9	2.6	0.00	0.00	0.00
4,200.0	23.73	260.21	3,979.2	-192.7	-1,116.6	2.7	0.00	0.00	0.00
4,300.0	23.73	260.21	4,070.7	-199.5	-1,156.2	2.8	0.00	0.00	0.00
4,400.0	23.73	260.21	4,162.3	-206.4	-1,195.9	2.9	0.00	0.00	0.00
4,500.0	23.73	260.21	4,253.8	-213.2	-1,235.5	3.0	0.00	0.00	0.00
4,600.0	23.73	260.21	4,345.4	-220.1	-1,275.2	3.1	0.00	0.00	0.00
4,700.0	23.73	260.21	4,436.9	-226.9	-1,314.9	3.2	0.00	0.00	0.00
4,800.0	23.73	260.21	4,528.4	-233.7	-1,354.5	3.3	0.00	0.00	0.00
4,900.0	23.73	260.21	4,620.0	-240.6	-1,394.2	3.4	0.00	0.00	0.00
5,000.0	23.73	260.21	4,711.5	-247.4	-1,433.8	3.5	0.00	0.00	0.00
5,075.9	23.73	260.21	4,781.0	-252.6	-1,463.9	3.5	0.00	0.00	0.00
Start Drop -2.00									
5,100.0	23.25	260.21	4,803.1	-254.3	-1,473.4	3.5	2.00	-2.00	0.00
5,200.0	21.25	260.21	4,895.7	-260.7	-1,510.7	3.6	2.00	-2.00	0.00
5,300.0	19.25	260.21	4,989.5	-266.6	-1,544.8	3.7	2.00	-2.00	0.00
5,400.0	17.25	260.21	5,084.4	-271.9	-1,575.7	3.8	2.00	-2.00	0.00
5,500.0	15.25	260.21	5,180.4	-276.7	-1,603.3	3.9	2.00	-2.00	0.00
5,600.0	13.25	260.21	5,277.4	-280.9	-1,627.5	3.9	2.00	-2.00	0.00
5,700.0	11.25	260.21	5,375.1	-284.5	-1,648.4	4.0	2.00	-2.00	0.00
5,800.0	9.25	260.21	5,473.5	-287.5	-1,666.0	4.0	2.00	-2.00	0.00
5,900.0	7.25	260.21	5,572.4	-289.9	-1,680.1	4.0	2.00	-2.00	0.00

Survey Report

Company:	Bison Oil & Gas II, LLC	Local Co-ordinate Reference:	Well ROSS 8-60 18-7-2
Project:	WELD COUNTY, COLORADO (NAD 83)	TVD Reference:	WELL @ 4953.0ft (Original Well Elev)
Site:	ROSS 8-60 18 SESW & SWSE SEC 18 T8N R60W 6th P.M.	MD Reference:	WELL @ 4953.0ft (Original Well Elev)
Well:	ROSS 8-60 18-7-2	North Reference:	True
Wellbore:	Wellbore #1	Survey Calculation Method:	Minimum Curvature
Design:	Design #1	Database:	EDM 5000.16 Single User Db

Planned Survey

Measured Depth (ft)	Inclination (°)	Azimuth (°)	Vertical Depth (ft)	+N/-S (ft)	+E/-W (ft)	Vertical Section (ft)	Dogleg Rate (°/100ft)	Build Rate (°/100ft)	Turn Rate (°/100ft)
6,000.0	5.25	260.21	5,671.8	-291.8	-1,690.8	4.1	2.00	-2.00	0.00
6,100.0	3.25	260.21	5,771.6	-293.0	-1,698.1	4.1	2.00	-2.00	0.00
6,200.0	1.25	260.21	5,871.5	-293.7	-1,702.0	4.1	2.00	-2.00	0.00
6,262.5	0.00	0.00	5,934.0	-293.8	-1,702.7	4.1	2.00	-2.00	0.00
Start Build 10.00									
6,300.0	3.75	0.88	5,971.4	-292.6	-1,702.7	5.3	10.00	10.00	0.00
6,400.0	13.75	0.88	6,070.2	-277.4	-1,702.4	20.2	10.00	10.00	0.00
6,500.0	23.75	0.88	6,164.7	-245.3	-1,701.9	51.8	10.00	10.00	0.00
6,600.0	33.75	0.88	6,252.3	-197.3	-1,701.2	98.9	10.00	10.00	0.00
6,700.0	43.75	0.88	6,330.2	-134.8	-1,700.2	160.3	10.00	10.00	0.00
6,800.0	53.75	0.88	6,396.0	-59.7	-1,699.1	234.1	10.00	10.00	0.00
6,900.0	63.75	0.88	6,447.9	25.7	-1,697.8	318.0	10.00	10.00	0.00
7,000.0	73.75	0.88	6,484.1	118.7	-1,696.4	409.4	10.00	10.00	0.00
7,100.0	83.75	0.88	6,503.5	216.7	-1,694.9	505.6	10.00	10.00	0.00
7,162.5	90.00	0.88	6,507.0	279.1	-1,693.9	566.9	10.00	10.00	0.00
Start DLS 0.02 TFO 180.00									
7,200.0	89.99	0.88	6,507.0	316.5	-1,693.3	603.7	0.02	-0.02	0.00
7,300.0	89.97	0.88	6,507.0	416.5	-1,691.8	701.9	0.02	-0.02	0.00
7,312.7	89.97	0.88	6,507.0	429.2	-1,691.6	714.4	0.00	0.00	0.00
Start DLS 0.01 TFO -83.87 - ROSS 8-60 18-7-2 BPI									
7,400.0	89.97	0.87	6,507.0	516.5	-1,690.3	800.2	0.01	0.00	-0.01
7,500.0	89.97	0.86	6,507.1	616.5	-1,688.8	898.4	0.01	0.00	-0.01
7,600.0	89.97	0.86	6,507.2	716.5	-1,687.3	996.6	0.01	0.00	-0.01
7,700.0	89.97	0.85	6,507.2	816.5	-1,685.8	1,094.9	0.01	0.00	-0.01
7,800.0	89.97	0.84	6,507.3	916.5	-1,684.3	1,193.1	0.01	0.00	-0.01
7,900.0	89.97	0.83	6,507.3	1,016.5	-1,682.9	1,291.4	0.01	0.00	-0.01
8,000.0	89.97	0.83	6,507.4	1,116.4	-1,681.4	1,389.6	0.01	0.00	-0.01
8,100.0	89.97	0.82	6,507.4	1,216.4	-1,680.0	1,487.8	0.01	0.00	-0.01
8,200.0	89.97	0.81	6,507.4	1,316.4	-1,678.5	1,586.1	0.01	0.00	-0.01
8,300.0	89.98	0.81	6,507.5	1,416.4	-1,677.1	1,684.3	0.01	0.00	-0.01
8,400.0	89.98	0.80	6,507.5	1,516.4	-1,675.7	1,782.6	0.01	0.00	-0.01
8,500.0	89.98	0.79	6,507.6	1,616.4	-1,674.3	1,880.8	0.01	0.00	-0.01
8,600.0	89.98	0.79	6,507.6	1,716.4	-1,673.0	1,979.1	0.01	0.00	-0.01
8,700.0	89.98	0.78	6,507.7	1,816.4	-1,671.6	2,077.4	0.01	0.00	-0.01
8,800.0	89.98	0.77	6,507.7	1,916.4	-1,670.2	2,175.6	0.01	0.00	-0.01
8,900.0	89.98	0.76	6,507.7	2,016.4	-1,668.9	2,273.9	0.01	0.00	-0.01
9,000.0	89.98	0.76	6,507.8	2,116.4	-1,667.6	2,372.1	0.01	0.00	-0.01
9,100.0	89.98	0.75	6,507.8	2,216.3	-1,666.3	2,470.4	0.01	0.00	-0.01
9,200.0	89.98	0.74	6,507.8	2,316.3	-1,665.0	2,568.7	0.01	0.00	-0.01
9,300.0	89.98	0.74	6,507.9	2,416.3	-1,663.7	2,667.0	0.01	0.00	-0.01
9,400.0	89.98	0.73	6,507.9	2,516.3	-1,662.4	2,765.2	0.01	0.00	-0.01
9,500.0	89.98	0.72	6,507.9	2,616.3	-1,661.1	2,863.5	0.01	0.00	-0.01
9,600.0	89.98	0.72	6,507.9	2,716.3	-1,659.9	2,961.8	0.01	0.00	-0.01

Survey Report

Company:	Bison Oil & Gas II, LLC	Local Co-ordinate Reference:	Well ROSS 8-60 18-7-2
Project:	WELD COUNTY, COLORADO (NAD 83)	TVD Reference:	WELL @ 4953.0ft (Original Well Elev)
Site:	ROSS 8-60 18 SESW & SWSE SEC 18 T8N R60W 6th P.M.	MD Reference:	WELL @ 4953.0ft (Original Well Elev)
Well:	ROSS 8-60 18-7-2	North Reference:	True
Wellbore:	Wellbore #1	Survey Calculation Method:	Minimum Curvature
Design:	Design #1	Database:	EDM 5000.16 Single User Db

Planned Survey									
Measured Depth (ft)	Inclination (°)	Azimuth (°)	Vertical Depth (ft)	+N/-S (ft)	+E/-W (ft)	Vertical Section (ft)	Dogleg Rate (°/100ft)	Build Rate (°/100ft)	Turn Rate (°/100ft)
9,700.0	89.99	0.71	6,508.0	2,816.3	-1,658.6	3,060.1	0.01	0.00	-0.01
9,800.0	89.99	0.70	6,508.0	2,916.3	-1,657.4	3,158.3	0.01	0.00	-0.01
9,900.0	89.99	0.69	6,508.0	3,016.3	-1,656.2	3,256.6	0.01	0.00	-0.01
10,000.0	89.99	0.69	6,508.0	3,116.3	-1,655.0	3,354.9	0.01	0.00	-0.01
10,100.0	89.99	0.68	6,508.1	3,216.3	-1,653.8	3,453.2	0.01	0.00	-0.01
10,200.0	89.99	0.67	6,508.1	3,316.3	-1,652.6	3,551.5	0.01	0.00	-0.01
10,300.0	89.99	0.67	6,508.1	3,416.2	-1,651.4	3,649.8	0.01	0.00	-0.01
10,400.0	89.99	0.66	6,508.1	3,516.2	-1,650.3	3,748.1	0.01	0.00	-0.01
10,500.0	89.99	0.65	6,508.1	3,616.2	-1,649.1	3,846.4	0.01	0.00	-0.01
10,600.0	89.99	0.65	6,508.1	3,716.2	-1,648.0	3,944.7	0.01	0.00	-0.01
10,700.0	89.99	0.64	6,508.2	3,816.2	-1,646.9	4,043.0	0.01	0.00	-0.01
10,800.0	89.99	0.63	6,508.2	3,916.2	-1,645.7	4,141.3	0.01	0.00	-0.01
10,900.0	89.99	0.63	6,508.2	4,016.2	-1,644.7	4,239.6	0.01	0.00	-0.01
11,000.0	90.00	0.62	6,508.2	4,116.2	-1,643.6	4,337.9	0.01	0.00	-0.01
11,100.0	90.00	0.61	6,508.2	4,216.2	-1,642.5	4,436.2	0.01	0.00	-0.01
11,200.0	90.00	0.60	6,508.2	4,316.2	-1,641.4	4,534.5	0.01	0.00	-0.01
11,300.0	90.00	0.60	6,508.2	4,416.2	-1,640.4	4,632.9	0.01	0.00	-0.01
11,400.0	90.00	0.59	6,508.2	4,516.2	-1,639.4	4,731.2	0.01	0.00	-0.01
11,500.0	90.00	0.58	6,508.2	4,616.2	-1,638.3	4,829.5	0.01	0.00	-0.01
11,600.0	90.00	0.58	6,508.2	4,716.2	-1,637.3	4,927.8	0.01	0.00	-0.01
11,700.0	90.00	0.57	6,508.2	4,816.2	-1,636.3	5,026.2	0.01	0.00	-0.01
11,800.0	90.00	0.56	6,508.2	4,916.2	-1,635.3	5,124.5	0.01	0.00	-0.01
11,900.0	90.00	0.56	6,508.2	5,016.2	-1,634.4	5,222.8	0.01	0.00	-0.01
12,000.0	90.00	0.55	6,508.2	5,116.2	-1,633.4	5,321.1	0.01	0.00	-0.01
12,100.0	90.00	0.54	6,508.2	5,216.1	-1,632.4	5,419.5	0.01	0.00	-0.01
12,200.0	90.00	0.53	6,508.2	5,316.1	-1,631.5	5,517.8	0.01	0.00	-0.01
12,300.0	90.01	0.53	6,508.2	5,416.1	-1,630.6	5,616.2	0.01	0.00	-0.01
12,400.0	90.01	0.52	6,508.2	5,516.1	-1,629.7	5,714.5	0.01	0.00	-0.01
12,500.0	90.01	0.51	6,508.2	5,616.1	-1,628.8	5,812.8	0.01	0.00	-0.01
12,600.0	90.01	0.51	6,508.1	5,716.1	-1,627.9	5,911.2	0.01	0.00	-0.01
12,700.0	90.01	0.50	6,508.1	5,816.1	-1,627.0	6,009.5	0.01	0.00	-0.01
12,800.0	90.01	0.49	6,508.1	5,916.1	-1,626.1	6,107.9	0.01	0.00	-0.01
12,900.0	90.01	0.49	6,508.1	6,016.1	-1,625.3	6,206.2	0.01	0.00	-0.01
13,000.0	90.01	0.48	6,508.1	6,116.1	-1,624.4	6,304.6	0.01	0.00	-0.01
13,100.0	90.01	0.47	6,508.1	6,216.1	-1,623.6	6,402.9	0.01	0.00	-0.01
13,200.0	90.01	0.46	6,508.0	6,316.1	-1,622.8	6,501.3	0.01	0.00	-0.01
13,300.0	90.01	0.46	6,508.0	6,416.1	-1,622.0	6,599.7	0.01	0.00	-0.01
13,400.0	90.01	0.45	6,508.0	6,516.1	-1,621.2	6,698.0	0.01	0.00	-0.01
13,500.0	90.01	0.44	6,508.0	6,616.1	-1,620.4	6,796.4	0.01	0.00	-0.01
13,600.0	90.01	0.44	6,507.9	6,716.1	-1,619.6	6,894.8	0.01	0.00	-0.01
13,700.0	90.02	0.43	6,507.9	6,816.1	-1,618.9	6,993.1	0.01	0.00	-0.01
13,800.0	90.02	0.42	6,507.9	6,916.1	-1,618.1	7,091.5	0.01	0.00	-0.01
13,900.0	90.02	0.42	6,507.9	7,016.1	-1,617.4	7,189.9	0.01	0.00	-0.01

Survey Report

Company:	Bison Oil & Gas II, LLC	Local Co-ordinate Reference:	Well ROSS 8-60 18-7-2
Project:	WELD COUNTY, COLORADO (NAD 83)	TVD Reference:	WELL @ 4953.0ft (Original Well Elev)
Site:	ROSS 8-60 18 SESW & SWSE SEC 18 T8N R60W 6th P.M.	MD Reference:	WELL @ 4953.0ft (Original Well Elev)
Well:	ROSS 8-60 18-7-2	North Reference:	True
Wellbore:	Wellbore #1	Survey Calculation Method:	Minimum Curvature
Design:	Design #1	Database:	EDM 5000.16 Single User Db

Planned Survey

Measured Depth (ft)	Inclination (°)	Azimuth (°)	Vertical Depth (ft)	+N/-S (ft)	+E/-W (ft)	Vertical Section (ft)	Dogleg Rate (°/100ft)	Build Rate (°/100ft)	Turn Rate (°/100ft)
14,000.0	90.02	0.41	6,507.8	7,116.1	-1,616.7	7,288.2	0.01	0.00	-0.01
14,100.0	90.02	0.40	6,507.8	7,216.1	-1,616.0	7,386.6	0.01	0.00	-0.01
14,200.0	90.02	0.39	6,507.8	7,316.1	-1,615.3	7,485.0	0.01	0.00	-0.01
14,300.0	90.02	0.39	6,507.7	7,416.1	-1,614.6	7,583.4	0.01	0.00	-0.01
14,400.0	90.02	0.38	6,507.7	7,516.1	-1,613.9	7,681.8	0.01	0.00	-0.01
14,500.0	90.02	0.37	6,507.7	7,616.1	-1,613.3	7,780.2	0.01	0.00	-0.01
14,600.0	90.02	0.37	6,507.6	7,716.1	-1,612.6	7,878.6	0.01	0.00	-0.01
14,700.0	90.02	0.36	6,507.6	7,816.1	-1,612.0	7,976.9	0.01	0.00	-0.01
14,800.0	90.02	0.35	6,507.5	7,916.1	-1,611.4	8,075.3	0.01	0.00	-0.01
14,900.0	90.02	0.35	6,507.5	8,016.1	-1,610.8	8,173.7	0.01	0.00	-0.01
15,000.0	90.03	0.34	6,507.5	8,116.1	-1,610.2	8,272.1	0.01	0.00	-0.01
15,100.0	90.03	0.33	6,507.4	8,216.1	-1,609.6	8,370.5	0.01	0.00	-0.01
15,200.0	90.03	0.32	6,507.4	8,316.1	-1,609.0	8,468.9	0.01	0.00	-0.01
15,300.0	90.03	0.32	6,507.3	8,416.1	-1,608.5	8,567.3	0.01	0.00	-0.01
15,400.0	90.03	0.31	6,507.3	8,516.1	-1,607.9	8,665.7	0.01	0.00	-0.01
15,500.0	90.03	0.30	6,507.2	8,616.1	-1,607.4	8,764.2	0.01	0.00	-0.01
15,600.0	90.03	0.30	6,507.2	8,716.1	-1,606.8	8,862.6	0.01	0.00	-0.01
15,700.0	90.03	0.29	6,507.1	8,816.1	-1,606.3	8,961.0	0.01	0.00	-0.01
15,800.0	90.03	0.28	6,507.1	8,916.1	-1,605.8	9,059.4	0.01	0.00	-0.01
15,900.0	90.03	0.28	6,507.0	9,016.0	-1,605.3	9,157.8	0.01	0.00	-0.01
15,902.8	90.03	0.28	6,507.0	9,018.9	-1,605.3	9,160.6	0.01	0.00	-0.01
Start 149.7 hold at 15902.8 MD - ROSS 8-60 18-7-2 EPI									
16,000.0	90.03	0.28	6,506.9	9,116.0	-1,604.9	9,256.2	0.00	0.00	0.00
16,052.5	90.03	0.28	6,506.9	9,168.6	-1,604.6	9,307.9	0.00	0.00	0.00
TD at 16052.5 - ROSS 8-60 18-7-2 BHL									

Design Targets

Target Name - hit/miss target - Shape	Dip Angle (°)	Dip Dir. (°)	TVD (ft)	+N/-S (ft)	+E/-W (ft)	Northing (m)	Easting (m)	Latitude	Longitude
ROSS 8-60 18-7-2 BHL - plan misses target center by 0.1ft at 16052.5ft MD (6506.9 TVD, 9168.6 N, -1604.6 E) - Point	0.00	0.88	6,507.0	9,168.6	-1,604.5	455,389.86	1,029,297.90	40° 40' 53.951 N	104° 8' 26.995 W
ROSS 8-60 18-7-2 BPI - plan hits target center - Point	0.00	0.88	6,507.0	429.2	-1,691.6	452,726.00	1,029,312.35	40° 39' 27.594 N	104° 8' 28.118 W
ROSS 8-60 18-7-2 EPI - plan hits target center - Point	0.00	0.88	6,507.0	9,018.9	-1,605.3	455,344.22	1,029,298.35	40° 40' 52.471 N	104° 8' 27.006 W

Survey Report

Company:	Bison Oil & Gas II, LLC	Local Co-ordinate Reference:	Well ROSS 8-60 18-7-2
Project:	WELD COUNTY, COLORADO (NAD 83)	TVD Reference:	WELL @ 4953.0ft (Original Well Elev)
Site:	ROSS 8-60 18 SESW & SWSE SEC 18 T8N R60W 6th P.M.	MD Reference:	WELL @ 4953.0ft (Original Well Elev)
Well:	ROSS 8-60 18-7-2	North Reference:	True
Wellbore:	Wellbore #1	Survey Calculation Method:	Minimum Curvature
Design:	Design #1	Database:	EDM 5000.16 Single User Db

Formations						
Measured Depth (ft)	Vertical Depth (ft)	Name	Lithology	Dip (°)	Dip Direction (°)	
3,778.1	3,593.0	Parkman				
4,133.2	3,918.0	Sussex				
5,159.5	4,858.0	Shannon				
6,558.5	6,217.0	Sharon Springs Shale				
6,636.5	6,282.0	Niobrara Formation				
6,649.2	6,292.0	Niobrara A Chalk				
6,810.2	6,402.0	Niobrara B Chalk				
6,866.2	6,432.0	Niobrara B Landing Point				
6,961.3	6,472.0	Niobrara C Chalk				
7,162.5	6,507.0	Niobrara C Landing Point				

Plan Annotations					
Measured Depth (ft)	Vertical Depth (ft)	Local Coordinates			
		+N/-S (ft)	+E/-W (ft)	Comment	
800	800	0	0	Start Build 2.00	
1987	1953	-41	-239	Start 3089.3 hold at 1986.6 MD	
5076	4781	-253	-1464	Start Drop -2.00	
6263	5934	-294	-1703	Start Build 10.00	
7163	6507	279	-1694	Start DLS 0.02 TFO 180.00	
7313	6507	429	-1692	Start DLS 0.01 TFO -83.87	
15,903	6507	9019	-1605	Start 149.7 hold at 15902.8 MD	
16,053	6507	9169	-1605	TD at 16052.5	