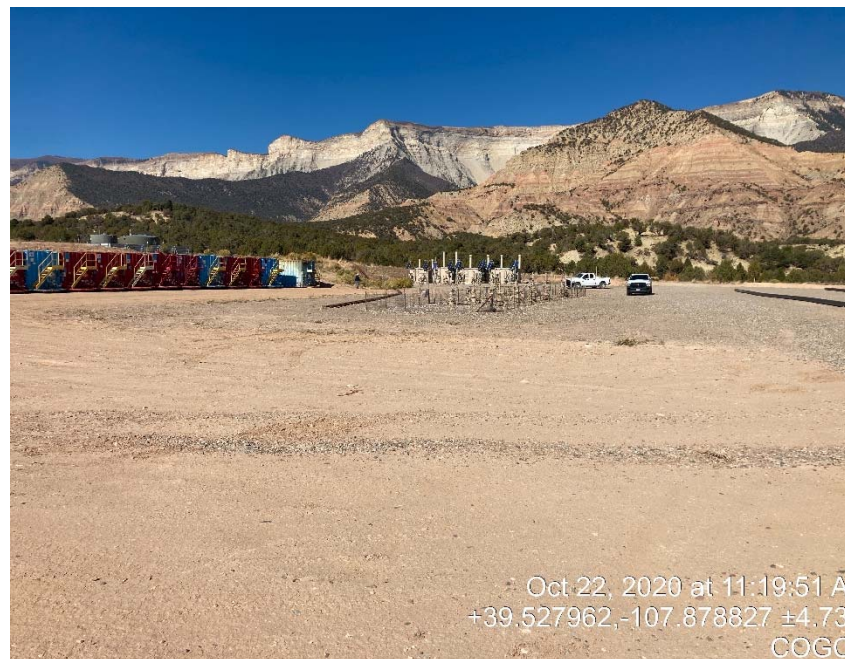


TEP
RWF 311-15
Location # 335571



location



location



COLORADO
Oil & Gas Conservation
Commission
Department of Natural Resources

TEP
RWF 311-15
Location # 335571



Main road to access pad erosion. At top of hill just before compressor station.



Main road to access pad erosion. At top of hill just before compressor station.



TEP
RWF 311-15
Location # 335571



Main road to access pad erosion. At top of hill just before compressor station.



Main road to access pad erosion. At top of hill just before compressor station.



TEP
RWF 311-15
Location # 335571



Debris in and next to new berm.



Berm sediment migration to ditch on main road.



TEP
RWF 311-15
Location # 335571



Waddles that around location are already collecting sediment and quite possibly will fail with the next rain storm.



Waddles that around location are already collecting sediment and quite possibly will fail with the next rain storm.



COLORADO
Oil & Gas Conservation
Commission
Department of Natural Resources

TEP
RWF 311-15
Location # 335571



Waddles that around location are already collecting sediment and quite possibly will fail with the next rain storm.



Outside of berms need stabilization.



COLORADO
Oil & Gas Conservation
Commission
Department of Natural Resources

TEP
RWF 311-15
Location # 335571



Poly pipe location before it was moved onto pad.



Poly pipe location before it was moved onto pad.



TEP
RWF 311-15
Location # 335571



Surface disturbance from poly pipe.



Surface disturbance from poly pipe.

TEP
RWF 311-15
Location # 335571



Surface disturbance from poly pipe.



Surface disturbance from poly pipe.

TEP
RWF 311-15
Location # 335571



Surface disturbance from poly pipe being dragged on to pad.



Surface disturbance from poly pipe being dragged on to pad.



COLORADO
Oil & Gas Conservation
Commission
Department of Natural Resources

TEP
RWF 311-15
Location # 335571



Surface disturbance from poly pipe being dragged on to pad.



Surface disturbance from poly pipe being dragged on to pad. Truck has degraded integrity of berm.

TEP
RWF 311-15
Location # 335571



Surface disturbance from poly pipe being dragged on to pad.



Top soil stock pile need stabilization.



TEP
RWF 311-15
Location # 335571



Top soil stock pile need stabilization.



Top soil stock pile need stabilization.



TEP
RWF 311-15
Location # 335571



Top soil stock pile has migrated past waddles



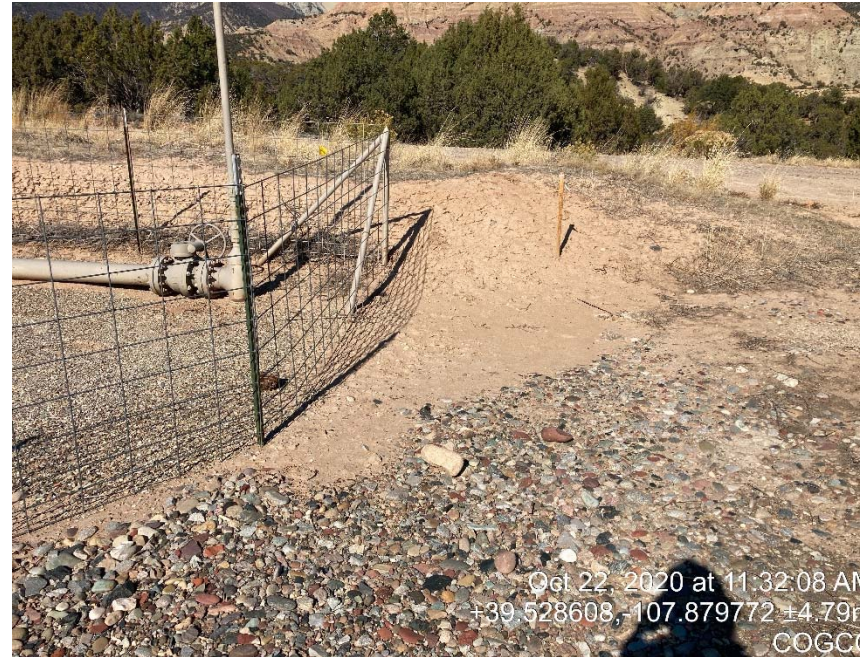
Top soil stock pile has migrated past waddles



TEP
RWF 311-15
Location # 335571



Sediment migration



Sediment migration



TEP
RWF 311-15
Location # 335571



Dead man needs re marked



Tanks are open and can allow wildlife egress.



COLORADO
Oil & Gas Conservation
Commission
Department of Natural Resources

TEP
RWF 311-15
Location # 335571



Sediment migration BMP's need to be addressed.



BMP's need to be addressed.



COLORADO
Oil & Gas Conservation
Commission
Department of Natural Resources