

**NEXTier****Job Summary**

Ticket Number

TN#

BCO-2009-0021

Ticket Date

9/24/2020

COUNTY	COMPANY	API Number
WELD (CO)	ENSIGN	512322735
WELL NAME	RIG	JOB TYPE
PEIKER 42-6	Ensign 354	CM-P2A-PERM.
SURFACE WELL LOCATION	CJES Field Supervisor	CUSTOMER REP
40.51733 104.47264	Toy Yates	Matt McGraw
EMPLOYEES		
Tony Yates	Troy	
Winston Bel verhey	Sergio	

**WELL PROFILE**

Max Treating Pressure (psi):	Bottom Hole Static Temperature (°F):
Bottom Hole Circulating Temperature (°F):	Well Type:

**Open Hole**

1	Size (in)	TMD From (ft)	TMD to (ft)	TVD From (Ft)	TVD to (Ft)
	10	1680	818		
2	Size (in)	TMD From (ft)	TMD to (ft)	TVD From (Ft)	TVD to (Ft)
	14	818	718		

**Casing/Tubing/Drill Pipe**

Type	Size (in)	Weight (lb/ft)	Grade	TMD From (ft)	TMD to (ft)	TVD From (Ft)	TVD to (Ft)
Surface	8 5/8	24		718	0		
Type	Size (in)	Weight (lb/ft)	Grade	TMD From (ft)	TMD to (ft)	TVD From (Ft)	TVD to (Ft)
Type	Size (in)	Weight (lb/ft)	Grade	TMD From (ft)	TMD to (ft)	TVD From (Ft)	TVD to (Ft)

**CEMENT DATA**

<b>Stage 1:</b>	From Depth (ft):	1730	To Depth (ft):	1480
Type: Stub Plug	Volume (sacks):	110	Volume (bbls):	22.5
Cement & Additives:		Density (ppg)	Yield (ft³/sk)	Water Req.
100% G cement + 1% calcium		15.8	1.15	5.00
<b>Stage 2:</b>	From Depth (ft):	818	To Depth (ft):	32
Type: Surface Plug	Volume (sacks):	272	Volume (bbls):	56
Cement & Additives:		Density (ppg)	Yield (ft³/sk)	Water Req.
100% G cement		15.8	1.15	5.00
<b>Stage 3:</b>	From Depth (ft):	32	To Depth (ft):	0
Type: Top Off	Volume (sacks):	10	Volume (bbls):	2
Cement & Additives:		Density (ppg)	Yield (ft³/sk)	Water Req.
100% G Cement		15.8	1.15	5.00
<b>Stage 4:</b>	From Depth (ft):		To Depth (ft):	
Type:	Volume (sacks):		Volume (bbls):	
Cement & Additives:		Density (ppg)	Yield (ft³/sk)	Water Req.

**SUMMARY**

Preflushes:	10 bbls of Fresh Water	Calculated Displacement (bbl):	Stage 1	Stage 2
	bbls of	Actual Displacement (bbl):	5.7	
	bbls of		5.7	
Total Preflush/Spacer Volume (bbl):	10	Plug Bump (Y/N):		Bump Pressure (psi):
Total Slurry Volume (bbl):	80.5	Lost Returns (Y/N):		(if Y, when)
Total Fluid Pumped	97.2			
Returns to Surface:	Cement	2 bbls		

Job Notes (fluids pumped / procedures / tools / etc.):

See job log for details

Customer Representative Signature:

Thank You For Using  
NexTier Completion Solutions

# NEXTIER

	<div> <div>Joy Yates</div> <div>Service Supervisor</div> </div> <div> <div>24-Sep-20</div> <div>Date</div> </div>







Client  
Ticket No. BCO-2009-0021  
Location  
Comments

Client Rep  
Well Name  
Job Type  
Matt McGraw  
Pleker 42-6  
Abandonment Plugs

Supervisor  
Unit No.  
Service District  
Job Date  
Tony Yates  
445084  
Brighton CO  
09/24/2020

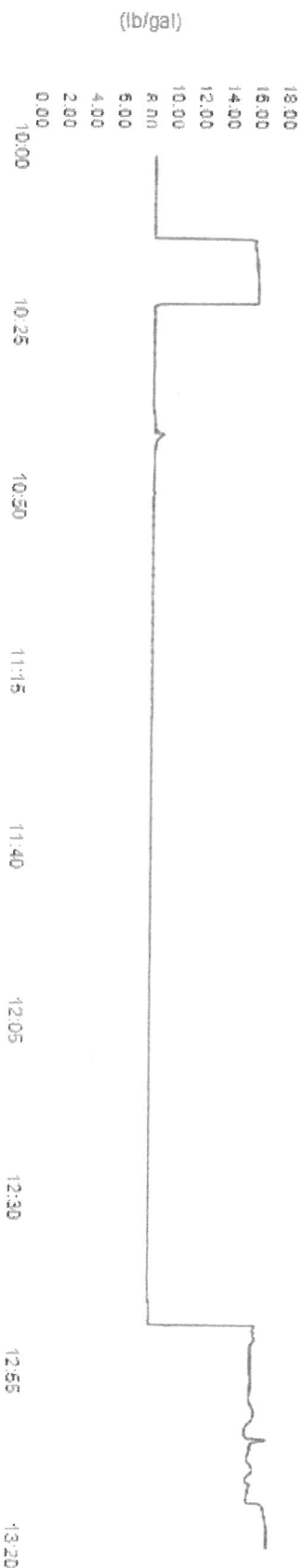
Unit 445084 Rate Total



Unit 445084 Pump Pressure



Unit 445084 Density



## RMWS - Service Ticket & Invoice:

Rocky Mountain Wireline Service  
2144 Hwy 6 & 50  
Grand Junction, CO 81505  
970-245-9828



Ticket Number  
**113267**

Date  
9/23/2020  
Well  
Peiker 42-6  
Field  
Wattenberg  
County / State  
Weld / Colorado

Services provided for:  
ENSIGN WELL SERVICE  
2154 Hwy 6 & 50  
Grand Junction, Colorado 81505

Services ordered by:  
Logan Hancock  
(970)712-4498  
Logan.Hancock@ensignenergy.com

### Job Data

Field Office  
Johnstown-  
CO  
Line Truck #  
222  
Crane #  
Pickup  
Truck #  
71  
Explosives Permit  
#

Crew Members  
G. Graham, N. Wells, G. Torres

CSG Size  
4.5"  
WT  
10.5

Zero  
GL W/KB 10'  
Fluid  
Water  
Level  
Surface  
RMWS TD  
6850'  
Corrected  
To Agree  
With  
Dated  
Consultant  
Matt McGraw

Job Notes  
USR0037603

### Travel

Report To Shop  
9/23/2020 9:00 AM MDT  
Arrive At Location  
9/23/2020 1:30 PM MDT  
On Well  
Off well  
Depart Location  
Return To Shop  
Travel Notes

### Activity

#### Logging - Bid Work

Description	From	To	Units Used	Rate	Minimum	Amount
Ensign - CBL from 2,000' or less	0	1720	1.00 Units			\$0.00

#### Miscellaneous - Bid Work

Description	From	To	Units Used	Rate	Minimum	Amount
Ensign - 4 1/2" 10K CIBP @ 5,000' +		6823	1.00 Units			\$0.00
Ensign - Dump Bail 2 SX Cement (STANDARD)		6821	1.00 Units			\$0.00
Ensign - 4 1/2" 10K CIBP @ 5,000' +		6535	1.00 Units			\$0.00
Ensign - Dump Bail 2 SX Cement (STANDARD)		6533	1.00 Units			\$0.00
Ensign - 4 1/2" 10K CIBP @ 5,000' or less		2800	1.00 Units			\$0.00
Ensign - Dump Bail 2 SX Cement (STANDARD)		2798	1.00 Units			\$0.00

#### Pipe Recovery - Bid Work

Description	From	To	Units Used	Rate	Minimum	Amount
Ensign - 4 1/2" Jet Cutter		1680	1.00 Units			\$0.00

Logging - Bid Work \$0.00  
Miscellaneous - Bid Work \$0.00  
Pipe Recovery - Bid Work \$0.00  
Total \$0.00

### Signatures

OilCommand

9/23/2020 1:51 PM MDT

RMWS - Service Ticket & Invoice #113267

Page 1 of 2