



410 17th Street, Suite 1400  
Denver, CO 80202  
(720) 440-6100 phone  
(720) 305-0804 fax

[Bonanzacrk.com](http://Bonanzacrk.com)

September 11, 2020

State of Colorado  
Oil and Gas Conservation Commission  
1120 Lincoln Street, Suite 801  
Denver, CO 80203

**RE: Proposed Wellbore Spacing Unit**  
Pronghorn Federal A-E-31HNB  
Niobrara New Drill  
Lot 3, Section 30, Township 5N, Range 61W, 6th PM  
Weld County, Colorado

Dear Director Murphy,

Bonanza Creek Energy Operating Company, LLC. ("Bonanza Creek") is planning to drill the above captioned well in accordance with the provisions of Colorado Oil and Gas Conservation Commission (COGCC) Rule 318A.e.

Bonanza Creek's proposed wellbore spacing unit consists of:

Township 5N, Range 61W (Weld County):  
Section 30: SWSW (Lot 4)  
Section 31: W2W2 (Lots 1-4)  
Township 5N, Range 62W (Weld County):  
Section 25: SESE  
Section 36: E2E2  
Township 4N, Range 61W (Weld County)  
Section 6: NWNW (Lot 4)

Total acres: 445ac

The 30 day notification time period has passed and we have not yet received any objections to such well locations or proposed spacing unit, therefore Bonanza Creek hereby requests the Director to approve the above mentioned well. Bonanza Creek respectfully requests the COGCC review the enclosed map illustrating the proposed wellbore spacing unit.

Regards,  
Bonanza Creek Energy Operating Company, LLC.

Kate Miller  
Regulatory Specialist

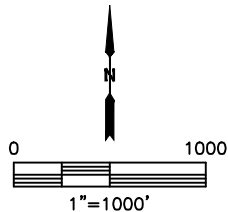
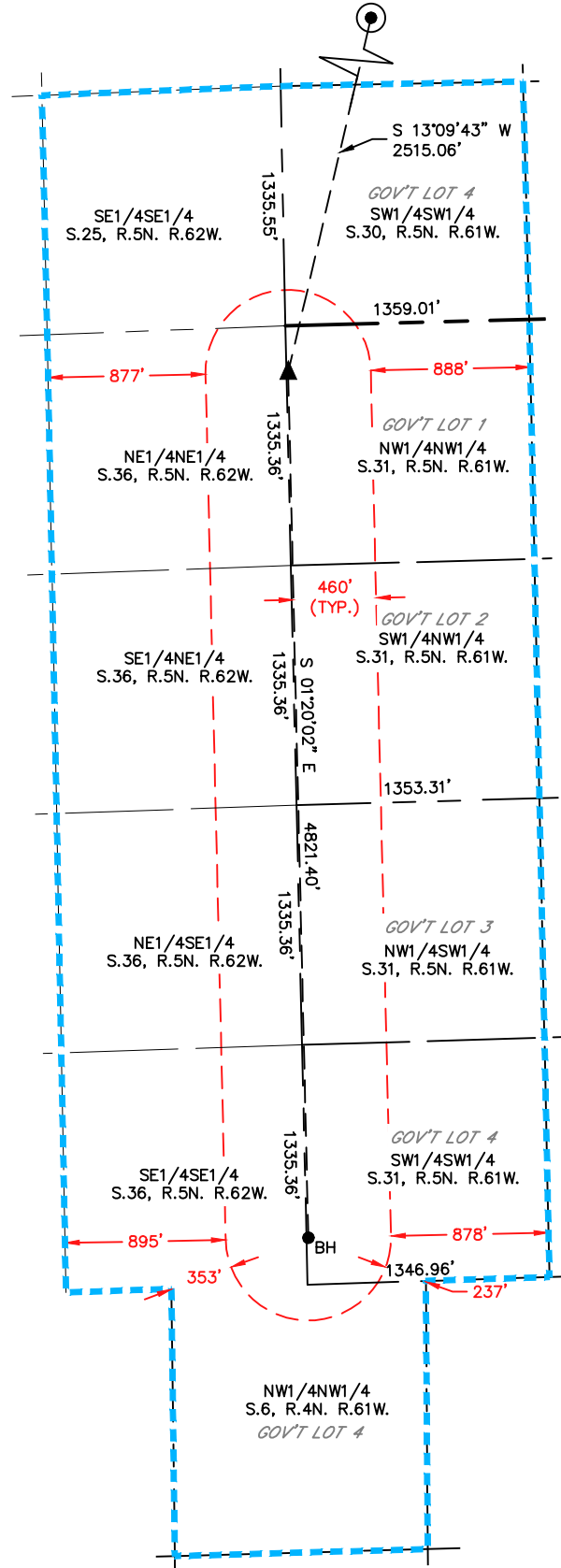


Lat40°, Inc. 6250 W. 10th Street, Unit 2, Greeley, CO 970-515-5294

# SPACING UNIT BUFFER MAP

PRONGHORN FEDERAL A-E-31HNB

SECTION: 30  
TOWNSHIP: 5N  
RANGE: 61W  
6TH. P.M.  
WELD COUNTY, CO



## LEGEND

- = SURFACE HOLE LOCATION (SHL)
- ▲ = ENTRY POINT LOCATION (EP)
- ◆ = TOP OF PRODUCTION ZONE (TPZ)
- <sub>BH</sub> = BOTTOM HOLE LOCATION (BHL)
- ⊙ = EXISTING WELL
- ⊙ = ABANDONED WELL

- = 460' SPACING UNIT BUFFER
- = QUARTER/QUARTER BUFFER

SHL FOOTAGE				SHL LAT °	SHL LONG °	SHL PDOP	SHL ELEV (FT.)	SHL 1/4/1/4	SHL S-T-R
2173	FSL	631	FWL	40.37031	-104.25935	1.7	4526	NWSW	30-5-61

BHL FOOTAGE				BHL LAT °	BHL LONG °	BHL S-T-R	EP FOOTAGE				EP LAT °	EP LONG °	EP S-T-R
260	FSL	10	FWL	40.35038	-104.26137	31-5-61	260	FNL	10	FWL	40.36361	-104.26153	31-5-61

DATE: 9/15/2020  
PROJECT#: 2018185