

**SAMPLING RESULTS
SPILL REPORT #402486573
LINDA #2 LEASE
NENE SEC 30 T2S R52W
WASHINGTON COUNTY COLORADO**

**PREPARED BY:
CORAL PRODUCTION CORPORATION
1600 STOUT ST.
SUITE 1500
DENVER, CO 80202**

OCTOBER 20, 2020

INTRODUCTION

On September 10, 2020 Coral Production Corp. discovered an equipment malfunction at our Linda 2 tank battery in Washington County, Colorado which resulted in the production tank overtopping and the discharge of approximately 130 bbls total fluid into the containment. The well was shut down and a vacuum truck was utilized to remove all free fluid from within the containment. Approximately 36 cubic yards of contaminated soil was removed from the containment and transported to the Denver Arapahoe disposal site. Soil manifests are available upon request. Once all visibly impacted soil was removed, confirmation soil sampling was conducted at the direction of the COGCC. The sampling was conducted on September 25, 2020. Photographs of the containment before and after the removal of fluids are attached.

SAMPLING PROCEDURES

Sampling was conducted at two locations within the containment area after excavation was performed. The samples were taken from the surface down to a depth of six inches. A site map with sample locations is attached. Samples were obtained using a stainless-steel scoop following proper decontamination before and between each sampling. The samples were placed in laboratory supplied glass containers.

LABORATORY METHODOLOGY

Soil samples were placed on ice and transported to SGS Laboratories in Wheat Ridge using chain of custody protocol. The samples were analyzed for Total Petroleum Hydrocarbons (TPH, GRO/GRO – EPA method 8015) and BTEX (EPA method 8260).

RESULTS

The sampling results indicate that petroleum hydrocarbons do not exceed the Table 910 concentrations. A summary of the laboratory analytical reports is attached.

CONCLUSIONS

Based on the analytical results for the Linda 2 spill cleanup, Coral Production Corp. is requesting approval for corrective action completion.

Linda 2 spill sampling
Table 1
Sample date 9/30/20
Soil Sample Results (MDL)

Constituent	Sample ID	ETB	WTB	Units	910-1 MCL
Benzene		ND (0.52)	ND (0.54)	ug/kg	170
Toluene		ND (1.0)	ND (1.1)	ug/kg	85k
Ethylbenzene		ND (0.54)	ND (0.58)	ug/kg	100k
Xylene		ND (1.1)	ND (1.1)	ug/kg	175k
TPH-Diesel Range Organics		40.4	208	mg/kg	500
TPH-Gasoline Range Organics		ND (5.3)	ND (5.9)	mg/kg	500

Legend:

ND = Not detected

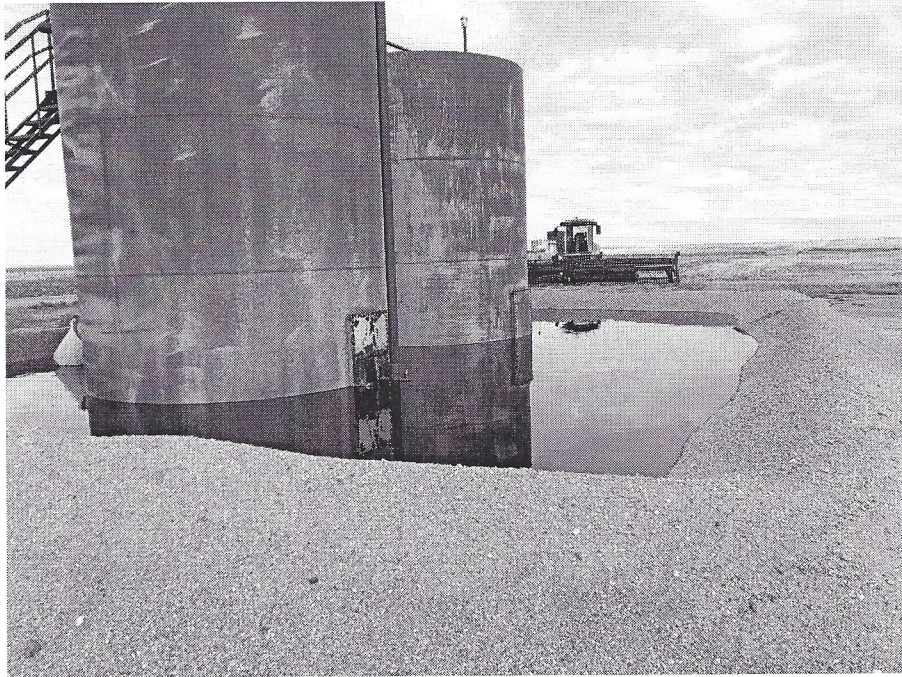
MDL = Method Detection Limit

Sample designations:

ETB= east tank battery

WTB= west tank battery

PHOTOGRAPHS

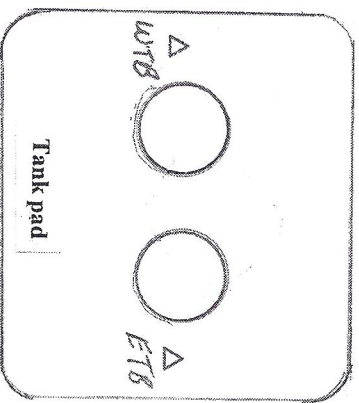


Before fluid recovery



After fluid recovery

LINDA 2 SAMPLING
LOCATIONS

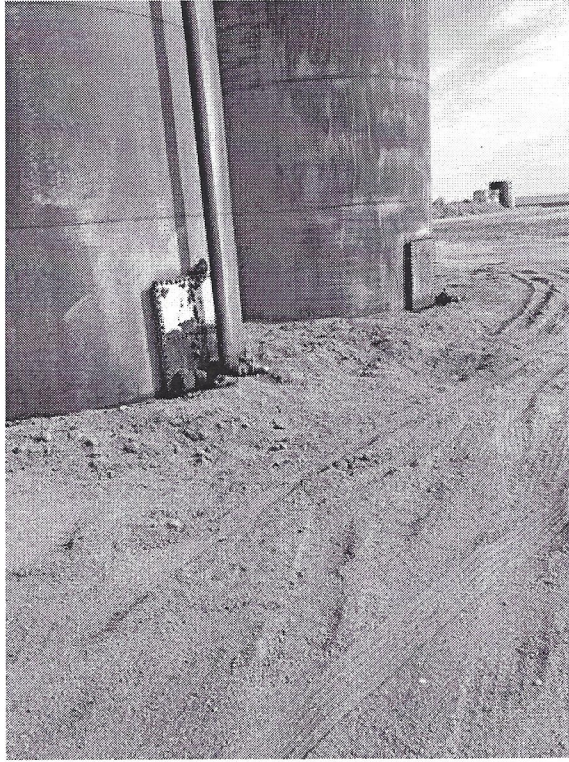


Cropland

Cropland

Sample locations 





After excavation and clean fill

