



# Sector Bond Gamma Ray Collar Correlation Log

[illegible]

<<< Fold Here >>>

All interpretations are opinions based on inferences from electrical or other measurements and we cannot and do not guarantee the accuracy or correctness of any interpretation, and we shall not, except in the case of gross or willful negligence on our part, be liable or responsible for any loss, costs, damages, or expenses incurred or sustained by anyone resulting from any interpretation made by any of our officers, agents or employees. These interpretations are also subject to our general terms and conditions set out in our current Price Schedule.

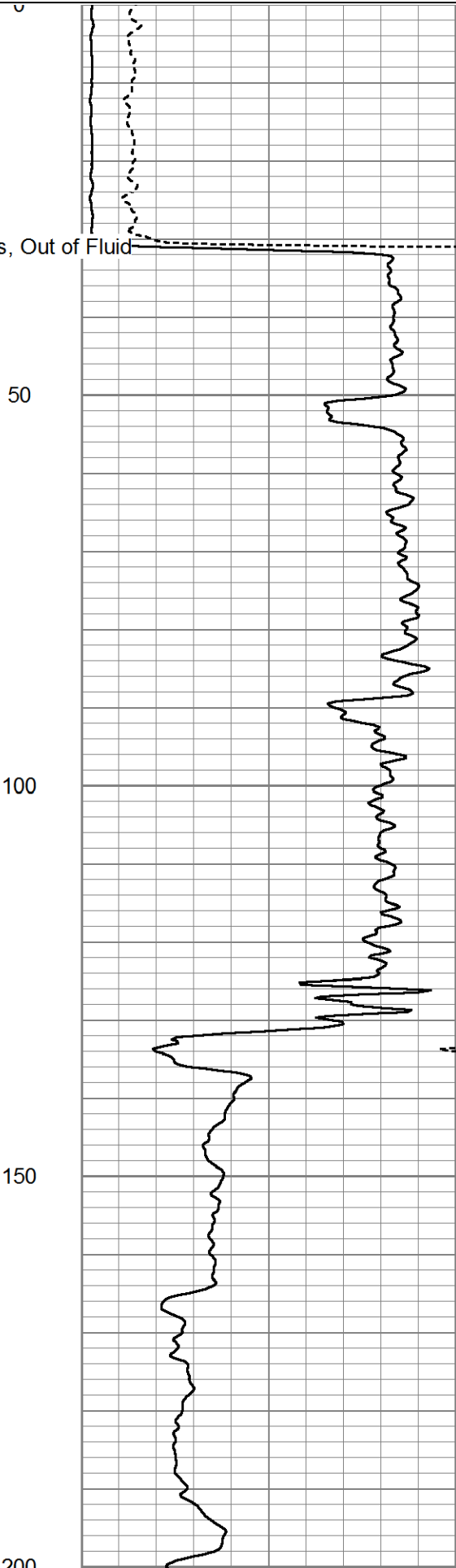
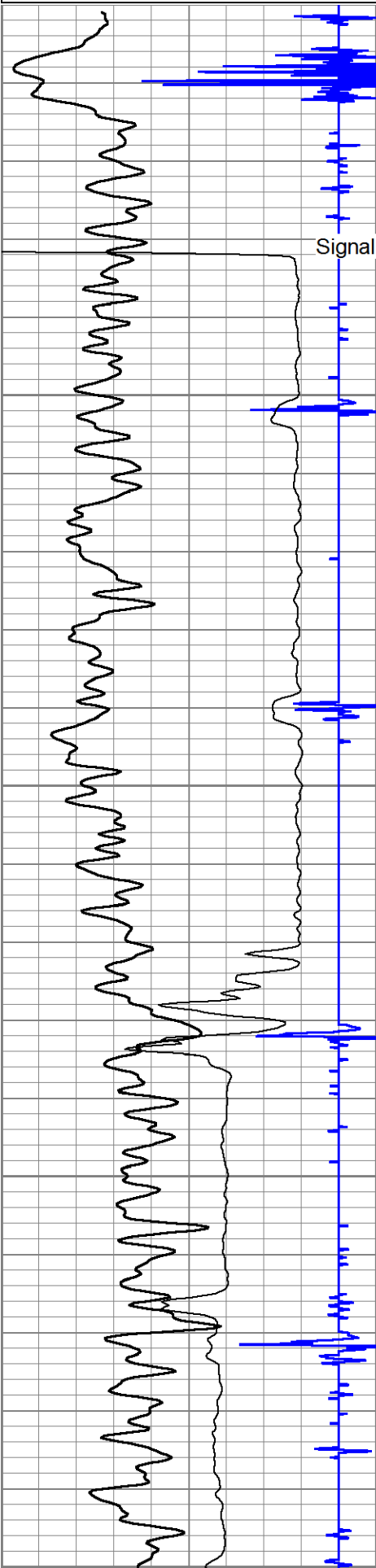
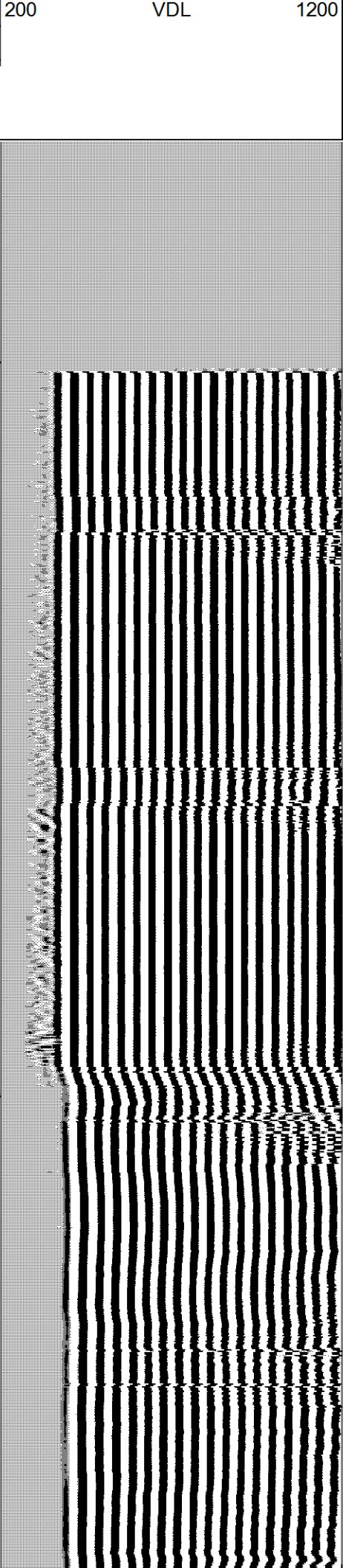
### Comments

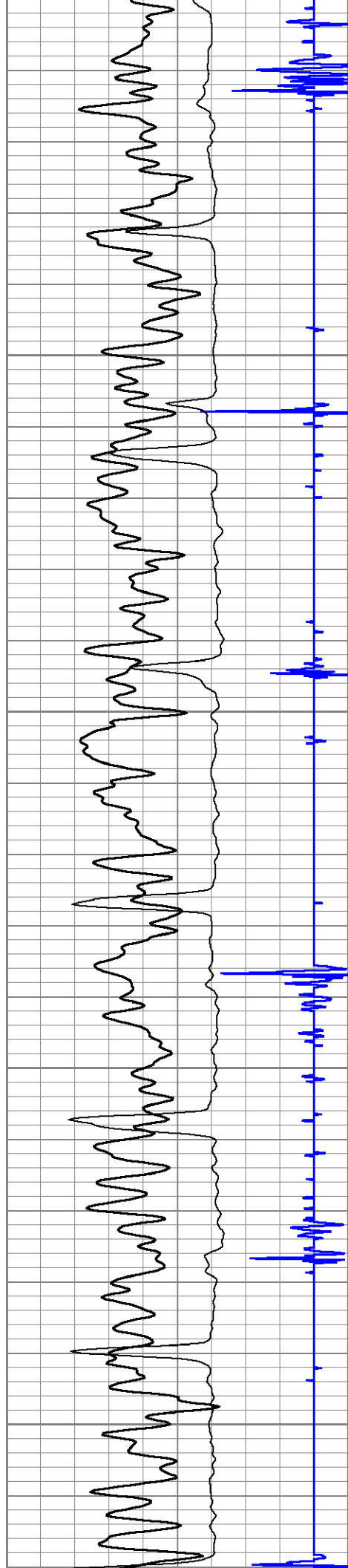
**No log available for correlation**

Database File	state 3.db
Dataset Pathname	pass5
Presentation Format	scbl_dr
Dataset Creation	Mon Sep 28 10:06:13 2020
Charted by	Depth in Feet scaled 1:240

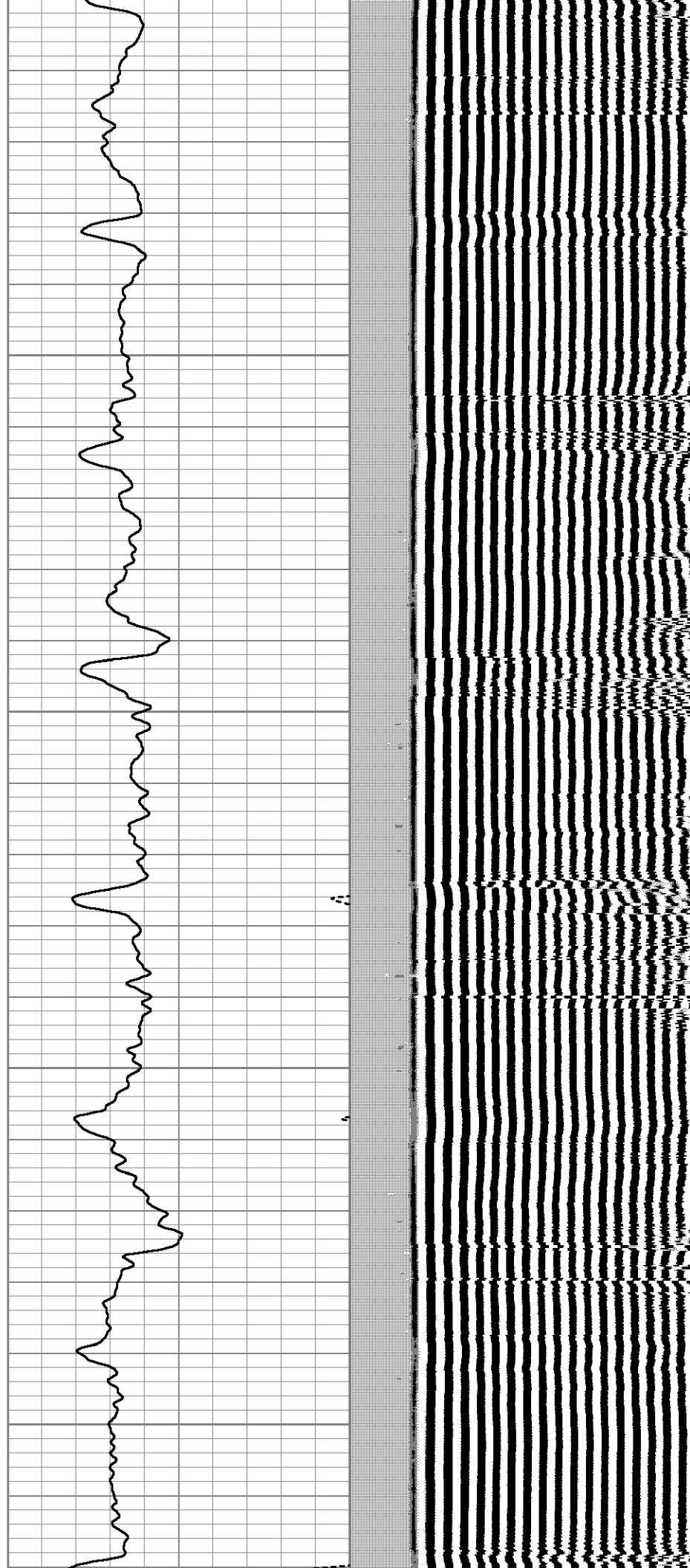
9	Collar Locator	-1
0	Gamma Ray (GAPI)	150
0	Line Speed (ft/min)	100
320	tt3 (usec)	220

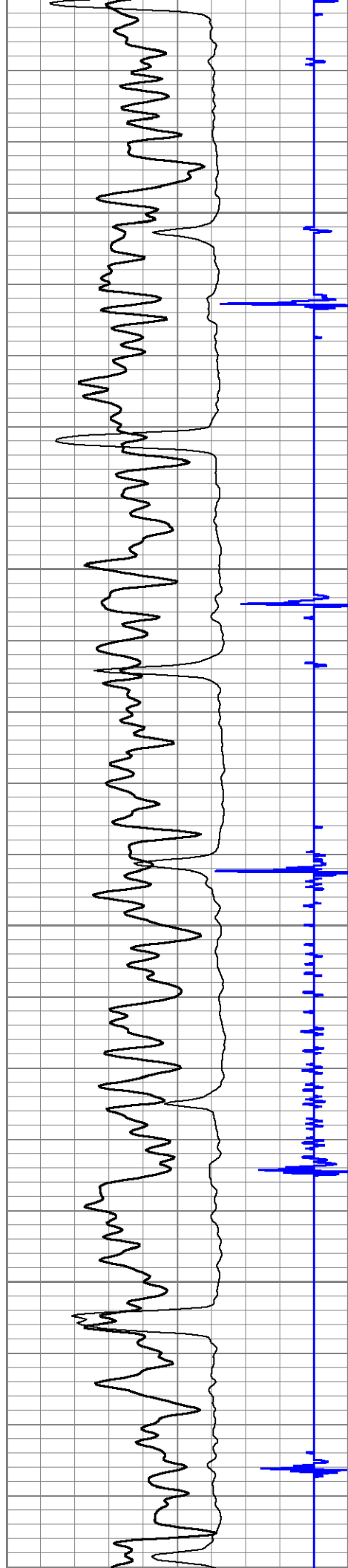
0	Amplified Amplitude (mV)	20
0	Amplitude (mV)	100





200  
250  
300  
350  
400



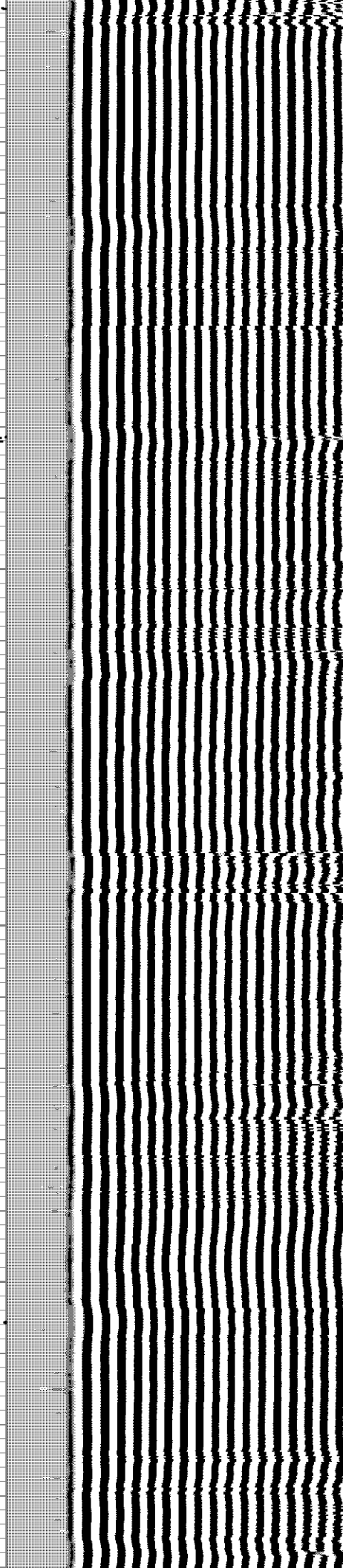
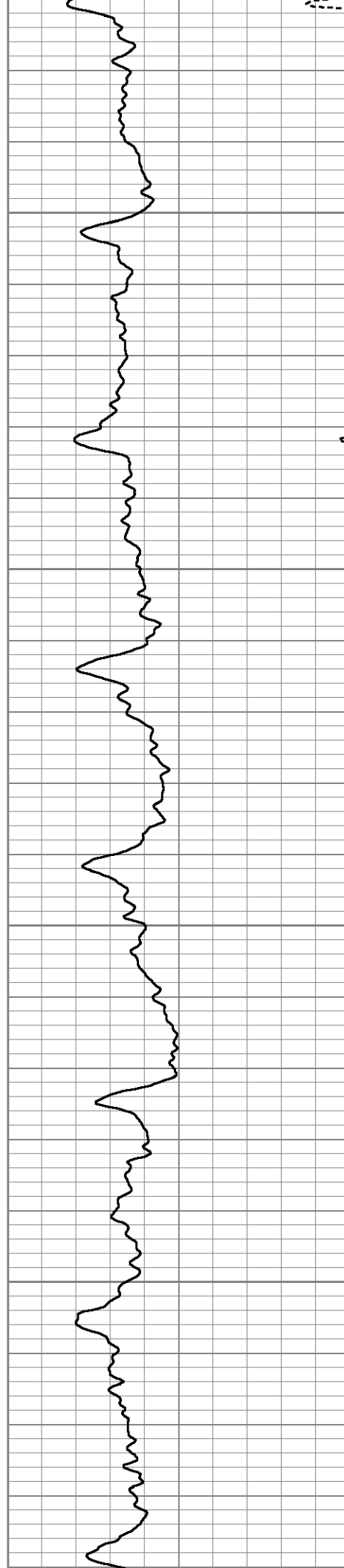


450

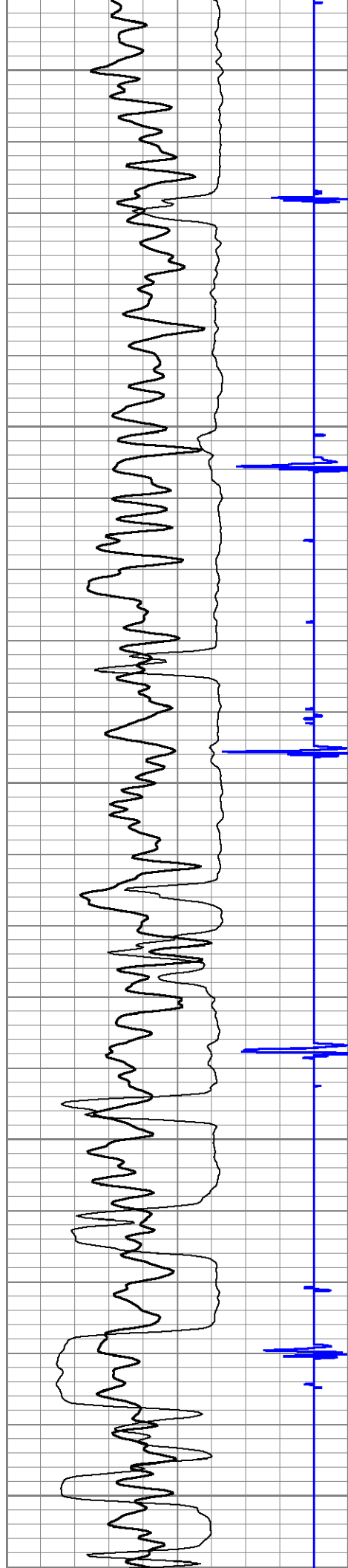
500

550

600







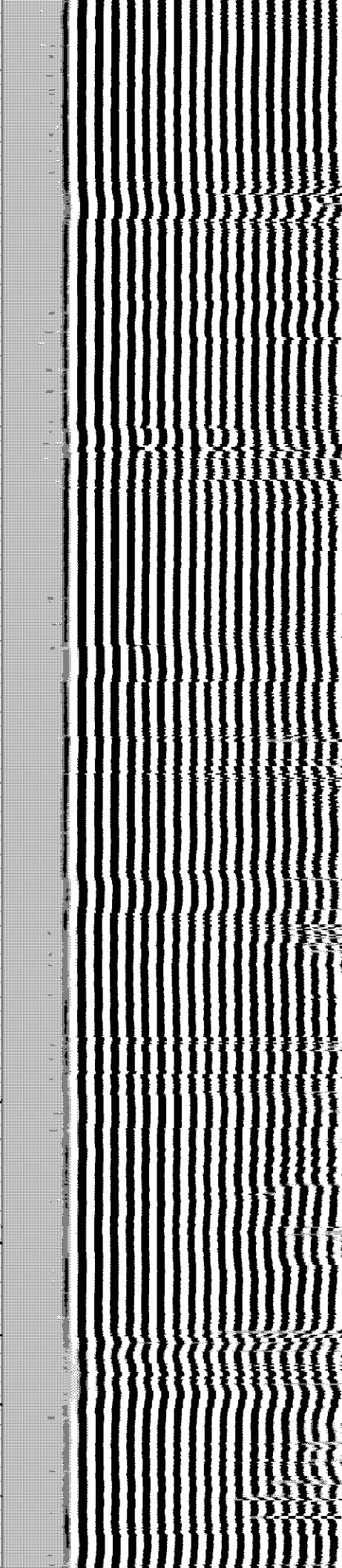
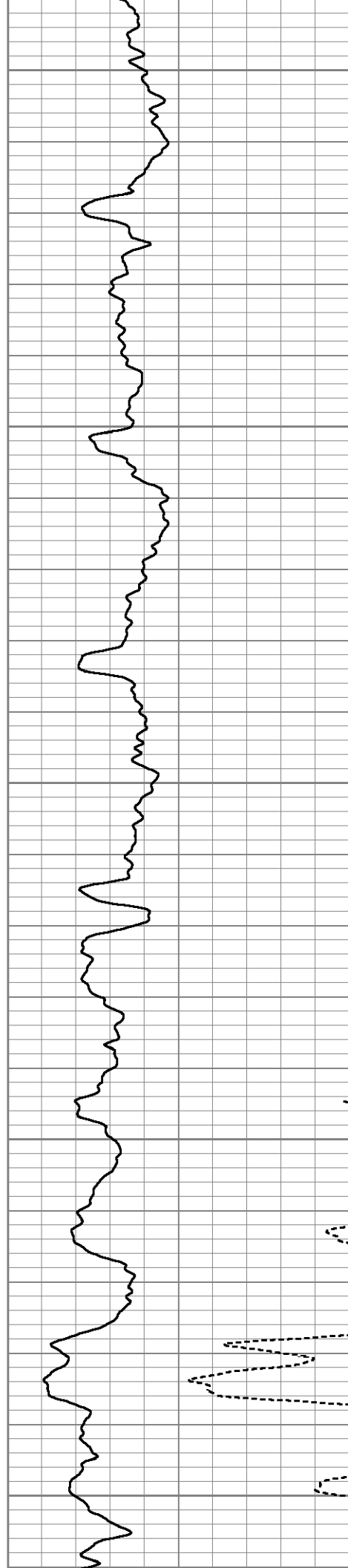
650

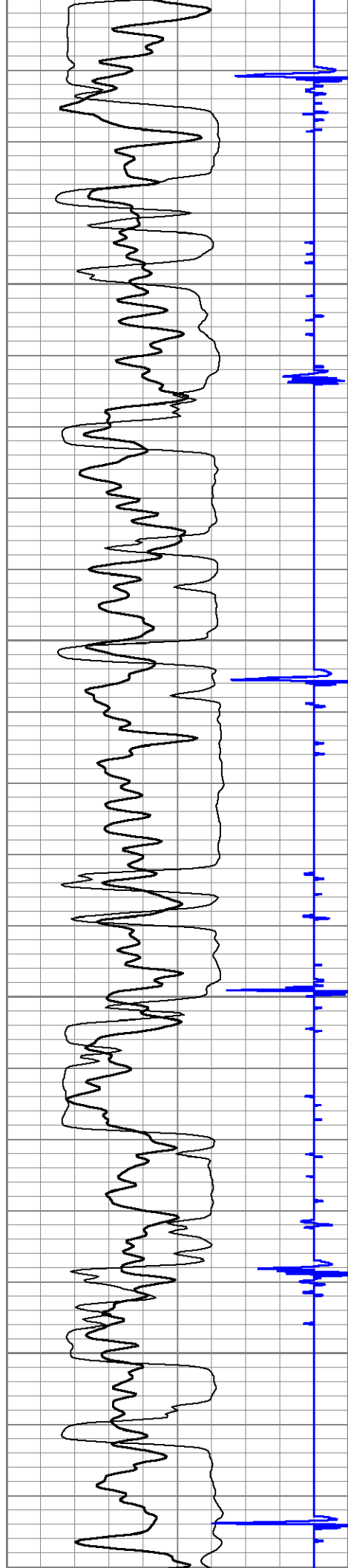
700

750

800

850



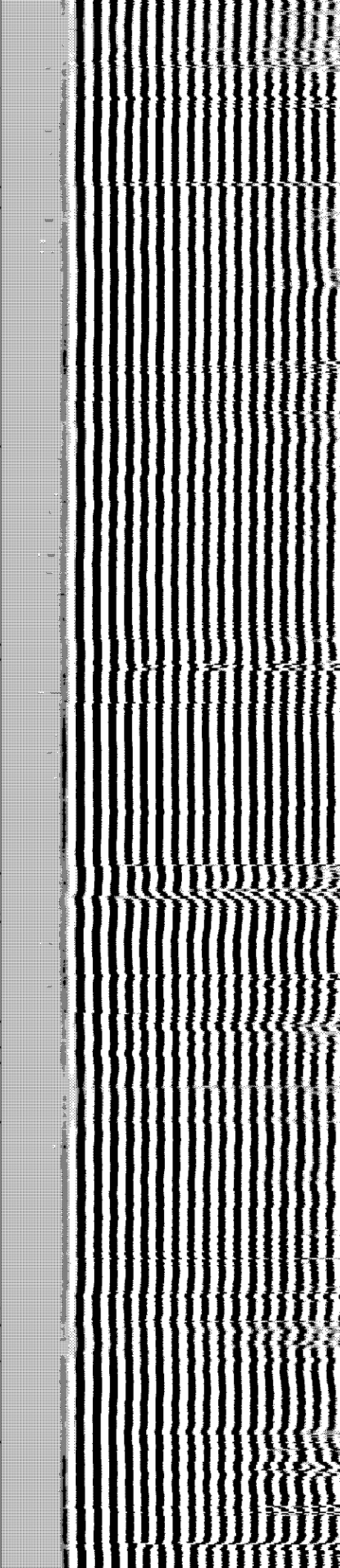
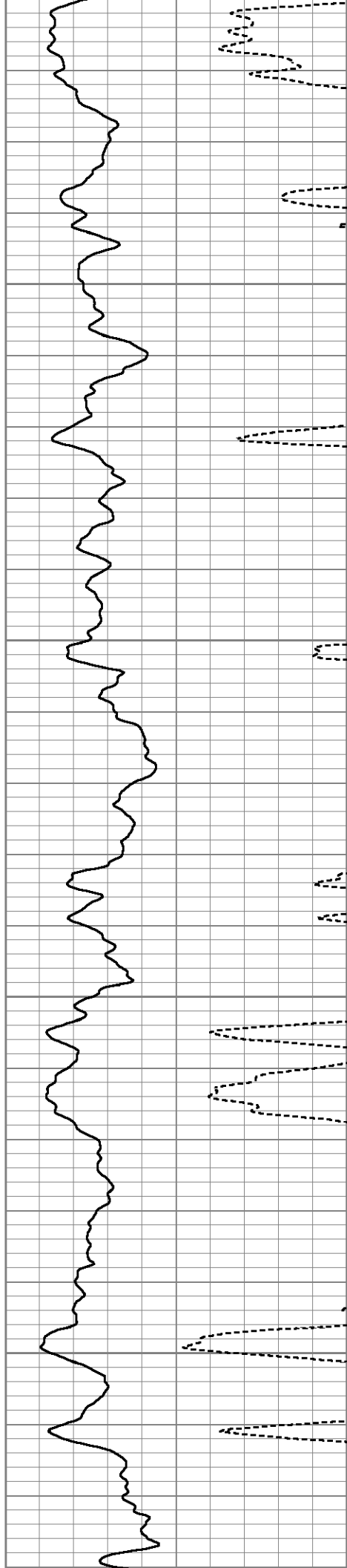


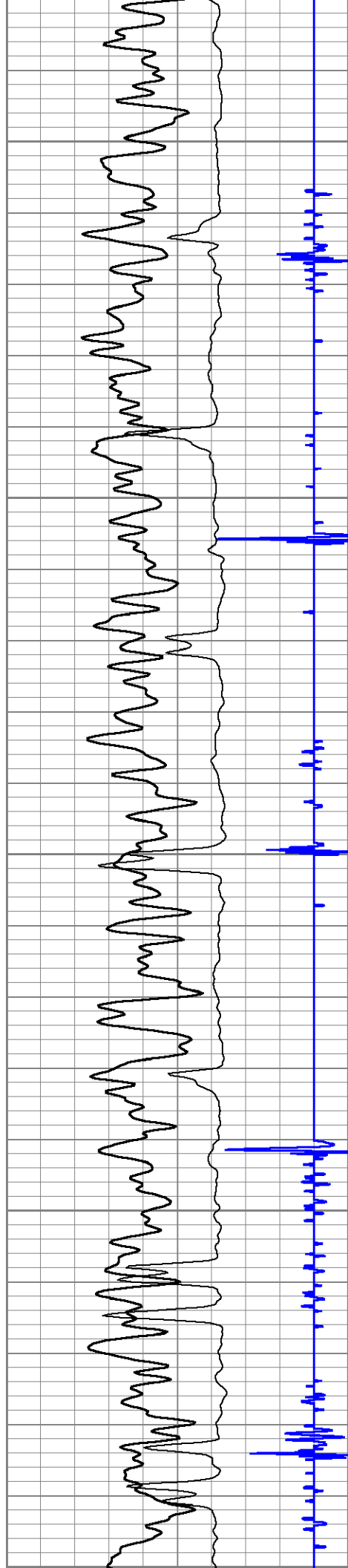
900

950

1000

1050





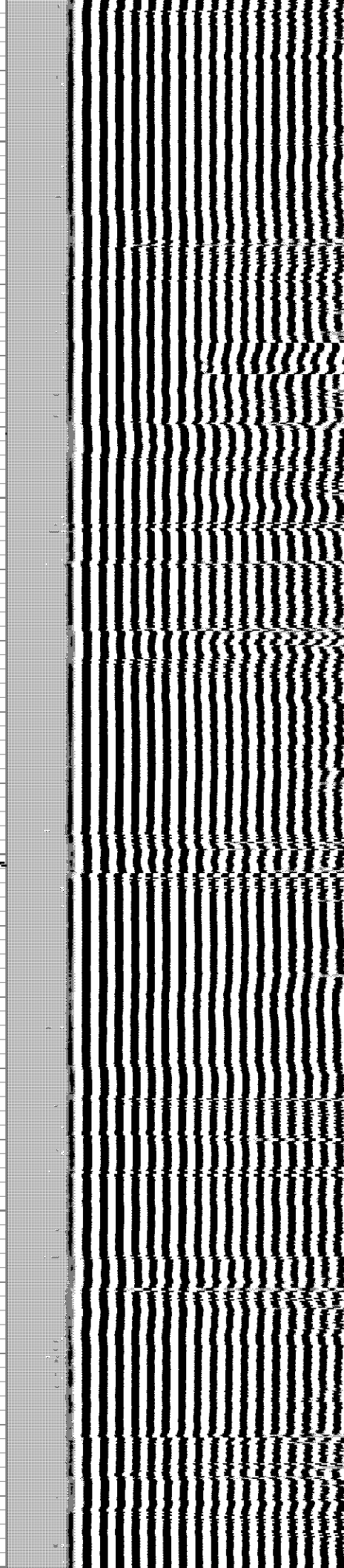
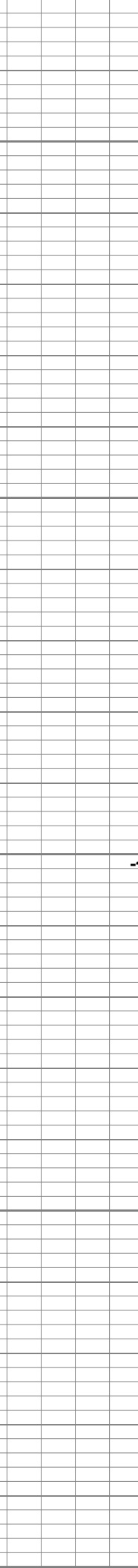
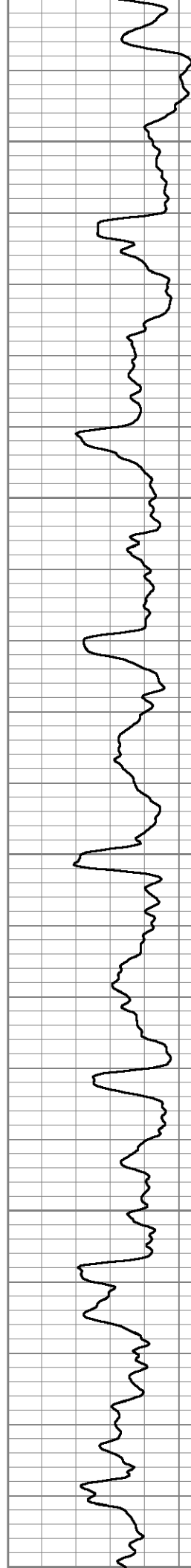
1100

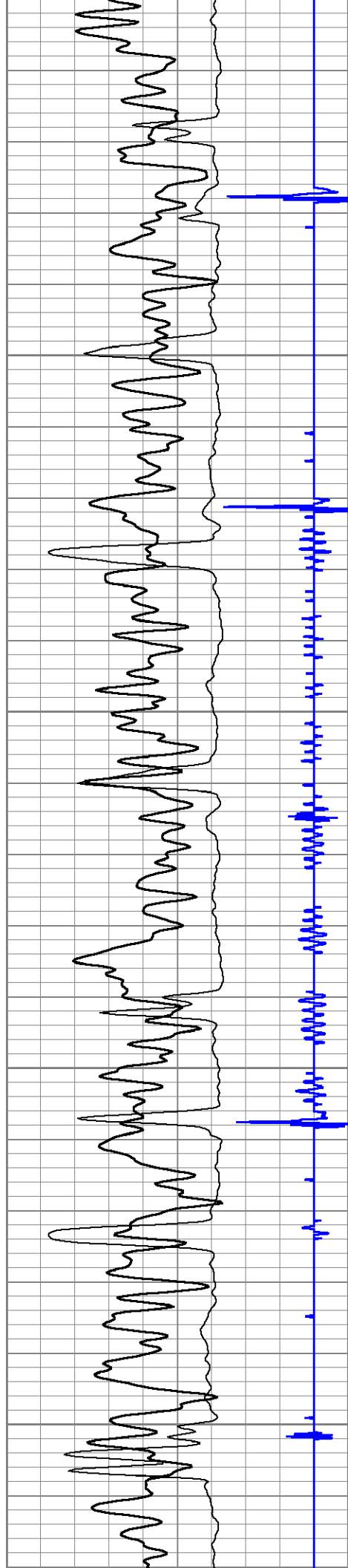
1150

1200

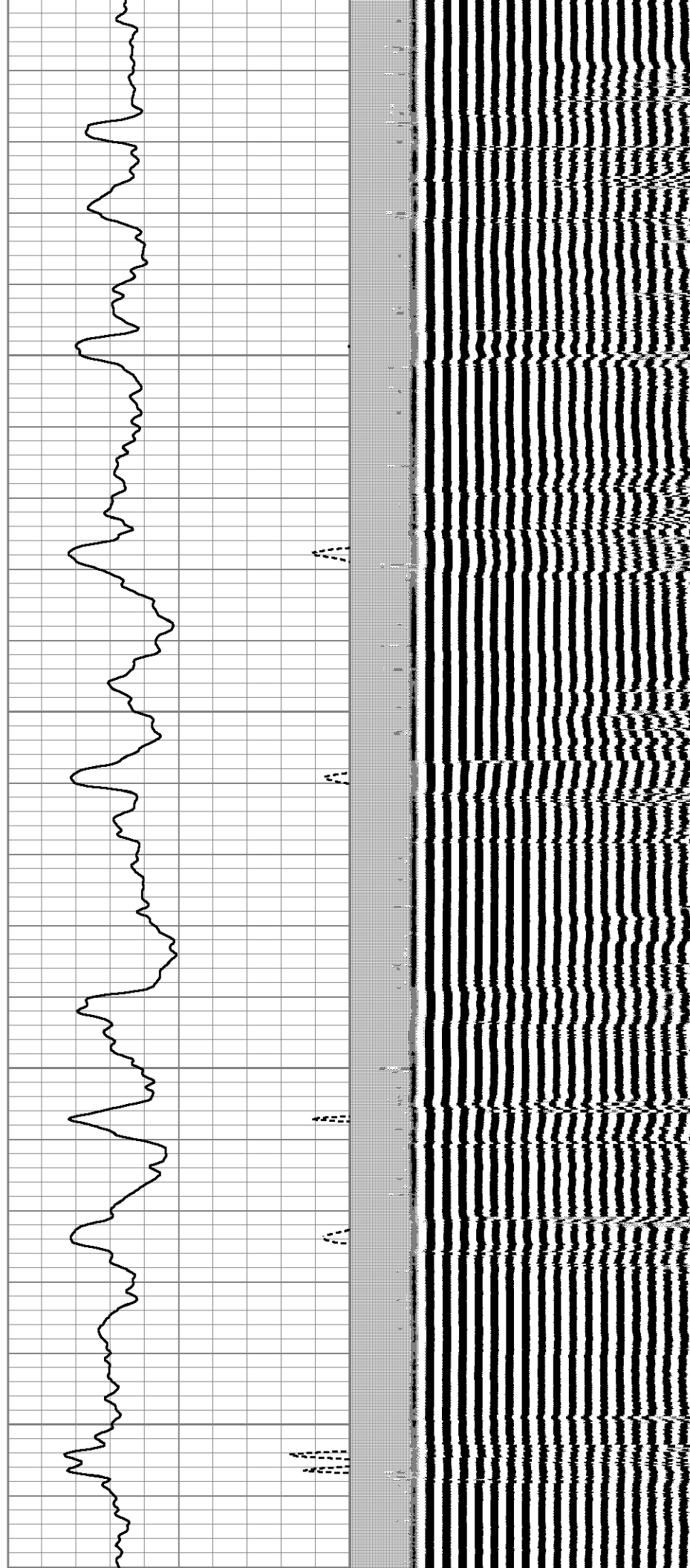
1250

1300

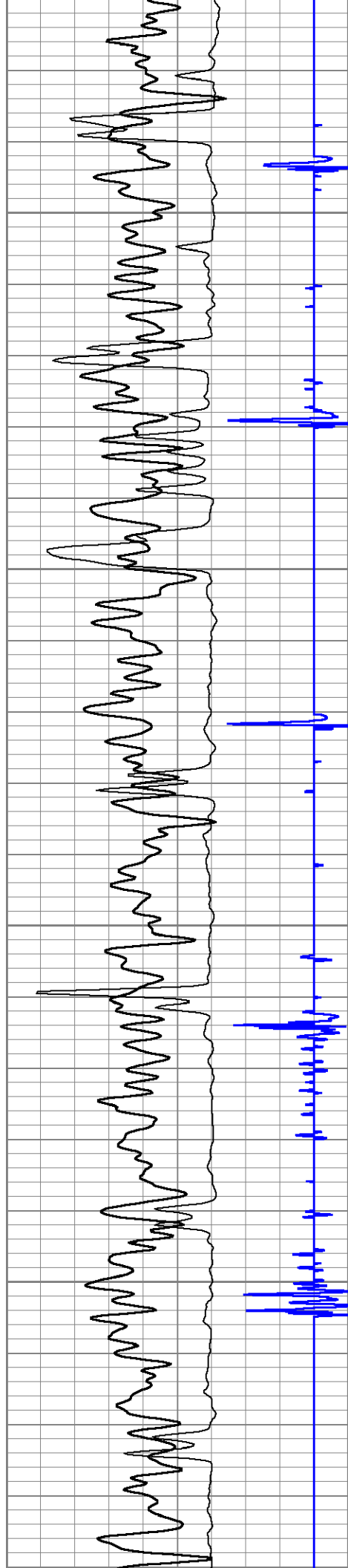




1500  
1350  
1400  
1450  
1500





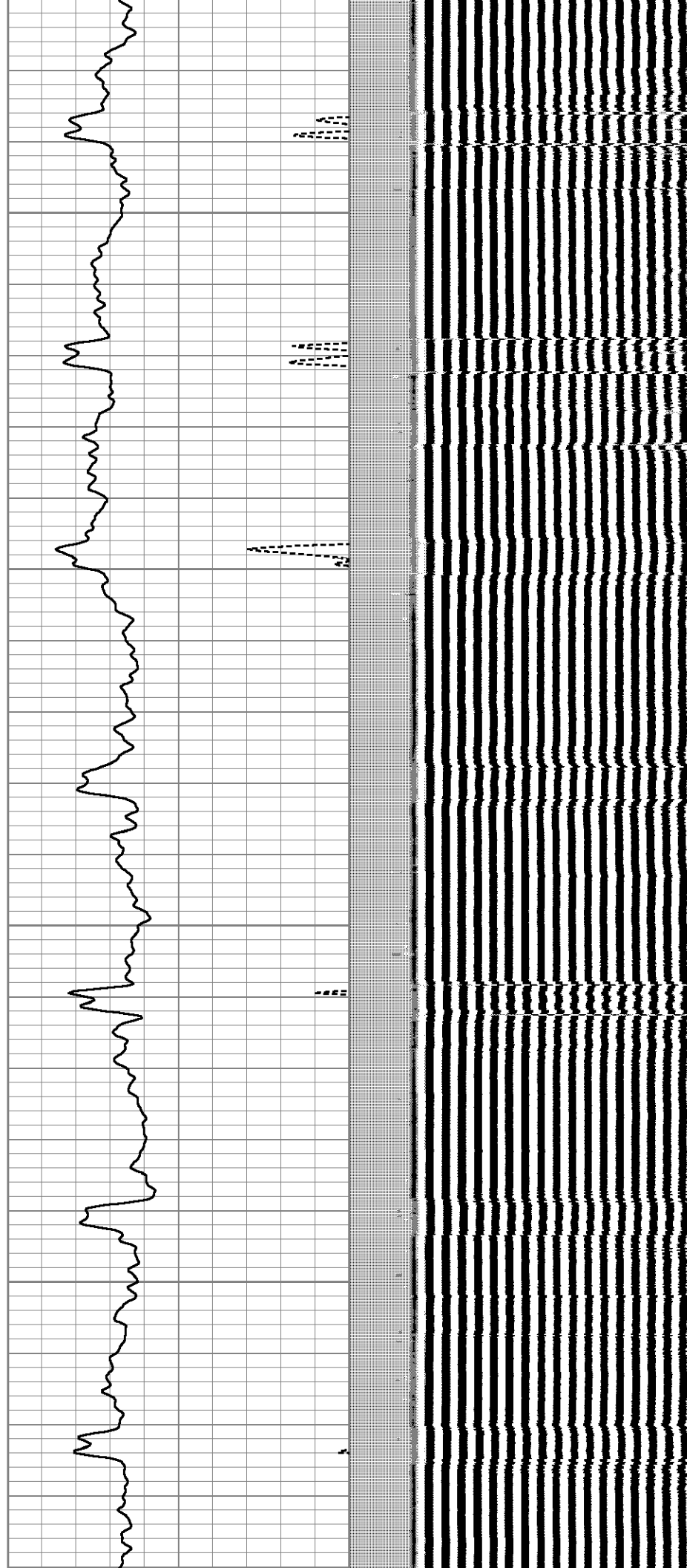


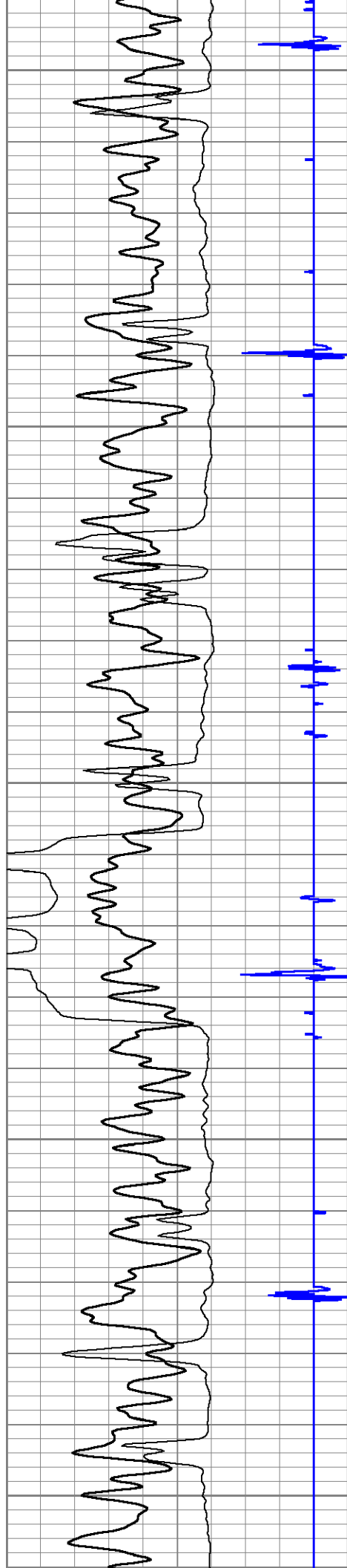
1550

1600

1650

1700





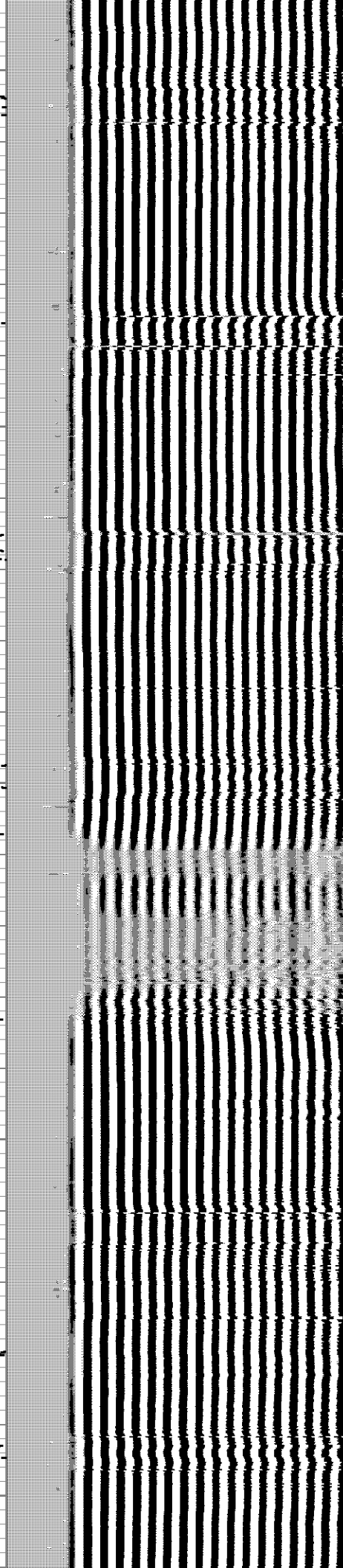
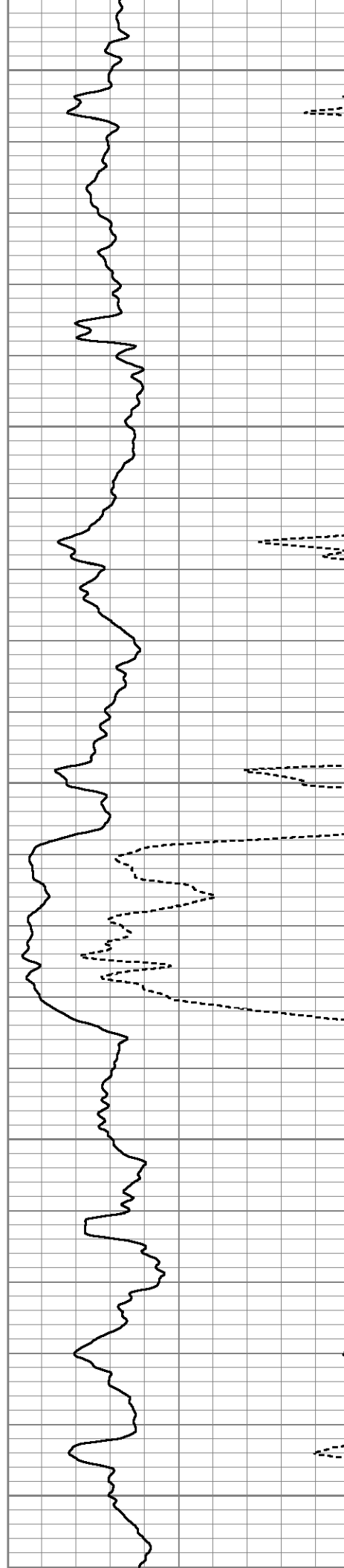
1750

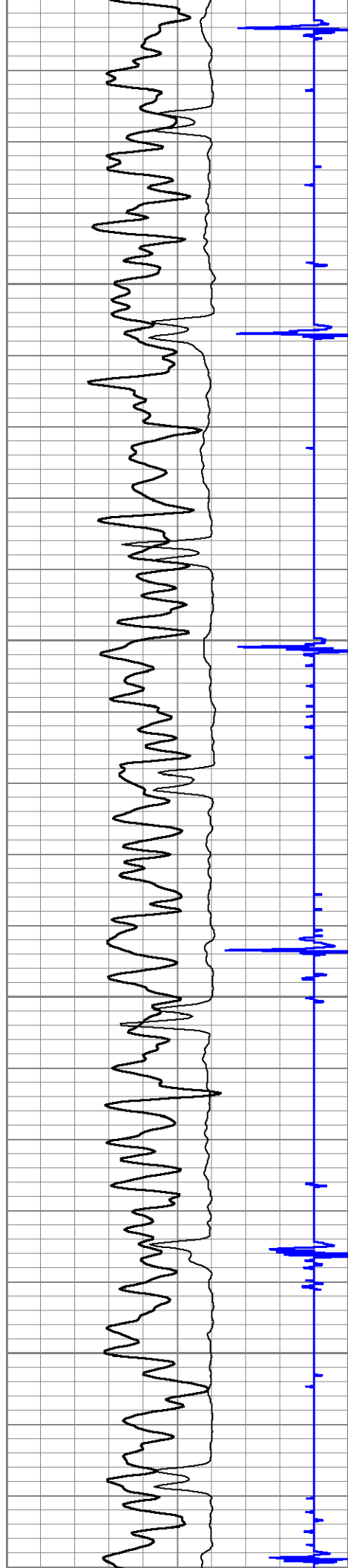
1800

1850

1900

1950



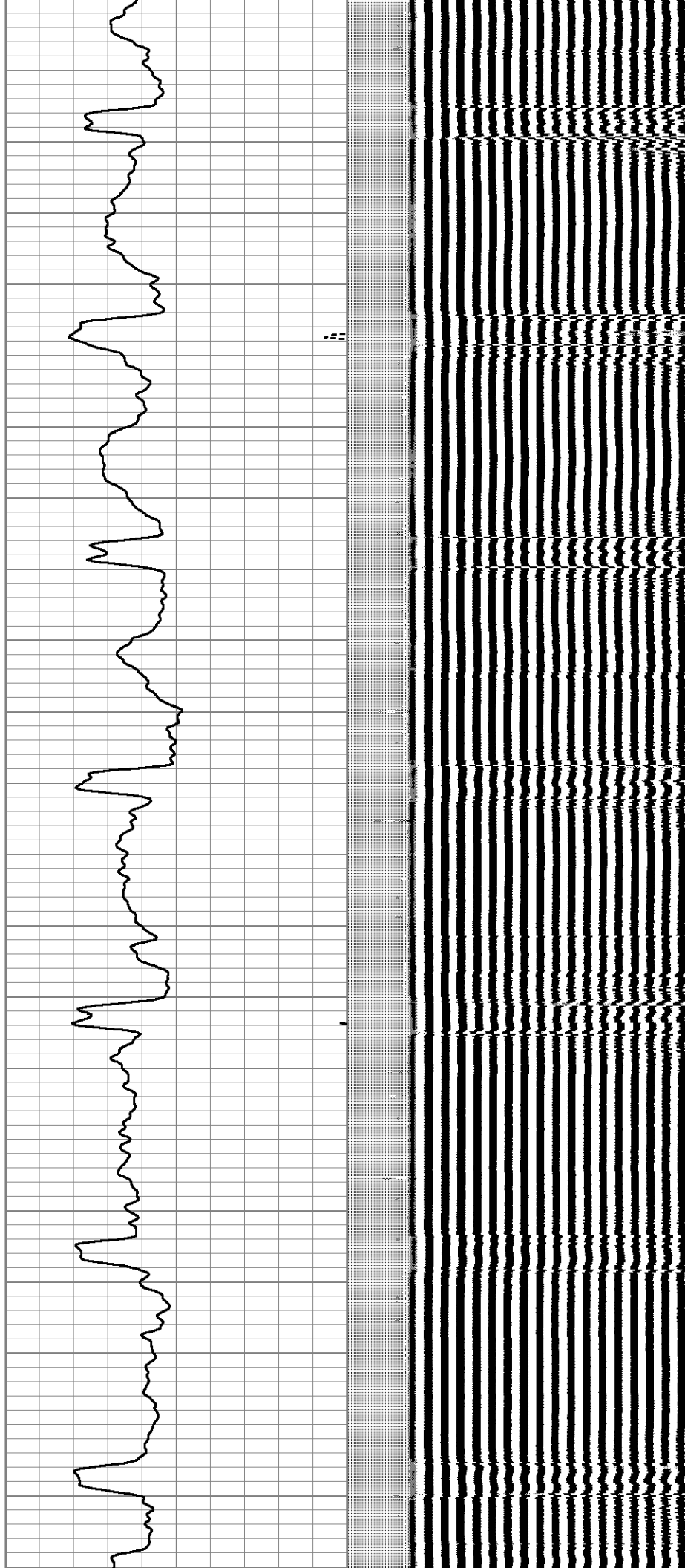


2000

2050

2100

2150





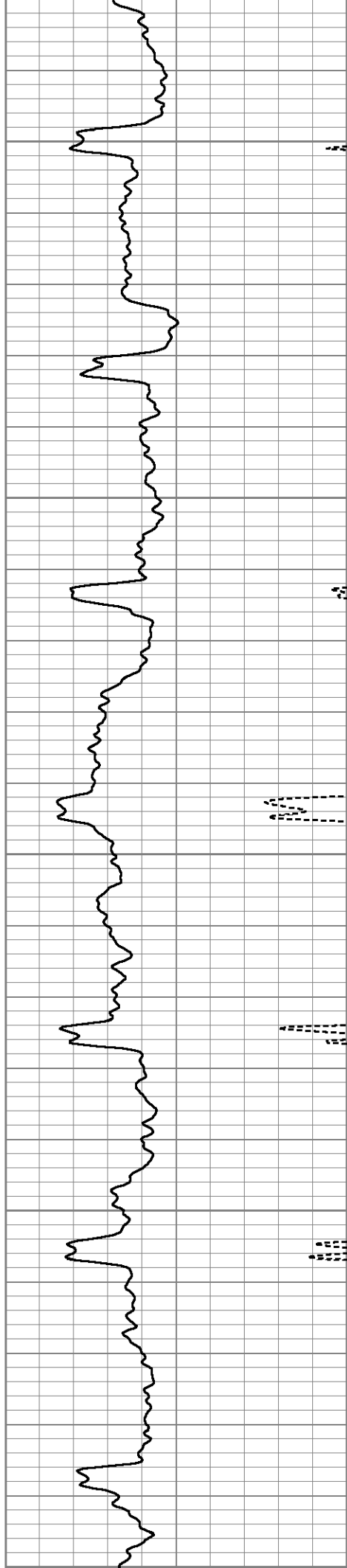
2200

2250

2300

2350

2400



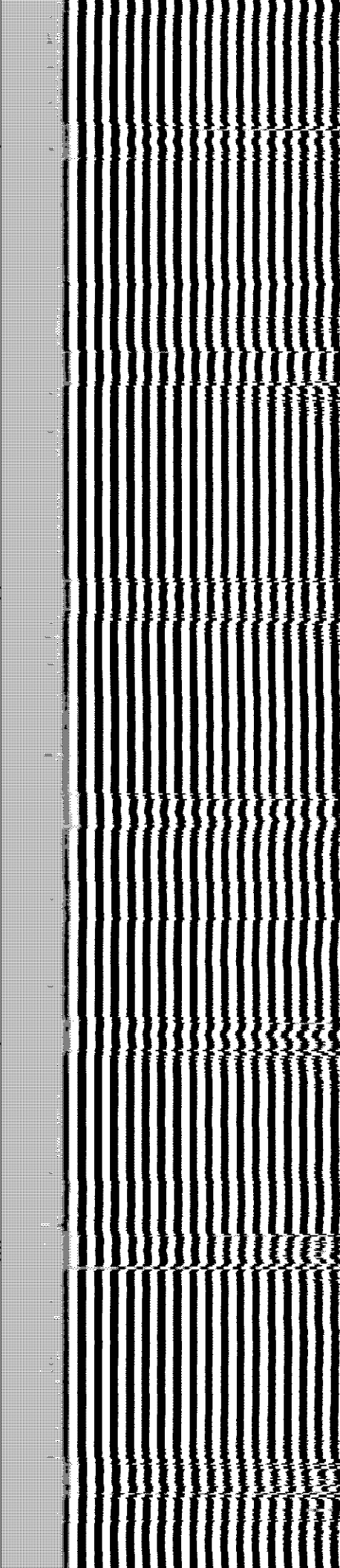
2200

2250

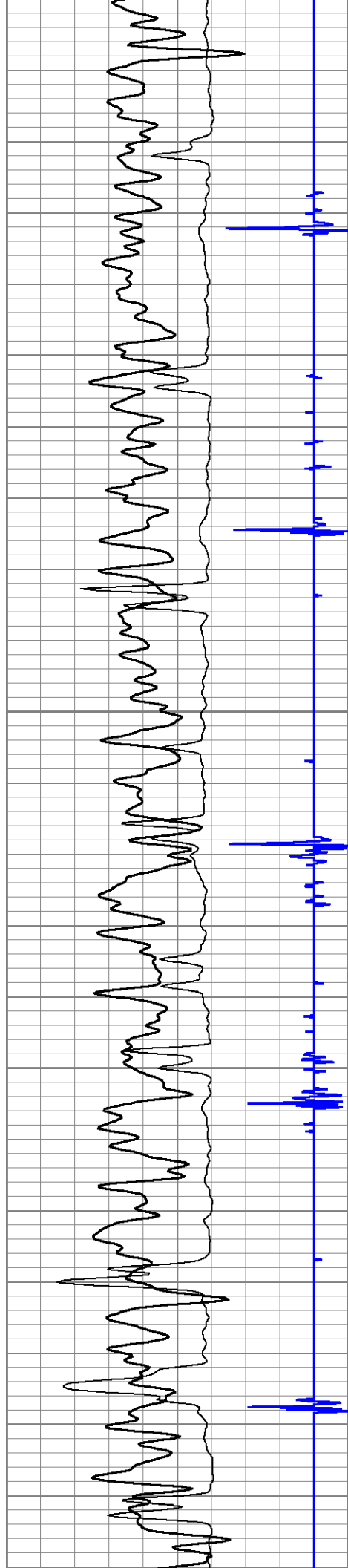
2300

2350

2400







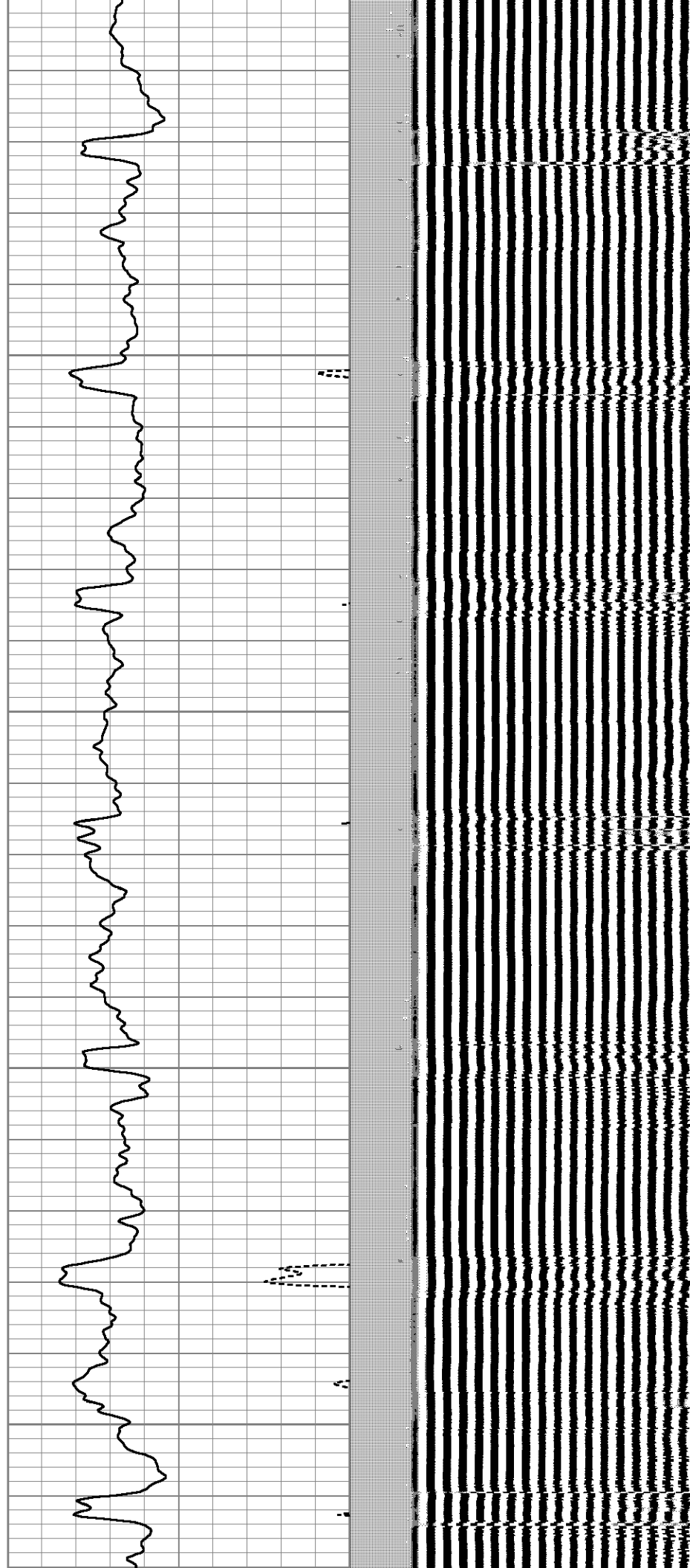
2400

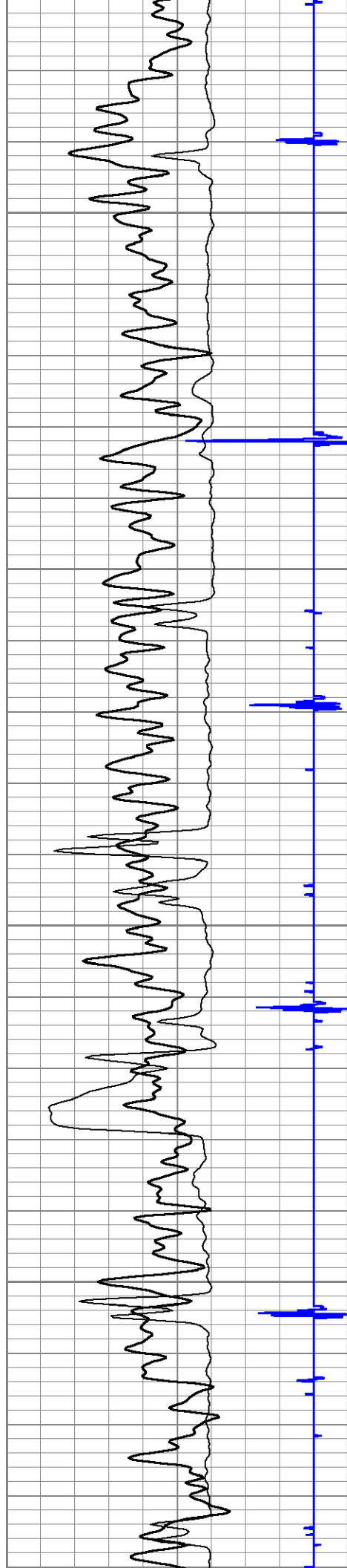
2450

2500

2550

2600



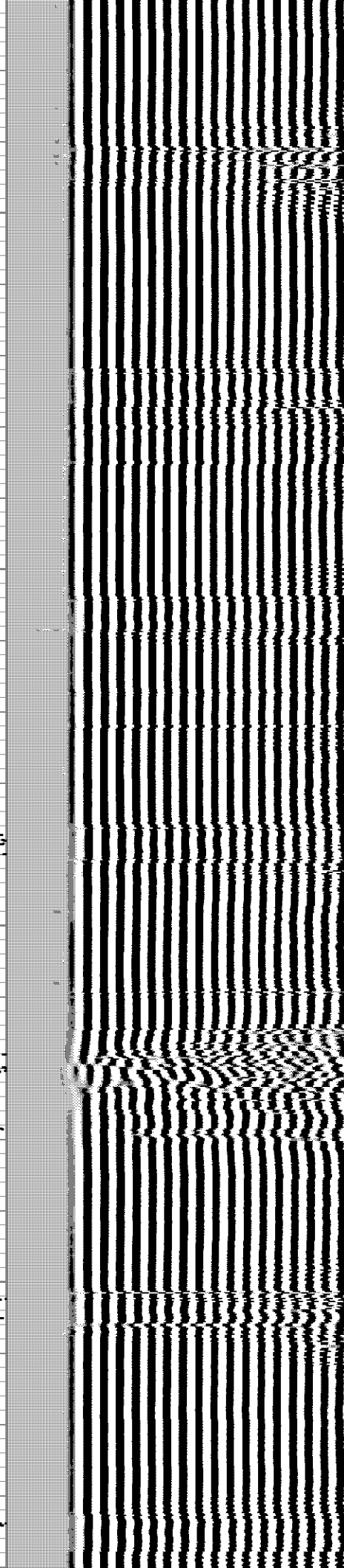
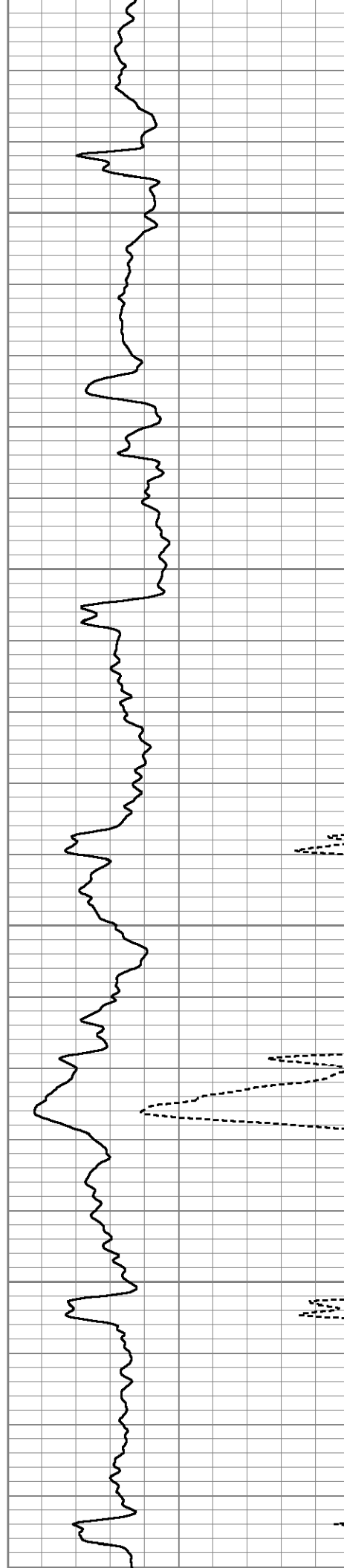


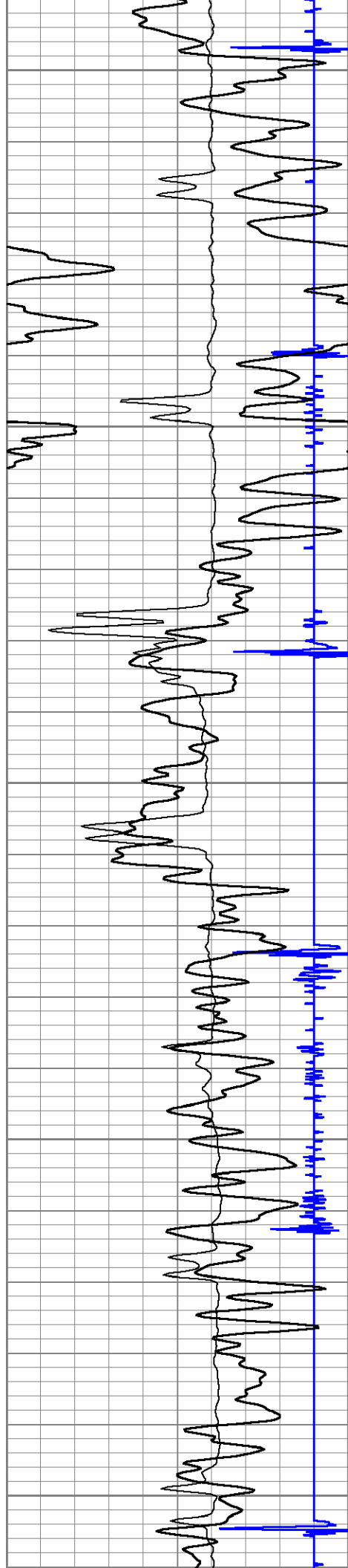
2650

2700

2750

2800





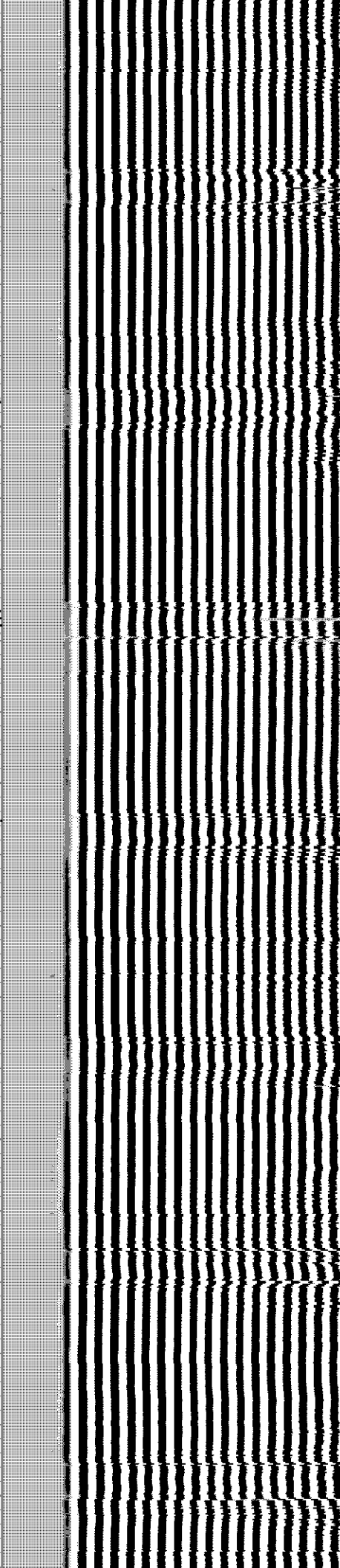
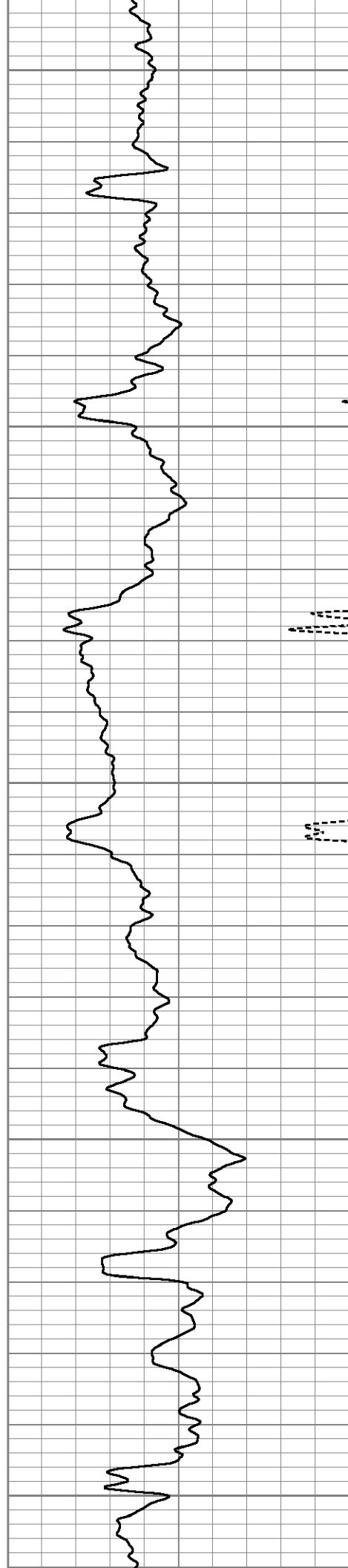
2850

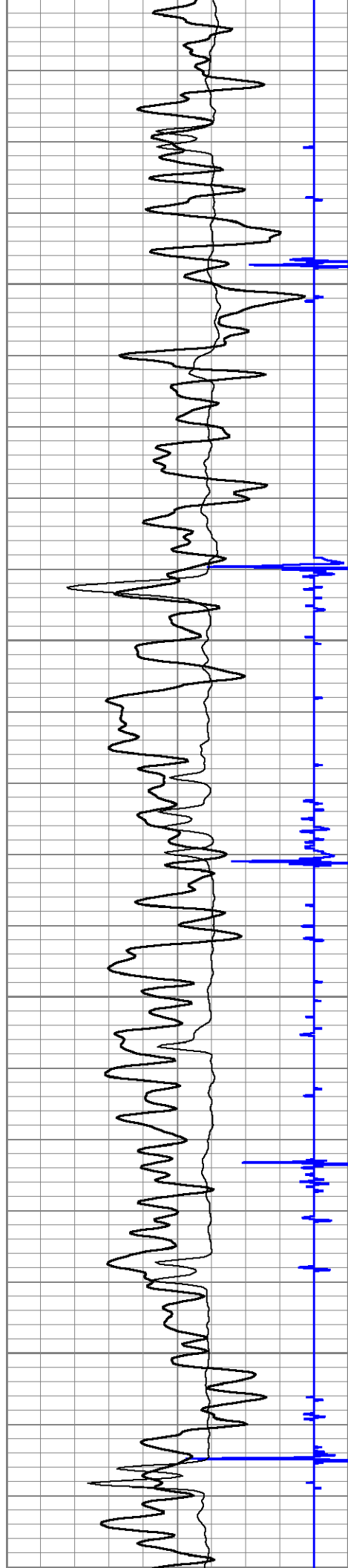
2900

2950

3000

3050



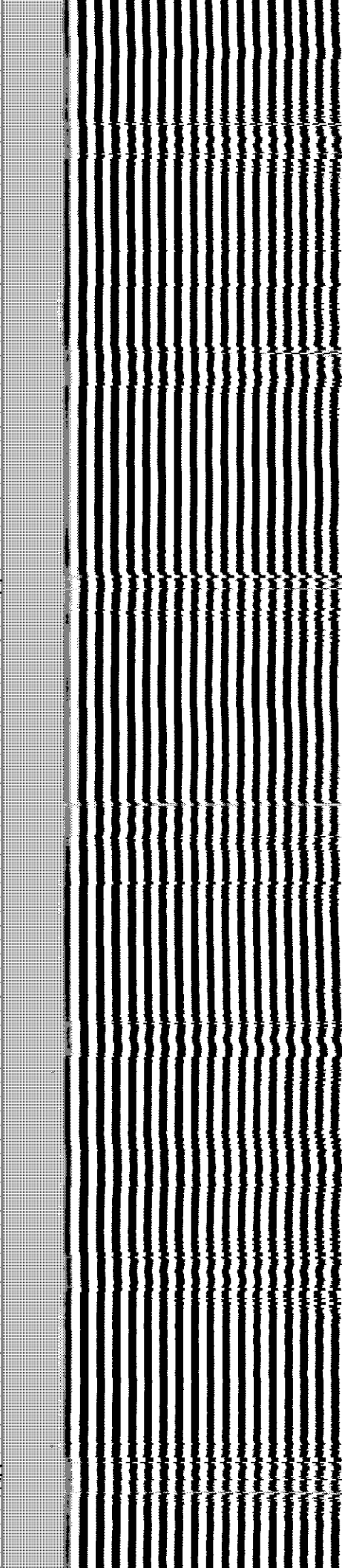
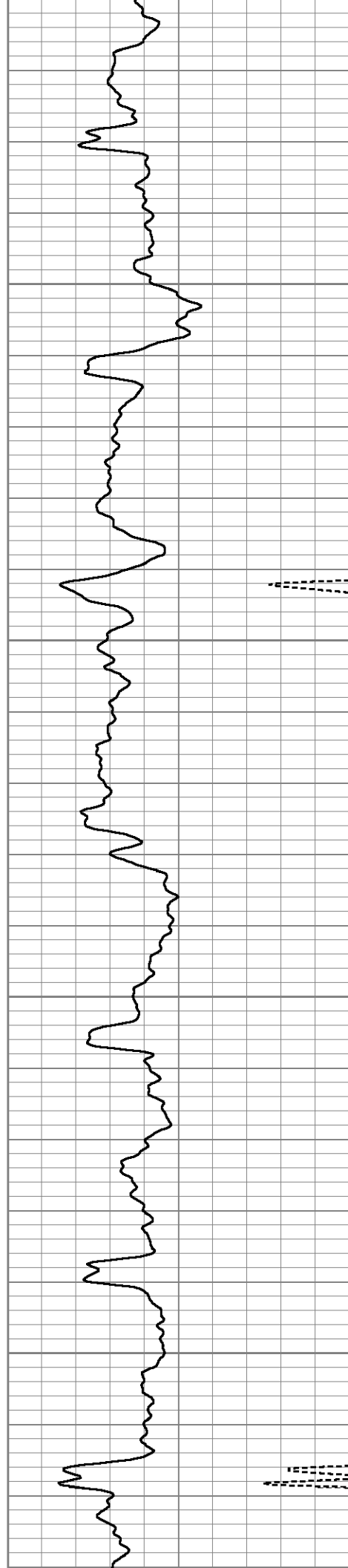


3100

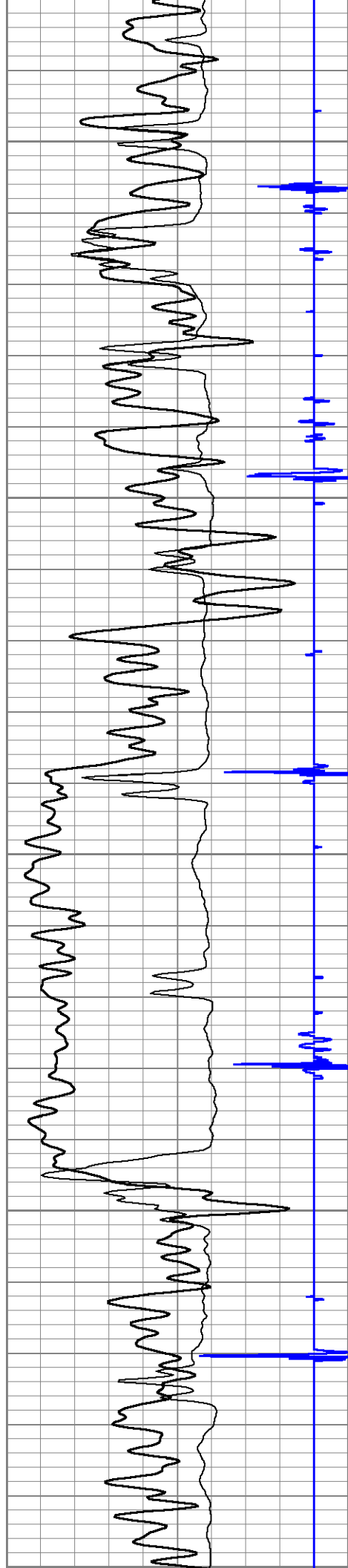
3150

3200

3250







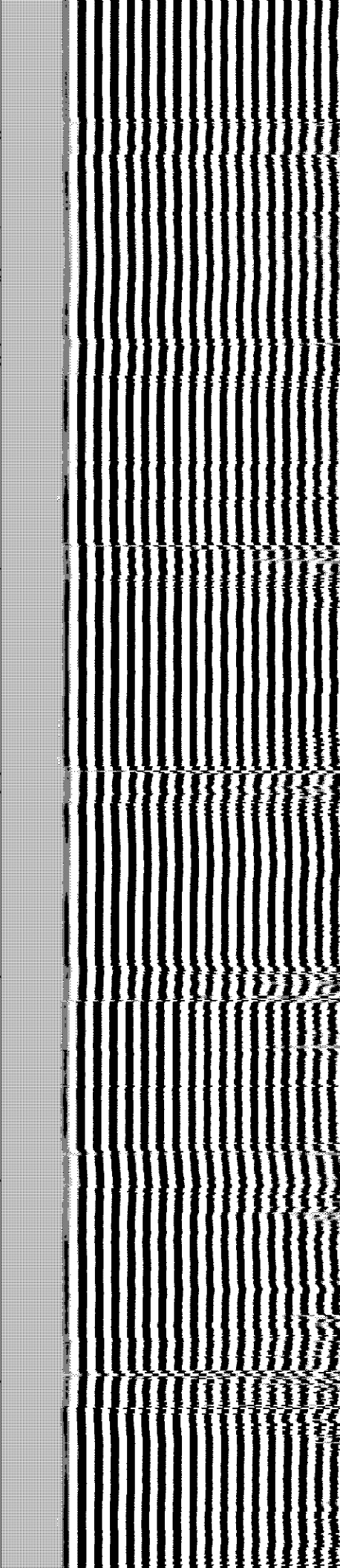
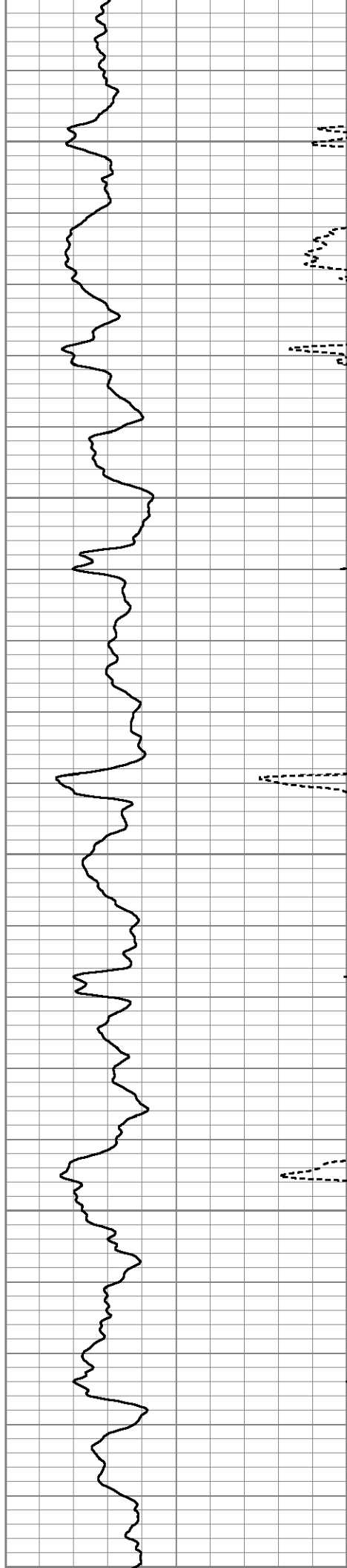
3300

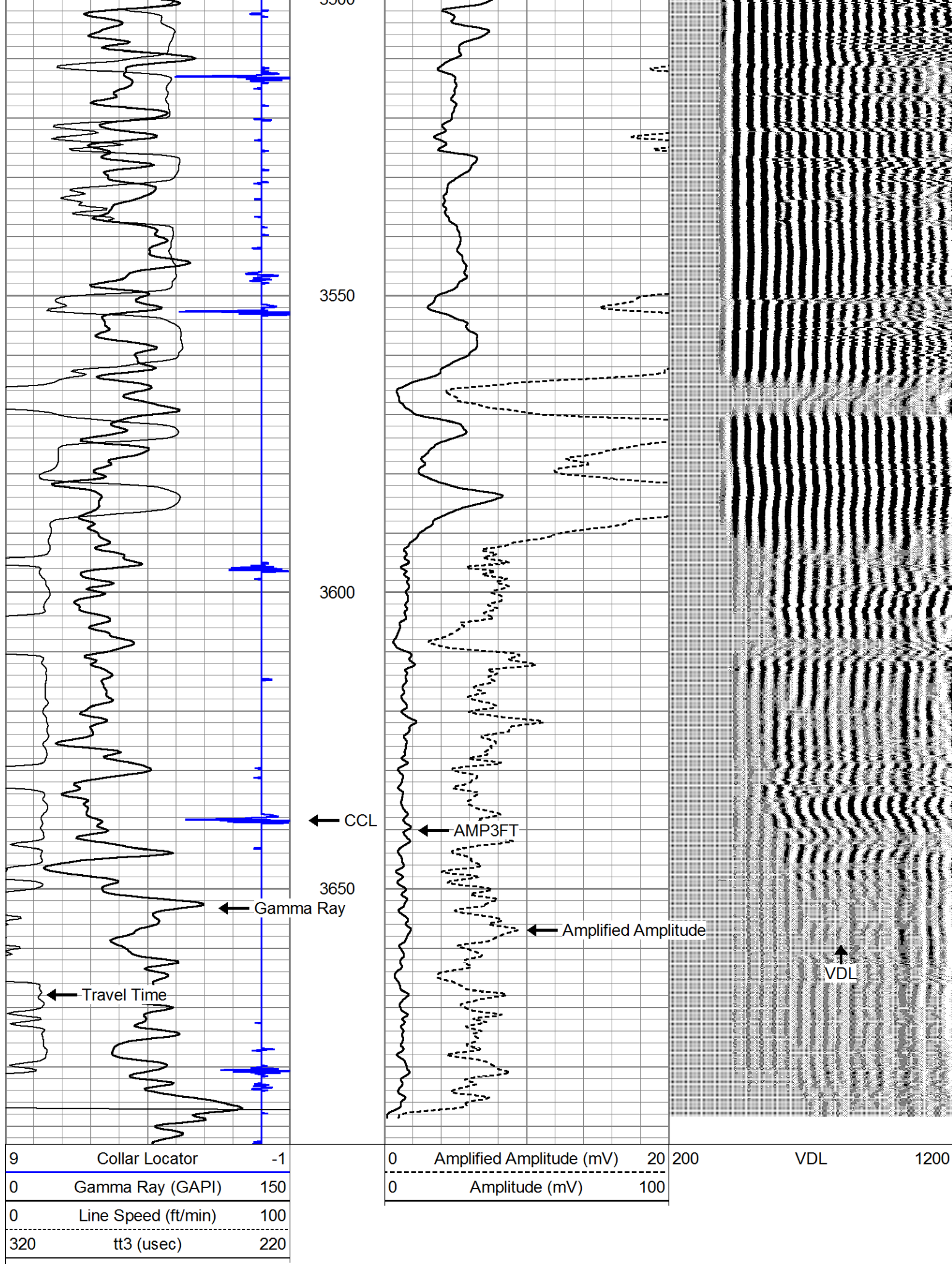
3350

3400

3450

3500





## Calibration Report

Database File state 3.db  
 Dataset Pathname pass5  
 Dataset Creation Mon Sep 28 10:06:13 2020

## Gamma Ray Calibration Report

Type / Serial: Probe275dig / 101010

## SHOP CALIBRATION

Wed Feb 27 07:52:48 2013

	Counts/Sec.	Gain	Offset	Jig	Units
Background	0.0				cps
Calibrator	1.0				cps
		0.6500			GAPI/cps

## PRIMARY VERIFICATION

Background	0.0				cps
Calibrator	0.0				cps
Difference				0.0	GAPI

## BEFORE SURVEY VERIFICATION

Background	0.0				cps
Calibrator	0.0				cps
Difference				0.0	GAPI

## AFTER SURVEY VERIFICATION

Background	0.0				cps
Calibrator	0.0				cps
Difference				0.0	GAPI

## Segmented Cement Bond Log Calibration Report

Serial Number: 101020  
 Tool Model: Probe

Calibration Casing Diameter: 4.500 in  
 Calibration Depth: 95.483 ft

Master Calibration, performed Mon Sep 28 09:50:27 2020:

	Raw (v)		Calibrated (mv)		Results	
	Zero	Cal	Zero	Cal	Gain	Offset
3'	0.000	1.486	1.000	81.196	53.983	1.000
CAL	0.000	1.575				
5'	0.000	1.249	1.000	81.196	64.217	1.000
SUM						
S1	0.000	1.520	0.000	81.196	53.433	0.000
S2	0.000	1.466	0.000	81.196	55.390	0.000
S3	0.000	1.449	0.000	81.196	56.032	0.000
S4	0.000	1.441	0.000	81.196	56.359	0.000
S5	0.000	1.455	0.000	81.196	55.793	0.000
S6	0.000	1.494	0.000	81.196	54.340	0.000
S7	0.000	1.509	0.000	81.196	53.822	0.000
S8	0.000	1.522	0.000	81.196	53.331	0.000

Internal Reference Calibration, performed Tue Feb 12 12:45:01 2013:

	Raw (v)		Calibrated (v)		Results	
	Zero	Cal	Zero	Cal	Gain	Offset

CAL	0.000	0.000	0.000	1.575	1.000	0.000
Air Zero Calibration, performed Thu Feb 21 13:40:31 2013:						
	Raw (v)	Calibrated (v)	Results			
	Zero	Zero	Offset			
3'	0.000	0.000	0.000			
5'	0.000	0.000	0.000			
SUM						
S1	0.000	0.000	0.000			
S2	0.000	0.000	0.000			
S3	0.000	0.000	0.000			
S4	0.000	0.000	0.000			
S5	0.000	0.000	0.000			
S6	0.000	0.000	0.000			
S7	0.000	0.000	0.000			
S8	0.000	0.000	0.000			