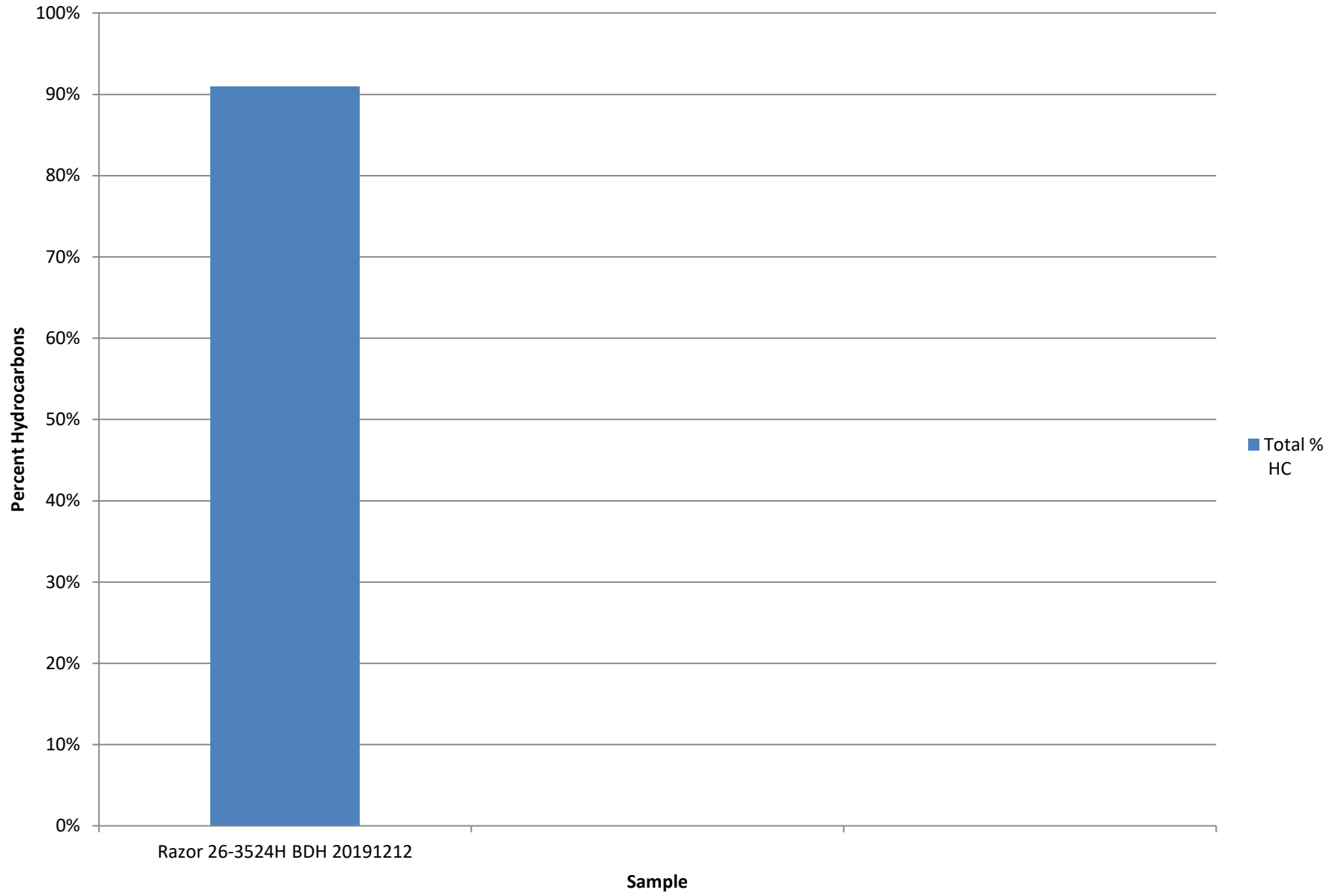
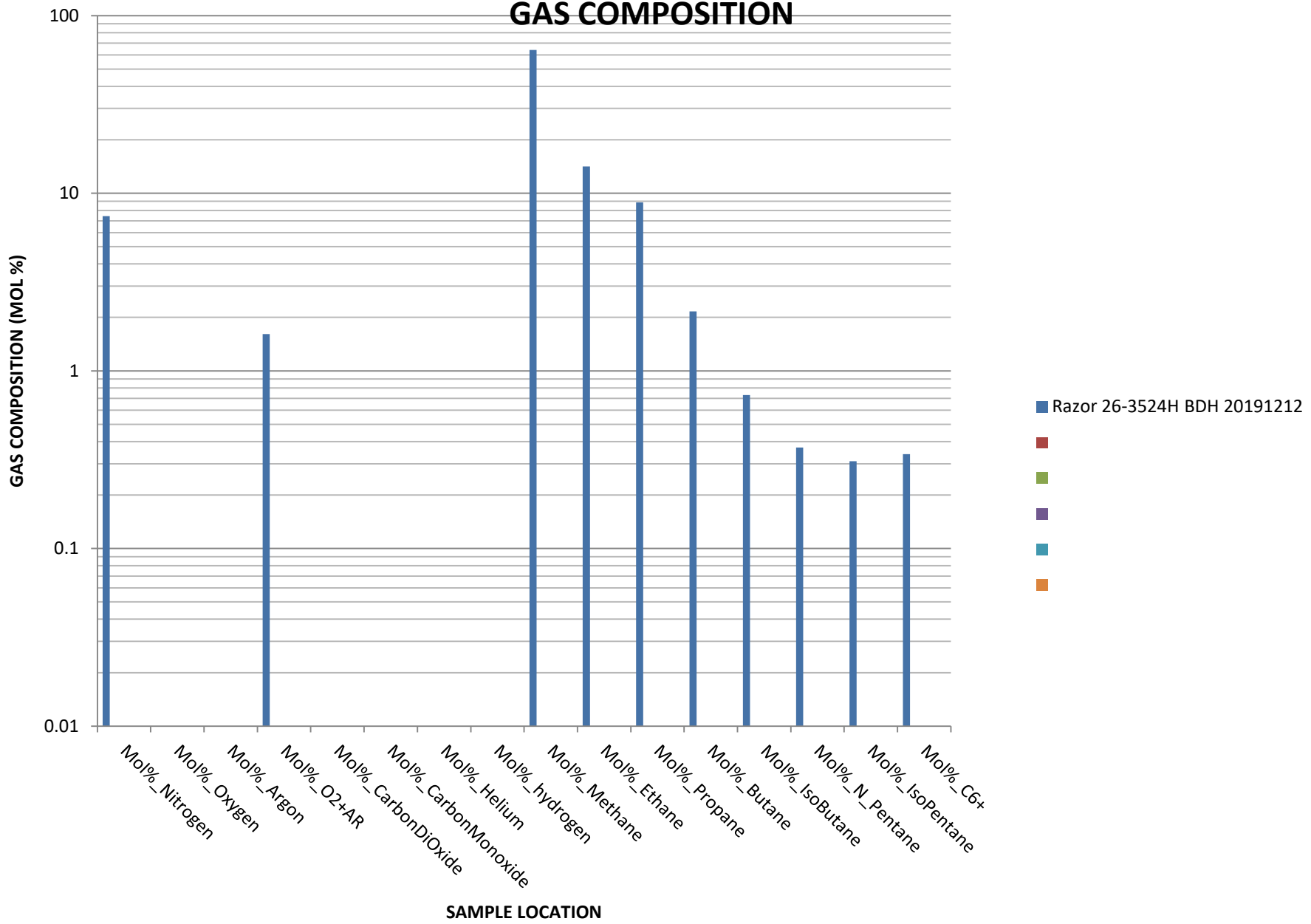


# Total Percent Hydrocarbons

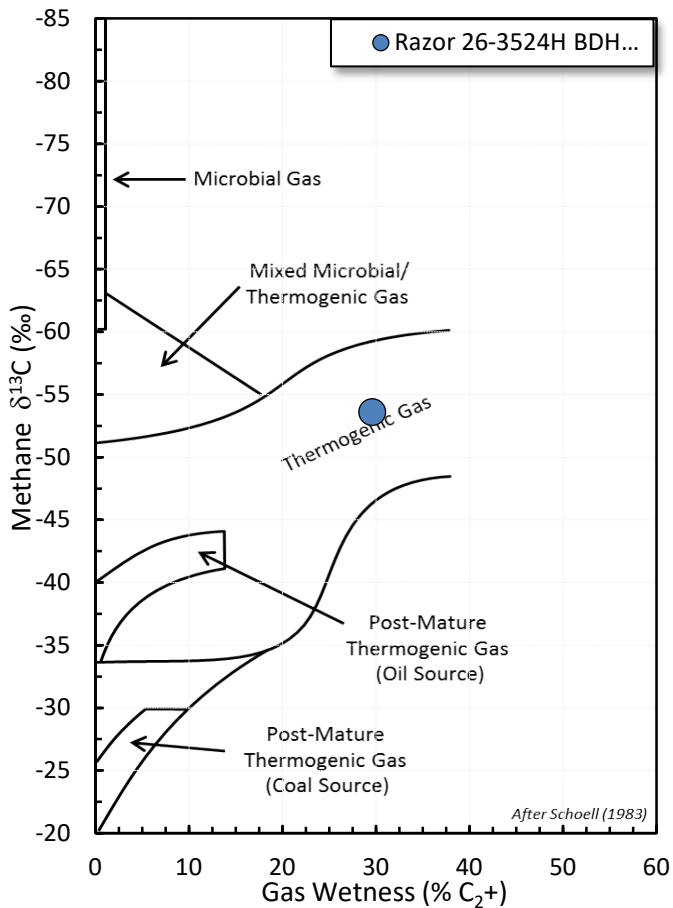


# GAS COMPOSITION

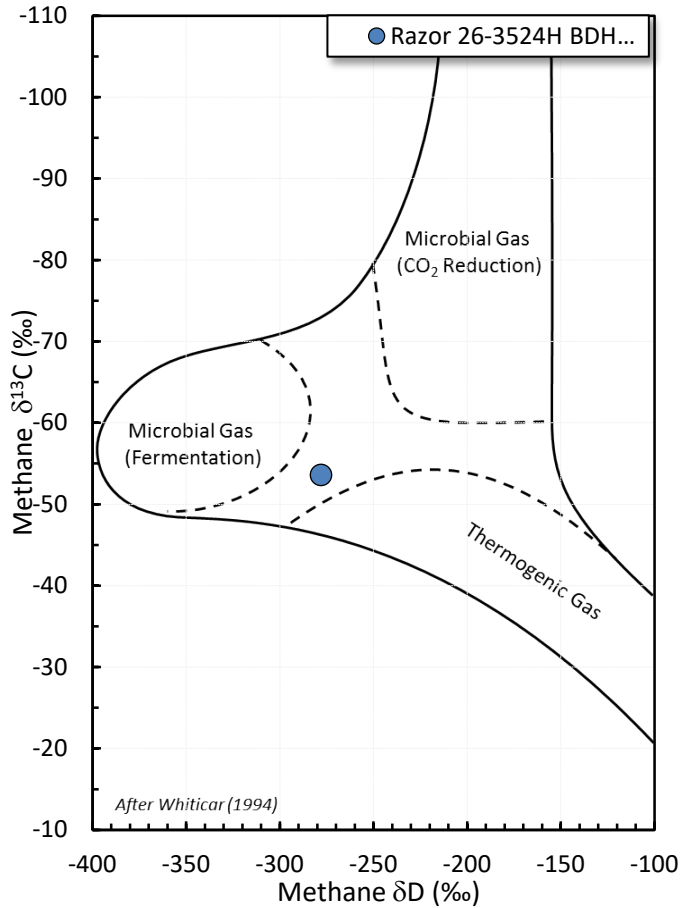


# Stable Isotope Interpretive Plots

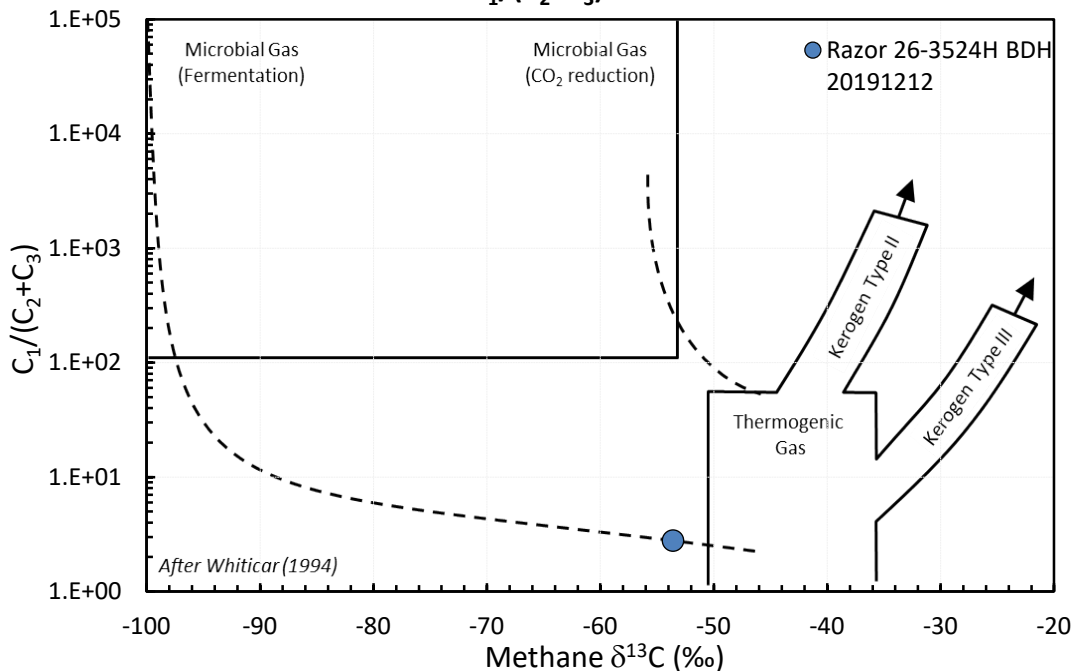
## Methane vs Gas Wetness Genetic Classification



## Methane $\delta^{13}\text{C}$ vs $\delta\text{D}$ Genetic Classification Plot



## Methane $\delta^{13}\text{C}$ vs $\text{C}_1/(\text{C}_2+\text{C}_3)$ Genetic Classification Plot



# HYDROCARBON COMPOSITION

