

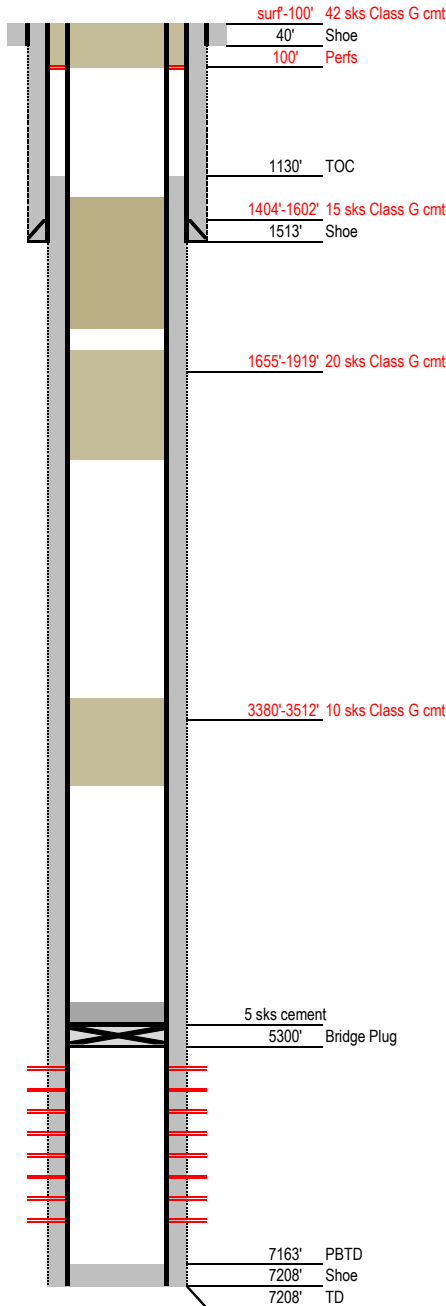
Laramie Energy

Final P&A Wellbore Diagram

Not to Scale

FEDERAL WELL: YES NO

Geological Tops	Depth (MD)
Wasatch	1787'
Williams Fork	5344'
Cameo	5992'
Rollins	6395'
Cozzette	6804'
Corcoran	6980'



Well Name Red Mountain Ranch 33-13
API 05-077-09236-00
Surface Location NESW S33, T9S, R94W
GPS Coordinates 39.232502 -107.887408
Bottom Hole Loc 824 FSL & 673 FWL SEC 33 T4S R94W
Field Plateau # 69300
County, State Mesa, CO # 077
Spud Date 6/19/2007
Completion Date 7/1/2007
Diagram Date 10/16/2020
KB Elevation 6781'
KB 15'
GL Elevation 6766'

Hole -
Conductor 16" .25" wall @ 40'
Cement Surface

Surface Hole 12.25" @ 1515'
Casing 8.625" 32# J55 STC @ 1513'
TOC Surface

Production Hole 7.875" @ 7208'
Casing 4.5" 11.6# 180 @ 7208'
Cement
TOC 1130' CBL dated 3/11/2008

Tubing

Perforations	Top	Bottom
	5350'	6363'